
CHAPTER IX— FRUITS AND NUTS,
AND HORTICULTURAL SPECIALTIES

CONTENTS

	Page		Page
Introduction.....	529	Apples.....	532
Plan of regionalization.....	529	Cherries.....	533
Farms reporting.....	530	Peaches.....	533
Acreage or number of trees or vines.....	530	Pears.....	533
Production and unit of measure.....	531	Plums and prunes.....	533
Value.....	531	Grapes.....	536
Comparability of statistics.....	531	Apricots.....	536
Individual crops.....	531	Nuts.....	536
Small fruits.....	531	Citrus fruits.....	537
Land in fruit orchards, vineyards, and planted nut trees.....	532	Horticultural specialties.....	538

CHARTS

	Page
Strawberries—Acreage and production, for the United States: 1899 to 1944.....	533
Land in fruit orchards—Acreage, for the United States: 1930 to 1945.....	533
Apples—Number of trees (all ages), 1910 to 1945; and production, 1889 to 1944; for the United States.....	533
Cherries—Number of trees (all ages), 1910 to 1945; and production, 1889 to 1944; for the United States.....	533
Peaches—Number of trees (all ages), 1910 to 1945; and production, 1889 to 1944; for the United States.....	536
Pears—Number of trees (all ages), 1910 to 1945; and production, 1889 to 1944; for the United States.....	536
Plums and prunes—Number of trees (all ages), 1910 to 1945; and production, 1889 to 1944; for the United States.....	536
Grapes—Number of vines (all ages), 1910 to 1945; and production, 1889 to 1944; for the United States.....	537
Grapefruit—Number of trees (all ages), 1890 to 1945; and production, 1944 and 1939; for the United States.....	537
Oranges (including satsumas, tangerines and mandarins)—Number of trees (all ages), 1890 to 1945; and production, 1944 and 1939; for the United States.....	537

MAPS

	Page		Page
Land in fruit orchards, vineyards, and planted nut trees, acreage, January 1, 1945.....	539	Apples—Trees of all ages, number, January 1, 1945.....	540
Strawberries harvested, acreage, 1944.....	539	Cherries—Trees of all ages, number, January 1, 1945.....	540
Value of fruits and nuts sold, dollars, 1944.....	539	Peaches—Trees of all ages, number, January 1, 1945.....	540
Value of horticultural specialties sold, dollars, 1944.....	539	Pears—Trees of all ages, number, January 1, 1945.....	540
Value of other crops (field crops) sold, dollars, 1944.....	539	Plums and prunes—Trees of all ages, number, January 1, 1945.....	540
Value of vegetables harvested for sale, dollars, 1944.....	539	Grapes—Vines of all ages, number, January 1, 1945.....	540
Value of specified crops harvested, dollars, 1944.....	539	Oranges—Trees of all ages, number, January 1, 1945.....	540
Value of all crops sold, dollars, 1944.....	539	Grapefruit—Trees of all ages, number, January 1, 1945.....	540

TABLES

	Page
Summary for specified crops—Acreage and value of production with comparative data for all crops and cropland harvested, for the United States: 1879 to 1944.....	530
Factors used in converting fruit production from the units of measure reported to the units shown in the tables.....	531
Specified small fruits—Farms reporting, acreage, production, and value, for the United States: 1899 to 1944.....	532
Specified tree fruits, nuts, and grapes—Farms reporting, number of trees or vines, production, and value, for the United States: 1890 to 1945.....	534
Specified small fruits—Farms reporting, acreage, quantity harvested, and value, 1944 and 1939; with historical data for strawberries; by divisions and States.....	542
Land in fruit orchards, vineyards, and planted nut trees—Farms reporting and acreage, by divisions and States: 1945, 1940, and 1935.....	546
Apples—Farms reporting and number of trees, 1945, 1940, and 1935; quantity harvested, 1944, 1939, and 1934; and value, 1944 and 1939; by divisions and States.....	547
Cherries—Farms reporting and number of trees, 1945, 1940, and 1935; quantity harvested, 1944, 1939, and 1934; and value, 1944 and 1939; by divisions and States.....	548
Peaches—Farms reporting and number of trees, 1945, 1940, and 1935; quantity harvested, 1944, 1939, and 1934; and value, 1944 and 1939; by divisions and States.....	549
Pears—Farms reporting and number of trees, 1945, 1940, and 1935; quantity harvested, 1944, 1939, and 1934; and value, 1944 and 1939; by divisions and States.....	550
Plums and prunes—Farms reporting and number of trees, 1945, 1940, and 1935; quantity harvested, 1944, 1939, and 1934; and value, 1944 and 1939; by divisions and States.....	551
Apricots—Farms reporting and number of trees, 1945 and 1940; and quantity harvested and value, 1944 and 1939; by divisions and States.....	552
Grapes—Farms reporting and number of vines, 1945, 1940, and 1935; quantity harvested, 1944, 1939, and 1934; and value, 1944 and 1939; by divisions and States.....	553
Pecans (improved and seedling)—Farms reporting and number of trees, 1945, 1940, and 1930; quantity harvested, 1944, 1939, and 1929; and value, 1944 and 1939; by divisions and States.....	554
Almonds, filberts, and walnuts (English or Persian)—Farms reporting and number of trees, 1945, 1940, and 1930; quantity harvested, 1944, 1939, and 1929; and value, 1944 and 1939; by States.....	555
Tung nuts—Farms reporting and number of trees, 1950 to 1945; quantity harvested, 1944, 1939, and 1929; and value, 1944 and 1939; by States.....	555
Oranges—Farms reporting and number of trees, 1945, 1940, and 1935; quantity harvested, 1944, 1939, and 1934; and value, 1944 and 1939; by States.....	556
Oranges (including satsumas, tangerines, and mandarins)—Farms reporting, 1920 to 1950; number of trees, 1890 to 1950; and quantity harvested, 1899 to 1929; by States.....	556
Tangerines and mandarins—Farms reporting and number of trees, 1945 and 1940; and quantity harvested and value, 1944 and 1939; by States.....	556
Grapefruit—Farms reporting and number of trees, 1945, 1940, and 1935; quantity harvested, 1944, 1939, and 1934; and value, 1944 and 1939; by States.....	557
Lemons—Farms reporting and number of trees, 1945 and 1940; and quantity harvested and value, 1944 and 1939; by States.....	557
Limes—Farms reporting and number of trees, 1945 and 1940; and quantity harvested and value, 1944 and 1939; by States.....	557
Horticultural specialties—Farms reporting and value of sales, by divisions and States: 1944, 1939, and 1929.....	558

CHAPTER IX—FRUITS AND NUTS, AND HORTICULTURAL SPECIALTIES

Introduction.—This chapter presents statistics collected in the 1945 Census of Agriculture for specified small fruits, specified tree fruits, nuts, and grapes and horticultural specialties. Small fruits is a term used to include tame or cultivated berry crops and also wild blueberries if the land from which the blueberries were harvested was used primarily for their production. Horticultural specialties include (1) crops grown under glass (flowers, plants, and vegetables) and propagated mushrooms; (2) nursery products (trees, shrubs, vines, ornamentals, etc.); and (3) flower and vegetable seeds, bulbs, and flowers and plants grown in the open.

For small fruits, the data presented in this chapter show, for each specified crop, the number of farms on which it was harvested in 1944, the area harvested, the production, and the value of production. For fruit orchards or groves, planted nut trees, and vineyards, an area was not secured for each kind of fruit or nut but rather for the over-all area for each farm for all such items combined. The area shown under "Land in fruit orchards, vineyards, and planted nut trees" and the number of farms reporting such area relate to the census date, January 1, 1945. The area figures include all land in orchards, groves, or vineyards—regardless of whether the trees or vines were of bearing age—except when an acreage was not reported for scattered trees or vines about the farmyards, along farm lanes or fence rows, etc. The number of trees, or vines, of all ages was secured for several of the individual kinds of fruits and nuts and such figures also relate to the census date. Except for citrus fruits, the production of tree fruits, nuts, and grapes relates to the 1944 crop year; for citrus fruits, the production figures relate to the crop harvested in the 1943-1944 season from the bloom of 1943. The number of farms reporting apples, grapes, pecans, or other individual crops refers to the number reporting production, as cited above, and/or living trees (or vines) on the census date. The data obtained for horticultural specialties were restricted to a composite value of the products sold or traded in 1944; these values are given herein along with the number of farms or establishments reporting such sales.

In addition to the grand totals for the continental United States, totals are usually shown not only for the 9 geographic divisions and for each of the 48 States and the District of Columbia, as has been the custom in general summary reports for a census of agriculture, but also for 3 larger geographic regions, viz, The North, The South, and The West. Similar data, for counties, appear in volume I, parts 1 to 33. Much of the information is also available in statistical tables for minor civil divisions (townships, precincts, etc.) and, although not published, this information may be obtained from the Bureau of the Census by payment of the cost of making reproductions of such tables. Chapter VIII, immediately preceding this chapter, presents data, similar to those included herein, for specified field and vegetable crops, such as corn, wheat, oats, and other small grains, hays, seeds, cotton, tobacco, Irish and sweet potatoes, farm gardens, vegetables harvested for sale, etc. A limited over-all picture of crop production for the United States is presented in the first summary table in each of these two chapters.

Comparable data for each of the items for which separate information was gathered in the 1945 Census are available for one or more prior censuses. Tables 3 and 4 present all such figures for the United States, as a whole, while the tables following present only a part of the available comparative information for component geographic areas such as regions, divisions, and States.

Plan of regionalization.—In 1945, a regionalized book type of schedule was used to secure crop information. The plan of regionalization for both 1945 and 1940 and the results

attained, particularly for the later census, are presented in some detail in chapter VIII. Only a brief reference to the plan, as used in 1945, is given in this chapter. A different schedule was provided for each of the 7 geographic regions (not conforming to any of the geographic areas referred to above), each region being fairly homogeneous as to the kinds of crops grown. By using a different schedule for each region, it was possible to restrict the number of crop inquiries to selected crops which were most important in an area as well as to provide for the use of the units of measure which were most prevalent in the area. Under the fruits and nuts section of the schedule, space was provided for the enumerator to record, for each farm, the combined value of the 1944 production of all small fruits and tree fruits and nuts for which separate inquiries were not provided. A method was outlined for identifying, on a schedule book basis, the names of the crops for which a value was listed under this "catch-all" question. Under this procedure, then, information for such "unlisted" crops was not required in the same detail as was sought in the case of crops with separate inquiries. In addition, many enumerators failed to identify the crop grown, while other enumerators entered a value for items that were not properly classified as cultivated small fruits, tree fruits, or nuts. No data are shown in this chapter, therefore, for the values reported under this "catch-all" inquiry. However, the inquiry relating to "Land in fruit orchards, vineyards, and planted nut trees" was designed to include the area of all cultivated tree fruits and nuts; and the inquiry for the "Value of fruits and nuts sold" (see chapter X of this volume) should include the value of sales of all cultivated small fruits, tree fruits, and nuts.

For the foregoing reasons, data are not available for the acreage, production, and value of production for such small fruits as cranberries, currants, gooseberries, etc.; and, likewise, data are not available for the number of trees, production, or value of production of such tree fruits as avocados, figs, mangoes, quinces, etc. Further, it has been necessary to restrict the over-all totals to figures which are short of the actual totals for the United States for those crops for which a separate inquiry was carried for one or more regions, but not universally for all 7 regions; for example, raspberries, boysenberries, loganberries, and youngberries; apricots; filberts; English walnuts; etc. In the tables, therefore, the words "Specified crops" or "Specified States" are used to identify totals which lack completeness insofar as the total for the United States is concerned.

In summary tables 3 and 4, with appropriate reference notes as to their comparability with the data for previous censuses, are presented all totals for the 1945 Census which lack completeness because a separate inquiry was not carried in all regions for a particular crop. These incomplete totals for the 1945 Census are shown in the division and State tables as totals for "Specified States." Comparable statistics for the same Specified States are presented from the 1940 Census; in addition, United States totals are given from the 1940 Census. A comparison of the Specified States data for 1940 with the United States total for the same census year will indicate, in a broad way, the extent of the completeness of the 1945 Census figures. The degree of incompleteness varies with the crop. It should be remembered that the value of sales of fruits and nuts, as given in chapter X, represents the income from sales of all fruits and nuts, even though some of these crops did not have a separate inquiry for acreage or number of trees, production, and value of production on any of the regionalized schedules (see chapter X for a discussion of the reliability of the reports on the value of all fruits sold).

In addition to the foregoing precautions and limitations when comparing the data for the 1945 Census with those for

CENSUS OF AGRICULTURE: 1945

Table 1.—SUMMARY FOR SPECIFIED CROPS—ACREAGE AND VALUE OF PRODUCTION WITH COMPARATIVE DATA FOR ALL CROPS AND CROPLAND HARVESTED, FOR THE UNITED STATES: 1879 TO 1944

[For comparability of data, see text discussion]

ITEM AND YEAR	ACREAGE			VALUE (DOLLARS)			Average per acre
	Total	Increase or decrease (-)		Total	Increase or decrease (-)		
		Acres	Percent		Amount	Percent	
Cropland harvested.....1944..	352,865,765	31,623,385	9.8	XXXXXXXXXXXXXXXX	XXXXXXXXXXXXXXXX	XXXXXXXXXX	XXXXXXXXXX
1939..	321,242,430	25,618,254	8.7	XXXXXXXXXXXXXXXX	XXXXXXXXXXXXXXXX	XXXXXXXXXX	XXXXXXXXXX
1934..	295,624,176	-63,617,915	-17.7	XXXXXXXXXXXXXXXX	XXXXXXXXXXXXXXXX	XXXXXXXXXX	XXXXXXXXXX
1929..	359,242,091	14,692,824	4.3	XXXXXXXXXXXXXXXX	XXXXXXXXXXXXXXXX	XXXXXXXXXX	XXXXXXXXXX
1924..	344,549,267	-4,054,462	-1.2	XXXXXXXXXXXXXXXX	XXXXXXXXXXXXXXXX	XXXXXXXXXX	XXXXXXXXXX
1919..	348,603,729			XXXXXXXXXXXXXXXX	XXXXXXXXXXXXXXXX	XXXXXXXXXX	XXXXXXXXXX
Specified crops, total.....1944..	349,803,130	33,856,795	10.5	14,439,980,636	8,795,476,808	155.8	41.28
1939..	316,546,385	19,438,844	6.5	5,644,458,828	(*)	(*)	17.88
1934..	297,107,491	-59,097,543	-16.6	(**)	(*)	(*)	(*)
1929..	356,205,084	(*)	(*)	(**)	(*)	(*)	(*)
Field crops ³1944..	340,246,318	32,098,672	10.4	11,891,732,143	7,175,918,654	152.2	34.95
1939..	308,147,646	21,261,512	7.4	4,715,813,489	(*)	(*)	15.80
1934..	286,886,134	-60,053,350	-17.3	(**)	(*)	(*)	(*)
1929..	346,939,484	12,623,813	3.8	(**)	(*)	(*)	(*)
1924..	334,315,671	-10,651,482	-3.1	(**)	(*)	(*)	(*)
1919..	344,967,158			(**)	(*)	(*)	(*)
Vegetables ³1944..	4,370,281	1,317,060	43.1	1,032,626,099	621,709,867	151.3	XXXXXXXXXX
1939..	3,058,221	-720,461	-19.1	410,916,232	(*)	(*)	XXXXXXXXXX
1934..	3,773,632	961,967	34.2	(**)	(*)	(*)	(*)
1929..	2,811,715	1,387,442	97.4	(**)	(*)	(*)	(*)
1924..	1,424,273			(**)	(*)	(*)	(*)
1919..				(**)	(*)	(*)	(*)
Fruits and nuts and horticultural specialties ⁴1944..	5,186,531	-158,937	-3.0	1,515,572,394	997,848,287	192.7	292.21
1939..	5,345,468	-1,102,207	-17.1	517,724,107	(*)	(*)	96.85
1934..	6,447,675	-6,160	-0.1	(**)	(*)	(*)	(*)
1929..	5,453,835	(*)	(*)	(**)	(*)	(*)	(*)
All crops ²1939..	⁵ 319,124,373	20,482,025	6.9	5,705,464,370	1,226,449,233	27.4	17.68
1934..	298,542,348	-59,425,320	-16.6	4,479,015,137	-3,774,499,749	-45.5	15.00
1929..	⁶ 358,067,668	(*)	(*)	8,223,514,886	750,380,028	10.0	22.37
1924..	(*)	(*)	(*)	7,472,534,858	-7,173,642,911	-49.0	(*)
1919..	348,603,729	37,310,347	12.0	14,646,177,759	9,358,403,935	177.0	42.01
1909..	311,293,382	23,075,102	9.9	5,237,773,834	2,399,724,154	83.1	16.99
1899..	283,218,280	63,512,716	28.9	2,888,049,680	(*)	(*)	10.20
1889..	219,705,564	53,518,980	32.2	(*)	(*)	(*)	(*)
1879..	166,186,584			(*)	(*)	(*)	(*)
Field crops ³1939..	310,546,458	22,125,467	7.7	4,763,656,130	813,330,995	20.6	15.34
1934..	⁸ 288,420,991	-60,362,122	-17.3	3,949,725,136	-2,956,371,010	-42.8	13.69
1929..	348,783,113	1,907,921	0.6	6,930,006,145	-6,372,501,706	-48.0	19.78
1924..	346,875,192	36,962,597	11.9	13,272,597,851	8,329,931,889	168.5	38.25
1919..	309,912,595	27,072,884	9.6	4,342,565,962	2,217,373,759	81.4	15.95
1899..	232,839,711			2,725,292,203			9.64
Vegetables ³1939..	3,058,221	-720,461	-19.1	410,916,232	(**)	(**)	XXXXXXXXXX
1934..	3,773,632	961,967	34.2	7,137,029,114	(**)	(**)	XXXXXXXXXX
1929..	2,811,715	1,387,442	97.4	323,009,786	-12,426,491	-2.3	XXXXXXXXXX
1924..	1,424,273	414,812	41.1	534,436,277	(**)	(**)	XXXXXXXXXX
1919..	1,009,461			⁹ 65,749,492	(**)	(**)	XXXXXXXXXX
Fruits and nuts and horticultural specialties.....1939..	5,524,694	-922,981	-14.3	530,892,008	138,631,120	35.3	96.09
1934..	⁶ 6,447,675	-25,165	-0.4	392,260,888	-409,148,067	-51.1	60.84
1929..	⁶ 6,472,840	(**)	(**)	801,408,955	-37,734,686	-4.5	123.81
1924..	¹⁰ 304,264	-67,062	-18.1	839,143,641	559,785,261	200.4	XXXXXXXXXX
1919..	¹⁰ 371,326	-7,243	-1.9	279,358,380	116,600,903	71.6	XXXXXXXXXX
1899..	¹⁰ 378,569			162,757,477			XXXXXXXXXX

*Not available.

**Available data not comparable.

¹14,502,932 acres of corn cut for fodder were excluded as most of this acreage was probably duplicated in the acreage of corn harvested for grain. The value of this fodder, \$206,934,650, was also excluded. 3,107,318 acres of mature crops hogged off (corn, velvetbeans, soybeans, peanuts, sweetpotatoes, etc.) were also excluded to conform with totals previously published.

²Total acreage of crops for which figures are available.

³Irish and sweet potatoes included with "Field crops," not with "Vegetables." Acreage of vegetables represents acres of vegetables harvested for sale only; acreage in farm gardens not available. Value includes both vegetables for home use and for sale.

⁴Acreage of horticultural specialties not available for 1944 and therefore excluded for previous censuses; value includes horticultural specialties.

⁵Figures differ from those previously published due to exclusion of acreage for alfalfa, clover, and grass seeds harvested, most of which is assumed to have been duplicated in the hay acreage.

⁶Only strawberries reported in small fruits; other small fruits included in field crops.

⁷Farm garden vegetables for home use only.

⁸Vegetables for sale.

⁹Acreage for horticultural specialties not included.

¹⁰Acreage in fruit orchards, vineyards, and planted nut trees not secured prior to 1930 Census.

previous censuses, it should be borne in mind that the acreage of crops (or the number of fruit trees or vines) and the number of farms reporting are, on the whole, better indices of general changes or trends in agriculture than the quantity of crop production, since variations in the quantity harvested may be due largely to favorable or unfavorable seasons, development of new varieties, availability of farm labor, etc.

Farms reporting.—The term "farms reporting" any of the small fruits indicates the number of farms on which a specified crop was reported as having been harvested in a designated year. For example, Tennessee led all States in the acreage of strawberries harvested in 1944. The Census of 1945 recorded 234,431 farms in that State and of these only 4,892 reported a production

of strawberries. Therefore, the number of farms reporting strawberries harvested in 1944, as shown in the tables, is given as 4,892 for Tennessee. The term "farms reporting," when used in the tables for tree fruits and nuts and grapes, refers to the number of farms that reported information either for production in the year for which such data were required or for the number of trees on the census date.

Acreage or number of trees or vines.—The 1945 schedule provided for reporting fractional acreages (tenths) for small fruits and for land in fruit orchards, vineyards, and planted nut trees. The enumerator was cautioned to omit nonbearing acreage for any of the listed small fruits but to include all land in bearing and nonbearing fruit orchards, vineyards, and

Table 2.—FACTORS USED IN CONVERTING FRUIT PRODUCTION FROM THE UNITS OF MEASURE REPORTED TO THE UNITS SHOWN IN THE TABLES

CROP	Units shown in the tables in this volume	REGIONS WHERE OTHER UNITS WERE CARRIED ON THE SCHEDULE AND IN THE STATE BULLETINS		Conversion factors
		Region	Unit	
Strawberries.....	Quarts	Region 7	Pounds	1 1/2 lb. = 1 qt.
Blackberries and dewberries.....	Quarts	Region 7	Pounds	1 1/2 lb. = 1 qt.
Raspberries.....	Quarts	Region 7	Pounds	1 1/2 lb. = 1 qt.
Boysenberries, loganberries, and youngberries.....	Quarts	Region 7	Pounds	1 1/2 lb. = 1 qt.
Apples.....	Bushels	Region 6	Ton of 2,000 lb.	1 bu. = 48 lb.
Cherries.....	Bushels	Region 6	Ton of 2,000 lb.	1 bu. = 48 lb.
Peaches.....	Bushels	Region 6	Ton of 2,000 lb.	1 bu. = 48 lb.
Pears.....	Bushels	Region 6	Ton of 2,000 lb.	1 bu. = 48 lb.
Plums and prunes.....	Bushels	Regions 6 and 7	Ton of 2,000 lb.	1 bu. = 56 lb.
Apricots.....	Bushels	Region 6	Ton of 2,000 lb.	1 bu. = 48 lb.
Grapes.....	Pounds	Region 5	Ton of 2,000 lb.	1 bu. = 48 lb.
Oranges.....	Tons	Region 2	Bushels	1 bu. = 56 lb.
Tangerines and mandarin	Tons	Region 3	Field boxes	1 f. b. = 90 lb.
Grapefruit.....	Tons	Region 3	Field boxes	1 f. b. = 82 lb.
Almonds.....	Pounds	Region 6	Ton of 2,000 lb.	
Walnuts.....	Pounds	Region 6	Ton of 2,000 lb.	

planted nut trees. The acreage of nurseries was not to be included in the total for land in fruit orchards, vineyards, and planted nut trees. The schedule inquiries for the individual tree fruits or nuts and for grapes provided for a report on the total number of trees or vines of all ages on the census date, no distinction being made as to the number which were of bearing age.

The dot maps presented in this chapter indicate the principal areas of production and the relative importance of each area. These maps are based upon the county as a unit and do not always indicate, in exact detail, where a crop was produced within the county.

Production and unit of measure.—The quantity harvested includes the total production of each crop whether sold, or to be sold, or used on the farm. In some instances, the enumerator may have reported as quantity harvested only the portion of the crop which was sold. For tenants and croppers, the landlord's share was included in the report for the farm of the operator. Production figures generally relate to the crop year preceding the date of the census. When this is not the case, the text discussion for the individual crops sets forth the particular crop season covered and the tables carry appropriate references. All fruit production in the 1945 Census was reported on a fresh-fruit basis. In the regions where tons were called for, the schedule provided for reporting tenths of tons.

The unit of measure for reporting production of some crops has varied from one census to another. A regionalized schedule, as was used for the 1945 and 1940 Censuses, made it possible to secure the production in the unit of measure most commonly used in a particular region. In the 33 parts of volume I showing data by counties, the production of each crop is shown in the unit called for on the schedule for the region in which the State is located. In the tables of this volume, the production for an individual crop is shown in a common unit for all States. In censuses prior to 1940, the production of a crop was quite generally, though not universally, reported in a standard unit for all States, with the result that the quantity harvested was frequently sought in terms of containers or units of measure not widely used or not used at all in some areas.

Table 2 presents the conversion factors used in translating 1945 Census statistics to a common unit for those crops for which the unit of measure was not standard for all regions.

Value.—In general, the values shown in the 1945, 1940, and 1930 Census reports were obtained by multiplying the number of units of the crop harvested in each county by an average unit price. For most items these unit prices were county averages obtained and calculated cooperatively by the Bureau of the Census and the Bureau of Agricultural Economics of the Department of Agriculture. These unit values were based, for the most part upon the average prices reported by correspondents to the Division of Agricultural Statistics of the Bureau of Agricultural

Economics. In 1935, the values were calculated by States only, using State average unit prices. In 1925, values were calculated by counties, using average unit prices established, in most instances, for crop-reporting districts (groups of contiguous counties).

For the 1920 Census, values were calculated by counties, using State average unit prices for each crop. Prior to 1920, the value of all fruits and nuts were enumerated. The values of horticultural specialties sold were secured by the enumerators for each year that an inquiry has been carried on a schedule.

Comparability of statistics.—Comparability of the data for the different censuses may have been affected by a change in the type of schedule used, a change in the wording of the specific inquiries, the inclusion or exclusion of inquiries for crops not widely grown, the date of enumeration, and many other factors. Reference has already been made to the comparability of the 1945 Census data for those crops for which an inquiry was not carried for all regions with the data for previous censuses. Reference notes or comments in the text under the individual crops call attention to the most important differences from year to year, particularly those resulting from changes in the schedule.

When totals for 1944 are available only for Specified States, subtotals for The North, The South, and The West are not shown in the division and State tables; however, subtotals are shown for any of the 9 geographic divisions when data are shown for one or more of the component States. As a warning to the user, incomplete geographic division totals are italicized.

Some of the current and historical data for the acreage and value of specified fruits and nuts and horticultural specialties, listed in tables 3 and 4, have been summarized and are shown in table 1 along with other subtotals for specified field crops and vegetables. Separate data for the crops comprising the broad groupings "field crops" and "vegetables" are shown in chapter VIII. An analysis of the over-all acreage for all specified crops is made in that chapter by contrasting such totals with "land acres" or "cropland harvested" and with the acreage of all crops as recorded in several of the previous censuses.

Individual crops.—Data for individual small fruits are presented for the United States in table 3 and by divisions and States in table 5. Likewise, data for individual tree fruits and nuts are presented for the United States in table 4, and for divisions and States in tables 6 to 23, inclusive. The composite value of horticultural specialties sold, although not shown separately in table 1, is shown by divisions and States in table 24 along with farms reporting. In presenting these statistics, certain percentages and averages are shown to facilitate analysis and use of the data. The production of all fruits is given on a fresh basis, even though some of the fruit may have been dried.

Small fruits.—The 1945 Farm and Ranch Schedule called for the acreage and production of individual small fruits, as follows: strawberries in all regions; raspberries in regions 1, 2, 5, and 7; blackberries and dewberries in regions 1, 2, 4, 5, and 7 (the word "dewberries" was omitted from the inquiry in region 4); blueberries (tame and wild) in region 1; and boysenberries, loganberries, and youngberries in region 7 (see Introduction to this volume for States included in each region). No figures are available from the 1945 Census for other small fruits. Wild blueberries were to be reported (region 1) only when grown on land used primarily for their production.

In 1940, a separate inquiry was carried on each regional schedule for the acreage and production of the individual berry crops important in the area. The acreage and production of all other small fruits were obtained separately under a "catch-all" question where the name of the fruit, along with the numerical data, was entered by the enumerator. In 1935, data were secured for strawberries only. The data for that census include some planted acreage from which no crop was harvested in 1934.

The acreage of strawberries harvested in 1944 was 72,503, or 58.6 percent smaller than the 1939 total of 175,217 and 70.1 percent less than the 242,829 reported for 1929. The 1944 acreage of raspberries for the Specified States was 43,834, which compares with 57,817 acres for the same States in 1939. For blackberries and dewberries, the 21,791 acres in 1944, for Specified States, compare with 25,870 acres for the same States in 1939. Again, the blueberry acreage of 43,238 in 1944 for

CENSUS OF AGRICULTURE: 1945

Table 3.—SPECIFIED SMALL FRUITS—FARMS REPORTING, ACREAGE, PRODUCTION, AND VALUE, FOR THE UNITED STATES: 1899 TO 1944

[Figures for divisions and States in table 5]

FRUIT AND YEAR	FARMS REPORTING		ACREAGE					PRODUCTION (QUARTS)			VALUE OF PRODUCTION (DOLLARS)				
	Number	Per- cent of all farms	Total	Increase or decrease (-)		Percent of cropland har- vested ¹	Average per farm re- porting	Total	Increase or decrease (-)		Average yield per acre	Total	Increase or decrease (-)		Average per quart
				Acres	Per- cent				Quantity	Per- cent			Amount	Per- cent	
Specified small fruits, total..... ² 1944..	(*)	(*)	185,975	-114,562	-38.1	0.1	(*)	(*)	(*)	(*)	(*)	47,013,343	5,637,447	13.6	(*)
1939..	351,550	5.8	300,537	-67,122	-18.3	0.1	0.9	(*)	(*)	(*)	(*)	41,375,896	-17,717,111	-30.0	(*)
1929..	(*)	(*)	367,659	147,843	67.3	0.1	(*)	(*)	(*)	(*)	(*)	59,093,007	2,584,665	4.6	(*)
1919..	545,823	8.5	219,816	-20,901	-8.7	0.1	0.4	(*)	(*)	(*)	(*)	56,508,342	29,552,308	109.6	(*)
1909..	(*)	(*)	240,717	-21,773	-8.3	0.1	(*)	(*)	(*)	(*)	(*)	26,956,034	-----	-----	(*)
1899..	(*)	(*)	262,490	-----	-----	0.1	(*)	(*)	(*)	(*)	(*)	(*)	(*)	(*)	(*)
Blackberries and dew- berries..... ² 1944..	32,917	0.6	21,791	-4,815	-18.1	(*)	0.7	20,089,227	-8,086,143	-28.6	922	4,038,240	1,704,728	73.1	0.20
1939..	55,005	0.9	26,606	-17,289	-39.4	(*)	0.5	28,125,370	-10,457,961	-27.1	1,057	2,333,512	-2,026,907	-46.5	0.08
1929..	113,308	1.8	43,895	-2,270	-4.9	(*)	0.4	88,583,351	-1,361,727	-3.4	879	4,360,419	-2,757,553	-88.7	0.11
1919..	146,079	2.3	46,165	-2,839	-5.8	(*)	0.3	39,945,078	-15,398,492	-27.8	865	7,117,972	3,208,141	82.1	0.18
1909..	141,157	2.2	49,004	-1,207	-2.4	(*)	0.3	55,343,570	-6,846,315	-11.0	1,129	3,909,831	-----	-----	0.07
1899..	(*)	(*)	50,211	-----	-----	(*)	(*)	62,189,885	-----	-----	1,239	(*)	(*)	(*)	(*)
Blueberries..... ² 1944..	3,746	0.1	43,238	11,962	38.2	(*)	11.5	7,148,148	-1,719,243	-19.4	165	2,739,134	1,733,365	172.3	0.38
1939..	5,016	0.1	31,276	11,221	56.0	(*)	6.2	8,867,391	3,922,520	79.3	284	1,005,769	18,225	1.8	0.11
1929..	3,016	(*)	20,055	-----	-----	(*)	6.6	4,944,871	-----	-----	247	987,544	-----	-----	0.20
Boysenberries, loganberries, and youngberries..... ² 1944..	4,572	0.1	4,809	-3,580	-42.7	(*)	1.1	8,115,038	-7,040,003	-46.5	1,687	1,604,600	177,088	12.4	0.20
1939..	(*)	(*)	8,389	-----	-----	(*)	(*)	15,155,041	-----	-----	1,807	1,427,512	-----	-----	0.09
Boysenberries..... ² 1939..	2,664	(*)	1,932	-----	-----	(*)	0.7	3,579,768	-----	-----	1,858	434,663	-----	-----	0.12
Loganberries..... ⁵ 1939..	3,414	0.1	2,815	-1,350	-32.4	(*)	0.8	5,574,719	-2,717,454	-32.8	1,980	343,822	-337,362	-49.5	0.06
1929..	4,188	0.1	4,165	187	4.7	(*)	1.0	8,292,173	-3,830,889	-31.6	1,991	681,184	-1,108,831	-61.9	0.08
1919..	7,033	0.1	3,978	-----	-----	(*)	0.6	12,128,062	-----	-----	3,048	1,790,015	-----	-----	0.15
Youngberries..... ² 1939..	5,271	0.1	3,642	-----	-----	(*)	0.7	6,000,534	-----	-----	1,648	649,027	-----	-----	0.11
Raspberries..... ² 1944..	75,413	1.3	43,634	-15,415	-26.1	(*)	0.6	33,820,616	-24,302,196	-41.8	775	10,918,029	3,501,749	47.2	0.32
1939..	123,933	2.0	59,049	2,334	4.1	(*)	0.5	58,122,812	4,393,011	8.2	984	7,416,280	-2,480,406	-25.1	0.13
1929..	188,284	2.2	56,715	6,487	12.8	(*)	0.4	53,729,801	4,519,354	9.2	947	9,896,686	-1,699,424	-14.7	0.18
1919..	153,953	2.4	50,278	1,610	3.3	(*)	0.3	49,210,447	-11,707,749	-19.2	979	11,596,110	6,463,838	125.9	0.24
1909..	116,929	1.8	48,668	-12,228	-20.1	(*)	0.4	60,918,196	-15,709,911	-20.5	1,252	5,132,277	-----	-----	0.08
1899..	(*)	(*)	60,916	-----	-----	(*)	(*)	76,628,107	-----	-----	1,288	(*)	(*)	(*)	(*)
Strawberries..... ² 1944..	139,688	2.4	72,503	-102,714	-58.6	(*)	0.5	86,305,683	-184,707,147	-68.2	1,190	27,713,340	-1,479,483	-5.1	0.32
1939..	233,871	3.8	175,217	-51,779	-22.8	0.1	0.7	271,012,830	17,293,647	6.8	1,547	29,192,823	6,475,432	28.5	0.11
1934..	198,977	2.9	226,996	-15,833	-6.5	0.1	1.1	253,719,183	-77,153,143	-23.3	1,118	22,717,391	-20,449,788	-47.4	0.09
1929..	358,104	5.7	242,829	49,654	25.7	0.1	0.7	330,872,328	(**)	(**)	1,363	43,167,174	(**)	(**)	0.13
1924..	136,675	2.1	193,175	73,780	61.8	0.1	1.4	(*)	(*)	(*)	(*)	(*)	(*)	(*)	(*)
1919..	323,186	5.0	119,395	-23,560	-16.5	(*)	0.4	176,931,550	-78,770,485	-30.8	1,482	36,004,245	18,090,319	101.0	0.20
1909..	216,544	3.4	143,045	-8,318	-5.5	(*)	0.7	255,702,035	-1,725,068	-0.7	1,788	17,913,926	-----	-----	0.07
1899..	280,195	4.9	151,363	-----	-----	0.1	0.5	257,427,103	-----	-----	1,701	(*)	(*)	(*)	(*)

*Not available.

**Available data not comparable; see text.

¹For years prior to 1924, percentages are based on the total acreage of crops for which figures are available.²Totals and derived figures are for States for which separate inquiry was carried on schedule. See text discussion.³Farms reporting any small fruits.⁴0.05 percent or less.⁵Loganberries included with raspberries in 1909 and 1899.

Specified States compares with 30,154 acres in 1939. The 1944 acreage of 4,809 for boysenberries, loganberries, and youngberries for region 7 (Idaho, Oregon, and Washington) compares with 5,434 acres harvested in those States in 1939.

Land in fruit orchards, vineyards, and planted nut trees.—This inquiry was carried on the schedules for each of the 7 regions in 1945. It called for the acreage of land in fruit trees, vineyards, and planted nut trees on January 1, 1945. The acreage does not include land occupied by wild or seedling nut trees or the land in nurseries.

On many farms, there are a few fruit or planted nut trees or grapevines which are not a part of a well defined orchard or vineyard. In many such cases, although data were secured for the number of trees or vines, with or without production, no acreage was supplied by the enumerator. Unless there were sufficient trees to equal the number usually planted on two acres, an acreage was not supplied in the office editing. For this reason, the number of farms reporting specific tree fruits or nuts may exceed the number of farms reporting land in fruit orchards, vineyards, and planted nut trees. Thus, in the 1945 Census, 1,219,678 farms reported a land area for their orchards or groves, whereas 1,840,468 farms reported apple trees as of the census date and/or production of apples in 1944.

Apples.—Inquiries for the number of apple trees of all ages and for the production were carried on the 1945 schedule for all regions. The 65,775,697 trees of all ages represent a

decrease of 8.2 percent from the 71,663,067 trees reported for 1940, and a decrease of 34.3 percent from the 1935 figure of 100,054,047 trees. The production of apples was reported in bushels for all regions except region 6 (Arizona and California) where it was reported in tons. In the tables in this chapter, the production is shown in bushels. The conversion from tons to bushels was made on the basis of 48 pounds = 1 bushel.

During the editing of the 1945 reports for the State of Washington, it was found that the average production of apples per tree was exceedingly high for many farms. This raised the question as to the unit of measure that was being used. Approximately 800 letters were written to farm operators asking information about the type of containers used and the weight of apples they held. Replies to these letters indicated that most of the growers reported their production on the basis of field boxes, while others reported on the basis of packed boxes. In the case of growers reporting on the basis of packed boxes, the quantity of culls was not included. The replies also brought out that both the field boxes and packed boxes held less than 48 pounds of fruit. The weight of apples in field boxes ranged from 30 to 36 pounds, with most growers reporting from 32 to 34 pounds. The packed boxes of apples ranged from 42 to 48 pounds, with most growers reporting 44 to 45 pounds. Since the unit of measure specified on the schedule for region 7 is bushels, and the average weight of a bushel of apples is 48 pounds, the production figure shown for the State of Washington for 1944 is

possibly higher than the actual production, if measured in bushel containers.

Cherries.—Inquiries for cherries were carried on the 1945 schedule in all regions except region 3 (Florida). The production was reported in pounds except for Arizona and California where tons were specified as the unit of measure. The total of 11,989,659 cherry trees in 1945 is slightly under the 12,228,521 enumerated in 1940. The 1935 Census recorded 15,074,004 cherry trees.

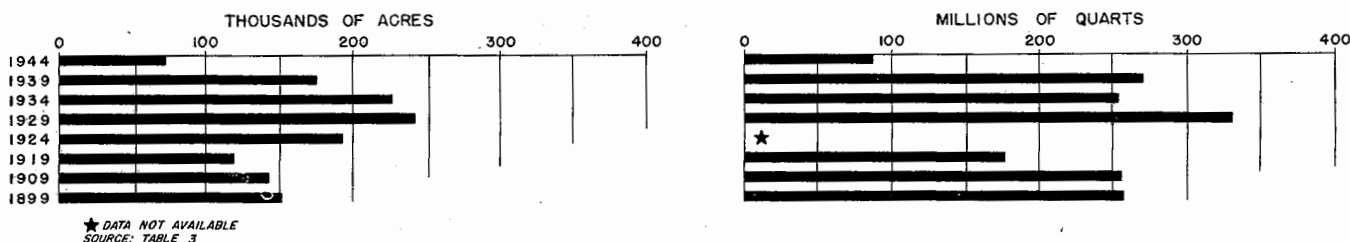
Peaches.—The number of trees of all ages and the production of peaches were required on the 1945 schedule for all regions. The production was reported in bushels for all regions except region 6 (Arizona and California) where the unit of measure was tons. The factor used for converting peach production to bushels was 48 pounds = 1 bushel. The number of peach trees of all ages has changed only slightly in the last 10 years. The total of 96,470,131 trees reported in 1945 is only 3.5 percent smaller than the 98,867,222 trees in 1940 and less than one percent below the 97,089,082 trees reported in 1935.

Pears.—Information on the number of trees of all ages and the production of pears was obtained for all regions in 1945. For this crop, the production was also reported in bushels, except for Arizona and California where tons was the specified unit of measure. The production in these States was converted to bushels on the basis of 50 pounds = 1 bushel. The 1934 production of pears in California and the 1929 production in California and selected counties in Arizona, Idaho, Oregon, and Washington were also in tons. The production figures, when published in the general summary tables in 1935 and 1930, were converted to bushels for these States by using the conversion factor of 56 pounds per bushel. Research since 1935 indicates that the weight per bushel of pears should be 50 pounds. For the summary tables shown in the 1940 Census reports, the 1934 and 1929 production figures were recomputed.

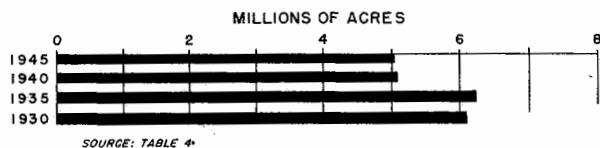
The number of pear trees of all ages has been declining. The 1945 total is 13,375,766; whereas, the 1940 Census recorded 14,460,418 trees and the 1935 Census, 19,433,137 trees.

Plums and prunes.—Two columns were provided on the 1945 schedule for each region to report the number of trees of all

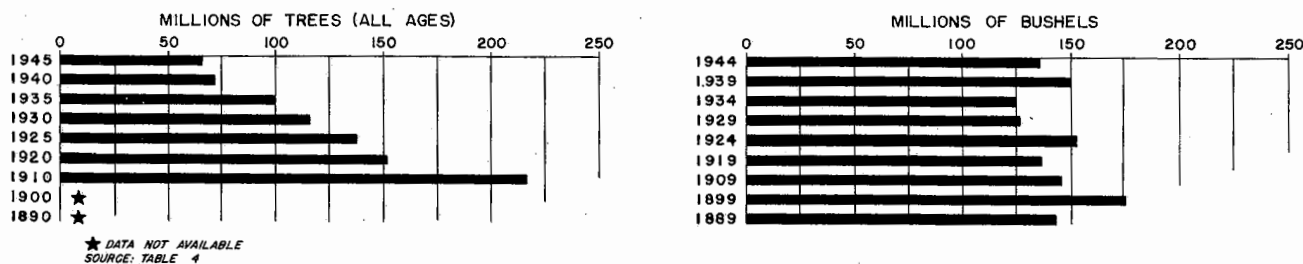
STRAWBERRIES—ACREAGE AND PRODUCTION, FOR THE UNITED STATES: 1899 TO 1944



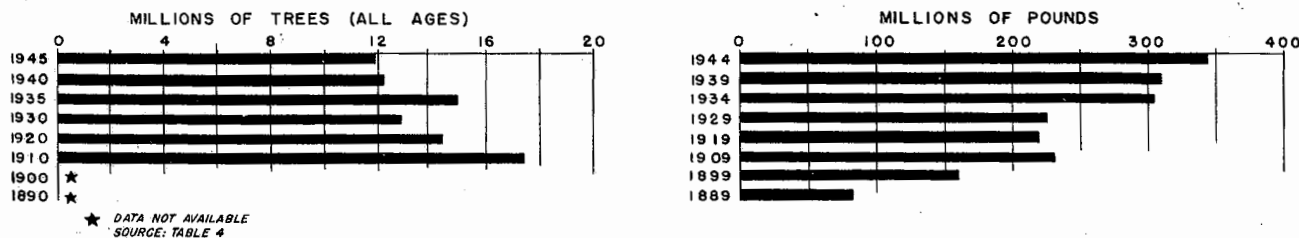
LAND IN FRUIT ORCHARDS—ACREAGE, FOR THE UNITED STATES: 1930 TO 1945



APPLES—NUMBER OF TREES (ALL AGES), 1910 TO 1945; AND PRODUCTION, 1889 TO 1944; FOR THE UNITED STATES



CHERRIES — NUMBER OF TREES (ALL AGES), 1910 TO 1945; AND PRODUCTION, 1889 TO 1944; FOR THE UNITED STATES



CENSUS OF AGRICULTURE: 1945

Table 4.—SPECIFIED TREE FRUITS, NUTS, AND GRAPES—FARMS REPORTING, NUMBER OF TREES OR VINES, PRODUCTION, AND VALUE, FOR THE UNITED STATES: 1890 TO 1945

[Percent not shown when more than 1000. Figures for divisions and States are shown in tables 6 to 23]

FRUIT AND YEAR	FARMS REPORTING		NUMBER OF TREES OR VINES (ALL AGES)			PRODUCTION ¹				VALUE (DOLLARS) ¹			
	Number	Percent of all farms	Total	Increase or decrease (-)		Unit	Total	Percent increase or decrease (-)	Yield per tree or vine ²	Total	Percent increase or decrease (-)	Average per unit	Average per tree or vine ²
				Number	Percent								
Specified tree fruits, nuts, and grapes (nurseries excluded).....1945..	(*)	(*)	XXXXXXXXXX	XXXXXXXXXX	XXXXXX	XXXXXXXXXX	XXXXXXXXXX	XXXXXX	XXXXXX	1,237,300,098	256.8	XXXXXX	XXXXXXXXXX
1940..	(*)	(*)	XXXXXXXXXX	XXXXXXXXXX	XXXXXX	XXXXXXXXXX	XXXXXXXXXX	XXXXXX	XXXXXX	946,773,068	-6.2	XXXXXX	XXXXXXXXXX
1935..	(*)	(*)	XXXXXXXXXX	XXXXXXXXXX	XXXXXX	XXXXXXXXXX	XXXXXXXXXX	XXXXXX	XXXXXX	369,543,497	-36.5	XXXXXX	XXXXXXXXXX
1930..	(*)	(*)	XXXXXXXXXX	XXXXXXXXXX	XXXXXX	XXXXXXXXXX	XXXXXXXXXX	XXXXXX	XXXXXX	582,059,238	-12.5	XXXXXX	XXXXXXXXXX
1920..	(*)	(*)	XXXXXXXXXX	XXXXXXXXXX	XXXXXX	XXXXXXXXXX	XXXXXXXXXX	XXXXXX	XXXXXX	666,253,560	252.4	XXXXXX	XXXXXXXXXX
1910..	(*)	(*)	XXXXXXXXXX	XXXXXXXXXX	XXXXXX	XXXXXXXXXX	XXXXXXXXXX	XXXXXX	XXXXXX	189,055,420	-----	XXXXXX	XXXXXXXXXX
Land in fruit orchards, vineyards, and planted nut trees.....1945..	1,219,678	20.8	³ 5,000,556	-44,375	-0.9	XXXXXXXXXX	-----	-----	-----	-----	-----	-----	-----
1940..	1,230,485	20.2	³ 5,044,931	-1,175,748	-18.9	XXXXXXXXXX	-----	-----	-----	-----	-----	-----	-----
1935..	2,041,318	30.0	³ 6,220,679	134,503	2.2	XXXXXXXXXX	-----	-----	-----	-----	-----	-----	-----
1930..	1,875,602	29.8	³ 6,086,176	-----	-----	XXXXXXXXXX	-----	-----	-----	-----	-----	-----	-----
Specified orchard fruits, total.....1945..	(*)	(*)	XXXXXXXXXX	XXXXXXXXXX	XXXXXX	XXXXXXXXXX	XXXXXXXXXX	XXXXXX	XXXXXX	815,352,027	251.7	XXXXXX	XXXXXXXXXX
1940..	(*)	(*)	XXXXXXXXXX	XXXXXXXXXX	XXXXXX	XXXXXXXXXX	XXXXXXXXXX	XXXXXX	XXXXXX	231,861,120	-33.4	XXXXXX	XXXXXXXXXX
1930..	(*)	(*)	XXXXXXXXXX	XXXXXXXXXX	XXXXXX	XXXXXXXXXX	XXXXXXXXXX	XXXXXX	XXXXXX	348,375,998	-33.8	XXXXXX	XXXXXXXXXX
1920..	(*)	(*)	XXXXXXXXXX	XXXXXXXXXX	XXXXXX	XXXXXXXXXX	XXXXXXXXXX	XXXXXX	XXXXXX	526,542,852	224.3	XXXXXX	XXXXXXXXXX
1910..	(*)	(*)	XXXXXXXXXX	XXXXXXXXXX	XXXXXX	XXXXXXXXXX	XXXXXXXXXX	XXXXXX	XXXXXX	162,365,905	-----	XXXXXX	XXXXXXXXXX
Apples..... ⁴ 1945..	1,840,468	31.4	65,775,697	-5,887,370	-8.2	Bu.	185,968,320	-9.4	2.1	268,579,336	194.4	1.97	4.08
1940..	1,613,907	29.8	71,663,067	-28,390,980	-28.4		150,092,940	20.8	2.6	91,150,294	-19.5	0.61	1.57
1935..	2,358,781	34.6	100,054,047	-16,250,226	-14.0		124,236,768	-1.7	1.5	113,281,865	-28.7	0.91	1.37
1930..	2,297,099	36.5	116,304,273	-21,692,255	-15.7		126,493,057	-17.3	1.4	158,947,200	-9.1	1.26	1.79
1925..	2,982,226	46.8	137,996,528	-13,507,722	-8.9		152,967,082	12.0	1.5	174,820,659	-27.6	1.14	1.69
1920..	⁵ 2,687,685	41.7	151,504,250	-65,610,438	-30.2		136,560,997	-6.1	1.2	241,573,577	190.2	1.77	2.10
1910..	2,980,398	46.9	217,114,688	(**)	(**)		145,412,318	-17.1	1.0	83,231,492	(*)	0.57	0.55
1900..	(*)	(*)	⁶ 201,794,642	81,641,847	67.9		175,397,600	22.6	0.9	(*)	(*)	(*)	(*)
1890..	(*)	(*)	⁶ 120,152,795	-----	-----		143,105,689	-----	1.2	(*)	(*)	(*)	(*)
Cherries..... ⁴ 1945..	797,257	13.6	11,969,659	-238,862	-2.0	Lb.	344,235,727	10.9	28.7	35,894,622	263.2	0.104	2.99
1940..	776,422	12.7	12,228,521	-2,845,483	-18.9		310,437,048	1.9	32.5	9,883,106	1.1	0.032	1.03
1935..	1,096,217	16.1	15,074,004	2,077,246	16.0		304,758,440	33.8	26.9	3,778,576	-42.5	0.032	0.86
1930..	867,944	13.8	12,996,758	-1,485,524	-10.3		227,754,296	3.1	27.2	17,003,841	20.0	0.075	2.03
1920..	⁷ 1,131,355	17.5	14,482,282	-2,961,422	-17.0		220,961,944	-4.4	20.5	14,166,176	95.9	0.064	1.31
1910..	⁸ 1,248,667	19.5	17,443,704	(**)	(**)		231,061,544	43.6	19.5	7,231,160	(*)	0.031	0.61
1900..	(*)	(*)	⁹ 11,943,287	6,304,528	111.8		160,915,944	94.6	13.5	(*)	(*)	(*)	(*)
1890..	(*)	(*)	⁹ 5,638,759	-----	-----		82,696,264	-----	14.7	(*)	(*)	(*)	(*)
Peaches.....1945..	1,418,726	24.2	66,470,131	-2,397,091	-3.5	Bu.	68,010,576	20.2	1.0	156,180,360	240.8	2.30	2.35
1940..	1,334,566	22.9	68,867,222	1,798,160	2.7		56,576,746	26.4	1.2	45,831,318	26.1	0.81	0.97
1935..	1,430,569	21.7	67,069,062	-11,977,234	-15.2		44,747,813	4.5	0.8	36,340,077	-33.8	0.81	0.67
1930..	1,481,242	23.6	79,046,296	-9,988,723	-11.2		42,827,017	-10.3	0.7	54,869,650	-5.5	1.28	0.93
1925..	1,881,469	29.5	89,035,019	1,771,056	2.0		47,755,377	-5.8	(7)	58,058,313	-39.3	1.22	(*)
1920..	¹ 1,521,675	23.6	87,253,963	-49,508,937	-36.2		50,685,082	42.9	0.8	95,569,868	232.1	1.89	1.46
1910..	¹ 1,843,610	29.0	135,772,900	(**)	(**)		35,470,276	129.8	0.4	28,781,078	(*)	0.81	0.30
1900..	(*)	(*)	² 99,916,598	46,081,001	85.4		15,432,603	-57.6	0.2	(*)	(*)	(*)	(*)
1890..	(*)	(*)	² 53,885,597	-----	-----		36,367,747	-----	0.7	(*)	(*)	(*)	(*)
Apricots..... ⁴ 1945..	60,584	1.0	5,641,625	-726,732	-11.4		12,798,804	10.8	2.3	33,262,801	254.8	2.60	5.90
1940..	105,455	1.7	6,388,357	-879,468	-12.1		11,548,466	40.4	2.1	9,373,873	-25.2	0.81	1.70
1930..	60,062	1.0	7,247,825	2,117,543	41.3		⁸ 28,225,889	34.2	1.4	12,524,049	2.5	1.52	2.07
1920..	522,999	0.4	5,130,232	504,366	10.9		6,130,086	47.7	1.5	12,223,552	323.3	1.99	3.18
1910..	⁵ 139,167	2.2	4,625,916	(*)	(*)		4,150,263	57.1	1.1	2,984,119	(*)	0.59	0.79
1900..	(*)	(*)	(*)	(*)	(*)		2,642,128	163.6	(*)	(*)	(*)	(*)	(*)
1890..	(*)	(*)	⁶ 1,582,191	-----	-----		1,001,482	-----	0.6	(*)	(*)	(*)	(*)
Pears.....1945..	980,990	16.7	13,875,766	-584,650	-4.0		27,788,107	11.2	2.0	63,175,101	240.5	2.27	4.55
1940..	961,433	15.8	14,460,416	-4,975,721	-25.6		24,980,749	-6.0	2.0	18,552,254	1.0	0.74	1.49
1935..	1,225,152	18.0	19,436,137	-1,834,635	-8.6		26,579,415	36.2	1.6	18,743,511	-37.9	0.71	1.12
1930..	1,079,368	17.2	21,270,772	-1,927,707	-8.3		¹⁹ 19,519,836	(*)	1.2	30,196,329	(**)	1.55	1.88
1925..	1,500,075	23.5	23,198,479	2,498,820	12.1		(*)	(*)	(*)	(*)	(*)	(*)	(*)
1920..	1,143,280	17.7	20,699,659	-3,275,750	-13.7		14,204,265	50.7	1.0	26,439,735	234.2	1.86	1.81
1910..	⁵ 1,276,366	20.1	23,975,409	(**)	(**)		8,840,733	33.4	0.6	7,910,600	(*)	0.89	0.52
1900..	(*)	(*)	⁶ 17,716,184	12,601,129	246.4		6,625,417	116.2	0.4	(*)	(*)	(*)	(*)
1890..	(*)	(*)	⁶ 5,115,055	-----	-----		3,064,375	-----	0.6	(*)	(*)	(*)	(*)
Plums and prunes.....1945..	624,488	10.7	22,715,927	-2,043,229	-8.3		19,525,441	-23.9	0.9	46,908,570	143.3	2.40	2.06
1940..	637,062	11.4	24,759,156	-5,617,168	-18.5		25,646,331	10.1	1.2	19,280,549	-2.9	0.75	0.89
1935..	921,900	13.5	30,376,324	-3,537,496	-10.4		23,296,579	16.3	0.9	19,852,955	6.5	0.85	0.73
1930..	901,462	14.3	33,913,820	-3,717,019	-9.9		20,098,147	(**)	0.7	18,645,942	(**)	0.93	0.63
1925..	1,236,416	19.4	37,630,339	7,803,278	26.2		(*)	(*)	(*)	(*)	(*)	(*)	(*)
1920..	⁵ 915,829	14.2	29,827,561	-541,029	-1.8		19,083,942	23.3	0.9	40,984,423	297.9	2.15	2.00
1910..	⁵ 1,120,130	17.6	30,368,590	(**)	(**)		15,480,170	76.6	0.7	10,239,495	(*)	0.67	0.44
1900..	(*)	(*)	⁶ 30,750,892	23,702,701	334.9		8,764,032	243.1	0.3	(*)	(*)	(*)	(*)
1890..	(*)	(*)	⁶ 7,078,191	-----	-----		2,554,392	-----	0.4	(*)	(*)	(*)	(*)
Grapes ¹²1945..	880,136	15.0	299,180,582	7,324,365	2.5	Lb.	5,240,033,691	18.8	17.5	211,551,237	459.6	0.040	0.70
1940..	762,094	12.5	291,856,317	-49,188,893	-14.4		4,409,453,142	18.2	16.1	37,789,726	-0.9	0.009	0.14
1935..	1,114,233	16.4	341,045,210	-25,799,362	-7.0		3,780,285,954	-3.9	11.5	38,115,350	-32.1	0.010	0.12
1930..	953,447	15.2	366,844,562	-14,646,584	-3.8		3,883,397,110	(**)	11.2	56,168,987	(**)	0.014	0.16
1925..	1,459,218	22.9	381,491,116	128,342,362	50.7		(*)	(*)	(*)	(*)	(*)	(*)	(*)
1920..	⁵ 1,074,592	16.7	253,148,754	-24,151,412	-8.7		2,516,840,387	11.1	11.1	95,586,621	333.9	0.038	0.42
1910..	⁵ 924,139	14.5	277,300,166	(**)	(**)		2,265,065,205	74.1	10.1	22,027,961	56.3	0.010	0.10
1900..	(*)	(*)	⁶ 182,329,714	-----	-----		1,300,984,097	-----	7.1	14,090,234	-----	0.011	0.08
Specified citrus fruits, total.....1945..	(*)	(*)	XXXXXXXXXX	XXXXXXXXXX	XXXXXX	XXXXXXXXXX	XXXXXXXXXX	XXXXXX	XXXXXX	345,663,942	279.3	(*)	(*)
1940..	(*)	(*)	XXXXXXXXXX	XXXXXXXXXX	XXXXXX	XXXXXXXXXX	XXXXXXXXXX	XXXXXX	XXXXXX				

FRUITS AND NUTS, AND HORTICULTURAL SPECIALTIES

535

Table 4.—SPECIFIED TREE FRUITS, NUTS, AND GRAPES—FARMS REPORTING, NUMBER OF TREES OR VINES, PRODUCTION, AND VALUE
FOR THE UNITED STATES: 1890 TO 1945—Continued

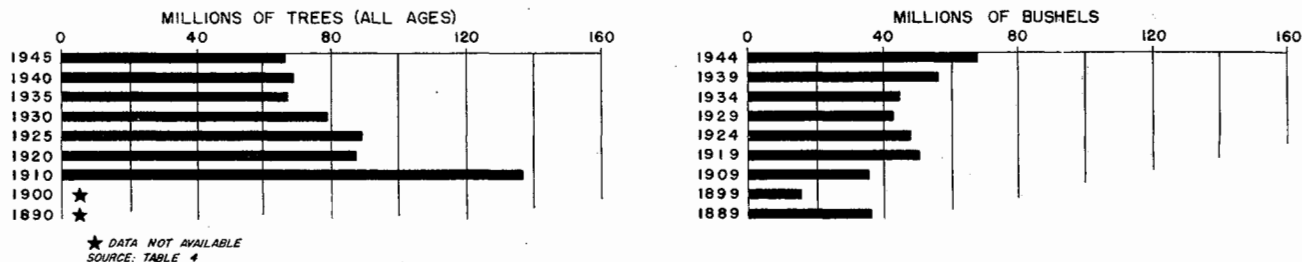
[Percent not shown when more than 1000. Figures for divisions and States are shown in tables 6 to 23]

FRUIT AND YEAR	FARMS REPORTING		NUMBER OF TREES OR VINES (ALL AGES)			Unit	PRODUCTION ¹			VALUE (DOLLARS) ¹				
	Number	Percent of all farms	Total	Increase or decrease (-)			Total	Percent increase or decrease (-)	Yield per tree or vine ²	Total	Percent increase or decrease (-)	Average per unit	Average per tree or vine ²	
				Number	Percent									
Specified citrus fruits—Con.														
Oranges (including satsumas, tangerines, and mandarins).....	1945..	(*)	(*)	40,023,443	2,870,379	7.7	Ton	3,928,894	36.8	0.10	245,085,655	300.5	62.38	6.12
	1940..	54,686	0.9	37,153,064	-1,782,585	-4.6		2,872,674	(**)	0.08	61,192,538	-46.2	21.30	1.88
	1935..	65,706	1.0	38,985,649	6,977,335	21.8	Field box	70,482,013	31.2	2.1	113,737,997	-23.4	1.61	3.43
	1930..	46,558	0.7	31,958,314	1,621,512	5.3	Box ¹¹	58,731,352	(**)	2.2	148,472,871	(**)	2.76	6.09
	1925..	58,065	0.9	30,336,802	10,669,744	54.2		(*)	(*)	(*)	(*)	(*)	(*)	(*)
	1920..	1234,565	0.5	19,667,058	5,561,566	39.4		27,833,184	42.5	1.9	88,662,713	374.2	3.01	5.79
	1910..	(12)	(*)	14,105,492	(**)	(**)		19,530,129	216.6	2.0	17,641,787	(**)	0.90	1.81
	1900..	(*)	(*)	68,395,522	(**)	(**)		6,167,891	40.4	0.7	(*)	(*)	(*)	(*)
	1890..	(*)	(*)	13,551,136				124,391,787		1.1	6,602,099		1.50	1.70
Oranges, excluding tangerines and mandarins.....														
	1945..	57,731	1.0	38,850,840	3,001,322	8.4	Ton	3,792,340	37.1	0.10	238,086,473	303.8	62.77	6.13
	1940..	(*)	(*)	35,849,518				2,767,498		0.08	58,954,578		21.30	1.64
Tangerines and mandarins.....														
	1945..	7,394	0.1	1,172,603	-130,943	-10.0		135,954	29.3	0.12	6,999,182	212.7	51.48	5.97
	1940..	10,112	0.2	1,303,546				105,176		0.08	2,237,960		21.28	1.71
Grapefruit.....														
	1945..	26,323	0.4	10,635,582	-338,453	-3.1		1,546,944	25.2	0.15	61,486,853	329.9	39.75	5.78
	1940..	26,768	0.4	10,974,035	-2,187,066	-16.6		1,235,673	(**)	0.12	14,304,130	-27.4	11.58	1.42
	1935..	23,150	0.4	13,161,101	3,924,448	42.5	Field box	19,495,340	123.5	1.9	19,693,166	-13.4	1.01	1.95
	1930..	20,598	0.3	9,236,653	4,210,348	33.8	Box ¹¹	8,722,429	(**)	1.7	22,731,632	(**)	2.61	4.45
	1925..	21,865	0.3	5,026,305	1,952,828	63.5		(*)	(*)	(*)	(*)	(*)	(*)	(*)
	1920..	11,431	0.2	3,073,477	1,722,840	127.6		3,656,437	207.5	1.9	7,176,703	-248.3	1.96	5.70
	1910..	6,172	0.1	1,850,637	(**)	(**)		1,189,250		1.7	2,060,610	(**)	1.73	2.90
	1900..	(*)	(*)	202,723	(**)	(**)		30,790	(**)	0.2	(*)	(*)	(*)	(*)
	1890..	(*)	(*)	16,146			Bbl.	10,080		0.6	27,216		2.70	8.30
Lemons.....														
	1945..	14,089	0.2	6,018,963	570,036	10.5	Ton	469,429	15.6	0.08	38,733,636	150.3	82.51	6.44
	1940..	13,717	0.2	5,448,927	2,282,493	72.1		402,609	(**)	0.09	15,472,050	-64.2	38.43	3.56
	1930..	8,848	0.1	3,166,434	-568,535	-15.2	Box ¹¹	9,388,051	41.8	3.3	48,219,543	126.3	4.63	15.31
	1920..	11,045	0.2	3,734,969	2,381,938	176.0		6,585,269	137.7	2.3	19,102,267	589.1	2.90	6.54
	1910..	5,605	0.1	1,353,031	(**)	(**)		2,770,313	215.9	2.9	2,998,738	(*)	1.08	3.13
	1900..	(*)	(*)	1,518,334				876,876		0.6	(*)	(*)	(*)	(*)
Limes.....														
	1945..	1,073	(7)	321,102	-139,040	-32.3	Lb.	8,578,189	22.6	26.7	557,798	149.1	0.07	1.74
	1940..	2,551	(7)	474,142	412,880	674.0		6,994,166	(**)	14.8	223,962	395.1	0.03	0.66
	1930..	5,585	(7)	61,262	-135,788	-68.9	Box ¹¹	8,956	-67.9	0.2	45,240	-53.6	5.05	1.03
	1920..	5,169	(7)	197,050	121,424	160.6		27,861	146.2	0.2	97,517	681.5	3.50	0.84
	1910..	6,135	(7)	75,626	(**)	(**)		11,318	-50.4	0.2	12,478	(*)	1.10	0.27
	1900..	(*)	(*)	42,052				22,839		0.5	(*)	(*)	(*)	(*)
Specified nuts, total.....														
	1945..	(*)	(*)	XXXXXXXXXX	XXXXXXXXXX	XXXXXXXXXX	XXXXXXXXXX	XXXXXXXXXX	XXXXXXXXXX	XXXXXXXXXX	76,084,129	220.8	(*)	(*)
	1940..	(*)	(*)	XXXXXXXXXX	XXXXXXXXXX	XXXXXXXXXX	XXXXXXXXXX	XXXXXXXXXX	XXXXXXXXXX	XXXXXXXXXX	23,719,268	23.4	(*)	(*)
	1930..	(*)	(*)	XXXXXXXXXX	XXXXXXXXXX	XXXXXXXXXX	XXXXXXXXXX	XXXXXXXXXX	XXXXXXXXXX	XXXXXXXXXX	19,213,954	-35.2	(*)	(*)
	1920..	(*)	(*)	XXXXXXXXXX	XXXXXXXXXX	XXXXXXXXXX	XXXXXXXXXX	XXXXXXXXXX	XXXXXXXXXX	XXXXXXXXXX	29,671,508	645.3	(*)	(*)
	1910..	(*)	(*)	XXXXXXXXXX	XXXXXXXXXX	XXXXXXXXXX	XXXXXXXXXX	XXXXXXXXXX	XXXXXXXXXX	XXXXXXXXXX	3,980,902		(*)	(*)
Almonds.....														
	1945..	12,638	0.2	6,668,587	1,197,909	21.9	Lb.	54,184,000	13.1	8.1	20,806,880	322.8	0.38	3.12
	1940..	11,551	0.2	5,470,678	1,060,438	24.0		47,910,710	409.5	11.0	4,920,696	118.0	0.10	1.13
	1930..	9,216	0.1	4,410,240	558,142	14.5		9,403,155	-40.7	2.4	2,257,043	-43.1	0.24	0.58
	1920..	512,845	0.2	3,852,098	2,274,561	144.2		15,852,965	133.4	6.5	3,963,264	456.7	0.85	1.63
	1910..	57,815	0.1	1,577,537	(**)	(**)		6,793,539	-4.9	5.7	711,970		0.10	0.60
	1900..	(*)	(*)	1,649,072				7,142,710		4.3	(*)	(*)	(*)	(*)
Filberts and hazelnuts.....														
	1945..	16,214	0.3	2,149,247	733,180	51.8		11,413,856	83.6	5.3	3,118,140	344.7	0.27	1.45
	1940..	11,874	0.2	1,416,117	836,993	144.5		6,217,116		6.5	701,142		0.11	0.73
	1930..	4,678	0.1	579,124				412,118		1.8	57,879		0.14	0.25
Pecans (improved and seedling) ¹⁴														
	1945..	318,675	5.4	10,423,093	-538,098	-4.9		98,179,888	34.8	9.4	21,553,220	190.6	0.22	2.07
	1940..	278,146	4.6	10,961,191	1,814,116	19.8		72,838,334	178.5	8.5	7,416,391	68.4	0.10	0.86
	1930..	195,710	3.1	9,147,075	273,108	3.1		26,150,546	(**)	4.8	4,403,696	(**)	0.17	0.81
	1925..	231,171	3.6	8,873,972	3,944,439	80.0		(*)	(*)	(*)	(*)	(*)	(*)	(*)
	1920..	5102,052	1.6	4,929,479	1,524,892	49.2		31,808,548	221.6	11.9	7,792,086	702.0	0.24	2.92
	1910..	37,549	0.6	3,304,587	(*)	(*)		9,890,769	208.4	6.1	971,596		0.10	0.60
	1900..	(*)	(*)	(*)	(*)	(*)		3,206,850		(*)	(*)	(*)	(*)	(*)
Walnuts, English or Persian.....														
	1945..	47,385	0.8	3,667,522	272,690	8.0		120,510,951	-6.2	32.9	27,475,692	158.5	0.23	7.49
	1940..	44,231	0.7	3,394,832	-126,009	-3.6		128,453,713	64.3	44.8	10,628,516	-14.9	0.08	3.70
	1930..	31,678	0.5	3,520,841	1,547,538	78.4		78,159,951	30.6	34.2	12,489,367	-30.3	0.16	5.46
	1920..	23,798	0.4	1,973,303	252,620	14.7		59,840,407	171.7	43.0	17,916,158	679.9	0.30	12.89
	1910..	16,867	0.3	1,720,683	(**)	(**)		22,026,524	106.5	24.1	2,297,386		0.10	2.51
	1900..	(*)	(*)	726,798				10,668,065		14.7	(*)	(*)	(*)	(*)
Tung nuts.....														
	1945..	4,160	0.1	159,583,037	13,088,257	-24.4		62,693,347		6.5	3,130,197		0.05	0.38
	1940..	2,304	(7)	12,671,344	9,038,983	246.8		2,321,139	(**)	0.6	52,523	(**)	0.02	0.01
	1935..	627	(7)	3,632,361	3,281,568	985.5		(*)	(*)	(*)	(*)	(*)	(*)	(*)
	1930..	144	(7)	350,798				119,310		13.3	5,969		0.05	0.67

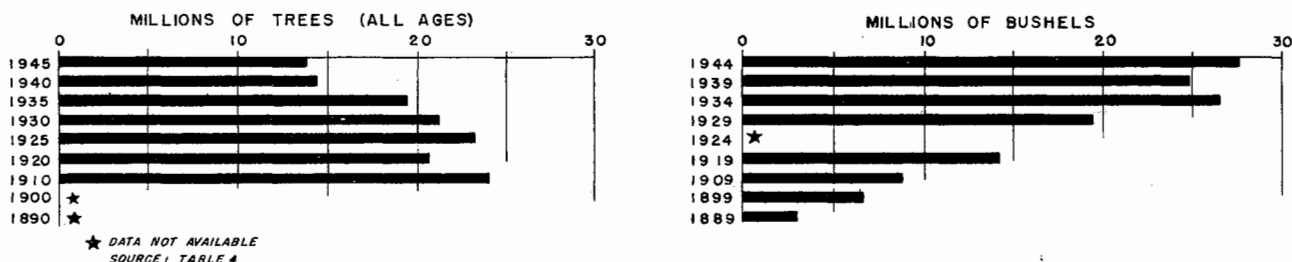
*Not available.
 **Available data not comparable; see text.
¹Data for production and value are for the calendar year preceding the date of enumeration, with the following exceptions: citrus fruit in the 1945 Census which covered fruit harvested in the 1943-44 season (from the bloom of 1943); for 1940, the production is for 1939-40 season (from the bloom of 1939) for all citrus-producing States except Arizona and California for which the production is for the 1938-39 season (from the bloom of 1933); and in the Census of 1890, the products are for the year ending June 1 of the census year.
²For years prior to 1945 averages computed on basis of bearing trees only.
³Acres.
⁴Totals and derived figures are for States for which separate inquiry was carried on schedule. See text discussion.
⁵Farms reporting trees or vines of bearing age.
⁶Trees or vines of bearing age only.
⁷0.05 percent or less.
⁸Nectarines included.
⁹Recomputed on basis of revised conversion factors. See text discussion.
¹⁰In 1890 there were 93,686 acres in nonbearing vines, 307,575 acres in bearing vines, and 572,139 tons of grapes sold for table use, to wineries, etc.
¹¹Boxes; kind not specified.
¹²Farms reporting trees of bearing age. For oranges, figures are for farms reporting oranges other than tangerines or mandarins. In 1920 tangerine trees of bearing age were reported on 809 farms. In 1910 tangerine trees of bearing age were reported on 322 farms and mandarin trees of bearing age on 22 farms.
¹³Does not include production for Louisiana which was given in number of fruits and amounted to 2,208,750 oranges.
¹⁴Improved and seedling in 1945; improved and wild in 1940; cultivated and wild in 1930 and 1925; not specified prior to 1925 whether or not both were to be reported.
¹⁵See text discussion.

CENSUS OF AGRICULTURE: 1945

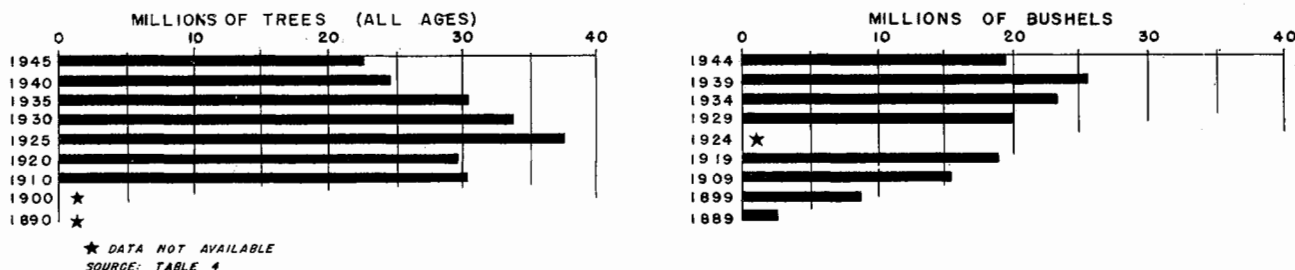
PEACHES—NUMBER OF TREES (ALL AGES), 1910 TO 1945; AND PRODUCTION, 1889 TO 1944; FOR THE UNITED STATES



PEARS — NUMBER OF TREES (ALL AGES), 1910 TO 1945; AND PRODUCTION, 1889 TO 1944; FOR THE UNITED STATES



PLUMS AND PRUNES—NUMBER OF TREES (ALL AGES), 1910 TO 1945; AND PRODUCTION, 1889 TO 1944; FOR THE UNITED STATES



ages and the production. The production, on a fresh basis, was reported in bushels in all regions except regions 6 and 7 (Arizona, California, Idaho, Oregon, and Washington) where tons were specified. The production of plums and prunes is shown in bushels in the tables of this chapter. Production for the five States of regions 6 and 7 was converted to bushels on the basis of 56 pounds = 1 bushel.

The total of 22,715,927 plum and prune trees reported in 1945 was 8.3 percent less than the 24,759,156 trees reported in 1940 and 25.2 percent less than the 30,376,324 trees shown in 1935.

Grapes.—The 1945 schedule called for the number of vines of all ages and the production of grapes in all regions. The unit of measure for production was pounds in each region except in Arizona and California, in which States the unit was tons. The number of grapevines in 1945 was 299,180,682, a slight increase from the 291,856,317 vines reported in 1940, but a decrease of 12.3 percent from the 341,045,210 vines reported in 1935.

Apricots.—An inquiry for the number of trees and the production of apricots was carried on the 1945 schedule in regions 5, 6, and 7. The production for region 5 was reported in bushels; for region 6, in tons; and for region 7, in pounds. The production figures in the tables of this chapter are shown in bushels. The conversion factor used was 48 pounds = 1 bushel. The 5,641,825 trees of all ages reported in 1945 for Specified States compare with 6,160,124 trees reported for the same States in 1940.

In those States for which a special supplementary schedule was used in 1930, production of apricots was reported in tons.

This production was then converted to bushels for the summary tables by using 56 pounds per bushel. The production of apricots, as shown in the 1930 volumes, was recomputed for the 1940 publications by using a revised conversion factor of 48 pounds per bushel.

Nuts.—The 1945 schedule carried inquiries for the number of trees of all ages and production for five kinds of nuts, as follows: almonds in region 6; filberts in region 7; pecans in regions 1, 2, 3, and 4; walnuts (English or Persian) in regions 6 and 7; and tung nuts in regions 2, 3, and 4. The unit of measure specified for all nut crops was pounds except for English walnuts in region 6, where tons were specified.

Almond trees of all ages in 1945 totaled 6,668,587 for Arizona and California which represents a large increase from the 1940 total of 5,433,652 for these States. The 1945 figure for the number of filbert trees is 2,149,247. Pecan trees of all ages reported in 1945 for Specified States was 10,423,093. This figure compares with 10,934,437 trees reported for the same Specified States in 1940. English or Persian walnut trees of all ages for the five States of the regions in which these data were collected numbered 3,667,522. The 1940 figure for these States was 3,380,028 trees.

The number of tung trees of all ages in 1945 was 9,583,087. This figure is not comparable with the number of trees in 1940. In making an analysis of the 1945 and 1940 data for tung nuts, it was found that in 1940 several enumerators in Pearl River County, Mississippi, obtained reports from managers of groves who lived in their enumeration districts, although the groves were actually located in another district. The enumerators in

the districts where the groves were located also obtained reports for the tung nut groves under the names of the owners of the property. The exact duplication could not be fully determined, but it is estimated at about 3,000,000 trees.

Citrus fruits.—Information as to the number of trees and production of five citrus fruits was called for on the 1945 schedule, as follows: oranges in regions 2, 3, 4, and 6; grapefruit in regions 3, 4, and 6; tangerines and mandarins in regions 3 and 4; limes in region 3; and lemons in region 6.

The unit of measure for reporting all citrus production in Florida (region 3) was field boxes, except for limes for which the production was reported in pounds. In region 2, where citrus production is restricted largely to satsuma oranges, production was secured in bushels. In regions 4 and 6, production reports were required in tons. In the tables of this chapter, the production of each citrus fruit is shown in tons, except for limes for which the production is given in pounds. Field boxes of oranges and tangerines and mandarins were converted to tons on the basis of 1 field box = 90 pounds; bushels of oranges on the basis of 1 bushel = 56 pounds; and field boxes of grapefruit on the basis of 1 field box = 82 pounds.

All conversion factors were established only after considerable study and consultations with specialists for individual crops in the Department of Agriculture and other agencies. These conversion factors for tangerines and oranges in Florida vary from those furnished enumerators. Those furnished enumerators were given to provide a ready means of making calculations only when records were not available in terms of units given on the schedule and, therefore, did not require the precision necessary for converting the entire production of a State. The enumerator was cautioned that the conversion factors furnished

were approximations and should be used only in the absence of more accurate figures.

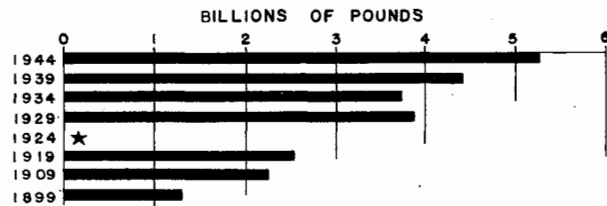
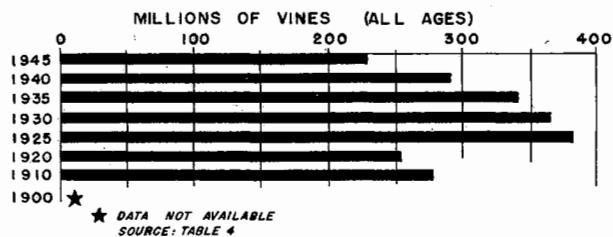
The units of measure used in 1940 were the same as for 1945. In 1935, the schedule called for the production of oranges and grapefruit in field boxes. In previous censuses, the production of these crops was reported in boxes, and the instructions to enumerators did not specify the type of box to be used. The figures for censuses prior to 1940 may not be exactly comparable and no effort has been made to convert them to tons because of insufficient knowledge of the size and type of box used in the various States.

The number of orange trees, including satsumas, tangerines, and mandarins, in 1945 was reported as 40,023,443, an increase of 7.7 percent from the 37,153,064 trees shown in 1940 and a 2.8 percent increase from the 38,935,649 trees reported in 1935. The total of 10,835,582 grapefruit trees in 1945 compares with the 10,974,035 trees reported in 1940. The 6,018,963 lemon trees reported for Arizona and California in 1945 represent a 10.5 percent increase from the 5,334,751 trees reported for these States in 1940. The number of lime trees in Florida in 1945 was 321,102, as compared with 412,617 in 1940.

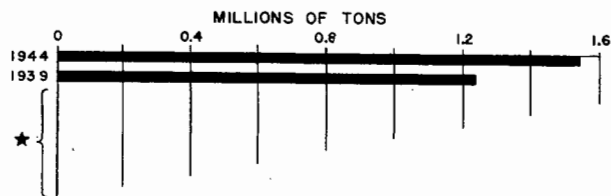
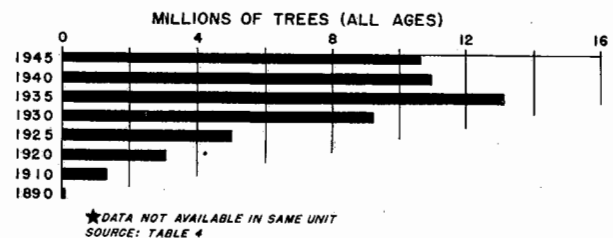
As has been mentioned, all citrus fruit production relates to the 1943-1944 season for the crop which followed the bloom of 1943.

Oranges are the only crop in the fruit-and-nut section of the 1945 Census for which information was not requested in the same detail for the several regions. In region 3 (Florida), four columns were allocated to secure the number of trees and production of "Early and midseason" and "Valencia and other late" oranges; whereas, in regions 2, 4, and 6, only two columns were provided for "Oranges." The enumerator in several Florida

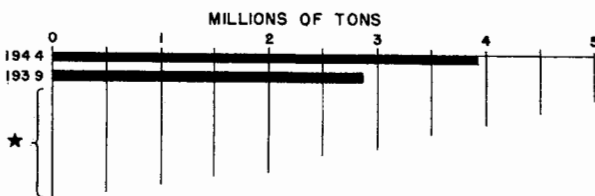
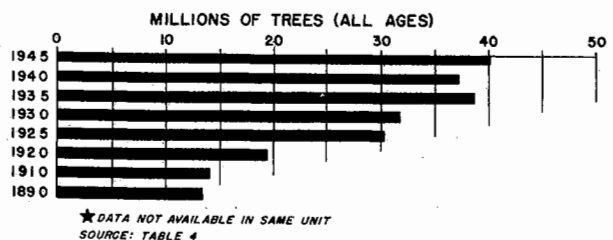
GRAPES — NUMBER OF VINES (ALL AGES), 1910 TO 1945; AND PRODUCTION, 1889 TO 1944; FOR THE UNITED STATES



GRAPEFRUIT—NUMBER OF TREES (ALL AGES), 1890 TO 1945; AND PRODUCTION, 1944 AND 1939; FOR THE UNITED STATES



ORANGES (INCLUDING SATSUMAS, TANGERINES AND MANDARINS)—NUMBER OF TREES (ALL AGES), 1890 TO 1945; AND PRODUCTION, 1944 AND 1939; FOR THE UNITED STATES



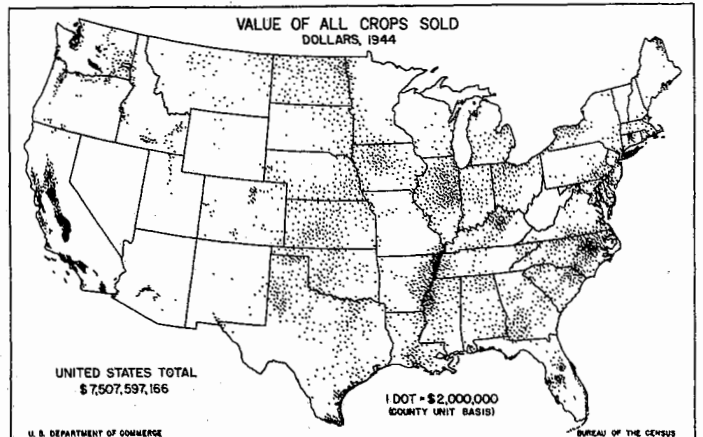
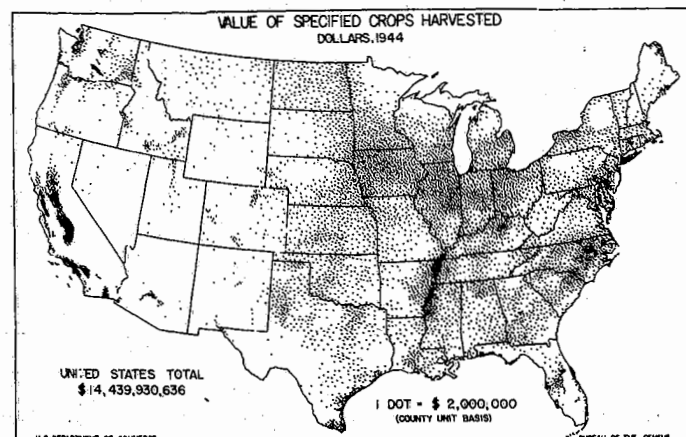
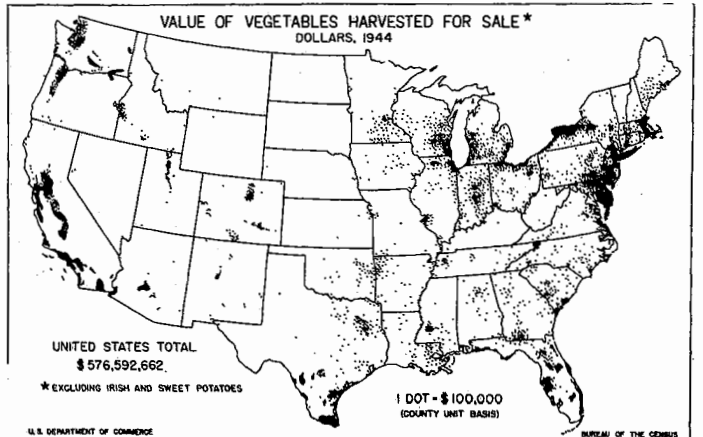
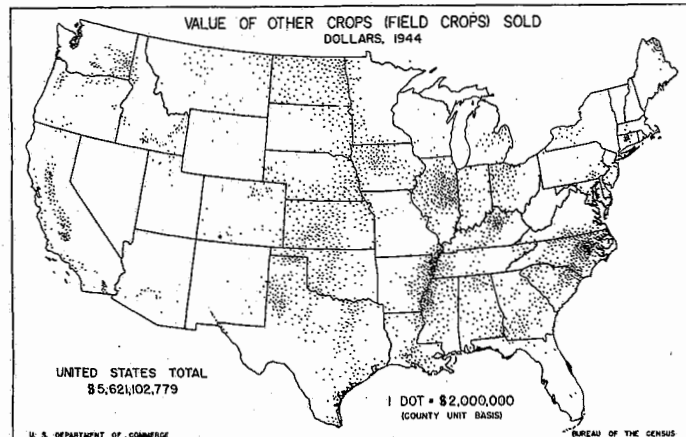
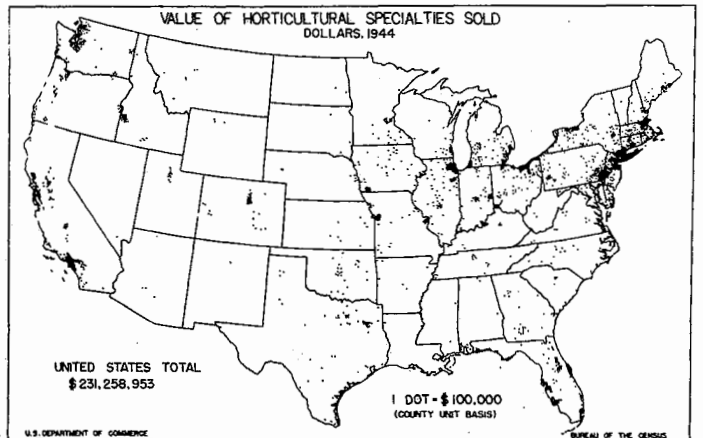
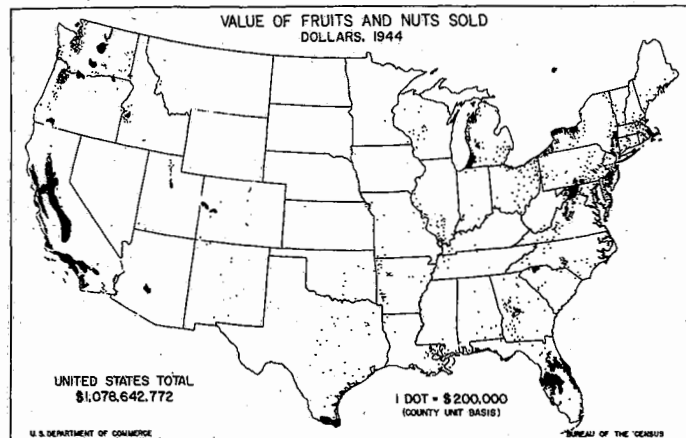
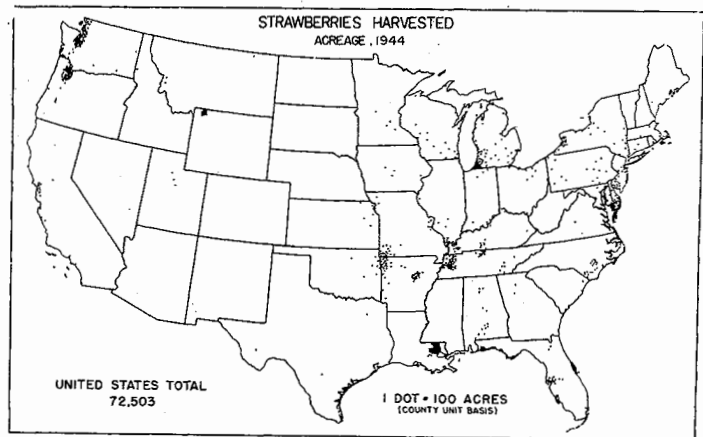
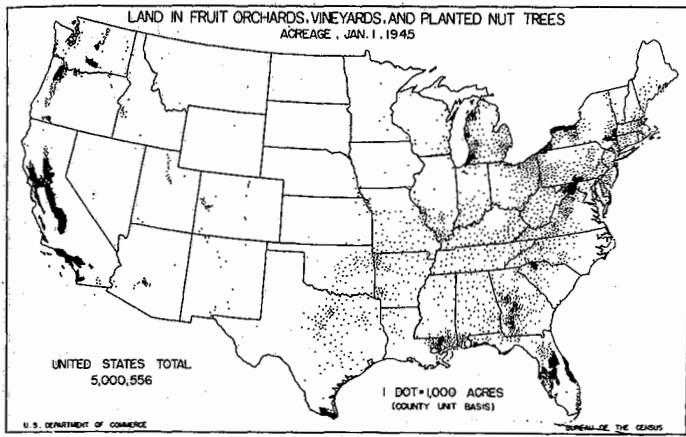
counties failed to obtain separate data for early and midseason oranges, and for valencia and other late oranges. Effort was made to obtain a break-down by correspondence with the individual farm operators, but the results were so unsatisfactory that it was decided to publish data for total oranges only.

Horticultural specialties.—The instructions on the 1945 schedule specified that horticultural specialties were to include (1) crops grown under glass (flowers, plants, and vegetables) and propagated mushrooms; (2) nursery products (trees, shrubs, vines, ornamentals, etc.); and (3) flower and vegetable seeds, bulbs, and flowers and plants grown in the open. A question for the value of horticultural specialties sold or traded was carried on all of the regional schedules in 1945. The 1940 schedule carried three questions for area and value of sales

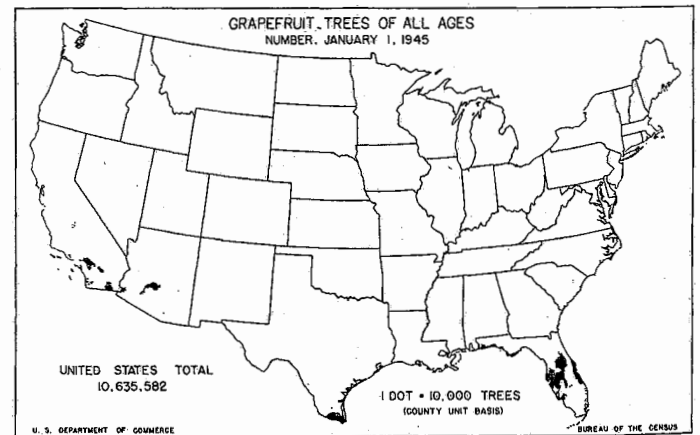
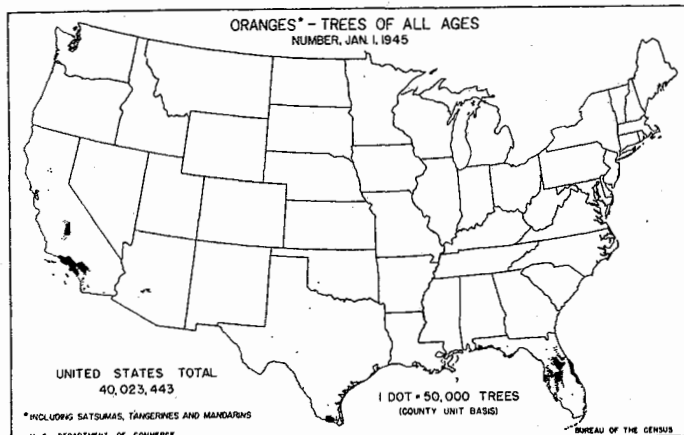
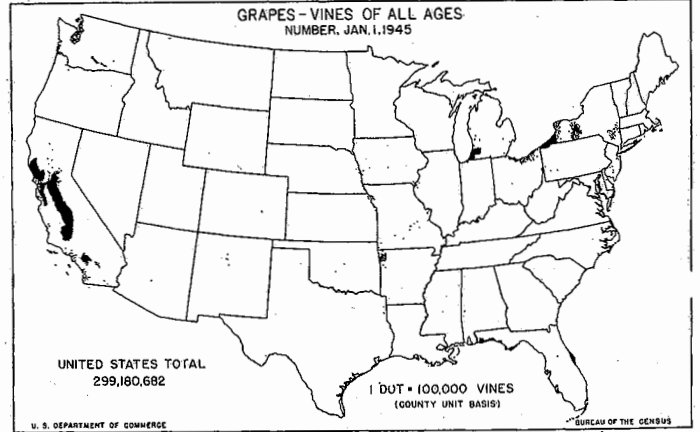
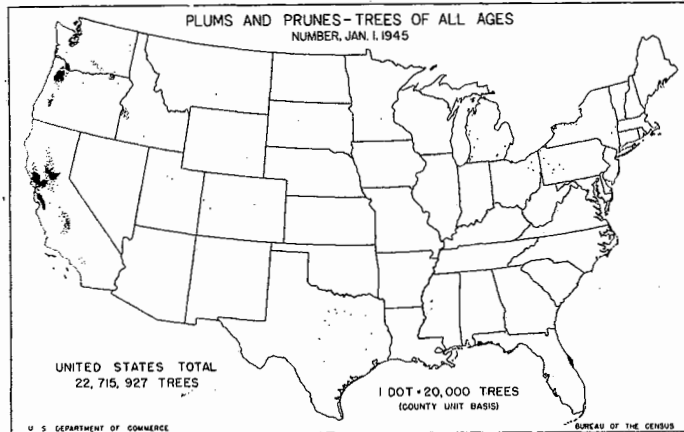
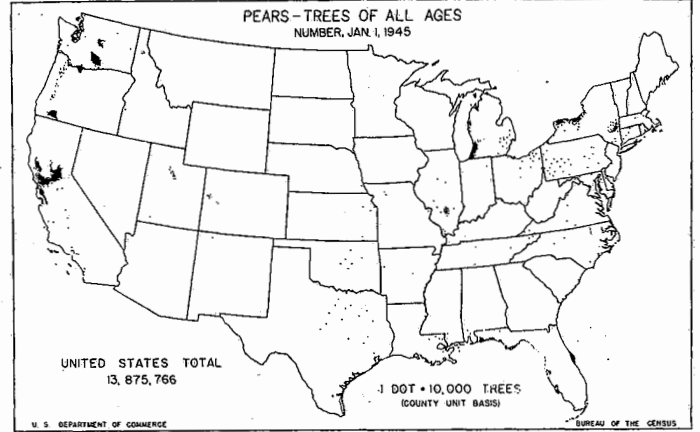
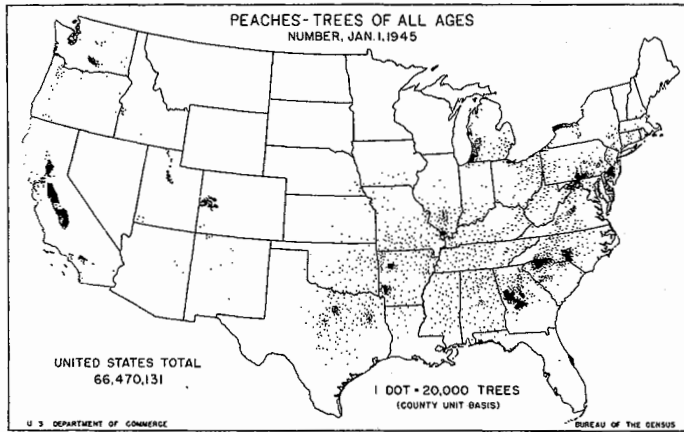
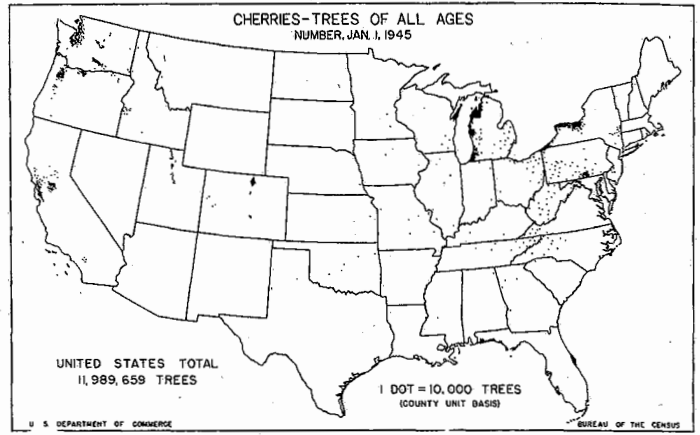
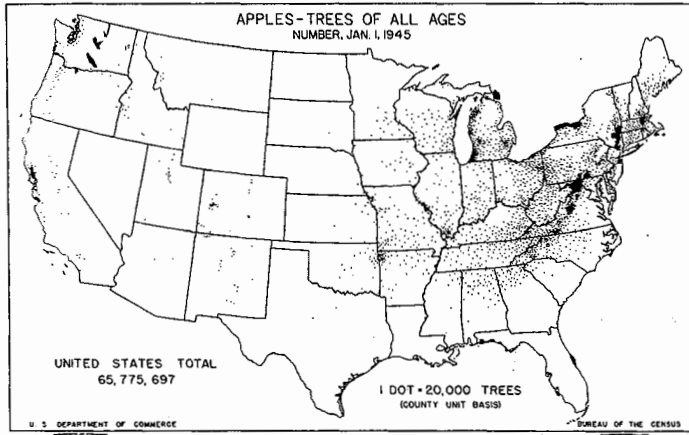
for (1) crops grown under glass and propagated mushrooms; (2) nursery products; and (3) flower and vegetable seeds, bulbs, and flowers and plants grown in the open.

No inquiries were carried for horticultural specialties on the 1935 schedule. In 1930, two questions were listed. The first called for the 1929 value of sales of trees, plants, vines, etc., in nurseries and also from sales of flower and vegetable seeds and bulbs. The second question included the value of not only flowers, plants, and vegetables grown under glass, but also flowers grown in the open.

In 1944, the value of horticultural specialties sold or traded amounted to \$231,258,953 as compared with \$129,575,143 in 1939 and \$145,702,566 in 1929.



CENSUS OF AGRICULTURE: 1945



FRUITS AND NUTS, AND HORTICULTURAL SPECIALTIES

543

VALUE, 1944 AND 1939; WITH HISTORICAL DATA FOR STRAWBERRIES; BY DIVISIONS AND STATES

BLUEBERRIES (TAME AND WILD)—Continued						BOYSENBERRIES, LOGANBERRIES, AND YOUNGBERRIES										
Acreage		Quantity harvested (quarts)		Value, 1944 (dollars)		Farms reporting, 1944	Acreage					Quantity harvested (quarts)		Value, 1944 (dollars)		
1944	1939	1944	1939	Total	Average per quart		1944	Total	1939			1944	1939	Total	Average per quart	
									Boysenberries	Loganberries	Youngberries					
(***)	31,276	(***)	8,867,391	(***)	(***)	(***)	(***)	8,389	1,932	2,815	3,642	(***)	15,155,041	(***)	(***)	1
43,238	30,154	7,140,149	8,354,180	2,739,134	0.39	4,572	4,809	5,434	1,036	2,602	1,796	8,115,038	10,194,196	1,604,600	0.20	2
43,142	30,094	7,136,519	8,341,524	2,736,235	0.38	(***)	(***)	70	48	3	19	(***)	53,463	(***)	(***)	3
06	1,144	11,629	480,757	2,809	0.25	(***)	(***)	1,108	275	5	828	(***)	832,529	(***)	(***)	4
(***)	38	(***)	45,110	(***)	(***)	4,572	4,809	7,211	1,609	2,807	2,795	8,115,038	14,269,059	1,604,600	0.20	5
34,409	24,248	3,445,379	8,396,231	919,450	0.27	(***)	(***)	1	1	---	---	(***)	826	(***)	(***)	6
6,968	2,649	2,924,054	1,100,836	1,454,185	0.50	(***)	(***)	13	10	2	1	(***)	8,614	(***)	(***)	7
2,626	2,911	758,133	815,504	359,626	0.47	(***)	(***)	32	26	1	5	(***)	21,764	(***)	(***)	8
39	286	8,953	28,953	2,974	0.33	(***)	(***)	24	11	---	13	(***)	22,249	(***)	(***)	9
06	942	11,629	359,473	2,809	0.25	(***)	(***)	75	31	2	42	(***)	59,147	(***)	(***)	10
(***)	194	(***)	118,439	(***)	(***)	(***)	(***)	62	28	1	35	(***)	51,539	(***)	(***)	11
(***)	8	(***)	2,845	(***)	(***)	(***)	(***)	971	218	2	751	(***)	722,843	(***)	(***)	12
(***)	---	(***)	---	(***)	(***)	185	48	91	29	34	28	33,826	93,491	10,109	0.30	13
(***)	38	(***)	45,110	(***)	(***)	4,387	4,761	7,120	1,580	2,773	2,767	8,081,212	14,175,568	1,594,491	0.20	14
26,839	20,136	3,016,941	5,739,020	752,602	0.25	(***)	(***)	(3)	(3)	(3)	---	(***)	7	(***)	(***)	15
3,354	2,066	295,745	310,199	112,363	0.38	(***)	(***)	(3)	(3)	(3)	---	(***)	---	(***)	(***)	16
27	18	2,067	1,786	827	0.40	(***)	(***)	(3)	(3)	(3)	---	(***)	32	(***)	(***)	17
1,409	1,800	84,889	302,790	34,855	0.41	(***)	(***)	(3)	(3)	(3)	---	(***)	580	(***)	(***)	18
45	40	3,089	6,326	1,297	0.42	(***)	(***)	(3)	(3)	(3)	---	(***)	---	(***)	(***)	19
785	110	42,648	36,130	17,486	0.41	(***)	(***)	1	1	---	---	(***)	407	(***)	(***)	20
1,135	1,343	141,035	296,731	52,149	0.37	(***)	(***)	3	1	2	---	(***)	2,110	(***)	(***)	21
1,495	875	2,705,046	735,953	1,378,387	0.51	(***)	(***)	5	5	(3)	---	(***)	3,549	(***)	(***)	22
3,438	631	78,003	68,152	23,949	0.31	(***)	(***)	5	4	---	1	(***)	2,955	(***)	(***)	23
118	82	16,013	29,487	5,266	0.35	(***)	(***)	8	7	1	(3)	(***)	5,431	(***)	(***)	24
58	463	14,363	72,108	5,259	0.37	(***)	(***)	4	3	(3)	1	(***)	4,230	(***)	(***)	25
5	(3)	3,804	353	1,102	0.29	(***)	(***)	12	8	(3)	4	(***)	7,086	(***)	(***)	26
2,434	2,305	719,082	698,445	346,184	0.48	(***)	(***)	8	8	(3)	(3)	(***)	4,995	(***)	(***)	27
11	61	4,894	15,111	1,815	0.37	(***)	(***)	(3)	(3)	---	---	(***)	22	(***)	(***)	28
39	283	7,698	26,030	2,621	0.34	(***)	(***)	(3)	(3)	(3)	(3)	(***)	307	(***)	(***)	29
(3)	2	1,255	1,231	353	0.28	(***)	(***)	1	1	(3)	(3)	(***)	1,010	(***)	(***)	30
(***)	1	(***)	877	(***)	(***)	(***)	(***)	21	10	(3)	11	(***)	18,582	(***)	(***)	31
(***)	---	(***)	---	(***)	(***)	(***)	(***)	(***)	(***)	(***)	(***)	(***)	---	(***)	(***)	32
(***)	(3)	(***)	215	(***)	(***)	(***)	(***)	(3)	(3)	(3)	---	(***)	3	(***)	(***)	33
(***)	---	(***)	---	(***)	(***)	(***)	(***)	(3)	(3)	(3)	---	(***)	295	(***)	(***)	34
(***)	---	(***)	---	(***)	(***)	(***)	(***)	2	(3)	(3)	2	(***)	2,052	(***)	(***)	35
1	---	95	---	28	0.29	(***)	(***)	---	---	---	---	(***)	---	(***)	(***)	36
60	3	5,864	2,505	1,634	0.28	(***)	(***)	1	(3)	1	(3)	(***)	1,632	(***)	(***)	37
(***)	(3)	(***)	180	(***)	(***)	(***)	(***)	(3)	(3)	12	1	(***)	60	(***)	(***)	38
35	58	5,670	11,223	1,237	0.22	(***)	(***)	14	(3)	12	1	(***)	9,075	(***)	(***)	39
(***)	118	(***)	116,323	(***)	(***)	(***)	(***)	8	(3)	(3)	---	(***)	40	(***)	(***)	40
(***)	1	(***)	136	(***)	(***)	(***)	(***)	6	5	(3)	3	(***)	5,110	(***)	(***)	41
(***)	38	(***)	16,752	(***)	(***)	(***)	(***)	6	1	1	4	(***)	4,045	(***)	(***)	42
(***)	728	(***)	212,554	(***)	(***)	(***)	(***)	41	12	(3)	29	(***)	31,567	(***)	(***)	43
(***)	---	(***)	---	(***)	(***)	(***)	(***)	5	---	(3)	5	(***)	6,818	(***)	(***)	44
(***)	(3)	(***)	80	(***)	(***)	(***)	(***)	4	2	---	2	(***)	2,291	(***)	(***)	45
(***)	1	(***)	120	(***)	(***)	(***)	(***)	36	18	(3)	18	(***)	20,940	(***)	(***)	46
(***)	169	(***)	113,159	(***)	(***)	(***)	(***)	5	2	(3)	3	(***)	6,576	(***)	(***)	47
(***)	24	(***)	5,100	(***)	(***)	(***)	(***)	17	4	1	12	(***)	21,752	(***)	(***)	48
(***)	1	(***)	725	(***)	(***)	(***)	(***)	617	95	(3)	522	(***)	472,970	(***)	(***)	49
(***)	6	(***)	1,262	(***)	(***)	(***)	(***)	11	(3)	(3)	11	(***)	8,175	(***)	(***)	50
(***)	(3)	(***)	523	(***)	(***)	(***)	(***)	242	93	---	147	(***)	158,600	(***)	(***)	51
(***)	1	(***)	335	(***)	(***)	(***)	(***)	101	30	(3)	71	(***)	83,098	(***)	(***)	52
(***)	---	(***)	---	(***)	(***)	(***)	(***)	3	1	1	1	(***)	1,381	(***)	(***)	53
(***)	---	(***)	---	(***)	(***)	(***)	(***)	185	48	15	32	(***)	33,826	(***)	10,109	54
(***)	---	(***)	---	(***)	(***)	(***)	(***)	3	---	---	---	(***)	---	(***)	(***)	55
(***)	---	(***)	---	(***)	(***)	(***)	(***)	(3)	(3)	---	(3)	(***)	2,120	(***)	(***)	56
(***)	---	(***)	---	(***)	(***)	(***)	(***)	4	3	---	1	(***)	14	(***)	(***)	57
(***)	---	(***)	---	(***)	(***)	(***)	(***)	14	7	---	6	(***)	2,868	(***)	(***)	58
(***)	---	(***)	---	(***)	(***)	(***)	(***)	(3)	(3)	---	---	(***)	10,868	(***)	(***)	59
(***)	---	(***)	---	(***)	(***)	(***)	(***)	---	---	---	---	(***)	15	(***)	(***)	60
(***)	23	(***)	42,093	(***)	(***)	1,852	829	1,026	185	678	163	1,265,351	1,596,469	257,100	0.20	61
(***)	(3)	(***)	557	(***)	(***)	2,535	3,932	4,341	836	1,892	1,613	6,815,861	8,521,480	1,337,391	0.20	62
(***)	15	(***)	2,460	(***)	(***)	---	---	1,753	559	233	991	(***)	4,057,599	(***)	(***)	63

FRUITS AND NUTS, AND HORTICULTURAL SPECIALTIES

551

Table 11.—PLUMS AND PRUNES—FARMS REPORTING AND NUMBER OF TREES, 1945, 1940, AND 1935; QUANTITY HARVESTED, 1944, 1939, AND 1934; AND VALUE, 1944 AND 1939; BY DIVISIONS AND STATES

REGION, DIVISION, AND STATE	FARMS REPORTING ¹			NUMBER OF TREES (ALL AGES)			QUANTITY HARVESTED (BUSHELS—FRESH FRUIT BASIS)			VALUE (DOLLARS)			
	1945	1940	1935	1945	1940	1935	1944 ²	1939	1934	1944	1939	Average per bushel	
												1944	1939
United States.....	624,488	697,062	921,900	22,715,927	24,759,156	30,376,324	19,525,441	25,646,331	23,296,579	46,908,570	19,280,549	2.40	0.75
The North.....	289,781	303,953	564,681	2,408,778	2,680,361	4,145,980	658,919	1,051,227	1,193,593	2,039,649	1,082,383	3.12	0.98
The South.....	239,046	299,764	258,159	1,767,379	2,664,247	2,279,294	569,590	900,397	685,230	1,179,193	768,768	2.07	0.85
The West.....	95,661	93,345	99,110	18,539,770	19,464,548	23,951,050	18,301,932	23,694,707	21,417,756	43,689,728	17,479,398	2.59	0.74
GEOGRAPHIC DIVISIONS:													
New England.....	8,246	6,344	19,542	85,227	83,237	84,739	15,719	12,644	11,321	46,655	17,702	2.97	1.40
Middle Atlantic.....	45,956	45,887	89,003	700,906	669,968	981,613	274,326	266,360	360,920	318,328	306,547	3.35	1.15
East North Central.....	119,099	123,189	250,667	899,428	976,964	1,625,804	291,458	439,149	582,194	900,702	401,045	3.09	0.98
West North Central.....	116,480	128,538	205,419	773,217	950,192	1,453,824	72,416	339,074	239,256	173,964	307,059	2.40	0.91
South Atlantic.....	82,999	91,629	98,983	423,203	519,756	510,544	194,796	218,531	174,762	367,105	199,930	1.99	0.91
East South Central.....	74,960	94,841	75,353	397,140	600,020	461,318	113,190	227,271	191,897	202,686	171,235	1.79	0.75
West South Central.....	81,037	113,294	88,878	947,036	1,544,471	1,307,432	261,604	454,595	318,571	589,402	397,603	2.25	0.87
Mountain.....	23,032	20,579	23,219	744,206	686,170	691,425	984,933	797,898	545,363	2,182,881	454,235	2.22	0.57
Pacific.....	72,579	72,766	75,691	17,795,564	18,778,378	23,259,625	17,316,999	22,896,809	20,872,373	41,505,847	17,025,163	2.40	0.74
NEW ENGLAND:													
Maine.....	2,862	1,658	3,465	10,202	7,479	14,215	5,042	3,451	514	14,624	4,838	2.90	1.40
New Hampshire.....	1,251	848	3,207	4,795	3,438	13,377	2,548	1,131	803	7,644	1,584	3.00	1.40
Vermont.....	599	864	2,914	4,594	6,642	15,986	975	3,496	262	2,925	4,894	3.00	1.40
Massachusetts.....	1,477	1,527	5,227	6,110	8,205	21,489	2,923	2,898	5,871	8,769	4,057	3.00	1.40
Rhode Island.....	199	89	497	802	396	2,475	301	186	781	903	189	3.00	1.39
Connecticut.....	1,858	1,368	4,232	8,724	7,077	17,197	3,930	1,582	3,090	11,790	2,145	3.00	1.40
MIDDLE ATLANTIC:													
New York.....	15,280	15,446	33,551	433,021	419,818	504,085	152,427	152,497	225,117	591,822	185,476	3.88	1.22
New Jersey.....	491	756	1,332	5,038	7,491	12,172	3,139	4,491	4,328	9,417	5,391	3.00	1.20
Pennsylvania.....	30,185	29,685	54,120	262,847	242,659	465,356	118,760	109,972	131,375	317,989	115,680	2.67	1.06
EAST NORTH CENTRAL:													
Ohio.....	26,924	33,419	70,356	197,433	267,334	499,541	81,572	137,280	170,310	211,048	140,724	2.59	1.03
Indiana.....	21,298	16,863	38,713	103,757	93,436	189,558	29,576	34,044	85,969	71,875	32,925	2.43	0.96
Illinois.....	24,226	26,857	53,769	116,043	141,951	286,320	20,861	46,634	67,799	44,296	37,960	2.12	0.81
Michigan.....	23,441	23,381	43,270	363,488	340,688	396,220	137,784	173,879	194,795	528,926	152,406	3.84	0.88
Wisconsin.....	23,210	22,669	44,559	118,707	133,555	254,165	21,665	41,312	63,321	44,657	37,230	2.06	0.90
WEST NORTH CENTRAL:													
Minnesota.....	20,582	22,073	39,587	159,028	205,955	313,143	18,533	78,482	40,076	42,647	68,254	2.30	0.88
Iowa.....	31,971	36,752	62,083	164,896	244,604	412,377	12,597	110,461	101,145	205,612	100,022	2.08	0.91
Missouri.....	43,969	49,786	60,156	275,983	329,210	383,138	24,779	101,695	65,323	64,798	91,529	2.62	0.90
North Dakota.....	1,232	928	2,885	33,292	19,185	47,955	3,478	4,466	1,431	9,155	6,096	2.63	1.36
South Dakota.....	2,432	2,039	4,961	31,060	53,748	85,748	4,021	7,542	2,605	7,990	8,077	1.99	1.07
Nebraska.....	7,771	6,828	17,755	53,535	52,307	130,783	17,188	15,648	15,648	15,989	15,891	2.39	0.92
Kansas.....	8,523	10,127	17,992	49,423	70,948	112,780	2,326	19,240	13,029	7,773	16,620	3.34	0.86
SOUTH ATLANTIC:													
Delaware.....	107	102	188	266	439	1,391	49	181	50	147	199	3.00	1.10
Maryland.....	1,802	2,168	4,001	9,096	12,920	16,811	4,949	3,762	3,729	13,305	4,136	2.69	1.10
District of Columbia.....	2	8	12	47	12	47	1	1	7	1	1	1.00	
Virginia.....	16,825	16,919	21,718	62,027	73,756	87,475	41,137	30,045	24,270	82,195	25,410	2.00	0.85
West Virginia.....	20,023	17,715	20,744	116,848	120,363	149,101	44,662	81,157	15,991	94,934	33,938	2.13	1.09
North Carolina.....	21,110	25,540	25,519	77,418	101,170	110,764	44,222	55,112	60,232	85,444	44,096	2.00	0.80
South Carolina.....	5,374	8,063	7,630	24,174	40,728	35,524	10,245	25,110	23,107	20,490	20,086	2.00	0.80
Georgia.....	11,647	14,496	10,909	80,048	108,975	75,361	31,475	57,269	37,415	60,496	56,840	1.92	0.99
Florida.....	6,111	6,624	3,216	53,324	61,393	36,070	18,057	15,894	9,361	27,094	15,224	1.50	0.96
EAST SOUTH CENTRAL:													
Kentucky.....	24,900	32,059	29,303	132,044	181,723	164,290	46,293	47,071	34,379	94,734	31,749	2.05	0.67
Tennessee.....	27,989	34,843	26,205	147,088	200,610	151,072	24,118	72,007	78,255	47,157	52,789	1.95	0.73
Alabama.....	14,210	16,978	13,035	72,755	122,973	89,100	23,186	64,645	48,589	29,233	50,769	1.26	0.79
Mississippi.....	7,861	10,961	6,810	45,253	94,714	56,856	19,593	43,548	30,674	31,512	35,928	1.61	0.83
WEST SOUTH CENTRAL:													
Arkansas.....	13,694	24,761	16,426	140,653	287,639	162,586	35,215	93,647	69,317	72,072	78,606	2.05	0.84
Louisiana.....	6,318	9,613	7,429	60,558	114,941	92,597	15,525	38,101	25,451	34,154	40,720	2.20	1.07
Oklahoma.....	21,416	22,957	18,545	192,962	252,535	190,490	43,012	67,588	53,644	126,487	62,940	2.94	0.93
Texas.....	39,659	55,963	46,473	552,863	889,356	861,759	167,852	255,259	170,159	356,689	215,337	2.13	0.84
MOUNTAIN:													
Montana.....	1,377	1,160	2,095	14,114	13,212	23,957	9,297	4,823	10,235	32,549	7,233	3.50	1.50
Idaho.....	5,149	5,509	6,122	485,984	468,697	455,019	823,179	697,684	445,715	1,720,608	333,110	2.09	0.43
Wyoming.....	889	596	1,162	10,959	9,799	16,833	3,813	2,808	4,540	12,669	3,231	3.32	1.40
Colorado.....	3,873	3,588	3,848	72,439	63,806	54,236	52,318	28,886	27,707	139,055	42,048	2.66	1.46
New Mexico.....	5,728	5,291	4,277	63,822	56,620	50,904	46,859	28,885	24,576	127,472	37,329	2.72	1.29
Arizona.....	1,783	1,230	1,577	17,023	9,145	31,773	5,821	5,536	5,682	21,679	7,222	3.72	1.30
Utah.....	3,670	2,584	3,503	76,119	60,582	54,454	41,039	23,024	24,704	121,208	22,100	2.95	0.79
Nevada.....	614	621	635	3,746	4,319	4,249	2,547	1,752	2,224	7,641	1,962	3.00	1.12
PACIFIC:													
Washington.....	28,106	28,941	31,008	802,367	986,883	1,214,929	828,107	821,072	1,520,066	1,634,574	311,866	1.97	0.38
Oregon.....	20,078	22,001	24,678	3,099,191	3,684,104	4,835,211	1,739,321	3,243,201	3,384,548	3,821,423	1,051,723	2.20	0.32
California.....	24,395	21,824	20,210	13,894,006	14,107,391	17,209,485	14,749,571	18,832,536	15,417,759	36,050,850	15,661,572	2.44	0.83

¹Farms reporting trees on census date and/or production for previous crop year.

CENSUS OF AGRICULTURE: 1945

Table 12.—APRICOTS—FARMS REPORTING AND NUMBER OF TREES, 1945 AND 1940; AND QUANTITY HARVESTED AND VALUE, 1944 AND 1939; BY DIVISIONS AND STATES

DIVISION AND STATE	FARMS REPORTING ¹		NUMBER OF TREES (ALL AGES)		QUANTITY HARVESTED (BUSHELS)		VALUE (DOLLARS)			
	1945	1940	1945	1940	1944	1939	1944	1939	Average per bushel	
									1944	1939
United States.....	(***)	105,455	(***)	6,368,357	(***)	11,548,466	(***)	9,373,673	(***)	0.81
Specified States.....	60,584	52,315	5,641,625	6,160,124	12,798,804	11,486,969	33,262,801	9,297,782	2.60	0.81
GEOGRAPHIC DIVISIONS:										
New England.....	(***)	74	(***)	216	(***)	18	(***)	22	(***)	1.22
Middle Atlantic.....	(***)	1,757	(***)	5,325	(***)	1,597	(***)	2,097	(***)	1.31
East North Central.....	(***)	8,558	(***)	28,689	(***)	12,985	(***)	14,814	(***)	1.14
West North Central.....	11,107	17,785	62,183	76,043	602	23,426	1,882	27,275	3.13	1.16
South Atlantic.....	(***)	1,443	(***)	3,859	(***)	929	(***)	1,206	(***)	1.30
East South Central.....	(***)	3,739	(***)	10,016	(***)	3,822	(***)	4,567	(***)	1.19
West South Central.....	(***)	27,788	(***)	120,235	(***)	17,041	(***)	24,541	(***)	1.44
Mountain.....	14,654	15,575	332,520	302,314	375,268	329,158	1,108,142	246,677	2.95	0.75
Pacific.....	34,823	38,736	5,246,922	5,821,660	12,422,934	11,158,490	32,152,777	9,052,674	2.59	0.81
NEW ENGLAND:										
Maine.....	(***)	10	(***)	43	(***)	5	(***)	6	(***)	1.20
New Hampshire.....	(***)	4	(***)	13	(***)	—	(***)	—	(***)	—
Vermont.....	(***)	4	(***)	19	(***)	12	(***)	15	(***)	1.25
Massachusetts.....	(***)	28	(***)	59	(***)	1	(***)	1	(***)	1.00
Rhode Island.....	(***)	1	(***)	1	(***)	—	(***)	—	(***)	—
Connecticut.....	(***)	27	(***)	61	(***)	—	(***)	—	(***)	—
MIDDLE ATLANTIC:										
New York.....	(***)	234	(***)	1,090	(***)	211	(***)	253	(***)	1.20
New Jersey.....	(***)	30	(***)	113	(***)	7	(***)	8	(***)	1.14
Pennsylvania.....	(***)	1,493	(***)	4,122	(***)	1,379	(***)	1,836	(***)	1.33
EAST NORTH CENTRAL:										
Ohio.....	(***)	769	(***)	2,034	(***)	485	(***)	560	(***)	1.15
Indiana.....	(***)	1,887	(***)	6,617	(***)	3,081	(***)	4,146	(***)	1.35
Illinois.....	(***)	4,961	(***)	16,511	(***)	8,128	(***)	8,128	(***)	1.00
Michigan.....	(***)	876	(***)	3,313	(***)	1,194	(***)	1,859	(***)	1.56
Wisconsin.....	(***)	65	(***)	214	(***)	97	(***)	121	(***)	1.25
WEST NORTH CENTRAL:										
Minnesota.....	(***)	58	(***)	437	(***)	1	(***)	1	(***)	1.20
Iowa.....	(***)	2,486	(***)	11,352	(***)	6,323	(***)	7,587	(***)	1.10
Missouri.....	(***)	3,537	(***)	11,204	(***)	3,662	(***)	4,368	(***)	1.19
North Dakota.....	37	8	190	26	—	—	—	—	—	—
South Dakota.....	96	44	341	352	111	115	333	137	3.00	1.19
Nebraska.....	4,803	3,758	30,741	19,977	227	7,050	681	8,285	3.00	1.18
Kansas.....	6,171	7,894	30,911	32,795	264	6,275	868	6,897	3.29	1.10
SOUTH ATLANTIC:										
Delaware.....	(***)	5	(***)	19	(***)	1	(***)	1	(***)	1.00
Maryland.....	(***)	119	(***)	468	(***)	55	(***)	69	(***)	1.25
District of Columbia.....	(***)	—	(***)	—	(***)	—	(***)	—	(***)	—
Virginia.....	(***)	286	(***)	736	(***)	232	(***)	354	(***)	1.53
West Virginia.....	(***)	119	(***)	301	(***)	13	(***)	15	(***)	1.15
North Carolina.....	(***)	440	(***)	898	(***)	313	(***)	406	(***)	1.30
South Carolina.....	(***)	117	(***)	354	(***)	95	(***)	112	(***)	1.18
Georgia.....	(***)	324	(***)	902	(***)	211	(***)	239	(***)	1.13
Florida.....	(***)	33	(***)	181	(***)	9	(***)	10	(***)	1.11
EAST SOUTH CENTRAL:										
Kentucky.....	(***)	609	(***)	1,356	(***)	236	(***)	257	(***)	1.09
Tennessee.....	(***)	1,277	(***)	2,914	(***)	818	(***)	1,014	(***)	1.24
Alabama.....	(***)	893	(***)	2,366	(***)	1,017	(***)	1,209	(***)	1.19
Mississippi.....	(***)	960	(***)	3,380	(***)	1,751	(***)	2,087	(***)	1.19
WEST SOUTH CENTRAL:										
Arkansas.....	(***)	2,426	(***)	6,380	(***)	1,692	(***)	1,834	(***)	1.08
Louisiana.....	(***)	998	(***)	2,399	(***)	665	(***)	796	(***)	1.20
Oklahoma.....	(***)	10,132	(***)	43,542	(***)	3,112	(***)	3,884	(***)	1.25
Texas.....	(***)	14,532	(***)	67,914	(***)	11,572	(***)	18,027	(***)	1.56
MOUNTAIN:										
Montana.....	132	191	433	849	267	118	801	118	3.00	1.00
Idaho.....	3,761	3,925	42,046	46,861	36,492	39,377	80,055	37,798	2.19	0.96
Wyoming.....	74	13	871	137	32	—	96	—	3.00	—
Colorado.....	3,280	2,588	79,234	53,566	131,682	74,378	428,035	71,554	3.25	0.96
New Mexico.....	(***)	3,700	(***)	16,900	(***)	15,219	(***)	16,888	(***)	1.11
Arizona.....	2,163	1,479	30,160	12,934	17,750	16,167	74,550	23,700	4.20	1.47
Utah.....	4,866	3,538	178,061	164,550	187,362	179,918	519,433	91,740	2.77	0.51
Nevada.....	378	341	1,715	4,517	1,683	3,981	5,172	4,879	3.07	1.23
PACIFIC:										
Washington.....	7,173	5,841	438,029	369,253	783,575	544,201	2,371,806	391,756	3.03	0.72
Oregon.....	3,924	3,482	71,896	59,507	101,484	64,456	317,734	49,164	3.13	0.76
California.....	23,726	19,415	4,737,197	5,392,900	11,537,875	10,550,833	29,463,737	8,611,754	2.55	0.82

**Not available; separate inquiry not carried on schedule for all States. See text.

¹Farms reporting trees on census date and/or production for previous crop year.

FRUITS AND NUTS, AND HORTICULTURAL SPECIALTIES 553

Table 13.—GRAPES—FARMS REPORTING AND NUMBER OF VINES, 1945, 1940, AND 1935; QUANTITY HARVESTED, 1944, 1939, AND 1934; AND VALUE, 1944 AND 1939; BY DIVISIONS AND STATES

REGION, DIVISION, AND STATE	FARMS REPORTING ¹			NUMBER OF VINES (ALL AGES)			QUANTITY HARVESTED (POUNDS)			VALUE (DOLLARS)			
	1945	1940	1935	1945	1940	1935	1944	1939	1934	1944	1939	Average per pound	
												1944	1939
United States.....	880,186	762,084	1,114,233	299,180,682	291,856,517	341,045,210	5,240,033,691	4,409,453,142	5,730,285,954	211,551,237	57,789,726	0.040	0.009
The North.....	403,163	331,098	634,887	54,399,758	58,922,757	86,152,568	253,138,819	314,458,100	412,307,646	12,193,018	5,469,057	0.048	0.017
The South.....	418,213	378,487	422,188	7,660,824	10,303,293	12,901,799	56,031,314	57,398,541	81,694,862	3,291,580	1,609,082	0.059	0.028
The West.....	58,760	52,499	57,158	237,120,120	222,630,267	241,990,843	4,930,863,558	4,037,596,501	5,235,983,446	196,066,639	30,711,587	0.040	0.008
GEOGRAPHIC DIVISIONS:													
New England.....	12,409	7,819	23,890	235,352	378,013	960,405	1,881,705	1,586,918	6,470,461	131,374	35,555	0.070	0.022
Middle Atlantic.....	74,034	67,315	114,561	30,731,265	31,406,872	41,526,501	137,987,119	148,499,837	165,452,954	6,734,080	2,709,047	0.049	0.018
East North Central.....	177,016	146,481	300,572	19,294,675	22,014,083	33,991,331	95,584,170	134,660,081	205,212,864	4,518,709	2,113,819	0.047	0.016
West North Central.....	139,704	109,483	195,964	4,138,446	5,125,789	9,674,331	17,685,925	29,711,264	35,471,367	808,855	610,636	0.046	0.021
South Atlantic.....	225,430	182,426	219,804	2,024,797	2,180,992	3,143,617	27,755,743	25,761,137	36,745,110	1,861,352	836,212	0.067	0.032
East South Central.....	149,765	135,872	139,533	1,068,607	1,536,693	1,568,507	10,345,622	9,693,709	13,357,949	630,765	334,922	0.061	0.035
West South Central.....	45,013	60,089	62,651	4,572,420	6,795,408	6,189,873	17,931,949	21,942,695	31,591,803	799,445	437,948	0.045	0.020
Mountain.....	10,150	8,821	9,897	937,753	1,050,953	1,648,348	10,746,566	6,123,490	8,042,582	716,297	126,325	0.067	0.021
Pacific.....	48,610	43,678	47,261	236,162,367	221,599,314	240,542,495	4,320,116,992	4,051,473,011	5,227,940,864	195,350,372	30,583,262	0.040	0.008
NEW ENGLAND:													
Maine.....	1,801	735	1,510	6,717	3,136	7,011	69,220	30,276	42,880	4,500	755	0.065	0.025
New Hampshire.....	2,210	896	3,562	10,730	7,470	19,103	152,036	56,260	181,423	10,642	1,407	0.070	0.025
Vermont.....	564	763	2,030	3,251	5,520	12,734	27,989	60,650	28,370	1,959	1,820	0.070	0.030
Massachusetts.....	3,514	2,892	7,583	65,745	64,197	139,143	560,457	456,341	1,301,066	39,232	11,480	0.070	0.025
Rhode Island.....	615	256	1,218	19,626	101,752	70,566	169,864	99,473	522,251	11,891	2,486	0.070	0.025
Connecticut.....	3,705	2,277	8,187	129,283	195,938	711,848	902,139	883,918	4,394,451	63,150	17,679	0.070	0.020
MIDDLE ATLANTIC:													
New York.....	18,644	16,823	28,008	24,416,596	25,421,129	32,316,698	97,734,223	113,680,299	121,575,850	4,792,209	2,034,407	0.049	0.018
New Jersey.....	2,069	2,194	4,533	738,987	662,615	1,574,965	4,471,238	2,740,857	5,451,997	231,660	54,817	0.052	0.020
Pennsylvania.....	53,321	48,298	82,020	5,575,682	5,323,128	7,654,838	35,781,658	32,078,681	38,425,107	1,710,211	619,823	0.048	0.019
EAST NORTH CENTRAL:													
Ohio.....	44,828	47,341	96,150	7,272,293	8,482,519	11,824,973	32,996,038	48,370,496	52,562,376	1,446,011	715,637	0.044	0.015
Indiana.....	39,854	25,150	62,466	665,827	774,877	1,469,976	4,632,089	5,404,042	10,792,359	190,520	105,343	0.041	0.019
Illinois.....	46,447	36,554	81,127	851,564	1,081,361	2,169,560	5,679,547	8,441,288	13,431,331	263,034	154,913	0.046	0.018
Michigan.....	28,974	25,026	45,038	10,355,496	11,537,641	18,320,731	50,997,055	71,398,565	127,762,784	2,527,064	1,105,462	0.050	0.015
Wisconsin.....	16,913	10,410	15,791	149,495	137,685	206,191	1,289,461	1,045,690	664,014	92,080	32,464	0.071	0.031
WEST NORTH CENTRAL:													
Minnesota.....	6,901	5,749	9,652	56,542	66,830	125,496	277,052	423,224	291,292	25,789	11,776	0.093	0.028
Iowa.....	48,722	33,767	62,301	812,742	866,320	1,964,546	5,157,804	5,887,484	7,983,202	235,875	139,880	0.046	0.024
Missouri.....	61,539	55,419	82,062	1,994,655	2,737,881	4,534,317	7,832,729	15,469,354	18,313,474	324,872	299,948	0.041	0.019
North Dakota.....	82	80	215	2,046	1,971	6,037	6,107	3,390	1,851	467	136	0.076	0.040
South Dakota.....	535	299	1,021	4,880	4,206	15,376	23,262	14,311	10,709	1,855	571	0.080	0.040
Nebraska.....	7,278	4,014	15,316	400,378	489,821	1,068,973	1,104,932	2,766,470	3,498,996	60,977	55,398	0.055	0.020
Kansas.....	14,647	10,155	25,299	867,203	956,760	1,959,586	3,283,939	5,147,051	5,371,843	159,020	102,937	0.048	0.020
SOUTH ATLANTIC:													
Delaware.....	720	478	733	179,885	393,961	797,510	1,416,901	2,463,385	4,026,123	70,845	49,267	0.050	0.020
Maryland.....	6,095	4,715	8,644	58,448	80,308	211,865	622,575	588,572	1,348,470	28,235	14,713	0.045	0.025
District of Columbia.....	1	11	9	100	2,506	1,951	10,000	7,798	10,120	450	234	0.045	0.030
Virginia.....	47,061	32,329	50,104	310,321	305,949	498,854	5,117,460	3,334,950	5,338,744	283,441	107,658	0.055	0.032
West Virginia.....	38,975	24,202	30,724	244,547	201,873	265,245	4,156,206	2,489,722	3,565,801	181,420	70,262	0.046	0.028
North Carolina.....	75,313	69,347	76,692	546,465	529,185	555,624	10,591,977	10,837,960	14,650,957	785,365	390,517	0.076	0.036
South Carolina.....	15,484	15,618	16,597	143,732	148,356	173,791	1,981,057	2,408,914	3,072,095	153,541	84,215	0.078	0.035
Georgia.....	54,798	26,531	28,493	435,005	327,369	221,716	3,568,795	2,796,548	3,225,447	294,490	94,247	0.085	0.034
Florida.....	6,963	7,195	5,818	104,294	203,685	427,061	486,774	853,288	1,714,353	53,545	24,999	0.110	0.030
EAST SOUTH CENTRAL:													
Kentucky.....	44,584	44,062	48,918	313,812	485,284	654,299	3,137,088	3,205,776	4,873,940	152,745	114,371	0.049	0.036
Tennessee.....	56,020	52,183	48,973	422,270	527,253	516,239	3,972,375	3,929,720	4,656,941	254,931	136,386	0.064	0.035
Alabama.....	38,973	30,349	31,948	277,512	259,982	321,822	2,813,568	2,169,883	3,185,780	189,158	70,922	0.067	0.033
Mississippi.....	10,388	9,378	9,694	50,013	64,374	75,947	422,591	388,330	643,288	33,949	13,243	0.080	0.034
WEST SOUTH CENTRAL:													
Arkansas.....	15,529	22,796	21,312	3,167,341	4,551,449	5,045,161	13,170,371	13,758,256	20,287,683	571,425	251,148	0.043	0.018
Louisiana.....	1,372	2,293	2,523	8,449	20,424	34,634	22,082	60,348	106,289	1,838	1,689	0.083	0.028
Oklahoma.....	13,177	14,239	17,102	868,350	1,224,596	1,934,520	2,438,734	4,170,891	6,545,873	111,546	90,152	0.046	0.022
Texas.....	12,940	20,761	21,914	528,280	988,939	1,175,560	2,300,762	3,954,200	4,651,958	114,636	94,959	0.050	0.024
MOUNTAIN:													
Montana.....	173	204	207	1,740	3,427	4,011	9,912	8,234	18,535	607	414	0.061	0.050
Idaho.....	1,766	1,937	1,705	53,489	88,610	109,349	594,903	926,020	1,160,876	24,793	16,918	0.042	0.018
Wyoming.....	163	85	210	2,965	2,297	1,550	9,370	4,284	6,296	561	131	0.060	0.031
Colorado.....	1,982	1,595	1,769	144,264	129,488	163,854	1,152,752	639,631	1,183,658	65,077	15,552	0.056	0.024
New Mexico.....	2,942	2,859	3,066	377,646	398,283	715,859	2,869,705	1,693,705	2,390,611	147,428	35,434	0.051	0.021
Arizona.....	1,449	922	1,329	137,225	122,880	186,336	4,000,000	1,076,000	1,205,912	358,850	26,257	0.090	0.024
Utah.....	1,446	980	1,429	222,285	263,761	395,115	2,032,250	1,494,553	1,872,689	114,309	25,647	0.056	0.017
Nevada.....	289	239	182	18,139	32,207	72,294	77,674	281,560	204,005	4,662	5,972	0.060	0.021
PACIFIC:													
Washington.....	9,859	7,931	7,115	2,536,226	1,496,941	1,034,209	28,740,045	12,579,840	9,005,826	856,131	170,441	0.030	0.014
Oregon.....	12,558	10,962	11,818										

CENSUS OF AGRICULTURE: 1945

Table 14.—PECANS (IMPROVED AND SEEDLING)—FARMS REPORTING AND NUMBER OF TREES, 1945, 1940, AND 1930; QUANTITY HARVESTED, 1944, 1939, AND 1929; AND VALUE, 1944 AND 1939; BY DIVISIONS AND STATES

DIVISION AND STATE	FARMS REPORTING ¹			NUMBER OF TREES (ALL AGES)			QUANTITY HARVESTED (POUNDS)			VALUE (DOLLARS)			
	1945	1940	1930	1945	1940	1930	1944	1939	1929	1944	1939	Average per pound	
												1944	1939
United States.....	(***)	278,146	195,710	(***)	10,961,191	9,147,075	(***)	72,838,364	26,150,546	(***)	7,416,591	(***)	0.10
Specified States.....	318,075	277,380	195,266	10,423,093	10,954,437	9,127,567	98,179,988	72,773,976	26,128,866	21,553,220	7,400,857	0.22	0.10
GEOGRAPHIC DIVISIONS:													
New England.....		5				13							
Middle Atlantic.....	3	239	320	27	878	1,944		2,193	2,118		319		0.15
East North Central.....	2,525	2,780	2,120	51,678	80,451	32,951	150,845	460,627	87,604	32,552	43,749	0.21	0.09
West North Central.....	2,186	4,035	5,714	77,212	182,124	186,790	109,066	913,995	416,139	23,993	76,474	0.22	0.08
South Atlantic.....	130,399	107,703	77,945	3,302,266	2,930,471	3,144,614	33,877,779	27,611,050	5,585,281	8,749,432	3,076,985	0.26	0.11
East South Central.....	91,184	69,136	47,992	1,540,568	1,395,217	1,553,062	18,252,050	15,263,429	3,046,820	4,354,672	1,566,456	0.24	0.10
West South Central.....	92,063	92,621	62,532	5,345,018	6,209,132	4,366,690	45,493,285	28,050,878	16,858,586	8,284,034	2,560,326	0.18	0.09
Mountain.....	315	861	643	206,224	138,171	41,536	316,863	471,804	31,818	108,737	76,548	0.34	0.16
Pacific.....	(***)	766	444	(***)	26,754	19,508	(***)	64,358	22,180	(***)	15,534	(***)	0.24
NEW ENGLAND:													
Maine.....													
New Hampshire.....													
Vermont.....		1				2							
Massachusetts.....													
Rhode Island.....		3				9							
Connecticut.....		1				2							
MIDDLE ATLANTIC:													
New York.....	3	17	92	27	78	715		416	1,387		62		0.15
New Jersey.....		19	50		59	433		37	410		6		0.16
Pennsylvania.....		203	176		741	796		1,740	321		251		0.14
EAST NORTH CENTRAL:													
Ohio.....		69	187		4,425	1,834		399	1,310		44		0.11
Indiana.....	963	488	454	4,211	5,543	5,652	2,527	37,871	11,166	634	3,255	0.25	0.14
Illinois.....	1,962	2,239	1,499	47,467	70,382	25,465	146,518	422,399	75,128	31,718	38,439	0.51	0.09
Michigan.....		12			77			23			5		0.22
Wisconsin.....		3			4			36			6		0.17
WEST NORTH CENTRAL:													
Iowa.....		40	210		788	3,631		708	10,348		71		0.10
Missouri.....	2,186	2,826	2,454	77,212	109,145	96,589	109,066	756,651	350,354	23,993	62,955	0.22	0.08
North Dakota.....	(***)			(***)			(***)			(***)		(***)	
South Dakota.....	(***)			(***)			(***)			(***)		(***)	
Nebraska.....	(***)	11	31		30	358		52	63		7		0.13
Kansas.....	(***)	1,158	1,019	(***)	72,161	84,412	(***)	158,589	155,374	(***)	15,441	(***)	0.09
SOUTH ATLANTIC:													
Delaware.....	15	30	23	242	473	72	3,224	640	5	1,129	116	0.35	0.18
Maryland.....	117	100	171	990	560	1,159	3,316	1,807	1,343	1,062	250	0.32	0.14
District of Columbia.....	1	1	1	7	7	2							
Virginia.....	2,734	1,663	1,789	12,889	9,015	13,250	137,705	49,900	27,922	44,066	8,180	0.32	0.16
West Virginia.....	7	27	69	24	76	249		58	404		6		0.10
North Carolina.....	29,901	26,765	18,063	173,694	165,043	140,132	1,996,617	1,379,283	407,827	622,561	203,562	0.31	0.15
South Carolina.....	19,650	15,688	13,573	227,027	207,017	218,724	1,965,964	2,203,432	515,903	556,512	300,391	0.29	0.14
Florida.....	62,353	48,247	33,362	2,562,980	2,191,668	2,287,467	25,559,869	20,750,782	3,809,177	6,525,198	2,285,954	0.26	0.11
Georgia.....	16,622	15,202	10,894	324,540	356,712	483,559	4,441,284	3,225,148	825,000	998,904	278,526	0.22	0.09
EAST SOUTH CENTRAL:													
Kentucky.....	683	924	766	10,477	12,489	10,904	17,654	96,484	33,015	4,067	9,834	0.23	0.10
Tennessee.....	4,270	4,308	2,667	24,354	33,462	17,245	116,100	290,985	41,761	32,438	31,691	0.28	0.11
Alabama.....	55,953	57,342	26,121	971,480	784,873	742,757	10,954,408	9,264,106	1,543,616	2,787,163	961,863	0.25	0.10
Mississippi.....	32,278	26,562	18,438	554,257	562,373	582,256	7,161,888	5,611,854	1,428,428	1,350,954	563,068	0.21	0.10
WEST SOUTH CENTRAL:													
Arkansas.....	8,818	9,095	5,387	122,193	207,551	114,451	1,398,029	1,547,254	248,084	322,260	169,240	0.23	0.11
Louisiana.....	22,168	18,857	13,253	473,235	604,629	661,816	7,854,540	4,389,557	1,305,148	1,544,537	458,571	0.20	0.10
Oklahoma.....	17,046	19,185	11,908	1,536,959	1,661,696	1,010,854	7,954,252	12,007,662	5,718,978	1,005,704	977,350	0.16	0.08
Texas.....	44,051	45,464	32,284	3,212,633	3,715,256	2,879,569	28,508,684	10,108,405	9,688,376	5,111,503	955,185	0.18	0.09
MOUNTAIN:													
Montana.....	(***)	4		(***)	9		(***)			(***)		(***)	
Idaho.....	(***)	1	11	(***)	1	53			55			(***)	
Wyoming.....	(***)			(***)			(***)			(***)		(***)	
Colorado.....	(***)	7		(***)	15		(***)			(***)		(***)	
New Mexico.....	315	355	215	108,324	86,146	3,543	316,863	21,936	3,356	108,737	5,157	0.34	0.24
Arizona.....	(***)	428	410	(***)	50,831	37,288	(***)	445,442	28,192	(***)	70,384	(***)	0.16
Utah.....	(***)	51		(***)	882		(***)	1,976		(***)	395	(***)	0.20
Nevada.....	(***)	17	7	(***)	287	652	(***)	2,450	215	(***)	612	(***)	0.25
PACIFIC:													
Washington.....	(***)	29		(***)	60		(***)	201		(***)	50	(***)	0.25
Oregon.....	(***)	32	55	(***)	240	508	(***)	115	250	(***)	28	(***)	0.24
California.....	(***)	705	389	(***)	28,454	19,002	(***)	64,042	21,930	(***)	15,456	(***)	0.24

**Not available; separate inquiry not carried on schedule for all States. See text.

¹Farms reporting trees on census date and/or production for previous crop year.

FRUITS AND NUTS, AND HORTICULTURAL SPECIALTIES

Table 15.—ALMONDS, FILBERTS, AND WALNUTS (ENGLISH OR PERSIAN)—FARMS REPORTING AND NUMBER OF TREES, 1945, 1940, AND 1930;
QUANTITY HARVESTED, 1944, 1939, AND 1929; AND VALUE, 1944 AND 1939; BY STATES

CROP AND STATE	FARMS REPORTING ¹			NUMBER OF TREES (ALL AGES)			QUANTITY HARVESTED (POUNDS)			VALUE (DOLLARS)			Average per pound		
	1945	1940	1930	1945	1940	1930	1944	1939	1929	1944	1939	1944	1939	1944	1939
															1944
ALMONDS															
United States.....	(***)	11,551	9,216	(***)	5,470,878	4,410,240	(***)	47,910,710	9,403,155	(***)	4,920,696	(***)		(***)	0.10
Specified States.....	12,698	10,424	8,683	6,688,587	5,463,652	4,408,180	54,184,000	47,878,000	9,394,781	20,806,880	4,915,619	0.38	0.10		
Arizona.....	107	97	138	449	416	482	2,000	2,000	4,829	700	476	0.35	0.24		
California.....	12,591	10,327	8,545	6,668,138	5,463,236	4,405,698	54,182,000	47,876,000	9,389,952	20,806,180	4,915,143	0.38	0.10		
Oregon.....	(***)	723	400	(***)	3,437	2,293	(***)	19,720	3,516	(***)	2,761	(***)	0.14		
Washington.....	(***)	161	23	(***)	2,420	100	(***)	5,536	25	(***)	831	(***)	0.15		
All other States.....	(***)	243	110	(***)	1,169	1,667	(***)	7,454	4,833	(***)	1,485	(***)	0.20		
FILBERTS²															
United States.....	(***)	11,874	4,678	(***)	1,416,117	579,124	(***)	6,217,116	412,118	(***)	701,142	(***)		(***)	0.11
Specified States.....	16,214	11,713	4,589	2,149,247	1,409,812	567,488	11,413,856	6,209,667	405,592	5,118,140	700,006	0.27	0.11		
California.....	(***)	101	63	(***)	5,559	6,410	(***)	6,924	1,490	(***)	1,039	(***)	0.15		
Idaho.....	61	50	2	706	928	4	3,724	2,283	10	1,042	252	0.28	0.11		
Oregon.....	10,790	7,855	3,805	1,843,770	1,160,030	480,403	9,597,811	5,364,108	358,257	2,591,527	590,052	0.27	0.11		
Washington.....	5,833	3,808	782	304,771	248,854	87,079	1,812,521	843,276	47,325	525,571	109,702	0.29	0.13		
All other States.....	(***)	60	26	(***)	946	5,228	(***)	525	5,036	(***)	97	(***)	0.18		
WALNUTS (ENGLISH OR PERSIAN)															
United States.....	(***)	44,231	51,678	(***)	3,394,832	3,520,841	(***)	128,453,713	78,159,951	(***)	10,628,516	(***)		(***)	0.08
Specified States.....	47,385	40,490	29,920	3,667,522	3,380,028	3,508,700	120,510,951	128,328,800	78,106,512	27,475,692	10,610,002	0.23	0.08		
Alabama.....	(***)	359	200	(***)	698	461	(***)	13,062	4,202	(***)	1,961	(***)	0.15		
Arizona.....	87	88	31	314	562	965	4,000	4,000	3,187	1,000	454	0.25	0.11		
Arkansas.....	(***)	67	45	(***)	142	108	(***)	1,167	657	(***)	174	(***)	0.15		
California.....	25,574	21,080	16,900	3,072,328	2,782,190	2,969,939	109,038,000	118,344,000	75,479,129	24,934,435	9,750,438	0.23	0.08		
Colorado.....	(***)	7	4	(***)	29	593	(***)	722	155	(***)	108	(***)	0.15		
Connecticut.....	(***)	9	—	(***)	31	—	(***)	66	—	(***)	10	(***)	0.15		
Delaware.....	(***)	41	49	(***)	188	650	(***)	591	770	(***)	88	(***)	0.15		
Florida.....	(***)	59	135	(***)	149	300	(***)	936	6,163	(***)	135	(***)	0.14		
Georgia.....	(***)	198	112	(***)	713	244	(***)	14,167	1,690	(***)	2,128	(***)	0.15		
Idaho.....	324	182	28	2,152	798	343	15,458	10,775	793	4,307	1,077	0.32	0.10		
Illinois.....	(***)	51	7	(***)	276	97	(***)	701	150	(***)	105	(***)	0.15		
Indiana.....	(***)	18	6	(***)	40	9	(***)	17	—	(***)	3	(***)	0.18		
Iowa.....	(***)	29	—	(***)	149	—	(***)	215	—	(***)	33	(***)	0.15		
Kansas.....	(***)	8	—	(***)	122	—	(***)	20	—	(***)	3	(***)	0.15		
Kentucky.....	(***)	23	11	(***)	44	115	(***)	496	22	(***)	76	(***)	0.15		
Louisiana.....	(***)	24	52	(***)	55	130	(***)	965	506	(***)	144	(***)	0.15		
Maryland.....	(***)	218	198	(***)	628	1,000	(***)	5,222	5,663	(***)	784	(***)	0.15		
Massachusetts.....	(***)	10	13	(***)	34	37	(***)	907	133	(***)	136	(***)	0.15		
Michigan.....	(***)	52	—	(***)	588	—	(***)	4,886	—	(***)	752	(***)	0.15		
Minnesota.....	(***)	18	—	(***)	108	—	(***)	722	—	(***)	108	(***)	0.15		
Mississippi.....	(***)	68	64	(***)	154	152	(***)	3,905	1,363	(***)	590	(***)	0.15		
Missouri.....	(***)	34	12	(***)	366	28	(***)	494	140	(***)	74	(***)	0.15		
Montana.....	(***)	10	—	(***)	40	—	(***)	100	—	(***)	15	(***)	0.15		
Nebraska.....	(***)	3	—	(***)	3	—	(***)	—	—	(***)	—	(***)	0.15		
Nevada.....	(***)	27	—	(***)	87	—	(***)	1,156	—	(***)	113	(***)	0.10		
New Jersey.....	(***)	28	59	(***)	129	825	(***)	303	2,123	(***)	45	(***)	0.15		
New Mexico.....	(***)	33	21	(***)	260	395	(***)	1,306	5,771	(***)	198	(***)	0.15		
New York.....	(***)	142	136	(***)	1,165	2,446	(***)	6,318	5,851	(***)	948	(***)	0.15		
North Carolina.....	(***)	428	120	(***)	1,055	504	(***)	21,178	2,786	(***)	3,176	(***)	0.15		
Ohio.....	(***)	71	16	(***)	431	80	(***)	1,453	280	(***)	216	(***)	0.15		
Oklahoma.....	(***)	25	7	(***)	127	78	(***)	338	290	(***)	51	(***)	0.15		
Oregon.....	16,139	14,624	11,395	557,413	557,413	507,612	11,191,865	9,546,818	2,484,004	2,462,711	811,479	0.22	0.08		
Pennsylvania.....	(***)	864	242	(***)	3,688	2,609	(***)	29,006	6,495	(***)	4,202	(***)	0.15		
South Carolina.....	(***)	108	53	(***)	332	90	(***)	3,987	987	(***)	600	(***)	0.15		
South Dakota.....	(***)	3	1	(***)	30	2	(***)	250	80	(***)	36	(***)	0.15		
Tennessee.....	(***)	160	40	(***)	453	253	(***)	2,559	719	(***)	384	(***)	0.15		
Texas.....	(***)	186	42	(***)	1,158	242	(***)	1,892	137	(***)	285	(***)	0.15		
Utah.....	(***)	75	24	(***)	366	294	(***)	3,546	3,190	(***)	354	(***)	0.10		
Virginia.....	(***)	250	90	(***)	700	783	(***)	2,950	2,978	(***)	445	(***)	0.15		
Washington.....	5,261	4,536	1,566	35,315	39,004	29,841	263,628	425,207	139,400	75,239	46,554	0.26	0.11		
West Virginia.....	(***)	22	—	(***)	147	—	(***)	116	—	(***)	17	(***)	0.15		
Wisconsin.....	(***)	15	—	(***)	211	—	(***)	242	—	(***)	37	(***)	0.15		
All other States.....	(***)	2	—	(***)	10	—	(***)	—	—	(***)	—	(***)	0.15		

***Not available; separate inquiry not carried on schedule for all States. See text.
¹Farms reporting trees on census date and/or production for previous crop year.
²Data for 1940 and 1930 Censuses are for filberts and hazelnuts.

Table 16.—TUNG NUTS—FARMS REPORTING AND NUMBER OF TREES, 1930 TO 1945; QUANTITY HARVESTED, 1944, 1939, AND 1929; AND VALUE, 1944 AND 1939; BY STATES

STATE	FARMS REPORTING ¹				NUMBER OF TREES (ALL AGES)				QUANTITY HARVESTED (POUNDS)			VALUE (DOLLARS)			Average per pound			
	1945	1940	1935	1930	1945	1940	1935	1930	1944	1939	1929	1944	1939	1944	1939	1944	1939	
																		1944
United States.....	4,180	2,304	627	144	9,583,097	12,671,344	3,632,361	350,793	62,693,547	2,321,139	119,310	3,130,197	52,523	0.050	0.023			
Alabama.....	634	207	104	23	317,530	105,072	63,364	8,687	1,137,186	22,302	5,550	54,575	332	0.048	0.015			
California.....	(***)	10	—	(***)	1,443	—	—	(***)	—	(***)	—	(***)	(***)	(***)	(***)	(***)	(***)	
Florida.....	575	367	174	85	2,291,232	1,208,784	1,084,511	300,834	11,796,572	1,112,115	111,220	566,236	33,365	0.048	0.030			
Georgia.....	642	283	101	7	180,479	80,360	215,898	3,182	1,584,878	33,025	2,390	62,121	581	0.047	0.017			
Louisiana.....	668	373	41	8	2,066,531	1,758,819	213,009	4,844	13,963,541	301,761	—	898,171	5,431	0.050	0.015			
Mississippi.....	1,599	851	192	20	4,717,673	9,461,143	2,068,119	33,451	34,463,077	843,606	150	1,746,676	12,694	0.051	0.015			
South Carolina.....	(***)	29	—	(***)	560	—	—	(***)	—	(***)	—	14	(***)	0.017				
Texas.....	44	204	15	1	9,442	37,183	7,480	15	8,293	7,497	—	416	136	0.050	0.018			

***Not available; separate inquiry not carried on schedule for all States. See text.
¹Farms reporting trees on census date and/or production for previous crop year.

CENSUS OF AGRICULTURE: 1945

Table 17.—ORANGES—FARMS REPORTING AND NUMBER OF TREES 1945, 1940, AND 1935; QUANTITY HARVESTED, 1944, 1939, AND 1934; AND VALUE, 1944 AND 1939; BY STATES

STATE	FARMS REPORTING ¹			NUMBER OF TREES (ALL AGES)				QUANTITY HARVESTED ²			VALUE (DOLLARS)						
	1945	1940 ³	1935 ³	1945	1940	1935 ³	Percent increase or decrease (-)		1944 (tons)	1939 (tons)	1934 ³ (field boxes)	1944	1939	Average per ton		Percent of total value of specified crops	
							1940-1945	1935-1940						1944	1939	1944	1939
United States..	57,731	54,686	65,706	38,850,840	35,849,518	38,935,649	8.4	-7.9	3,792,940	2,767,498	70,482,013	238,086,473	58,954,578	62.77	21.30	1.6	1.0
Alabama.....	401	380	1,210	8,770	29,770	339,872	-70.5	-91.2	277	682	133,649	27,658	54,121	99.85	50.03	(4)	(4)
Arizona.....	2,946	1,552	1,708	649,747	565,867	827,171	14.8	-9.8	48,957	18,945	380,213	3,522,996	419,857	71.99	22.16	5.3	1.7
California.....	26,146	22,400	20,782	20,389,691	18,686,000	19,977,518	9.1	-6.5	1,779,670	1,547,710	47,500,699	140,469,081	59,352,680	78.93	25.43	12.9	11.6
Florida.....	18,721	21,206	28,699	15,502,216	14,686,310	15,432,050	5.8	-4.8	1,809,721	1,082,120	21,067,984	85,540,389	16,579,588	47.27	15.32	37.3	23.4
Georgia.....	674	571	896	3,432	3,729	14,592	-8.0	-74.4	78	72	7,829	6,316	3,605	80.97	50.07	(4)	(4)
Louisiana.....	3,125	2,814	4,802	279,333	318,551	533,842	-12.3	-40.3	8,742	5,997	249,053	671,760	196,318	76.84	32.74	0.3	0.2
Mississippi.....	146	307	804	9,423	57,495	257,929	-83.6	-77.7	242	2,038	113,055	19,542	52,994	80.75	26.00	(4)	(4)
South Carolina.....		25	49		104	181		-42.5		2	55		101		50.50		(4)
Texas.....	5,572	5,431	6,756	2,008,228	1,501,692	1,752,496	33.7	-14.3	145,273	109,932	1,049,476	7,828,731	2,315,334	53.89	21.06	0.9	0.7

¹Farms reporting trees on census date and/or production for previous crop year.
²For 1944, the production is for 1943-1944 season (from the bloom of 1943). For 1939, the production is for 1939-1940 season (from the bloom of 1939) for all citrus-producing States, except Arizona and California for which the production is for the 1938-1939 season (from the bloom of 1938).
³Includes tangerines and mandarins.
⁴0.05 percent or less.

Table 18.—ORANGES (INCLUDING SATSUMAS, TANGERINES, AND MANDARINS)—FARMS REPORTING, 1920 TO 1930; NUMBER OF TREES, 1890 TO 1930; AND QUANTITY HARVESTED, 1889 TO 1929; BY STATES

STATE	NUMBER OF FARMS			NUMBER OF TREES (ALL AGES)						QUANTITY HARVESTED (BOXES ¹)				
	1930	1925	1920 ²	1930	1925	1920	1910	1900 ³	1890	1929	1919	1909	1899	1889 ⁴
United States...	46,558	58,065	34,585	31,958,314	30,336,802	19,667,058	14,105,492	8,395,522	13,591,136	55,731,352	27,633,184	19,530,129	6,167,891	4,391,787
Alabama.....	821	1,693	776	594,009	621,815	425,830	19,985	22		259,019	40,876	1,201	2	
Arizona.....	1,534	616	237	455,478	131,431	80,314	90,355	48,570	50,160	137,371	80,637	32,247	11,116	
Arkansas.....							73	4				1		
California.....	19,098	22,362	18,540	16,778,919	15,632,045	12,899,775	8,713,260	5,648,714	3,377,591	43,140,726	21,635,102	14,440,316	5,882,193	1,245,047
Florida.....	19,822	24,529	13,114	12,424,199	13,351,983	6,025,668	3,891,588	2,552,542	10,133,815	9,720,998	5,997,897	4,887,839	273,295	3,146,740
Georgia.....	165	440	132	11,804	3,412	3,355	643		140	785	238	210		
Louisiana.....	1,291	3,974	935	361,794	273,397	130,738	430,307	141,116	28,400	82,500	37,458	153,618	1,285	
Mississippi.....	514	983	404	181,684	66,515	65,477	49,089	3,696	774	73,706	31,419	3,779		
New Mexico.....							15					12		
North Carolina.....							108					21		
Oregon.....								1						
South Carolina.....							161					177		
Tennessee.....							79					1		
Texas.....	3,313	3,488	427	1,130,427	254,214	55,901	909,791	855	256	316,245	9,557	10,694		
Virginia.....							38					12		
Washington.....								2						

¹Kind of boxes not specified.
²Farms reporting oranges other than tangerines or mandarins. Tangerine trees of bearing age were reported on 809 farms.
³Trees of bearing age.
⁴Does not include production for Louisiana which was given in number of fruits and amounted to 2,208,750 oranges.

Table 19.—TANGERINES AND MANDARINS²—FARMS REPORTING AND NUMBER OF TREES, 1945 AND 1940; AND QUANTITY HARVESTED AND VALUE, 1944 AND 1939; BY STATES

STATE	FARMS REPORTING ²		NUMBER OF TREES (ALL AGES)		QUANTITY HARVESTED ³ (TONS)		VALUE (DOLLARS)			
	1945	1940	1945	1940	1944	1939	1944	1939	Average per ton	
									1944	1939
United States.....	7,394	10,112	1,172,603	1,303,546	135,954	105,176	6,999,182	2,237,960	51.48	21.23
Florida.....	6,295	8,726	1,114,872	1,234,040	133,443	102,871	6,854,905	2,190,610	51.22	21.29
Louisiana.....	629	423	30,743	46,943	1,102	881	87,058	14,526	79.00	16.87
Texas.....	470	963	26,988	22,563	1,409	1,444	77,219	32,824	54.80	22.73

¹For the States for which a separate inquiry was carried on the Farm and Ranch Schedule.
²Farms reporting trees on census date and/or production for previous crop year.
³For 1944, the production is for 1943-1944 season (from the bloom of 1943). For 1939, the production is for 1939-1940 season (from the bloom of 1939).

FRUITS AND NUTS, AND HORTICULTURAL SPECIALTIES

557

Table 20.—CRAPEFRUIT—FARMS REPORTING AND NUMBER OF TREES, 1945, 1940, AND 1935; QUANTITY HARVESTED, 1944, 1939, AND 1934; AND VALUE, 1944 AND 1939; BY STATES

STATE	FARMS REPORTING ¹			NUMBER OF TREES (ALL AGES)					QUANTITY HARVESTED ²			VALUE (DOLLARS)			
	1945	1940	1935	1945	1940	1935	Percent increase or decrease (-)		1944 (tons)	1939 (tons)	1934 (field boxes)	1944	1939	Average per ton	
							1940-1945	1935-1940						1944	1939
United States.....	26,323	26,768	26,150	10,635,582	10,974,055	13,161,101	-3.1	-18.6	1,546,944	1,235,673	19,495,340	61,486,853	14,304,130	39.75	11.58
Alabama.....	(***)	3	30	(***)	4	113	(***)	-96.5	(***)	(3)	41	(***)	2	(***)	-----
Arizona.....	2,736	1,551	1,702	922,748	809,904	1,028,510	13.9	-21.3	109,826	59,750	1,656,100	4,599,067	818,984	41.86	13.71
California.....	6,930	6,904	4,862	1,106,032	1,185,746	1,412,157	-6.7	-16.0	100,263	81,699	2,750,562	5,874,131	1,360,551	58.59	16.86
Florida.....	12,066	13,535	14,972	5,199,927	5,359,862	5,422,566	-3.0	-1.2	889,670	592,685	11,227,262	35,016,569	8,224,868	39.36	13.88
Georgia.....	(***)	10	61	(***)	36	629	(***)	-94.0	(***)	(3)	192	(***)	1	(***)	-----
Louisiana.....	151	128	164	945	2,651	1,559	-64.1	66.8	5	66	371	240	1,421	48.00	21.53
Mississippi.....	(***)	14	40	(***)	128	402	(***)	-88.2	(***)	3	88	(***)	117	(***)	39.00
South Carolina.....	(***)	2	3	(***)	2	10	(***)	-80.0	(***)	(3)	4	(***)	(*)	(***)	-----
Texas.....	4,440	4,621	6,296	3,405,930	3,615,720	5,295,155	-5.8	-31.7	447,180	501,270	3,876,920	15,994,846	3,878,166	35.77	7.74

***Not available; separate inquiry not carried on schedule for all States. See text.
¹Farms reporting trees on census date and/or production for previous crop year.
²For 1944, the production is for 1943-1944 season (from the bloom of 1943). For 1939, the production is for 1939-1940 season (from the bloom of 1939) for all citrus-producing States, except Arizona and California for which the production is for the 1938-1939 season (from the bloom of 1938). For 1934, the production is for that year.
 *Less than 1 ton.
 †Less than 1 dollar.

Table 21.—CRAPEFRUIT—FARMS REPORTING, 1910 TO 1930; NUMBER OF TREES, 1890 TO 1930; AND QUANTITY HARVESTED, 1889 TO 1929; BY STATES

STATE	FARMS REPORTING				NUMBER OF TREES (ALL AGES)					QUANTITY HARVESTED (1899 TO 1929, BOXES; ¹ 1889, BARRELS)					
	1930	1925	1920 ²	1910 ²	1930	1925	1920	1910	1900 ³	1890	1929	1919	1909	1899	1889
United States.....	20,596	21,865	11,431	6,172	9,236,653	5,026,305	3,073,477	1,350,637	202,723	16,146	8,722,429	3,656,437	1,189,250	30,790	10,080
Alabama.....	8	383	113	66	46	4,901	1,924	704	252	-----	8	339	290	-----	-----
Arizona.....	1,185	459	121	12	672,322	55,556	31,597	3,005	2,799	-----	364,182	28,999	820	635	-----
California.....	4,363	5,364	4,249	932	1,114,057	555,878	313,009	69,013	80,918	1,743	1,387,929	465,085	122,615	17,851	-----
Florida.....	11,160	12,289	6,656	4,670	4,554,029	3,921,819	2,644,817	1,256,262	117,356	14,408	5,971,989	3,158,431	1,061,537	12,306	10,080
Georgia.....	6	247	-----	203	19	1,855	-----	880	-----	-----	1	-----	361	-----	
Kentucky.....	-----	-----	-----	18	-----	-----	-----	99	-----	-----	-----	-----	1	-----	
Louisiana.....	40	489	75	41	2,347	9,951	1,132	4,290	1,279	-----	710	352	1,761	-----	
Mississippi.....	23	120	60	90	481	3,075	1,515	2,979	-----	59	361	1,568	88	-----	
South Carolina.....	2	-----	-----	16	3	-----	-----	51	-----	-----	-----	-----	88	-----	
Texas.....	3,791	2,514	177	116	2,913,349	475,270	79,493	13,312	109	-----	997,551	2,850	488	-----	
Virginia.....	-----	-----	-----	8	-----	-----	-----	42	-----	-----	-----	-----	1	-----	

¹Kind of boxes not specified.
²Farms reporting trees of bearing age.
³Trees of bearing age.

Table 22.—LEMONS—FARMS REPORTING AND NUMBER OF TREES, 1945 AND 1940; AND QUANTITY HARVESTED AND VALUE, 1944 AND 1939; BY STATES

STATE	FARMS REPORTING ¹		NUMBER OF TREES (ALL AGES)			QUANTITY HARVESTED ² (TONS)		VALUE (DOLLARS)			
	1945	1940	1945	1940	Percent increase or decrease (-) 1940-1945	1944	1939	1944	1939	Average per ton	
										1944	1939
United States.....	(***)	13,717	(***)	5,446,927	(***)	(***)	402,609	(***)	15,472,050	(***)	38.43
Specified States.....	14,089	11,082	6,018,963	5,354,751	12.8	469,429	400,497	38,735,656	15,406,911	82.51	38.47
Alabama.....	(***)	2	(***)	5	(***)	(***)	(3)	(***)	2	(***)	-----
Arizona.....	1,688	796	43,980	28,106	56.5	2,394	520	150,822	17,172	65.00	35.02
California.....	12,401	10,286	5,974,983	5,306,645	12.6	467,035	399,977	38,582,814	15,391,739	82.61	38.48
Florida.....	(***)	1,639	(***)	68,088	(***)	(***)	977	(***)	29,956	(***)	29.64
Georgia.....	(***)	4	(***)	7	(***)	(***)	-----	(***)	-----	(***)	-----
Louisiana.....	(***)	96	(***)	634	(***)	(***)	2	(***)	125	(***)	62.50
Mississippi.....	(***)	3	(***)	4	(***)	(***)	-----	(***)	2	(***)	-----
Nevada.....	(***)	1	(***)	2	(***)	(***)	(3)	(***)	-----	(***)	-----
Texas.....	(***)	890	(***)	45,436	(***)	(***)	1,133	(***)	34,054	(***)	30.06

***Not available; separate inquiry not carried on schedule for all States. See text.
¹Farms reporting trees on census date and/or production for previous crop year.
²For 1944, the production is for 1943-1944 season (from the bloom of 1943). For 1939, the production is for 1939-1940 season (from the bloom of 1939) for all citrus-producing States, except Arizona and California for which the production is for the 1938-1939 season (from the bloom of 1938).
 †Less than 1 ton.

Table 23.—LIMES—FARMS REPORTING AND NUMBER OF TREES, 1945 AND 1940; AND QUANTITY HARVESTED AND VALUE, 1944 AND 1939; BY STATES

STATE	FARMS REPORTING ¹		NUMBER OF TREES (ALL AGES)			QUANTITY HARVESTED ² (POUNDS)		VALUE (DOLLARS)			
	1945	1940	1945	1940	Percent increase or decrease (-) 1940-1945	1944	1939	1944	1939	Average per pound	
										1944	1939
United States.....	(***)	2,551	(***)	474,142	(***)	(***)	6,994,166	(***)	223,962	(***)	0.052
Specified States.....	1,073	1,618	321,102	412,617	-22.2	8,578,189	5,822,302	557,798	189,008	0.065	0.052
Arizona.....	(***)	78	(***)	2,536	(***)	(***)	19,120	(***)	959	(***)	0.049
California.....	(***)	780	(***)	55,584	(***)	(***)	1,095,277	(***)	32,856	(***)	0.030
Florida.....	1,073	1,618	321,102	412,617	-22.2	8,578,189	5,822,302	557,798	189,008	0.065	0.032
Georgia.....	(***)	4	(***)	4	(***)	(***)	462	(***)	18	(***)	0.059
Louisiana.....	(***)	1	(***)	1	(***)	(***)	-----	(***)	-----	(***)	-----
Texas.....	(***)	70	(***)	3,400	(***)	(***)	57,005	(***)	1,141	(***)	0.020

***Not available; separate inquiry not carried on schedule for all States. See text.
¹Farms reporting trees on census date and/or production for previous crop year.
²For 1944, the production is for 1943-1944 season (from the bloom of 1943). For 1939, the production is for 1939-1940 season (from the bloom of 1939) for all citrus-producing States, except Arizona and California for which the production is for the 1938-1939 season (from the bloom of 1938).

CENSUS OF AGRICULTURE: 1945

Table 24.—HORTICULTURAL SPECIALTIES—FARMS REPORTING AND VALUE OF SALES, BY DIVISIONS AND STATES: 1944, 1939, AND 1929

REGION, DIVISION, AND STATE	FARMS REPORTING						VALUE OF SALES (DOLLARS)										
	1944 ¹	1939 ¹	1929	Percent of all farms			1944 ¹	1939 ¹	1929	Percent increase or decrease (-)		Rank			Average per farm reporting		
				1944	1939	1929				1939-1944	1929-1939	1944	1939	1929	1944	1939	1929
United States.....	34,890	32,136	29,946	0.5	0.5	0.5	261,258,953	129,575,143	145,702,566	78.5	-11.1	---	---	---	6,666	4,082	4,666
The North.....	17,934	19,245	17,903	0.7	0.7	0.7	137,641,125	88,505,869	101,295,467	55.5	-12.6	1	1	1	7,675	4,599	5,568
The South.....	9,856	7,482	7,402	0.3	0.2	0.2	35,392,860	21,549,703	21,492,136	79.8	-0.7	3	2	3	3,895	2,553	2,904
The West.....	6,900	5,409	4,641	1.4	1.1	0.9	55,224,968	19,719,551	22,916,941	180.1	-14.0	2	3	2	5,004	3,646	4,938
GEOGRAPHIC DIVISIONS:																	
New England.....	2,364	2,637	2,243	1.6	2.0	1.8	18,201,180	12,855,455	17,899,044	41.6	-28.2	5	4	4	7,699	4,875	7,980
Middle Atlantic.....	5,859	6,416	6,255	1.7	1.8	1.7	49,781,834	31,849,832	38,305,589	56.3	-16.9	2	2	1	5,497	4,963	6,124
East North Central.....	7,076	7,768	6,540	0.7	0.8	0.7	52,344,613	32,558,956	32,667,487	60.8	-0.9	1	1	2	7,397	4,193	5,026
West North Central.....	2,635	2,424	2,865	0.3	0.2	0.3	17,313,498	11,241,646	12,221,367	54.0	-8.0	6	6	5	5,571	4,638	4,266
South Atlantic.....	5,270	4,039	3,801	0.5	0.4	0.4	25,386,270	12,328,672	11,784,164	89.7	4.6	4	5	6	4,438	3,015	3,100
East South Central.....	2,204	1,352	1,505	0.2	0.1	0.1	5,475,939	3,660,596	2,955,045	49.6	24.0	9	9	9	2,455	2,708	1,965
West South Central.....	2,382	2,041	2,088	0.3	0.2	0.2	9,550,651	5,360,455	6,764,929	77.8	-20.6	8	7	7	4,001	2,626	3,250
Mountain.....	2,449	1,285	993	1.2	0.5	0.4	10,242,796	3,710,792	3,497,014	176.0	6.1	7	4	8	4,182	2,933	3,522
Pacific.....	4,451	4,144	3,648	1.6	1.5	1.4	44,982,172	16,008,759	19,419,927	181.0	-17.6	3	3	3	10,106	3,863	5,323
NEW ENGLAND:																	
Maine.....	275	316	256	0.7	0.8	0.7	1,500,190	901,264	849,796	44.3	6.1	50	28	29	4,725	2,852	3,329
New Hampshire.....	183	178	161	1.0	1.1	1.1	1,255,013	558,534	390,106	124.7	45.2	51	34	37	6,858	3,138	2,423
Vermont.....	95	96	94	0.4	0.4	0.4	304,183	299,074	339,472	1.7	-11.9	46	43	39	3,202	3,115	5,611
Massachusetts.....	1,193	1,244	1,190	3.2	3.9	4.6	6,721,693	6,721,720	10,179,852	29.9	-54.0	9	7	6	7,517	5,403	6,584
Rhode Island.....	150	183	113	4.2	6.1	3.4	1,229,171	653,100	1,344,692	88.2	-51.4	32	31	23	8,194	3,569	11,900
Connecticut.....	468	620	429	2.1	2.9	2.5	5,385,950	3,721,763	4,785,126	44.7	-22.4	14	11	9	11,504	6,003	11,177
MIDDLE ATLANTIC:																	
New York.....	2,262	2,731	2,463	1.5	1.8	1.5	20,729,540	13,356,509	15,328,296	55.4	-13.0	2	1	1	9,164	4,803	6,223
New Jersey.....	898	1,145	949	3.4	4.4	3.7	10,511,604	7,332,784	9,018,647	43.4	-18.7	6	5	7	11,706	6,404	9,504
Pennsylvania.....	2,699	2,542	2,643	1.6	1.5	1.6	18,540,890	11,180,559	13,988,446	65.8	-19.9	3	4	3	8,869	4,398	4,910
EAST NORTH CENTRAL:																	
Ohio.....	1,948	2,324	2,152	0.9	1.0	1.0	15,351,693	11,286,939	11,440,901	37.9	-1.5	5	5	4	7,473	4,848	5,356
Indiana.....	1,055	1,176	972	0.6	0.6	0.5	6,153,735	4,118,655	3,848,643	48.7	7.6	11	9	12	5,804	3,502	3,980
Illinois.....	1,461	1,945	1,249	0.7	0.8	0.6	17,025,155	9,405,622	10,804,116	81.0	-11.3	4	5	5	11,653	5,718	6,490
Michigan.....	1,781	1,810	1,551	1.0	1.0	0.9	9,817,600	5,004,663	4,852,393	96.2	3.1	7	8	8	5,512	2,765	3,122
Wisconsin.....	831	811	636	0.5	0.4	0.3	3,846,427	2,762,677	2,121,234	39.2	30.2	18	14	19	4,629	3,407	3,335
WEST NORTH CENTRAL:																	
Minnesota.....	548	586	452	0.3	0.3	0.2	3,743,932	2,085,693	3,170,993	39.4	-15.3	19	15	14	6,832	4,565	7,015
Iowa.....	519	458	678	0.3	0.2	0.3	2,984,997	3,345,873	3,157,629	44.7	9.1	16	12	15	9,505	7,524	6,671
Missouri.....	713	611	710	0.3	0.2	0.3	5,020,116	2,413,424	2,798,304	108.0	-15.7	15	17	16	7,041	3,950	3,957
North Dakota.....	87	39	101	0.1	0.1	0.1	355,066	157,708	160,416	112.5	-12.6	45	45	45	3,851	4,150	1,786
South Dakota.....	76	54	82	0.1	0.1	0.1	365,841	390,210	300,344	-7.7	31.9	44	37	42	4,614	7,337	3,653
Nebraska.....	223	222	294	0.2	0.2	0.2	1,101,154	884,352	1,077,372	28.8	-20.7	34	30	25	4,396	3,651	3,665
Kansas.....	469	455	550	0.3	0.3	0.3	1,762,392	1,287,806	1,559,109	36.9	-16.3	27	24	21	3,758	2,843	2,798
SOUTH ATLANTIC:																	
Delaware.....	133	123	115	1.4	1.4	1.2	908,347	583,118	557,080	55.8	4.7	35	32	35	6,830	4,741	4,844
Maryland.....	440	459	576	1.1	1.1	1.3	2,992,720	2,131,739	2,281,815	40.4	-6.6	22	19	18	6,902	4,644	5,951
District of Columbia.....	13	26	26	87.5	40.0	25.0	204,875	220,857	622,429	-7.2	-64.5	48	44	32	15,638	8,494	26,940
Virginia.....	898	862	455	0.5	0.4	0.3	3,315,197	2,108,123	1,385,320	57.3	52.2	20	20	22	5,692	3,184	3,185
West Virginia.....	455	188	149	0.4	0.2	0.2	651,810	362,875	327,091	15.8	2.1	38	38	40	1,498	2,994	2,193
North Carolina.....	960	492	522	0.3	0.2	0.2	1,951,571	1,137,472	958,794	71.5	18.6	25	26	27	2,032	2,312	1,857
South Carolina.....	518	184	253	0.4	0.1	0.2	758,764	305,305	305,332	148.5	(2)	37	42	41	1,228	1,659	1,207
Georgia.....	715	470	606	0.3	0.2	0.2	3,000,396	1,345,186	1,244,588	123.4	7.9	21	22	24	4,196	2,558	2,047
Florida.....	1,056	1,485	1,117	1.7	2.4	1.9	9,805,590	3,836,017	4,101,735	144.0	-4.0	8	10	11	9,094	2,651	3,672
EAST SOUTH CENTRAL:																	
Kentucky.....	337	286	254	0.1	0.1	0.1	1,585,478	1,118,581	591,050	41.7	89.3	28	27	33	4,705	3,884	2,327
Tennessee.....	770	625	477	0.3	0.3	0.2	1,832,818	1,279,471	952,180	43.2	34.4	26	25	28	2,380	2,047	1,996
Alabama.....	720	229	461	0.3	0.1	0.2	1,459,358	860,994	785,445	69.5	9.9	29	29	30	2,027	3,760	1,699
Mississippi.....	377	210	311	0.1	0.1	0.1	598,265	401,550	626,370	46.0	-35.9	39	36	31	1,567	1,912	2,014
WEST SOUTH CENTRAL:																	
Arkansas.....	464	275	359	0.2	0.1	0.1	786,647	362,590	346,367	117.0	-35.6	36	39	36	1,895	1,319	1,522
Louisiana.....	317	246	308	0.2	0.2	0.2	577,298	413,820	585,352	59.5	-29.1	40	35	34	1,821	1,682	1,594
Oklahoma.....	380	269	330	0.2	0.1	0.2	2,255,118	1,299,392	969,620	73.6	34.0	24	23	25	3,955	4,650	2,956
Texas.....	1,221	1,251	1,101	0.3	0.3	0.2	5,911,588	3,284,655	4,655,590	80.0	-29.4	13	13	10	4,842	2,826	4,229
MOUNTAIN:																	
Montana.....	107	107	64	0.3	0.3	0.1	529,353	351,982	155,838	50.4	125.9	41	40	46	4,247	3,290	2,455
Idaho.....	1,052	326	129	2.5	0.7	0.3	2,796,726	350,451	289,225	896.0	21.2	23	41	45	2,658	1,075	2,242
Wyoming.....	176	59	28	1.4	0.4	0.2	367,331	65,990	58,429	466.6	12.9	43	48	48	2,064	1,118	2,087
Colorado.....	717	540	494	1.5	1.0	0.8	4,584,218	2,307,250	2,300,673	96.7	0.3	17	18	17	6,394	4,273	4,657
New Mexico.....	99	43	36	0.3	0.1	0.1	245,796	90,055	102,266	155.9	-6.1	47	47	47	2,483	2,254	2,691
Arizona.....	78	58	114	0.6	0.3	0.8	421,502	150,327	375,647	225.4	-65.3	42	46	38	5,404	2,247	3,295
Utah.....	202	117	117	0.8	0.5	0.4	1,188,441	374,008	199,296	217.8	87.7	33	38	44	5,865	3,197	1,706
Nevada.....	16	15	9	0.5	0.4	0.3	109,427	34,699	15,640	215.4	121.9	49	49	49	6,839	2,515	1,738
PACIFIC:																	
Washington.....	1,166	1,119	947	1.5	1.4	1.3	6,708,460	2,570,919	3,306,466	151.2	-19.2	10	15	13	5,744	2,387	3,492
Oregon.....	1,414	923	755	2.2													