

The value of crops sold per acre of cropland and the value of all farm products sold per acre of all land ranged from highest on Class I farms to lowest on Class VI farms. On livestock farms, the average value of all farm products sold per acre of all land was \$100 on Class I farms, \$32 on Class III farms, and \$8 on Class VI farms.

For all commercial farms in the Corn Belt in 1954 the average

value of farm products sold per acre of land in farms was \$40. The average for all farms in the United States was \$21.28 (fig. 37). In a number of smaller regions in different parts of the United States, the average value of farm products sold per acre of farmland was equal to or above that of the Central and Eastern Corn Belt. But most of the area of the United States was below the Corn Belt average. Parts of the Southern and Western Corn Belt were about equal to or below the United States average.

TABLE 94.—SPECIFIED RESOURCE INPUTS AND VALUE OF FARM PRODUCTS SOLD IN RELATION TO LAND ACREAGE, BY TYPE AND ECONOMIC CLASS OF FARM, IN THE CORN BELT: 1954

| Type and economic class of farm | Capital investment per acre of all land in farms (dollars) |                                     | Total specified expenses per acre of all land in farms <sup>2</sup> (dollars) | Acres of cropland per tractor | Investment in machinery and equipment per acre of cropland (dollars) | Value of all crops sold per acre of cropland (dollars) | Value of farm products sold per acre of all land in farms (dollars) |                   |
|---------------------------------|--|-------------------------------------|---|-------------------------------|--|--|---|-------------------|
|                                 | Total <sup>1</sup>   | Livestock, machinery, and equipment |   |                               |  |  | Livestock and livestock products                                    | All farm products |
| All commercial farms.....       | 206  | 49                                  | 12  | 92                            | 39   | 20   | 26  | 40                |
| Cash-grain farms:               |  |                                     |   |                               |  |  |   |                   |
| Total.....                      | 216  | 39                                  | 9   | 101                           | 36   | 33   | 8   | 35                |
| Class I.....                    | 277  | 35                                  | 13  | 144                           | 29   | 51   | 12  | 56                |
| II.....                         | 252  | 40                                  | 10  | 114                           | 33   | 40   | 10  | 44                |
| III.....                        | 202  | 39                                  | 8   | 101                           | 36   | 30   | 8   | 32                |
| IV.....                         | 173  | 39                                  | 7   | 85                            | 40   | 24   | 6   | 23                |
| V.....                          | 162  | 40                                  | 6   | 68                            | 47   | 20   | 3   | 17                |
| VI.....                         | 142  | 35                                  | 5   | 65                            | 47   | 13   | 2   | 10                |
| Livestock farms: <sup>3</sup>   |  |                                     |   |                               |  |  |   |                   |
| Total.....                      | 204  | 57                                  | 15  | 91                            | 41   | 9  | 39  | 45                |
| Class I.....                    | 257  | 69                                  | 29  | 113                           | 39   | 13   | 91  | 100               |
| II.....                         | 235  | 62                                  | 16  | 96                            | 41   | 12   | 45  | 53                |
| III.....                        | 188  | 55                                  | 11  | 88                            | 41   | 7  | 28  | 32                |
| IV.....                         | 158  | 49                                  | 9   | 81                            | 42   | 4  | 19  | 21                |
| V.....                          | 143  | 46                                  | 7   | 68                            | 48   | 3  | 13  | 15                |
| VI.....                         | 123  | 38                                  | 5   | 70                            | 50   | 2  | 8   | 8                 |

<sup>1</sup> Value of total investment in land, buildings, livestock, machinery, and equipment.  
<sup>2</sup> Total of expenditures for machine hire, hired labor, feed bought, gasoline and other petroleum fuel and oil, commercial fertilizer and fertilizing material, and lime and ming material.

<sup>3</sup> Livestock other than dairy and poultry farms.

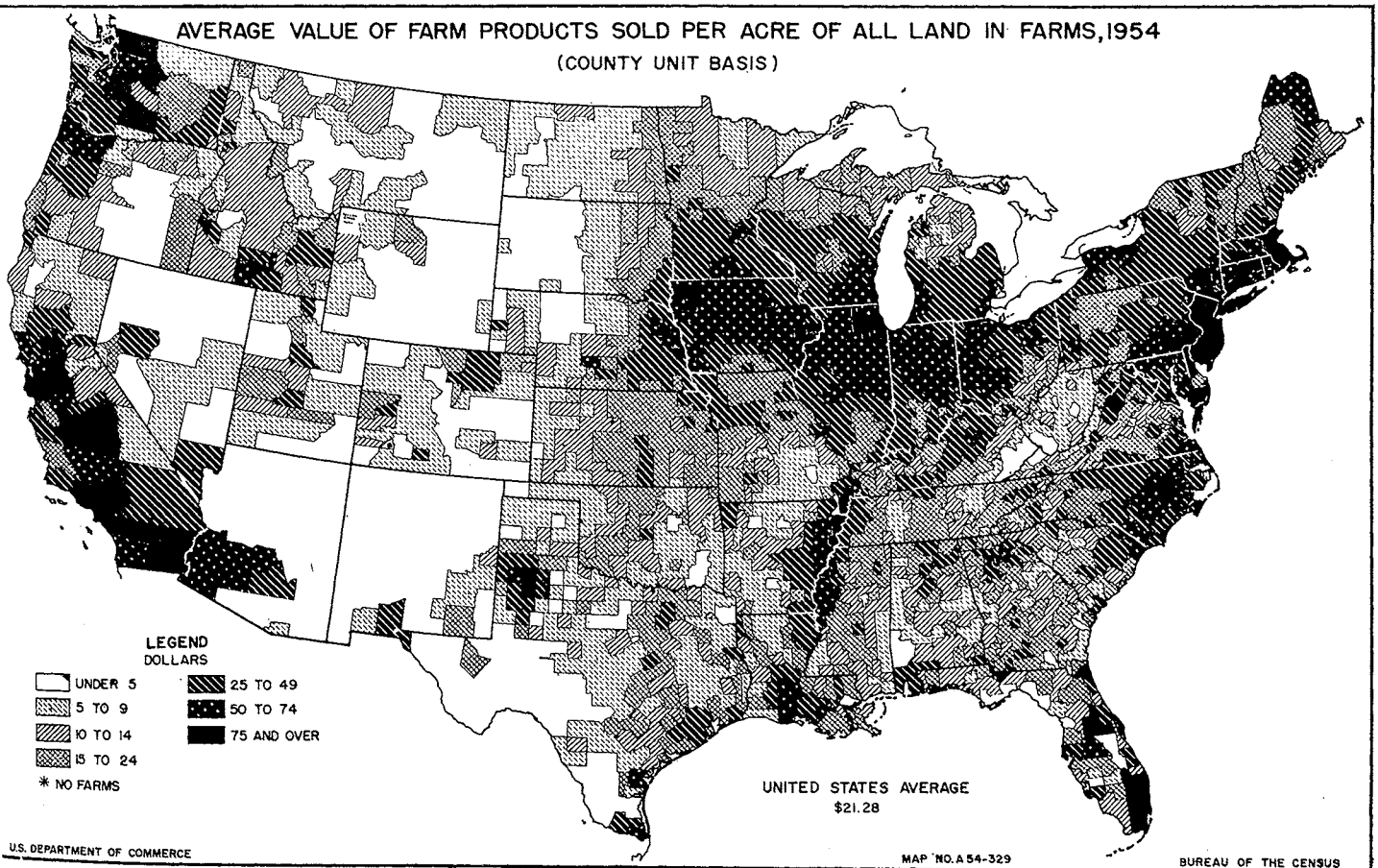


FIGURE 37.