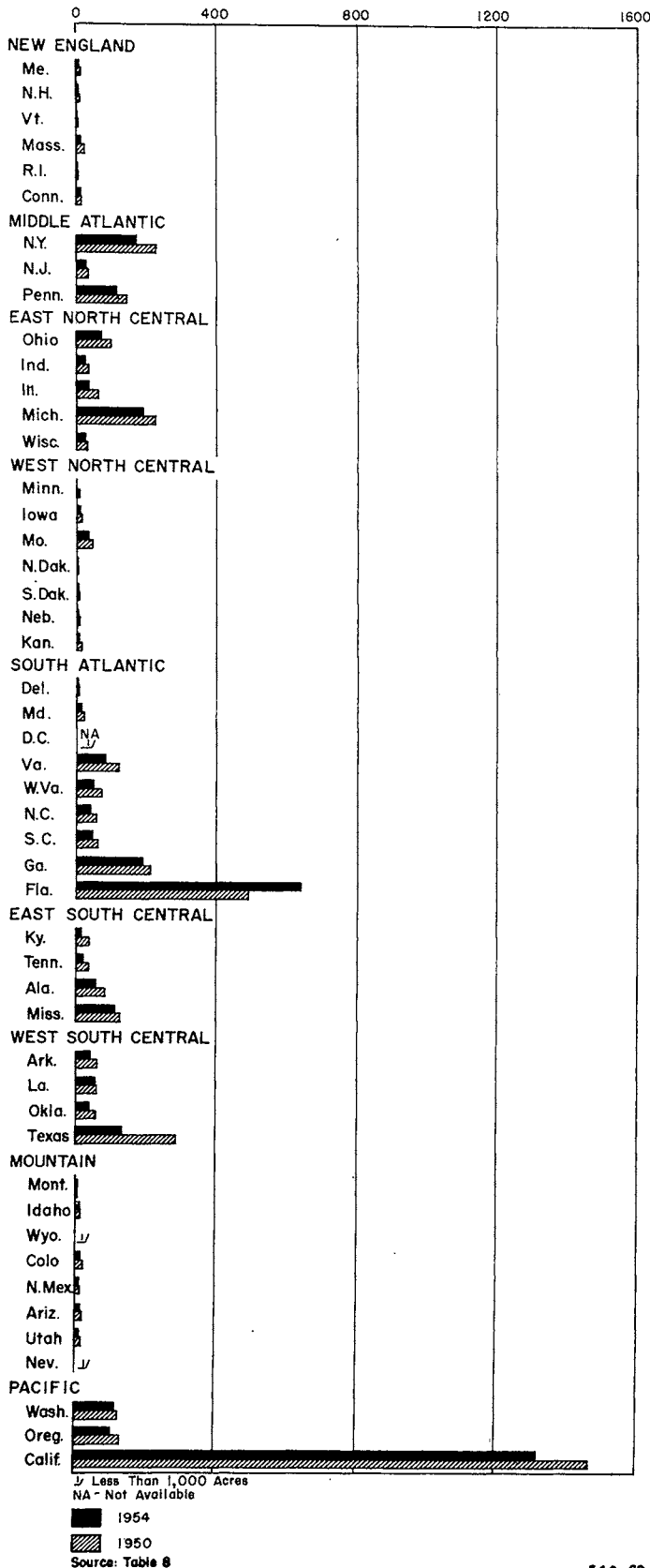


LAND IN BEARING AND NONBEARING FRUIT ORCHARDS, GROVES, VINEYARDS, AND PLANTED NUT TREES, BY STATES: 1954 AND 1950
THOUSANDS OF ACRES



54C-69

(or vines) which did not produce fruit because of adverse weather or disease as trees not of bearing age. Also, the

position of the inquiries on the questionnaire (the inquiry for trees not of bearing age was first) may have resulted in the reporting of the total number of trees or vines or the number of bearing trees or vines for the number of trees or vines not of bearing age. Whenever such errors were noted during the office processing of the Agriculture Questionnaire, corrections were made. However, it was not always possible to detect such errors.

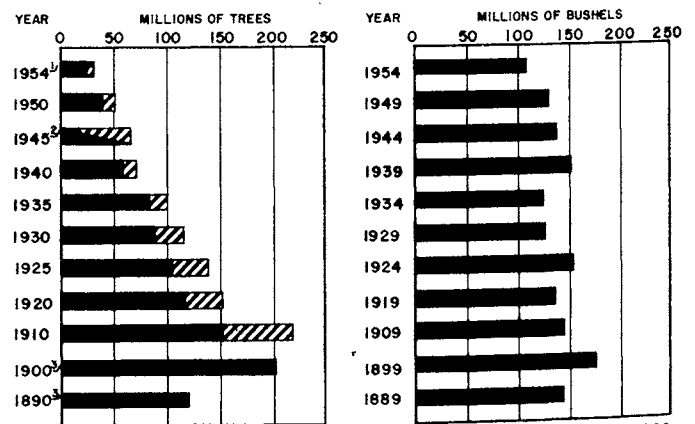
Apples.—A separate inquiry for apples appeared on the questionnaire for all States except Florida. In Florida, apples were to be reported in the space provided for reporting fruits for which a separate inquiry did not appear on the questionnaire. The questionnaire called for the number of trees not of bearing age, the number of trees of bearing age, and the quantity harvested.

The unit of measure used in enumerating quantity harvested was bushels in all States except Oregon and Washington where loose boxes were used and in California and Arizona where tons were used. The conversion of tons to bushels was made on the basis of standard weights and measures. On the basis of information collected in connection with the 1950 Census a loose box of apples in Washington and Oregon was considered equivalent to 3/4 of a bushel.

For 1954, the Census shows only 325,671 farms reporting apples or only one-fifth of the 1.5 million farms reporting apples in 1950. Part of this decrease is actual and represents a reduction in the number of farms and a decline in the number of farms with apple trees. However, a large part of the decrease in the number of farms reporting apples resulted from the change in procedure from 1950 to 1954. Farms with a combined total of less than 20 fruit or nut trees and vines were not counted as farms reporting apples in 1954.

In 1954, the total number of apple trees was 31.8 million, or a decrease of one-third from the number in 1950. This decrease in the number of apple trees was affected in only a small way by not counting apple trees on farms with a total of less than 20 fruit or nut trees or grapevines in 1954. The 1954 total is the smallest number of trees ever reported for a Census, and is only 14.7 percent of the total number of trees reported in 1910—the largest number ever reported by a Census. The total quantity harvested in 1954 was 109 million bushels, or 83 percent of that for 1949. This is also the smallest apple production reported for any Census.

APPLES - NUMBER OF TREES OF BEARING AGE AND OF TREES NOT OF BEARING AGE, 1890 TO 1954; AND PRODUCTION, 1889 TO 1954: FOR THE UNITED STATES



54C-026

1/ For 1954, does not include data for farms with less than 20 trees.
 2/ Bearing and nonbearing trees not reported separately
 3/ Data not available for nonbearing trees

■ Of bearing age ▨ Not of bearing age