

Tung nuts.—Tung nut production is concentrated in the warm, humid areas along the Gulf Coast. A separate inquiry was carried on the questionnaire for only four States: Alabama, Florida, Louisiana, and Mississippi. However, scattered trees or small groves were reported in several other States. The unit of measure used for reporting quantity harvested was pounds for all States. The quantity of tung nuts harvested represents the weight of whole dry nuts, including husks, and not the pounds of oil.

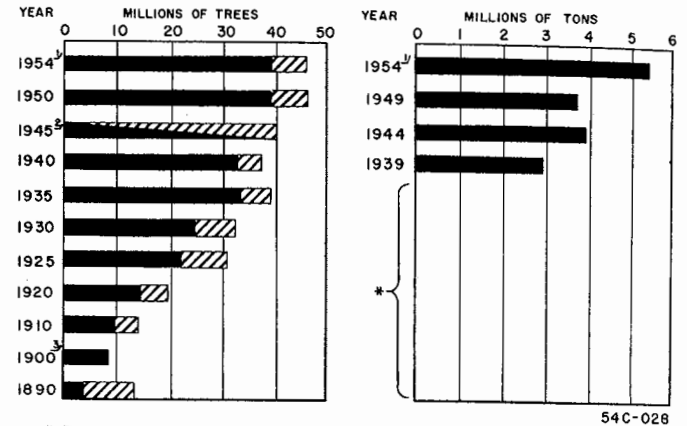
Citrus fruits, avocados, and olives.—The harvest season for these crops usually covers a portion of two calendar years. For that reason, it has been necessary in a Census enumeration to specify the harvest period in order that the reports may include production for only one crop year. In the 1954 Census, the production for these crops was fixed as the amount harvested in the calendar years 1953 and 1954, from the bloom of 1953. However, acres of land in orchards, groves, or vineyards, and tree counts were to be reported as of the date of farm enumeration. Tables showing comparable data for citrus fruits, avocados, and olives carry footnotes indicating the specific harvest period to which the data for quantity harvested relate.

Oranges.—A separate inquiry was made for oranges by varieties for the several States, as follows: for Arizona and California, the separate inquiries were for Valencia oranges, Navel oranges, and other oranges, including tangerines, and mandarins. The unit of measure for reporting quantity harvested was field boxes. In Florida there were separate inquiries for tangerines and mandarins, Temple oranges, Valencia oranges, and other oranges. The unit of measure for reporting quantity harvested was field boxes. For the 123 counties in East Texas, there was an inquiry on Valencia oranges and other oranges, including tangerines and mandarins. The unit of measure for reporting quantity harvested was tons. In Louisiana there was one inquiry on oranges, including tangerines and mandarins, and the unit of measure for reporting quantity harvested was field boxes. The data for quantity harvested in this chapter are in tons. The conversion factors used for the several States are listed in Table 2 of this chapter. Table 138 of Chapter VII provides a summary, by States, on the proportion of the orange crop (trees and quantity harvested) for irrigated and nonirrigated farms.

Grapefruit.—A separate inquiry on grapefruit appeared on the questionnaire in Arizona, California, Florida, and East Texas (123 counties). The scattered trees and small groves of grapefruit for other areas of the country were reported by the farm operator or enumerator in the space provided for reporting miscellaneous fruit crops. The unit of measure for reporting quantity harvested was field boxes in all States except Texas where it was tons. Data are presented in the tables of this chapter in tons and the conversion factors are given in Table 2. (See Table 138, of Chapter VII, for a summary for both trees and quantity for irrigated and nonirrigated groves.)

Miscellaneous orchard fruits and nuts.—Figures obtained and presented in the tables of this chapter for the minor fruit and nut crops were reported by farm operators or Census enumerators by writing in the name of the crop and reporting the data in the space provided in the Agriculture Questionnaire for reporting miscellaneous fruits and nuts. In many instances, the minor fruit and nut crops represent scattered trees or small groves of little commercial importance. Also, in the case of black walnuts it is likely that a considerable number of the trees reported were actually not planted trees grown in an orchard or grove but represent occasional shade or forest trees along the fences or in the farm yard. The information collected for these crops was the same as that for citrus fruit crops, viz, nonbearing trees, bearing trees, and quantity harvested. The acreage for individual fruit or nut crops is not

ORANGES (INCLUDING TANGERINES AND MANDARINS) NUMBER OF TREES OF BEARING AGE AND NUMBER OF TREES NOT OF BEARING AGE, 1890 TO 1954; AND PRODUCTION, 1939 TO 1954: FOR THE UNITED STATES



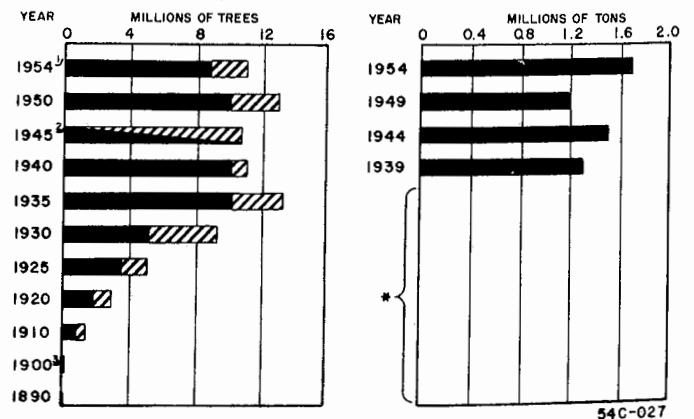
* Data not available in same unit
 1 For 1954, does not include data for farms with less than 20 trees
 2 Bearing and nonbearing trees not reported separately
 3 Data not available for nonbearing trees

■ Of bearing age ▨ Not of bearing age

available except in Arizona and California. The conversion factors used for various units of measure are shown in Table 2 of this chapter.

Horticultural specialties (nursery and greenhouse products, etc.)—The 1954 Agriculture Questionnaire included three inquiries relating to horticultural speciality crops. (a) One question asked for the acres of nursery products (trees, shrubs, vines, ornamentals, etc.) on the place and the value of sales in 1954 from this acreage. Provision was made for reporting the area in tenths of acres. The area was to include the entire acreage of such nursery products regardless of whether the trees, plants, etc., were large enough or old enough for marketing. The acreage, however, was not to include such items as reforested tracts, new orchards, or vineyards. Acreages of reforestation projects reported were eliminated in the office processing of the questionnaires. (b) The second question asked for the commercial area (acreage grown in the open

GRAPEFRUIT - NUMBER OF TREES OF BEARING AGE AND NUMBER OF TREES NOT OF BEARING AGE, 1890 TO 1954; AND PRODUCTION, 1939 TO 1954: FOR THE UNITED STATES



* Data not available in same unit
 1 For 1954, does not include data for farms with less than 20 trees
 2 Bearing and nonbearing trees not reported separately
 3 Data not available for nonbearing trees

■ Of bearing age ▨ Not of bearing age