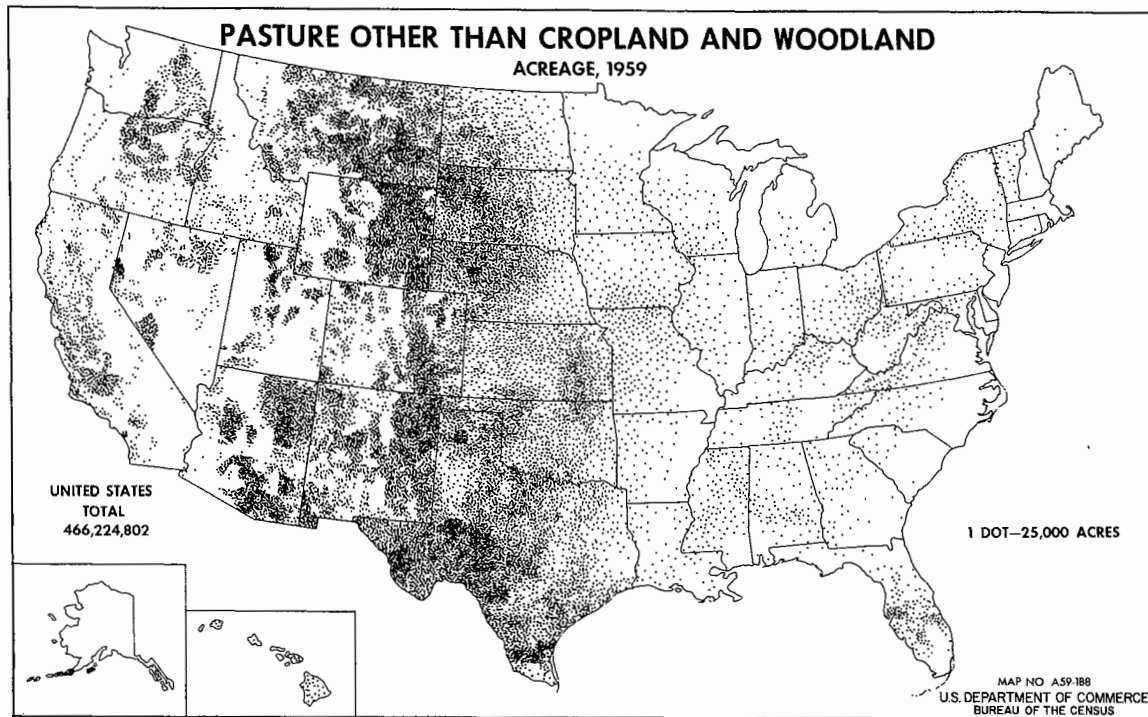
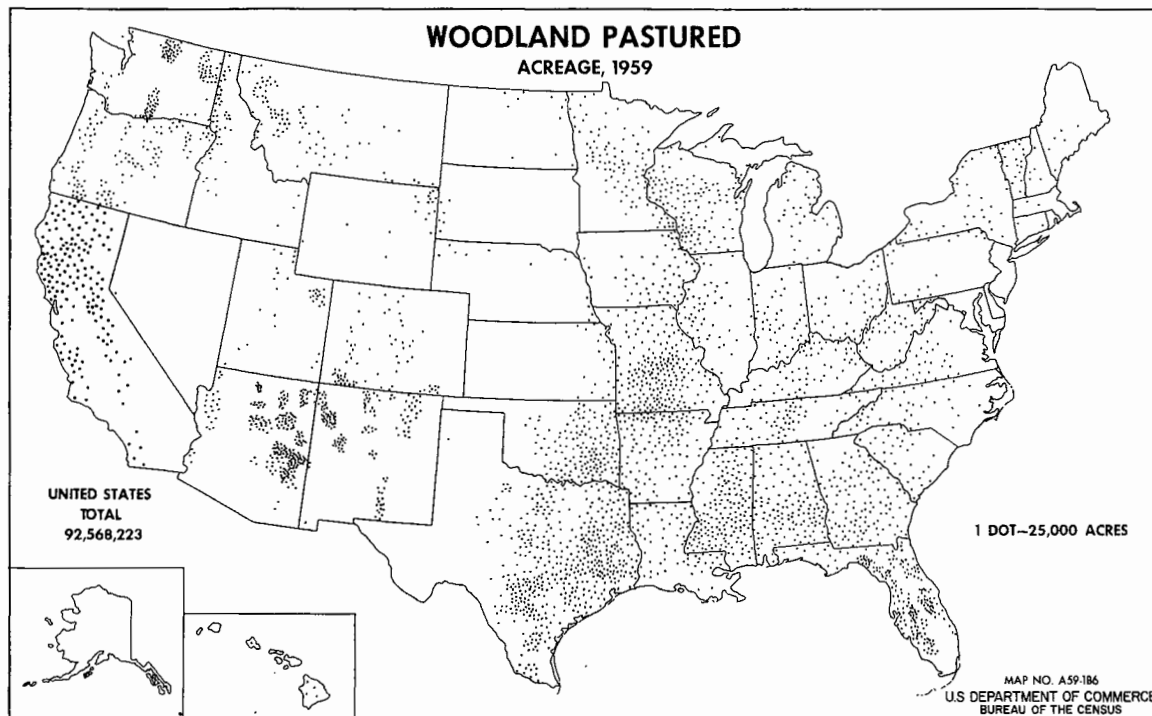


GENERAL REPORT



Pastureland other than cropland and woodland varies greatly in quality. In 1959, the total area of this kind of pasture was 466 million acres. Approximately 23 million acres or 5 percent

of this class of land has been improved by liming, fertilizing, irrigating, draining, or reseeding.



Woodland pasture in farms totaled 93 million acres in 1959. The productivity of this kind of pasture varies greatly. The area includes cutover forests, land once used for crops or open pasture in the process of reverting to forest land, arid woodland, brush and scrub land, etc.

Woodland in farms totaled 164 million acres and accounted for nearly one-sixth of land in farms. Much of the woodland in farms is located in the Appalachian Mountain and Southeastern States.