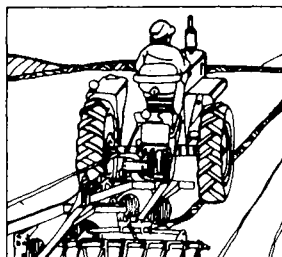
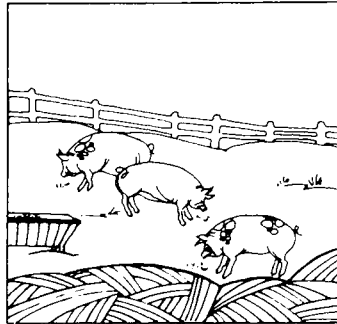
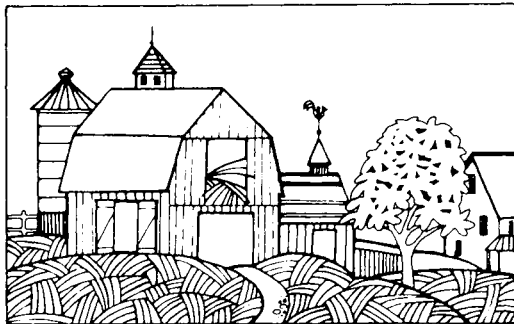
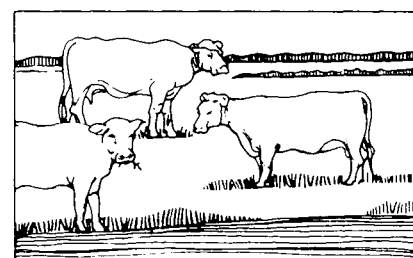
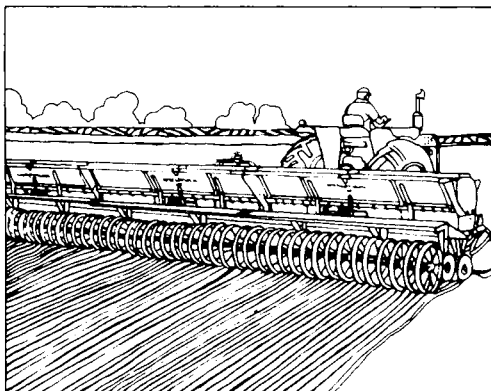
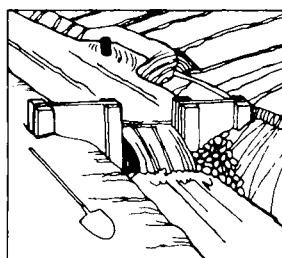
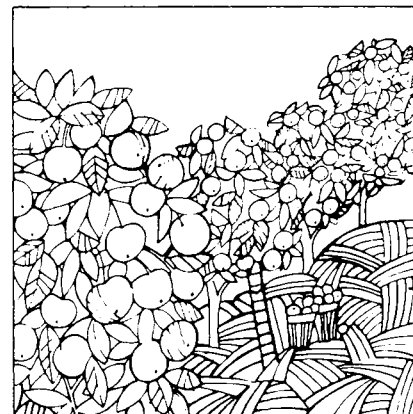
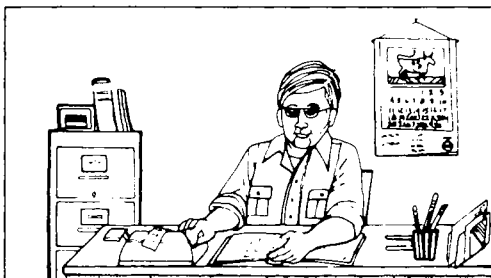
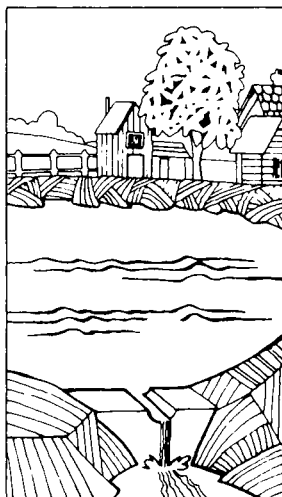


part 54
AMERICAN SAMOA

**VOLUME I
AREA REPORTS**



1969 CENSUS OF AGRICULTURE



Issued September 1972



U. S. DEPARTMENT OF COMMERCE Peter G. Peterson, Secretary
James T. Lynn, Under Secretary
Harold C. Passer, Assistant Secretary for Economic Affairs
and Administrator,
Social and Economic Statistics Administration
BUREAU OF THE CENSUS George Hay Brown, Director



BUREAU OF THE CENSUS

George Hay Brown, Director

Robert L. Hagan, Deputy Director

Walter F. Ryan, Associate Director for Economic Fields

James W. Turbitt, Associate Director for
Economic Operations

AGRICULTURE DIVISION

J. Thomas Breen, Chief

REPORTS OF THE 1969 CENSUS OF AGRICULTURE

Individual County Reports

These eight-page reports are issued for each county and State. They also appear as section 2 of volume 1 for the State to which they pertain. The tables contain totals for farms, land, production, expenses, income and sales, machinery and equipment, livestock, crops, and nursery, greenhouse, and forest products.

Volume I. Area Reports

A separate report is published for each State, American Samoa, Guam, Puerto Rico, Trust Territory, and the Virgin Islands. The report consists of two sections. Section 1 contains the introduction, State summary data, county summary of selected data, miscellaneous items by counties (crops or livestock appearing in relatively few counties and therefore not listed in the county tables on a nationwide basis), and an appendix giving explanations, definitions, and examples of the report forms used. Section 2 contains the detailed county reports.

Volume II. General Report

Statistics by subject will be presented, with totals for the United States, Regions, and States.

Volume III. Agricultural Services

This is a new report which will contain data relating to agricultural services.

Volume IV. Irrigation

Data will be included on drainage basins, land irrigated, crop production on irrigated land, water conveyed, users, and types of organization.

Volume V. Special Reports

Reports will be based on data obtained from supplemental surveys, such as type of farm, horticulture, and farm finance; and other subjects based on information obtained in the census.

ACKNOWLEDGMENTS—Many persons participated in the various activities of the 1969 Census of Agriculture. Primary direction of the program was performed by **J. Thomas Breen**, Chief, Agriculture Division, with the helpful guidance and review of **Conrad Taëuber**, Associate Director for Demographic Fields. **Kenneth R. Norell**, Assistant Chief for Special Surveys, Agriculture Division, participated in the overall planning and supervised the preparation of instructions for office processing, training materials, the development of enumeration procedures, and the technical review of statistics prior to their publication. **Hector Vila**, Chief of Outlying Areas Statistical Branch, made significant contributions to the planning and in the preparation of instructions and training materials for the enumeration and in the handling of technical problems in connection with office processing. **Theodore G. Clemence**, under the 1970 Census coordinator's staff, worked in the general planning program.

The census data were collected at the direction of the Governor of American Samoa, Honorable **John M. Haydon**. The actual collection of the data was carried out by census enumerators under the supervision of **Malcolm D. McPhee**, Director of Development Planning, office of the Governor, assisted by **Ariato N. Fallena** of the office of Samoan Affairs.

The manual processing of the questionnaires was performed in Agriculture Division and Systems Division, Bureau of the Census, Washington, D.C.

SUGGESTED CITATION

U.S. Bureau of the Census, Census of Agriculture, 1969
Volume I. Area Reports
Part 54. AMERICAN SAMOA

U.S. Government Printing Office, Washington, D.C., 1972

LIBRARY OF CONGRESS CARD NO. 72-601370

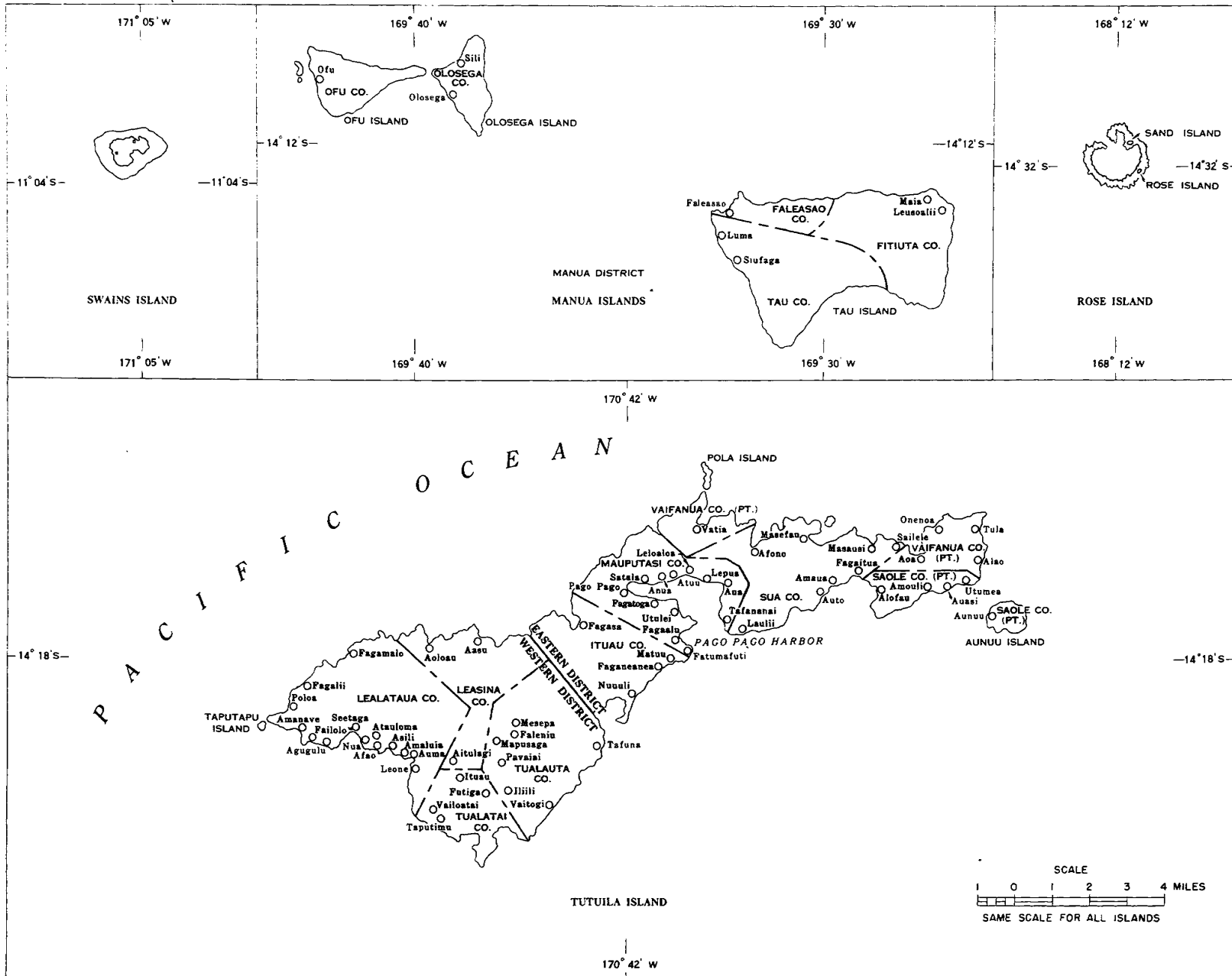
For sale by the Superintendent of Documents, U.S. Government Printing Office, Washington, D.C., 20402, or any Department of Commerce field office. Price 45 cents.

Contents

	<i>page</i>
Map -----	iv
Introduction -----	v
Section 1. Summary Data -----	1
Section 2. District and County Data -----	13
 APPENDIXES	
A. Definitions and Explanations -----	A-1
B. Report Form -----	B-1

AMERICAN SAMOA

Islands, Districts, Counties and Villages



Introduction

History of the Census

The 1970 Census of Agriculture is the sixth U.S. Census of Agriculture in American Samoa. The first was taken in 1920, in conjunction with the Census of Population. Since then, a census of agriculture has been taken in American Samoa every 10 years, at the same time as the population census.

Authority and Area Covered

The Census of Agriculture is authorized by an Act of Congress, "Title 13, United States Code—Census," codified August 31, 1954, with subsequent amendments. Section 191 provides that the census data for American Samoa may be collected by the Governor, or highest ranking Federal official, in accordance with plans prescribed or approved by the Secretary of Commerce. The 1970 census covers agriculture in each one of the States and in American Samoa, Guam, Puerto Rico, U.S. Trust Territory of the Pacific Islands, and the Virgin Islands.

The Agriculture Questionnaire

The questionnaire for the 1970 Census of Agriculture was prepared by the staff of the Census Bureau in cooperation with the Government of American Samoa. It contained a total of 53 inquiries, as compared with 38 on the questionnaire for the 1960 census. Selection of the items asked was based on current needs for agricultural information as well as on the requirements for data in earlier censuses. Definitions and explanations for selected items are given in appendix A. A facsimile of the 1970 questionnaire is shown in appendix B.

In most respects, the questionnaire for the 1970 Census of Agriculture was closely comparable with the one used in 1960. However, several new questions were added relating to land use, production for home use or sales, type of holding, dozens of chicken eggs sold, source and ownership of workpower used, and operator characteristics.

Training Program

Each supervisor, assistant supervisor, and enumerator employed for the 1970 Census of Population and Housing and the 1970 Census of Agriculture in American Samoa received special training for his job. All training was presented according to procedures prepared by the Bureau of the Census. It included practice interviewing, practice filling of census forms, and detailed discussion of the instructions given to enumerators.

Enumeration Period

The enumeration for the census of agriculture was scheduled to begin on April 1, 1970, at the same time and in conjunction with the enumeration for the census of population and housing; however, due to a delay in the starting of the census in American Samoa most of the agriculture census forms were not completed until the end of May.

Dates to Which Data Relate

The 1970 census figures for land in farms, fruit and nut trees, and livestock and poultry on hand represent the situation existing at the time of enumeration of each individual farm. Data for acres and production of crops relate to the crops harvested during the crop year 1969. Data for sales of chickens and chicken eggs relate to the calendar year 1969.

The Enumeration

The schedule which enumerators used for taking the 1970 Census of Population and Housing in American Samoa contained a section at the end where the enumerator was to determine if an agricultural form should also be filled out. Three questions were in this section and a "yes" answer to any one of them meant an agricultural form must be filled out.

The three questions which determined if an agricultural form was required were—

Is this house on a farm?

Were any crops or vegetables harvested from this place in 1969, or is there a combined total of 10 or more fruit and nut trees on this place?

Does this place have any livestock or five or more poultry?

The enumerator was also instructed to ask enough questions about tracts of land on which no one lived to determine whether an agriculture questionnaire was required for the person in charge of the land. This instruction was designed to assure enumeration of all land used for agriculture.

Enumeration Districts

For purposes of enumeration, American Samoa was divided into Enumeration Districts, or "ED's." The ED's were clearly outlined on special maps prepared for the census. Each enumerator was required to canvas the entire area within his assigned ED.

To avoid enumeration of the same place by two or more enumerators, the Census Bureau established rules whereby each enumerator could determine whether or not he was responsible for obtaining the agriculture questionnaire for a given place. If a place was entirely within the boundaries of one ED, the enumerator for the ED was required to obtain the questionnaire, regardless of where the person in charge of the operations lived. If a place was partly in one ED and partly in another, the enumerator for the ED in which the person in charge lived was responsible for obtaining the questionnaire. In such case, he was to report on the questionnaire all the land that the person in charge operated in American Samoa, including the land outside of his ED.

Census Definition of a Farm

For the 1970 Census of Agriculture in American Samoa, a farm was defined as any "place" on which crops were harvested during 1969, or on which there was a combined total of 10 or more fruit or nut trees or plants or any livestock or five or more poultry at the time of enumeration.

The word "place" designates all land in American Samoa under the control of one person or partnership. Control of the land may be through ownership, management, lease, rental, or cropping arrangement. All places were counted as farms for 1970 if they met any of the above criteria of the census definition for a farm.

For the 1960 census, a farm was defined as any "place" on which crops were harvested in 1959, or on which any livestock or five or more poultry were kept on or about April 1, 1960.

To avoid biases that might arise from varying interpretations of the definitions, the Census Bureau did not give enumerators the definition of a farm in either the 1970 or the 1960 censuses. In the 1960 census, enumerators were instructed to obtain an agriculture questionnaire for each Matai who had title to land or claimed ownership of land; and for each person who was not a Matai but was in charge of raising crops in 1959, or of keeping livestock or poultry on privately owned land on April 1, 1960.

In the 1950 census, enumerators were instructed to find out whether any member of a household raised crops in 1949, or kept livestock or poultry on April 1, 1950, and if so, to fill a questionnaire for the person in charge of the agricultural operations.

Office Processing

Each enumerator's work was examined and checked for completeness by the Agriculture Division, Bureau of the Census, in Washington, D.C. All questionnaires were individually edited and

coded prior to tabulation of the data. In the editing process, questionnaires that did not represent farms, according to the census definition, were withdrawn from further processing. The remaining questionnaires were then examined for completeness and consistency. Errors in calculations and units of measure, inconsistencies, and misplaced entries were corrected. Incomplete reports were adjusted on the basis of related information on the same questionnaire or on questionnaires for nearby farms of similar type and size.

In the coding process, numerical codes were entered on all questionnaires to classify farms by size in terms of total area, and by tenure of operator. After the questionnaires had been edited and coded, the information on them was transferred to tabulation sheets. Subject matter specialists of the Bureau of the Census examined the tabulations for reasonableness and consistency. As necessary, they made corrections on the basis of a further reappraisal of the original reports before approving the data for publication.

Presentation of Statistics

This report contains data as compiled from the questionnaires used for the 1970 Census of Agriculture for American Samoa. Totals are given for American Samoa, as a whole, and also for each district and county. Comparable figures for preceding census years are given for those items for which information is available.

Abbreviations and Symbols

The following abbreviations and symbols may occur in the tables:

—	Zero
X	Not applicable
NA	Not available
D	Data withheld to avoid disclosing figures for an individual farm or farm operations.

Section 1

SUMMARY DATA

CONTENTS

	<i>page</i>
TABLE 1. Farms, Land in Farms, by Land Use: 1970 and 1960	2
2. Farms, Land in Farms, by Size of Farm: 1970 and 1960	2
3. Farms, Land in Farms, by Tenure of Operator: 1970 and 1960.....	3
4. Summary, by Size of Farm: 1970 and 1960	4
5. Summary, by Tenure of Operator: 1970 and 1960	6
6. Vegetables and Field Crops: 1970, 1960, and 1950	9
7. Fruits and Nuts: 1970, 1960, and 1950	10
8. Livestock and Poultry: 1970, 1960, and 1950	10
9. Workpower Used, by Size of Farm: 1970	11
10. Workpower Used, by Tenure of Farm Operator: 1970	11

Table 1. Farms, Land in Farms, by Land Use: 1970 and 1960

		Total	Land in crops	Other cropland	Pastureland	All other land
Farms	number 1970..	1,923	1,917	716	303	797
	1960..	2,135	(NA)	(NA)	(NA)	(NA)
Percent distribution	1970..	(X)	99.7	37.2	15.8	41.4
	1960..	(X)	(NA)	(NA)	(NA)	(NA)
Land in farms	acres 1970..	10,409	5,722	1,850	636	2,201
	1960..	11,521	(NA)	(NA)	(NA)	(NA)
Percent distribution	1970..	100.0	55.0	17.8	6.1	21.1
	1960..	100.0	(NA)	(NA)	(NA)	(NA)

NOTE: Information about land use was asked for the first time in the 1970 census.

Table 2. Farms, Land in Farms, by Size of Farm: 1970 and 1960

		Total	Under 3 acres	3 to 9 acres	10 to 19 acres	20 to 49 acres	50 to 99 acres	100 acres and over
Land owned	farms 1970..	1,659	815	683	68	85	5	3
	1960..	1,819	687	912	157	49	8	6
	acres 1970..	9,191	1,370	3,424	874	1,969	354	1,200
	1960..	11,303	1,133	4,561	2,309	1,378	575	1,347
Land owned by Matai	farms 1970..	1,516	751	626	59	74	4	2
	1960..	1,673	620	859	145	40	6	3
	acres 1970..	8,166	1,272	3,117	753	1,732	292	1,000
	1960..	9,473	1,042	4,301	2,171	1,105	454	400
Land owned by non-Matai	farms 1970..	143	64	57	9	11	1	1
	1960..	146	67	53	12	9	2	3
	acres 1970..	1,025	98	307	121	237	62	200
	1960..	1,830	91	260	138	273	121	947
Land rented from others	farms 1970..	328	174	127	14	12	-	1
	1960..	424	179	204	37	4	-	-
	acres 1970..	1,416	268	529	127	192	-	300
	1960..	1,380	295	736	284	65	-	-
Land rented from Matai	farms 1970..	309	167	118	13	10	-	1
	1960..	369	146	191	29	3	-	-
	acres 1970..	1,357	260	501	126	170	-	300
	1960..	1,207	254	692	206	55	-	-
Land rented from non-Matai	farms 1970..	19	7	9	1	2	-	-
	1960..	55	33	13	8	1	-	-
	acres 1970..	59	8	28	1	22	-	-
	1960..	173	41	44	78	10	-	-
Land rented to others	farms 1970..	45	7	34	2	2	-	-
	1960..	132	16	61	45	6	3	1
	acres 1970..	198	40	138	13	7	-	-
	1960..	1,162	42	280	462	74	115	189
Number of tracts: 1 tract	farms 1970..	979	674	259	13	30	1	2
	1960..	762	486	254	15	4	2	1
	acres 1970..	4,215	1,077	1,235	164	677	62	1,000
	1960..	2,515	738	1,190	192	117	128	150
2 tracts	farms 1970..	535	208	289	14	21	1	2
	1960..	411	145	238	20	8	-	-
	acres 1970..	2,997	358	1,430	184	475	50	500
	1960..	1,791	255	1,067	242	227	-	-
3 tracts	farms 1970..	153	44	90	12	6	1	-
	1960..	230	50	154	24	1	-	1
	acres 1970..	957	83	456	164	161	93	-
	1960..	1,229	84	730	275	20	-	120

Table 2. Farms, Land in Farms, by Size of Farm: 1970 and 1960—Continued

		Total	Under 3 acres	3 to 9 acres	10 to 19 acres	20 to 49 acres	50 to 99 acres	100 acres and over
Number of tracts—Continued:								
4 tracts	farms	90	19	39	10	21	1	-
	1960..	158	20	114	20	2	1	1
acres	1970..	903	30	206	137	476	54	-
	1960..	1,058	38	590	230	50	50	100
5 tracts	farms	44	6	30	5	2	1	-
	1960..	105	14	67	13	10	-	1
acres	1970..	357	12	147	63	40	95	-
	1960..	892	24	326	140	272	-	130
6 tracts	farms	42	4	26	6	6	-	-
	1960..	67	5	34	20	6	2	-
acres	1970..	417	7	138	107	165	-	-
	1960..	798	11	192	272	194	129	-
7 tracts	farms	28	4	19	2	3	-	-
	1960..	54	6	37	11	-	-	-
acres	1970..	222	7	110	24	81	-	-
	1960..	372	12	217	143	-	-	-
8 tracts or more	farms	18	1	4	11	2	-	-
	1960..	59	5	27	21	4	2	-
acres	1970..	206	2	23	131	50	-	-
	1960..	609	10	135	268	93	103	-
Not reporting number of tracts	farms	34	16	16	1	1	-	-
	1960..	289	122	118	30	16	1	2
acres	1970..	135	22	70	14	29	-	-
	1960..	2,257	214	570	369	396	50	658

Table 3. Farms, Land in Farms, by Tenure of Operator: 1970 and 1960

		Total	Full owners	Part owners	Tenants	Number of tracts:					
		Total	Full owners	Part owners	Tenants	Total	Full owners	Part owners	Tenants		
Land owned	farms	1970.. 1,659	1,597	62	-	1 tract	farms	1970.. 979	804	6	169
	1960.. 1,819	1,711	108	-	1960.. 762		612	10	140		
	acres	1970.. 9,191	8,944	247	-		acres	1970.. 4,215	3,398	53	764
	1960.. 11,303	10,764	539	-	1960.. 2,515		2,102	44	369		
Land owned by Matai	farms	1970.. 1,516	1,469	47	-	2 tracts	farms	1970.. 535	435	32	68
	1960.. 1,673	1,578	95	-	1960.. 411		342	20	49		
	acres	1970.. 8,166	7,997	169	-		acres	1970.. 2,997	2,496	233	268
	1960.. 9,473	8,986	487	-	1960.. 1,791		1,506	121	164		
Land owned by non-Matai	farms	1970.. 143	128	15	-	3 tracts	farms	1970.. 153	127	7	19
	1960.. 146	133	13	-	1960.. 230		189	9	32		
	acres	1970.. 1,025	947	78	-		acres	1970.. 957	834	36	87
	1960.. 1,830	1,778	52	-	1960.. 1,229		1,016	66	147		
Land rented from others	farms	1970.. 328	-	61	267	4 tracts	farms	1970.. 90	80	3	7
	1960.. 424	-	108	316	1960.. 158		127	12	19		
	acres	1970.. 1,416	-	200	1,216		acres	1970.. 903	820	12	71
	1960.. 1,380	-	260	1,120	1960.. 1,058		852	98	108		
Land rented from Matai	farms	1970.. 309	-	53	256	5 tracts	farms	1970.. 44	37	4	3
	1960.. 369	-	97	272	1960.. 105		89	10	6		
	acres	1970.. 1,357	-	183	1,174		acres	1970.. 357	318	21	18
	1960.. 1,207	-	218	989	1960.. 892		775	81	36		
Land rented from non-Matai	farms	1970.. 19	-	8	11	6 tracts	farms	1970.. 42	37	5	-
	1960.. 55	-	11	44	1960.. 67		54	10	3		
	acres	1970.. 59	-	17	42		acres	1970.. 417	355	62	-
	1960.. 173	-	42	131	1960.. 798		686	78	34		
Land rented to others	farms	1970.. 45	43	-	2	7 tracts	farms	1970.. 28	26	2	-
	1960.. 132	107	20	5	1960.. 54		40	8	6		
	acres	1970.. 198	193	-	5		acres	1970.. 222	206	16	-
	1960.. 1,162	1,104	47	11	1960.. 372		241	65	66		
Not reporting number of tracts	farms	1970.. 34	32	1	1	8 tracts or more	farms	1970.. 18	17	1	-
	1960.. 289	208	22	59	1960.. 59		50	7	2		
	acres	1970.. 135	129	3	3		acres	1970.. 206	195	11	-
	1960.. 2,257	1,957	127	173	1960.. 609		525	72	12		

Table 4. Summary, by Size of Farm: 1970 and 1960
(Off-farm work, crops harvested, and poultry sales data are for the years 1969 and 1959)

		Total	Under 3 acres	3 to 9 acres	10 to 19 acres	20 to 49 acres	50 to 99 acres	100 acres and over
Farms, Land in Farms								
Farms	number	1970.. 1,923	976	772	74	92	5	4
		1960.. 2,135	853	1,043	174	51	8	6
Percent distribution		1970.. 100.0	50.8	40.1	3.8	4.8	0.3	0.2
		1960.. 100.0	40.0	48.8	8.1	2.4	0.4	0.3
Land in farms	acres	1970.. 10,409	1,598	3,815	988	2,154	354	1,500
		1960.. 11,521	1,386	5,017	2,131	1,369	460	1,158
Percent distribution		1970.. 100.0	15.4	36.6	9.5	20.7	3.4	14.4
		1960.. 100.0	12.0	43.5	18.5	11.9	4.0	10.1
Average size of farm	acres	1970.. 5.4	1.6	4.9	13.4	23.4	70.8	375.0
		1960.. 5.4	1.6	4.8	12.2	26.8	57.5	193.0
Land Use, 1970								
Land in crops	farms..	1,917	971	772	74	92	4	4
	acres..	5,722	1,223	2,389	475	623	100	912
Other cropland	farms..	716	220	352	56	81	4	3
	acres..	1,850	136	592	209	653	90	170
Pastureland	farms..	303	84	146	24	45	2	2
	acres..	636	50	187	66	216	27	90
Other land	farms..	797	260	385	58	86	5	3
	acres..	2,201	189	647	238	662	137	328
Tenure of Farm Operators								
Full owners	number	1970.. 1,595	802	645	60	80	5	3
		1960.. 1,711	674	839	137	47	8	6
	acres	1970.. 8,751	1,317	3,189	801	1,890	354	1,200
		1960.. 9,660	1,085	4,001	1,684	1,272	460	1,158
Part owners	number	1970.. 61	10	38	8	5	-	-
		1960.. 108	13	73	20	2	-	-
	acres	1970.. 447	23	207	102	115	-	-
		1960.. 752	28	426	248	50	-	-
Tenants	number	1970.. 267	164	89	6	7	-	1
		1960.. 316	166	131	17	2	-	-
	acres	1970.. 1,211	258	419	85	149	-	300
		1960.. 1,109	273	590	199	47	-	-
Off-Farm Work, 1970								
Farm operators working off their farm		1,699	859	681	61	90	5	3
1 to 99 days		551	276	212	27	32	2	2
100 days or more		1,148	583	469	34	58	3	1
100 to 199 days		651	373	237	16	25	-	-
200 days or more		497	210	232	18	33	3	1
Farm operators not working off their farm		104	63	36	3	1	-	1
Farm operators not reporting as to work off their farms		120	54	55	10	1	-	-
Vegetables and Field Crops Harvested								
Taro	farms	1970.. 1,759	857	731	72	90	5	4
		1960.. 2,022	781	1,011	168	50	7	5
	acres	1970.. 1,276	348	616	192	100	10	10
		1960.. 627	162	330	65	40	21	9
	roots	1970.. 8,274,564	2,454,222	4,355,342	627,500	689,600	56,100	91,800
		1960.. 3,669,985	968,276	1,918,507	430,582	203,840	81,780	67,000
Yams	farms	1970.. 633	254	298	35	42	4	-
		1960.. 858	226	484	110	30	4	4
	acres	1970.. 56	7	36	11	2	(Z)	-
		1960.. 2	(Z)	2	(Z)	(Z)	(Z)	(Z)
	roots	1970.. 132,805	40,491	78,126	12,340	1,753	95	-
		1960.. 19,987	4,429	11,114	2,969	1,110	290	75
Sweetpotatoes	farms	1970.. 31	15	13	-	2	-	1
		1970.. 1	(Z)	1	-	(Z)	-	(Z)
	roots	1970.. 11,589	2,655	8,634	-	100	-	200
Cassava	farms	1970.. 106	62	35	2	7	-	-
		1970.. 2	(Z)	2	(Z)	(Z)	-	-
	roots	1970.. 13,138	6,534	6,060	308	236	-	-
Giant taro	farms	1970.. 1,152	544	486	48	69	4	1
		1970.. 134	32	75	16	11	(Z)	(Z)
	roots	1970.. 407,569	112,199	223,126	23,665	44,679	1,900	2,000
Arrowroot	farms	1970.. 109	48	43	4	13	1	-
		1970.. 23	5	14	(Z)	4	(Z)	-
	roots	1970.. 30,693	10,676	13,512	1,510	4,945	50	-

Table 4. Summary, by Size of Farm: 1970 and 1960—Continued
 (Off-farm work, crops harvested, and poultry sales data are for the years 1969 and 1959)

	Total	Under 3 acres	3 to 9 acres	10 to 19 acres	20 to 49 acres	50 to 99 acres	100 acres and over
Vegetables and Field Crops Harvested — Continued							
Tobacco							
farms 1970..	23	8	11	1	3	-	-
acres 1970..	1	(2)	1	(2)	(2)	-	-
plants 1970..	5,187	253	4,603	1	330	-	-
Sugar cane for thatching							
farms 1970..	289	147	113	16	10	3	-
1960..	987	273	585	93	28	5	3
acres 1970..	46	4	27	11	3	1	-
1960..	93	22	63	5	3	(2)	(2)
plants 1970..	146,987	18,086	89,491	19,024	15,335	5,051	-
1960..	291,263	59,065	153,794	70,082	6,802	920	600
Fruits, Nuts, and Tree Crops							
Avocados							
farms 1970..	247	114	96	10	26	1	-
1960..	350	86	198	42	17	3	4
trees 1970..	723	218	398	37	69	1	-
1960..	1,284	474	519	156	77	39	19
pounds 1970..	22,791	8,094	11,837	605	2,155	100	-
1960..	37,080	5,920	19,030	5,295	3,235	3,060	540
Bananas							
farms 1970..	1,873	943	758	73	91	5	3
1960..	2,076	814	1,029	170	50	7	6
hills or clumps 1970..	735,956	264,798	382,362	39,012	46,134	2,750	900
1960..	970,233	247,666	472,830	161,545	62,592	21,600	4,000
pounds 1970..	4,211,294	1,324,974	2,190,235	310,370	356,465	26,250	3,000
1960..	7,943,175	2,496,473	3,545,844	1,145,247	542,481	176,050	37,080
Breadfruits							
farms 1970..	1,810	909	732	72	89	5	3
1960..	2,035	794	1,009	171	48	8	5
trees 1970..	161,705	52,476	85,863	11,431	10,822	438	675
1960..	155,303	39,390	74,773	28,029	9,692	559	2,860
pounds 1970..	2,944,749	1,031,457	1,516,702	154,300	223,170	8,120	11,000
1960..	4,075,620	1,328,931	2,075,592	491,750	155,927	17,540	5,880
Cacao							
farms 1970..	231	120	91	10	9	1	-
1960..	880	216	487	126	42	6	3
trees 1970..	10,674	4,524	5,200	389	391	170	-
1960..	115,654	14,636	53,152	23,443	18,575	3,488	2,360
pounds 1970..	53,359	10,327	37,882	1,820	3,230	100	-
1960..	128,508	8,812	71,610	25,621	19,868	1,647	950
Citrons							
farms 1970..	14	6	6	2	-	-	-
1960..	20	7	11	2	-	-	-
trees 1970..	214	55	109	50	-	-	-
1960..	3,529	906	1,123	1,500	-	-	-
pounds 1970..	503	168	40	295	-	-	-
1960..	15,070	3,860	5,410	5,800	-	-	-
Coconuts							
farms 1970..	1,650	799	685	74	83	5	4
1960..	1,845	635	985	164	48	7	6
trees 1970..	374,002	90,869	183,027	24,065	24,786	3,755	47,500
1960..	402,512	65,188	166,758	73,419	42,037	10,360	44,750
pounds 1970..	3,586,958	814,347	1,691,731	246,770	247,950	28,160	558,000
1960..	4,671,324	573,775	1,747,048	462,985	491,116	297,600	1,098,800
Coffee							
farms 1970..	15	6	9	-	-	-	-
trees 1970..	182	73	109	-	-	-	-
pounds 1970..	318	168	150	-	-	-	-
Grapefruits							
farms 1970..	74	21	41	4	6	2	-
1960..	89	15	47	15	8	2	2
trees 1970..	844	433	282	36	40	53	-
1960..	721	46	286	277	50	56	6
pounds 1970..	6,518	1,993	3,225	429	596	275	-
1960..	4,207	1,296	1,861	730	240	80	-
Lemons							
farms 1970..	478	214	207	23	30	4	-
1960..	418	117	220	53	21	4	3
trees 1970..	3,542	1,117	1,933	191	273	28	-
1960..	4,098	939	2,287	360	287	193	32
pounds 1970..	38,604	12,161	21,733	1,898	2,668	144	-
1960..	26,911	7,740	11,684	4,462	2,615	80	330
Limes							
farms 1970..	88	39	43	4	2	-	-
1960..	305	70	168	51	11	3	2
trees 1970..	517	181	311	22	3	-	-
1960..	2,977	380	1,669	507	107	11	303
pounds 1970..	3,484	1,067	1,847	490	80	-	-
1960..	17,627	1,815	7,648	4,703	461	-	3,000
Mangoes							
farms 1970..	586	263	257	21	41	4	-
1960..	603	216	297	66	19	2	3
trees 1970..	2,306	846	1,011	123	255	71	-
1960..	2,585	1,058	1,029	314	142	27	15
pounds 1970..	78,654	30,151	35,978	2,745	8,220	1,560	-
1960..	84,548	26,197	41,655	11,666	4,430	100	500

Table 4. Summary, by Size of Farm: 1970 and 1960—Continued
(Off-farm work, crops harvested, and poultry sales data are for the years 1969 and 1959)

		Total	Under 3 acres	3 to 9 acres	10 to 19 acres	20 to 49 acres	50 to 99 acres	100 acres and over	
Fruits, Nuts, and Tree Crops — Continued									
Oranges	farms	1970..	598	286	247	27	35	3	-
		1960..	512	174	263	55	13	3	4
	trees	1970..	6,926	2,737	3,145	551	461	32	-
		1960..	3,744	796	2,146	413	89	196	104
	pounds	1970..	67,039	21,050	32,714	5,671	6,854	750	-
		1960..	21,968	8,455	8,092	3,791	1,408	62	160
Papayas	farms	1970..	853	388	357	48	55	4	1
		1960..	843	257	451	91	34	5	5
	trees	1970..	33,385	10,180	14,782	4,580	3,508	235	100
		1960..	37,285	9,098	19,803	4,174	1,789	341	2,080
	pounds	1970..	238,529	62,748	102,580	36,835	32,696	2,670	1,000
		1960..	313,924	68,545	133,512	83,630	14,547	7,450	6,240
Pineapples	farms	1970..	469	213	200	23	30	3	0
	plants	1970..	42,692	13,560	18,801	3,760	6,111	460	0
	fruits	1970..	43,430	10,357	19,245	4,577	8,931	320	0
Livestock									
Cattle and calves	farms	1970..	15	4	7	1	2	-	1
		1960..	10	1	1	2	2	1	3
	number	1970..	246	36	24	4	62	-	120
		1960..	190	1	3	18	16	18	134
Milk cows	farms	1970..	4	-	2	1	1	-	-
		1960..	8	-	1	2	2	1	2
	number	1970..	33	-	6	2	25	-	-
		1960..	52	-	3	13	14	15	7
Other cattle and calves	farms	1970..	14	4	6	1	2	-	1
		1960..	7	1	-	2	1	1	2
	number	1970..	213	36	18	2	37	-	120
		1960..	138	1	-	5	2	3	127
Hogs and pigs	farms	1970..	1,140	557	471	49	55	5	3
		1960..	1,757	679	885	140	43	6	4
	number	1970..	7,972	3,411	3,583	370	400	148	60
		1960..	11,378	3,377	5,848	1,179	623	117	234
Horses, mules, and colts	farms	1970..	76	14	42	12	5	1	2
		1960..	88	25	36	16	7	2	2
	number	1970..	109	14	57	19	11	1	7
		1960..	116	26	46	20	9	6	9
Poultry									
Chickens	farms	1970..	1,416	676	593	62	77	4	4
		1960..	1,915	727	967	161	47	8	5
	number	1970..	41,968	14,635	22,083	1,715	2,954	157	424
		1960..	35,186	9,618	18,521	3,793	1,774	616	864
Sales of Specified Farm Products, 1970									
Chickens of all ages	farms..	42	19	17	-	4	1	1	
	number..	15,286	365	14,783	-	103	10	25	
Chicken eggs	farms..	19	4	11	1	1	1	1	
	dozens..	39,417	878	37,979	20	300	100	140	

Table 5. Summary, by Tenure of Operator: 1970 and 1960
(Off-farm work, crops harvested and poultry sales data are for the years 1969 and 1959)

		Total	Full owners	Part owners	Tenants	
Farms, Land in Farms						
Farms	number	1970..	1,923	1,595	61	267
		1960..	2,135	1,711	108	316
	Percent distribution	1970..	100.0	82.9	3.2	13.9
		1960..	100.0	80.1	5.1	14.8
Land in farms	acres	1970..	10,409	8,751	447	1,211
		1960..	11,521	9,660	752	1,109
	Percent distribution	1970..	100.0	84.0	4.3	11.7
		1960..	100.0	83.9	6.5	9.6
Average size of farm	acres	1970..	5.4	5.5	7.3	4.5
	1960..	5.4	5.6	7.0	3.5	

Table 5. Summary, by Tenure of Operator: 1970 and 1960—Continued
 (Off-farm work, crops harvested and poultry sales data are for the years 1969 and 1959)

	Total	Full owners	Part owners	Tenants
Land Use, 1970				
Land in crops farms . .	1,917	1,588	61	267
acres . .	5,722	4,855	212	655
Other cropland farms . .	716	614	34	68
acres . .	1,850	1,628	75	147
Pastureland farms . .	303	266	14	23
acres . .	636	511	33	92
Other land farms . .	797	651	49	97
acres . .	2,201	1,756	127	318
Off-Farm Work, 1970				
Farm operators working off their farm	1,699	1,403	53	242
1 to 99 days	551	440	16	95
100 days or more	1,148	963	37	148
100 to 199 days	651	544	11	96
200 days or more	497	419	26	52
Farm operators not working off their farm	104	79	5	20
Farm operators not reporting as to work off their farms	120	113	3	4
Vegetables and Field Crops Harvested				
Taro farms 1970 . .	1,759	1,455	56	248
1960 . .	2,022	1,619	105	298
acres 1970 . .	1,276	1,048	51	177
1960 . .	627	511	28	88
roots 1970 . .	8,274,564	6,774,082	443,500	1,056,982
1960 . .	3,669,985	2,876,992	161,460	631,533
Yams farms 1970 . .	633	551	23	59
1960 . .	858	709	63	86
acres 1970 . .	56	44	9	3
1960 . .	2	2	(2)	(2)
roots 1970 . .	132,805	111,990	13,279	7,536
1960 . .	19,987	17,343	1,844	800
Sweetpotatoes farms 1970 . .	31	27	2	2
acres 1970 . .	1	1	(2)	(2)
roots 1970 . .	11,589	11,129	400	60
Cassava farms 1970 . .	106	80	4	22
acres 1970 . .	2	2	(2)	(2)
roots 1970 . .	13,138	10,428	726	1,984
Giant taro farms 1970 . .	1,152	976	32	144
acres 1970 . .	134	110	4	20
roots 1970 . .	407,569	348,560	15,090	43,919
Arrowroot farms 1970 . .	109	98	4	7
acres 1970 . .	23	20	(2)	3
roots 1970 . .	30,693	25,363	240	5,090
Tobacco farms 1970 . .	23	18	4	1
acres 1970 . .	1	(2)	1	(2)
plants 1970 . .	5,187	1,047	4,090	50
Sugar cane for thatching farms 1970 . .	289	240	14	35
1960 . .	987	868	51	68
acres 1970 . .	46	37	5	4
1960 . .	93	88	1	4
plants 1970 . .	146,987	118,249	22,996	5,742
1960 . .	291,263	265,441	10,878	14,944
Fruits, Nuts, and Tree Crops				
Avocados farms 1970 . .	247	196	16	35
1960 . .	350	307	10	33
trees 1970 . .	723	594	42	87
1960 . .	1,284	895	39	350
pounds 1970 . .	22,791	18,158	1,845	2,788
1960 . .	37,080	28,367	1,270	7,443
Bananas farms 1970 . .	1,873	1,556	60	257
1960 . .	2,076	1,663	109	304
hills or clumps 1970 . .	735,956	647,762	27,162	61,032
1960 . .	970,233	674,647	63,063	232,523
pounds 1970 . .	4,211,294	3,479,749	201,620	529,925
1960 . .	7,943,175	5,518,926	450,177	1,974,072
Breadfruits farms 1970 . .	1,810	1,506	57	247
1960 . .	2,035	1,624	106	305
trees 1970 . .	161,705	144,680	5,703	11,322
1960 . .	155,303	126,398	12,538	16,367
pounds 1970 . .	2,944,749	2,498,601	113,250	332,898
1960 . .	4,075,620	3,040,610	152,678	882,332

Table 5. Summary, by Tenure of Operator: 1970 and 1960—Continued
(Off-farm work, crops harvested and poultry sales data are for the years 1969 and 1959)

	Total	Full owners	Part owners	Tenants	
Fruits, Nuts, and Tree Crops — Continued					
Cacao	farms 1970 ..	231	199	10	22
	1960 ..	880	695	76	109
trees 1970 ..		10,674	9,627	318	729
	1960 ..	115,654	94,218	8,916	12,520
pounds 1970 ..		53,359	47,339	1,090	4,930
	1960 ..	128,508	112,931	5,869	9,708
Citrons	farms 1970 ..	14	11	-	3
	1960 ..	20	15	1	4
trees 1970 ..		214	207	-	7
	1960 ..	3,529	2,103	700	726
pounds 1970 ..		503	503	-	-
	1960 ..	15,070	14,430	-	640
Coconuts	farms 1970 ..	1,650	1,368	55	227
	1960 ..	1,845	1,478	100	267
trees 1970 ..		374,002	332,473	16,955	24,574
	1960 ..	402,512	330,075	31,225	41,212
pounds 1970 ..		3,586,958	3,088,618	177,172	321,168
	1960 ..	4,671,324	4,131,167	156,546	383,611
Coffee	farms 1970 ..	15	10	1	4
	1960 ..	182	120	10	52
trees 1970 ..		318	213	40	65
	1960 ..				
Grapefruits	farms 1970 ..	74	58	4	12
	1960 ..	89	78	6	5
trees 1970 ..		844	763	19	62
	1960 ..	721	663	35	23
pounds 1970 ..		6,518	5,668	205	645
	1960 ..	4,207	3,657	100	450
Lemons	farms 1970 ..	478	391	30	57
	1960 ..	418	340	29	49
trees 1970 ..		3,542	3,029	254	259
	1960 ..	4,098	2,258	153	1,687
pounds 1970 ..		38,604	33,120	2,297	3,187
	1960 ..	26,911	20,592	1,153	5,166
Limes	farms 1970 ..	88	64	2	22
	1960 ..	305	222	2	61
trees 1970 ..		517	345	16	156
	1960 ..	2,977	1,987	667	323
pounds 1970 ..		3,484	2,622	115	747
	1960 ..	17,627	11,862	2,261	3,504
Mangoes	farms 1970 ..	586	478	33	75
	1960 ..	603	507	26	70
trees 1970 ..		2,306	1,882	174	250
	1960 ..	2,585	1,732	77	776
pounds 1970 ..		78,654	66,225	5,862	6,567
	1960 ..	84,548	56,778	3,875	23,895
Oranges	farms 1970 ..	598	497	31	70
	1960 ..	512	451	33	28
trees 1970 ..		6,926	6,252	331	343
	1960 ..	3,744	3,243	287	214
pounds 1970 ..		67,039	60,770	2,589	3,680
	1960 ..	21,968	20,222	989	757
Papayas	farms 1970 ..	853	680	39	134
	1960 ..	843	697	53	93
trees 1970 ..		33,385	28,037	1,030	4,318
	1960 ..	37,285	30,600	2,541	4,144
pounds 1970 ..		238,529	204,171	8,661	25,697
	1960 ..	313,924	221,129	23,632	69,163
Pineapples	farms 1970 ..	469	374	19	76
	1960 ..	42,692	34,247	2,465	5,980
plants 1970 ..					
	1960 ..				
fruits 1970 ..		43,430	35,987	2,300	5,143
	1960 ..				
Livestock					
Cattle and calves	farms 1970 ..	15	12	1	2
	1960 ..	10	9	1	-
number 1970 ..		246	120	1	125
	1960 ..	190	187	3	-
Milk cows	farms 1970 ..	4	4	-	-
	1960 ..	8	7	1	-
number 1970 ..		33	33	-	-
	1960 ..	52	51	1	-
Other cattle and calves	farms 1970 ..	14	11	1	2
	1960 ..	7	6	1	-
number 1970 ..		213	87	1	25
	1960 ..	138	136	2	-

Table 5. Summary, by Tenure of Operator: 1970 and 1960—Continued
 (Off-farm work, crops harvested and poultry sales data are for the years 1969 and 1959)

		Total	Full owners	Part owners	Tenants
Livestock — Continued					
Hogs and pigs	farms 1970..	1,140	967	32	141
	1960..	1,757	1,445	94	218
	number 1970..	7,972	6,864	208	902
	1960..	11,378	9,463	677	1,238
Horses, mules, and colts	farms 1970..	76	47	4	25
	1960..	88	77	1	10
	number 1970..	109	66	5	38
	1960..	116	102	1	13
Poultry					
Chickens	farms 1970..	1,416	1,189	46	181
	1960..	1,915	1,549	107	259
	number 1970..	41,968	35,446	1,205	5,317
	1960..	35,186	28,398	2,356	4,432
Sales of Specified Farm Products, 1970					
Chickens of all ages	farms..	42	36	2	4
	number..	15,286	15,046	100	140
Chicken eggs	farms..	19	15	1	3
	dozens..	39,417	39,069	24	324

Table 6. Vegetables and Field Crops: 1970, 1960, and 1950

(Crops harvested data are for the years 1969, 1959, and 1949)

		1970	1960	1950
Arrowroot	farms..	109	170	101
	acres..	23	29	20
	roots..	30,693	26,899	(NA)
Cassava	farms..	106	123	(NA)
	acres..	2	1	(NA)
	roots..	13,138	22,609	(NA)
Giant taro	farms..	1,152	1,097	(NA)
	acres..	134	53	(NA)
	roots..	407,569	257,070	(NA)
Sugar cane for thatching	farms..	289	987	537
	acres..	46	93	118
	plants..	146,987	255,263	(NA)
Sweetpotatoes	farms..	31	341	24
	acres..	1	3	4
	roots..	11,589	168,004	(NA)
Taro	farms..	1,759	2,022	1,430
	acres..	1,276	627	1,576
	roots..	8,274,564	3,669,985	(NA)
Tobacco	farms..	23	111	40
	acres..	1	10	13
	plants..	5,187	18,154	(NA)
Yams	farms..	633	858	224
	acres..	56	2	59
	roots..	132,805	19,987	(NA)
Other crops	farms..	104	(NA)	(NA)
	acres..	6	(NA)	(NA)

Table 7. Fruits and Nuts: 1970, 1960, and 1950
(Crops harvested data are for the years 1969, 1959, and 1949)

	1970	1960	1950		1970	1960	1950
Avocados	farms.. 247	350	218	Grapefruits	farms.. 74	89	12
	trees.. 723	1,284	924		trees.. 844	721	78
	pounds.. 22,791	37,080	(NA)		pounds.. 6,518	4,207	(NA)
Bananas	farms.. 1,873	2,076	(NA)	Lemons	farms.. 478	418	333
	hills or clumps.. 735,956	970,233	(NA)		trees.. 3,542	4,098	2,336
	pounds.. 4,211,294	7,943,175	(NA)		pounds.. 38,604	26,911	(NA)
Breadfruits	farms.. 1,810	2,035	1,427	Limes	farms.. 88	305	422
	trees.. 161,705	155,303	637,408		trees.. 517	2,977	2,304
	pounds.. 2,944,749	4,075,620	(NA)		pounds.. 3,484	17,627	(NA)
Cacao	farms.. 231	880	41	Mangoes	farms.. 586	603	445
	trees.. 10,674	115,654	3,172		trees.. 2,306	2,585	2,152
	pounds.. 53,359	128,508	(NA)		pounds.. 78,654	84,548	(NA)
Citrons	farms.. 14	20	(NA)	Oranges	farms.. 598	512	605
	trees.. 214	3,529	(NA)		trees.. 6,926	3,744	5,173
	pounds.. 503	15,070	(NA)		pounds.. 67,039	21,968	(NA)
Coconuts	farms.. 1,650	1,845	(NA)	Papayas	farms.. 853	843	757
	trees.. 374,002	402,512	(NA)		trees.. 33,385	37,285	47,843
	pounds.. 3,586,958	4,671,324	(NA)		pounds.. 238,529	313,924	(NA)
Coffee	farms.. 15	52	7	Pineapples	farms.. 469	468	661
	trees.. 182	1,523	55		plants.. 42,692	(NA)	(NA)
	pounds.. 318	1,008	(NA)		fruits.. 43,430	30,981	53,601
				Other fruits	farms.. 145	(NA)	(NA)
					trees or plants.. 10,782	(NA)	(NA)

Table 8. Livestock and Poultry: 1970, 1960, and 1950

	1970	1960	1950
Cattle and calves	farms.. 15	10	11
	number.. 246	190	233
Milk cows	farms.. 4	8	6
	number.. 33	52	75
Other cattle and calves	farms.. 14	7	7
	number.. 213	138	158
Hogs and pigs	farms.. 1,140	1,757	1,201
	number.. 7,972	11,378	9,080
Horses, mules, and colts	farms.. 76	88	82
	number.. 109	116	170
Chicken of all ages	farms.. 1,416	1,915	1,337
	number.. 41,968	35,186	28,011
Other poultry	farms.. 5	(NA)	2

Table 9. Workpower Used, by Size of Farm: 1970
(Workpower data are for the year 1969)

	Total	Under 3 acres	3 to 9 acres	10 to 19 acres	20 to 49 acres	50 to 49 acres	100 acres and over
Farm operators reporting mechanical power	96	29	45	2	15	2	3
Tractors	63	20	23	2	15	2	1
Owned by—							
Operator	30	13	5	—	12	—	—
Operator and another person jointly	3	1	2	—	—	—	—
Landlord	1	—	—	—	—	—	1
Government agency	29	6	16	2	3	2	—
Other mechanical power	33	9	22	—	—	—	2
Owned by—							
Operator	24	7	17	—	—	—	—
Operator and another person jointly	2	—	1	—	—	—	1
Government agency	7	2	4	—	—	—	1
Farm operators reporting animal power	36	10	23	2	—	—	1
Owned by—							
Operator	33	8	23	2	—	—	—
Landlord	2	1	—	—	—	—	1
Government agency	1	1	—	—	—	—	—
Farm operators reporting no power used	1,796	936	707	71	77	3	2
Farm operators not reporting	7	5	2	—	—	—	—

Table 10. Workpower Used, by Tenure of Farm Operator: 1970
(Workpower data are for the year 1969)

	Total	Full owners	Part owners	Tenants
Farm operators reporting—				
Tractors	63	56	3	4
Owned by—				
Farm operator only	30	30	—	—
Farm operator and another person jointly	3	1	2	—
Landlord of farm operator	1	—	—	1
Government agency	29	25	1	3
Other mechanical power	33	30	1	2
Owned by—				
Farm operator only	24	23	1	—
Farm operator and another person jointly	2	2	—	—
Government agency	7	5	—	2
Animal power	36	31	1	4
Owned by—				
Farm operator only	33	30	1	2
Landlord of farm operator	2	—	—	2
Government agency	1	1	—	—
No power used	1,796	1,478	57	261
Farm operators not reporting	7	7	—	—

Section 2

DISTRICT AND COUNTY DATA

CONTENTS

	<i>page</i>
TABLE 11. Population, Land Area, Farms, and Land in Farms, by District and County: 1970 and 1960 -----	14
12. Farms, Land in Farms, by Land Use and by District and County: 1970 -----	14
13. Farms, Land in Farms, by Size of Farm and by District and County: 1970 and 1960 -----	15
14. Farms, Land in Farms, by Tenure of Operator and by District and County: 1970 and 1960 -----	15
15. Vegetables, Field Crops, by District and County: 1970 and 1960 -----	16
16. Fruits and Nuts, by District and County: 1970 and 1960 -----	17
17. Livestock and Poultry, by District and County: 1970 and 1960 -----	22
18. Off-Farm Work by Farm Operators, by District and County: 1970 -----	22
19. Operator Characteristics, by District and County: 1970 -----	23
20. Tracts of Land in Place, Type of Holding, by District and County: 1970 -----	23

Table 11. Population, Land Area, Farms, and Land in Farms, by District and County: 1970 and 1960

	Total population		Approximate land area, 1970		Number of farms		Land in farms, acres			
	1970	1960	Square miles ¹	Acres	1970	1960	Total		Average per farm	
							1970	1960	1970	1960
American Samoa	27,159	20,051	76.0	48,640	1,923	2,135	10,409	11,521	5.4	5.4
Manua District and Swains Island	2,186	2,801	23.0	14,720	246	306	1,839	1,695	7.5	5.5
Faleasao County	288	345	1.8	1,152	36	34	159	113	4.4	3.3
Fitiuta County	492	596	7.3	4,672	56	83	123	204	2.2	2.5
Ofu County	412	605	2.9	1,856	52	53	116	441	2.2	8.3
Olosega County	380	429	2.0	1,280	38	57	468	27	2.3	0.5
Tau County and Swains Island	614	826	9.0	5,760	64	79	973	910	15.2	11.5
Tutuila, Eastern District	15,955	11,137	25.0	16,000	933	1,124	3,340	4,922	3.6	4.4
Ituau County	2,884	1,887	6.2	3,968	240	255	934	1,955	3.9	7.7
Mauputasi County	7,886	5,340	5.7	3,648	273	485	1,294	1,530	4.7	3.2
Saole County	1,295	1,105	2.4	1,536	112	123	282	406	2.5	3.3
Sua County	2,336	1,500	6.9	4,416	150	151	447	631	3.0	4.2
Vaifanua County	1,554	1,305	3.8	2,432	158	110	383	400	2.4	3.6
Tutuila, Western District	9,018	6,113	28.0	17,920	744	705	5,230	4,904	7.0	7.0
Lealataua County	3,145	2,393	10.4	6,656	268	292	2,372	2,387	8.8	8.2
Leasina County	637	571	5.6	3,584	63	88	495	555	7.9	6.3
Tualatai County	1,565	1,008	3.4	2,176	135	98	647	772	4.8	7.9
Tualauta County	3,671	2,141	8.6	5,504	278	227	1,716	1,190	6.2	5.2

¹Areas of Bartlett, Goat, Nuu, Nuu Silaeloe, Pola, Rose, Sand, and Taputapu Islands not measured.

Table 12. Farms, Land in Farms, by Land Use and by District and County: 1970

	Total		Land in crops		Other cropland		Pastureland		All other land	
	Farms	Acres	Farms	Acres	Farms	Acres	Farms	Acres	Farms	Acres
American Samoa	1,923	10,409	1,917	5,722	716	1,850	303	636	797	2,201
Manua District and Swains Island	246	1,839	246	1,246	91	263	78	107	112	223
Faleasao County	36	159	36	61	17	45	3	11	16	42
Fitiuta County	56	123	56	92	4	4	8	8	16	19
Ofu County	52	116	52	75	-	-	41	29	19	12
Olosega County	38	468	38	172	29	158	25	58	32	80
Tau County and Swains Island	64	973	64	846	41	56	1	1	29	70
Tutuila, Eastern District	933	3,340	927	2,008	307	546	62	120	325	666
Ituau County	240	934	240	589	67	106	38	51	80	188
Mauputasi County	273	1,294	267	560	150	374	5	54	98	306
Saole County	112	282	112	229	28	20	10	3	56	30
Sua County	150	447	150	309	33	26	2	7	51	105
Vaifanua County	158	383	158	321	29	20	7	5	40	37
Tutuila, Western District	744	5,230	744	2,468	318	1,041	163	409	360	1,312
Lealataua County	268	2,372	268	839	154	670	39	156	163	707
Leasina County	63	495	63	205	36	130	21	37	33	123
Tualatai County	135	647	135	422	32	63	26	49	54	113
Tualauta County	278	1,716	278	1,002	96	178	77	167	110	369

Table 13. Farms, Land in Farms, by Size of Farm and by District and County: 1970 and 1960

	Total		Under 3 acres		3 to 9 acres		10 to 19 acres		20 to 49 acres		50 to 99 acres		100 acres and over	
	1970	1960	1970	1960	1970	1960	1970	1960	1970	1960	1970	1960	1970	1960
Number of farms														
American Samoa	1,923	2,135	976	853	772	1,043	74	174	92	51	5	8	4	6
Manua District and Swains Island	246	306	131	132	90	149	15	24	8	-	1	-	1	1
Faleasao County	36	34	17	7	15	27	4	-	-	-	-	-	-	-
Fitiuta County	56	83	43	50	13	33	-	-	-	-	-	-	-	-
Ofu County	52	53	42	-	10	38	-	15	-	-	-	-	-	-
Olosega County	38	57	2	57	23	-	4	-	8	-	1	-	-	-
Tau County and Swains Island	64	79	27	18	29	51	7	9	-	-	-	-	1	1
Tutuila, Eastern District	933	1,124	601	479	300	574	17	52	10	15	3	1	2	3
Ituau County	240	255	131	69	100	146	3	27	4	9	2	1	-	3
Mauputasi County	273	485	206	316	53	141	6	23	5	1	-	-	2	-
Saole County	112	123	66	48	46	73	-	1	-	1	-	-	-	-
Sua County	150	151	95	19	47	131	7	1	1	-	-	-	-	-
Vaifanua County	158	110	103	27	54	83	1	-	-	-	-	-	-	-
Tutuila, Western District	744	705	244	242	382	320	42	98	74	36	1	7	1	2
Lealataua County	268	292	85	52	121	158	4	62	58	17	-	2	-	1
Leasina County	63	88	10	33	40	38	7	9	6	8	-	-	-	-
Tualatai County	135	98	60	46	68	33	1	8	5	8	1	3	-	-
Tualauta County	278	227	89	111	153	91	30	19	5	3	-	2	1	1
Land in farms (acres)														
American Samoa	10,409	11,521	1,598	1,386	3,815	5,017	988	2,131	2,154	2,369	354	460	1,500	1,158
Manua District and Swains Island	1,839	1,695	229	142	439	732	208	299	209	-	54	-	700	522
Faleasao County	159	113	23	15	95	98	41	-	-	-	-	-	-	-
Fitiuta County	123	204	76	74	47	130	-	-	-	-	-	-	-	-
Ofu County	116	441	81	-	35	260	-	181	-	-	-	-	-	-
Olosega County	468	27	3	27	119	-	83	-	209	-	54	-	-	-
Tau County and Swains Island	973	910	46	26	143	244	84	118	-	-	-	-	700	522
Tutuila, Eastern District	3,340	4,922	900	796	1,273	2,641	207	1,629	255	388	205	68	500	400
Ituau County	934	1,955	197	123	426	789	31	335	125	240	155	68	-	400
Mauputasi County	1,294	1,530	306	475	254	654	74	273	110	128	50	-	500	-
Saole County	282	406	103	92	179	284	-	10	-	20	-	-	-	-
Sua County	447	631	129	45	206	575	92	11	20	-	-	-	-	-
Vaifanua County	383	400	165	61	208	339	10	-	-	-	-	-	-	-
Tutuila, Western District	5,230	4,904	469	448	2,103	1,644	573	1,203	1,690	981	95	392	300	236
Lealataua County	2,372	2,387	161	96	851	893	60	731	1,300	463	-	104	-	100
Leasina County	495	555	20	54	228	187	108	107	139	207	-	-	-	-
Tualatai County	647	772	116	91	306	152	10	120	120	231	95	178	-	-
Tualauta County	1,716	1,190	172	207	718	412	395	245	131	80	-	110	300	136

Table 14. Farms, Land in Farms, by Tenure of Operator and by District and County: 1970 and 1960

	Total farms		Total owners		Full owners		Part owners		Tenants	
	1970	1960	1970	1960	1970	1960	1970	1960	1970	1960
Number of farms										
American Samoa	1,923	2,135	1,656	1,819	1,595	1,711	61	108	267	316
Manua District and Swains Island	246	306	245	306	242	268	3	38	1	-
Faleasao County	36	34	36	34	35	32	1	2	-	-
Fitiuta County	56	83	56	83	56	83	-	-	-	-
Ofu County	52	53	51	53	51	38	-	15	1	-
Olosega County	38	57	38	57	36	57	2	-	-	-
Tau County and Swains Island	64	79	64	79	64	58	-	21	-	-
Tutuila, Eastern District	933	1,124	823	958	798	943	25	15	110	166
Ituau County	240	255	238	222	230	212	8	10	2	33
Mauputasi County	273	485	205	352	198	347	7	5	68	133
Saole County	112	123	94	123	93	123	1	-	18	-
Sua County	150	151	128	151	119	151	9	-	22	-
Vaifanua County	158	110	158	110	158	110	-	-	-	-
Tutuila, Western District	744	705	588	555	555	500	33	55	156	150
Lealataua County	268	292	237	217	223	185	14	32	31	75
Leasina County	63	88	57	66	54	46	3	20	6	22
Tualatai County	135	98	99	64	97	62	2	2	36	34
Tualauta County	278	227	195	208	181	207	14	1	83	19

Table 14. Farms, Land in Farms, by Tenure of Operator and by District and County: 1970 and 1960-Continued

	Total farms		Total owners		Full owners		Part owners		Tenants	
	1970	1960	1970	1960	1970	1960	1970	1960	1970	1960
	Land in farms (acres)									
American Samoa	10,409	11,521	9,198	10,412	8,751	9,660	447	752	1,211	1,109
Manua District and Swains Island	1,839	1,695	1,837	1,695	1,785	1,409	52	286	2	-
Faleasao County	159	113	159	113	148	107	11	6	-	-
Fitiuta County	123	204	123	204	123	204	-	-	-	-
Ofu County	116	441	114	441	114	299	-	142	2	-
Olosega County	468	27	468	27	427	27	41	-	-	-
Tau County and Swains Island	973	910	973	910	973	772	-	138	-	-
Tutuila, Eastern District	3,340	4,922	3,152	4,443	3,031	4,379	121	64	188	479
Ituau County	934	1,955	928	1,832	886	1,787	42	45	6	123
Mauputasi County	1,294	1,530	1,194	1,174	1,143	1,155	51	19	100	356
Saole County	282	406	250	406	248	406	2	-	32	-
Sua County	447	631	397	631	371	631	26	-	50	-
Vaifanua County	383	400	383	400	383	400	-	-	-	-
Tutuila, Western District	5,230	4,904	4,209	4,274	3,935	3,872	274	402	1,021	630
Lealataua County	2,372	2,387	2,143	2,021	2,011	1,757	132	264	229	366
Leasina County	495	555	450	511	400	402	50	109	45	44
Tualatai County	647	772	521	630	511	605	10	25	126	142
Tualauta County	1,716	1,190	1,095	1,112	1,013	1,108	82	4	621	78

Table 15. Vegetables, Field Crops, by District and County: 1970 and 1960

(Crops harvested data are for the years 1969 and 1959)

	Farms		Acres harvested		Roots or plants harvested		Farms		Acres harvested		Roots or plants harvested	
	1970	1960	1970	1960	1970	1960	1970	1960	1970	1960	1970	1960
	Arrowroot											
American Samoa	109	170	23	29	30,693	26,899	106	123	2	1	13,138	22,609
Manua District and Swains Island	10	24	4	3	4,511	2,030	2	44	(Z)	(Z)	110	8,615
Faleasao County	-	-	-	-	-	-	1	-	(Z)	-	50	-
Fitiuta County	-	-	-	-	-	-	-	-	-	-	-	-
Ofu County	1	-	(Z)	-	300	-	1	-	(Z)	-	60	-
Olosega County	9	24	4	3	4,211	2,030	-	44	-	(Z)	-	8,615
Tau County and Swains Island	-	-	-	-	-	-	-	-	-	-	-	-
Tutuila, Eastern District	60	80	13	9	15,494	14,327	68	53	(Z)	1	9,681	8,037
Ituau County	26	19	1	(Z)	1,366	3,503	8	52	(Z)	1	1,953	8,005
Mauputasi County	6	33	(Z)	6	567	6,782	37	1	(Z)	(Z)	3,338	32
Saole County	6	4	(Z)	1	650	1,411	-	-	-	-	-	-
Sua County	22	21	12	2	12,911	2,271	17	-	(Z)	-	3,690	-
Vaifanua County	-	3	-	(Z)	-	360	6	-	(Z)	-	700	-
Tutuila, Western District	39	66	6	17	10,688	10,542	36	26	2	(Z)	3,347	5,957
Lealataua County	24	16	1	1	2,822	2,482	31	24	(Z)	(Z)	1,314	5,468
Leasina County	-	-	-	-	-	-	-	-	-	-	-	-
Tualatai County	5	15	2	11	2,350	5,187	2	-	1	-	1,800	-
Tualauta County	10	35	3	5	5,516	2,873	3	2	1	(Z)	233	489
	Giant taro											
American Samoa	1,152	1,097	134	53	407,569	257,070	289	987	46	93	146,987	255,263
Manua District and Swains Island	210	212	6	1	41,263	15,128	56	216	16	3	84,953	42,309
Faleasao County	33	12	(Z)	(Z)	2,715	181	7	33	(Z)	(Z)	750	5,839
Fitiuta County	40	71	(Z)	(Z)	2,765	5,384	23	63	(Z)	1	2,285	11,657
Ofu County	48	48	1	1	2,840	6,638	1	-	(Z)	-	100	-
Olosega County	35	53	4	(Z)	27,575	2,438	25	53	16	1	81,818	12,460
Tau County and Swains Island	54	28	1	(Z)	5,368	487	-	67	-	1	-	12,353
Tutuila, Eastern District	503	582	52	43	181,094	191,421	141	449	7	72	25,229	138,089
Ituau County	179	222	16	11	55,613	97,450	41	141	1	9	975	36,398
Mauputasi County	116	228	9	22	31,828	65,445	54	27	1	5	2,407	6,656
Saole County	56	20	7	3	12,250	4,312	5	70	1	16	2,098	21,617
Sua County	96	61	13	3	51,788	8,267	23	135	3	32	17,617	57,511
Vaifanua County	56	51	7	4	29,615	15,947	18	76	1	10	2,132	15,907
Tutuila, Western District	439	303	76	9	185,212	50,521	92	322	23	18	36,805	74,865
Lealataua County	177	240	13	3	42,131	37,982	12	195	(Z)	8	4,170	51,536
Leasina County	13	-	(Z)	-	2,660	-	-	12	-	1	-	2,780
Tualatai County	89	-	13	-	28,915	-	8	15	3	(Z)	4,481	3,285
Tualauta County	160	63	50	6	111,506	12,539	72	100	20	9	28,154	17,264
	Sugarcane for thatching											

Table 15. Vegetables, Field Crops, by District and County: 1970 and 1960—Continued
(Crops harvested data are for the years 1969 and 1959)

	Farms		Acres harvested		Roots or plants harvested		Farms		Acres harvested		Roots or plants harvested	
	1970	1960	1970	1960	1970	1960	1970	1960	1970	1960	1970	1960
	Sweetpotatoes						Taro					
American Samoa	31	341	1	3	11,589	168,004	1,759	2,022	1,276	627	8,274,564	3,669,985
Manua District and Swains Island	2	253	(Z)	2	250	128,775	245	298	198	23	908,110	236,696
Faleasao County	-	19	-	(Z)	-	18,269	36	34	27	3	130,000	25,325
Fitiuta County	-	70	-	(Z)	-	6,678	55	82	35	7	143,000	87,534
Ofu County	-	43	-	(Z)	-	6,813	52	51	36	2	110,700	41,523
Olosega County	1	48	(Z)	1	50	11,098	38	57	35	4	276,410	20,790
Tau County and Swains Island	1	73	(Z)	1	200	85,917	64	74	65	7	248,000	61,524
Tutuila, Eastern District	23	31	1	(Z)	9,068	6,641	791	1,029	361	280	3,026,629	1,777,531
Ituau County	6	7	(Z)	(Z)	164	1,290	227	218	90	57	746,543	473,678
Mauputasi County	3	1	(Z)	(Z)	650	1,949	225	446	84	107	673,917	742,162
Saole County	1	4	(Z)	(Z)	25	710	94	115	46	50	308,662	245,205
Sua County	11	18	1	(Z)	8,129	2,672	135	150	89	55	803,919	263,748
Vaifanua County	2	1	(Z)	(Z)	100	20	110	100	52	11	493,588	52,738
Tutuila, Western District	6	57	(Z)	1	2,271	32,588	723	695	717	324	4,339,825	1,655,758
Lealataua County	2	8	(Z)	(Z)	11	1,078	255	286	109	134	691,540	648,396
Leasina County	-	7	-	(Z)	-	438	62	87	79	8	582,100	38,628
Tualatai County	3	1	(Z)	1	2,210	28,640	133	97	97	109	955,110	536,253
Tualauta County	1	41	(Z)	(Z)	50	2,432	273	225	432	73	2,111,075	432,481
	Tobacco						Yams					
American Samoa	23	111	1	10	5,187	18,154	633	858	56	2	132,805	19,987
Manua District and Swains Island	8	29	(Z)	2	683	2,893	153	193	1	(Z)	5,734	11,624
Faleasao County	-	1	-	(Z)	-	40	31	29	(Z)	(Z)	890	1,018
Fitiuta County	3	9	(Z)	1	250	1,454	13	54	(Z)	(Z)	282	4,512
Ofu County	1	10	(Z)	(Z)	100	1,135	37	44	1	(Z)	2,710	2,407
Olosega County	4	7	(Z)	1	333	114	33	28	(Z)	(Z)	1,183	968
Tau County and Swains Island	-	2	-	(Z)	-	150	39	38	(Z)	(Z)	669	2,719
Tutuila, Eastern District	9	55	(Z)	6	393	11,977	210	246	2	1	7,133	2,907
Ituau County	1	6	(Z)	(Z)	60	260	98	122	(Z)	1	1,606	1,587
Mauputasi County	2	1	(Z)	(Z)	31	100	40	10	1	(Z)	947	159
Saole County	-	-	-	-	-	-	11	14	(Z)	(Z)	667	133
Sua County	5	46	(Z)	6	292	10,987	48	66	1	(Z)	3,686	806
Vaifanua County	1	2	(Z)	(Z)	10	630	13	34	(Z)	(Z)	227	222
Tutuila, Western District	6	27	1	2	4,111	3,284	270	419	53	1	119,938	5,456
Lealataua County	3	6	(Z)	(Z)	61	690	99	189	1	(Z)	3,817	2,629
Leasina County	1	9	(Z)	1	50	390	5	57	(Z)	(Z)	1,610	438
Tualatai County	-	1	-	(Z)	-	400	24	14	2	(Z)	7,342	690
Tualauta County	2	11	1	1	4,000	1,804	142	159	50	1	107,169	1,699

Table 16. Fruits and Nuts, by District and County: 1970 and 1960
(Crops harvested data are for the years 1969 and 1959)

	Trees, plants, hills or clumps, all ages				Planted since 1965		Quantity harvested			
	Farms reporting		Number		Farms reporting	Number	Farms reporting		Pounds	
	1970	1960	1970	1960	1970	1960	1970	1960	1970	1960
	Avocados									
American Samoa	247	350	723	1,284	44	164	209	168	22,791	37,080
Manua District and Swains Island	9	6	32	10	-	-	9	-	520	-
Faleasao County	-	-	-	-	-	-	-	-	-	-
Fitiuta County	-	-	-	-	-	-	-	-	-	-
Ofu County	2	-	4	-	-	-	2	-	30	-
Olosega County	3	6	12	10	-	-	3	-	400	-
Tau County and Swains Island	4	-	16	-	-	-	4	-	90	-
Tutuila, Eastern District	122	192	297	548	18	51	108	85	9,030	12,919
Ituau County	45	87	113	259	2	2	45	57	2,652	8,174
Mauputasi County	35	23	86	54	1	2	21	19	2,825	3,425
Saole County	17	10	50	29	8	28	17	1	2,244	160
Sua County	16	56	21	185	1	2	16	-	627	-
Vaifanua County	9	16	27	21	6	17	9	8	682	1,160
Tutuila, Western District	116	152	394	726	26	113	92	83	13,241	24,161
Lealataua County	55	93	193	269	6	42	49	57	7,374	20,489
Leasina County	5	1	27	3	-	-	5	1	290	240
Tualatai County	32	19	82	334	7	20	22	16	3,535	1,934
Tualauta County	24	39	92	120	13	51	16	9	2,042	1,498

Table 16. Fruits and Nuts, by District and County: 1970 and 1960—Continued
(Crops harvested data are for the years 1969 and 1959)

	Trees, plants, hills or clumps, all ages				Planted since 1965		Quantity harvested			
	Farms reporting		Number		Farms reporting	Number	Farms reporting		Pounds	
	1970	1960	1970	1960	1970	1970	1970	1960	1970	1960
Citrons--Continued										
Tutuila, Eastern District	9	6	166	367	1	1	6	3	383	2,230
Ituau County	7	2	164	190	-	-	5	2	378	250
Mauputasi County	1	-	1	-	-	-	-	-	-	-
Saole County	-	-	-	-	-	-	-	-	-	-
Sua County	1	4	1	177	1	1	1	1	5	1,980
Vaifanua County	-	-	-	-	-	-	-	-	-	-
Tutuila, Western District	5	7	48	2,827	4	48	3	5	120	8,380
Lealataua County	-	6	-	2,207	-	-	-	4	-	7,980
Leasina County	-	1	-	620	-	-	-	1	-	400
Tualatai County	-	-	-	-	-	-	-	-	-	-
Tualauta County	5	-	48	-	4	48	3	-	120	-
Coconuts										
American Samoa	1,650	1,845	374,002	402,512	483	59,803	1,618	1,644	3,586,958	4,671,324
Manua District and Swains Island	236	283	125,674	109,561	70	7,266	236	227	1,070,531	1,318,143
Faleasao County	34	34	5,437	10,047	-	-	34	33	36,130	38,906
Fitiuta County	55	71	10,610	6,226	-	-	55	71	11,551	174,946
Ofu County	52	53	37,595	28,531	52	1,936	52	53	138,200	55,919
Olosega County	36	57	21,180	11,370	17	2,330	36	10	193,600	510
Tau County and Swains Island	59	68	50,852	53,387	1	3,000	59	60	691,050	1,047,862
Tutuila, Eastern District	744	894	118,972	75,575	137	10,620	716	840	844,559	1,554,032
Ituau County	199	249	57,154	38,894	21	1,550	199	228	273,777	331,279
Mauputasi County	199	271	20,546	14,029	25	1,665	173	266	106,010	401,511
Saole County	67	117	9,045	6,141	14	2,200	67	117	156,610	207,752
Sua County	134	148	9,654	10,885	30	1,371	133	124	120,522	430,740
Vaifanua County	145	109	22,573	5,626	47	3,834	144	105	187,640	182,750
Tutuila, Western District	670	668	129,356	217,376	276	41,917	666	577	1,671,868	1,799,149
Lealataua County	249	286	32,496	116,325	58	6,059	248	260	307,321	773,782
Leasina County	35	83	6,675	24,531	15	1,110	35	82	76,550	130,145
Tualatai County	122	84	16,254	14,598	44	8,437	120	79	360,362	480,137
Tualauta County	264	215	73,931	61,922	159	26,311	263	156	927,635	415,085
Coffee										
American Samoa	15	52	182	1,523	8	107	10	12	318	1,008
Manua District and Swains Island	1	12	1	128	-	-	1	3	1	40
Faleasao County	-	2	-	4	-	-	-	1	-	5
Fitiuta County	1	1	1	28	-	-	1	1	1	20
Ofu County	-	-	-	-	-	-	-	-	-	-
Olosega County	-	-	-	-	-	-	-	-	-	-
Tau County and Swains Island	-	9	-	96	-	-	-	1	-	15
Tutuila, Eastern District	6	14	97	266	2	31	6	6	250	353
Ituau County	3	10	36	75	-	-	3	4	105	199
Mauputasi County	-	1	-	7	-	-	-	1	-	10
Saole County	-	-	-	-	-	-	-	-	-	-
Sua County	1	2	10	174	-	-	1	1	40	144
Vaifanua County	2	1	51	10	2	31	2	-	105	-
Tutuila, Western District	8	26	84	1,129	6	76	3	3	67	615
Lealataua County	-	23	-	762	-	-	-	3	-	215
Leasina County	1	-	2	-	-	-	1	-	30	-
Tualatai County	-	1	-	120	-	-	-	-	-	-
Tualauta County	7	2	82	247	6	76	2	-	37	400
Grapefruits										
American Samoa	74	89	844	721	23	190	56	34	6,518	4,207
Manua District and Swains Island	2	2	13	7	2	5	2	1	100	150
Faleasao County	-	-	-	-	-	-	-	-	-	-
Fitiuta County	-	-	-	-	-	-	-	-	-	-
Ofu County	2	-	13	-	2	5	2	-	100	-
Olosega County	-	-	-	-	-	-	-	-	-	-
Tau County and Swains Island	-	2	-	7	-	-	-	1	-	150
Tutuila, Eastern District	23	56	506	326	3	50	20	23	3,086	2,331
Ituau County	4	32	252	91	-	-	4	18	778	1,501
Mauputasi County	12	4	164	14	1	30	9	4	1,053	230
Saole County	1	-	50	-	1	10	1	-	300	-
Sua County	6	20	40	221	1	10	6	1	955	600
Vaifanua County	-	-	-	-	-	-	-	-	-	-
Tutuila, Western District	49	31	325	388	18	135	34	10	3,332	1,726
Lealataua County	9	27	25	289	2	6	8	9	1,200	1,546
Leasina County	9	1	45	5	-	-	9	-	825	-
Tualatai County	14	2	105	42	1	3	14	1	1,137	180
Tualauta County	17	1	150	52	15	126	3	-	170	-

Table 16. Fruits and Nuts, by District and County: 1970 and 1960—Continued

(Crops harvested data are for the years 1969 and 1959)

	Trees, plants, hills or clumps, all ages				Planted since 1965		Quantity harvested			
	Farms reporting		Number		Farms reporting	Number	Farms reporting		Pounds	
	1970	1960	1970	1960	1970	1970	1970	1960	1970	1960
Lemons										
American Samoa	478	418	3,542	4,098	97	637	437	214	38,604	26,911
Manua District and Swains Island	57	40	1,349	367	16	158	57	28	8,374	2,549
Faleasao County	9	1	131	45	-	-	9	1	1,205	120
Fitiuta County	16	-	152	-	-	-	16	-	1,079	-
Ofu County	17	2	160	4	15	148	17	2	690	150
Olosega County	14	24	456	165	1	10	14	24	2,400	2,179
Tau County and Swains Island	1	13	450	153	-	-	1	1	3,000	100
Tutuila, Eastern District	221	239	1,193	1,575	48	198	211	126	14,162	16,120
Ituau County	64	169	229	699	4	11	63	99	1,805	12,371
Mauputasi County	54	45	214	730	1	2	45	27	2,168	3,749
Saole County	22	-	92	-	16	65	24	-	2,040	-
Sua County	57	25	427	146	13	46	56	-	5,405	-
Vaifanua County	24	-	231	-	14	74	23	-	2,744	-
Tutuila, Western District	200	139	1,000	2,156	33	281	169	60	16,068	8,242
Lealataua County	55	107	200	541	3	9	51	44	4,575	7,701
Leasina County	17	1	84	10	2	2	17	-	1,412	-
Tualatai County	25	4	111	79	9	31	24	2	3,805	213
Tualauta County	103	27	605	1,526	19	239	77	14	6,276	328
Limes										
American Samoa	88	305	517	2,977	50	317	59	150	3,484	17,627
Manua District and Swains Island	3	11	25	73	1	2	3	9	105	2,408
Faleasao County	-	-	-	-	-	-	-	-	-	-
Fitiuta County	2	1	10	8	-	-	2	1	55	7
Ofu County	1	8	15	59	1	2	1	8	50	2,401
Olosega County	-	-	-	-	-	-	-	-	-	-
Tau County and Swains Island	-	2	-	6	-	-	-	-	-	-
Tutuila, Eastern District	26	162	89	1,693	11	34	22	82	1,402	5,825
Ituau County	8	30	46	235	4	18	7	22	480	1,930
Mauputasi County	7	74	20	1,200	-	-	4	50	380	3,475
Saole County	10	8	20	29	7	16	10	2	467	66
Sua County	-	40	-	200	-	-	-	1	-	1
Vaifanua County	1	10	3	29	-	-	1	7	75	353
Tutuila, Western District	59	132	403	1,211	38	281	34	59	1,977	9,394
Lealataua County	9	114	29	945	-	-	7	55	530	8,571
Leasina County	1	-	5	-	-	-	1	-	50	-
Tualatai County	1	1	5	144	-	-	1	1	100	130
Tualauta County	48	17	364	122	38	281	25	3	1,297	693
Mangoes										
American Samoa	586	603	2,306	2,585	120	511	552	800	78,654	84,548
Manua District and Swains Island	43	33	362	78	1	30	42	13	6,366	780
Faleasao County	4	-	23	-	-	-	4	-	125	-
Fitiuta County	22	-	46	-	-	-	21	-	1,258	-
Ofu County	-	1	-	2	-	-	-	1	-	317
Olosega County	16	16	243	40	1	30	16	9	4,783	338
Tau County and Swains Island	1	16	50	36	-	-	1	3	200	125
Tutuila, Eastern District	278	377	972	1,747	46	174	262	171	32,756	48,683
Ituau County	97	157	288	514	8	18	96	81	8,442	17,462
Mauputasi County	68	156	270	1,026	1	20	59	88	11,120	30,896
Saole County	29	7	109	16	11	42	27	-	4,670	-
Sua County	65	52	219	184	15	34	63	-	6,369	-
Vaifanua County	19	5	86	7	11	60	17	2	2,155	325
Tutuila, Western District	265	193	972	760	73	307	248	116	39,532	35,085
Lealataua County	88	132	302	526	7	33	80	76	16,748	29,894
Leasina County	21	6	97	22	4	15	21	5	2,942	337
Tualatai County	33	12	103	38	10	33	33	12	9,183	2,837
Tualauta County	123	43	470	174	52	226	114	23	10,659	2,017
Oranges										
American Samoa	598	512	6,926	3,744	147	957	545	178	67,039	21,968
Manua District and Swains Island	177	147	4,666	1,899	41	425	176	71	33,584	10,470
Faleasao County	10	17	223	137	-	-	10	1	402	25
Fitiuta County	40	12	823	94	1	20	40	12	2,852	519
Ofu County	43	7	505	70	39	305	43	7	2,405	2,028
Olosega County	27	46	902	264	1	100	26	41	11,890	5,908
Tau County and Swains Island	57	65	2,213	1,334	-	-	57	10	16,035	1,990

Table 16. Fruits and Nuts, by District and County: 1970 and 1960 --Continued
(Crops harvested data are for the years 1969 and 1959)

	Trees, plants, hills or clumps, all ages				Planted since 1965		Quantity harvested			
	Farms reporting		Number		Farms reporting	Number	Farms reporting		Pounds	
	1970	1960	1970	1960	1970	1970	1970	1960	1970	1960
Oranges--Continued										
Tutuila, Eastern District	222	231	1,131	1,034	37	172	200	64	13,839	5,540
Ituau County	77	119	325	501	7	17	76	52	2,707	4,612
Mauputasi County	46	47	233	131	1	20	27	10	3,927	603
Saole County	46	12	299	88	11	62	45	-	3,023	-
Sua County	42	42	231	284	12	51	42	-	3,565	-
Vaifanua County	11	11	43	30	6	22	10	2	617	325
Tutuila, Western District	199	134	1,129	811	69	360	169	43	19,616	5,958
Lealataua County	54	87	141	369	5	13	49	23	3,826	4,885
Leasina County	19	7	129	40	6	19	19	6	2,421	400
Tualatai County	21	2	100	12	10	49	20	1	5,770	11
Tualauta County	105	38	759	390	48	279	81	13	7,599	662
Papayas										
American Samoa	853	843	33,385	37,285	241	10,874	812	660	238,529	313,924
Manua District and Swains Island	59	115	2,678	6,539	10	495	59	115	14,613	31,890
Faleasao County	6	18	250	1,983	-	-	6	18	280	1,680
Fitiuta County	24	31	793	579	-	-	24	31	2,063	9,450
Ofu County	4	-	75	-	4	45	4	-	300	-
Olosega County	24	39	1,460	1,071	6	450	24	39	10,970	15,395
Tau County and Swains Island	1	27	100	2,906	-	-	1	27	1,000	5,365
Tutuila, Eastern District	373	305	12,781	17,977	96	3,198	352	159	80,066	31,472
Ituau County	104	134	3,702	9,490	12	593	104	129	14,972	15,900
Mauputasi County	95	31	1,742	3,009	-	-	77	27	6,738	13,874
Saole County	46	7	1,173	139	26	596	46	2	7,520	1,653
Sua County	98	129	4,621	5,261	40	1,494	96	1	44,626	45
Vaifanua County	30	4	1,543	78	18	515	29	-	6,210	-
Tutuila, Western District	421	423	17,926	12,769	135	7,181	401	386	143,850	250,562
Lealataua County	127	182	2,717	5,149	13	275	127	181	18,506	147,192
Leasina County	19	60	629	1,512	2	13	19	60	2,810	6,845
Tualatai County	81	28	2,065	749	26	537	81	26	36,791	41,355
Tualauta County	194	153	12,515	5,359	94	6,356	174	119	85,743	55,170
Pineapples										
American Samoa	469	468	42,692	(NA)	187	20,301	446	(NA)	43,430	30,981
Manua District and Swains Island	59	106	8,305	(NA)	19	4,745	59	(NA)	6,159	3,411
Faleasao County	2	21	230	(NA)	-	-	2	(NA)	60	849
Fitiuta County	30	14	2,755	(NA)	-	-	30	(NA)	937	391
Ofu County	-	6	-	(NA)	-	-	-	(NA)	-	324
Olosega County	26	36	5,270	(NA)	19	4,745	26	(NA)	5,112	292
Tau County and Swains Island	1	29	50	(NA)	-	-	1	(NA)	50	1,555
Tutuila, Eastern District	181	178	12,882	(NA)	61	4,228	169	(NA)	12,961	13,637
Ituau County	77	120	3,596	(NA)	12	544	77	(NA)	2,885	10,777
Mauputasi County	33	24	2,252	(NA)	2	140	22	(NA)	4,214	1,671
Saole County	11	2	837	(NA)	7	475	11	(NA)	713	157
Sua County	48	31	3,697	(NA)	32	2,414	48	(NA)	3,699	1,012
Vaifanua County	12	1	2,500	(NA)	8	655	11	(NA)	1,450	20
Tutuila, Western District	229	184	21,505	(NA)	107	11,328	218	(NA)	24,310	13,933
Lealataua County	61	113	3,252	(NA)	13	505	58	(NA)	2,869	8,344
Leasina County	8	14	450	(NA)	-	-	8	(NA)	335	748
Tualatai County	46	10	4,805	(NA)	17	1,198	44	(NA)	5,916	2,300
Tualauta County	114	47	12,998	(NA)	77	9,625	108	(NA)	15,190	2,541
Fruits										

Table 17. Livestock and Poultry, by District and County: 1970 and 1960

	Cattle and calves											
	Total				Milk cows				Other cattle and calves			
	Farms reporting		Number		Farms reporting		Number		Farms reporting		Number	
	1970	1960	1970	1960	1970	1960	1970	1960	1970	1960	1970	1960
American Samoa	15	10	246	190	4	8	33	52	14	7	213	138
Manua District and Swains Island	2	1	11	3	1	1	3	1	2	1	8	2
Faleasao County	-	-	-	-	-	-	-	-	-	-	-	-
Fitiuta County	-	-	-	-	-	-	-	-	-	-	-	-
Ofu County	1	-	5	-	1	-	3	-	1	-	2	-
Olosega County	-	-	-	-	-	-	-	-	-	-	-	-
Tau County and Swains Island	1	1	6	3	-	1	-	1	1	1	6	2
Tutuila, Eastern District	5	2	39	20	1	2	3	17	4	1	36	3
Ituau County	1	2	4	20	-	2	-	17	1	1	4	3
Mauputasi County	1	-	3	-	1	-	3	-	-	-	-	-
Saole County	-	-	-	-	-	-	-	-	-	-	-	-
Sua County	3	-	32	-	-	-	-	-	3	-	32	-
Vaifanua County	-	-	-	-	-	-	-	-	-	-	-	-
Tutuila, Western District	8	7	196	167	2	5	27	34	8	5	169	133
Lealataua County	2	4	26	34	-	3	-	12	2	2	26	22
Leasina County	-	-	-	-	-	-	-	-	-	-	-	-
Tualatai County	2	1	41	12	2	1	27	10	2	1	14	2
Tualauta County	4	2	129	121	-	1	-	12	4	2	129	109
	Hogs and Pigs				Horses, mules, and colts				Chickens			
	Farms reporting		Number		Farms reporting		Number		Farms reporting		Number	
	1970	1960	1970	1960	1970	1960	1970	1960	1970	1960	1970	1960
American Samoa	1,140	1,757	7,972	11,378	76	88	109	116	1,416	1,915	41,968	35,186
Manua District and Swains Island	232	276	2,458	2,423	1	1	1	1	238	297	5,099	6,573
Faleasao County	34	34	287	278	-	-	-	-	35	34	824	718
Fitiuta County	54	79	579	675	-	-	-	-	56	79	1,138	1,615
Ofu County	52	51	828	723	-	-	-	-	52	53	1,054	1,425
Olosega County	31	47	147	186	-	-	-	-	32	56	632	569
Tau County and Swains Island	61	65	617	561	1	1	1	1	63	75	1,451	2,246
Tutuila, Eastern District	522	883	2,422	4,462	-	-	-	-	574	950	13,065	14,753
Ituau County	150	189	785	817	-	-	-	-	163	215	3,637	3,862
Mauputasi County	173	346	706	1,292	-	-	-	-	133	374	2,409	4,398
Saole County	76	105	366	655	-	-	-	-	77	110	2,119	1,775
Sua County	78	146	273	1,135	-	-	-	-	113	150	2,605	3,180
Vaifanua County	45	97	292	563	-	-	-	-	88	101	2,295	1,538
Tutuila, Western District	386	598	3,092	4,493	75	87	108	115	604	668	23,804	13,860
Lealataua County	136	208	823	1,186	5	7	9	8	207	264	5,777	5,097
Leasina County	40	87	337	771	10	-	11	-	53	88	1,744	1,532
Tualatai County	86	91	800	714	15	11	18	17	126	96	8,231	2,437
Tualauta County	124	212	1,132	1,822	45	69	70	90	218	220	8,052	4,794

Table 18. Off-Farm Work by Farm Operators, by District and County: 1970

(Off-farm work data are for the year 1969)

	Total	Farm operators reporting days of work off their farms				Operators not working off their farms	Operators not reporting
		Total	1 to	100 to	200 days or more		
			99 days	199 days			
American Samoa	1,923	1,699	551	651	497	104	120
Manua District and Swains Island	246	155	1	76	78	1	90
Faleasao County	36	11	-	5	6	-	25
Fitiuta County	56	56	-	22	34	-	0
Ofu County	52	52	1	49	2	-	0
Olosega County	38	35	-	-	35	-	3
Tau County and Swains Island	64	1	-	-	1	1	62
Tutuila, Eastern District	933	838	230	370	238	77	18
Ituau County	240	213	25	85	103	20	7
Mauputasi County	273	229	124	92	13	39	5
Saole County	112	89	12	52	25	18	5
Sua County	150	150	16	72	62	-	0
Vaifanua County	158	157	53	69	35	-	1
Tutuila, Western District	744	706	320	205	181	26	12
Lealataua County	268	261	90	88	83	3	4
Leasina County	63	57	25	7	25	5	1
Tualatai County	135	132	58	38	36	1	2
Tualauta County	278	256	147	72	37	17	5

Table 19. Operator Characteristics, by District and County: 1970

	All farm operators	Place of residence				Years on farm					
		Operators reporting			Operators not reporting	Operators reporting					Operators not reporting
		Total	Residence on farm	Residence off farm		Total	Under 2 years	2 to 4 years	5 to 9 years	10 years and over	
American Samoa	1,923	1,821	1,280	541	102	1,777	129	305	327	1,016	146
Manua District and Swains Island	246	233	99	134	13	154	2	5	47	100	92
Faleasao County	36	29	11	18	7	11	-	1	-	10	25
Fitiuta County	56	56	52	4	-	53	-	1	-	52	3
Ofu County	52	52	-	52	-	52	-	2	47	3	-
Olosega County	38	34	34	-	4	37	2	1	-	34	1
Tau County and Swains Island	64	62	2	60	2	1	-	-	-	1	63
Tutuila, Eastern District	933	862	618	244	71	889	81	150	149	509	44
Ituau County	240	204	203	1	36	226	24	34	43	125	14
Mauputasi County	273	262	208	54	11	255	31	67	38	119	18
Saole County	112	101	47	54	11	109	2	5	14	88	3
Sua County	150	150	62	88	-	143	13	20	20	90	7
Vaifanua County	158	145	98	47	13	156	11	24	34	87	2
Tutuila, Western District	744	726	563	163	18	734	46	150	131	407	10
Lealataua County	268	263	209	54	5	264	24	77	37	126	4
Leasina County	63	63	61	2	-	63	2	6	4	51	-
Tualatai County	135	130	107	23	5	131	3	23	40	65	4
Tualauta County	278	270	186	84	8	276	17	44	50	165	2

	All farm operators	Age								Main occupation			
		Operators reporting							Operators not reporting	Operators reporting			Operators not reporting
		Total	Under 25 yrs.	25 to 34 yrs.	35 to 44 yrs.	45 to 54 yrs.	55 to 64 yrs.	65 and over		Average age	Total	Agricultural	
American Samoa	1,729	47	317	497	467	285	116	46	194	1,746	654	1,092	177
Manua District and Swains Island	157	-	4	44	50	39	20	51	89	148	77	71	98
Faleasao County	11	-	-	1	6	3	1	54	25	11	6	5	25
Fitiuta County	55	-	1	18	13	13	10	52	1	56	34	22	-
Ofu County	52	-	2	14	20	12	4	50	-	47	3	44	5
Olosega County	38	-	1	11	10	11	5	52	-	33	33	-	5
Tau County and Swains Island	1	-	-	-	1	-	-	50	63	1	1	-	63
Tutuila, Eastern District	856	16	171	257	215	136	61	46	77	895	253	642	38
Ituau County	206	5	44	60	51	35	11	45	34	223	45	178	17
Mauputasi County	247	3	38	69	77	39	21	47	26	265	50	215	8
Saole County	105	3	20	34	28	12	8	45	7	105	44	61	7
Sua County	142	2	31	41	30	26	12	46	8	146	36	110	4
Vaifanua County	156	3	38	53	29	24	9	44	2	156	78	78	2
Tutuila, Western District	716	31	142	196	202	110	35	45	28	703	324	379	41
Lealataua County	261	13	52	79	69	35	13	44	7	249	86	163	19
Leasina County	63	-	7	15	20	16	5	50	-	57	35	22	6
Tualatai County	129	5	26	44	31	19	4	43	6	135	50	85	-
Tualauta County	263	13	57	58	82	40	13	44	15	262	153	109	16

Table 20. Tracts of Land in Place, Type of Holding, by District and County: 1970

	Total farms	Farms by number of tracts or pieces of land in place					Producing mainly for home consumption	Type of holding				
		1 tract	2 tracts	3 tracts or more	Not reported	Producing mainly for sale				Not reported		
						Total		crop	Livestock and/or poultry		Mixed	Other
American Samoa	1,923	979	535	375	34	1,793	117	82	2	33	-	13
Manua District and Swains Island	246	117	64	61	4	238	7	7	-	-	-	1
Faleasao County	36	24	4	7	1	32	3	3	-	-	-	1
Fitiuta County	56	42	11	1	2	56	-	-	-	-	-	-
Ofu County	52	27	18	6	1	52	-	-	-	-	-	-
Olosega County	38	3	8	27	-	35	3	3	-	-	-	-
Tau County and Swains Island	64	21	23	20	-	63	1	1	-	-	-	-
Tutuila, Eastern District	933	491	258	162	22	896	34	27	2	5	-	3
Ituau County	240	146	32	62	-	237	3	3	-	-	-	-
Mauputasi County	273	185	60	28	-	265	6	3	-	3	-	2
Saole County	112	51	30	12	19	106	6	4	1	1	-	-
Sua County	150	59	57	34	-	134	16	14	1	1	-	-
Vaifanua County	158	50	79	26	3	154	3	3	-	-	-	1
Tutuila, Western District	744	371	213	152	8	659	76	48	-	28	-	9
Lealataua County	268	159	73	36	-	254	14	10	-	4	-	-
Leasina County	63	22	19	17	5	60	3	3	-	-	-	-
Tualatai County	135	82	44	9	-	116	19	2	-	17	-	-
Tualauta County	278	108	77	90	3	229	40	33	-	7	-	9

APPENDIXES

	<i>page</i>
APPENDIX A. Definitions and Explanations _____	A-1
APPENDIX B. Report Form _____	B-1

Appendix A. Definitions and Explanations

General Information

Descriptive summary and reference—The definitions and explanations that follow relate only to those items that are considered to be inadequately described in the tables where they appear. Most of the definitions consist of a resume of the questionnaire wording, supplemented by excerpts from instructions given to enumerators. For exact wording of the questions and of the instructions included on the questionnaire, see the facsimile of the 1970 agriculture questionnaire in appendix B.

Dates to which data relate—The years shown in the title of each table are for the year of the census enumeration. The dates or years to which the data relate are indicated in this paragraph. For the 1970 census and all previous censuses, the land in farms, fruit and nut trees, equipment and facilities, livestock and poultry on hand represented the situation existing at the time of enumeration of each individual farm. The enumeration date for these censuses had been April 1, of the census year. Data for acres and production of crops related to the crops harvested during the crop year preceding the year of the census.

Farm operator—The term “farm operator” designates a person who operates a farm, either by doing the work himself or directly supervising the work. He may be the owner, a member of the owner’s household, a tenant or renter, or the manager or superintendent of an institutional farm. For Matai lands, the Matai was always considered as the operator of land used for the benefit of the extended family group (aiga). An individual member of the family group who raised crops or kept livestock or poultry for his own account on land assigned him by the Matai was considered as the operator of the land so assigned. By definition the number of farm operators is the same as the number of farms.

Farms reporting or operators reporting—Figures for “farms reporting” represent the number of farms for which the specified item was reported. For example, if there were 150 farms in a district and only 130 of them reported chickens on hand, the number of farms reporting chickens would be 130. The difference between the total number of farms and the number of farms reporting a particular item represents the number of farms not having that item, provided a correct report was received for all farms.

Where applicable, figures are given for the number of farms or operators not reporting items that were intended to be obtained for all farms; for example, years on farm. The number reporting

as compared with the total number of farms or operators, indicates the extent of coverage of the data for the item concerned.

Land and Land Use

Land in farms—The land to be included in each farm was determined from the reports for land owned, land rented from others, and land rented to others.

Land Owned includes all land which the operator held by legal ownership title, and also land which he claimed to own, without title.

Land Rented From Others includes all land used by the operator, other than land he owned, whether or not any rent was paid to the owner.

Land Rented to Others includes all land that the operator assigned to others for their own operations, whether or not he received any rental payment for it.

The figures for land owned and land rented from others were first added together and then the figure for land rented to others was subtracted. The result represents the amount of land in the farm. The data as originally reported for each farm were in terms of acres or of square feet. In this report, all area figures are given in terms of acres (43,560 square feet equal one acre).

Land in farms according to use—Land in farms on enumeration day, has been distributed according to the way in which it was being used on enumeration day. The land uses described in the following paragraphs are mutually exclusive in that each acre of land is included only once even though it may have had more than one use during the year.

Land in crops—refers to all land planted in crops at the time of enumeration. Land was to be reported only once even if two or more crops were planted on the land. It includes (1) land in field crops which would be grazed when mature or almost mature, (2) land in both bearing and nonbearing fruit and nut trees or plants or any other tree crops, (3) land that had partial, but not complete, crop failures, and (4) land in home gardens.

Other cropland—refers to all land that the operator considered to be cropland but on which no crops were planted at the time of enumeration. It includes (1) land used only for pasture and

grazing that the operator feels could be used for crops without additional clearing or irrigation; (2) land in crops that had complete crop failure as a result of drought, flood, insects, fire, or other causes; (3) land that was plowed or could be plowed without first clearing it of brush, but that was lying idle or fallow at the time of enumeration; and (4) land planted in cover crops, soil improvement crops, etc., at the time of enumeration.

Pasture or grazing land—refers to all land that was in use for pasture or grazing at the time of enumeration, except cropland pastured. It includes all woodland where livestock were being pastured or grazed. In the enumerator's Reference Book, "woodland" was defined as "all farm wood lots or timber tracts, natural or planted; and as cutover land with young growth which has or will have value as wood or timber."

Other land—refers to land such as house and other building lots, lanes, roads, ditches, land area of ponds, nonpastured woodland, and wasteland not included in the preceding land-use classifications.

Holdings

Type of holding—The purpose of the items under those headings was to classify holdings according to whether they were producing mainly for home consumption or mainly for sale, and then to classify the holdings belonging to the latter category by the most important types of agricultural production.

The first classification is based on the destination of the agricultural output of the holding during the year in question. Agricultural output refers to that which is left over after rent has been paid to the landlord and/or that which remains after deduction of the produce used on the holding for further agricultural production, for example, forage or seed.

Holding with production mainly for home consumption—This applies to holdings which produce mainly for home consumption. By "mainly" is meant that 50 percent or more of the agricultural output of the holding is consumed by the holder's household.

Holding with production mainly for sale—This applies to holdings where more than 50 percent of the agricultural output of the holding is produced for sale. Holdings producing mainly for sale were classified further according to the most important activity of the holding.

- a. Crop holding—More than 50 percent of the value of the sales of the holding was from the sale of crops.
- b. Livestock and/or poultry holding—More than 50 percent of the value of the sales of the holding was from the sale of livestock, livestock products, poultry, or poultry products.
- c. Mixed holding—Neither of the above groups of items account for more than 50 percent of the value of sales of the holding.
- d. Other—This group includes holdings not belonging to any of the previous groups.

Crops

Crops harvested—For field crops and vegetables, enumerators were instructed to record the area harvested in 1969 in terms of square feet or acres. Crops or tracts for which the square feet or area could not be determined were recorded in terms of the number of plants or hills harvested. These reports were converted to square feet or acres during the processing operations on the basis of information for other farms of similar size and crop production. In cases where two or more crops were harvested from the same land in 1969, the entire area was to be reported for each crop. The quantity of each field crop and vegetable harvested was recorded in number of roots or in number of plants, as applicable to the individual crop.

Fruit and nuts—For fruits, nuts, and other tree crops, data were obtained for the total number of bearing and nonbearing trees and plants on the place at the time of enumeration and for the number planted since 1965. For bananas, the number of hills or clumps was reported rather than the number of individual plants. No attempt was made to determine the amount of land area in tree crops. The quantity harvested was recorded either in pounds or in number of fruits or nuts.

This report contains comparable data for earlier census years for acreages or number of trees or plants for most of the crops included in the enumeration. For quantities harvested, however, the data obtained in censuses prior to 1960 are subject to considerable error because of the difficulty of obtaining accurate reports from many farm operators.

Livestock and Poultry

Inventory—Data for livestock and poultry on farms represent the number on hand at the time of enumeration. For Matai lands, all livestock and poultry owned by the Matai and the extended family group were to be reported. For privately operated lands, all livestock and poultry that were on each place at the time of enumeration were to be reported, regardless of ownership.

Cattle and calves—"Milk cows" were defined as cows that had been milked at any time during the preceding 12 months. All other cows were to be included in the report for "other cattle and calves."

Sales of chickens and chicken eggs—Data on the sale of chickens all ages and of chicken eggs were obtained for the first time in the 1970 census. Only the quantities of these products sold were to be reported. No questions were asked about the value of the sales.

Workpower

Source and ownership of workpower—Sources of workpower refers to those sources used only for agricultural activities on the place in 1969, whether or not the animal or mechanical power used belonged to the operator.

Operator Characteristics

Residence of operator—Farm operators were classified by residence according to whether or not they lived on the farms

they were operating. Some of those who did not live on the farms they operated themselves lived on farms operated by others. In cases where all the land was rented from others or worked on shares for others, the operator was considered to live on the farm operated provided the dwelling he occupied was included in the rental agreement. The dwelling, in such cases, was not necessarily on the land being operated. Similarly, a farm operator who did not live on the land being cultivated or grazed but who had some agricultural operations (other than a home garden) at his dwelling was considered as living on the farm operated.

Year began operating present farm—Enumerators were instructed to report the year during which a farm operator began to operate his present farm. The year was intended to refer to the first year of the period during which the operator had been in continuous charge of his present farm or of any part of it.

Work off farm—The extent to which farm operators rely on nonfarm sources for part of their income is indicated by the number of days worked off the farm during 1969. Work off the farm was defined to include work on someone else's farm for pay, as well as all types of nonfarm jobs, businesses, and professions, whether the work was done on the farm premises or elsewhere. Exchange work was not included.

Classification of Farms

This report presents detailed data for farms classified by size and tenure of farm operator.

Farms by size—Farms were classified by size on the basis of the total land area of each farm. According to the census definition, a farm is essentially an operating unit, not an ownership tract. All land operated or managed by one person or partnership represents one farm. In case of share-tenants, the land assigned to each share-tenant is considered a separate farm, even though the landlord may consider his entire landholding to be one unit, rather than several units.

Farms by tenure of operator—Farms were classified by tenure of operator on the basis of information reported for land owned, and land rented from others. During the processing operation, each questionnaire was coded to indicate whether the farm operator was a full owner, part owner, or a tenant.

- a. Full owner operates only land owned. He does not rent land from others.
- b. Part owners operate land they own plus land they rent from others.
- c. Tenants rent from others all the land they operate.

Report Form

Budget Bureau No. 41-S69059; Approval Expires December 1970

FORM 69-A1 (AS) (10-6-69)	U.S. DEPARTMENT OF COMMERCE BUREAU OF THE CENSUS	Response to this inquiry is required by law (Title 13, U.S. Code). By the same law your report to the Census Bureau is confidential. It may be seen only by sworn Census employees and may be used only for statistical purposes.
CENSUS OF AGRICULTURE – 1970 AMERICAN SAMOA		Questionnaire number _____

INSTRUCTIONS

This Agriculture questionnaire should also be filled for each Matai, and each school or other type of institution, if any crops were raised or harvested in 1969, or if there was a combined total of 10 or more fruit or nut trees, or plants or any livestock or 5 or more poultry on this place on enumeration day.

Matai lands

- a. The Matai should be reported as the person in charge under question 1.
- b. All lands to which title is held or ownership is claimed by the Matai should be reported as owned under question 3.
- c. Any land used for the benefit of the extended family group (aiga), to which Matai does not hold title or claim ownership, should be reported as land rented from others under question 4. Do this even though no rent is paid to the owner of this land.
- d. Any land to which title is held or ownership claimed by the Matai which is used by a nonmember of the extended family group (aiga), should be reported as land rented to others under question 5. Do this even though no rent is paid by the nonmember. Likewise, if any member of the Matai family (fanau) or extended family group (aiga) is in full charge of the growing crops or keeping of animals or poultry on lands assigned to him by the matai, such lands should be entered under question 5. In such cases, a separate Agriculture Questionnaire should be filled, for the lands reported under question 5, in the name of that member as the person in charge.
- e. The area for which the Matai is expected to report about crop production is restricted to that shown under question 6.

Privately owned lands, not held or operated under the Matai system

If crops were raised or livestock or poultry are kept, fill this Agriculture Questionnaire in the name of the person in charge. He is the one responsible for making the decisions. He will usually be the head of the family which plants or gathers the crops.

Experimental farms, schools, churches, and other institutes

If crops were raised or livestock or poultry are kept, fill this Agriculture Questionnaire in the name of the institution (question 1). Also, give the name of the manager or superintendent in question 1.

Section 1 – OPERATOR

1. What is your name (the operator)?	Full name
2. What is your address? (Give the address where the operator receives correspondence.)	Address

Section 2 – LAND IN AGRICULTURE

	None	Acres	OR	Square feet
3. How many acres do you own?	<input type="checkbox"/>			
a. Are these Matai lands? <input type="checkbox"/> No <input type="checkbox"/> Yes				
4. How many acres do you rent FROM OTHERS? – Include land used rent free	<input type="checkbox"/>			
a. What is the name of the owner of this land? – Full name →				

b. Are these Matai lands? <input type="checkbox"/> No <input type="checkbox"/> Yes				
5. How many acres do you rent TO OTHERS? – Include lands for which no rent is received	<input type="checkbox"/>			
6. TOTAL AREA OF THIS PLACE (Add questions 3 and 4 and subtract from this total the entry in question 5.) →				
7. How many separate tracts or pieces of land or plantations are represented in the "Total area of this place?"				Number of pieces
8. Is this holding producing mainly for – (Mark one)				
a. <input type="checkbox"/> Home consumption? (Go to Section 3)				
b. <input type="checkbox"/> Sale?				
9. If producing mainly for sale, is it a – (Mark one)				
a. <input type="checkbox"/> Crop holding?				
c. <input type="checkbox"/> Mixed holding?				
b. <input type="checkbox"/> Livestock and/or poultry holding?				
d. <input type="checkbox"/> Other?				

Report Form—Continued

Section 3 — CROPS HARVESTED IN 1969				
VEGETABLES AND FIELD CROPS Which of the following crops were harvested last year?	None	How much was harvested in 1969?	How much area was harvested in 1969?	
			Acres	OR Square feet
10. Taro	<input type="checkbox"/>	Roots		
11. Yams	<input type="checkbox"/>	Roots		
12. Sweet potatoes	<input type="checkbox"/>	Roots		
13. Cassava	<input type="checkbox"/>	Roots		
14. Giant taro	<input type="checkbox"/>	Roots		
15. Arrowroot	<input type="checkbox"/>	Roots		
16. Tobacco	<input type="checkbox"/>	Plants		
17. Sugarcane for thatching	<input type="checkbox"/>	Plants		
18. Other crops (corn, Kava, etc.)— Give name →	<input type="checkbox"/>	Unit		
FRUITS, NUTS, AND TREE CROPS (Quantity harvested in 1969 and number of trees or plants on enumeration day.) Which of the following fruits, nuts, or tree crops were harvested in 1969 or are on this place now?				
FRUITS, NUTS, AND TREE CROPS (Quantity harvested in 1969 and number of trees or plants on enumeration day.) Which of the following fruits, nuts, or tree crops were harvested in 1969 or are on this place now?	None	How much was harvested in 1969?	How many trees or plants are on this place?	
			Total	Planted since 1965
19. Avocados	<input type="checkbox"/>	Pounds		
20. Bananas	<input type="checkbox"/>	Pounds	Hills or clumps	Hills or clumps
21. Grapefruits	<input type="checkbox"/>	Pounds		
22. Oranges	<input type="checkbox"/>	Pounds		
23. Citrons	<input type="checkbox"/>	Pounds		
24. Breadfruits	<input type="checkbox"/>	Pounds		
25. Coconuts	<input type="checkbox"/>	Pounds		
26. Lemons	<input type="checkbox"/>	Pounds		
27. Mangoes	<input type="checkbox"/>	Pounds		
28. Papayas	<input type="checkbox"/>	Pounds		
29. Coffee	<input type="checkbox"/>	Pounds		
30. Limes	<input type="checkbox"/>	Pounds		
31. Cacao	<input type="checkbox"/>	Fruits		
32. Pineapples	<input type="checkbox"/>	Unit		
33. Other planted fruits, nuts, or tree crops (pandanus, kopak, etc.) — Give name →	<input type="checkbox"/>	Unit		
		Unit		
		Unit		

Report Form—Continued

Section 4 - LAND USE

Of the total acres in this place (question 6) -	None	Acres	OR	Square feet
34. How many acres are in crops?	<input type="checkbox"/>			
35. How many acres are in other cropland (cropland pasture, crop failure, idle and fallow cropland, and cropland used for soil improvement)?	<input type="checkbox"/>			
36. How many acres are in pastureland?	<input type="checkbox"/>			
37. How many acres are in other lands?	<input type="checkbox"/>			
38. TOTAL LAND (Add entries in questions 34-37. Total should be equal to entry in question 6.) →				

Section 5 - LIVESTOCK AND POULTRY

How many of the following livestock and poultry are on this place on enumeration day?	None	Number
39. Cattle and calves of all ages	<input type="checkbox"/>	
Of this total, how many are -		
a. Milk cows?	<input type="checkbox"/>	
b. All other cattle and calves? (The sum of questions "a" and "b" must equal the total for question 39.)	<input type="checkbox"/>	
40. Hogs and pigs of all ages	<input type="checkbox"/>	
41. Horses, mules, and colts of all ages	<input type="checkbox"/>	
42. Chickens of all ages	<input type="checkbox"/>	
43. Other poultry of all ages (ducks, pigeons, guineas, geese, etc.) - Specify →	<input type="checkbox"/>	
	Sold in 1969	
	None	Number
44. How many chickens of all ages were sold during last year?	<input type="checkbox"/>	
45. How many dozens of chicken eggs were sold during last year?	<input type="checkbox"/>	Dozens

Section 6 - SOURCE AND OWNERSHIP OF WORKPOWER USED ON THIS PLACE IN 1969

46. What source of workpower was used on this place last year?

a. Mechanical power Yes No
(Check "Yes" box if any agricultural work was done on this place by some machine or machines propelled or operated by petroleum, oil, gas, steam, water, wind, or electricity.)

b. Animal power Yes No
(Check "Yes" box if any agricultural work was done on this place by horses, mules, burrow, oxen, carabaos, or any other animal.)

47. Who owned the following source of power?	You (the operator)	You and another person jointly	Your landlord	A private contractor	A government agency	Power not used
a. Tractor	<input type="checkbox"/>	<input type="checkbox"/>	<input type="checkbox"/>	<input type="checkbox"/>	<input type="checkbox"/>	<input type="checkbox"/>
b. Other mechanical power	<input type="checkbox"/>	<input type="checkbox"/>	<input type="checkbox"/>	<input type="checkbox"/>	<input type="checkbox"/>	<input type="checkbox"/>
c. Animal power	<input type="checkbox"/>	<input type="checkbox"/>	<input type="checkbox"/>	<input type="checkbox"/>	<input type="checkbox"/>	<input type="checkbox"/>

Section 7 - OPERATOR CHARACTERISTICS

All these questions are related to the farm operator.

48. Do you live on this place? Yes No

49. In what year did you begin to operate this place?

Year

50. How old were you on your last birthday?

Years old

51. What is your main occupation?
 Agricultural Non-agricultural

52. How many days did you work off this place in 1969?
 None 1 to 99 days 100 to 199 days 200 days or more

