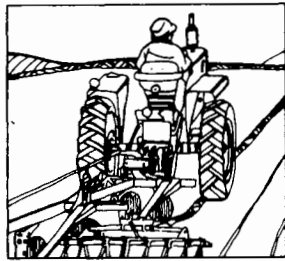
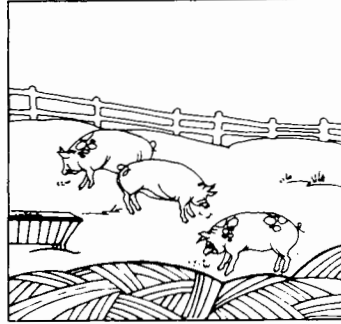


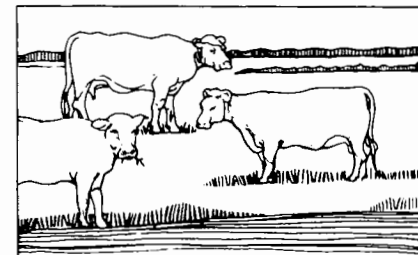
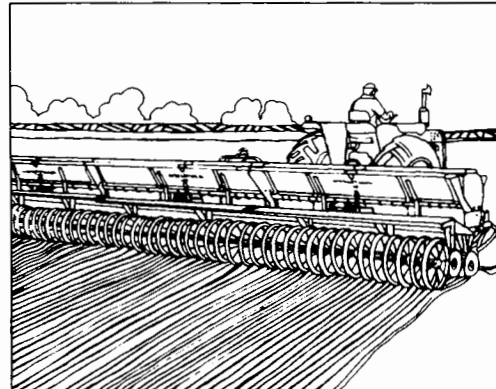
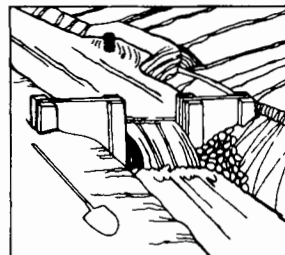
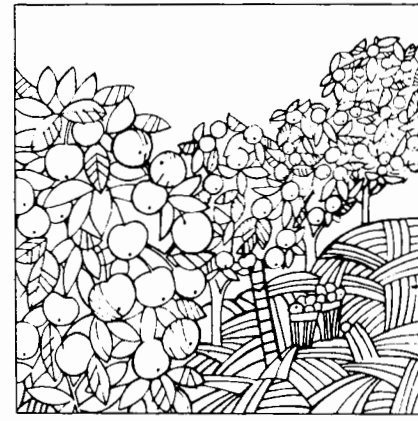
part 16

EVALUATION OF COVERAGE

VOLUME V
SPECIAL REPORTS



1969 CENSUS OF AGRICULTURE



Issued June 1974



U. S. DEPARTMENT OF COMMERCE

Frederick B. Dent, Secretary

Sidney L. Jones, Assistant Secretary for Economic Affairs

Social and Economic Statistics Administration

Edward D. Failor, Administrator

BUREAU OF THE CENSUS Vincent P. Barabba, Director

Robert L. Hagan, Deputy Director



BUREAU OF THE CENSUS

Vincent P. Barabba, Director
Robert L. Hagan, Deputy Director
James W. Turbitt, Associate Director
for Economic Fields

AGRICULTURE DIVISION

J. Thomas Breen, Chief

REPORTS OF THE 1969 CENSUS OF AGRICULTURE

Individual County Reports

Eight-page reports have been issued for each county and State.

Volume I. Area Reports

A separate report has been published for each State, American Samoa, Guam, Puerto Rico, Trust Territory, and the Virgin Islands. The report consists of two sections. Section 1 contains State summary data, county summary of selected data, and miscellaneous items by counties; Section 2 contains the detailed county reports.

Volume II. General Report

Statistics by subject are presented in separate chapters with totals for the United States, regions, geographic divisions, and States. The nine chapters are being issued as individual reports as follows:

Chapter 1 General Information; Procedures for Collection, Processing, Classification

Chapter 2 Farms: Number, Use of Land, Size of Farm

Chapter 3 Farm Management, Farm Operators

Chapter 4 Equipment, Labor, Expenditures, Chemicals

Chapter 5 Livestock, Poultry, Livestock and Poultry Products

Chapter 6 Crops, Nursery and Greenhouse Products, Forest Products

Chapter 7 Value of Products, Economic Class, Contracts

Chapter 8 Type of Farm

Chapter 9 Irrigation and Drainage on Farms

Volume III. Agricultural Services

This new report contains data relating to agricultural services for the United States by State and county.

Volume IV. Irrigation

Data will be included on drainage basins, land irrigated, crop production on irrigated land, water conveyed, users, and types of organizations.

Volume V. Special Reports

Reports may contain data obtained from supplemental surveys, such as type of farm, horticulture, and farm finance; in addition to information obtained in the census.

Parts 1 to 9. Type-of-Farm Operations.—One for each of nine major type-of-farm classifications.

Part 10. Horticultural Specialties.

Part 11. Farm Finance.

Part 12. Ranking Agricultural Counties.

Part 13. Forms and Procedures.

Part 14. Procedural History.

Part 15. Graphic Summary.

Part 16. Evaluation of Coverage.

Volume VI. Drainage of Agricultural Lands

This report will include agricultural drainage statistics collected from individual farms and from publicly organized drainage projects.

ACKNOWLEDGMENTS—Many persons contributed to the coverage evaluation program for the 1969 Census of Agriculture. First and foremost are the many farm operators, members of their families, and employees who furnished the information.

The U.S. Department of Agriculture, Statistical Reporting Service cooperated with the Bureau of the Census in providing sample data for the measurement base used in the coverage program. Dr. Bruce W. Kelly, Glen Sutter, Burton Barr, and the State office personnel of the Statistical Reporting Service were most prominent in the overall coordination effort and planning for this program.

The coverage evaluation program was conducted under the direction of J. Thomas Breen, Chief, and J. Jack Ingram, Assistant Chief of Research and Methodology, Agriculture Division. The planning, processing, and tabulation of the statistics were performed under the supervision of D. Dean Prochaska, Chief of the Program Research and Development Branch, Agriculture Division. Other persons providing major assistance in the processing program and tabulation phases were Burton Barr, (SRS detail), Sidney O. Marcus, R. Maurice Kniceley, Joy H. Stefan, Tom Moore, Dorothy Blackistone, Esther Stanback, and Napoleon Sobolewski.

Technical assistance and consultation were provided by Thomas B. Jabine, former Chief, Statistical Research Division, Margaret Gurney, and Maria E. Gonzales.

Field followup data-collection activities were administrated by Richard C. Burt, Chief, Field Division with assistance from James Johnson and the Bureau's Data Collection Center's staff.

Helen D. Turner and Janet W. Hall were responsible for the various phases of the publication process for Agriculture Division.

SUGGESTED CITATION

U.S. Bureau of the Census, Census of Agriculture, 1969

Volume V. Special Reports

Part 16. Evaluation of Coverage

U.S. Government Printing Office, Washington, D.C. 1974

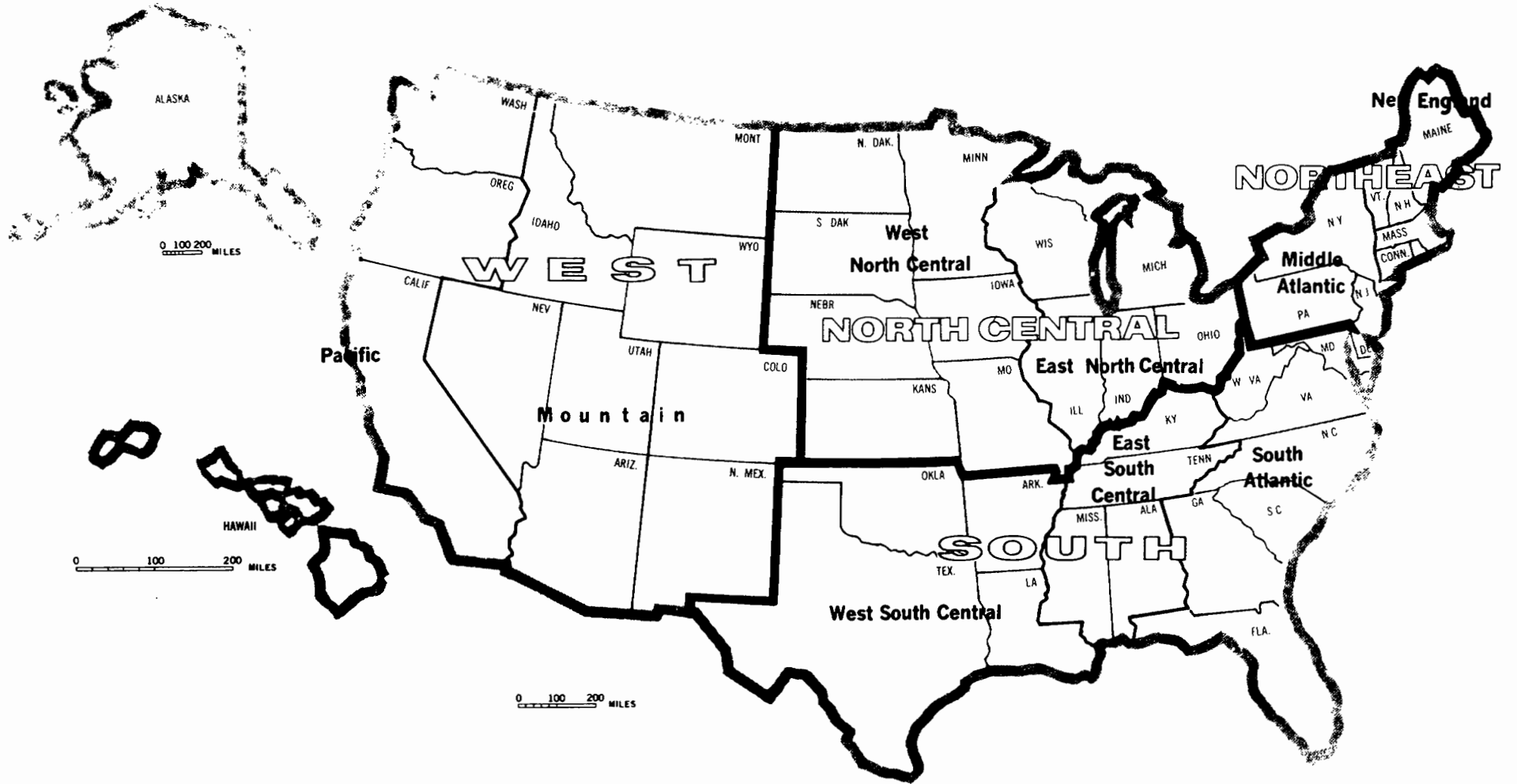
LIBRARY OF CONGRESS CARD NO. 72-601370

For sale by the Superintendent of Documents, U.S. Government Printing Office, Washington, D.C. 20402, and U.S. Department of Commerce district offices. Price \$1.05

CONTENTS

	Page
Map	
Census Geographic Regions and Divisions of the United States	IV
Introduction	
General Information	1
The 1969 Census of Agriculture	2
Survey Design and Methodology	3
Coverage Check Results	6
Special Census Evaluation	9
TEXT TABLES	
Table A. Estimates of Census Coverage and Sampling Error of Number of Farms by Value of Sales Group:	
United States	6
B. Comparison of Census Coverage of Farms and Value of Products by Value of Sales Class: United States	8
C. Coverage Check Farms Included in the Census by Mail List Sources: United States	8
D. Number of 1969 and 1964 Census Farms by Total Value of Products Sold Group: Washington and Oregon	10
E. Coverage-Check Missed Farms by Match Status and Relationship to IRS Files: Washington and Oregon	10
F. Coverage-Check Missed Farms Filing Individual Returns in 1968 and/or 1969, by State and Value of Products: Washington and Oregon	10
G. Coverage-Check Missed Farms With IRS Business and/or Farm Returns in 1968 and/or 1969 State and Total Value of Products: Washington and Oregon	11
DETAILED TABLES	
Table 1. Number of Farms by Components of Coverage by Value of Sales Class	13
2. Number of Farms by Components of Coverage by Value of Sales Class and Type of Farm	14
3. Number of Farms by Components of Coverage by Tenure and Size; Age and Residence of Operator	16
4. Number of Acres for Estimated Total and Included in Census With Sampling Error	17
5. Characteristics of Farms Missed in the Census by Class	18
6. Characteristics of Farms Missed in the Census by Type of Farm	20
7. Number of Farms by Components of Coverage by Value of Products Sold Including Adjustments for Nonrespondents	22
8. Number of Farms by Components of Coverage by Value of Products Sold Excluding Adjustments for Nonrespondents	24
9. Characteristics of Farms Missed in the Census	26
10. Sampling Reliability of Estimates for Number of Farms by Components of Coverage and Value of Sales Class	28
11. Sampling Reliability of Estimates for Number of Farms by Components of Coverage and Value of Products Sold	29
APPENDIX	
Exhibit A. Coverage Check Processing Procedures	A-1
B. ZIP Code Reference	A-2
C. Form 69-A90 Evaluation of the 1969 Census of Agriculture	A-3
D. Coverage Classification Codes	A-7

CENSUS GEOGRAPHIC REGIONS AND DIVISIONS OF THE UNITED STATES



Introduction

GENERAL INFORMATION

Purpose of Census Coverage Checks

The Bureau of the Census attempts to measure the accuracy of its statistics for all major censuses. The coverage check evaluation program is a major source for indications of data completeness and accuracy in the census of agriculture. The primary purposes of the coverage check for censuses of agriculture are—

1. To provide users of the census data with estimates of the completeness of the census farm counts and of a limited number of items.
2. To identify factors associated with census errors, including an evaluation of the characteristics of the farms missed in the census, in order to improve coverage in the future censuses.

Previous Coverage Checks and Evaluation Programs

A coverage check has been conducted for each census of agriculture since 1945. The basic procedures have been the same for past coverage checks, but techniques have been refined and sample design improved with each census.

The basic procedures have been—

1. Selection of an area probability segment sample and canvass of all farms associated with each segment to establish a measurement base or standard.
2. Match of all farms in the base sample, case by case, to the census reports and lists to establish the relationship of the census to the base sample units.
3. Followup to check and clarify differences and establish "true" values.
4. Processing, tabulation analysis, and publication of results.

The use of an enumerated area sample as a measurement standard was justified on the basis of the higher quality results obtained thru more intensive enumeration and processing of the sample farms than is possible in a nationwide census.

Starting in 1950, the results of the coverage checks have been widely available to users of the agriculture census data.

Publication has been primarily in the regular census of agriculture volumes. Preliminary results of the coverage checks have been made available to the Department of Agriculture as quickly as possible for use in revising the current estimates on number of farms, land in farms, cropland, livestock numbers, and major crops.

In addition to the usual evaluation of census coverage, special evaluation studies have been completed during each census period. These studies include such subjects as accuracy of reporting, coverage of specific commodities or areas, and the effects of various processing operations.

Objectives of the 1969 Coverage Check

The basic purposes of the coverage check for the 1969 Census of Agriculture have been the same as for previous censuses. However, since the 1969 census was the first to be enumerated by mail, some specific objectives were altered, and others were added in order to determine the effectiveness of the new procedures.

The 1969 coverage check was planned to accomplish the following objectives:

1. To measure the completeness of the census mailing list and the farm count, and the effectiveness of the census processing procedures in identifying farms.
2. To provide estimates for selected items, indicating the characteristics of farms not included in the census.
3. To evaluate the consistency of reporting acres of land in farms by operators included in the census.
4. To evaluate the quality of the various administrative lists used to construct the census mailing list and provide information for improving coverage in future censuses. Special emphasis was placed upon evaluation of the contribution of the different list sources to the number of census farms, the evaluation of the accuracy of the source size indicators and the extent of the duplication between sources.
5. To make estimates of coverage for the larger States, in addition to the regional and national level of estimates provided in prior coverage checks.

Types of Measurement Error

The error in a statistic is the difference between the statistic and its "true" value. True values are usually hypothetical; therefore, in practice we use target values or estimates of "true" value obtained by improved measurement methods.

It is useful to consider the measurement errors in a census conceptually in two components — response variance and bias. To do this, it is necessary to assume that the census is a repeatable process of measurement; i.e., that independent census enumerations could be carried out with some conditions, such as the form of the questionnaire and written instructions, held constant but with other conditions, such as the particular persons selected as enumerators and the time of day a particular farm operator is interviewed, subject to random fluctuations¹

For national statistics especially those self-enumerated, the error due to response variance is probably insignificant in comparison to the bias. The response variance arises from factors which tend to average out through compensating errors when large numbers of enumerators and/or respondents are involved, whereas the bias, although it may differ considerably for different areas or different censuses, is essentially independent of the size of the population. For smaller areas, such as counties and townships, however, response variance may be a significant source of error.

The above definitions are appropriate for census items for which data are collected from all farms. If some items are collected on a sample basis, sampling variability must also be considered along with the other components of error.

THE 1969 CENSUS OF AGRICULTURE

Background

The following brief description is presented to provide background for the coverage check. A more detailed description is presented in 1969 Census of Agriculture, volume II, chapter 1.

The 1969 Census of Agriculture was the first mailout-mailback self-enumerated national census of agriculture. All prior censuses were taken by personal interview in a complete canvass of rural areas. The first of these was taken in 1840 as part of the Sixth Decennial Census. They were taken every 10 years thereafter as part of the decennial censuses until 1920. In 1909, Congress provided for a national census of agriculture to be taken every 5 years. However, the census was not taken in 1915 because of abnormal conditions created by World War I. The census was taken in 1920 and every 5 years thereafter.

The feasibility of a mail enumerated census was tested prior to the census in a study involving a match of the 1964 coverage sample farms to Internal Revenue Service (IRS) records for the same period.² That study indicated that on a national basis

¹ In practice, of course, independent repetitions of a census cannot be realized; however, the model can reasonably approximate actual census conditions.

² Detailed results are published in U.S. Census of Agriculture 1964, Volume III: Special Reports, Part 7: Evaluation Surveys, Chapter 1: Coverage Check, Washington, D.C., Government Printing Office.

about 96 percent of farms with total value of products (TVP) of \$2500 or greater would be included on a mailing list composed of names and addresses from IRS alone. Nationally the indications were that the IRS list would include about 70 percent of the farms with TVP less than \$2500; for the South the indicated inclusion rate for farms with TVP less than \$2500 was about 62 percent.

The Mailing List

The initial step in conducting the 1969 census was the construction of a mailing list of names and addresses of persons and organizations associated with agriculture. The primary record source for the mailing list was the IRS Form 1040 F file of farm operators and persons with farm income for tax year 1968. Other supplemental files used were the Form 1040 C file of farm businesses, the Form 1065 farm partnership file, the Form 1120 S small farm corporation file, the Form 943 farm employers file, the Agriculture Stabilization and Conservation Service (ASCS, USDA) file in the Northeastern, Southern, and specified North Central States, and an updated large farm list from the previous census. All of the lists contained names of persons associated with agriculture but not all units on the mailing list represented census farms.

The lists were merged and unduplicated on the basis of social security and/or employer identification (EI) number. The total potential census mailing list which resulted had about 5,000,000 names and addresses. The names which had size indicators for under \$2,500 value of agricultural production were sampled at a rate of 1 in 2 for the census. These smaller units were mailed an abbreviated report form (Form 69-A2). All other units were sent the more detailed standard report form (Form 69-A1).

Data Collection

The major part of the census name and address file (about 3.7 million names) was mailed in late December, 1969. Supplemental lists primarily from ASCS, containing about 132,000 names were mailed in May 1970. In addition, about 309,000 report forms were mailed in July 1970 to units filing 1040 F returns for tax year 1969, but not for the tax year 1968.

It was known that the mailing list contained duplicates and names of persons who were not farm operators (out of scope). Screening questions on the 69-A2 report form were designed to eliminate most of the out-of-scope cases early in the processing.

In order to eliminate duplication which remained after unduplication on identification number, persons receiving more than one report form for the same operation were requested to complete one of them and to return the others marked "Duplicate."

There were five followup mailings after the original December mailing. The first was a reminder card mailed on January 10, 1970, to all units receiving the standard form (69-A1). All nonrespondents (69-A1 and 69-A2) as of February 13 were sent a followup letter on February 25. The third followup was mailed April 8 to nonrespondents and included a letter and report form. The fourth and fifth followups were mailed on May 13 and June 9, respectively, with a report form and letter

SURVEY DESIGN AND METHODOLOGY

being sent in the final mail followup. The cumulative percent returns for the initial mailing at each followup date were as follows: February 25: 61 percent; April 8: 74 percent; May 13: 81 percent; and June 9: 85 percent. The supplemental list units which were added after the initial mailout received only one mail followup and had a much lower rate of return (between 40 and 50 percent).

At the time of the fourth followup (about May 13) an intensive telephone and personal interview program was begun for all nonrespondents having indicator codes for \$50,000 or more total value of agricultural products (TVP). The proportion of nonrespondents remaining after the last mail followup was examined at the county level to identify counties with unacceptable response rates. As a result, 371 counties in 29 States were selected for additional followup by personal interview.

The nonrespondents in these counties all had size indicator codes for TVP of under \$50,000, since the intensive telephone followup program begun in May had accounted for those with larger indicators. About 86,000 reports were completed in the field followup.

Treatment of Nonrespondents

By mid-September, no response had been received for about 13 percent of the total report forms mailed out. The large majority of nonrespondents included farms with TVP under \$50,000 and farms from the supplemental mailings. A regional sample of these nonrespondents, stratified by size class was followed up intensively, using mail and telephone procedures. Based upon the sample, it was estimated that almost half of the names were out of scope of the census or had received more than one report form (duplicate) and had sent only one back. The estimates of in-scope farms in the census nonrespondent group were used in a procedure which replicated reported data for similar sized respondents within the same county to represent the non-respondent farms. In the final census data tabulations the total number of farms replicated was 8.7 percent of the published census farm count. Since these farms were generally smaller than average, they accounted for an estimated 4.5 percent of the total value of agricultural products sold.

Processing the Data

All report forms received from census respondents were clerically reviewed prior to keying the data. For most farms this operation involved a brief review, primarily to place the data in a keyable format. Reports for large operations were reviewed in detail by the professional staff.

After the data keying, all data were subjected to a detailed computer edit operation which supplied missing data, corrected inconsistent data and made farm classifications needed for data tabulation. Exceptionally large values and major inconsistencies were printed out for technical review.

Data correction runs were made on the computer and another review was made to insure the corrections had been properly carried. The data were then tabulated and again reviewed prior to publication.

Standard Used for Measuring Coverage

The base or standard used for measuring coverage in the 1969 Census of Agriculture was the area sample of farms meeting the census definition from the 1969 June Enumerative Survey. The June Enumerative Survey was conducted by the Statistical Reporting Service, USDA. The use of the June Survey data was based upon a cooperative agreement between the Statistical Reporting Service (SRS) and the Bureau of the Census. The type of survey information to be provided and the conditions for use of the information were specified in the agreement. The agreement illustrates the recent progress being made by government agencies in reducing respondent burden through cooperative studies as well as in reducing costs by consideration of appropriate alternatives.

The June Enumerative Survey Sample of Farms

The June Enumerative Survey sample was a stratified area sample of farms in the 48 conterminous States. It used a modified closed segment approach in associating farms, land, crops, and livestock with the sample segments. The stratification was geographical, based upon the intensity of agriculture.³ The sample consisted of about 17,000 area segments which included about 23,000 farm operators living in the segments. The average size of segment ranged from about 300 acres in areas where most of the land was under cultivation to about 4,000 acres in the range or grazing areas. The June Survey collected agriculture data for the whole farm if the operator lived in the area segment and only for land in the segment plus livestock data for the whole farm if the operator lived outside the segment. Information for the June Survey was collected in personal interviews by enumerators employed by SRS.

The base used for the 1969 coverage check was the sample of approximately 23,000 farm operators living inside the segment, for whom whole farm data were available, together with a subsample of 1500 of the 30,000 respondents located in the sample segments but classified as nonfarm in the June Enumerative Survey. The June Survey information obtained for the 23,000 segment residence operators included name and address, name of farm or ranch, county of location, telephone number, total acres in place, acres by tenure, and class interval based upon total value of June Survey 1968 sales. Only name and address and county of location were obtained from SRS for the nonfarm part of the sample.

In the coverage check processing, small operations in the June Survey were reviewed to determine if they qualified as farms under the census operational definition. Those not qualifying were excluded from the measurement base.⁴ In addition, June Enumerative Survey nonfarm places were reviewed to deter-

³ For a more complete description of the sample design and related information, see Trelogan, H.C. and Houseman, E.D., "Progress Toward Optimizing Agricultural Area Sampling," Paper presented at 36th session of the International Statistical Institute, Sydney, Australia, 1967.

⁴ Although the Census Bureau and USDA have the same general definition of a farm, some differences occur due to the information available and the operational methods of defining a farm. In general, the USDA criteria produce larger farm counts.

mine if they qualified as Census farms. If they qualified, they were added to the base.

The June Survey provided a source for the coverage check which was operationally independent of the census and the sources used to construct the census mailing list. The sample size was larger than for past coverage checks. It provided the capability for greater reliability, greater geographic detail than was previously possible, and at a considerable savings in cost.

Coverage Check Processing Procedures

The principal processing operations (see exhibit A) for the coverage check were—

1. Receipt of June Survey data from the Department of Agriculture and transcription to control-match records.
2. A first match (Stage 1) on name and address of June Enumerative Survey sample cases to the entire census name and address microfilm file and preliminary classification as match, nonmatch, or possible match.
3. Mailing of report forms (69-A90) and followup for all nonmatch and possible match cases. The purpose of the mailing was to obtain additional information which would possibly permit a better determination of match status.
4. Second match (Stage 2) of cases in item 3, above, to the census file using the additional information collected.
5. Match to census report forms and technical review for assignment of coverage classification codes to distinguish association with the census.
6. Transcription to keying document and keying.
7. Consistency edit by computer and edit review.
8. Corrections and correction runs.
9. Tabulation of data.

The matching was primarily a clerical operation based upon name and address. Detailed specifications and procedures were provided to clerks in making the determinations between match and possible match situations. In general, when a positive match was found no further search continued. This could contribute to an underestimate of mailing list duplication. The census file was on microfilm and contained about 5.7 million names and addresses. The microfilm file consisted of the following six major parts:

1. Original file: Contained about 3.6 million records from the ASCS files and the following IRS files: 943, 1065, 1120S, 1040F, 1040C. These are names and addresses to which census report forms were mailed in December 1969.
2. "1968 Adds" file: Contained about 72,000 records consisting of all ASCS outside the South having EI numbers and/or government payment codes indicating

\$25,000 and over and some late IRS 1040F and 1040C filers. These were also mailed in late December 1969.

3. "ASCS Adds": Contained about 122,000 ASCS records from New England and Middle Atlantic States and Ohio and Michigan which had not been mailed in December. These were added because of an indication of low coverage in those areas. A list of approximately 10,000 specialized farm operator names from various specialized sources was included in this mailing. These were mailed, for census purposes, in May 1970.
4. "1969 Births": Contained names of IRS 1040F and 1040C, 943, 1065 and 1120S filers who reported farm operations in IRS processing year 1970, but who, after partial unduplication, did not appear to have been included in earlier mailouts. These yielded about 309,000 names and were mailed, for census purposes, in July 1970.
5. Small farms not included in the census 50 percent sample: This file contained about 900,000 names and addresses having size indicators of under \$2,500, which were not selected in the 50-percent sample of small farms.
6. Names and addresses on ASCS lists not included in mailing list: There were about 700,000 names and addresses on the ASCS files not used for the mailing list in the Western and North Central States. Matches against this file were made to measure possible improvement in coverage which use of the entire ASCS file might afford.

For the purpose of facilitating the match, each of the above six parts was sorted by State, county, ZIP code, and name control (first four letters of last name).

The Stage 1 matching operation was complicated by the lack of precision in assignment of county of location of the agricultural operation in the administrative records used in compiling the census mailing list. County was assigned to the census record from the ASCS source file if it appeared on that file. Otherwise, it was assigned to the "most probable" county based on the ZIP code of the post office named in the address.

This meant that a given agricultural operation might be shown in one county in the June Enumeration Survey, but its county as shown on the mailing list could have been different. A reference file to aid the matching operation was compiled on the computer. It listed each ZIP code in the major census file and each county in which the ZIP code appeared. (See exhibit B.)

The Stage 1 matching operation was completed in June 1970, and a specially designed report form (Form 69-A90) was mailed to all nonmatch and possible match cases in July 1970. (See exhibit C). The 69-A90's were not mailed to matching census nonrespondents, since final nonrespondents could not be identified at that time. The report form contained basic questions on land, land ownership, farm production, and farm operator characteristics. To provide additional information for matching to the census file, questions were asked regarding county of location of all land, changes in acres operated in 1969, alternate mail addresses, Social Security and/or EI number, type of business organization, and names and addresses of other persons associated with the operation. Report forms

were mailed to about 4,200 nonmatched and 3,000 possible match cases. Three followup mailings were performed with about 80-percent mail response. Nonrespondents to the third mail followup were enumerated by personal interview. To reduce costs of the field followup, those farms with size indicators of under \$2,500 total value of products sold were subsampled. Personal interview followups were conducted for all farms with \$2,500 and over total value of products sold.

The Stage 2 matching operation was a second attempt to locate coverage check sample farms in the census files. Supplemental information on the 69-A90 report form was used for this additional search. At this stage, about 4,200 of the 7,200 preliminary nonmatch and possible match cases were found to be included on the census lists. After the Stage 2 match, census report forms were pulled and copies prepared for all matched cases. These materials were assembled and reviewed for acreage comparability and coverage classification in relation to the census.

There were 32 coverage classification codes used to identify coverage check cases within the 3 major groupings: Included, overcounted, or missed in the census. Each of the three major groupings had subclasses which related to the similarity of acres, the part of the sample, or the part of the census involved. (See exhibit D.) Differences in acres of reporting unit were resolved primarily by telephone followup. If the respondents did not have telephones, necessary information was obtained with assistance from the county agricultural offices. The review of very small operations to determine qualification as a farm under the census definition, and the additional search for large farms classified as missed in the census were also completed during the technical review. (See exhibit A.)

Transcription of coverage check data to a keyable format and keying were completed in December 1971. In early 1972, the program for the computer consistency edit was completed. The purpose of the computer edit was to identify technical review and keying errors. Edit correction took place in mid-1972. Preliminary estimates were published in August 1972.⁵ Corrections and correction runs followed and were completed in October 1972. Census data records for matched coverage check units were then merged with the coverage data to form a single coverage data file. The tabulation of coverage check data was the final processing step.

Estimation Procedure

The coverage check provides estimates of three components of coverage in relation to the census. These are estimates of farms and acres —

1. Included in the census.
2. Overcounted in the census.
3. Missed in the census.

⁵Preliminary results were published in a paper titled "Measuring Completeness of Coverage in the 1969 Census of Agriculture," in 1972 Proceedings of the Business and Economic Sections, American Statistical Association, August 1972.

The estimates are based upon the June Survey headquarters sample of farms and nonfarm places (farm operator or nonfarm persons living inside segment) reclassified on the basis of census farm definition. The estimates of coverage take the general form:

$$E' = Y - Y'_o + Y'_m$$

where

E' = Estimate of total farms as determined in the coverage check.

Y = Estimate of all farms included in the census.

Y'_o = Estimate of farms overcounted in the census.

Y'_m = Estimate of farms missed in the census.

The estimates of the proportion of farms included in the census are in the form:

$$\text{Percent included} = (Y/E') \times 100$$

The estimates of the proportion of net missed farms are in the form:

$$\text{Percent net missed} = \frac{Y'_m - Y'_o}{E'} \times 100$$

The estimate for total farms (E') is essentially the original June Survey direct expansion estimate minus places not qualifying as census farms plus June Survey nonfarm places reclassified as census farms.

The estimates for census acres and farms are based upon data from the final edited census data file used for data tabulation and reflect all processing and computer edit changes. The coverage checks in previous censuses used census acres as reported by respondents which were not necessarily the final figures used for tabulating the census.

Two estimation problems arose in preparing the coverage check estimates. One problem was the estimate of coverage for the census nonrespondent population. The procedure (previously described on page 3, Treatment of Nonrespondents) of replicating data from similar sized respondents to represent nonrespondents was used in the census. The census replication rate of in-scope farms at the U.S. level was about 35 percent of all nonrespondents. Of the coverage check units matched to census nonrespondents, about 80 percent were in-scope farms, based upon the June Survey characteristics. This difference can be explained in part by the fact that the census mailing list was composed of names and addresses associated with farm operations or suspected of being farm operators, wherein the June Enumerative Survey lists were primarily of persons who were already determined to be farm operators by June Enumerative Survey enumerators. In fact, it would have been expected that practically all June Survey cases matched to the census files were farms. Since the nonrespondent populations were greatly different, the Census replication rates could not be related directly to the sample estimates of nonrespondents. The estimates presented for number of farms in tables 1 and 7 include matches to all nonrespondents as included and overcounted in the census; however, the estimates do not directly reflect the effect of census replication. Use of this method assumes that census nonrespondents (if they had reported)

would correspond directly to the June Survey classification of farm or nonfarm and to the value of sales class indicated by the June Survey value code. The coverage estimates for acres in table 4 and number of farms by value of sales class, type, tenure, etc. in tables 2, 3, and 8 do not include adjustments for the nonrespondent matches. Nonrespondents are also excluded from the sampling reliability estimates in tables 10 and 11.

The adjustment procedure used in tables 1 and 7 was needed to distribute the nonrespondents by value of sales class since census records could not be related to the nonrespondent matched units. Inclusion of the nonrespondents provides more complete estimates of the entire census universe of farms. The procedure involved a separate tabulation of nonrespondent matches by the June Survey value code, which reflected the 1968 value of products sold. The distribution of the units by value code were related to sales class and corresponding adjustments were made for the nonrespondent match units in each State, division, and region. It is believed that this procedure does not introduce any large degree of bias in the estimates.

The second estimation problem involved the coverage check farms which matched small farms not included in the 50-percent census sample. Since the nonsample places did not receive a census report, no measure of the effect of mailing, processing, and respondent reaction was available. Therefore, matches to nonsample cases were not used and coverage check estimates include only the matched sample of the small farms which received census reports. This part of the sample is weighted to represent the small farm portion of the population.

COVERAGE CHECK RESULTS

Estimates of Census Coverage

Estimates of census coverage of farms are presented in tables 1, 2, and 3 for the United States and census regions, and in tables

7 and 8 for specified States. Estimates of census coverage of land in farms and the sampling error of these estimates are presented in table 4 by census region and division. The major characteristics of farms missed in the census are presented in tables 5 and 6 for the United States and census regions, and in table 9 for specified States. Estimates of sampling error are presented in tables 10 and 11.

The estimates in tables 1 and 7 are from the entire coverage sample and include adjustments for matches to census nonrespondents. The data presented in all tables other than 1 and 7 do not include the part of the coverage sample matched to nonrespondents and represent only those coverage units directly matched to census reports. In general, the estimates excluding nonrespondents indicate a lower level of census coverage, since all units matched to nonrespondents were assumed to be included in the census by virtue of the census replication procedure. The total group matched to nonrespondents is approximately 11 percent of the estimate of all farms included in the census. (See page 5, Estimation Procedure.)

Estimates of the components of coverage are presented in table 1 thru 4 and tables 7 and 8. The components of coverage are groups of farms included, overcounted, and missed in relation to the census. The overcounted farms are a part of the farms included in the census.

The coverage check estimates for number of farms by value of sale class are presented in table 1 and by value of sales class and type of farm in table 2 for the United States and census divisions. Estimates of farms \$2,500 and over and under \$2,500 value of sales are presented in tables 8 and 9 for specified States or State groups. The value of sales class is based upon 1969 census data for units included and overcounted in the census and 69-A90 data for units missed in the census. The 69-A90 value of sales class is assumed to be the same as would have been obtained if the operation had been included in the census.

The estimates in table A below and in table 1 indicate that 85 percent of all farms in the conterminous United States were

Table A. Estimates of Census Coverage and Sampling Error of Number of Farms by Value of Sales Group: United States

	All farms		Total value of products sold				
	Number	Standard error of estimate	\$2,500 and over		Under \$2,500		
			Number	Standard error of estimate	Number	Standard error of estimate	
Estimated total farms, number	1,000	2,708	31	1,586	20	1,122	23
Included in census:							
Number of farms	1,000	2,301	34	1,534	25	768	19
Percent of estimated total percent		85.0	—	96.7	—	68.4	—
Overcounted in census:							
Number of farms	1,000	70	5	51	3	19	4
Percent of estimated total percent		2.6	—	32	—	1.7	—
Missed in census:							
Number of farms	1,000	477	13	103	6	374	12
Percent of estimated total percent		17.6	—	6.5	—	33.3	—

Note: Data may not add to totals due to rounding. Coverage estimates include adjustments for nonrespondents; sampling error estimates do not include nonrespondents.

included in the census. Completeness of the census in the North Central States was somewhat greater (90.5 percent) than in other regions. The United States total underenumeration is represented by a missed farm rate of 17.6 percent and an overcount rate of 2.6 percent for a net missed rate of 15.0 percent. The estimated net missed rate for all farms was 11.3 percent in the 1964 census and 8.4 percent in 1959⁶. The missed farm rate for all farms with total value of products sold (TVP) \$2,500 and over was 6.5 percent and overcount rate was 3.2 percent for a net missed rate of 3.3 percent. For farms with TVP of under \$2,500, the missed farm rate was 33.3 percent and the overcount rate was 1.7 percent, for a net missed rate of 31.6 percent.

The net missed rate has been considerably greater for farms with TVP under \$2,500 than for the larger farms in all censuses for which coverage checks have been conducted. In earlier censuses the larger miss rate for small farms was explained in part by the difficulties experienced by enumerators in locating and identifying the smaller units. This was reflected in the larger miss rates for nonresident operators, operators living in urban enumeration districts, and operators with small acreages. In the 1969 census, the larger miss rate for small farms is accounted for largely by the composition of the mailing list. To the extent that small farm operators had no reason to file farm returns with IRS, did not participate in government programs administered by ASCS, or were not included on other lists they had no chance of appearing on the mailing list, and were, therefore, not included in the census.

The estimated number of units identified as overcounted in the census was about 70,000, or about 2.6 percent of the estimated total. Of these, about 15,000 were nonfarm places which were counted as farms in the census. About 16,000 were duplicated census reports for a single farm, and about 22,000 were represented by multiple census reports for parts of a single farm.

Multiple reports for parts of a farm arose in such instances as partners reporting separate parts of a farm, and husband and wife reporting different parts of the same place. The remaining 17,000 were represented by multiple census nonrespondents or a census report plus a nonrespondent. The only characteristics available for farms "overcounted" in the census were number of farms and acres in place. For that reason, it was not possible to make estimates of net undercoverage in the census for characteristics other than those two. In general, larger farms were more likely to be overcounted in the census. One reason for this is that they were more likely to appear on more than one source list with a different identification number on each list.

Characteristics of Missed Farms

This section and tables 5, 6, and 9 refer only to farms which should have been included in the census but were not. These are farms described as "missed in the census" on page 4, Coverage Check Processing Procedures. The missed farm data does not represent net error in the census because detailed data for the overcounted farms could not be derived in the coverage check

and reporting error on correctly counted farms was not measured. Although the missed farms probably represent the larger proportion of the total census error, the data presented do not represent net error.

The estimated total number of farms identified as missed in the census was about 477,000 (with sampling error of 2.7 percent) or 17.6 percent of the estimated total number of farms. The average size of the missed farms was 118 acres with an average of 21 acres of cropland harvested. The missed farms had an estimated total value of agricultural products sold of \$1.5 billion or about \$3,150 per missed farm. About 78 percent of the missed farms had value of products sold of under \$2,500. Most of the missed farms were operated by full owners (76 percent), with 12 percent being operated by part owners, and 12 percent operated by tenants.

It appears that a larger proportion of the livestock-type farms were missed in the census compared to crop-type farms. This could be attributed to the gain in coverage from use of the ASCS lists which are crop oriented or to a number of other factors.

Farms missed in the census were classified into three subgroups:

1. Coverage check farms not located on the census mailing list.
2. Coverage check farms on ASCS lists not included in the census mailing list. These were confined to specific States primarily in the North Central and Western regions.
3. Coverage check farms on the census mailing list which were classified as nonfarm in the census processing due to incomplete reporting or processing error.

About 76 percent of the total farms missed in the census were not located on the mailing list (group 1) and 24 percent were on the mailing list but were incomplete or misclassified in processing (group 3). In 20 North Central and Western States where ASCS names were not used in generating the mailing list, 61 percent of the farms missed were not on the mailing list or ASCS list, 16 percent were on the ASCS list only, and 23 percent were misclassified in processing.

According to the 1969 Census of Agriculture, 37 percent of the 2,730,250 farms enumerated in the census were farms with total value of products sold under \$2,500. These small farms had about 2 percent of the total \$45.6 billion total value of products sold for all census farms. The coverage check estimates show that more than three-fourths (78 percent) of the missed farms were in that class. Thus, the census coverage of farm production without considering the effect of over and under reporting of TVP in the census is estimated to be at least 97 percent for total value of products sold. This compares with the net 85-percent coverage for total number of farms. Table B shows estimates of census coverage for farms and TVP by value of sales class. It should be noted that a direct estimate for TVP was not made and the data in the table are indications using the procedure described in the footnote.

⁶ For more detailed description see reference in footnote 2.

Table B. Comparison of Census Coverage of Farms and Value of Products by Value of Sales Class: United States

(Includes adjustments for nonrespondents)

	Net percent of coverage	
	Number of farms	Total value of products ¹ (TVP)
All farms	85.0	96.6
Class 1 - 5:		
Sales of \$2,500 and over	96.7	97.1
Class 6 - 8:—		
Sales of under \$2,500	68.4	73.5

¹ Estimates are based upon census TVP class group averages applied to coverage estimates of number of farms included in the census plus sample estimates of TVP for missed farms. They do not reflect possible over and under reporting of TVP for farms included in the census, nor the contributions of errors in processing.

Other Results

As stated on page 1, Objective of the 1969 Coverage Check, one of the objectives was to evaluate the quality and

characteristics of sources for the census mailing list. Two studies have been completed. One analyzes the sources from the point of view of the number of farms each of them contributed to the census; the other analyzes the sources from the point of view of the relationship of the measure of size provided by the source to the total value of products (TVP) reported in the census. The study reported on here is the analysis of the contribution of farms to the census by source.

Table C shows estimates for the United States by mailing list source or source combination and whether a report for the coverage farm included in the census was matched to one address or more included in the census mailing list.

The stub of the table gives the mailing list sources and source combinations for farms included in the census. It is apparent that no one source was adequate for determining the mailing list. The largest contributor of names and addresses of farms included in the census were sources available from the Internal Revenue Service. These accounted for about 89 percent of the farms. However, some of the sources providing relatively small numbers of farms accounted for a high proportion of the total value of products. Lines showing Precanvass (PC) Only and MID Only account for the majority of these.

Due to the fact that several different sources were used in accumulation of the mailing list and to the ambiguousness of some of the identifying information, on occasion more than one

Table C. Coverage Check Farms Included in the Census by Mail List Sources: United States

	Total farms included in census		Included in the census			
	Number	Percent of all farms	Matched to one census record		Matched to two or more census records	
			Number	Percent of all farms	Number	Percent of all farms
All farms	2,243,066	100.0	1,872,667	100.0	370,399	100.0
Precanvass (PC) only	1,246	.1	1,061	.1	185	—
MID only ¹	58,668	2.6	54,067	2.9	4,601	1.2
1040 F and C only	402,393	17.9	388,750	20.7	13,643	3.7
ASCS only	245,232	10.9	231,964	12.4	13,268	3.6
P.C. and MID	7,021	.3	5,566	.3	1,455	.4
P.C. and 1040 F and C	266	—	105	—	161	—
P.C. and ASCS	251	—	196	—	55	—
MID and 1040 F and C	60,637	2.7	19,971	1.1	40,666	11.0
MID and ASCS	35,198	1.6	10,727	.6	24,471	6.6
1040 F and C, and ASCS	1,137,780	50.7	1,061,469	56.6	76,311	20.6
P.C., MID and 1040 F and C	4,284	.2	2,284	.1	2,000	.5
P.C., MID and ASCS	5,759	.3	3,470	.2	2,289	.6
P.C., 1040 F and C, and ASCS	1,549	.1	1,541	.1	8	—
MID, 1040 F and C and ASCS	279,599	12.5	91,316	4.9	188,283	50.8
All sources	3,183	.1	180	—	3,003	.8

Note: The total farms included in the census is in slight disagreement with other tables due to computer programming differences. Includes adjustments for nonrespondents.

¹ The MID list was a combination of units from the 1065, 1120S and 943 file.

report form was mailed to some respondents who should have completed only one form. Instructions were given to each such respondent to complete only one of the forms and return the other one blank. In some cases this instruction was not followed. The last two columns of the table give estimates by mailing list source of the number of times a census farm appeared on the mailing list after unduplication. To the extent that a farm submitted more than one report and was not discovered in processing, the result could have been a duplication in the data file. Duplication is discussed in Estimates of Census Coverage.

In the matching operation, farms in the coverage check sample were matched against all names on the mailing list. The second through the fifth columns give the results of the match.

Accuracy of the Estimates

Estimates of sampling variability, expressed as standard errors are presented in tables 4, 10, and 11. The chances are about two out of three that the difference between an estimate based on the coverage check sample and the figure that would have been obtained by applying the coverage check procedures to all farms would be less than the sampling error shown. The chances are about 95 out of 100 that this difference would be less than 2 times the sampling error.

All estimates of sampling variability exclude matches to census nonrespondents. The standard error for the coverage check estimates of total number of farms expressed as percent of estimated total, ranges between 4.8 percent and 14.5 percent at the State level; 2.2 percent and 6.6 percent at the census division level; and is 1.3 percent at the United States level. The standard error for estimates of acres range from 4.0 percent to 13.5 percent for division level data, and is 3.8 percent for the United States. Sampling errors were not computed directly for the "included in census" component; however, they are approximately equal to the sampling error of the estimated total. The estimates of sampling error for the overcounted farms are based upon a very small number of observations and are not considered reliable. Coverage estimates are presented for census division or State groups where individual State estimates are not considered reliable.

There are several aspects of the coverage check procedures and sample design which make it probable that the estimates of net error are somewhat larger than the actual undercount. First, the difficulty of carrying out searching and matching procedures was great, and some of the census farms corresponding to coverage check farms may not have been located.

The search for coverage check farms was usually limited to the five digit ZIP code area within the specified county, with the search for missed farms expanded to cover adjacent counties and ZIP code areas. An intensive study of missed farms in Washington and Oregon using the complete IRS files as an added information source indicated about 5 percent of the farms classified as missed were in fact included in the census (See Special Census Evaluation).

Second, once a census farm corresponding to a coverage check farm was located, there was no systematic attempt to search the

census files further for duplicate report forms, so that some cases of duplication in the census may have been overlooked. Duplicate cases which were found were normally adjacent in the file and in the same ZIP code area. To make a thorough search would have been costly in terms of both time and money, as it would have been necessary in all matched cases, to make additional checks in adjacent ZIP code areas and counties.

The quantitative estimates from the coverage check sample are low in relation to data from other sources. Examples are the coverage check estimates of 2.7 million total farms compared to the USDA official estimates of 2,994,000 farms and the coverage estimate of 2.3 million farms included in the census compared to 2.7 million farms counted in the census. The primary reasons for this low level of the quantitative estimates appear to be factors involving the sample design of the June Survey and the difference between enumeration dates for the census and the June Enumerator Survey.

The measurement base used for the coverage check was the June Survey area sample of farm operators living inside the segment boundaries. Although the June Survey contains some urban segments, there are indications that the part of the sample used for the coverage check may underrepresent farms operated by persons not living on the farms they operate. A special tabulation of farms in the coverage sample by residence was made for all States and compared to census counts. The census data indicated about 19 percent of the farm operators did not live on their farms. The data for coverage check farm operators included in the census indicated about 9 percent did not live on their farms. The proportion of nonresident operators for coverage check farms missed in the census was about the same as for those included.

The enumeration for the June Survey took place in the latter part of June 1969, while the census data were collected during the first few months in 1970. The difference in reporting date caused some matching difficulties when farms were sold, operators moved to different farms, or operators died. In general, farms "dropped out" of the base sample as a result of these situations and there was no practical method available to add "new farms" into the base sample. The number of farms affected by the difference in dates has not been determined from the coverage sample; however, a previous study made in connection with the 1965 Sample Survey of Agriculture indicated about 5 percent of the farms had changes of ownership or operators during a 1-year period.

The net result of the nonresident and enumeration date problems is that a portion of the farms in the universe had an inadequate chance for inclusion in the base sample which resulted in an incomplete measurement of the census.

SPECIAL CENSUS EVALUATION

Special Studies

Several special studies were conducted in connection with the 1969 Coverage Check. Among these were studies of the accuracy of reporting of livestock inventories; underreporting of soybean and hay crops in the census; and evaluation of the accuracy of the administrative list size indicators compared to

the size reported in the census. The results of these studies will be used primarily for planning future censuses.

An additional study was the administrative record study of missed farms in Washington and Oregon. The Internal Revenue Service (IRS) record check study was initiated in an attempt to determine possible reasons for the large decrease in the number of farms reported between the 1964 and 1969 censuses in Washington and Oregon (see table D). Although other administrative source lists were used, only the IRS file was used in this study since it was the source of the majority (about 78 percent) of the 1969 census mail list names in the United States.

Table D. Number of 1969 and 1964 Census Farms by Total Value of Products Sold Group: Washington and Oregon

	Washington		Oregon	
	1969	1964	1969	1964
All farms:				
Number	34,033	45,574	29,063	39,757
Percent change 1964 to 1969	-25.3	-	-26.9	-
Total value of products sold:				
Under \$2,500:				
Number	12,245	22,643	12,060	21,772
Percent change 1964 to 1969 ..	-45.9	-	-44.6	-
\$2,500 and over:				
Number	21,788	22,931	17,003	17,985
Percent change 1964 to 1969 ..	-5.0	-	-5.5	-

The basis for the study was the "missed farm" group from the 1969 Census Coverage Check sample. There were originally 189 unweighted missed farms (106 in Washington and 83 in Oregon) out of the total 895 farms in the coverage check sample in the two States. Missed farms are places which were classified as agricultural in the coverage check which were not included on the census mailing lists or were classified as out of scope in the census processing. Estimates of census coverage for the two States are presented in table 7.

General

The 189 missed sample farms were matched against IRS files at the Western Service Center in Ogden, Utah to obtain Document Locator Number (DLN) and the indication of the type of form filed. All work was performed under the Census-IRS agreement which insures that the strict confidentiality requirements of both agencies are observed. No data relating to an individual tax filer or census respondent are made available except in the form of statistical totals. The totals are reviewed prior to release to insure that there is no disclosure.

Copies of the IRS files were then reviewed for all farms with individual business or farm returns along with coverage check materials in an effort to determine the reason for exclusion from the census mail lists.

Results

The distribution of the original 189 missed farms in relation to the IRS files is presented in table E. About 76 percent of the missed farms were not included on lists obtained from IRS because the persons filing gave no identified indication of agriculture activities, about 8 percent of the missed farms were not on the census mailing list but should have been, and about 11 percent were excluded from the census because of response or processing error. The remaining 5 percent classified as missed, represent inadequacies in the coverage check matching procedure or incompleteness of information used for matching.

Table E. Coverage-Check Missed Farms by Match Status and Relationship to IRS Files: Washington and Oregon

	Number	Percent
Not on census mailing list—Not justified	15	7.9
Filed farm return (schedule 1040 F)	8	
Filed business return (schedule 1040 C) with some farm activity	5	
Information not received from IRS	2	
Not on census mailing list—Justified	144	76.2
Filed business return (nonfarm schedule C)	10	
Filed individual return (schedule 1040)	92	
Not located on IRS file in 1968 or 1969	42	
On census mailing but matched to census out of scope	20	10.6
On census mailing list but located after IRS search.	10	5.3
Total	189	100.0

Almost half (92) of the 189 farms filed only individual returns (form 1040). Two farms in this group had a total value of products (TVP) sold over \$2,500 as indicated by coverage check material. One of these farms had timber sales as the primary source of farm income and the other had cattle income. Seven other small farms (under \$2,500) in this group had some entry relating to agriculture income (see table F).

Table F. Coverage-Check Missed Farms Filing Individual Returns in 1968 and/or 1969, by State and Value of Products: Washington and Oregon

	Total	Washington: Total value of products of—		Oregon: Total value of products of—	
		Under \$2,500	\$2,500 and over	Under \$2,500	\$2,500 and over
IRS individual return with at least one agriculture item	10	3	1	5	1
IRS individual return no agriculture	82	48	—	34	—
Total	92	51	1	39	1

Twenty-five of the 150 sample farms not on the mailing list filed a business or farm return (1040 C or F) in 1968 and 1969. The characteristics of these cases in relation to the IRS files are presented in table G.

Only 8 (4.2 percent of all missed farms) of the 25 farms in this group filed a Schedule "F". These are cases which ordinarily should have been included in the mailing list, but were not. Six of the eight had indications as being late returns, correspondence or audit cases which may be the reason for exclusion from the census mail lists. Five of the 25 farms with business or farm returns filed Schedule "C" with some agriculture related activity. Three of these five agricultural related activities may have been considered nonfarm according to SIC criteria.

Conclusion

The decrease in the published census count of farms between 1964 and 1969 in Washington and Oregon appeared to have had a significant component due to undercoverage in 1969 and a smaller part due to response and processing error in addition to the actual decline in number of farms. Most of the missed farms (86 percent) in Washington and Oregon had value of products of under \$2,500. The farms are very small, marginal operations (usually livestock and hay) and most of the products are probably for home use. Off-farm wages or retirement income were often reported. Apparently, there was little farm income

or expenditures which qualified for reporting to IRS. There is no indication that a major part of the intended IRS file was excluded from the census mailing list. Use of ASCS list would improve coverage somewhat; however, it is doubtful that the use of administrative records currently available to us will have much effect in improving census coverage of small farms (TVP < \$2,500).

Table G. Coverage-Check Missed Farms With IRS Business and/or Farm Returns in 1968 and/or 1969 State and Total Value of Products: Washington and Oregon

	Total	Washington: Total value of products of—		Oregon: Total value of products of—	
		\$2,500		\$2,500	
		Under \$2,500	and over	Under \$2,500	and over
Filed Form 1040 "F"	8	—	3	2	3
Filed Form 1040 "C" with some agriculture related activity . . .	5	2	1	2	—
Filed 1040 "C" nonfarm	10	6	—	4	—
IRS form not received	2	1	—	1	—
Total	25	9	4	9	3

Table 1. Number of Farms by Components of Coverage by Value of Sales Class

(Includes adjustments for nonrespondents)

	Estimated total farms	Included in census		Overcounted in census.		Missed in census	
		Number of farms	Percent of estimated total	Number of farms	Percent of estimated total	Number of farms	Percent of estimated total
United States							
All farms	2,707,905	2,301,428	85.0	70,193	2.6	476,670	17.6
Class 1-5—Sales of \$2,500 and over	1,585,713	1,533,743	96.7	50,725	3.2	102,695	6.5
Class 1—Sales of \$40,000 and over	229,162	231,728	101.1	8,881	3.9	6,315	2.8
Class 2—Sales of \$20,000 to \$39,999	302,758	303,948	100.4	11,460	3.8	10,270	3.4
Class 3—Sales of \$10,000 to \$19,999	360,594	356,604	98.9	11,960	3.3	15,950	4.4
Class 4—Sales of \$5,000 to \$9,999	339,609	321,118	94.6	9,481	2.8	27,972	8.2
Class 5—Sales of \$2,500 to \$4,999	353,590	320,345	90.6	8,943	2.5	42,188	11.9
Class 6-8—Sales of under \$2,500	1,122,192	767,685	68.4	19,468	1.7	373,975	33.3
Class 6	229,318	156,730	69.2	2,587	1.1	73,175	31.9
Class 7—Part time	601,303	416,323	69.2	13,236	2.2	198,216	33.0
Class 8—Part retirement	291,571	192,632	66.1	3,645	1.3	102,584	35.2
The Northeast							
All farms	177,765	145,368	81.8	6,746	3.8	39,143	22.0
Class 1-5—Sales of \$2,500 and over	94,223	90,222	95.8	3,197	3.4	7,198	7.6
Class 1—Sales of \$40,000 and over	19,645	18,740	95.4	942	4.8	1,847	9.4
Class 2—Sales of \$20,000 to \$39,999	26,152	26,040	99.6	789	3.0	901	3.4
Class 3—Sales of \$10,000 to \$19,999	21,733	20,705	95.3	1,003	4.6	2,031	9.3
Class 4—Sales of \$5,000 to \$9,999	13,180	12,343	93.6	144	1.1	981	7.4
Class 5—Sales of \$2,500 to \$4,999	13,513	12,394	91.7	319	2.4	1,438	10.6
Class 6-8—Sales of under \$2,500	83,542	55,146	66.0	3,549	4.2	31,945	38.2
Class 6	10,253	7,030	68.6	110	1.1	3,333	32.5
Class 7—Part time	52,069	33,285	63.9	2,448	4.7	21,232	40.8
Class 8—Part retirement	21,220	14,831	69.9	991	4.7	7,380	34.8
The North Central							
All farms	1,143,192	1,034,984	90.5	26,426	2.3	134,634	11.8
Class 1-5—Sales of \$2,500 and over	826,715	804,704	97.3	22,053	2.7	44,064	5.3
Class 1—Sales of \$40,000 and over	111,338	113,122	101.6	3,634	3.3	1,850	1.7
Class 2—Sales of \$20,000 to \$39,999	181,378	181,840	100.3	6,305	3.5	5,843	3.2
Class 3—Sales of \$10,000 to \$19,999	218,503	216,121	98.9	4,977	2.3	7,359	3.4
Class 4—Sales of \$5,000 to \$9,999	172,213	161,819	94.0	3,209	1.9	13,603	7.9
Class 5—Sales of \$2,500 to \$4,999	143,283	131,802	92.0	3,928	2.7	15,409	10.7
Class 6-8—Sales of under \$2,500	316,477	230,280	72.8	4,373	1.4	90,570	28.6
Class 6	46,096	35,348	76.7	-	-	10,748	23.3
Class 7—Part time	188,398	140,928	74.8	4,373	2.3	51,843	27.5
Class 8—Part retirement	81,983	54,004	65.9	-	-	27,979	34.1
The South							
All farms	1,131,662	909,396	80.4	30,485	2.7	252,751	22.3
Class 1-5—Sales of \$2,500 and over	493,649	475,085	96.2	19,409	3.9	37,973	7.7
Class 1—Sales of \$40,000 and over	59,965	61,153	102.0	2,795	4.7	1,607	2.7
Class 2—Sales of \$20,000 to \$39,999	62,568	62,812	100.4	2,740	4.4	2,496	4.0
Class 3—Sales of \$10,000 to \$19,999	84,309	84,369	100.1	4,410	5.2	4,350	5.2
Class 4—Sales of \$5,000 to \$9,999	122,916	118,619	96.5	5,540	4.5	9,837	8.0
Class 5—Sales of \$2,500 to \$4,999	163,891	148,132	90.4	3,924	2.4	19,683	12.0
Class 6-8—Sales of under \$2,500	638,013	434,311	68.1	11,076	1.7	214,778	33.7
Class 6	162,076	111,005	68.5	2,477	1.5	53,548	33.0
Class 7—Part time	303,384	209,799	69.2	6,363	2.1	99,948	32.9
Class 8—Part retirement	1,172,553	113,507	65.8	2,236	1.3	61,282	35.5
The West¹							
All farms	255,286	211,680	82.9	6,536	2.6	50,142	19.6
Class 1-5—Sales of \$2,500 and over	171,126	163,732	95.7	6,066	3.5	13,460	7.9
Class 1—Sales of \$40,000 and over	38,214	38,713	101.3	1,510	4.0	1,011	2.6
Class 2—Sales of \$20,000 to \$39,999	32,660	33,256	101.8	1,626	5.0	1,030	3.2
Class 3—Sales of \$10,000 to \$19,999	38,049	35,409	93.2	1,570	4.4	2,210	6.1
Class 4—Sales of \$5,000 to \$9,999	31,300	28,337	90.5	588	1.9	3,551	11.3
Class 5—Sales of \$2,500 to \$4,999	32,903	28,017	85.2	772	2.3	5,658	17.2
Class 6-8—Sales of under \$2,500	84,160	47,948	57.0	470	0.6	36,682	43.6
Class 6	10,893	5,347	49.1	-	-	5,546	50.9
Class 7—Part time	57,452	32,311	56.2	52	0.1	25,193	43.9
Class 8—Part retirement	15,815	10,290	65.1	418	2.6	5,943	37.6

Note: Includes an estimated 1,261 abnormal farms. Figures are estimates based on a sample and are subject to sampling errors. See tables 10 and 11. Data is also subject to nonsampling errors which result in differences in census farm counts and coverage check estimated farm counts. See text, Accuracy of Estimates.

¹Does not include data for Alaska and Hawaii.

Evaluation of Coverage

Table 2. Number of Farms by Components of Coverage by Value of Sales Class and Type of Farm

(Excludes adjustments for nonrespondents)

	Estimated total farms	Included in census		Overcounted in census		Missed in census	
		Number of farms	Percent of estimated total	Number of farms	Percent of estimated total	Number of farms	Percent of estimated total
United States							
All farms	2,462,322	2,039,550	82.8	53,898	2.2	476,670	19.4
Class 1-5—Sales of \$2,500 and over	1,435,593	1,371,626	95.5	38,728	2.7	102,695	7.2
Class 1—Sales of \$40,000 and over	211,234	210,605	99.7	5,686	2.7	6,315	3.0
Class 2—Sales of \$20,000 to \$39,999	276,516	274,433	99.3	8,187	3.0	10,270	3.7
Class 3—Sales of \$10,000 to \$19,999	324,530	317,705	97.9	9,125	2.8	15,950	4.9
Class 4—Sales of \$5,000 to \$9,999	303,047	283,087	93.4	8,012	2.6	27,972	9.2
Class 5—Sales of \$2,500 to \$4,999	320,266	285,796	89.3	7,718	2.5	42,188	13.2
Class 6-8—Sales of under \$2,500	1,026,729	667,924	65.1	15,170	1.5	373,975	36.4
Class 6	210,736	139,594	66.3	2,033	1.0	73,175	34.7
Class 7—Part time	548,319	360,565	65.8	10,462	1.9	198,216	36.1
Class 8—Part retirement	267,674	167,765	62.7	2,675	1.0	102,584	38.3
Farms with sales of \$2,500 and over by type of farm, total	1,435,593	1,371,626	95.5	38,728	2.7	102,695	7.2
Cash-grain	290,731	287,462	98.9	10,745	3.7	14,014	4.8
Tobacco	79,520	73,185	92.0	2,713	3.4	9,048	11.4
Cotton	27,612	27,612	100.0	1,088	3.9	1,088	3.9
Other field-crop	22,142	21,842	98.7	742	3.4	1,042	4.7
Vegetable	18,244	17,170	94.1	209	1.1	1,283	7.0
Fruit and nut	35,313	33,481	94.8	959	2.7	2,791	7.9
Poultry	49,586	47,542	95.9	332	0.7	2,376	4.8
Dairy	235,728	226,678	96.2	5,542	2.4	14,592	6.2
Livestock other than poultry and dairy; livestock ranches	537,507	502,292	93.4	13,001	2.4	48,216	9.0
General	115,740	113,919	98.4	3,054	2.6	4,875	4.2
Miscellaneous	23,470	20,443	87.1	343	1.5	3,370	14.4
The Northeast							
All farms	154,900	120,193	77.6	4,436	2.9	39,143	25.3
Class 1-5—Sales of \$2,500 and over	82,772	77,725	93.9	2,151	2.6	7,198	8.7
Class 1—Sales of \$40,000 and over	18,421	17,405	94.5	831	4.5	1,847	10.0
Class 2—Sales of \$20,000 to \$39,999	23,168	22,678	97.9	411	1.8	901	3.9
Class 3—Sales of \$10,000 to \$19,999	18,344	16,883	92.0	570	3.1	2,031	11.1
Class 4—Sales of \$5,000 to \$9,999	11,001	10,164	92.4	144	1.3	981	8.9
Class 5—Sales of \$2,500 to \$4,999	11,838	10,595	89.5	195	1.6	1,438	12.1
Class 6-8—Sales of under \$2,500	72,128	42,468	58.9	2,285	3.2	31,945	44.3
Class 6	8,676	5,414	62.4	71	0.8	3,333	38.4
Class 7—Part time	45,288	29,632	36.6	1,576	3.5	21,232	46.9
Class 8—Part retirement	18,164	11,422	62.9	638	3.5	7,380	40.6
Farms with sales of \$2,500 and over by type of farm, total	82,772	77,725	93.9	2,151	2.6	7,198	8.7
Cash-grain	2,734	2,485	90.9	-	-	249	9.1
Tobacco	-	-	-	-	-	-	-
Cotton	-	-	-	-	-	-	-
Other field-crop	1,837	1,832	99.7	76	4.1	81	4.4
Vegetable	1,893	1,956	103.3	99	5.2	36	1.9
Fruit and nut	3,445	3,202	92.9	-	-	243	7.1
Poultry	6,350	6,047	95.2	61	1.0	364	5.8
Dairy	48,478	46,495	96.2	1,555	3.2	3,538	7.0
Livestock other than poultry and dairy; livestock ranches	9,485	8,604	90.7	124	1.3	1,005	10.6
General	4,802	4,837	100.7	53	1.1	18	0.4
Miscellaneous	3,748	2,267	60.5	183	4.9	1,664	44.4
The North Central							
All farms	1,033,990	919,559	88.9	20,203	1.9	134,634	13.0
Class 1-5—Sales of \$2,500 and over	754,573	726,898	96.3	16,389	2.2	44,064	5.8
Class 1—Sales of \$40,000 and over	103,595	103,833	100.2	2,088	2.0	1,850	1.8
Class 2—Sales of \$20,000 to \$39,999	167,826	166,642	99.3	4,659	2.8	5,843	3.5
Class 3—Sales of \$10,000 to \$19,999	197,911	194,312	98.2	3,760	2.0	7,359	3.8
Class 4—Sales of \$5,000 to \$9,999	155,708	144,508	92.8	2,403	1.5	13,603	8.7
Class 5—Sales of \$2,500 to \$4,999	128,533	117,603	90.8	3,479	2.7	15,409	11.9
Class 6-8—Sales of under \$2,500	279,417	192,661	69.0	3,814	1.4	90,570	32.4
Class 6	40,321	29,573	73.3	-	-	10,748	26.7
Class 7—Part time	165,935	117,906	71.1	3,814	2.3	51,843	31.2
Class 8—Part retirement	73,161	45,182	61.8	-	-	27,979	38.2
Farms with sales of \$2,500 and over by type of farm, total	754,573	726,898	96.3	16,389	2.2	44,064	5.8
Cash-grain	217,480	215,611	99.2	8,018	3.7	9,887	4.5
Tobacco	2,074	2,074	100.0	-	-	-	-
Cotton	546	1,092	200.0	546	100.0	-	-
Other field-crop	2,387	2,530	106.0	143	6.0	-	-
Vegetable	4,205	3,554	84.5	-	-	651	15.5
Fruit and nut	4,990	4,990	100.0	-	-	-	-
Poultry	8,988	8,674	96.5	-	-	314	3.5
Dairy	141,471	134,983	95.4	2,002	1.4	8,490	6.0
Livestock other than poultry and dairy; livestock ranches	316,756	289,392	91.4	4,953	1.6	22,317	7.1
General	47,278	46,680	98.7	727	1.5	1,325	2.8
Miscellaneous	8,398	7,318	87.1	-	-	1,080	12.9

Note: Includes an estimated 1,261 abnormal farms. Figures are estimates based on a sample and are subject to sampling errors. See tables 10 and 11. Data is also subject to nonsampling errors which result in differences in census farm counts and coverage check estimated farm counts. See text, Accuracy of the Estimates.

Evaluation of Coverage

Table 2. Number of Farms by Components of Coverage by Value of Sales Class and Type of Farm—Continued

(Excludes adjustments for nonrespondents)

	Estimated total farms	Included in census		Overcounted in census		Missed in census	
		Number of farms	Percent of estimated total	Number of farms	Percent of estimated total	Number of farms	Percent of estimated total
The South							
All farms	1,041,377	813,142	78.0	24,516	2.3	252,751	24.3
Class 1-5—Sales of \$2,500 and over	444,298	422,069	95.0	15,744	3.5	37,973	8.5
Class 1—Sales of \$40,000 and over	54,292	54,425	100.2	1,740	3.2	1,607	3.0
Class 2—Sales of \$20,000 to \$39,999	56,209	55,570	98.9	1,857	3.3	2,496	4.4
Class 3—Sales of \$10,000 to \$19,999	75,881	75,245	99.2	3,714	4.9	4,350	5.7
Class 4—Sales of \$5,000 to \$9,999	108,745	103,928	95.6	5,020	4.6	9,837	9.0
Class 5—Sales of \$2,500 to \$4,999	149,171	132,901	89.1	3,413	2.3	19,683	13.2
Class 6-8—Sales of under \$2,500	597,079	391,073	65.5	8,772	1.5	214,778	36.0
Class 6	151,540	99,954	66.0	1,962	1.3	53,548	35.3
Class 7—Part time	283,821	188,912	66.6	5,039	1.8	99,948	35.2
Class 8—Part retirement	161,718	102,207	63.2	1,771	1.1	61,262	37.9
Farms with sales of \$2,500 and over by type of farm, total	444,298	422,069	95.0	15,744	3.5	37,973	8.5
Cash-grain	47,446	46,634	98.3	1,901	4.0	2,713	5.7
Tobacco	77,446	71,111	91.8	2,713	3.5	9,048	11.7
Cotton	24,848	24,315	97.9	475	1.9	1,008	4.0
Other field-crop	11,867	11,822	99.6	523	4.4	568	4.8
Vegetable	7,192	6,881	95.6	110	1.5	421	5.9
Fruit and nut	4,651	4,109	88.3	220	4.7	762	16.3
Poultry	31,964	30,575	95.6	271	0.8	1,660	5.2
Dairy	32,602	32,372	99.2	1,547	4.7	1,777	5.5
Livestock other than poultry and dairy; livestock ranches	151,896	141,057	92.9	6,513	4.3	17,352	11.4
General	46,852	46,060	98.3	1,471	3.1	2,263	4.8
Miscellaneous	7,534	7,133	94.7	-	-	401	5.3
The West¹							
All farms	232,055	186,656	80.4	4,743	2.0	50,142	21.6
Class 1-5—Sales of \$2,500 and over	153,950	144,934	94.2	4,444	2.9	13,460	8.7
Class 1—Sales of \$40,000 and over	34,926	34,942	100.1	1,027	3.0	1,011	2.9
Class 2—Sales of \$20,000 to \$39,999	29,313	29,543	100.8	1,260	4.3	1,030	3.5
Class 3—Sales of \$10,000 to \$19,999	32,394	31,265	96.5	1,081	3.3	2,210	6.8
Class 4—Sales of \$5,000 to \$9,999	27,593	24,487	88.7	445	1.6	3,551	12.9
Class 5—Sales of \$2,500 to \$4,999	29,724	24,697	83.1	631	2.1	5,658	19.0
Class 6-8—Sales of under \$2,500	78,105	41,722	53.4	299	0.4	36,682	47.0
Class 6	10,199	4,653	45.6	-	-	5,546	54.4
Class 7—Part time	53,275	28,115	52.8	33	0.1	25,193	47.3
Class 8—Part retirement	14,631	8,954	61.2	266	1.8	5,943	40.6
Farms with sales of \$2,500 and over by type of farm, total	153,950	144,934	94.1	4,444	2.9	13,460	8.8
Cash-grain	23,071	22,732	98.5	826	3.6	1,165	5.1
Tobacco	-	-	-	-	-	-	-
Cotton	2,218	2,205	99.4	67	3.0	80	3.6
Other field-crop	6,051	5,658	93.5	-	-	393	6.5
Vegetable	4,954	4,779	96.5	-	-	175	3.5
Fruit and nut	22,227	21,180	95.3	739	3.3	1,786	8.0
Poultry	2,284	2,246	98.3	-	-	38	1.7
Dairy	13,177	12,828	97.3	438	3.3	787	6.0
Livestock other than poultry and dairy; livestock ranches	59,370	53,239	89.7	1,411	2.4	7,542	12.7
General	16,808	16,342	97.2	803	4.8	1,269	7.6
Miscellaneous	3,790	3,725	98.3	160	4.2	225	5.9

Note: Includes an estimates 1,261 abnormal farms. Figures are estimates based on a sample and are subject to sampling errors. See tables 10 and 11. Data is also subject to nonsampling errors which result in differences in census farm counts and coverage check estimated farm counts. See text, Accuracy of the Estimates.

¹Does not include data for Alaska and Hawaii.

Evaluation of Coverage

1969 Census of Agriculture
United States and Regions

Table 3. Number of Farms by Components of Coverage by Tenure and Size; Age and Residence of Operator

(Excludes adjustments for nonrespondents)

	Estimated total farms	Included in census		Overcounted in census		Missed in census	
		Number of farms	Percent of estimated total	Number of farms	Percent of estimated total	Number of farms	Percent of estimated total
United States							
All farms	2,462,322	2,039,550	82.8	53,898	2.2	476,670	19.4
Farms by tenure:							
Full owner	1,544,731	1,217,750	78.8	35,983	2.3	362,964	23.5
Part owner	625,550	579,952	92.7	10,610	1.7	56,208	9.0
Tenant	292,041	241,848	82.8	7,305	2.5	57,498	19.7
Farms by size:							
Under 10 acres	129,673	69,952	53.9	1,892	1.4	61,613	47.5
10 to 49 acres	516,082	330,740	64.1	9,389	1.8	194,731	37.7
50 to 99 acres	439,942	353,144	80.3	10,949	2.5	97,747	22.2
100 to 219 acres	597,090	539,129	90.3	10,450	1.8	68,411	11.5
220 to 499 acres	474,560	447,302	94.3	11,279	2.4	38,537	8.1
500 acres and over	304,975	299,283	98.1	9,939	3.3	15,631	5.2
Farms by age of operator:							
Under 25 years	28,121	23,666	84.2	165	0.6	4,620	16.4
25 to 34 years	217,143	196,562	90.5	7,201	3.3	27,782	12.8
35 to 44 years	426,263	375,728	88.1	8,489	2.0	59,024	13.8
45 to 54 years	623,474	570,477	91.5	13,797	2.2	66,794	10.7
55 to 64 years	570,238	529,579	92.9	15,301	2.7	55,960	9.8
65 years and over	348,727	297,154	85.2	8,324	2.4	59,897	17.2
Not reported	248,356	46,384	18.7	621	0.3	202,593	81.6
Farms by residence of operator:							
Lives on place	1,881,393	1,680,940	89.3	39,726	2.1	240,179	12.8
Lives off place	181,708	158,809	87.4	7,768	4.3	30,667	16.9
Not reported	399,221	199,801	50.0	6,404	1.6	205,824	51.6
The Northeast							
All farms	154,900	120,193	77.6	4,436	2.9	39,143	25.3
Farms by tenure:							
Full owner	110,457	79,533	72.0	3,451	3.1	34,375	31.1
Part owner	36,910	35,338	95.7	879	2.3	2,451	6.6
Tenant	7,533	5,322	70.6	106	1.4	2,317	30.8
Farms by size:							
Under 10 acres	7,101	4,849	68.2	884	12.4	3,136	44.2
10 to 49 acres	33,416	16,017	47.9	1,382	4.1	18,781	56.2
50 to 99 acres	34,994	27,866	79.6	601	1.7	7,794	22.1
100 to 219 acres	43,387	37,561	86.6	568	1.3	6,394	14.7
220 to 499 acres	28,523	26,453	92.7	566	2.0	2,636	9.3
500 acres and over	7,479	7,447	99.6	435	5.8	467	6.2
Farms by age of operator:							
Under 25 years	2,476	1,964	79.3	-	-	512	20.7
25 to 34 years	11,728	10,187	86.9	398	3.4	1,939	16.5
35 to 44 years	30,419	26,398	86.7	1,839	6.0	5,860	19.3
45 to 54 years	38,906	30,519	78.4	401	1.0	8,788	22.6
55 to 64 years	35,219	30,183	85.7	704	2.0	5,740	16.3
65 years and over	23,160	18,790	81.1	1,094	4.7	5,464	23.6
Not reported	12,992	2,152	16.6	-	-	10,840	83.4
Farms by residence of operator:							
Lives on place	128,509	105,244	81.9	2,721	2.1	25,986	20.2
Lives off place	7,046	6,315	89.6	1,153	16.4	1,884	26.8
Not reported	19,345	8,634	44.6	562	2.9	11,273	58.3
The North Central							
All farms	1,033,990	919,559	88.9	20,203	1.9	134,634	13.0
Farms by tenure:							
Full owner	591,654	501,710	84.8	12,341	2.1	102,285	17.3
Part owner	301,428	290,773	96.4	4,362	1.4	15,017	5.0
Tenant	140,908	127,076	90.2	3,500	2.5	17,332	12.3
Farms by size:							
Under 10 acres	32,603	16,402	50.3	-	-	16,201	49.7
10 to 49 acres	132,957	87,482	65.8	1,276	1.0	46,751	35.2
50 to 99 acres	153,239	133,436	87.1	5,756	3.8	25,559	16.7
100 to 219 acres	285,900	267,557	93.6	3,231	1.1	21,574	7.5
220 to 499 acres	277,014	261,844	94.5	4,977	1.8	20,147	7.3
500 acres and over	152,277	152,838	100.4	4,963	3.3	4,402	2.9
Farms by age of operator:							
Under 25 years	13,835	12,045	87.1	-	-	1,790	12.9
25 to 34 years	113,284	106,199	93.7	3,944	3.4	11,029	9.7
35 to 44 years	194,998	177,867	91.2	1,573	0.8	18,704	9.6
45 to 54 years	279,442	267,483	95.7	4,786	1.7	16,745	6.0
55 to 64 years	234,312	226,104	96.5	7,214	3.1	15,422	6.6
65 years and over	129,118	112,264	86.9	2,335	1.8	19,189	14.9
Not reported	69,001	17,597	25.5	351	0.5	51,755	75.0
Farms by residence of operator:							
Lives on place	850,315	792,040	93.1	16,591	1.9	74,866	8.8
Lives off place	58,185	53,472	91.9	2,321	4.0	7,034	12.1
Not reported	125,490	74,047	59.0	1,291	1.0	52,734	42.0

Note: Includes an estimated 1,261 abnormal farms. Figures are estimates based on a sample and are subject to sampling errors. See tables 10 and 11. Data is also subject to nonsampling errors which result in differences in census farm counts and coverage check estimated farm counts. See text, Accuracy of the Estimates.

Table 3. Number of Farms by Components of Coverage by Tenure and Size; Age and Residence of Operator—Continued

(Excludes adjustments for nonrespondents)

	Estimated total farms	Included in census		Overcounted in census		Missed in census	
		Number of farms	Percent of estimated total	Number of farms	Percent of estimated total	Number of farms	Percent of estimated total
The South							
All farms	1,041,377	813,142	78.1	24,516	2.4	252,751	24.3
Farms by tenure:							
Full owner	701,030	532,092	75.9	18,083	2.6	187,021	26.7
Part owner	222,524	193,119	86.8	3,740	1.7	33,145	14.9
Tenant	117,823	87,931	74.6	2,693	2.3	32,585	27.7
Farms by size:							
Under 10 acres	68,344	37,314	54.6	720	1.1	31,750	46.5
10 to 49 acres	281,385	181,683	64.6	6,202	2.2	105,904	37.6
50 to 99 acres	228,180	171,640	75.2	4,144	1.8	60,684	26.6
100 to 219 acres	232,274	203,701	87.7	5,925	2.6	34,498	14.9
220 to 499 acres	143,473	135,636	94.5	4,986	3.4	12,823	8.9
500 acres and over	87,721	83,168	94.8	2,539	2.9	7,092	8.1
Farms by age of operator:							
Under 25 years	9,397	7,438	79.2	165	1.8	2,124	22.6
25 to 34 years	73,448	62,625	85.3	2,316	3.2	13,139	17.9
35 to 44 years	159,223	136,494	85.7	4,117	2.6	26,846	16.9
45 to 54 years	239,650	215,565	89.9	7,228	3.0	31,313	13.1
55 to 64 years	244,661	224,708	91.8	6,320	2.5	26,273	10.7
65 years and over	187,080	141,926	84.9	4,126	2.4	29,280	17.5
Not reported	147,918	24,386	16.5	244	0.2	123,776	83.7
Farms by residence of operator:							
Lives on place	723,083	627,907	86.8	16,647	2.3	111,823	15.5
Lives off place	96,702	83,232	86.1	3,824	4.0	17,294	17.9
Not reported	221,592	102,003	46.0	4,045	1.8	123,634	55.8
The West¹							
All farms	232,055	186,656	80.4	4,743	2.0	50,142	21.6
Farms by tenure:							
Full owner	141,590	104,415	73.7	2,108	1.5	39,283	27.8
Part owner	64,688	60,722	93.9	1,629	2.5	5,595	8.6
Tenant	25,777	21,519	83.5	1,006	3.9	5,264	20.4
Farms by size:							
Under 10 acres	21,625	11,387	52.6	288	1.3	10,526	48.7
10 to 49 acres	68,324	45,558	66.7	529	0.8	23,295	34.1
50 to 99 acres	23,529	20,202	85.9	448	1.9	3,775	16.0
100 to 219 acres	35,529	30,310	85.3	726	2.0	5,945	16.7
220 to 499 acres	25,550	23,369	91.4	750	2.9	2,931	11.5
500 acres and over	57,498	55,830	97.1	2,002	3.5	3,670	6.4
Farms by age of operator:							
Under 25 years	2,413	2,219	92.0	-	-	194	8.0
25 to 34 years	18,683	17,551	93.9	543	2.9	1,675	9.0
35 to 44 years	41,623	34,969	84.0	960	2.3	7,614	18.3
45 to 54 years	65,476	56,910	86.9	1,382	2.1	9,948	15.2
55 to 64 years	56,046	48,584	86.7	1,063	1.9	8,525	15.2
65 years and over	29,369	24,174	82.3	769	2.6	5,964	20.3
Not reported	18,445	2,249	12.2	26	0.1	16,222	87.9
Farms by residence of operator:							
Lives on place	179,486	155,749	86.8	3,767	2.1	27,504	15.3
Lives off place	19,775	15,790	79.8	470	2.3	4,455	22.5
Not reported	32,794	15,117	46.1	506	1.5	18,183	55.4

Note: Includes an estimated 1,261 abnormal farms. Figures are estimates based on a sample and are subject to sampling errors. See tables 10 and 11. Data is also subject to nonsampling errors which result in differences in census farm counts and coverage check estimated farm counts. See text, Accuracy of the Estimates

¹Does not include data for Alaska and Hawaii.

Table 4. Number of Acres for Estimated Total and Included in Census With Sampling Error

(Excludes adjustments for nonrespondents)

	Estimated total acres	Included in census		Sampling error of included estimate	
		Number of acres	Percent of estimated total	Number of acres	Percent of acres included in census
United States	863,374,256	784,980,030	90.9	29,985,959	3.8
The Northeast	25,206,807	22,048,527	87.5	1,133,840	5.1
The North Central	331,351,202	313,811,480	94.7	9,729,534	3.1
The South	252,855,291	215,627,552	85.3	9,844,972	4.6
The West ¹	253,960,956	233,492,471	91.9	26,576,022	11.4
Geographic Divisions:					
New England	6,080,971	5,379,632	88.5	595,542	11.1
Middle Atlantic	19,125,856	16,668,895	87.2	964,843	5.8
East North Central	89,559,943	83,334,711	93.0	3,344,825	4.0
West North Central	241,791,259	230,476,769	95.3	9,136,519	4.0
South Atlantic	63,672,619	52,438,314	82.4	3,526,898	6.7
East South Central	52,147,762	44,730,042	85.8	2,768,448	6.2
West South Central	137,034,910	118,459,196	86.4	8,764,711	7.4
Mountain	207,911,445	194,346,689	93.5	26,288,906	13.5
Pacific ¹	46,049,511	39,145,782	85.0	3,895,968	10.0

Note: Figures are estimates based on a sample and are subject to sampling errors. Data is also subject to nonsampling errors which result in differences in census counts and coverage check estimated counts. See text, Accuracy of the Estimates.

¹Does not include data for Alaska and Hawaii.

Evaluation of Coverage

United States and Regions
1969 Census of Agriculture

Table 5. Characteristics of Farms Missed in the Census by Class

	All farms	Class 1-5— Farms with sales of \$2,500 and over	Class 1— Farms with sales of \$40,000 and over	Class 2— Farms with sales of \$20,000 to \$39,999	Class 3— Farms with sales of \$10,000 to \$19,999	Class 4— Farms with sales of \$5,000 to \$9,999	Class 5— Farms with sales of \$2,500 to \$4,999	Class 6-8— Farms with sales of under \$2,500	Class 6	Class 7— Part-time farms	Class 8— Part- retirement farms
United States											
Number of missed farms.....	476,670	102,695	6,315	10,270	15,950	27,972	42,188	373,975	73,175	198,216	102,584
Land in farms.....	56,360,304	33,334,295	5,223,353	6,119,252	7,173,778	6,189,832	8,628,080	23,028,009	5,858,007	9,776,619	7,391,383
Average size of farm.....	118	324	827	595	449	221	204	61	80	49	72
Corn for grain.....farms..	96,140	34,862	2,238	5,019	7,554	10,441	9,610	61,278	15,655	32,392	13,231
acres..	2,349,694	1,930,695	531,123	431,527	345,888	384,988	237,169	418,999	146,410	186,421	86,168
Sorghums for grain.....farms..	7,142	4,552	24	531	620	1,537	1,840	2,590	1,152	513	925
acres..	370,895	348,406	2,760	62,886	62,940	115,251	104,569	22,489	6,793	12,360	3,336
Wheat.....farms..	20,642	12,337	130	1,958	2,712	3,941	3,596	8,305	1,145	4,622	2,538
acres..	879,981	794,829	16,628	223,371	260,422	178,749	115,659	85,152	9,282	55,155	20,715
Soybeans.....farms..	33,412	17,500	1,582	3,868	2,832	6,178	3,040	15,912	2,873	8,634	4,405
acres..	1,486,212	1,324,192	538,916	304,662	124,010	286,375	70,229	172,020	33,931	96,914	41,175
Hay.....farms..	147,107	39,652	1,523	6,409	9,182	10,009	12,529	107,455	17,698	60,601	29,156
acres..	2,795,235	1,467,901	109,893	356,334	378,950	295,577	327,147	1,327,334	263,160	732,011	332,163
Cotton.....farms..	11,929	3,996	208	271	498	1,983	1,036	7,933	3,401	2,362	2,170
acres..	308,240	255,227	116,460	35,380	26,017	61,473	15,897	53,013	26,725	16,558	9,790
Tobacco.....farms..	34,734	12,556	18	707	1,461	4,859	5,511	22,178	6,434	9,760	5,984
acres..	71,456	55,395	684	6,240	11,515	22,244	14,710	16,057	4,215	7,942	3,898
Cattle and calves.....farms..	297,753	65,426	2,676	8,095	11,717	16,108	26,830	232,327	48,417	123,853	60,057
number..	5,819,584	3,588,947	531,645	663,238	820,818	657,845	915,401	2,230,637	570,273	1,067,144	593,220
Hogs and pigs.....farms..	123,416	29,189	834	3,242	4,829	9,004	11,280	94,227	25,520	47,828	20,879
number..	2,818,818	1,839,147	97,082	582,060	344,359	442,130	373,516	979,671	248,279	565,780	165,612
Hens and pullets.....farms..	137,851	25,576	990	2,295	3,891	6,832	11,568	112,275	25,983	51,365	34,927
number..	14,198,839	10,519,886	682,670	6,159,723	863,693	842,227	1,971,573	3,678,953	637,619	1,487,840	1,553,494
Total value of products sold....farms..	453,419	102,695	6,315	10,270	15,950	27,972	42,188	350,724	69,939	183,041	97,744
dollars (1,000) ¹ .	1,501,766	1,242,186	413,138	275,481	216,208	191,715	145,596	259,557	69,433	122,352	67,732
The Northeast											
Number of missed farms.....	39,143	7,198	1,847	901	2,031	981	1,438	31,945	3,333	21,232	7,380
Land in farms.....	3,012,141	1,126,996	146,865	263,182	398,572	186,316	132,061	1,985,145	237,520	1,293,023	354,602
Average size of farm.....	76	156	79	292	196	189	91	59	71	60	48
Corn for grain.....farms..	8,051	1,565	18	124	701	188	534	6,486	936	4,496	1,054
acres..	69,921	40,965	180	16,843	14,569	2,007	7,366	28,956	4,129	19,701	5,126
Sorghums for grain.....farms..	36	-	-	-	-	-	-	36	-	18	18
acres..	234	-	-	-	-	-	-	234	-	90	144
Wheat.....farms..	2,516	1,039	-	106	512	105	316	1,477	264	1,090	123
acres..	18,831	12,467	-	4,293	5,860	420	1,894	6,364	264	5,746	354
Soybeans.....farms..	48	-	-	-	-	-	-	48	-	48	-
acres..	1,338	-	-	-	-	-	-	1,338	-	1,338	-
Hay.....farms..	21,309	3,623	71	827	1,446	717	582	17,686	1,950	11,263	4,473
acres..	391,435	165,839	7,100	59,745	67,260	21,615	10,119	225,596	17,798	145,042	62,756
Cotton.....farms..	-	-	-	-	-	-	-	-	-	-	-
acres..	-	-	-	-	-	-	-	-	-	-	-
Tobacco.....farms..	159	159	-	-	-	-	-	159	-	-	-
acres..	344	344	-	-	-	-	-	344	-	-	-
Cattle and calves.....farms..	23,637	4,250	314	827	1,549	603	957	19,387	1,865	13,613	3,909
number..	319,481	201,195	39,213	52,197	65,003	24,263	20,519	118,286	12,166	85,678	20,442
Hogs and pigs.....farms..	6,078	740	18	-	502	202	18	5,338	336	3,890	1,112
number..	50,097	6,777	450	-	1,183	3,344	1,800	43,320	1,104	36,216	6,000
Hens and pullets.....farms..	8,515	1,371	48	59	843	391	30	7,144	656	4,321	2,187
number..	1,432,375	1,115,804	495,930	5,900	580,014	33,270	690	318,571	23,670	149,652	143,249
Total value of products sold....farms..	37,384	7,198	1,847	901	2,031	981	1,438	30,186	2,860	20,235	7,091
dollars (1,000) ¹ .	185,297	166,229	104,229	22,585	28,154	6,620	4,635	19,066	2,119	12,222	4,719
The North Central											
Number of missed farms.....	134,634	44,064	1,850	5,843	7,359	13,603	15,409	90,570	10,748	51,843	27,979
Land in farms.....	17,875,095	12,636,088	1,842,890	2,507,736	2,521,544	3,334,825	2,429,093	5,239,007	1,093,028	2,593,822	1,552,157
Average size of farm.....	132	286	996	429	342	245	157	57	101	50	55
Corn for grain.....farms..	35,700	21,376	1,573	3,731	5,133	6,162	4,777	14,324	3,120	9,510	1,694
acres..	1,728,313	1,582,085	503,444	347,347	257,805	292,830	180,659	146,228	58,066	77,802	10,360
Sorghums for grain.....farms..	4,288	3,296	-	502	315	809	1,670	992	542	450	-
acres..	228,393	213,921	-	59,268	25,786	29,172	98,695	14,472	2,622	11,850	-
Wheat.....farms..	11,556	7,196	64	1,473	1,183	2,439	2,037	4,360	573	2,069	1,718
acres..	545,628	487,959	9,088	160,827	159,739	90,047	68,258	57,669	5,486	36,611	15,572
Soybeans.....farms..	20,869	12,446	1,427	3,347	2,345	3,757	1,570	8,223	724	5,061	2,438
acres..	1,056,469	956,892	401,376	227,800	82,087	218,076	27,553	99,577	6,902	66,509	26,168
Hay.....farms..	55,669	21,577	574	4,285	4,638	5,786	6,304	34,092	3,918	20,534	9,640
acres..	1,212,179	746,852	48,880	214,420	147,522	147,696	188,334	465,327	73,901	273,489	117,937
Cotton.....farms..	364	182	-	-	-	-	-	182	-	-	182
acres..	3,458	2,184	-	-	-	-	2,184	1,274	-	1,274	
Tobacco.....farms..	1,040	-	-	-	-	-	-	1,040	520	268	262
acres..	907	-	-	-	-	-	-	907	260	516	131
Cattle and calves.....farms..	78,913	29,059	574	5,386	5,430	6,824	8,845	47,854	7,029	27,852	12,973
number..	1,936,134	1,432,765	89,724	390,083	328,119	391,891	232,948	503,369	118,972	266,663	124,834
Hogs and pigs.....farms..	32,345	14,905	510	2,428	2,719	3,738	5,512	17,440	3,461	12,046	1,933
number..	1,586,471	1,281,375	88,460	476,140	263,208	226,800	226,767	305,098	47,721	228,984	28,391
Hens and pullets.....farms..	37,788	10,743	625	1,245	1,884	3,095	3,894	27,035	4,614	12,620	9,601
number..	2,973,656	1,476,917	178,000	408,673	219,714	380,751	289,779	1,486,739	114,738	686,325	785,678
Total value of products sold....farms..	129,250	44,064	1,850	5,843	7,359	13,603	15,409	85,186	10,748	47,879	26,759
dollars (1,000) ¹ .	620,545	548,813	142,232	157,266	100,840	95,843	52,721	71,925	10,914	39,724	21,276

Note: Includes an estimated 314 abnormal farms. Figures are estimates based on a sample and are subject to sampling errors. See tables 10 and 11.
¹Data does not add due to rounding.

Table 5. Characteristics of Farms Missed in the Census by Class—Continued

	All farms	Class 1-5— Farms with sales of \$2,500 and over	Class 1— Farms with sales of \$40,000 and over	Class 2— Farms with sales of \$20,000 to \$39,999	Class 3— Farms with sales of \$10,000 to \$19,999	Class 4— Farms with sales of \$5,000 to \$9,999	Class 5— Farms with sales of \$2,500 to \$4,999	Class 6-8— Farms with sales of under \$2,500	Class 6	Class 7— Part-time farms	Class 8— Part- retirement farms
The South											
Number of missed farms.....	252,751	37,973	1,607	2,496	4,350	9,837	19,683	214,778	53,548	99,948	61,282
Land in farms.....	24,928,805	12,078,990	1,595,745	1,188,573	2,621,058	1,402,050	5,271,564	12,849,815	4,038,305	4,817,732	3,993,778
Average size of farm.....	98	318	992	476	602	142	267	59	75	48	65
Corn for grain.....farms..	50,903	10,880	485	1,133	1,478	3,791	3,993	40,023	11,534	18,006	10,483
acres..	507,437	288,705	6,439	66,996	66,480	83,638	45,152	238,732	84,150	83,900	70,682
Sorghums for grain.....farms..	2,219	1,014	-	-	277	624	113	1,205	347	-	858
acres..	121,845	118,670	-	-	33,794	81,712	3,164	3,175	601	-	2,574
Wheat.....farms..	3,584	1,977	-	82	574	869	452	1,607	112	1,089	406
acres..	142,645	135,915	-	2,544	73,831	45,458	14,082	6,730	224	5,142	1,364
Soybeans.....farms..	12,895	5,054	155	521	487	2,421	1,470	7,641	2,149	3,525	1,967
acres..	438,405	387,300	137,540	76,862	41,923	68,299	42,876	71,105	27,029	29,067	15,009
Hay.....farms..	53,463	9,074	377	783	1,740	2,182	2,894	44,389	10,591	20,782	13,016
acres..	673,845	205,152	7,560	25,210	59,911	36,232	76,239	468,693	147,408	194,131	127,154
Cotton.....farms..	11,028	3,496	137	202	390	1,925	842	7,532	3,401	2,173	1,958
acres..	285,847	235,431	109,800	30,829	21,751	59,742	13,509	50,416	26,725	15,415	8,276
Tobacco.....farms..	33,535	12,397	12	707	1,461	4,859	5,352	21,138	5,914	9,502	5,722
acres..	70,205	55,049	684	6,240	11,515	22,244	14,366	15,148	3,955	7,426	3,767
Cattle and calves.....farms..	163,800	23,465	1,167	1,304	3,236	4,422	13,336	140,335	36,398	64,447	39,490
number..	2,631,685	1,230,559	230,162	94,633	251,862	124,829	529,073	1,401,126	407,844	588,805	404,477
Hogs and pigs.....farms..	79,016	11,785	306	770	1,386	4,082	5,221	67,251	20,506	29,307	17,438
number..	1,068,399	470,481	8,172	98,560	59,222	176,512	128,015	597,918	194,304	274,769	128,845
Hens and pullets.....farms..	83,027	11,347	179	868	940	2,460	6,900	71,680	19,683	30,256	21,741
number..	9,260,796	7,534,054	6,802	5,743,305	16,659	104,350	1,662,944	1,726,742	481,797	660,469	584,476
Total value of products sold....farms..	238,890	37,973	1,607	2,496	4,350	9,837	19,683	200,917	50,954	91,896	58,067
dollars (1,000) ¹ ..	480,424	335,573	80,680	65,475	56,541	64,984	67,882	144,842	51,212	55,956	37,660
The West²											
Number of missed farms.....	50,142	13,460	1,011	1,030	2,210	3,551	5,658	36,682	5,546	25,193	5,943
Land in farms.....	10,544,263	7,492,221	1,637,853	2,159,761	1,632,604	1,266,641	795,362	3,052,042	489,154	1,072,042	1,490,846
Average size of farm.....	210	556	1,620	2,096	738	356	140	83	88	42	250
Corn for grain.....farms..	1,486	1,041	162	31	242	300	306	445	65	380	-
acres..	44,023	38,940	21,060	341	7,034	6,513	3,992	5,083	65	5,018	-
Sorghums for grain.....farms..	599	242	24	29	28	104	57	357	263	45	49
acres..	20,423	15,815	2,760	3,618	3,360	4,367	1,710	4,608	3,570	420	618
Wheat.....farms..	2,986	2,125	66	297	443	528	791	861	196	374	291
acres..	172,877	158,488	7,540	55,707	20,992	42,824	31,425	14,389	3,308	7,656	3,425
Soybeans.....farms..	-	-	-	-	-	-	-	-	-	-	-
acres..	-	-	-	-	-	-	-	-	-	-	-
Hay.....farms..	16,666	5,378	501	522	1,358	1,344	1,653	11,288	1,239	8,022	2,057
acres..	517,776	350,058	46,353	56,959	104,257	90,034	52,455	167,718	24,053	119,349	24,346
Cotton.....farms..	537	318	71	69	108	58	12	219	-	189	30
acres..	18,935	17,612	6,860	4,551	4,266	1,731	204	1,323	-	1,143	180
Tobacco.....farms..	-	-	-	-	-	-	-	-	-	-	-
acres..	-	-	-	-	-	-	-	-	-	-	-
Cattle and calves.....farms..	33,403	8,626	621	578	1,502	2,259	3,692	24,751	3,125	17,941	3,685
number..	932,284	724,168	172,546	126,325	175,834	116,862	132,861	207,856	34,291	130,098	43,467
Hogs and pigs.....farms..	5,977	1,779	-	46	222	982	529	4,198	7,217	2,585	396
number..	113,851	80,514	-	7,360	20,746	35,474	16,934	33,337	5,150	25,811	2,376
Hens and pullets.....farms..	2,541	2,115	138	123	224	886	744	6,426	1,040	4,168	1,218
number..	532,012	393,111	1,938	1,845	47,306	323,856	18,166	138,901	17,416	91,394	30,091
Total value of products sold....farms..	47,895	13,460	1,011	1,030	2,210	3,551	5,658	34,435	5,377	23,231	5,827
dollars (1,000) ¹ ..	215,500	191,771	85,997	30,155	30,673	24,568	20,358	23,715	5,188	14,450	4,077

Note: Includes an estimated 314 abnormal farms. Figures are estimates based on a sample and are subject to sampling errors. See tables 10 and 11.
¹Data does not add due to rounding.
²Does not include data for Alaska and Hawaii.

Evaluation of Coverage

1969 Census of Agriculture
United States and Regions

Table 6. Characteristics of Farms Missed in the Census by Type of Farm

	Total	Cash-grain farms	Tobacco farms	Cotton farms	Other field crop farms	Vegetable farms	Fruit and nut farms	Poultry farms	Dairy farms	Livestock farms and ranches other than poultry and dairy	General farms	Miscellaneous farms
United States												
Number of missed farms.....	476,670	42,305	24,565	5,069	3,396	10,092	12,322	11,147	22,712	270,218	50,833	24,011
Land in farms.....	56,360,304	7,362,825	1,278,031	857,563	368,889	400,903	487,720	499,616	4,291,148	34,207,622	5,191,274	1,414,713
Average size of farm.....	118	174	52	169	108	39	39	44	188	126	102	58
Corn for grain.....farms..	96,140	21,261	7,131	1,379	608	1,578	356	1,133	8,451	42,976	8,867	2,400
acres..	2,349,694	994,792	91,254	8,496	20,474	7,913	712	18,849	244,141	788,490	165,471	9,102
Sorghums for grain.....farms..	7,142	2,849	-	60	-	18	858	-	220	2,689	448	-
acres..	370,895	241,510	-	3,363	-	90	2,574	-	220	110,408	12,730	-
Wheat.....farms..	20,642	7,533	393	-	184	82	-	547	1,355	7,659	2,030	859
acres..	879,981	576,500	1,560	-	1,728	1,334	-	2,964	28,792	190,085	75,946	1,612
Soybeans.....farms..	33,412	17,052	2,779	1,185	344	249	-	-	1,731	7,574	2,166	332
acres..	1,496,212	872,043	18,139	214,346	11,032	2,737	-	-	85,938	218,411	67,922	5,644
Hay.....farms..	147,107	9,059	4,462	635	635	814	341	926	13,221	65,535	42,796	8,683
acres..	2,795,235	159,959	54,866	5,799	7,079	12,644	10,499	10,113	560,570	1,158,979	744,016	70,711
Cotton.....farms..	11,929	1,799	303	5,069	147	-	160	126	47	1,952	2,241	85
acres..	308,240	38,470	1,724	207,368	5,196	-	1,280	1,176	1,880	19,315	31,491	340
Tobacco.....farms..	34,734	329	24,565	-	-	108	214	425	728	4,158	4,207	-
acres ¹ ..	71,456	518	61,581	-	-	165	107	1,000	1,594	2,975	3,514	-
Cattle and calves.....farms..	297,753	7,159	7,537	1,484	950	3,426	1,512	2,803	22,379	214,265	23,266	12,972
number..	5,819,584	146,048	41,599	12,899	16,316	39,182	13,187	28,433	881,406	4,377,477	210,945	52,092
Hogs and pigs.....farms..	123,416	5,793	7,861	984	711	3,054	680	1,778	6,100	82,741	10,931	2,783
number..	2,818,818	105,085	103,348	4,306	19,610	29,862	4,293	14,175	273,920	2,089,020	157,159	18,040
Hens and pullets.....farms..	137,851	7,454	4,408	1,957	941	1,434	1,522	9,821	5,897	84,013	15,560	4,844
number..	14,198,839	178,222	125,710	24,372	26,768	12,856	36,017	9,567,412	713,765	2,820,212	613,268	80,237
Total value of products sold....farms..	453,419	41,443	24,565	5,069	3,396	10,092	11,766	11,048	22,672	263,561	49,858	9,949
dollars (1,000) ¹ ..	1,501,766	224,545	78,942	33,981	26,089	16,123	50,405	62,798	258,707	567,206	65,049	117,801
The Northeast												
Number of missed farms.....	39,143	2,333	159	-	508	845	848	1,512	4,850	16,736	6,429	4,923
Land in farms.....	3,012,141	117,034	1,378	-	51,595	16,362	60,345	62,223	946,535	1,084,886	497,008	174,775
Average size of farm.....	76	50	8	-	101	19	71	41	195	64	77	35
Corn for grain.....farms..	8,051	1,408	53	-	-	-	-	126	961	3,792	1,210	501
acres..	69,921	27,598	159	-	-	-	-	9,540	7,260	18,391	5,540	1,433
Sorghums for grain.....farms..	36	18	-	-	-	18	-	-	-	-	-	-
acres..	234	144	-	-	-	90	-	-	-	-	-	-
Wheat.....farms..	2,516	642	-	-	-	-	-	90	694	742	242	106
acres..	18,831	7,653	-	-	-	-	-	1,800	4,180	4,366	726	106
Soybeans.....farms..	48	48	-	-	-	-	-	-	-	-	-	-
acres..	1,338	1,338	-	-	-	-	-	-	-	-	-	-
Hay.....farms..	21,309	797	-	-	134	15	137	530	3,325	7,903	6,195	2,273
acres..	391,435	14,366	-	-	641	30	6,850	9,557	148,047	100,437	93,092	18,415
Cotton.....farms..	-	-	-	-	-	-	-	-	-	-	-	-
acres..	-	-	-	-	-	-	-	-	-	-	-	-
Tobacco.....farms..	159	-	159	-	-	-	-	-	-	-	-	-
acres..	344	-	344	-	-	-	-	-	-	-	-	-
Cattle and calves.....farms..	23,637	288	-	-	29	-	-	400	4,850	13,272	2,632	2,166
number..	319,481	1,757	-	-	116	-	-	677	182,507	112,978	12,852	8,584
Hogs and pigs.....farms..	6,078	160	-	-	29	-	53	123	1,275	2,905	1,025	508
number..	50,097	250	-	-	58	-	212	555	3,671	39,258	5,099	994
Hens and pullets.....farms..	8,515	223	-	-	208	-	234	1,323	1,222	3,362	1,446	497
number..	1,432,375	4,518	-	-	5,805	-	11,700	1,217,155	30,115	101,235	58,318	5,529
Total value of products sold....farms..	37,384	2,333	159	-	508	845	848	1,512	4,850	16,736	6,429	3,164
dollars (1,000) ¹ ..	185,297	3,810	477	-	3,586	1,037	2,754	9,418	64,062	15,151	3,403	81,582
The North Central												
Number of missed farms.....	134,634	22,339	782	182	271	2,125	1,000	5,326	9,757	68,393	16,413	8,046
Land in farms.....	17,875,095	4,677,658	58,254	3,640	1,897	72,597	9,964	142,823	2,609,061	8,287,312	1,549,096	462,793
Average size of farm.....	132	209	74	20	7	34	9	26	267	121	94	57
Corn for grain.....farms..	35,700	10,129	258	-	-	-	-	682	4,459	16,546	3,626	-
acres..	1,728,313	816,203	4,644	-	-	-	-	3,694	208,488	603,167	92,117	-
Sorghums for grain.....farms..	4,288	1,899	-	-	-	-	-	-	-	2,389	-	-
acres..	228,393	123,556	-	-	-	-	-	-	-	104,837	-	-
Wheat.....farms..	11,556	4,597	-	-	-	-	-	457	559	5,313	630	-
acres..	545,628	355,138	-	-	-	-	-	1,164	22,350	132,732	34,244	-
Soybeans.....farms..	20,669	11,583	258	182	-	-	-	-	1,731	5,620	963	332
acres..	1,056,469	742,193	774	1,274	-	-	-	-	85,938	204,501	16,145	5,644
Hay.....farms..	55,669	5,353	258	-	-	605	-	356	6,883	24,199	14,927	3,088
acres..	1,212,179	79,355	2,580	-	-	7,840	-	356	337,239	494,540	266,564	23,705
Cotton.....farms..	364	182	-	182	-	-	-	-	-	-	-	-
acres..	3,458	2,184	-	1,274	-	-	-	-	-	-	-	-
Tobacco.....farms..	1,040	-	782	-	-	-	-	-	-	258	-	-
acres..	907	-	778	-	-	-	-	-	-	129	-	-
Cattle and calves.....farms..	78,913	3,940	258	-	-	296	251	841	9,757	49,629	7,966	3,975
number..	1,936,134	91,963	2,322	-	-	296	1,506	3,139	508,336	1,231,384	81,047	16,141
Hogs and pigs.....farms..	32,345	1,765	-	-	-	546	-	293	3,124	23,167	3,450	-
number..	1,586,471	50,036	-	-	-	1,934	-	293	254,758	1,195,125	84,325	-
Hens and pullets.....farms..	37,768	3,007	-	-	-	-	-	4,644	2,267	21,382	4,750	1,718
number..	2,973,656	44,816	-	-	-	-	-	788,555	328,310	1,475,189	298,393	38,393
Total value of products sold....farms..	129,250	22,339	782	182	271	2,125	1,000	5,326	9,757	68,142	16,413	2,913
dollars (1,000) ¹ ..	620,545	175,598	955	163	121	3,903	816	19,690	142,466	244,462	19,445	12,901

Note: Includes an estimated 314 abnormal farms. Figures are estimates based on a sample and are subject to sampling errors. See tables 10 and 11.

¹Data does not add due to rounding.

Table 6. Characteristics of Farms Missed in the Census by Type of Farm—Continued

	Total	Cash-grain farms	Tobacco farms	Cotton farms	Other field crop farms	Vegetable farms	Fruit and nut farms	Poultry farms	Dairy farms	Livestock farms and ranches other than poultry and dairy	General farms	Miscellaneous farms
The South												
Number of missed farms.....	252,751	15,480	23,624	4,750	2,122	6,803	5,905	4,191	6,750	154,787	20,614	7,725
Land in farms.....	24,928,805	1,900,298	1,218,399	819,623	210,123	260,309	254,839	287,474	653,035	17,426,712	1,640,149	257,844
Average size of farm.....	98	122	51	172	99	38	43	68	96	112	79	33
Corn for grain.....farms..	50,903	9,501	6,820	1,379	451	1,578	356	325	2,941	21,809	3,844	1,899
acres..	507,437	145,588	86,451	8,496	16,076	7,913	712	5,615	27,643	137,927	63,347	7,669
Sorghums for grain.....farms..	2,219	785	-	-	-	-	-	-	220	243	113	-
acres..	121,845	112,026	-	-	-	-	2,574	-	220	3,861	3,164	-
Wheat.....farms..	3,584	1,133	393	-	-	36	-	-	72	664	533	753
acres..	142,645	99,431	1,560	-	-	828	-	-	2,052	9,550	27,718	1,506
Soybeans.....farms..	12,695	5,421	2,521	1,003	344	249	-	-	-	1,954	1,203	-
acres..	438,405	128,512	17,365	213,072	11,032	2,737	-	-	-	13,910	51,777	-
Hay.....farms..	53,463	2,183	4,204	626	388	148	81	9	2,511	25,343	15,544	2,426
acres..	673,845	34,755	52,286	5,529	1,509	1,876	471	45	59,022	312,394	193,831	12,127
Cotton.....farms..	11,028	1,576	303	4,750	135	-	160	105	-	1,844	2,070	85
acres..	285,847	36,204	1,724	197,261	4,860	-	1,280	1,050	-	16,811	26,317	340
Tobacco.....farms..	33,535	329	23,624	-	-	108	214	425	728	3,900	4,207	-
acres..	70,205	518	60,459	-	-	165	107	1,000	1,594	2,846	3,514	-
Cattle and calves.....farms..	163,800	2,208	7,279	1,455	697	2,992	829	1,531	6,750	125,132	10,028	4,899
number..	2,631,685	42,411	39,277	10,083	6,063	20,302	6,900	23,067	126,354	2,246,126	90,430	20,672
Hogs and pigs.....farms..	79,016	3,462	7,861	963	619	2,462	627	1,362	1,661	52,049	5,733	2,217
number..	1,068,399	49,290	103,348	4,243	18,796	20,568	4,081	13,327	15,451	760,559	61,748	16,988
Hens and pullets.....farms..	83,027	3,706	4,408	1,924	553	1,388	977	3,788	2,139	54,157	7,935	2,052
number..	9,260,796	120,556	125,710	23,997	11,671	11,936	20,025	7,515,502	50,377	1,126,823	226,975	27,224
Total value of products sold....farms..	238,890	14,578	23,624	4,750	2,122	6,803	5,442	4,092	6,750	148,670	19,869	2,190
dollars (1,000) ¹ .	480,424	29,186	77,510	32,257	9,049	7,526	14,888	29,682	27,477	210,290	27,704	14,805
The West ²												
Number of missed farms.....	50,142	2,153	-	137	495	319	4,569	118	1,355	30,302	7,377	3,317
Land in farms.....	10,544,263	667,835	-	34,300	105,274	51,635	162,572	7,096	82,517	7,408,712	1,505,021	519,301
Average size of farm.....	210	310	-	250	212	161	35	60	80	244	204	156
Corn for grain.....farms..	1,486	223	-	-	157	-	-	-	90	829	187	-
acres..	44,023	5,403	-	-	4,398	-	-	-	750	29,005	4,467	-
Sorghums for grain.....farms..	599	147	-	60	-	-	-	-	-	57	335	-
acres..	20,423	5,784	-	3,363	-	-	-	-	-	1,710	9,566	-
Wheat.....farms..	2,986	1,161	-	-	184	46	-	-	30	940	625	-
acres..	172,877	114,278	-	-	1,728	506	-	-	210	43,437	12,718	-
Soybeans.....farms..	-	-	-	-	-	-	-	-	-	-	-	-
acres..	-	-	-	-	-	-	-	-	-	-	-	-
Hay.....farms..	16,666	726	-	9	113	46	123	31	502	8,090	6,130	896
acres..	517,776	31,483	-	270	4,929	2,898	3,178	155	16,262	251,608	190,529	16,464
Cotton.....farms..	537	41	-	137	12	-	-	21	47	108	171	-
acres..	18,935	82	-	8,833	336	-	-	126	1,880	2,504	5,174	-
Tobacco.....farms..	-	-	-	-	-	-	-	-	-	-	-	-
acres..	-	-	-	-	-	-	-	-	-	-	-	-
Cattle and calves.....farms..	33,403	723	-	29	224	138	432	31	1,022	26,232	2,640	1,932
number..	932,284	9,917	-	2,816	10,137	18,584	4,781	1,550	64,209	786,989	26,616	6,685
Hogs and pigs.....farms..	5,977	406	-	21	63	46	-	-	40	786,989	723	58
number..	113,851	5,509	-	63	756	7,360	-	-	40	94,078	5,987	58
Hens and pullets.....farms..	8,541	518	-	33	180	46	311	66	269	5,112	1,429	577
number..	532,012	8,332	-	375	9,292	920	4,292	46,200	304,963	116,965	31,582	9,091
Total value of products sold....farms..	47,855	2,153	-	137	495	319	4,476	118	1,315	30,013	7,147	1,682
dollars (1,000) ¹ .	215,500	15,951	-	1,561	13,333	3,657	31,947	4,008	24,702	97,303	14,497	8,513

Note: Includes an estimated 314 abnormal farms. Figures are estimates based on a sample and are subject to sampling errors. See tables 10 and 11.
¹Data does not add due to rounding.
²Does not include data for Alaska and Hawaii.

Evaluation of Coverage

1969 Census of Agriculture
Regions and Selected StatesTable 7. Number of Farms by Components of Coverage by Value of Products Sold Including
Adjustments for Nonrespondents

	Estimated total farms	Included in census		Overcounted in census		Missed in census	
		Number of farms	Percent of estimated total	Number of farms	Percent of estimated total	Number of farms	Percent of estimated total
United States, all farms.....	2,707,905	2,301,428	85.0	70,193	2.6	476,670	17.6
Farms with sales of \$2,500 and over.....	1,585,713	1,533,743	96.7	50,725	3.2	102,695	6.5
Farms with sales under \$2,500.....	1,122,192	767,685	68.4	19,468	1.7	373,975	33.3
The Northeast, all farms.....	177,765	145,368	81.8	6,746	3.8	39,143	22.0
Farms with sales of \$2,500 and over.....	94,223	90,222	95.8	3,197	3.4	7,198	7.6
Farms with sales under \$2,500.....	83,542	55,146	66.0	3,549	4.2	31,945	38.2
The North Central, all farms.....	1,143,192	1,034,984	90.5	26,426	2.3	134,634	11.8
Farms with sales of \$2,500 and over.....	826,715	804,704	97.3	22,053	2.6	44,064	5.3
Farms with sales under \$2,500.....	316,477	230,280	72.8	4,373	1.4	90,570	28.6
The South, all farms.....	1,131,662	909,396	80.4	30,485	2.7	252,751	22.3
Farms with sales of \$2,500 and over.....	493,649	475,085	96.2	19,409	3.9	37,973	7.7
Farms with sales under \$2,500.....	638,013	434,311	68.1	11,076	1.7	214,778	33.6
The West, all farms.....	255,286	211,680	82.8	6,536	2.3	50,142	19.5
Farms with sales of \$2,500 and over.....	171,126	163,732	95.7	6,066	3.5	13,460	7.8
Farms with sales under \$2,500.....	84,160	47,948	57.0	470	0.6	36,682	43.6
New England, all farms ¹	33,034	26,649	81.0	1,320	0.4	7,705	23.0
Farms with sales of \$2,500 and over.....	20,073	19,549	97.0	701	3.0	1,225	6.0
Farms with sales under \$2,500.....	12,961	7,100	54.8	619	4.8	6,480	50.0
Middle Atlantic, all farms.....	144,731	118,719	82.0	5,426	3.7	31,438	21.7
Farms with sales of \$2,500 and over.....	74,150	70,673	95.3	2,496	3.4	5,973	8.1
Farms with sales under \$2,500.....	70,581	48,046	68.1	2,930	4.2	25,465	36.1
New York, all farms.....	56,199	47,152	83.9	899	1.6	9,946	17.7
Farms with sales of \$2,500 and over.....	34,622	31,227	90.2	659	1.9	4,054	11.7
Farms with sales under \$2,500.....	21,577	15,925	73.8	240	1.1	5,892	27.3
New Jersey, all farms.....	8,624	7,286	84.5	466	5.4	1,804	20.9
Farms with sales of \$2,500 and over.....	5,097	5,222	102.5	406	8.0	281	5.5
Farms with sales under \$2,500.....	3,527	2,064	58.5	60	1.7	1,523	43.2
Pennsylvania, all farms.....	79,908	64,281	80.4	4,061	5.0	19,688	24.6
Farms with sales of \$2,500 and over.....	34,431	34,224	99.4	1,431	4.2	1,638	4.8
Farms with sales under \$2,500.....	45,477	30,057	66.1	2,630	5.8	18,050	39.7
East North Central, all farms.....	545,137	486,847	89.3	9,861	1.8	68,151	12.5
Farms with sales of \$2,500 and over.....	348,575	338,172	97.0	6,215	1.8	16,618	4.8
Farms with sales under \$2,500.....	196,562	148,675	75.6	3,646	1.8	51,533	26.2
Ohio, all farms.....	122,782	106,101	86.4	646	0.5	17,327	14.1
Farms with sales of \$2,500 and over.....	63,641	62,064	97.5	646	1.0	2,223	3.5
Farms with sales under \$2,500.....	59,141	44,037	74.5	-	0.0	15,104	25.5
Indiana, all farms.....	111,483	99,250	89.0	3,122	2.8	15,355	13.8
Farms with sales of \$2,500 and over.....	73,671	71,135	96.5	2,388	3.2	4,924	6.7
Farms with sales under \$2,500.....	37,812	28,115	74.3	734	1.9	10,431	27.6
Illinois, all farms.....	114,390	101,416	88.6	1,645	1.4	14,619	12.8
Farms with sales of \$2,500 and over.....	87,062	85,137	97.8	1,645	1.9	3,570	4.1
Farms with sales under \$2,500.....	27,328	16,279	59.6	-	0.0	11,049	40.4
Michigan, all farms.....	88,335	83,028	94.0	3,903	4.4	9,210	10.4
Farms with sales of \$2,500 and over.....	48,060	46,571	96.9	991	2.1	2,480	5.2
Farms with sales under \$2,500.....	40,275	36,457	90.5	2,912	7.2	6,730	16.7
Wisconsin, all farms.....	108,147	97,052	89.7	545	0.5	11,640	10.8
Farms with sales of \$2,500 and over.....	76,141	73,265	96.2	545	0.7	3,421	4.5
Farms with sales under \$2,500.....	32,006	23,787	74.3	-	0.0	8,219	25.7
West North Central, all farms.....	598,055	548,137	91.7	16,565	2.8	66,483	11.1
Farms with sales of \$2,500 and over.....	478,140	466,532	97.6	15,838	3.3	27,446	5.7
Farms with sales under \$2,500.....	119,915	81,605	68.0	727	0.6	39,037	32.6
Minnesota, all farms.....	108,138	96,102	88.8	4,251	3.9	16,287	15.1
Farms with sales of \$2,500 and over.....	82,051	80,651	98.3	4,251	5.2	5,651	6.9
Farms with sales under \$2,500.....	26,087	15,451	59.2	-	-	10,636	40.8
Iowa, all farms.....	145,163	137,248	94.5	3,168	2.1	11,083	7.6
Farms with sales of \$2,500 and over.....	129,378	126,105	97.5	3,168	2.4	6,441	4.9
Farms with sales under \$2,500.....	15,785	11,143	70.6	-	-	4,642	29.4
Missouri, all farms.....	124,941	109,272	87.5	4,006	3.2	19,675	15.7
Farms with sales of \$2,500 and over.....	79,704	78,854	98.9	3,279	4.1	4,129	5.2
Farms with sales under \$2,500.....	45,237	30,418	67.2	727	1.6	15,546	34.4
North Dakota, all farms.....	40,327	39,841	98.8	1,863	4.1	2,139	5.3
Farms with sales of \$2,500 and over.....	36,432	36,795	101.0	1,653	4.5	1,290	3.5
Farms with sales under \$2,500.....	3,895	3,046	78.2	-	-	849	21.8
South Dakota, all farms.....	40,158	38,665	96.3	812	2.0	2,305	5.7
Farms with sales of \$2,500 and over.....	34,795	33,955	97.6	812	2.3	1,652	4.7
Farms with sales under \$2,500.....	5,363	4,710	87.8	-	-	653	12.2
Nebraska, all farms.....	64,607	59,715	92.4	1,481	2.3	6,373	9.9
Farms with sales of \$2,500 and over.....	57,689	54,583	94.6	1,481	2.6	4,587	8.0
Farms with sales under \$2,500.....	6,918	5,132	74.2	-	-	1,786	25.8
Kansas, all farms.....	74,721	67,294	90.1	1,194	1.6	8,621	11.5
Farms with sales of \$2,500 and over.....	58,091	55,589	95.7	1,194	2.1	3,696	6.4
Farms with sales under \$2,500.....	16,630	11,705	70.4	-	-	4,925	29.6

Note: Includes an estimated 1,261 abnormal farms. Figures are estimates based on a sample and are subject to sampling errors. See tables 10 and 11. Data is also subject to nonsampling errors which result in differences in census farm counts and average check estimated farm counts. See text, Accuracy of the Estimates.

¹Data not individually reported for the following States: Maine, New Hampshire, Vermont, Massachusetts, Rhode Island, and Connecticut.

Table 7. Number of Farms by Components of Coverage by Value of Products Sold Including Adjustments for Nonrespondents—Continued

	Estimated total farms	Included in census		Overcounted in census		Missed in census	
		Number of farms	Percent of estimated total	Number of farms	Percent of estimated total	Number of farms	Percent of estimated total
South Atlantic, all farms.....	390,268	314,600	80.6	10,912	2.8	86,580	22.2
Farms with sales of \$2,500 and over.....	177,424	170,066	95.9	6,750	3.8	14,108	7.9
Farms with sales under \$2,500.....	212,844	144,534	67.9	4,162	1.9	72,472	34.0
Maryland and Delaware, all farms.....	21,071	19,257	91.4	1,872	8.9	3,686	17.5
Farms with sales of \$2,500 and over.....	15,280	14,823	97.0	762	5.0	1,219	8.0
Farms with sales under \$2,500.....	5,791	4,434	76.6	1,110	19.2	2,467	42.6
Virginia, all farms.....	72,136	55,475	76.9	741	1.0	17,402	24.1
Farms with sales of \$2,500 and over.....	28,947	27,097	93.6	589	2.0	2,439	8.4
Farms with sales under \$2,500.....	43,189	28,378	65.7	152	0.3	14,963	34.6
West Virginia, all farms.....	29,696	19,427	65.4	922	3.1	11,191	37.7
Farms with sales of \$2,500 and over.....	4,427	4,700	106.2	498	11.2	225	5.0
Farms with sales under \$2,500.....	25,269	14,727	58.3	424	1.7	10,966	43.4
North Carolina, all farms.....	140,932	119,345	84.7	4,186	3.0	25,773	18.3
Farms with sales of \$2,500 and over.....	68,328	64,872	94.9	2,336	3.4	5,792	8.5
Farms with sales under \$2,500.....	72,604	54,473	75.0	1,850	2.5	19,981	27.5
South Carolina, all farms.....	41,728	33,401	80.1	898	2.2	9,225	22.1
Farms with sales of \$2,500 and over.....	15,399	14,626	95.0	272	1.8	1,045	6.8
Farms with sales under \$2,500.....	26,329	18,775	71.3	626	2.4	8,180	31.1
Georgia, all farms.....	54,316	45,136	83.1	1,688	3.1	10,868	20.0
Farms with sales of \$2,500 and over.....	31,088	30,529	98.2	1,688	5.4	2,247	7.2
Farms with sales under \$2,500.....	23,228	14,607	62.9	-	-	8,621	37.1
Florida, all farms.....	30,389	22,559	74.2	605	2.0	8,435	27.8
Farms with sales of \$2,500 and over.....	13,955	13,419	96.2	605	4.3	1,141	8.1
Farms with sales under \$2,500.....	16,434	9,140	55.6	-	-	7,294	44.4
East South Central, all farms.....	392,441	308,392	78.6	9,489	2.4	93,538	23.8
Farms with sales of \$2,500 and over.....	141,075	137,277	97.3	5,971	4.2	9,769	6.9
Farms with sales under \$2,500.....	251,366	171,115	68.1	3,518	1.4	83,769	33.3
Kentucky, all farms.....	109,155	94,039	86.2	3,111	2.9	18,227	16.7
Farms with sales of \$2,500 and over.....	53,018	50,865	95.9	2,198	4.1	4,351	8.2
Farms with sales under \$2,500.....	56,137	43,174	76.9	913	1.6	13,876	24.7
Tennessee, all farms.....	128,835	100,210	77.7	4,809	3.7	33,434	26.0
Farms with sales of \$2,500 and over.....	41,447	42,044	101.4	2,996	7.2	2,399	5.8
Farms with sales under \$2,500.....	87,388	58,166	66.6	1,813	2.1	31,035	35.5
Alabama, all farms.....	69,412	51,191	73.7	770	1.1	18,991	27.4
Farms with sales of \$2,500 and over.....	24,029	22,751	94.7	303	1.3	1,581	6.6
Farms with sales under \$2,500.....	45,383	28,440	62.6	467	1.0	17,410	38.4
Mississippi, all farms.....	85,039	62,952	74.0	799	0.9	22,886	26.9
Farms with sales of \$2,500 and over.....	22,581	21,617	95.7	474	2.1	1,438	6.4
Farms with sales under \$2,500.....	62,458	41,335	66.2	325	0.5	21,448	34.3
West South Central, all farms.....	348,953	286,404	82.1	10,084	2.9	72,633	20.8
Farms with sales of \$2,500 and over.....	175,150	167,742	95.8	6,688	3.8	14,096	8.0
Farms with sales under \$2,500.....	173,803	118,662	68.3	3,396	2.0	58,537	33.7
Arkansas, all farms.....	62,633	51,308	81.9	2,302	3.7	13,627	21.8
Farms with sales of \$2,500 and over.....	27,374	26,685	97.5	790	2.9	1,479	5.4
Farms with sales under \$2,500.....	35,259	24,623	69.8	1,512	4.3	12,148	34.5
Louisiana, all farms.....	48,505	33,918	69.9	1,229	2.5	15,816	32.6
Farms with sales of \$2,500 and over.....	16,748	15,283	91.3	1,053	6.3	2,518	15.0
Farms with sales under \$2,500.....	31,757	18,635	58.7	176	0.6	13,298	41.9
Oklahoma, all farms.....	73,630	61,369	83.3	1,856	2.5	14,117	19.2
Farms with sales of \$2,500 and over.....	44,668	44,109	98.7	1,856	4.1	2,415	5.4
Farms with sales under \$2,500.....	28,962	17,260	59.6	-	-	11,702	40.4
Texas, all farms.....	164,185	139,809	85.2	4,697	2.9	29,073	17.7
Farms with sales of \$2,500 and over.....	86,360	81,665	94.6	2,989	3.5	7,684	8.9
Farms with sales under \$2,500.....	77,825	58,144	74.7	1,708	2.2	21,389	27.5
Mountain, all farms ¹	125,577	109,195	87.0	3,459	2.8	19,841	15.8
Farms with sales of \$2,500 and over.....	89,770	86,265	96.1	3,459	3.9	6,964	7.8
Farms with sales under \$2,500.....	35,807	22,930	64.0	-	-	12,877	36.0
Pacific, all farms ²	129,709	102,485	79.0	3,077	2.4	30,301	23.4
Farms with sales of \$2,500 and over.....	81,356	77,467	95.2	2,607	3.2	6,496	8.0
Farms with sales under \$2,500.....	48,353	25,018	51.7	470	0.9	23,805	49.2
Washington, all farms.....	47,712	32,878	68.9	414	0.9	15,248	32.0
Farms with sales of \$2,500 and over.....	26,656	24,505	91.9	414	1.5	2,565	9.6
Farms with sales under \$2,500.....	21,056	8,373	39.8	-	-	12,683	60.2
Oregon, all farms.....	27,979	22,558	80.6	641	2.3	6,062	21.7
Farms with sales of \$2,500 and over.....	17,378	16,585	95.4	388	2.2	1,181	6.8
Farms with sales under \$2,500.....	10,601	5,973	56.3	253	2.4	4,881	46.1
California, all farms.....	54,018	47,049	87.1	2,022	3.7	8,991	16.6
Farms with sales of \$2,500 and over.....	37,322	36,377	97.5	1,805	4.8	2,750	7.3
Farms with sales under \$2,500.....	16,696	10,672	63.9	217	1.3	6,241	37.4

¹Note: Includes an estimated 1,261 abnormal farms. Figures are estimates based on a sample and are subject to sampling errors. See tables 10 and 11. Data is also subject to nonsampling errors which result in differences in census farm counts and coverage check estimated counts. See text, Accuracy of the Estimates.

²Data not individually reported for the following States: Montana, Idaho, Wyoming, Colorado, New Mexico, Arizona, Utah, and Nevada.

³Does not include data for Alaska and Hawaii.

Evaluation of Coverage

1969 Census of Agriculture
Regions and Selected StatesTable 8. Number of Farms by Components of Coverage by Value of Products Sold Excluding
Adjustments for Nonrespondents

	Estimated total farms	Included in census		Overcounted in census		Missed in census	
		Number of farms	Percent of estimated total	Number of farms	Percent of estimated total	Number of farms	Percent of estimated total
United States, all farms.....	2,462,322	2,039,550	82.8	53,898	2.2	476,670	19.4
Farms with sales of \$2,500 and over.....	1,435,593	1,371,626	95.5	38,728	2.7	102,695	7.2
Farms with sales under \$2,500.....	1,026,729	667,924	65.1	15,170	1.5	373,975	36.4
The Northeast, all farms.....	154,900	120,193	77.6	4,436	2.9	39,143	25.3
Farms with sales of \$2,500 and over.....	82,772	77,725	93.9	2,151	2.6	7,198	8.7
Farms with sales under \$2,500.....	72,128	42,468	58.9	2,285	3.2	31,945	44.3
The North Central, all farms.....	1,033,990	919,559	88.9	20,203	2.0	134,634	13.1
Farms with sales of \$2,500 and over.....	754,573	726,898	96.3	16,389	2.2	44,064	5.9
Farms with sales under \$2,500.....	279,417	192,661	69.0	3,814	1.4	90,570	32.4
The South, all farms.....	1,041,377	813,142	78.1	24,516	2.4	252,751	24.3
Farms with sales of \$2,500 and over.....	444,298	422,069	95.0	15,744	3.5	37,973	8.5
Farms with sales under \$2,500.....	597,079	391,073	65.5	8,772	1.5	214,778	36.0
The West, all farms.....	232,055	186,656	80.4	4,743	2.0	50,142	21.6
Farms with sales of \$2,500 and over.....	153,950	144,934	94.1	4,444	2.8	13,460	8.7
Farms with sales under \$2,500.....	78,105	41,722	53.4	299	0.4	36,682	47.0
New England, all farms ¹	28,150	21,568	76.6	1,123	4.0	7,705	27.4
Farms with sales of \$2,500 and over.....	17,048	16,455	96.5	632	3.7	1,225	7.2
Farms with sales under \$2,500.....	11,102	5,113	46.0	491	4.4	6,480	58.4
Middle Atlantic, all farms.....	126,750	98,625	77.8	3,313	2.6	31,438	24.8
Farms with sales of \$2,500 and over.....	65,724	61,270	93.2	1,519	2.3	5,973	9.1
Farms with sales under \$2,500.....	61,026	37,355	61.2	1,794	2.9	25,465	41.7
New York, all farms.....	49,597	40,068	80.8	417	0.8	9,946	20.0
Farms with sales of \$2,500 and over.....	30,328	26,620	87.7	346	1.1	4,054	13.4
Farms with sales under \$2,500.....	19,269	13,448	69.8	71	0.4	5,892	30.6
New Jersey, all farms.....	7,595	5,977	78.6	186	2.4	1,804	23.8
Farms with sales of \$2,500 and over.....	4,209	4,093	97.2	165	3.9	281	6.7
Farms with sales under \$2,500.....	3,386	1,884	55.6	21	0.6	1,523	45.0
Pennsylvania, all farms.....	69,558	52,580	75.6	2,710	3.9	19,688	28.3
Farms with sales of \$2,500 and over.....	31,187	30,557	98.0	1,008	3.2	1,638	5.2
Farms with sales under \$2,500.....	38,371	22,023	57.4	1,702	4.4	18,050	47.0
East North Central, all farms.....	486,426	426,486	87.7	8,211	1.7	68,151	14.0
Farms with sales of \$2,500 and over.....	316,980	305,193	96.3	4,831	1.5	16,618	5.2
Farms with sales under \$2,500.....	169,446	121,293	71.6	3,380	2.0	51,533	30.4
Ohio, all farms.....	104,304	87,209	83.6	232	0.2	17,327	16.6
Farms with sales of \$2,500 and over.....	57,751	55,760	96.6	232	0.4	2,223	3.8
Farms with sales under \$2,500.....	46,553	31,449	67.6	-	-	15,104	32.4
Indiana, all farms.....	99,379	86,960	87.5	2,936	3.0	15,355	15.5
Farms with sales of \$2,500 and over.....	66,543	63,897	96.0	2,278	3.4	4,924	7.4
Farms with sales under \$2,500.....	32,836	23,063	70.2	658	2.0	10,431	31.8
Illinois, all farms.....	103,917	90,487	87.0	1,189	1.1	14,619	14.1
Farms with sales of \$2,500 and over.....	78,084	75,703	96.9	1,189	1.5	3,570	4.6
Farms with sales under \$2,500.....	25,833	14,784	57.2	-	-	11,049	42.8
Michigan, all farms.....	75,068	69,432	92.5	3,574	4.8	9,210	12.3
Farms with sales of \$2,500 and over.....	42,451	40,823	96.2	852	2.0	2,480	5.8
Farms with sales under \$2,500.....	32,617	28,609	87.7	2,722	8.3	6,730	20.6
Wisconsin, all farms.....	103,758	92,398	89.1	280	0.3	11,640	11.2
Farms with sales of \$2,500 and over.....	72,151	69,010	95.7	280	0.4	3,421	4.7
Farms with sales under \$2,500.....	31,607	23,388	74.0	-	-	8,219	26.0
West North Central, all farms.....	547,564	493,073	90.0	11,992	2.1	66,483	12.1
Farms with sales of \$2,500 and over.....	437,593	421,705	96.4	11,558	2.6	27,446	6.2
Farms with sales under \$2,500.....	109,971	71,368	64.9	434	.4	39,037	35.5
Minnesota, all farms.....	97,282	84,391	86.7	3,396	3.4	16,287	16.7
Farms with sales of \$2,500 and over.....	72,187	69,932	96.9	3,396	4.7	5,651	7.8
Farms with sales under \$2,500.....	25,095	14,459	57.6	-	-	10,636	42.4
Iowa, all farms.....	132,195	123,034	93.1	1,922	1.5	11,083	8.4
Farms with sales of \$2,500 and over.....	118,705	114,186	96.2	1,922	1.6	6,441	5.4
Farms with sales under \$2,500.....	13,490	8,848	65.6	-	-	4,642	34.4
Missouri, all farms.....	114,844	98,386	85.7	3,217	2.8	19,675	17.1
Farms with sales of \$2,500 and over.....	73,357	72,011	98.2	2,783	3.8	4,129	5.6
Farms with sales under \$2,500.....	41,487	26,375	63.5	434	1.0	15,546	37.5
North Dakota, all farms.....	37,107	36,162	97.4	1,194	3.2	2,139	5.8
Farms with sales of \$2,500 and over.....	33,414	33,318	99.7	1,194	3.6	1,290	3.9
Farms with sales under \$2,500.....	3,693	2,844	77.0	-	-	849	23.0
South Dakota, all farms.....	36,483	34,699	95.1	521	1.4	2,305	6.3
Farms with sales of \$2,500 and over.....	32,197	31,066	96.5	521	1.6	1,652	5.1
Farms with sales under \$2,500.....	4,286	3,633	84.8	-	-	653	15.2
Nebraska, all farms.....	59,350	54,021	91.0	1,044	1.7	5,373	10.7
Farms with sales of \$2,500 and over.....	53,471	49,928	93.4	1,044	2.0	4,587	8.6
Farms with sales under \$2,500.....	5,879	4,093	69.6	-	-	1,786	30.4
Kansas, all farms.....	70,303	62,380	88.7	698	1.0	8,621	12.3
Farms with sales of \$2,500 and over.....	54,262	51,264	94.5	698	1.3	3,696	6.8
Farms with sales under \$2,500.....	16,041	11,116	69.3	-	-	4,925	30.7

Note: Includes an estimated 1,261 abnormal farms. Figures are estimates based on a sample and are subject to sampling errors. See tables 10 and 11. Data is also subject to nonsampling errors which result in differences in census farm counts and coverage check estimated farm counts. See text, Accuracy of the Estimates.

¹Data not individually reported for the following States: Maine, New Hampshire, Vermont, Massachusetts, Rhode Island, and Connecticut.

Table 8. Number of Farms by Components of Coverage by Value of Products Sold Excluding Adjustments for Nonrespondents—Continued

	Estimated total farms	Included in census		Overcounted in census		Missed in census	
		Number of farms	Percent of estimated total	Number of farms	Percent of estimated total	Number of farms	Percent of estimated total
South Atlantic, all farms.....	362,629	285,537	78.7	9,488	2.6	86,580	23.9
Farms with sales of \$2,500 and over.....	163,612	155,218	94.9	5,714	3.5	14,108	8.6
Farms with sales under \$2,500.....	199,017	130,319	65.5	3,774	1.9	72,472	36.4
Maryland and Delaware, all farms.....	19,350	17,232	89.1	1,568	8.1	3,686	19.0
Farms with sales of \$2,500 and over.....	13,488	12,798	94.9	529	3.9	1,219	9.0
Farms with sales under \$2,500.....	5,862	4,434	75.6	1,039	17.7	2,467	42.1
Virginia, all farms.....	61,430	44,683	72.8	655	1.1	17,402	28.3
Farms with sales of \$2,500 and over.....	25,687	23,811	92.7	563	2.2	2,439	9.5
Farms with sales under \$2,500.....	35,743	20,872	58.4	92	0.3	14,963	41.9
West Virginia, all farms.....	28,870	18,515	64.1	836	2.9	11,191	38.8
Farms with sales of \$2,500 and over.....	4,092	4,330	105.8	463	11.3	225	5.5
Farms with sales under \$2,500.....	24,778	14,185	57.2	373	1.5	10,966	44.3
North Carolina, all farms.....	134,326	112,079	83.4	3,526	2.6	25,773	19.2
Farms with sales of \$2,500 and over.....	63,361	59,409	93.8	1,840	2.9	5,792	9.1
Farms with sales under \$2,500.....	70,965	52,670	74.2	1,686	2.4	19,981	28.2
South Carolina, all farms.....	40,494	32,087	79.2	818	2.0	9,225	22.8
Farms with sales of \$2,500 and over.....	14,820	14,009	94.5	234	1.6	1,045	7.1
Farms with sales under \$2,500.....	25,674	18,078	70.4	584	2.3	8,180	31.9
Georgia, all farms.....	50,765	41,441	81.6	1,544	3.0	10,868	21.4
Farms with sales of \$2,500 and over.....	29,710	29,007	97.6	1,544	5.2	2,247	7.6
Farms with sales under \$2,500.....	21,055	12,434	59.1	-	-	8,621	40.9
Florida, all farms.....	27,394	19,500	71.2	541	2.0	8,435	30.8
Farms with sales of \$2,500 and over.....	12,454	11,854	95.1	541	4.3	1,141	9.2
Farms with sales under \$2,500.....	14,940	7,646	51.2	-	-	7,294	48.8
East South Central, all farms.....	359,447	273,201	76.0	7,292	2.0	93,538	26.0
Farms with sales of \$2,500 and over.....	123,990	119,182	96.1	4,961	4.0	9,769	7.9
Farms with sales under \$2,500.....	235,457	154,019	65.4	2,331	1.0	83,769	35.6
Kentucky, all farms.....	100,913	85,402	84.6	2,716	2.7	18,227	18.1
Farms with sales of \$2,500 and over.....	48,394	46,019	95.1	1,976	4.1	4,351	9.0
Farms with sales under \$2,500.....	52,519	39,383	75.0	74.0	1.4	13,876	26.4
Tennessee, all farms.....	116,401	87,113	74.8	4,146	3.5	33,434	28.7
Farms with sales of \$2,500 and over.....	35,059	35,316	100.7	2,656	7.5	2,399	6.8
Farms with sales under \$2,500.....	81,342	51,797	63.7	1,490	1.8	31,035	38.1
Alabama, all farms.....	61,846	42,855	69.3	-	-	18,991	30.7
Farms with sales of \$2,500 and over.....	19,823	18,242	92.0	-	-	1,581	8.0
Farms with sales under \$2,500.....	42,023	24,613	58.6	-	-	17,410	41.4
Mississippi, all farms.....	80,287	57,831	72.0	430	0.5	22,886	28.5
Farms with sales of \$2,500 and over.....	20,714	19,605	94.7	329	1.6	1,438	6.9
Farms with sales under \$2,500.....	59,573	38,226	64.2	101	0.2	21,448	36.0
West South Central, all farms.....	319,301	254,404	79.7	7,736	2.4	72,633	22.7
Farms with sales of \$2,500 and over.....	156,696	147,669	94.2	5,069	3.2	14,096	9.0
Farms with sales under \$2,500.....	162,605	106,735	65.6	2,667	1.6	58,537	36.0
Arkansas, all farms.....	56,966	45,285	79.5	1,946	3.4	13,627	23.9
Farms with sales of \$2,500 and over.....	23,935	23,030	96.2	574	2.4	1,479	6.2
Farms with sales under \$2,500.....	33,031	22,255	67.4	1,372	4.2	12,148	36.8
Louisiana, all farms.....	46,549	31,905	68.5	1,172	2.5	15,816	34.0
Farms with sales of \$2,500 and over.....	15,185	13,675	90.0	1,008	6.6	2,518	16.6
Farms with sales under \$2,500.....	31,364	18,230	58.1	164	0.5	13,298	42.4
Oklahoma, all farms.....	67,192	54,311	80.8	1,236	1.8	14,117	21.0
Farms with sales of \$2,500 and over.....	39,973	38,794	97.1	1,236	3.1	2,415	6.0
Farms with sales under \$2,500.....	27,219	15,517	57.0	-	-	11,702	43.0
Texas, all farms.....	148,594	122,903	82.7	3,382	2.3	29,073	19.6
Farms with sales of \$2,500 and over.....	77,603	72,170	93.0	2,251	2.9	7,684	9.9
Farms with sales under \$2,500.....	70,991	50,733	71.5	1,131	1.6	21,389	30.1
Mountain, all farms ¹	114,535	97,560	85.2	2,866	2.5	19,841	17.3
Farms with sales of \$2,500 and over.....	82,131	78,033	95.0	2,866	3.5	6,964	8.5
Farms with sales under \$2,500.....	32,404	19,527	60.3	-	-	12,877	39.7
Pacific, all farms ²	117,520	89,096	75.8	1,877	1.6	30,301	25.8
Farms with sales of \$2,500 and over.....	71,819	66,901	93.2	1,578	2.2	6,496	9.0
Farms with sales under \$2,500.....	45,701	22,195	48.6	299	0.7	23,805	52.1
Washington, all farms.....	44,755	29,705	66.3	198	0.4	15,248	34.1
Farms with sales of \$2,500 and over.....	24,227	21,860	90.2	198	0.8	2,565	10.6
Farms with sales under \$2,500.....	20,528	7,845	38.2	-	-	12,683	61.8
Oregon, all farms.....	24,185	18,605	76.9	482	2.0	6,062	25.1
Farms with sales of \$2,500 and over.....	14,965	14,071	94.0	287	1.9	1,181	7.9
Farms with sales under \$2,500.....	9,220	4,534	49.2	195	2.1	4,881	52.9
California, all farms.....	48,580	40,786	84.0	1,197	2.5	8,991	18.5
Farms with sales of \$2,500 and over.....	32,627	30,970	94.9	1,093	3.3	2,750	8.4
Farms with sales under \$2,500.....	15,953	9,816	61.6	104	0.7	6,241	39.1

Note: Includes an estimated 1,261 abnormal farms. Figures are estimates based on a sample and are subject to sampling errors. See tables 10 and 11. Data is also subject to nonsampling errors which result in differences in census farm counts and coverage check estimated farm counts. See text, Accuracy of the Estimates.

¹Data not individually reported for the following States: Montana, Idaho, Wyoming, Colorado, New Mexico, Arizona, Utah, and Nevada.

²Does not include data for Alaska and Hawaii.

Evaluation of Coverage

1969 Census of Agriculture
Regions and Selected States

Table 9. Characteristics of Farms Missed in the Census

	United States						Middle Atlantic				East North Central		
	Total	Northeast	The North Central	The South	The West	New England total ¹	Total	New York	New Jersey	Pennsylvania	Total	Ohio	Indiana
Number of missed farms.....	476,670	39,143	134,634	252,751	50,142	7,705	31,438	9,946	1,804	19,688	66,151	17,327	15,355
Land in farms.....	56,360,304	3,012,141	17,875,095	24,928,805	10,544,263	767,299	2,244,842	1,030,774	78,404	1,135,664	6,232,403	1,102,441	2,113,074
Average size of farm.....	118	76	132	98	210	100	71	103	43	57	91	63	137
Corn for grain.....farms..	96,140	8,051	35,700	50,903	1,486	88	7,963	565	298	7,100	18,952	5,693	5,393
acres..	2,349,694	69,921	1,728,313	507,437	44,023	264	69,657	10,674	2,923	56,060	819,363	113,420	508,356
Sorghums for grain.....farms..	7,142	36	4,288	1,361	599	-	36	-	36	-	486	-	332
acres..	370,895	234	228,393	119,271	20,423	-	234	-	234	-	3,840	-	1,992
Wheat.....farms..	20,642	2,516	11,556	3,584	2,986	-	2,516	777	78	1,661	4,798	2,478	1,172
acres..	879,981	18,831	545,628	142,645	172,877	-	18,831	5,966	432	12,433	57,416	26,338	13,190
Soybeans.....farms..	33,412	48	20,669	12,695	-	-	48	-	48	-	10,445	2,411	3,471
acres..	1,496,212	1,338	1,056,469	438,405	-	-	1,338	-	1,338	-	562,366	88,066	325,730
Hay.....farms..	147,107	21,309	55,669	53,463	16,666	4,713	16,596	5,242	374	10,980	28,280	6,966	4,083
acres..	2,795,235	391,435	1,212,179	673,845	517,776	102,539	288,896	141,214	6,287	141,395	530,374	81,002	66,648
Cotton.....farms..	11,929	-	364	11,028	537	-	-	-	-	-	-	-	-
acres..	308,240	-	3,458	285,847	18,935	-	-	-	-	-	-	-	-
Tobacco.....farms..	34,734	159	1,040	33,535	-	-	159	-	-	159	1,040	516	524
acres..	71,456	344	907	70,205	-	-	344	-	-	344	907	645	262
Cattle and calves.....farms..	297,753	23,637	76,913	163,800	33,403	4,713	18,924	6,364	334	12,226	34,355	9,191	7,262
number..	5,819,584	319,481	1,936,134	2,631,685	932,284	71,214	248,267	135,996	2,983	109,288	652,229	93,893	154,299
Hogs and pigs.....farms..	123,416	6,078	32,345	79,016	5,977	894	5,184	1,654	124	3,406	15,210	4,076	2,237
number..	2,818,818	50,097	1,586,471	1,068,399	113,851	4,553	45,544	5,793	2,602	37,149	719,110	186,159	137,664
Hens and pullets.....farms..	137,851	8,515	37,768	83,027	8,541	1,752	6,763	2,644	421	3,698	18,320	4,750	4,282
number..	14,198,839	1,432,375	2,973,656	9,260,796	532,012	55,598	1,376,777	274,852	531,899	570,026	1,091,641	167,891	224,025
Total value of products sold.farms..	453,419	37,384	129,250	238,890	47,895	7,497	29,887	9,705	1,804	18,378	65,644	16,031	15,104
dollars (1,000)..	1,501,766	185,297	620,545	480,424	215,500	26,113	159,184	123,476	9,847	25,861	289,943	32,870	128,578

	East North Central—Continued			West North Central							
	Illinois	Michigan	Wisconsin	Total	Minnesota	Iowa	Missouri	North Dakota	South Dakota	Nebraska	Kansas
Number of missed farms.....	14,619	9,210	11,640	66,483	16,287	11,083	19,675	2,139	2,305	6,373	8,621
Land in farms.....	805,156	793,885	1,417,847	11,642,692	2,429,439	1,748,061	1,804,668	1,116,154	1,045,359	1,324,263	2,174,748
Average size of farm.....	55	86	121	175	149	157	91	521	453	207	252
Corn for grain.....farms..	3,583	2,468	1,815	16,748	3,963	7,018	1,226	-	918	2,523	1,100
acres..	101,890	54,904	40,793	908,950	232,434	328,848	34,688	-	114,196	175,684	23,100
Sorghums for grain.....farms..	-	154	-	3,802	-	-	-	-	540	1,295	1,710
acres..	-	1,848	-	224,553	-	-	-	-	48,600	64,123	111,573
Wheat.....farms..	581	567	-	6,758	274	-	478	892	158	1,556	3,400
acres..	12,886	5,002	-	488,212	20,550	-	12,932	184,886	6,750	77,429	185,665
Soybeans.....farms..	4,060	503	-	10,224	1,762	4,222	1,020	-	-	1,935	1,285
acres..	141,800	6,770	-	494,103	150,047	196,573	39,932	-	-	64,089	43,462
Hay.....farms..	3,005	6,505	7,721	27,389	8,651	5,660	5,185	884	1,331	2,786	2,892
acres..	58,024	155,039	169,661	681,805	225,584	92,368	71,920	52,063	75,930	97,711	66,229
Cotton.....farms..	-	-	-	364	-	-	-	-	-	-	-
acres..	-	-	-	3,458	-	-	3,458	-	-	-	-
Tobacco.....farms..	-	-	-	-	-	-	-	-	-	-	-
acres..	-	-	-	-	-	-	-	-	-	-	-
Cattle and calves.....farms..	6,356	6,042	5,504	42,558	8,535	6,878	14,175	1,411	1,840	4,404	5,315
number..	127,219	112,805	164,013	1,283,905	205,703	301,107	211,994	64,245	112,248	178,169	210,439
Hogs and pigs.....farms..	5,654	1,966	1,277	17,335	1,860	4,147	5,852	279	1,103	2,029	1,865
number..	267,051	66,150	62,086	867,361	102,318	429,202	176,614	1,457	39,444	48,299	70,027
Hens and pullets.....farms..	3,445	3,247	2,596	19,448	2,999	2,800	5,985	1,151	1,204	2,661	2,648
number..	288,610	155,385	255,730	1,882,015	321,159	393,609	373,367	134,070	283,450	306,956	69,404
Total value of products sold.farms..	14,619	8,855	11,035	63,606	15,978	11,083	17,201	2,045	2,305	6,373	8,621
dollars (1,000)..	57,738	30,760	39,997	330,602	78,282	89,537	44,972	11,944	26,084	47,927	31,856

	South Atlantic						East South Central						
	Total	Delaware and Maryland	Virginia	West Virginia	North Carolina	South Carolina	Georgia	Florida	Total	Kentucky	Tennessee	Alabama	Mississippi
Number of missed farms.....	86,580	3,686	17,402	11,191	25,773	9,225	10,868	8,435	93,538	18,227	33,434	18,991	22,886
Land in farms.....	7,060,541	358,268	1,758,263	1,166,621	1,295,007	408,576	1,086,351	987,455	6,399,244	1,458,642	1,835,720	1,287,776	1,817,106
Average size of farm.....	82	97	101	104	50	44	99	117	68	80	54	67	79
Corn for grain.....farms..	24,969	1,347	5,159	861	9,857	3,359	3,711	575	21,487	4,334	4,879	5,563	6,711
acres..	280,354	28,019	32,572	3,876	105,460	18,069	58,535	33,823	198,958	55,157	52,075	52,885	38,841
Sorghums for grain.....farms..	858	-	-	-	858	-	-	-	436	220	216	-	-
acres..	2,574	-	-	-	2,574	-	-	-	65,020	220	64,800	-	-
Wheat.....farms..	1,740	262	216	74	962	160	-	66	604	388	216	-	-
acres..	10,576	5,910	824	580	1,924	480	-	858	30,248	8,648	21,600	-	-
Soybeans.....farms..	6,873	655	957	-	3,806	881	435	139	3,788	1,725	410	178	1,475
acres..	91,242	20,476	13,984	-	31,227	9,786	6,350	9,419	133,854	15,337	29,897	890	87,730
Hay.....farms..	22,505	1,560	7,854	7,451	3,324	557	1,117	642	21,493	7,396	11,271	1,197	1,629
acres..	247,539	41,694	90,161	71,866	27,134	1,386	13,042	2,256	282,072	133,341	120,768	15,394	12,569
Cotton.....farms..	2,214	-	184	-	614	1,023	393	-	5,071	-	695	1,813	2,563
acres..	20,881	-	368	-	7,734	7,651	5,128	-	91,443	-	14,620	19,476	57,347
Tobacco.....farms..	12,134	729	1,919	239	7,608	575	912	152	21,401	11,638	9,763	-	-
acres..	42,947	5,849	5,048	119	25,427	1,885	3,998	821	27,258	19,017	8,241	-	-
Cattle and calves.....farms..	45,227	1,728	11,172	8,735	8,487	3,457	7,259	4,389	59,483	9,941	20,045	12,453	17,044
number..	537,306	60,313	94,926	74,759	78,603	28,916	108,224	91,565	793,799	119,869	258,891	213,045	202,194
Hogs and pigs.....farms..	30,395	696	6,060	1,912	10,399	5,470	4,434	1,424	32,638	6,218	10,358	6,277	9,785
number..	592,342	17,866	116,794	9,606	266,481	62,636	94,784	24,185	313,440	67,418	131,509	58,012	56,501
Hens and pullets.....farms..	23,448	516	5,212	4,220	5,757	4,228	1,823	1,692	31,891	5,846	10,306	8,228	7,511
number..	3,341,716	20,265	110,895	103,574	124,803	78,915	2,809,540	93,724	5,055,541	168,158	1,369,474	3,415,336	114,573
Total value of products sold.farms..	81,202	3,686	15,880	11,191	22,924	8,878	10,584	8,059	92,155	18,227	33,326	18,595	22,007
dollars (1,000)..	179,362	22,758	28,483	6,933	52,833	17,174	29,437	21,734	141,895	49,820	37,356	24,423	30,296

Note: Includes an estimated 314 abnormal farms. Figures are estimates based on a sample and are subject to sampling errors. See tables 10 and 11.

¹Data not individually reported for the following States: Maine, New Hampshire, Vermont, Massachusetts, Rhode Island, and Connecticut.

Table 9. Characteristics of Farms Missed in the Census—Continued

	West South Central					Mountain total ¹	Pacific ²			
	Total	Arkansas	Louisiana	Oklahoma	Texas		Total	Washington	Oregon	California
Number of missed farms.....	72,633	13,627	15,816	14,117	29,073	19,841	30,301	15,248	6,062	8,991
Land in farms.....	11,469,020	1,552,887	1,013,073	1,716,451	7,186,609	7,599,350	2,944,913	1,462,815	415,702	1,066,396
Average size of farm.....	158	113	137	121	247	383	97	95	68	118
Corn for grain.....farms..	4,447	256	2,455	399	1,337	1,320	166	44	60	62
acres..	28,125	631	12,977	5,298	9,219	39,536	4,487	2,244	540	1,703
Sorghums for grain.....farms..	925	-	-	113	812	557	42	-	-	42
acres..	54,251	-	-	3,164	51,087	18,722	1,701	-	-	1,701
Wheat.....farms..	1,240	119	-	498	623	2,492	494	107	345	42
acres..	101,821	952	-	28,548	72,321	149,555	23,322	6,478	15,038	1,806
Soybeans.....farms..	2,034	881	774	236	133	-	-	-	-	-
acres..	213,309	173,953	27,964	8,732	2,660	-	-	-	-	-
Hay.....farms..	9,465	2,768	875	2,662	3,160	9,742	6,924	4,044	1,609	1,271
acres..	144,234	37,491	11,581	51,329	43,833	400,806	116,970	60,565	24,132	32,273
Cotton.....farms..	3,743	856	1,337	113	1,437	188	349	-	-	349
acres..	173,523	125,280	20,885	1,243	26,115	10,610	8,325	-	-	8,325
Tobacco.....farms..	-	-	-	-	-	-	-	-	-	-
acres..	-	-	-	-	-	-	-	-	-	-
Cattle and calves.....farms..	59,090	11,398	12,963	12,386	22,343	12,430	20,973	11,847	4,365	4,761
number..	1,300,580	159,925	205,983	216,207	718,465	541,428	390,856	169,649	67,979	153,228
Hogs and pigs.....farms..	15,983	3,283	4,193	2,520	5,987	4,140	1,842	245	633	964
number..	162,617	43,794	19,555	12,473	86,795	82,903	30,948	5,048	15,728	10,172
Hens and pullets.....farms..	27,688	4,206	8,640	6,196	8,646	4,176	4,365	1,884	1,318	1,163
number..	863,539	69,803	351,350	183,741	258,645	127,329	404,683	34,457	44,294	325,932
Total value of products sold.....farms..	65,533	13,499	13,029	14,117	24,888	19,596	28,299	14,018	5,617	8,664
dollars (1,000)..	159,167	37,389	21,346	26,102	74,330	109,996	105,504	25,386	17,005	63,113

¹Note: Includes an estimated 314 abnormal farms. Figures are estimates based on a sample and are subject to sampling errors. See tables 10 and 11.
²Data not individually reported for the following States: Montana, Idaho, Wyoming, Colorado, New Mexico, Arizona, Utah, and Nevada.
³Does not include data for Alaska and Hawaii.

Evaluation of Coverage

1969 Census of Agriculture
United States and Regions

Table 10. Sampling Reliability of Estimates for Number of Farms by Components of Coverage and Value of Sales Class

	Sampling error of estimates				
	Estimated total farms		Number overcounted in census ¹	Missed in census	
	Number	Percent		Number	Percent
United States					
All farms	30,866	1.3	5,359	13,074	2.7
Class 1-5—Sales of \$2,500 and over	20,370	1.4	3,376	5,839	5.7
Class 1—Sales of \$40,000 and over	7,290	3.5	1,261	1,652	27.5
Class 2—Sales of \$20,000 to \$39,999	8,435	3.1	1,544	1,423	13.9
Class 3—Sales of \$10,000 to \$19,999	8,905	2.7	1,385	1,735	10.9
Class 4—Sales of \$5,000 to \$9,999	9,048	3.0	1,372	2,640	9.4
Class 5—Sales of \$2,500 to \$4,999	10,650	3.3	1,878	4,388	10.4
Class 6-8—Sales of under \$2,500	22,804	2.2	4,152	11,557	3.1
Class 6	9,764	4.6	1,220	4,515	6.2
Class 7—Part time	16,643	3.0	3,679	8,657	4.4
Class 8—Part retirement	10,311	3.9	1,042	5,654	5.5
The Northeast					
All farms	6,143	4.0	1,712	3,199	8.2
Class 1-5—Sales of \$2,500 and over	3,808	4.6	495	1,462	20.3
Class 1—Sales of \$40,000 and over	2,023	11.0	306	1,257	68.1
Class 2—Sales of \$20,000 to \$39,999	1,782	7.7	184	298	33.1
Class 3—Sales of \$10,000 to \$19,999	1,429	7.8	312	473	23.3
Class 4—Sales of \$5,000 to \$9,999	1,376	12.5	113	313	31.9
Class 5—Sales of \$2,500 to \$4,999	1,236	10.4	121	396	27.5
Class 6-8—Sales of under \$2,500	4,883	6.8	1,649	2,852	8.9
Class 6	1,163	13.4	71	673	20.2
Class 7—Part time	4,177	9.2	1,136	2,499	11.8
Class 8—Part retirement	2,055	11.3	542	1,008	13.7
The North Central					
All farms	19,152	1.9	3,660	6,761	5.0
Class 1-5—Sales of \$2,500 and over	14,572	1.9	2,530	3,477	7.9
Class 1—Sales of \$40,000 and over	5,522	5.3	1,058	886	47.9
Class 2—Sales of \$20,000 to \$39,999	6,976	4.2	1,164	1,248	21.4
Class 3—Sales of \$10,000 to \$19,999	7,341	3.7	992	1,353	18.4
Class 4—Sales of \$5,000 to \$9,999	6,792	4.4	816	1,916	14.1
Class 5—Sales of \$2,500 to \$4,999	6,871	5.3	1,526	2,120	13.8
Class 6-8—Sales of under \$2,500	12,711	4.5	2,648	5,842	6.5
Class 6	4,238	10.5	-	1,881	17.5
Class 7—Part time	10,280	6.2	2,648	4,421	8.5
Class 8—Part retirement	5,444	7.4	-	3,100	11.1
The South					
All farms	21,372	2.1	3,377	9,628	3.8
Class 1-5—Sales of \$2,500 and over	12,073	2.7	1,957	4,034	10.6
Class 1—Sales of \$40,000 and over	3,777	7.0	519	546	41.4
Class 2—Sales of \$20,000 to \$39,999	3,914	7.0	849	571	22.9
Class 3—Sales of \$10,000 to \$19,999	4,346	5.7	803	891	20.5
Class 4—Sales of \$5,000 to \$9,999	5,358	4.9	1,087	1,694	17.2
Class 5—Sales of \$2,500 to \$4,999	7,060	4.7	1,033	3,433	17.4
Class 6-8—Sales of under \$2,500	17,453	2.9	2,734	8,812	4.1
Class 6	8,590	5.7	1,217	3,913	7.3
Class 7—Part time	11,673	4.1	2,288	6,172	6.2
Class 8—Part retirement	8,099	5.0	871	4,529	7.4
The West ²					
All farms	9,561	4.1	995	4,722	9.4
Class 1-5—Sales of \$2,500 and over	6,508	4.2	962	1,895	14.1
Class 1—Sales of \$40,000 and over	2,073	6.0	325	258	26.2
Class 2—Sales of \$20,000 to \$39,999	1,999	6.8	524	232	22.5
Class 3—Sales of \$10,000 to \$19,999	2,114	6.5	439	404	18.3
Class 4—Sales of \$5,000 to \$9,999	2,263	8.2	150	576	16.2
Class 5—Sales of \$2,500 to \$4,999	3,851	13.0	343	1,679	29.7
Class 6-8—Sales of under \$2,500	5,476	7.0	184	3,693	10.1
Class 6	1,491	14.6	-	1,040	18.8
Class 7—Part time	4,195	7.9	33	3,325	13.2
Class 8—Part retirement	2,618	17.9	181	908	15.3

¹The variance of the overcount component of coverage is based upon very few cases and the coefficient of variation (percent) ranges from 30 to 100 percent.²Does not include data for Alaska and Hawaii.

Table 11. Sampling Reliability of Estimates for Number of Farms by Components of Coverage and Value of Products Sold

	Sampling error of estimates					
	Estimated total farms		Number overcounted in census ¹	Missed in census		
	Number	Percent		Number	Percent	
New England, all farms ²	1,864	6.6	478	958	12.4	
Farms with sales of \$2,500 and over	1,364	8.0	269	345	28.2	
Farms with sales under \$2,500	1,272	11.5	397	910	14.0	
Middle Atlantic, all farms	5,853	4.6	1,644	3,052	9.7	
Farms with sales of \$2,500 and over	3,556	5.4	415	1,421	23.8	
Farms with sales under \$2,500	4,715	7.7	1,600	2,703	10.6	
New York, all farms	3,629	7.3	210	1,701	17.1	
Farms with sales of \$2,500 and over	2,593	8.5	198	1,355	33.4	
Farms with sales under \$2,500	2,437	12.6	71	1,022	17.3	
New Jersey, all farms	697	9.2	58	269	14.9	
Farms with sales of \$2,500 and over	403	9.6	55	109	38.8	
Farms with sales under \$2,500	514	15.2	21	249	16.3	
Pennsylvania, all farms	4,539	6.5	1,629	2,519	12.8	
Farms with sales of \$2,500 and over	2,399	7.7	361	414	25.3	
Farms with sales under \$2,500	4,003	10.4	1,599	2,490	13.8	
East North Central, all farms	14,874	3.1	3,007	4,924	7.2	
Farms with sales of \$2,500 and over	10,507	3.3	1,492	2,168	13.0	
Farms with sales under \$2,500	10,720	6.3	2,612	4,457	8.6	
Ohio, all farms	6,303	6.0	232	2,598	15.0	
Farms with sales of \$2,500 and over	4,431	7.7	232	819	36.8	
Farms with sales under \$2,500	4,769	10.2	-	2,472	16.4	
Indiana, all farms	7,175	7.2	1,232	2,109	13.7	
Farms with sales of \$2,500 and over	5,078	7.6	1,045	1,253	25.4	
Farms with sales under \$2,500	5,362	16.3	658	1,735	16.6	
Illinois, all farms	6,978	6.7	629	2,599	17.8	
Farms with sales of \$2,500 and over	5,438	7.0	629	1,011	28.3	
Farms with sales under \$2,500	4,179	16.2	-	2,448	22.2	
Michigan, all farms	6,431	8.6	2,645	1,664	18.1	
Farms with sales of \$2,500 and over	3,688	8.7	778	765	30.8	
Farms with sales under \$2,500	5,168	15.8	2,528	1,500	22.3	
Wisconsin, all farms	6,323	6.1	280	1,876	16.1	
Farms with sales of \$2,500 and over	4,670	6.5	280	922	27.0	
Farms with sales under \$2,500	4,386	13.9	-	1,580	19.2	
West North Central, all farms	12,065	2.2	2,086	4,634	7.0	
Farms with sales of \$2,500 and over	10,096	2.3	2,043	2,719	9.9	
Farms with sales under \$2,500	6,831	6.2	434	3,777	9.7	
Minnesota, all farms	5,176	5.3	1,440	2,294	14.1	
Farms with sales of \$2,500 and over	3,962	5.5	1,440	1,195	21.1	
Farms with sales under \$2,500	3,603	14.4	-	2,039	19.2	
Iowa, all farms	6,347	4.8	789	1,982	17.9	
Farms with sales of \$2,500 and over	5,529	4.7	789	1,457	22.6	
Farms with sales under \$2,500	2,772	20.5	-	1,285	27.7	
Missouri, all farms	6,205	5.4	1,084	2,713	13.8	
Farms with sales of \$2,500 and over	4,839	6.6	998	1,034	25.0	
Farms with sales under \$2,500	4,280	10.3	434	2,501	16.1	
North Dakota, all farms	2,041	5.5	362	505	23.6	
Farms with sales of \$2,500 and over	1,877	5.6	362	358	27.8	
Farms with sales under \$2,500	849	23.0	-	357	42.0	
South Dakota, all farms	1,983	5.4	242	693	30.1	
Farms with sales of \$2,500 and over	1,900	5.9	242	636	38.5	
Farms with sales under \$2,500	870	20.3	-	285	43.6	
Nebraska, all farms	3,781	6.4	446	1,348	21.2	
Farms with sales of \$2,500 and over	3,431	6.4	446	1,155	25.2	
Farms with sales under \$2,500	1,378	23.4	-	735	41.2	
Kansas, all farms	4,194	6.0	302	1,539	17.9	
Farms with sales of \$2,500 and over	3,653	6.7	302	950	25.7	
Farms with sales under \$2,500	2,075	12.9	-	1,206	24.5	
South Atlantic, all farms	13,460	3.7	2,213	5,400	6.2	
Farms with sales of \$2,500 and over	6,757	4.1	1,140	1,690	12.0	
Farms with sales under \$2,500	11,311	5.7	1,898	5,137	7.1	
Maryland and Delaware, all farms	1,329	6.9	806	544	14.8	
Farms with sales of \$2,500 and over	1,109	8.2	295	206	16.9	
Farms with sales under \$2,500	821	14.0	750	505	20.5	
Virginia, all farms	4,832	7.9	309	3,095	17.8	
Farms with sales of \$2,500 and over	2,646	10.3	296	918	37.6	
Farms with sales under \$2,500	4,331	12.1	92	2,984	19.9	
West Virginia, all farms	2,980	10.3	366	1,530	13.7	
Farms with sales of \$2,500 and over	600	14.7	274	85	37.8	
Farms with sales under \$2,500	2,956	11.9	256	1,529	13.9	
North Carolina, all farms	10,325	7.7	1,830	2,993	11.6	
Farms with sales of \$2,500 and over	4,578	7.2	713	1,198	20.7	
Farms with sales under \$2,500	8,813	12.4	1,686	2,715	13.6	
South Carolina, all farms	3,380	8.3	388	1,425	15.4	
Farms with sales of \$2,500 and over	1,456	9.8	166	407	38.9	
Farms with sales under \$2,500	3,004	11.7	352	1,373	16.8	

See footnotes at end of table.

Evaluation of Coverage

1969 Census of Agriculture
Regions and Selected States

Table 11. Sampling Reliability of Estimates for Number of Farms by Components of Coverage and Value of Products Sold—Continued

	Sampling error of estimates				
	Estimated total farms		Number overcounted in census ¹	Missed in census	
	Number	Percent		Number	Percent
Georgia, all farms	4,569	9.0	674	1,766	16.2
Farms with sales of \$2,500 and over	3,224	10.9	674	551	24.5
Farms with sales under \$2,500	2,951	14.0	-	1,687	19.6
Florida, all farms	2,873	10.5	248	1,685	20.0
Farms with sales of \$2,500 and over	1,896	15.2	248	242	21.2
Farms with sales under \$2,500	2,090	14.0	-	1,670	22.9
East South Central, all farms	11,757	3.3	1,731	5,522	5.9
Farms with sales of \$2,500 and over	5,885	4.7	1,088	1,804	18.5
Farms with sales under \$2,500	10,249	4.4	1,302	5,192	6.2
Kentucky, all farms	5,905	5.9	792	2,413	13.2
Farms with sales of \$2,500 and over	3,596	7.4	597	1,375	31.6
Farms with sales under \$2,500	4,764	9.1	533	2,019	14.6
Tennessee, all farms	6,991	6.0	1,519	3,445	10.3
Farms with sales of \$2,500 and over	3,384	9.7	880	769	32.1
Farms with sales under \$2,500	6,187	7.6	1,183	3,389	10.9
Alabama, all farms	4,620	7.5	-	2,584	13.6
Farms with sales of \$2,500 and over	2,116	10.7	-	741	46.9
Farms with sales under \$2,500	4,061	9.7	-	2,373	13.6
Mississippi, all farms	5,757	7.2	253	2,473	10.8
Farms with sales of \$2,500 and over	2,401	11.6	233	473	32.9
Farms with sales under \$2,500	5,252	8.8	101	2,401	11.2
West South Central, all farms	11,720	3.7	1,873	5,749	7.9
Farms with sales of \$2,500 and over	8,091	5.2	1,159	3,188	22.6
Farms with sales under \$2,500	8,463	5.2	1,475	4,931	8.4
Arkansas, all farms	4,204	7.4	1,419	1,640	12.0
Farms with sales of \$2,500 and over	2,354	9.8	367	503	34.0
Farms with sales under \$2,500	3,385	10.2	1,372	1,572	12.9
Louisiana, all farms	3,976	8.5	371	2,069	13.1
Farms with sales of \$2,500 and over	1,965	12.9	333	640	25.4
Farms with sales under \$2,500	3,461	11.0	164	1,978	14.9
Oklahoma, all farms	6,523	9.7	747	2,163	15.3
Farms with sales of \$2,500 and over	5,715	14.3	-	791	32.8
Farms with sales under \$2,500	3,157	11.6	747	1,981	16.9
Texas, all farms	7,831	5.3	895	4,626	15.9
Farms with sales of \$2,500 and over	4,838	6.2	735	2,979	38.8
Farms with sales under \$2,500	6,182	8.7	515	3,742	17.5
Mountain, all farms ³	5,973	5.2	911	1,816	9.2
Farms with sales of \$2,500 and over	4,425	5.4	911	877	12.6
Farms with sales under \$2,500	3,604	11.1	-	1,560	12.1
Pacific, all farms ⁴	7,466	6.4	369	4,359	14.4
Farms with sales of \$2,500 and over	4,772	6.6	310	1,680	25.9
Farms with sales under \$2,500	4,122	9.0	184	3,347	14.1
Washington, all farms	6,475	14.5	147	4,125	27.1
Farms with sales of \$2,500 and over	3,983	16.4	147	1,587	61.9
Farms with sales under \$2,500	3,564	17.4	-	3,104	24.5
Oregon, all farms	1,996	8.3	194	912	15.0
Farms with sales of \$2,500 and over	1,471	9.8	102	332	28.1
Farms with sales under \$2,500	1,289	14.0	167	841	17.2
California, all farms	3,135	6.5	277	1,073	11.9
Farms with sales of \$2,500 and over	2,180	6.7	254	439	16.0
Farms with sales under \$2,500	1,620	10.2	78	930	14.9

¹Variance of the overcount component of coverage is based upon very few cases and the coefficient of variation (percent) ranges from 30 to 100 percent.

²Data not individually reported for the following States: Maine, New Hampshire, Vermont, Massachusetts, Rhode Island, and Connecticut.

³Data not individually reported for the following States: Montana, Idaho, Wyoming, Colorado, New Mexico, Arizona, Utah and Nevada.

⁴Does not include data for Alaska and Hawaii.

APPENDIX

EXHIBIT

A. Coverage Check Processing Procedures	A-1
B. ZIP Code Reference	A-2
C. Form 69-A90 Evaluation of the 1969 Census of Agriculture	A-3
D. Coverage Classification Codes	A-7

EXHIBIT A. Coverage Check Processing Procedures

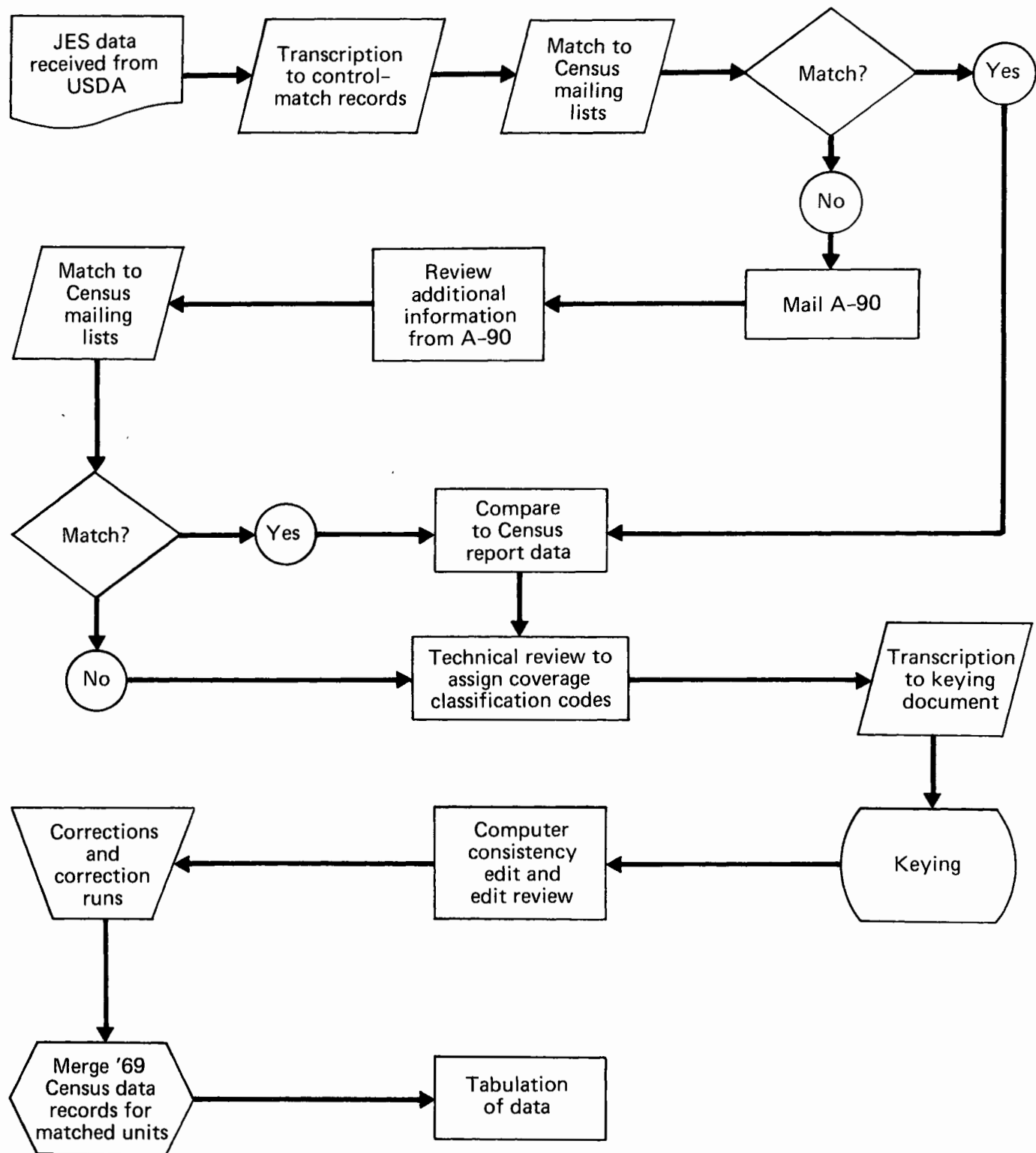


EXHIBIT B. ZIP Code Reference

<u>ZIP Code</u>	<u>State and County Code *</u>	<u>County Name</u>
50659	41003	MOWER
	42005	HOWARD
	42006	CHICKASAW
	42009	BREMER
	42012	FAYETTE
	42013	WINNESHIEK
	42024	LEE
	42037	GRUNDY
	74002	HIDALGO
50660	42004	MITCHELL
	42008	BUTLER
	42010	BLACK HAWK
	42011	BUCHANAN
	42037	GRUNDY
50661	42006	CHICKASAW
	42035	BENTON
50662	42009	BREMER
	42011	BUCHANAN
	42012	FAYETTE
	42041	DALLAS

* State and county code of all counties in which the ZIP code appears

EXHIBIT C.

FORM 69-A90
(8-8-70)

U.S. DEPARTMENT OF COMMERCE
BUREAU OF THE CENSUS

**EVALUATION OF THE
1969 CENSUS OF AGRICULTURE**

Budget Bureau No. 41-S70046
Approval Expires June 30, 1971

Please mention the Census File Number (the number in the upper left corner of the address label) if you write to us about this report.

Response to this inquiry is required by law (Title 13, U.S. Code). By the same law your report to the Census Bureau is confidential. It may be seen only by sworn Census employees and may be used only for statistical purposes.

Return form in the enclosed postage-paid envelope to:

Agriculture Division
Bureau of the Census
Washington, D.C. 20233

(Please correct any error in name and address including ZIP code)

CENSUS USE ONLY	010	011	012	013
-----------------	-----	-----	-----	-----

Section 1 - ACREAGE and OWNERSHIP as of December 31, 1969

		Acres
1. Land owned on December 31, 1969	None <input type="checkbox"/>	014
2. Land rented or leased from others on December 31, 1969 - Include land worked on shares or share-cropped for others; leased Federal, State, and railroad land; and land used rent free. (Do not include land used on a per-head basis under a grazing permit.)	None <input type="checkbox"/>	015
3. Land rented or leased to others on December 31, 1969 - Include land subleased and land worked on shares or share-cropped by others.	None <input type="checkbox"/>	016
4. Please ADD acres owned (item 1) to acres rented (item 2), then SUBTRACT acres rented to others (item 3), and enter your answer in this space. →		017
5. How many acres were diverted under soil bank or other Federal programs such as those for feed grains, wheat, etc., in 1969?	None <input type="checkbox"/>	018 _____ Acres
6. How many persons rented or leased land from you in 1969? - Include those working land on shares.	None <input type="checkbox"/>	019 _____ Persons
7. How many acres of the land you rented or leased from others (item 2) did you subrent or sublease to others? - Include land rented or leased by you which was worked on shares by others.	None <input type="checkbox"/>	020 _____ Acres

Did the number of acres you operated change at any time during 1969?

Yes - Complete the following

	Type of change	No	Yes	If yes, give number of acres and date of change	
				Acres	Date (Mo./Yr.)
<input type="checkbox"/> No - Go to Section 2	a. Bought additional land			021	022
	b. Sold land			023	024
	c. Rented land from others - Include rent free land			025	026
	d. Rented land to others - Include rent free land			027	028
	e. Other changes - Specify			029	030

Section 2 - LOCATION of agricultural activity in 1969

1. In what county and State were your principal agricultural operations located?

County _____ State _____

2. Did you have agricultural operations in any other county or counties?

Yes - Complete the following

	Give names of counties, States, and acres located in each.		
	County	State	Acres
<input type="checkbox"/> No - Skip to Section 3			031
			032
			033

Please read ... All of your 1969 agricultural operations, no matter where located, should be included in this report.

Section 3 — OPERATIONAL STATUS — Your farm may have been included in the agriculture census under a different name or address. The information requested in this section will be used to check the completeness of the census.

1. In the past two years have you received mail at any address other than the one listed in the address label on page 1 of this form? — *Include different ways mail can be addressed to you at your present location.*

Yes — Enter other address → _____

 No

Route, box No., or street		
City	State	ZIP code

2. Do you have a Social Security number?

Yes — Enter number → _____

 No

Social Security number

040	□	□	□	□	□	□	□	□	□	□	□
-----	---	---	---	---	---	---	---	---	---	---	---

3. Do you have an Employer Identification (EI) number?

Yes — Enter number → _____

 No

EI number

041	□	□	□	□	□	□	□	□	□	□	□
-----	---	---	---	---	---	---	---	---	---	---	---

4. Mark (X) the box which best describes the operator of this farm.

<input type="checkbox"/> An individual } Go to item 5 <input type="checkbox"/> A partnership } <input type="checkbox"/> Corporation, less than 10 stockholders } <input type="checkbox"/> Corporation, 10 stockholders or more } Skip to item 6	<input type="checkbox"/> Other — Specify type of organization then skip to item 6
--	---

5. Since January 1, 1968, have there been any partners, landlords, tenants, or sharecroppers associated with this place or has there been any other person who received any share of crops, livestock, or other production in cash or kind from the operation of this place?

No — Skip to item 7 Yes — Who are they? — Fill table below

ANSWER IF AN INDIVIDUAL OR A PARTNERSHIP	Name (a)	Address (b)	What is this person's family relationship to the operator of this farm? (For example, parent, son, uncle, or not related.) (c)	Enter description of person, e.g., partner, landlord, tenant, sharecropper, other — Specify (d)	What year did this person become associated with this farm? (e)
		Route, box No., or street			
		City, State, ZIP code			
		Route, box No., or street			
		City, State, ZIP code			
		Route, box No., or street			
		City, State, ZIP code			

After completing above table, skip to item 7

ANSWER IF A CORPORATION OR OTHER TYPE OF ORGANIZATION	6. Is the name and address of the corporation or other organization that operates this place the same as that shown in the address label? <input type="checkbox"/> Yes — Skip to item 7 <input type="checkbox"/> No — What is the correct name and address of the corporation that operates this place?	Name _____ Route, box No., or street _____ City, State, ZIP code _____
---	---	--

NOTE: Answer questions 7 through 12 for the person in charge of the operation. If a corporation answer for the manager. If a partnership answer for the senior partner.

7. Year you began to operate any part of this place . . . _____ Year

8. If you began operating this place on or after January 1, 1968, who operated this place before you?

Name		
Route, box No., or street		
City	State	ZIP code

9. Does the operator — the person in charge of the farm or ranch operations — live on this place? . . . 043 1 Yes 2 No

10. Operator's age 044 _____ Years old

11. Race — Mark (X) the appropriate box 045 1 White 2 Negro or Black 3 Indian (Amer.) 4 Other

12. Number of days operator worked off this place in 1969 — Include work at a nonfarm job, business or profession, or on someone else's farm. (Do not include exchange work.) Mark (X) the appropriate box. 046

1 None 2 1-49 days 3 50-99 days 4 100-199 days 5 200 days or more

EXHIBIT C.—Continued

Section 4 — CROPS harvested for any purpose from land you operated in 1969 — Report all crops harvested. Include crops grown under contract. Be sure to include landlord's share, if you rent cropland from others.

	Acres harvested	Quantity harvested
1. Field corn for grain — Report quantity harvested on a shelled basis and in one unit only — either bushels or hundredweight.	050	051
	<input type="checkbox"/> None	052 or Bushels Hundred-weight
2. Field corn for silage, cut for green or dry fodder, hogged or grazed (Do not include acres reported in item 1.)	053	054 Tons
3. Sorghums for grain or seed — Report quantity harvested in one unit only — either bushels or pounds	055	056
	<input type="checkbox"/> None	057 or Bushels Pounds
4. Sorghums for silage, cut for dry forage or hay, or hogged or grazed (Do not include here acres already reported in item 3.)	058	059 Tons
5. Wheat for grain	060	061 Bushels
6. Other small grains for grain — oats, barley, rye, rice, etc.	062	063 Bushels
7. Soybeans for beans	064	065 Bushels
8. Hay — all kinds except sorghum hay (if two or more cuttings were made from the same land, REPORT ACRES ONLY ONCE, but report total tons of all cuttings.)	066	067 Tons, dry
9. Cotton	068	069 Bales
10. Peanuts for nuts	070	071 Pounds
NOTE: For items 11 through 16, report whole acres and tenths		
11. Tobacco — all types	072	073 Pounds
12. Irish potatoes and sweetpotatoes	074	075 Hundred-weight
13. Vegetables, sweet corn, or melons for sale	076	077 Dollar value sold
14. Berries for sale	078	079 Pounds
15. Land in bearing and nonbearing fruit orchards, citrus or other groves, vineyards, and nut trees of all ages — Include land on which the fruit crop failed. (Do not include abandoned plantings.)	080	081 Pounds
16. All other crops — Include field seeds, sugar crops, garden nursery and greenhouse products, sod, etc.	082	083 Square feet

Section 5 — LIVESTOCK and POULTRY — Be sure to report all livestock and poultry on this place on December 31, 1969, no matter who owned them. — Include as sold all livestock and poultry fed on a contract or custom basis and taken from this place in 1969.

	Number on this place December 31, 1969	Number sold in 1969
1. Cattle and calves of all ages	085	086
a. Cows — Include dry cows and heifers that had calved.	087	
(1) Of the total cows reported in item 1a, how many were kept for milk production? — Include dry milk cows and milk heifers that had calved.	088	
2. Hogs and pigs of all ages	089	090
a. Of the total sold, how many were sold as feeder pigs for further feeding?	091	
3. Sheep and lambs of all ages	092	093
4. Horses and ponies of all ages	094	095
5. Hens and pullets of laying age (Exclude started pullets being raised for sale.)	096	097
6. Any other chickens 3 months old or older (roosters, capons, started pullets)	098	099
7. Broilers and other meat-type chickens less than 3 months old	100	101
8. Other livestock and poultry — goats, mules, fur-bearing animals, turkeys, ducks, geese, hives of bees, etc.	102	103
What kind? _____		
9. Litters of pigs farrowed on this place between —		Number of litters
a. December 1, 1968, and May 31, 1969		104
b. June 1, 1969, and November 30, 1969.		105

Section 6 — CONTRACTS

1. At any time during 1969, did you have any CONTRACT, AGREEMENT, or UNDERSTANDING with a dealer, processor, or cooperative to PRODUCE any CROPS, LIVESTOCK or LIVESTOCK PRODUCTS, or POULTRY or POULTRY PRODUCTS?

Yes — Fill table below No — Go to Section 7

Name of crop, livestock, poultry, or product covered by contract, agreement, or understanding	Name and address of person or business with whom contract was made		
		Name	
	Route, box No., or street		
	City	State	ZIP code
	Name		
	Route, box No., or street		
	City	State	ZIP code

Section 7 — MARKET VALUE, before taxes and expenses, of agricultural products SOLD in 1969 — crops, livestock, livestock products, etc. — Include market value of landlord's and contractor's share.

	None	CENTS NOT REQUIRED	
		Dollars	Cents
1. Livestock, poultry, and their products sold	<input type="checkbox"/>	200	
		\$	
2. Crops including nursery products and hay sold	<input type="checkbox"/>	201	
		\$	
3. Forest products sold — firewood, fuelwood, fenceposts, sawlogs, Christmas trees, gum for naval stores, standing timber or trees, maple products, etc. . .	<input type="checkbox"/>	202	
		\$	
4. Total market value of all agricultural products sold, before taxes and expenses — Add dollars for items 1 through 3 and enter total here —————>		203	
		\$	

Section 8 — FARM-RELATED INCOME received in 1969 — Report amount received before taxes and expenses

	None	CENTS NOT REQUIRED	
		Dollars	Cents
1. Customwork and other agricultural services provided for others — plowing, planting, spraying, harvesting, preparation of products for market, etc.	<input type="checkbox"/>	204	
		\$	
2. Recreational services — providing hunting, fishing, picnicking, camping, boarding, lodging, or other recreational facilities on this place	<input type="checkbox"/>	205	
		\$	
3. Payments you received for participation in government farm programs (Do not include redeemable loans.)	<input type="checkbox"/>	206	
		\$	

Section 9 — CENSUS STATUS — In January 1970, U.S. Census of Agriculture questionnaires were sent to farm operators throughout the United States.

1. Did you receive one of these forms?

- No — Skip to Section 10
- Yes — Were the name and address on that form the same as shown in the address label on this form?
 - Yes — Go to Section 10
 - No — Enter address

Name		
Route, box No., or street		
City	State	ZIP code

Section 10 — SIGNATURE of person filling this report — Please check your answers, then sign below.

Name _____ Date _____

Telephone	
207	Area code Number

Remarks — Attach separate sheet, if needed.

EXHIBIT D. Coverage Classification Codes

Description	Code
1. In-scope Coverage Sample farm matches single in-scope Census A1 or A2	
1.1 Acres in Coverage and Census identical	100
1.2 Acres in Coverage and Census essentially equal	110
1.3 Acres in Coverage and Census different*	
1.3.1 Census correct	121
1.3.2 Coverage correct	122
1.3.3 Neither correct	123
1.3.4 Both correct (difference due to enumeration date, etc.)	124
2. In-scope Coverage farm matches single Nonsample TOP 5; A-90 in-scope	130
3. Coverage nonfarm matches in-scope Census A1 or A2 (Census correct)	140
4. Coverage nonfarm dwelling matches in-scope Census A1 or A2 (Census correct)	150
5. In-scope Coverage farm matches two or more pieces or duplicates of in-scope A1's or A2's	200
6. Coverage nonfarm (nonfarm status correct) matches in-scope Census A1 or A2	210
7. Coverage nonfarm dwelling (nonfarm status correct) matches in-scope Census A1 or A2	220

*Difference is defined as follows:

Coverage acres	Census A1 or A2 acre difference allowed
Less than 10 acres	5 acres
10 to 99 acres	50 percent of Coverage acres
100 acres and over	50 acres

EXHIBIT D. Coverage Classification Codes – Continued

Description	Code
8. In-scope Coverage matches in-scope Census A1 or A2 and Nonsample TOP 5	230
9. In-scope Coverage farm matches two or more Census Nonsample TOP 5 or 9	240
10. Out-of-scope Coverage matches in-scope Census A1 or A2	250
11. Coverage nonfarm or nonfarm dwelling matches Census Nonsample TOP 5	260
12. Coverage nonfarm or nonfarm dwelling matches one or more Census Nonsample TOP 5 and/or one or more in-scope A1's or A2's	270
13. In-scope Coverage farm or nonfarm unmatched to Census file	300
14. In-scope Coverage farm matches ASCS not included in Census	310
15. In-scope Coverage farm matches out-of-scope Census A1 or A2	320
16. In-scope Coverage farm matches Census A1 or A2 nonrespondent	400
17. Coverage nonfarm matches Census A1 or A2 nonrespondent	410
18. Coverage nonfarm dwelling matches Census A1 or A2 nonrespondent	420
19. In-scope Coverage farm matches one or more Census in-scope or out-of-scope A1's or A2's and one or more A1 or A2 nonrespondents	430
20. In-scope Coverage farm matches Census Nonsample TOP 5 and A1 or A2 nonrespondent	440
21. In-scope Coverage farm matches two or more Census A1 or A2 nonrespondents	450
22. Out-of-scope Coverage farm matches Census Nonsample TOP 5	500
23. Out-of-scope Coverage farm matches ASCS not included in Census	510
24. Out-of-scope Coverage farm unmatched to Census file	520
25. Out-of-scope Coverage farm matches Census out-of-scope A1 or A2	530
26. Out-of-scope farm matches Census A1 or A2 nonrespondent	540
27. Coverage nonfarm or nonfarm dwelling matched to ASCS not in Census, unmatched, or matched to Census out-of-scope A1 or A2	000