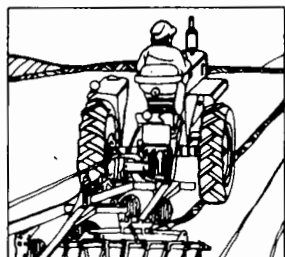
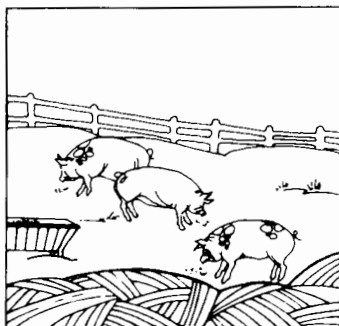
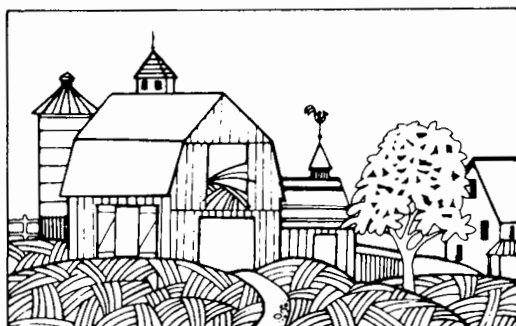
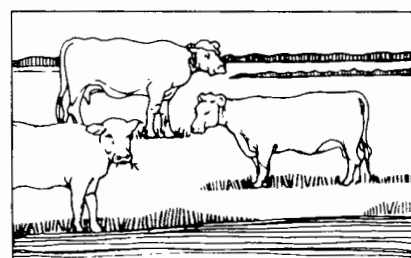
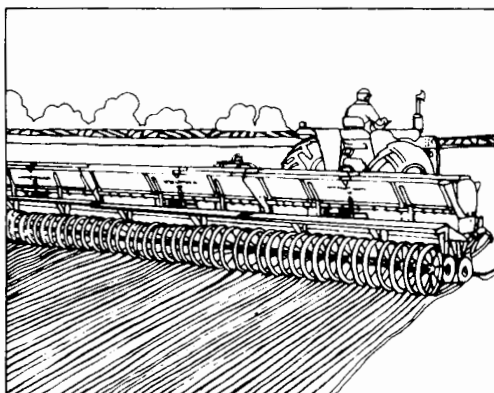
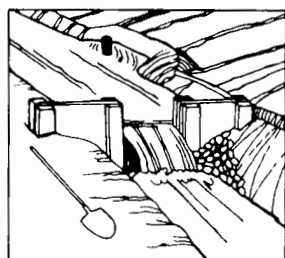
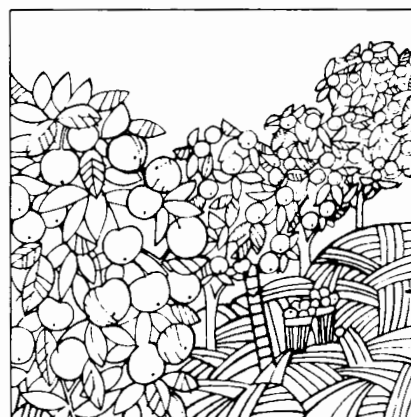
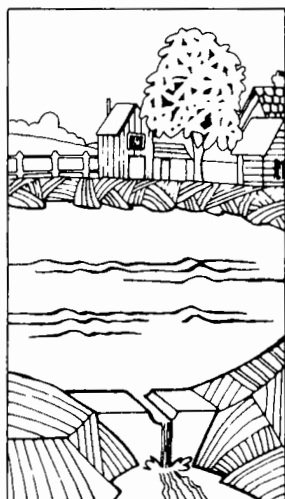


part 55
TRUST TERRITORY

**VOLUME I
AREA REPORTS**



**1969
CENSUS OF
AGRICULTURE**



Issued September 1972



U. S. DEPARTMENT OF COMMERCE Peter G. Peterson, Secretary
James T. Lynn, Under Secretary
Harold C. Passer, Assistant Secretary for Economic Affairs
and Administrator,
Social and Economic Statistics Administration
BUREAU OF THE CENSUS George Hay Brown, Director



BUREAU OF THE CENSUS

George Hay Brown, Director

Robert L. Hagan, Deputy Director

Walter F. Ryan, Associate Director for Economic Fields

James W. Turbitt, Associate Director for
Economic Operations

AGRICULTURE DIVISION

J. Thomas Breen, Chief

REPORTS OF THE 1969 CENSUS OF AGRICULTURE

Individual County Reports

These eight-page reports are issued for each county and State. They also appear as section 2 of volume 1 for the State to which they pertain. The tables contain totals for farms, land, production, expenses, income and sales, machinery and equipment, livestock, crops, and nursery, greenhouse, and forest products.

Volume I. Area Reports

A separate report is published for each State, American Samoa, Guam, Puerto Rico, Trust Territory, and the Virgin Islands. The report consists of two sections. Section 1 contains the introduction, State summary data, county summary of selected data, miscellaneous items by counties (crops or livestock appearing in relatively few counties and therefore not listed in the county tables on a nationwide basis), and an appendix giving explanations, definitions, and examples of the report forms used. Section 2 contains the detailed county reports.

Volume II. General Report

Statistics by subject will be presented, with totals for the United States, Regions, and States.

Volume III. Agricultural Services

This is a new report which will contain data relating to agricultural services.

Volume IV. Irrigation

Data will be included on drainage basins, land irrigated, crop production on irrigated land, water conveyed, users, and types of organization.

Volume V. Special Reports

Reports will be based on data obtained from supplemental surveys, such as type of farm, horticulture, and farm finance; and other subjects based on information obtained in the census.

ACKNOWLEDGMENTS—Many persons participated in the various activities of the 1969 Census of Agriculture. Primary direction of the program was performed by J. Thomas Breen, Chief, Agriculture Division, with the helpful guidance and review of Conrad Taeuber, Associate Director for Demographic Fields. Kenneth R. Norell, Assistant Chief for Special Surveys, Agriculture Division, participated in the overall planning and supervised the preparation of instructions for office processing, training materials, the development of enumeration procedures, and the technical review of statistics prior to their publication. Hector Vila, Chief of Outlying Areas Statistical Branch, made significant contributions to the planning and in the preparation of instructions and training materials for the enumeration and in the handling of technical problems in connection with office processing. Theodore G. Clemence, under the 1970 Census coordinator's staff, worked in the general planning program.

The census data were collected at the direction of the High Commissioner of the Trust Territory of the Pacific Islands, Honorable Edwards E. Johnston. The actual collection of the data was carried out by census enumerators under the supervision of Francis H. Wilmer.

The manual processing of the questionnaires was performed in Agriculture Division, Washington, D.C., and in the Census Operations Office, Jeffersonville, Indiana.

SUGGESTED CITATION

U.S. Bureau of the Census, Census of Agriculture, 1969
Volume I. Area Reports
Part 55. TRUST TERRITORY

U.S. Government Printing Office, Washington, D.C., 1972

LIBRARY OF CONGRESS CARD NO. 72-601370

For sale by the Superintendent of Documents, U.S. Government Printing Office, Washington, D.C., 20402, or any Department of Commerce field office. Price 50 cents.

Contents

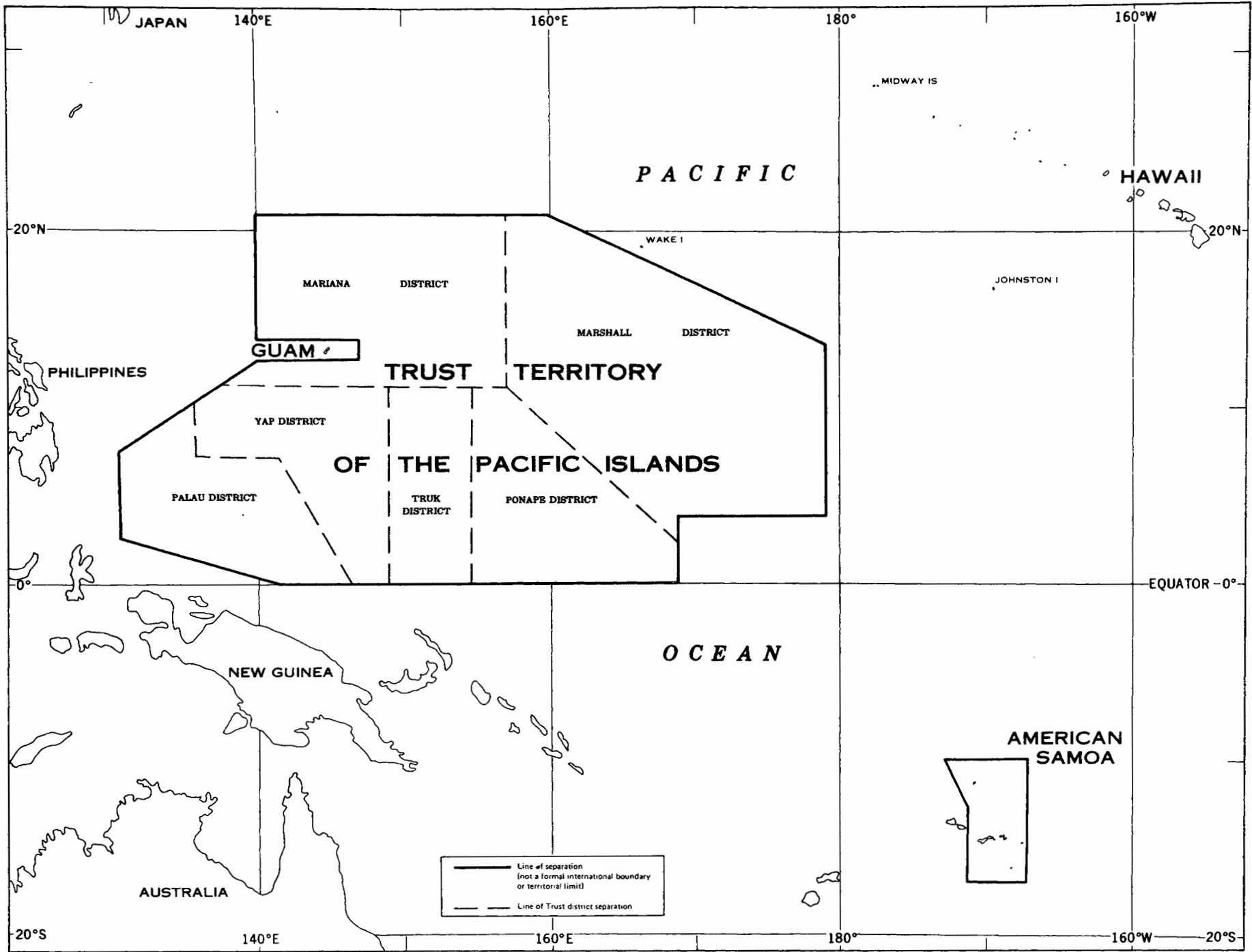
	<i>page</i>
Map.....	iv
Introduction.....	v
Section 1. Summary Data	1
Section 2. ^{Municipality} District Data	11

APPENDIXES

A. Definitions and Explanations	A-1
B. Report Form.....	B-1

TRUST TERRITORY OF THE PACIFIC ISLANDS

Districts, Municipalities, Islands, Atolls, and Places



Introduction

History of the Census

The 1970 Census of Agriculture is the first U.S. Census of Agriculture of the Trust Territory of the Pacific Islands. The 1970 Census of Agriculture for the Trust Territory was taken as part of the U.S. 1969 Census of Agriculture and enumerated in conjunction with the 1970 Population Census for the U.S. Trust Territory of the Pacific Islands.

Authority and Area Covered

The Census of Agriculture is authorized by an Act of Congress, "Title 13, United States Code—Census", codified August 31, 1954, as amended. Section 191 provides that the census data for U.S. Trust Territory of the Pacific Islands may be collected by the High Commissioner, or the highest ranking Federal official, in accordance with plans prescribed or approved by the Secretary of the U.S. Department of Commerce. The current 1970 census covers agriculture in each one of the States and in American Samoa, Guam, Puerto Rico, U.S. Trust Territory of the Pacific Islands, and the Virgin Islands.

The Agriculture Questionnaire

The questionnaire for the 1970 Census of Agriculture was prepared by the staff of the Census Bureau in cooperation with the Government of the Trust Territory. It contained a total of 54 inquiries, most of which consisted of several parts. Selection of the inquiries was based on current needs for agricultural information as well as on experience gained in earlier censuses of Guam and other similar areas. Definitions and explanations for selected items are given in appendix A. A facsimile of the 1970 questionnaire is shown in appendix B.

Training Program for Enumeration Personnel

Each supervisor, assistant supervisor, and enumerator employed for the 1970 Census of Population and Housing and the 1970 Census of Agriculture in the Trust Territory received special training for his job. All training was presented according to procedures prepared by the Bureau of the Census. It included practice interviewing, practice filling of questionnaires, and detailed discussion of the written instructions given to enumerators.

Enumeration Period

The enumeration for the census of agriculture was scheduled to begin on April 1, 1970, at the same time and in conjunction with the enumeration for the census of population and housing; however, due to a delay in the starting of the population census in the Trust Territory, most of the agriculture census forms were not completed until the end of the summer of 1970.

Dates to Which Data Relate

The 1970 census figures for land in farms, land use, fruit and nut trees, and livestock and poultry on hand represent the situation existing at the time of enumeration of each individual farm. Data for hectares and production of crops relate to the crops harvested during the crop year 1969. Data for sales of chickens and chicken eggs relate to the calendar year 1969.

The Enumeration

The schedule which enumerators used for taking the 1970 Census of Population and Housing in the Trust Territory contained a section where the enumerator was to determine if an agricultural form should also be filled out. A "yes" answer to any one of the three questions in this section meant an agriculture questionnaire must be filled out. The three questions were—

Is this house on a farm?

Were any crops or vegetables harvested from this place in 1969, or is there now a combined total of 10 or more fruit trees or plants on the place?

Does this place have any livestock or five or more poultry?

The enumerator was also instructed to ask enough questions about tracts of land on which no one lived to determine whether an agriculture questionnaire was required for the person in charge of the land. This instruction was designed to assure enumeration of all land used for agriculture.

Enumeration Districts

For purposes of enumeration, the Trust Territory was divided into Enumeration Districts, or "ED's". The ED's were clearly outlined on special maps prepared for the census. Each enumerator was required to canvas the entire area within his assigned ED.

To avoid enumeration of the same place by two or more enumerators, the Census Bureau established rules whereby each enumerator could determine whether or not he was responsible for obtaining the agriculture questionnaire for a given place. If a place was entirely within the boundaries of one ED, the enumerator for the ED was required to obtain the questionnaire, regardless of where the person in charge of the operations lived. If a place was partly in one ED and partly in another, the enumerator for the ED in which the person in charge lived was responsible for obtaining the questionnaire. In such case, he was to report on the questionnaire all the land that the person in charge operated in the Trust Territory, including the land outside his ED.

Census Definition of a Farm

The statistics presented in this report relate to places qualifying as census farms. For the 1970 Census of Agriculture in the Trust Territory, a farm was defined as any place on which any crops or vegetables were harvested or gathered during 1969, or on which there was a combined total of 10 or more fruit or nut trees or plants or on which any livestock, or five or more poultry were kept on or about the time of enumeration.

Office Processing

Each enumerator's work was examined and checked for completeness by the Agriculture Division, Bureau of the Census, in Washington, D.C. All questionnaires were individually edited and coded prior to tabulation of the data. In the editing process, questionnaires that did not represent farms, according to the census definition, were withdrawn from further processing. The remaining questionnaires were then examined for completeness and consistency. Errors in calculations and units of measure, inconsistencies, and misplaced entries were corrected. Incomplete reports were adjusted on the basis of related information on the same questionnaire or on questionnaires for nearby farms of similar type and size.

In the coding process, numerical codes were entered on all questionnaires to classify farms by size in terms of total area, by

tenure of operator, and by age of operator. After the questionnaires had been edited and coded, the information on them was transferred to tabulation sheets. Subject matter specialists of the Bureau of the Census examined the tabulations for reasonableness and consistency. As necessary, they made corrections on the basis of a further reappraisal of the original reports before approving the data for publication.

Presentation of Statistics

This report contains data as compiled from the questionnaires used for the 1970 Census of Agriculture in the Trust Territory. Totals are given for each District and for the Trust Territory as a whole.

Abbreviations and Symbols

The following abbreviations and symbols may occur in the tables:

- Zero
- X Not applicable
- NA Not available
- D Data withheld to avoid disclosing figures for an individual farm or farm operation
- Z Reported in small fractions.

Section 1

SUMMARY DATA

CONTENTS

1-14 Municipality
15, 16, 17 Summary

	<i>page</i>
TABLE 1. Farms, Land in Farms, by Land Use: 1970 -----	2
2. Summary by Size of Farm: 1970 -----	2
3. Summary by Age of Operator: 1970 -----	5
4. Summary by Tenure of Operator: 1970 -----	7
5. Vegetables and Field Crops: 1970 -----	10
6. Fruits, Nuts, and Tree Crops: 1970 -----	10
7. Livestock and Poultry: 1970 -----	10

Table 2. Summary by Size of Farm: 1970—Continued
(Crops harvested, poultry and poultry products sales, workpower, and off-farm work data are for the year 1969)

Land Use		Total	Under 1 hectare	1 to 2 hectares	3 to 4 hectares	5 to 7 hectares	8 to 9 hectares	10 to 19 hectares	20 to 39 hectares	40 to 49 hectares	50 hectares and over	
Cropland	farms..	2,782 ²⁸⁴	267	946	1,062	670	191	298	171	38	139	
	hectares..	27,267 ¹²⁹⁶	133	1,317	3,015	3,153	1,242	2,883	3,355	1,128	11,031	
In crops	farms..	2,706 ²⁵⁵	260	906	1,043	563	188	297	171	38	139	
	hectares..	17,438 ¹⁴⁰⁴	108	1,087	2,402	2,309	879	1,968	1,979	747	5,959	
Other cropland	farms..	1,869 ¹¹²	127	348	447	346	110	192	143	31	125	
	hectares..	9,819 ¹⁸⁵³	25	230	613	844	353	915	1,376	381	5,072	
Pastureland	farms..	751 ⁸⁹	48	85	163	133	60	98	68	21	75	
	hectares..	6,941 ⁸⁴⁸	10	49	176	237	150	465	632	356	4,856	
Other land	farms..	1,742 ⁹⁴	91	427	413	281	110	163	123	26	108	
	hectares..	5,449 ⁹⁴¹	25	264	442	480	231	502	713	174	2,618	
Livestock on Farms												
Carabaos	farms..	84 ¹	3	7	14	14	12	10	15	2	7	
	number..	197 ¹	8	8	27	26	21	16	23	6	8	
Cattle and calves	farms..	220 ¹⁸²	18	35	30	56	15	30	12	6	18	
	number..	6,231 ⁴⁹⁹⁶	46	125	123	201	100	306	199	144	3,988	
Milk cows	farms..	27 ²²	1	4	3	5	5	3	1	3	2	
	number..	78 ⁶⁶	4	8	11	25	9	4	1	6	10	
Other cattle and calves	farms..	222 ¹⁴⁹	17	34	39	55	14	29	12	6	17	
	number..	5,156 ⁴⁹³⁰	42	117	112	176	91	304	198	138	3,978	
Hogs and pigs	farms..	2,189 ¹²⁰	120	506	560	374	189	210	135	27	112	
	number..	12,636 ³⁴⁴⁷	232	1,783	2,223	1,665	686	1,030	860	220	2,872	
Goats and kids	farms..	105 ⁵⁶	13	33	23	46	16	13	24	3	22	
	number..	1,132 ²⁷⁷	77	181	215	201	96	55	89	15	209	
Horses, mules, and colts	farms..	13 ³	1	3	3	4	2	1	1	2	2	
	number..	60 ¹⁶	4	12	8	8	11	1	1	14		
Poultry on Farms												
Chickens	farms..	2,307 ²⁰⁴	152	572	627	411	124	201	128	24	102	
	number..	40,742 ³⁴³³	3,614	11,606	8,301	6,021	1,715	2,987	2,466	1,165	2,203	
Other poultry	farms..	208 ¹³	7	20	56	34	25	20	20	7	19	
	number..	1,015 ⁸⁹	21	87	206	195	172	73	66	27	78	
Poultry and Poultry Products Sold												
Chickens	farms..	200 ¹⁹	8	72	42	25	12	12	8	1	9	
	number..	3,072 ²	35	559	797	687	117	300	337	30	126	
Chicken eggs	farms..	70 ²	2	23	16	19	3	5	7	2	2	
	dozens..	15,767 ⁶²⁰	168	7,304	2,562	5,180	14	25	436	70		
Source and Ownership of Workpower												
Operators reporting		3,647	235	901	1,043	648	188	291	166	38	137	
Mechanical power used		125	12	22	8	42	6	17	5	6	7	
Owned by—												
Operator		18	—	2	3	5	2	2	—	1	3	
Operator and another		11	8	3	—	—	—	—	—	—	—	
Landlord		—	—	—	—	—	—	—	—	—	—	
Private contractor		13	1	—	—	8	1	3	—	—	—	
Government agency		101	4	18	5	38	5	15	5	5	6	
Animal power used		6	1	1	—	3	—	1	—	—	—	
Owned by—												
Operator		5	1	1	—	2	—	1	—	—	—	
Operator and another		1	—	—	—	1	—	—	—	—	—	
Landlord		—	—	—	—	—	—	—	—	—	—	
Private contractor		—	—	—	—	—	—	—	—	—	—	
Government agency		—	—	—	—	—	—	—	—	—	—	
No mechanical or animal power used		3,516	222	878	1,035	603	182	273	161	32	130	
Crops Harvested												
Vegetables and field crops:												
	Taro	farms..	2,267 ¹¹²	182	662	618	369	91	161	94	17	73
	hectares..	1,419 ⁴⁰	31	299	398	236	80	174	78	20	111	
Yams	pounds..	4,020,958 ^{101,524}	806,144	1,140,350	631,703	213,515	444,234	225,415	131,955	335,118		
	farms..	1,400 ³	48	212	465	298	96	170	107	18	85	
	hectares..	918 ²⁶⁸	2	36	153	150	70	177	136	25	169	
Sweet potatoes	pounds..	2,199,650	6,710	84,787	325,024	339,874	161,781	409,035	401,088	53,478	417,875	
	farms..	757	84	239	174	103	22	48	36	14	37	
	hectares..	112	3	21	17	17	7	13	8	8	19	
Sugarcane	pounds..	313,810	12,955	60,459	43,960	51,889	16,740	25,488	18,525	29,135	54,768	
	farms..	707	60	206	193	98	29	39	32	10	40	
	hectares..	3	(2)	1	1	1	(2)	(2)	(2)	(2)	(2)	
	pounds..	74,010	2,933	16,929	21,127	14,460	4,633	5,445	3,940	657	4,795	

56,013

76013

Table 3. Summary by Age of Operator: 1970
 (Crops harvested, poultry and poultry products sales, workpower, and off-farm work data are for the year 1969)

	Total all farms	Total operators reporting	Under 25 years	25 to 34 years	35 to 44 years	45 to 54 years	55 to 64 years	65 years and over
Farms and Land in Farms								
Farms number . .	3,857	3,034	26	183	621	963	830	411
Percent distribution	100	78.7	0.7	4.7	16.1	25.0	21.6	10.6
Land in farms hectares . .	39,647	31,056	180	868	6,187	8,463	11,450	3,908
Percent distribution	100	78.3	0.5	2.2	15.6	21.3	28.9	9.8
Average size of farm hectares . .	10.3	10.2	6.9	4.7	10.0	8.8	13.8	9.5
Farms by Tenure of Farm Operator								
Farms number . .	3,857	3,034	26	183	621	963	830	411
. hectares . .	39,647	31,056	180	868	6,187	8,463	11,450	3,908
Owners number . .	3,804	2,984	26	175	605	952	817	409
. hectares . .	36,157	27,766	180	851	6,142	8,379	8,318	3,896
Full owners number . .	3,502	2,716	22	155	554	867	730	388
. hectares . .	32,078	24,650	173	712	5,744	7,515	7,132	3,374
Part owners number . .	302	268	4	20	51	85	87	21
. hectares . .	4,079	3,116	7	139	398	864	1,186	522
Tenants number . .	53	50	-	8	16	11	13	2
. hectares . .	3,490	3,290	-	17	45	84	3,132	12
Ownership								
Farms number . .	3,857	3,034	26	183	621	963	830	411
. hectares . .	39,647	31,056	180	868	6,187	8,463	11,450	3,908
Land owned farms . .	3,804	2,984	26	175	605	952	817	409
. hectares . .	34,345	26,249	178	775	5,976	7,835	7,765	3,720
Land rented from others farms . .	355	318	4	28	67	96	100	23
. hectares . .	5,415	4,870	2	93	234	637	3,705	199
Land rented to others farms . .	27	18	-	1	2	5	7	3
. hectares . .	113	63	-	(2)	23	9	20	11
Land in Agriculture								
Land in place:								
1 tract farms . .	2,689	2,010	15	124	432	621	543	275
2 tracts farms . .	681	603	7	33	122	194	166	81
3 tracts and over farms . .	380	345	2	21	52	120	101	49
Operators not reporting farms . .	107	76	2	5	15	28	20	6
Producing mainly for--								
Home consumption farms . .	3,545	2,814	24	176	582	887	762	383
Sale farms . .	247	179	1	5	33	57	59	24
Crop holding farms . .	154	108	1	1	21	34	38	13
Livestock and/or poultry holding farms . .	18	18	-	1	4	6	4	3
Mixed holding farms . .	70	48	-	3	6	15	17	7
Other farms . .	5	5	-	-	2	2	-	1
Operators not reporting farms . .	65	41	1	2	6	19	9	4
Land Use								
Cropland farms . .	3,782	2,982	24	173	606	945	827	407
. hectares . .	27,257	19,835	166	566	4,095	6,085	6,125	2,798
In crops farms . .	3,705	2,955	24	170	599	938	820	404
. hectares . .	17,438	11,795	154	371	2,306	3,551	3,774	1,639
Other cropland farms . .	1,869	1,525	8	91	321	478	417	210
. hectares . .	9,819	8,040	12	195	1,789	2,534	2,351	1,159
Pastureland farms . .	751	720	3	48	141	251	183	94
. hectares . .	6,941	6,833	7	149	1,157	1,233	3,785	502
Other land farms . .	1,742	1,307	10	75	260	407	362	193
. hectares . .	5,449	4,588	7	153	935	1,145	1,540	608
Livestock on Farms								
Carabaos farms . .	84	76	-	2	16	24	22	-12
. number . .	137	125	-	2	27	35	41	20
Cattle and calves farms . .	230	228	1	19	34	89	56	29
. number . .	5,234	5,230	1	130	185	590	4,056	268
Milk cows farms . .	27	27	-	1	4	7	11	4
. number . .	78	78	-	2	7	20	19	30
Other cattle and calves farms . .	222	220	1	19	33	85	55	27
. number . .	5,156	5,152	1	128	178	570	4,037	238
Hogs and pigs farms . .	2,182	1,847	15	98	344	607	523	260
. number . .	12,630	11,642	77	460	1,625	2,861	5,426	1,193
Goats and kids farms . .	195	155	1	10	34	58	34	18
. number . .	1,132	918	1	68	238	326	228	57
Horses, mules, and colts farms . .	13	12	-	-	1	7	3	1
. number . .	50	49	-	-	5	23	19	2

Table 3. Summary by Age of Operator: 1970—Continued
 (Crops harvested, poultry and poultry products sales, workpower, and off-farm work data are for the year 1969)

	Total all farms	Total operators reporting	Under 25 years	25 to 34 years	35 to 44 years	45 to 54 years	55 to 64 years	65 years and over
Poultry on Farms								
Chickens farms	2,307	1,915	17	115	383	622	518	260
number	40,747	33,492	295	1,651	7,531	10,590	9,299	4,126
Other poultry farms	208	171	-	8	31	68	42	22
number	1,015	682	-	40	134	273	152	83
Poultry and Poultry Products Sold								
Chickens farms	200	166	-	8	22	61	51	24
number	3,072	2,524	-	43	543	961	738	239
Chicken eggs farms	70	63	-	3	10	23	15	12
dozens	15,767	8,241	-	43	5,240	1,681	696	581
Source of Workpower								
Operators reporting	3,647	2,913	24	172	587	920	808	402
Mechanical power used	125	114	-	11	22	36	37	8
Animal power used	6	6	-	-	1	-	2	3
No mechanical or animal power used	3,516	2,793	24	161	564	884	769	391
Crops Harvested								
Vegetables and field crops:								
Taro farms	2,287	1,719	14	95	334	546	478	252
hectares	1,417	1,198	8	55	217	351	408	159
pounds	4,029,958	3,487,922	18,836	135,341	653,237	1,022,794	1,196,442	461,272
Yams farms	1,499	1,422	8	75	262	469	388	220
hectares	918	901	6	32	151	309	266	137
pounds	2,199,650	2,157,125	22,093	71,692	338,644	774,356	642,317	308,023
Sweet potatoes farms	757	514	3	33	90	178	144	66
hectares	113	80	(Z)	4	14	24	30	8
pounds	313,919	231,207	600	21,495	44,932	63,953	79,571	20,656
Sugarcane farms	707	534	4	27	100	165	147	91
hectares	3	2	(Z)	(Z)	(Z)	1	1	(Z)
pounds	74,919	62,213	1,323	3,422	9,805	18,955	17,928	10,780
Cassava farms	628	569	2	29	100	209	143	86
hectares	255	224	1	10	34	84	68	27
pounds	542,101	491,281	326	17,855	66,862	184,511	153,846	67,881
Cotton farms	90	88	-	2	31	24	16	15
hectares	45	44	-	1	13	12	10	8
pounds	20,473	20,223	-	150	12,383	3,078	3,098	1,514
Rice farms	93	79	1	3	34	31	3	7
hectares	75	73	(Z)	1	28	36	2	6
pounds	189,748	184,294	300	2,100	57,654	108,050	4,780	11,410
Tomatoes farms	44	44	-	2	12	12	16	2
hectares	1	1	-	(Z)	(Z)	(Z)	1	(Z)
pounds	16,996	16,996	-	105	4,731	4,720	7,260	180
Corn farms	129	116	-	4	26	36	35	15
hectares	24	23	-	(Z)	3	10	10	(Z)
pounds	65,975	62,770	-	2,160	12,650	23,140	22,040	2,780
Melons farms	317	244	2	14	43	80	68	37
hectares	65	63	1	6	15	15	21	5
pounds	385,451	347,552	2,048	34,380	69,161	93,061	128,978	19,924
Eggplant farms	63	58	-	6	14	14	20	4
hectares	6	6	-	(Z)	1	3	2	(Z)
pounds	26,285	25,945	-	465	4,330	10,825	9,725	600
Other crops and vegetables farms	78	72	-	8	14	23	20	7
hectares	29	29	-	1	5	17	6	(Z)
pounds	151,289	150,679	-	4,990	14,267	88,433	40,184	2,805
Fruits, nuts, and tree crops:								
Avocados farms	207	117	-	10	21	31	36	19
trees	110,751	5,971	-	52	599	687	2,358	2,275
pounds	1,652,663	91,468	-	1,460	7,795	9,270	36,718	36,225
Bananas farms	2,955	2,482	18	145	488	800	687	344
hills	396,584	387,330	4,542	10,556	75,947	104,398	134,155	57,732
pounds	3,982,087	3,897,225	43,595	91,406	757,587	1,022,998	1,439,928	541,711
Coffee farms	60	53	-	-	8	13	20	12
trees	29,871	28,802	-	-	14,203	3,563	6,467	4,569
pounds	98,501	94,673	-	-	43,616	11,651	20,871	18,535
Breadfruits farms	2,967	2,406	20	124	482	769	672	339
trees	213,367	158,509	1,573	6,016	30,578	44,128	53,048	23,166
pounds	6,227,736	6,074,331	84,998	205,622	1,163,255	1,662,419	2,055,930	902,107
Coconuts farms	3,082	2,456	19	130	472	800	688	347
trees	941,385	613,388	5,540	20,855	111,510	206,098	187,706	81,679
pounds	15,409,083	9,781,551	80,261	264,736	1,856,065	3,305,081	3,030,005	1,245,403
Mangoes farms	922	858	4	31	166	280	232	145
trees	12,878	12,412	5	624	2,586	3,571	3,955	1,671
pounds	642,422	622,337	230	27,325	121,584	182,125	210,902	80,171

Table 3. Summary by Age of Operator: 1970—Continued
(Crops harvested, poultry and poultry products sales, workpower, and off-farm work data are for the year 1969)

	Total all farms	Total operators reporting	Under 25 years	25 to 34 years	35 to 44 years	45 to 54 years	55 to 64 years	65 years and over
Crops Harvested—Continued								
Fruits, nuts, and tree crops—Continued								
Pineapples								
.farms	861	692	3	42	121	226	187	113
plants	87,984	75,815	122	2,852	15,949	23,418	21,213	12,261
fruits	84,136	72,777	122	2,782	15,259	22,017	20,522	12,075
Cacao	340	322	-	8	53	108	106	47
.farms	340	322	-	8	53	108	106	47
trees	9,362	8,833	-	962	1,637	1,030	2,638	2,566
pounds	35,354	34,995	-	4,590	4,938	4,028	10,889	10,550
Mandarin oranges	573	515	2	41	80	170	145	77
.farms	573	515	2	41	80	170	145	77
trees	12,826	11,872	33	283	2,980	3,464	3,333	1,779
pounds	270,755	253,238	666	5,374	59,586	70,674	76,950	39,988
Black pepper	108	94	-	6	18	34	25	11
.farms	108	94	-	6	18	34	25	11
plants	6,300	6,145	-	100	1,293	2,178	2,015	559
pounds	14,570	14,261	-	207	3,152	4,671	4,800	1,431
Operator Characteristics								
Place of residence:								
On farm	2,404	2,114	19	112	434	683	578	288
Off farm	1,096	756	5	59	144	231	213	104
Operators not reporting	357	164	2	12	43	49	39	19
Years operating the farm:								
Under 2 years	217	196	2	18	45	65	47	19
2 to 4 years	364	328	7	32	74	107	80	28
5 to 9 years	321	251	4	41	63	87	47	9
10 years and over	2,317	2,158	11	82	420	672	629	344
Operators not reporting	638	101	2	10	19	32	27	11
Main occupation:								
Agricultural	1,816	1,777	14	89	364	561	498	251
Nonagricultural	1,379	955	8	70	199	292	250	136
Operators not reporting	662	302	4	24	58	110	82	24
Days worked off farm:								
None	277	172	2	15	31	49	53	22
1 to 99 days	621	432	4	31	82	141	116	58
100 to 199 days	592	487	6	39	114	133	141	54
200 days and over	1,811	1,694	12	79	339	555	459	250
Operators not reporting	556	249	2	19	55	85	61	27

Table 4. Summary by Tenure of Operator: 1970
(Crops harvested, poultry and poultry products sales, workpower, and off-farm work data are for the year 1969)

	Total	Full owners	Part owners	Tenants
Farms and Land in Farms				
Farms	3,857	3,502	302	53
Percent distribution	100	90.8	7.8	1.4
Land in farms	39,647	32,078	4,079	3,490
Percent distribution	100	80.9	10.3	8.8
Average size of farm	10.3	9.2	13.5	65.8
Ownership				
Farms	3,857	3,502	302	53
hectares	39,647	32,078	4,079	3,490
Land owned	3,804	3,502	302	-
hectares	34,345	32,131	2,214	-
Land rented from others	355	-	302	53
hectares	5,415	-	1,925	3,490
Land rented to others	27	17	10	-
hectares	113	53	60	-
Land in Agriculture				
Land in place:				
1 tract	2,689	2,573	73	43
2 tracts	681	519	156	6
3 tracts and over	380	311	68	1
Operators not reporting	107	99	5	3

Table 4. Summary by Tenure of Operator: 1970—Continued
 (Crops harvested, poultry and poultry products sales, workpower, and off-farm work data are for the year 1969)

	Total	Full owners	Part owners	Tenants
Producing mainly for—				
Home consumption farms . .	3,545	3,237	264	44
Sale farms . .	247	-	-	-
Crop holding farms . .	154	135	16	3
Livestock and/or poultry holding farms . .	18	8	8	2
Mixed holding farms . .	70	55	11	4
Other farms . .	5	5	-	-
Operators not reporting farms . .	65	62	3	-
Land Use				
Cropland farms . .	3,782	3,440	292	50
hectares . .	27,257	24,198	2,275	784
In crops farms . .	3,705	3,362	296	47
hectares . .	17,438	15,435	1,680	323
Other cropland farms . .	1,869	1,683	161	25
hectares . .	9,819	8,611	749	459
Pastureland farms . .	751	618	120	13
hectares . .	6,941	3,282	1,180	2,479
Other land farms . .	1,742	1,578	143	21
hectares . .	5,449	4,750	470	229
Livestock on Farms				
Carabaos farms . .	84	80	4	-
number . .	137	128	9	-
Cattle and calves farms . .	230	187	36	7
number . .	5,234	768	871	3,595
Milk cows farms . .	27	15	11	1
number . .	78	34	24	20
Other cattle and calves farms . .	222	181	35	6
number . .	5,156	734	847	3,575
Hogs and pigs farms . .	2,182	1,975	183	24
number . .	12,630	8,913	645	3,072
Goats and kids farms . .	195	177	11	7
number . .	1,132	1,035	69	28
Horses, mules, and colts farms . .	13	9	3	1
number . .	50	25	16	9
Poultry on Farms				
Chickens farms . .	2,307	2,070	202	35
number . .	40,747	35,387	4,616	744
Other poultry farms . .	208	189	16	3
number . .	1,015	914	91	10
Poultry and Poultry Products Sold				
Chickens farms . .	200	182	15	3
number . .	3,072	2,594	428	50
Chicken eggs farms . .	70	62	7	1
dozens . .	15,787	15,604	115	48
Source and Ownership of Workpower				
Operators reporting	3,647	3,313	287	47
Mechanical power used	125	91	30	4
Owned by—				
Operator	18	11	5	2
Operator and another	11	11	-	-
Landlord	-	-	-	-
Private contractor	13	10	3	-
Government agency	101	71	27	3
Animal power used	6	6	-	-
Owned by—				
Operator	5	5	-	-
Operator and another	1	1	-	-
Landlord	-	-	-	-
Private contractor	-	-	-	-
Government agency	-	-	-	-
No mechanical or animal power used	3,516	3,216	257	43
Crops Harvested				
Vegetables and field crops:				
Taro farms . .	2,267	2,029	213	25
hectares . .	1,417	1,268	138	11
pounds . .	4,029,958	3,609,890	391,568	28,500
Yams farms . .	1,499	1,445	49	5
hectares . .	918	865	53	(2)
pounds . .	2,199,650	2,066,559	132,666	425
Sweet potatoes farms . .	757	706	43	8
hectares . .	113	90	20	3
pounds . .	313,919	261,209	45,660	7,050

Table 4. Summary by Tenure of Operator: 1970—Continued
 (Crops harvested, poultry and poultry products sales, workpower, and off-farm work data are for the year 1969)

	Total	Full owners	Part owners	Tenants
Crops Harvested—Continued				
Vegetables and field crops—Continued				
Sugarcane farms	707	671	30	6
hectares	3	3	(Z)	(Z)
pounds	74,919	69,311	2,397	3,211
Cassava farms	628	590	25	13
hectares	255	232	13	10
pounds	542,101	487,371	34,385	20,345
Cotton farms	90	86	4	-
hectares	45	41	4	-
pounds	20,473	19,663	810	-
Rice farms	93	92	1	-
hectares	75	74	1	-
pounds	189,748	187,248	2,500	4
Tomatoes farms	44	34	6	-
hectares	1	-	1	-
pounds	16,996	9,480	6,650	866
Corn farms	129	111	15	3
hectares	24	12	11	1
pounds	65,975	47,035	18,280	660
Melons farms	317	285	23	9
hectares	65	43	16	6
pounds	385,451	217,446	148,450	19,555
Eggplant farms	63	51	8	4
hectares	6	6	(Z)	(Z)
pounds	26,285	23,615	1,900	770
Other crops and vegetables farms	78	58	12	8
hectares	29	11	13	5
pounds	151,289	73,802	67,885	9,602
Fruits, nuts, and tree crops:				
Avocados farms	207	185	18	4
trees	110,751	110,581	157	13
pounds	1,652,663	1,650,298	2,315	50
Bananas farms	2,955	2,698	223	34
hills	396,584	358,076	28,654	9,854
pounds	3,982,087	3,601,321	279,646	101,120
Coffee farms	60	58	2	-
trees	29,871	26,861	3,010	-
pounds	98,501	88,471	10,030	-
Breadfruits farms	2,967	2,698	250	19
trees	213,367	183,017	25,079	5,271
pounds	6,227,736	5,419,841	688,580	119,315
Coconuts farms	3,082	2,782	274	26
trees	941,385	816,100	108,824	16,461
pounds	15,409,083	13,242,783	1,763,160	403,140
Mangoes farms	922	849	63	10
trees	12,878	11,374	1,466	38
pounds	642,422	590,695	49,835	1,892
Pineapples farms	861	819	36	6
plants	87,984	83,659	4,047	278
fruits	84,136	80,119	3,822	195
Cacao farms	340	320	18	2
trees	9,362	7,667	1,633	62
pounds	35,354	30,711	4,543	100
Mandarin oranges farms	573	512	50	11
trees	12,826	12,059	665	102
pounds	270,755	251,630	17,615	1,510
Black pepper farms	108	96	11	1
plants	6,300	5,770	520	10
pounds	14,570	13,462	1,058	50
Operator Characteristics				
Place of residence:				
On farm number	2,404	2,181	205	18
Off farm number	1,096	995	73	28
Operators not reporting number	357	326	24	7
Years operating the farm:				
Under 2 years number	217	203	7	7
2 to 4 years number	364	341	19	4
5 to 9 years number	321	290	19	12
10 years and over number	2,317	2,076	216	25
Operators not reporting number	638	592	41	5
Main occupation:				
Agricultural number	1,816	1,676	122	18
Nonagricultural number	1,379	1,271	88	20
Operators not reporting number	662	555	92	15
Days worked off farm:				
None number	277	250	21	6
1 to 99 days number	621	583	31	7
100 to 199 days number	592	530	51	11
200 days and over number	1,811	1,648	145	18
Operators not reporting number	556	491	54	11

Table 5. Vegetables and Field Crops: 1970
(Crops harvested data are for the year 1969)

	Farms reporting (number)	Area harvested (hectares)	Quantity harvested (pounds)		Farms reporting (number)	Area harvested (hectares)	Quantity harvested (pounds)
Taro	2,287	112	1,417,40	Rice	92	75	189,748
Yams	1,498	83	2,199,669	Tomatoes	44	27	14,560
Sweet potatoes	759	84	61,610	Corn	128	55	24,420
Sugarcane	707	26	3,880	Melons	317	60	65,121
Cassava	628	21	7660	Eggplant	62	33	19,910
Cotton	90	3	2,20	Other crops	78	41	22,579

56,013

Table 6. Fruits, Nuts, and Tree Crops: 1970
(Crops harvested data are for the year 1969)

	Farms reporting (number)	Trees, plants or hills (number)	Quantity harvested (pounds)		Farms reporting (number)	Trees, plants or hills (number)	Quantity harvested (pounds)
Avocados	287	97	110,751	Coconuts	234	3,082	941,386
Bananas	2,956	191	16,169	Mangoes	107	922	12,878
Coffee	60	6	36,27	Pineapples	76	861	9,518
Mandarin oranges	112	573	12,826	Cacao	4	340	167
Breadfruits	105	2,967	218,367	Black pepper	10	108	6,300

16,750

25,052

Table 7. Livestock and Poultry: 1970

	Farms reporting	Number on farms		Farms reporting	Number on farms
Carabaos of all ages	1	81	Goats and kids of all ages	56	105
Cattle and calves of all ages	15	2,230	Horses, mules, and colts of all ages	3	13
Milk cows	2,207	66,78	Chickens of all ages	204	2,207
All other cattle and calves	149	222	Other poultry of all ages (ducks, pigeons, guineas, geese)	13	200
Hogs and pigs of all ages	120	2,182			

Section 2

DISTRICT DATA

CONTENTS

	<i>page</i>
TABLE 8. Population, Land Area, Farms, Land in Farms, by District: 1970_____	12
9. Farms, Land in Farms, by Land Use, by District: 1970 _____	12
10. Farms, Land in Farms, by Size of Farm, by District: 1970 _____	12
11. Farms, Land in Farms, by Tenure of Operator, by District: 1970_____	13
12. Vegetables and Field Crops, by District: 1970_____	13
13. Fruits and Nuts, by District: 1970 _____	14
14. Livestock and Poultry, by District: 1970_____	14
15. Chickens and Eggs Sold, by District: 1969_____	15
16. Off-Farm Work by Farm Operators, by District: 1969 _____	15
17. Operator Characteristics, by District: 1970 _____	15
18. Land in Place, Type of Holding, by District: 1970 _____	16

Table 8. Population, Land Area, Farms, Land in Farms, by District: 1970

	Total population	Approximate land area		Number of farms	Land in farms, hectares	
		Square miles	ACRES Hectares		Total	Average size of farm
Trust Territory, total	90,940	717	186,703 <i>117,258</i>	3,857	30,647	10.9 <i>45.4</i>
Mariana Islands District	9,640	184	47,656	284	5,223	18.4
Marshall Islands District	22,888	70	18,130	233	1,327	5.7
Palau District	11,210	192	49,728	415	2,818	6.8
Ponape District	18,536	176	45,584	1,396	18,203	13.0
Truk District	21,041	49	12,691	977	9,854	10.1
Yap District	7,625	46	11,914	552	2,222	4.0

Source: United States Commercial Company, Economic Survey. Maps of the islands of Micronesia, Trust Territory of the Pacific Islands, reissued in 1965, by the Literature Production Center, Saipan. One square mile equals 259 hectares.

Table 9. Farms, Land in Farms, by Land Use, by District: 1970

	Total		Land in crops		Other cropland		Pastureland		Other land	
	Farms	Hectares	Farms	Hectares	Farms	Hectares	Farms	Hectares	Farms	Hectares
Trust Territory, total	3,857	30,647	3,705	17,438	1,860	9,810	751	6,041	1,740	5,440
Mariana Islands District	284	5,223 <i>12,906</i>	255	4,404 <i>600</i>	112	1,853 <i>700</i>	99	3,610	94	389 <i>961</i>
Marshall Islands District	233	1,327	233	862	126	281	24	39	63	145
Palau District	415	2,818	390	1,190	172	506	93	305	240	817
Ponape District	1,396	18,203	1,364	6,234	832	6,221	448	2,908	636	2,840
Truk District	977	9,854	940	7,437	302	1,608	71	29	301	780
Yap District	552	2,222	523	1,147	325	453	16	144	408	478

Table 10. Farms, Land in Farms, by Size of Farm, by District: 1970

	Total	Under 1 hectare	1 to 2 hectares	3 to 4 hectares	5 to 7 hectares	8 to 9 hectares	10 to 19 hectares	20 to 39 hectares	40 to 49 hectares	50 hectares and over	Farms									
Trust Territory, total	3,857	284	979	1,080	672	192	300	173	38	139										
Mariana Islands District	284	34	79	35	81	6	26	7	7	9										
Marshall Islands District	233	-	64	84	44	18	11	8	1	3										
Palau District	415	84	145	64	69	21	18	6	1	7										
Ponape District	1,396	-	72	527	306	120	180	105	15	71										
Truk District	977	84	371	212	116	16	50	40	13	45										
Yap District	552	82	248	128	56	11	15	7	1	4										
											Land in farms (hectares)									
Trust Territory, total	39,647	168	1,630	3,633	3,870	1,623	3,850	4,700	1,668	18,505										
Mariana Islands District	5,223	18	129	130	430	52	352	185	311	3,616										
Marshall Islands District	1,327	-	107	293	251	147	145	184	45	155										
Palau District	2,818	40	227	225	414	170	214	135	49	1,344										
Ponape District	18,203	-	135	1,701	1,817	1,028	2,304	2,922	664	7,632										
Truk District	9,854	43	615	829	642	135	650	1,105	554	5,281										
Yap District	2,222	67	417	455	316	91	185	169	45	477										

Table 11. Farms, Land in Farms, by Tenure of Operator, by District: 1970

	Farms				Land in farms (hectares)			
	Total	Full owners	Part owners	Tenants	Total	Full owners	Part owners	Tenants
Trust Territory, total	3,857	3,502	302	53	39,647	32,078	4,079	3,490
Mariana Islands District	284	230	38	16	5,223	830	1,268	3,125
Marshall Islands District	233	204	29	-	1,327	1,148	179	-
Palau District	415	376	21	18	2,818	2,698	58	62
Ponape District	1,396	1,351	42	3	18,203	17,537	593	73
Truk District	977	812	149	16	9,854	8,307	1,317	230
Yap District	552	529	23	-	2,222	1,558	664	-

Table 12. Vegetables and Field Crops, by District: 1970

(Crops harvested data are for the year 1969)

	Farms			Farms			Farms		
	Hectares	Pounds		Hectares	Pounds	Hectares	Pounds		
	Taro ✓			Yams ✓			Sweet Potatoes ✓		
Trust Territory, total	2,267	1,417	4,029,958	1,499	918	2,199,650	757	113	313,919
Mariana Islands District	112	16	56,013	83	24	76,013	84	15	61,610
Marshall Islands District	77	12	35,400	1	(2)	20	13	(2)	768
Palau District	285	117	316,670	27	(2)	3,705	127	18	30,560
Ponape District	574	363	1,132,710	1,075	835	2,003,953	74	22	68,685
Truk District	718	538	1,445,821	23	7	16,065	87	20	56,086
Yap District	501	371	1,043,344	290	52	99,894	372	38	96,210
	Sugarcane			Cassava ✓			Cotton		
Trust Territory, total	707	3	74,919	628	255	542,101	90	45	20,473
Mariana Islands District	26	(2)	3,880	21	4	7,660	3	(2)	220
Marshall Islands District	1	(2)	30	-	-	-	-	-	-
Palau District	48	(2)	4,614	198	109	222,904	-	-	-
Ponape District	247	2	31,387	270	131	287,963	84	41	19,453
Truk District	54	(2)	7,260	2	2	6,000	3	4	800
Yap District	331	1	27,748	137	9	17,574	-	-	-
	Rice			Tomatoes			Corn ✓		
Trust Territory, total	93	75	189,748	44	1	16,996	129	24	65,975
Mariana Islands District	-	-	-	27	1	14,560	55	17	39,205
Marshall Islands District	-	-	-	-	-	-	-	-	-
Palau District	-	-	-	8	(2)	1,306	9	(2)	1,570
Ponape District	81	73	185,394	9	(2)	1,130	51	7	22,610
Truk District	-	-	-	-	-	-	11	(2)	2,005
Yap District	12	2	4,354	-	-	-	3	(2)	585
	Melons ✓			Eggplant ✓			Other crops and vegetables		
Trust Territory, total	317	65	385,451	63	6	26,285	78	29	151,289
Mariana Islands District	60	49	320,885	33	4	19,910	41	23	136,095
Marshall Islands District	-	-	-	-	-	-	2	(2)	28
Palau District	13	1	5,125	16	1	3,265	18	4	10,487
Ponape District	64	9	34,072	13	1	2,935	2	(2)	550
Truk District	71	2	11,209	-	-	-	7	(2)	510
Yap District	109	4	14,160	1	(2)	175	8	2	3,619

Table 13. Fruits and Nuts, by District: 1970

(Crops harvested data are for the year 1969)

	Avocados ✓			Bananas ✓			Coffee ✓					
	Farms	Trees	Pounds	Farms	Hills	Pounds	Farms	Trees	Pounds			
Trust Territory, total	207	110,751	1,652,663	2,955	396,584	3,982,087	60	29,871	98,501			
Mariana Islands District	97	951	16,750	191	16,169	86,597	6	3,627	11,580			
Marshall Islands District	-	-	-	157	4,719	49,580	2	59	230			
Palau District	6	76	1,110	277	15,077	123,488	4	967	3,400			
Ponape District	7	404	5,750	1,302	179,189	1,941,028	37	14,663	51,362			
Truk District	93	109,295	1,628,770	530	164,915	1,653,762	4	10,325	31,150			
Yap District	4	25	283	498	16,515	127,632	7	230	779			
	Mandarin Oranges X			Breadfruits ✓			Coconuts ✓					
	Farms	Trees	Pounds	Farms	Trees	Pounds	Farms	Trees	Pounds			
Trust Territory, total	573	12,826	270,755	2,967	213,367	6,227,736	3,082	941,385	15,409,083			
Mariana Islands District	112	876	21,090	105	1,425	71,778	234	25,052	258,569			
Marshall Islands District	5	80	1,520	214	9,349	358,922	227	88,696	1,540,175			
Palau District	64	325	5,979	93	974	22,428	223	50,822	621,958			
Ponape District	166	8,559	182,596	1,240	100,072	3,035,948	1,057	337,355	5,704,225			
Truk District	30	703	14,160	794	85,622	2,137,555	826	360,487	5,895,440			
Yap District	196	2,283	45,410	521	15,925	601,105	515	78,973	1,388,716			
	Mangoes ✓			Pineapples ✓			Cacao X			Black pepper ✓		
	Farms	Trees	Pounds	Farms	Plants	Fruits	Farms	Trees	Pounds	Farms	Plants	Pounds
Trust Territory, total	922	12,878	642,422	861	87,984	84,136	340	9,362	35,354	108	6,300	14,570
Mariana Islands District	107	677	40,260	76	9,518	7,811	4	167	278	10	487	813
Marshall Islands District	4	1,465	48,900	-	-	-	-	-	-	-	-	-
Palau District	88	659	27,254	107	10,474	8,569	7	134	435	7	420	1,380
Ponape District	558	8,906	491,351	320	52,341	52,279	291	4,328	16,153	63	5,217	11,949
Truk District	103	596	18,197	94	4,094	3,792	36	4,722	18,447	12	99	252
Yap District	62	575	16,460	264	11,557	11,685	2	11	41	16	77	176

Table 14. Livestock and Poultry, by District: 1970

	Cattle and calves									
	Carabaos		Total		Milk cows		Other cattle and calves		Hogs and pigs	
	Farms	Number	Farms	Number	Farms	Number	Farms	Number	Farms	Number
Trust Territory, total	84	137	230	5,234	27	78	222	5,156	2,182	12,630
Mariana Islands District	1	1	152	4,996	22	66	149	4,930	120	3,447
Marshall Islands District	-	-	-	-	-	-	-	-	159	1,530
Palau District	22	35	5	5	-	-	5	5	210	528
Ponape District	57	97	66	225	4	11	62	214	1,010	5,462
Truk District	2	2	3	3	-	-	3	3	345	1,011
Yap District	2	2	4	5	1	1	3	4	338	652
	Goats and kids		Horses, mules, and colts		Chickens of all ages		Other poultry			
	Farms	Number	Farms	Number	Farms	Number	Farms	Number	Farms	Number
Trust Territory, total	195	1,132	13	50	2,307	40,747	208	1,015		
Mariana Islands District	56	277	3	16	204	7,439	13	89		
Marshall Islands District	-	-	1	5	183	5,151	3	53		
Palau District	10	20	1	1	237	3,856	16	43		
Ponape District	80	435	5	18	854	10,532	129	437		
Truk District	44	337	2	5	461	5,964	34	136		
Yap District	5	63	1	5	368	7,811	13	257		

Table 15. Chickens and Eggs Sold, by District: 1969
(Poultry and poultry products sold data are for the year 1969)

	Chickens of all ages sold		Chicken eggs sold	
	Farms	Number	Farms	Dozens
Trust Territory, total	200	3,072	70	15,767
Mariana Islands District	10	372	2	620
Marshall Islands District	17	200	5	22
Palau District	17	214	19	183
Ponape District	49	1,121	16	7,277
Truk District	45	261	9	97
Yap District	62	904	19	7,568

Table 16. Off-Farm Work by Farm Operators, by District: 1969

	All farm operators	Operators reporting				No off-farm work
		Off-farm work				
		Total	1 to 99 days	100 to 199 days	200 or more days	
Trust Territory, total	3,857	3,024	621	592	1,811	277
Mariana Islands District	284	213	84	33	96	58
Marshall Islands District	233	145	48	10	87	50
Palau District	415	280	119	62	99	12
Ponape District	1,396	1,349	57	201	1,091	25
Truk District	977	662	278	177	207	86
Yap District	552	375	35	109	231	46

Table 17. Operator Characteristics, by District: 1970

	All farm operators	Place of residence				Years on farm					Operators not reporting
		Operators reporting			Operators not reporting	Operators reporting					
		Total	On farm	Off farm		Total	Under 2 years	2 to 4 years	5 to 9 years	10 years and over	
Trust Territory, total	3,857	3,500	2,404	1,096	357	3,219	217	364	321	2,317	638
Mariana Islands District	284	264	100	164	20	225	8	31	34	152	59
Marshall Islands District	233	225	222	3	8	229	34	26	20	149	4
Palau District	415	297	101	196	118	296	23	36	46	191	119
Ponape District	1,396	1,383	1,297	86	13	1,383	31	81	107	1,164	13
Truk District	977	846	517	329	131	717	29	60	100	528	260
Yap District	552	485	167	318	67	369	92	130	14	133	183

	All farm operators	Age								Operators not reporting	Main occupation			Operators not reporting
		Operators reporting									Operators reporting			
		Total	Under 25 years	25 to 34 years	35 to 44 years	45 to 54 years	55 to 64 years	65 years and over	Average Age		Total	Agri-cultural	Nonagri-cultural	
Trust Territory, total	3,034	26	183	621	963	830	411	52	823	3,195	1,816	1,379	662	
Mariana Islands District	282	5	27	50	87	81	32	51	2	259	134	125	25	
Marshall Islands District	229	-	9	46	76	66	32	53	4	213	43	170	20	
Palau District	298	1	21	66	97	76	37	51	117	274	100	174	141	
Ponape District	1,374	6	64	291	451	365	197	52	22	1,359	1,342	17	37	
Truk District	543	10	40	125	155	154	59	51	434	629	155	474	348	
Yap District	308	4	22	43	97	88	54	53	244	461	42	419	91	

Table 18. Land in Place, Type of Holding by District: 1970

	Farms by number of tracts or pieces of land in the place					Type of holding						
	Operators reporting				Operators not reporting	Holdings produced mainly for home consumption	Holding produced mainly for sale					Operators not reporting
	Total	1 tract	2 tracts	3 tracts and over			Total	Crop holdings	Livestock and/or poultry holdings	Mixed holdings	Other holdings	
Trust Territory, total	3,750	2,689	681	380	107	3,545	247	154	18	70	5	65
Mariana Islands District	246	193	35	18	38	227	44	13	12	17	2	13
Marshall Islands District	230	158	46	26	3	232	1	1	-	-	-	-
Palau District	406	285	80	41	9	395	20	11	1	6	2	-
Ponape District	1,383	870	333	180	13	1,285	99	72	4	22	1	12
Truk District	945	706	150	89	32	875	73	48	1	24	-	29
Yap District	540	477	37	26	12	531	10	9	-	1	-	11

APPENDIXES

	<i>page</i>
APPENDIX A. Definitions and Explanations	A-1
APPENDIX B. Report Form	B-1

Appendix A. Definitions and Explanations

General Information

Descriptive summary and reference—The definitions and explanations that follow relate only to those items that are considered to be inadequately described in the tables where they appear. Most of the definitions consist of a resume of the questionnaire wording, supplemented by excerpts from instructions given to enumerators. For exact wording of the questions and of the instructions included on the questionnaire, see the facsimile of the 1970 agriculture questionnaire in appendix B.

Dates to which data relate—The year shown in the tables is the year of the census enumeration. The land in farms, fruit and nut trees, and livestock and poultry on hand represent the situation existing at the time of enumeration of each individual farm. Data for hectares and production of crops relate to the crops harvested during the 1969 crop year. Data for sales of chickens and chicken eggs relate to the calendar year 1969.

Farm operator—The term "farm operator" designates a person who operates a farm, either by doing the work himself or directly supervising the work. He may be the owner, a member of the owner's household, a tenant or renter, the manager, or the person in charge of an institutional farm. By definition the number of farm operators is the same as the number of farms.

Farms reporting or operators reporting—Figures for "farms reporting" represent the number of farms for which the specified item was reported. For example, if there were 150 farms in a district and only 130 of them reported chickens on hand, the number of farms reporting chickens would be 130. The difference between the total number of farms and the number of farms reporting a particular item represents the number of farms not having that item, provided a correct report was received for all farms.

Where applicable, figures are given for the number of farms or operators not reporting items that were intended to be obtained for all farms; for example, years on farm.

Land and Land Use

Land in farms—All data related to land tenure and to land in farms refer only to land located in the Trust Territory and operated on enumeration day. The land to be included in each farm was determined from the answers to questions 3 through 6 which relate to land tenure. (See the facsimile of the question-

naire in appendix B.) The hectares owned and the hectares rented from others or worked on shares for others were first added together and then the hectares rented to others or worked on shares by others were subtracted. The result represented the number of hectares in the farm. One hectare is equal to 2.47 acres.

Although the hectares designated "land in farms" consists primarily of "agricultural" land—that is, land used for crops, pasture, or grazing—it also includes areas of land not actually under cultivation nor used for pasture or grazing. For example, the entire area of woodland and wasteland that farm operators owned or rented from others was included as land in farms, unless reports indicated it was being held for nonagricultural purposes.

Land owned—This item includes all land that the operator and/or his wife held under title, purchase contract, or as heir or trustee of an undivided estate at the time of enumeration.

Land rented from others—This item includes not only land that the operator rented or leased from others but also land he worked on shares for others and land he occupied rent free.

Land rented to others—This item includes all land that the operator rented or leased to others and all land that he assigned to others on shares or on a rent-free basis. For the most part, the land rented to others represents agricultural land but it also includes land rented for residential or other purposes. For land leased, rented, or worked on shares, the tenant is considered to be the operator even though his landlord may supervise his operations. The landlord is considered as operator of only that portion of the land not assigned to tenants.

Land in farms according to use—The land in farms on enumeration day, has been distributed according to the way in which it was being used on the day of enumeration. The land uses described in the following paragraphs are mutually exclusive in that each acre of land is included only once even though it may have had more than one use during the year.

Land in crops refers to all land planted in crops at the time of the enumeration. Land was to be reported only once even if two or more crops were planted on the same land. It includes (1) field crops that will be grazed when mature or almost mature; (2) land

in bearing and nonbearing fruit and nut trees or plants, or any other tree crops; (3) land that had partial but not total crop failure; and (4) land in home gardens.

Other cropland includes all land that the operator considers as cropland but on which no crops are planted. It should include (1) land used for pasture and grazing that the operator feels could have been used for crops without additional clearing or irrigation; (2) land with total crop failure as a result of drought, flood, insects, fire, or other cause; (3) idle and fallow cropland; and (4) cropland with soil improvement grass, cover crops, etc., for the purpose of said improvement.

Pasture land refers to the land where livestock are pastured or are being grazed, except for the cropland pasture previously reported. Includes woodland being used for pasture.

Other land includes all land that does not qualify either as cropland or pastureland as defined above. It includes land in house and building lots, lanes, roads, ditches, ponds, swamps, steep slopes, wasteland, brushland, and nonpastured woodland. Woodland refers to all farm wood lots or timber tracts, natural or planted, and to cutover land with young growth which has or will have value as wood or timber.

Holdings

Type of holding—The purpose of the items under this heading was to classify holdings according to whether they were producing mainly for home consumption or mainly for sale, and then to classify the holdings belonging to the latter category by the most important types of agricultural production.

The first classification is based on the destination of the agricultural output of the holding during the year in question. Agricultural output refers to that which is left over after rent has been paid to the landlord and/or that which remains after deduction of the produce used on the holding for further agricultural production; for example, forage or seed.

Holdings with production mainly for home consumption—This applies to holdings where 50 percent or more of the agricultural output of the holding is consumed by the holder's household.

Holdings with production mainly for sale—This applies to holdings where more than 50 percent of the agricultural output of the holding is produced for sale. These holdings producing mainly for sale were classified further according to their most important activity:

- a. *Crop holding*—More than 50 percent of the value of the sales of the holding was from the sale of crops.
- b. *Livestock and/or poultry holding*—More than 50 percent of the value of the sales of the holding was from the sale of livestock or poultry and their products.
- c. *Mixed holding*—No one of the above items accounts for more than 50 percent of the value of sales of the holding.
- d. *Other holding*—This group includes holdings not belonging to any of the previous groups.

Crops

Hectares of crops harvested—The area for individual crops was reported in terms of hectares and hundredths of hectares harvested. When two or more crops, or two or more plantings of the same crop were harvested from the same land, the area was to be reported for each separate crop or planting. The hectares reported for vegetables and field crops relate only to the hectares harvested in 1969.

For fruits, nuts, and tree crops, the figures for number of trees and plants relate to the number of all ages at the time of the enumeration.

Quantity of crops harvested—Data for quantity harvested were obtained for vegetables, field crops, and for fruits and nuts. Total quantities of each crop harvested were to be reported, whether the crops were for home use or for sale.

Unit of measure—All quantities harvested were to be reported in pounds; except for pineapples, which are reported in number of fruits.

Livestock and Poultry

Inventories—Enumerators were instructed to report the number of livestock and poultry on the farm at the time the questionnaire was filled.

All livestock and poultry were to be enumerated on the place where they were at the time of enumeration, regardless of who owned them. Livestock on unfenced land were to be reported as being on the place where the person who had control over them had his headquarters.

Cattle and calves—"Milk cows" were defined as cows that had been milked at any time during the preceding 12 months. All other cows were to be included in the report for "other cattle and calves."

Sales of chickens and chicken eggs—Data on sales of chickens of all ages and of chicken eggs were for the year 1969. Only the quantities sold were to be reported. No questions were asked about the value of the sales.

Workpower

Source and ownership of workpower—Sources of workpower refers to those sources used only for agricultural activities on the place in 1969, whether or not the animal or mechanical power used belonged to the operator.

Operator Characteristics

Residence of operator—Farm operators were classified by residence according to whether or not they lived on the farms they were operating. Some of those who did not live on the farms they operated themselves lived on farms operated by others. In cases where all the land was rented from others or worked on shares for others, the operator was considered to live on the farm

operated provided the dwelling he occupied was included in the rental agreement. The dwelling, in such cases, was not necessarily on the land being operated. Similarly, a farm operator who did not live on the land being cultivated or grazed but who had some agricultural operations (other than a home garden) at his dwelling was considered as living on the farm operated.

Year began operating present farm—Enumerators were instructed to report the year during which a farm operator began to operate his present farm. The year was intended to refer to the first year of the period during which the operator had been in continuous charge of his present farm or of any part of it.

Age of operator—For the 1970 census, farm operators were classified by age into six age groups. The average age of farm operators was derived from the sum of the ages of all farm operators reporting age divided by the number of operators reporting.

Work off farm—The extent to which farm operators rely on nonfarm sources for part of their income is indicated by the number of days worked off the farm during 1969.

Classification of Farms

Farms by size—Farms were classified by size on the basis of the total land area determined for each farm. According to the census definition, a farm is essentially an operating unit, not an ownership tract. All land operated by one person or partnership represents one farm. In the case of tenants, the land assigned to each tenant is considered a separate farm, even though the landlord may consider his entire land holding to be one unit rather than several separate units.

Farms by tenure of operator—In the 1970 census, farms were classified by tenure of operator on the basis of data reported for land owned, land rented from others, or worked on shares for others.

During the processing operations for the 1970 census, each questionnaire was coded to indicate whether the farm operator was a full owner, a part owner, or a tenant. The various classifications of tenure are defined as follows:

- a. Full owners operate only land they own.
- b. Part owners operate land they own and also land they rent from others.
- c. Tenants rent from others or work on shares for others all the land they operate.

Report Form

Budget Bureau No. 41-569059; Approval Expires December 1970

<p>FORM 69-A1 (TT) (10-14-69)</p> <p style="text-align: center;">CENSUS OF AGRICULTURE - 1970 UNITED STATES TRUST TERRITORY OF THE PACIFIC ISLANDS</p>	<p>U.S. DEPARTMENT OF COMMERCE BUREAU OF THE CENSUS</p>	<p>Fill this questionnaire if any member of the household harvested (or gathered) any crops or vegetables during 1969, or now has 10 or more fruit or nut trees or plants, or any livestock or 5 or more poultry.</p> <p style="text-align: right;">Questionnaire number →</p>
--	---	--

Section 1 - OPERATOR

<p>1. What is your name (the operator)? . . .</p> <p>2. What is your address? (Give the address where the operator receives correspondence)</p>	<p>Full name</p> <p>Address</p>
---	---------------------------------

Section 2 - LAND IN AGRICULTURE

	None	Hectares	Hundredths
3. How many hectares do you own?	<input type="checkbox"/>		
4. How many hectares do you rent from others? - Include land used rent free.	<input type="checkbox"/>		
a. What is the name of the owner of the land? - Full name _____			
5. How many hectares do you rent to others? - Include land for which no rent is received.	<input type="checkbox"/>		
6. TOTAL AREA OF THIS PLACE (To obtain total area of this place, add questions 3 and 4 and subtract from this total the entry in question 5.) →			
7. How many separate tracts or pieces of land or plantations are represented in the "Total area of this place?"			Number of pieces
8. Is this holding producing mainly for - (Mark one) a. <input type="checkbox"/> Home consumption? - (Go to Section 3) b. <input type="checkbox"/> Sale?			
9. If producing mainly for sale, is it a - (Mark one) a. <input type="checkbox"/> Crop holding? c. <input type="checkbox"/> Mixed holding? b. <input type="checkbox"/> Livestock and/or poultry holding? d. <input type="checkbox"/> Other?			

Section 3 - CROPS HARVESTED IN 1969

	None	How much was harvested in 1969?		How many hectares were harvested in 1969?	
		Pounds		Hectares	Hundredths
VEGETABLES AND FIELD CROPS Were any of these crops harvested last year?					
10. Taro	<input type="checkbox"/>				
11. Yams	<input type="checkbox"/>				
12. Sweet potatoes	<input type="checkbox"/>				
13. Sugarcane	<input type="checkbox"/>				
14. Cassava	<input type="checkbox"/>				
15. Cotton	<input type="checkbox"/>				
16. Rice	<input type="checkbox"/>				
17. Tomatoes	<input type="checkbox"/>				
18. Corn	<input type="checkbox"/>				
19. Melons	<input type="checkbox"/>				
20. Eggplant	<input type="checkbox"/>				
21. Other crops - Specify → _____	<input type="checkbox"/>				

Report Form—Continued

Section 3 – CROPS HARVESTED IN 1969 – Continued			
<p>FRUITS, NUTS, AND TREE CROPS <i>Quantity harvested in 1969 and number of trees or plants on this place</i> Which of the following fruits, nuts, or tree crops were harvested last year or are on this place now?</p>	None	How much was harvested in 1969?	How many plants or trees (all ages) are on this place? Number
22. Avocados	<input type="checkbox"/>	Pounds	
23. Bananas	<input type="checkbox"/>	Pounds	Hills
24. Coffee	<input type="checkbox"/>	Pounds	
25. Mandarin oranges	<input type="checkbox"/>	Pounds	
26. Breadfruits	<input type="checkbox"/>	Pounds	
27. Coconuts	<input type="checkbox"/>	Pounds	
28. Mangoes	<input type="checkbox"/>	Pounds	
29. Pineapples	<input type="checkbox"/>	Fruits	
30. Cacao	<input type="checkbox"/>	Pounds	
31. Black pepper	<input type="checkbox"/>	Pounds	
32. Other fruits, nuts, or tree crops – <i>Specify</i> → _____	<input type="checkbox"/>	Unit	
	<input type="checkbox"/>	Unit	
Section 4 – LAND USE			
<p>Of the total hectares in this place (question 6) –</p>	None	Hectares	Hundredths
33. How many hectares are in crops?	<input type="checkbox"/>		
34. How many hectares are in other cropland (cropland pasture, crop failure, idle and fallow land, etc.)?	<input type="checkbox"/>		
35. How many hectares are in pastureland?	<input type="checkbox"/>		
36. How many hectares are in other land?	<input type="checkbox"/>		
37. TOTAL LAND (<i>Add entries in questions 33 through 36. This total should be equal to the entry in question 6.</i>) →			
Section 5 – LIVESTOCK AND POULTRY			
<p>How many of the following livestock and poultry are on this place on enumeration day?</p>	None	Number	
38. Carabaos of all ages	<input type="checkbox"/>		
39. Cattle and calves of all ages	<input type="checkbox"/>		
Of this total, how many are –			
a. Milk cows	<input type="checkbox"/>		
b. All other cattle and calves	<input type="checkbox"/>		
(<i>The sum of questions "a" and "b" must equal the total for question 39.</i>)			
40. Hogs and pigs of all ages	<input type="checkbox"/>		
41. Goats and kids of all ages	<input type="checkbox"/>		
42. Horses, mules, and colts of all ages	<input type="checkbox"/>		
43. Chickens of all ages	<input type="checkbox"/>		
44. Other poultry of all ages (ducks, pigeons, guineas, geese, etc.) – <i>Specify</i> → _____ _____	<input type="checkbox"/>		
		Sold in 1969	
		None	Quantity
45. How many chickens of all ages were sold during last year?	<input type="checkbox"/>		
46. How many dozens of chicken eggs were sold during last year?	<input type="checkbox"/>		

Report Form—Continued

Section 6 – SOURCE AND OWNERSHIP OF WORKPOWER USED ON THIS PLACE IN 1969						
47. What source of workpower was used on this place last year? a. Mechanical power <input type="checkbox"/> Yes <input type="checkbox"/> No <i>(Check "Yes" box if any agricultural work was done on this place by some machine or machines propelled or operated by petroleum, oil, gas, steam, water, wind, or electricity.)</i> b. Animal power <input type="checkbox"/> Yes <input type="checkbox"/> No <i>(Check "Yes" box if any agricultural work was done on this place by horses, mules, burros, oxen, carabaos, or any other animal.)</i>						
48. Who owned the following source of power?						
	You (the operator)	You and another person jointly	Your landlord	A private contractor	A government agency	Power not used
a. Tractors	<input type="checkbox"/>	<input type="checkbox"/>	<input type="checkbox"/>	<input type="checkbox"/>	<input type="checkbox"/>	<input type="checkbox"/>
b. Other mechanical power	<input type="checkbox"/>	<input type="checkbox"/>	<input type="checkbox"/>	<input type="checkbox"/>	<input type="checkbox"/>	<input type="checkbox"/>
c. Animal power	<input type="checkbox"/>	<input type="checkbox"/>	<input type="checkbox"/>	<input type="checkbox"/>	<input type="checkbox"/>	<input type="checkbox"/>
Section 7 – OPERATOR CHARACTERISTICS						
<i>All these questions are related to the farm operator</i>						
49. Do you live on this place? <input type="checkbox"/> Yes <input type="checkbox"/> No						
50. In what year did you begin to operate this place?						Year . . .
51. How old were you on your last birthday?						Years old . . .
52. What is your main occupation? a. <input type="checkbox"/> Agricultural b. <input type="checkbox"/> Non-agricultural						
53. How many days did you work off this place in 1969? <input type="checkbox"/> None <input type="checkbox"/> 1 to 99 days <input type="checkbox"/> 100 to 199 days <input type="checkbox"/> 200 or more days						
Section 8 – ENUMERATOR'S RECORD						
<i>To be filled by the Census enumerator</i>						
54. Who furnished the information in this report? <input type="checkbox"/> Operator <input type="checkbox"/> Wife or member of the operator's family <input type="checkbox"/> Landlord <input type="checkbox"/> Hired laborer <input type="checkbox"/> Other – Specify _____						
Remarks – <i>Make any remarks needed in regard to the place, the owner or operator, the crops cultivated, or the livestock on this place.</i> _____ _____ _____ _____ _____ _____ _____ _____ _____ _____						
Island			District		Enumeration District Number	
Municipality				Village		
Certified by (Enumerator)					Date	
Checked by (Crew leader)					Date	