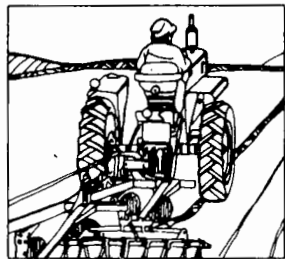
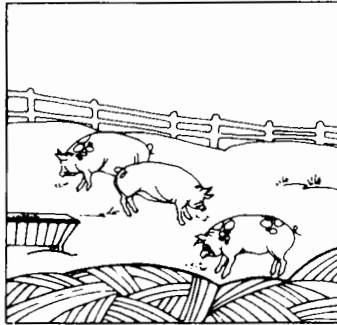
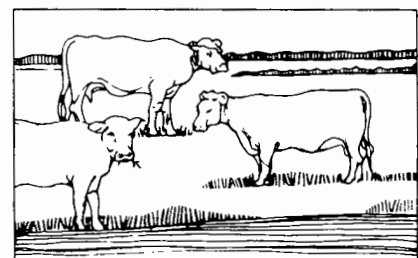
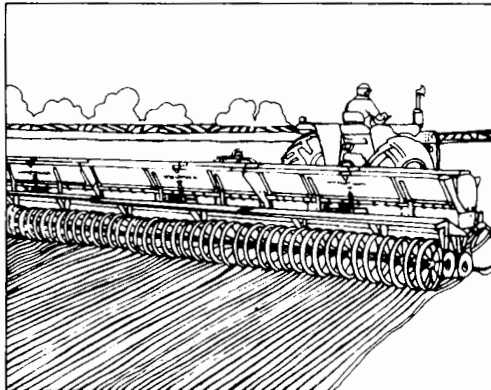
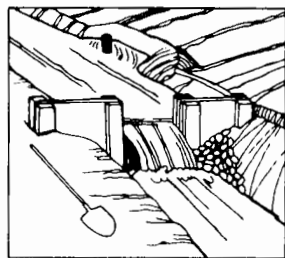
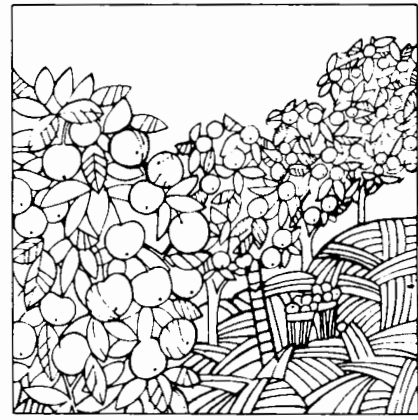
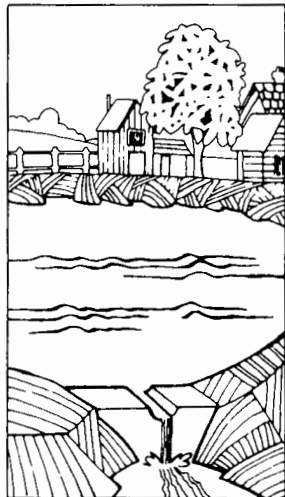


part 55
TRUST TERRITORY

**VOLUME I
AREA REPORTS**



**1969
CENSUS OF
AGRICULTURE**



Issued September 1972



U. S. DEPARTMENT OF COMMERCE Peter G. Peterson, Secretary
James T. Lynn, Under Secretary
Harold C. Passer, Assistant Secretary for Economic Affairs
and Administrator,
Social and Economic Statistics Administration
BUREAU OF THE CENSUS George Hay Brown, Director



BUREAU OF THE CENSUS

George Hay Brown, Director

Robert L. Hagan, Deputy Director

Walter F. Ryan, Associate Director for Economic Fields

James W. Turbitt, Associate Director for
Economic Operations

AGRICULTURE DIVISION

J. Thomas Breen, Chief

REPORTS OF THE 1969 CENSUS OF AGRICULTURE

Individual County Reports

These eight-page reports are issued for each county and State. They also appear as section 2 of volume 1 for the State to which they pertain. The tables contain totals for farms, land, production, expenses, income and sales, machinery and equipment, livestock, crops, and nursery, greenhouse, and forest products.

Volume I. Area Reports

A separate report is published for each State, American Samoa, Guam, Puerto Rico, Trust Territory, and the Virgin Islands. The report consists of two sections. Section 1 contains the introduction, State summary data, county summary of selected data, miscellaneous items by counties (crops or livestock appearing in relatively few counties and therefore not listed in the county tables on a nationwide basis), and an appendix giving explanations, definitions, and examples of the report forms used. Section 2 contains the detailed county reports.

Volume II. General Report

Statistics by subject will be presented, with totals for the United States, Regions, and States.

Volume III. Agricultural Services

This is a new report which will contain data relating to agricultural services.

Volume IV. Irrigation

Data will be included on drainage basins, land irrigated, crop production on irrigated land, water conveyed, users, and types of organization.

Volume V. Special Reports

Reports will be based on data obtained from supplemental surveys, such as type of farm, horticulture, and farm finance; and other subjects based on information obtained in the census.

ACKNOWLEDGMENTS—Many persons participated in the various activities of the 1969 Census of Agriculture. Primary direction of the program was performed by J. Thomas Breen, Chief, Agriculture Division, with the helpful guidance and review of Conrad Taeuber, Associate Director for Demographic Fields. Kenneth R. Norell, Assistant Chief for Special Surveys, Agriculture Division, participated in the overall planning and supervised the preparation of instructions for office processing, training materials, the development of enumeration procedures, and the technical review of statistics prior to their publication. Hector Vila, Chief of Outlying Areas Statistical Branch, made significant contributions to the planning and in the preparation of instructions and training materials for the enumeration and in the handling of technical problems in connection with office processing. Theodore G. Clemence, under the 1970 Census coordinator's staff, worked in the general planning program.

The census data were collected at the direction of the High Commissioner of the Trust Territory of the Pacific Islands, Honorable Edwards E. Johnston. The actual collection of the data was carried out by census enumerators under the supervision of Francis H. Wilmer.

The manual processing of the questionnaires was performed in Agriculture Division, Washington, D.C., and in the Census Operations Office, Jeffersonville, Indiana.

SUGGESTED CITATION

U.S. Bureau of the Census, Census of Agriculture, 1969
Volume I. Area Reports
Part 55. TRUST TERRITORY

U.S. Government Printing Office, Washington, D.C., 1972

LIBRARY OF CONGRESS CARD NO. 72-601370

For sale by the Superintendent of Documents, U.S. Government Printing Office, Washington, D.C., 20402, or any Department of Commerce field office. Price 50 cents.

Contents

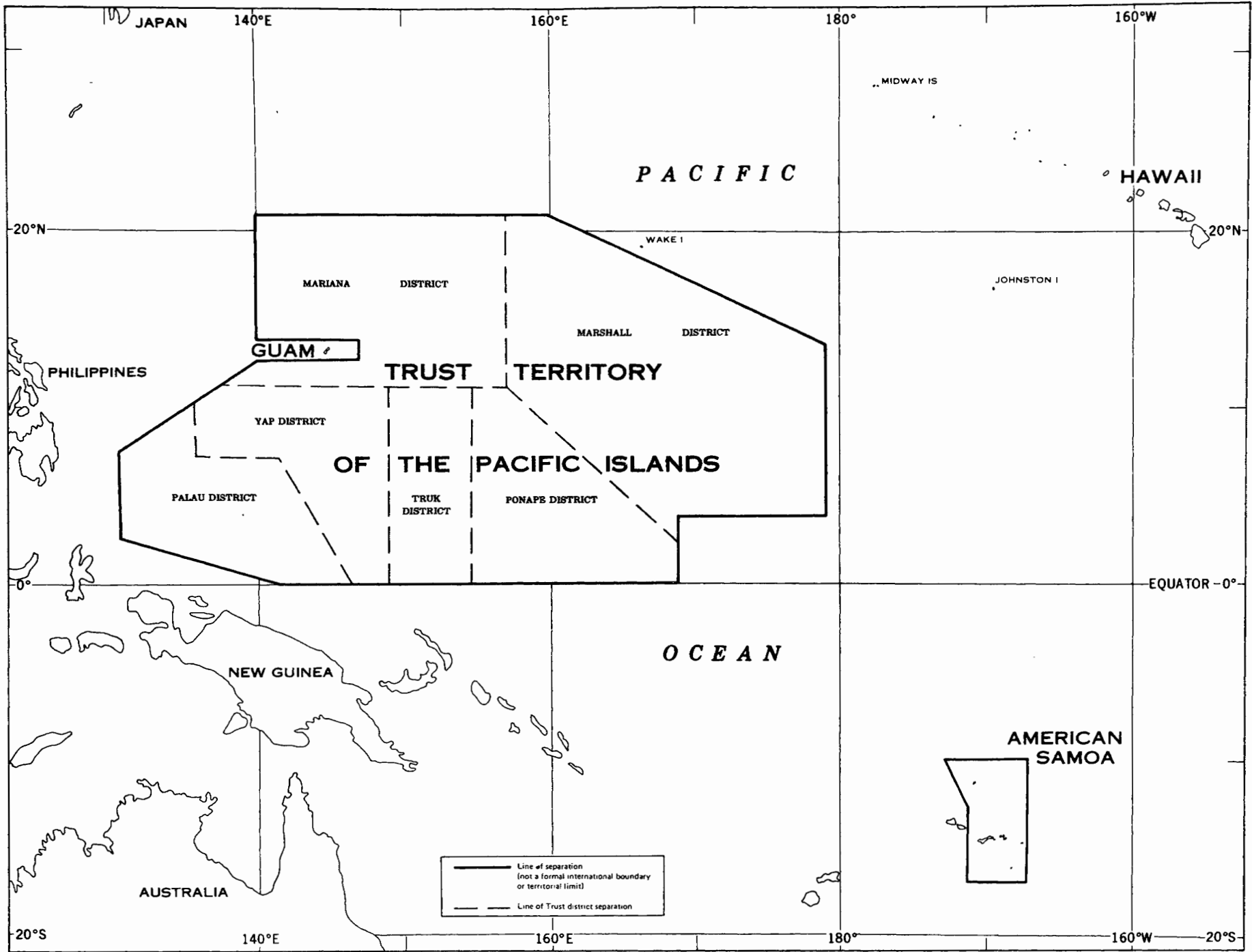
	<i>page</i>
Map.....	iv
Introduction.....	v
Section 1. Summary Data	1
Section 2. ^{Municipality} District Data	11

APPENDIXES

A. Definitions and Explanations	A-1
B. Report Form.....	B-1

TRUST TERRITORY OF THE PACIFIC ISLANDS

Districts, Municipalities, Islands, Atolls, and Places



Introduction

History of the Census

The 1970 Census of Agriculture is the first U.S. Census of Agriculture of the Trust Territory of the Pacific Islands. The 1970 Census of Agriculture for the Trust Territory was taken as part of the U.S. 1969 Census of Agriculture and enumerated in conjunction with the 1970 Population Census for the U.S. Trust Territory of the Pacific Islands.

Authority and Area Covered

The Census of Agriculture is authorized by an Act of Congress, "Title 13, United States Code—Census", codified August 31, 1954, as amended. Section 191 provides that the census data for U.S. Trust Territory of the Pacific Islands may be collected by the High Commissioner, or the highest ranking Federal official, in accordance with plans prescribed or approved by the Secretary of the U.S. Department of Commerce. The current 1970 census covers agriculture in each one of the States and in American Samoa, Guam, Puerto Rico, U.S. Trust Territory of the Pacific Islands, and the Virgin Islands.

The Agriculture Questionnaire

The questionnaire for the 1970 Census of Agriculture was prepared by the staff of the Census Bureau in cooperation with the Government of the Trust Territory. It contained a total of 54 inquiries, most of which consisted of several parts. Selection of the inquiries was based on current needs for agricultural information as well as on experience gained in earlier censuses of Guam and other similar areas. Definitions and explanations for selected items are given in appendix A. A facsimile of the 1970 questionnaire is shown in appendix B.

Training Program for Enumeration Personnel

Each supervisor, assistant supervisor, and enumerator employed for the 1970 Census of Population and Housing and the 1970 Census of Agriculture in the Trust Territory received special training for his job. All training was presented according to procedures prepared by the Bureau of the Census. It included practice interviewing, practice filling of questionnaires, and detailed discussion of the written instructions given to enumerators.

Enumeration Period

The enumeration for the census of agriculture was scheduled to begin on April 1, 1970, at the same time and in conjunction with the enumeration for the census of population and housing; however, due to a delay in the starting of the population census in the Trust Territory, most of the agriculture census forms were not completed until the end of the summer of 1970.

Dates to Which Data Relate

The 1970 census figures for land in farms, land use, fruit and nut trees, and livestock and poultry on hand represent the situation existing at the time of enumeration of each individual farm. Data for hectares and production of crops relate to the crops harvested during the crop year 1969. Data for sales of chickens and chicken eggs relate to the calendar year 1969.

The Enumeration

The schedule which enumerators used for taking the 1970 Census of Population and Housing in the Trust Territory contained a section where the enumerator was to determine if an agricultural form should also be filled out. A "yes" answer to any one of the three questions in this section meant an agriculture questionnaire must be filled out. The three questions were—

Is this house on a farm?

Were any crops or vegetables harvested from this place in 1969, or is there now a combined total of 10 or more fruit trees or plants on the place?

Does this place have any livestock or five or more poultry?

The enumerator was also instructed to ask enough questions about tracts of land on which no one lived to determine whether an agriculture questionnaire was required for the person in charge of the land. This instruction was designed to assure enumeration of all land used for agriculture.

Enumeration Districts

For purposes of enumeration, the Trust Territory was divided into Enumeration Districts, or "ED's". The ED's were clearly outlined on special maps prepared for the census. Each enumerator was required to canvas the entire area within his assigned ED.

To avoid enumeration of the same place by two or more enumerators, the Census Bureau established rules whereby each enumerator could determine whether or not he was responsible for obtaining the agriculture questionnaire for a given place. If a place was entirely within the boundaries of one ED, the enumerator for the ED was required to obtain the questionnaire, regardless of where the person in charge of the operations lived. If a place was partly in one ED and partly in another, the enumerator for the ED in which the person in charge lived was responsible for obtaining the questionnaire. In such case, he was to report on the questionnaire all the land that the person in charge operated in the Trust Territory, including the land outside his ED.

Census Definition of a Farm

The statistics presented in this report relate to places qualifying as census farms. For the 1970 Census of Agriculture in the Trust Territory, a farm was defined as any place on which any crops or vegetables were harvested or gathered during 1969, or on which there was a combined total of 10 or more fruit or nut trees or plants or on which any livestock, or five or more poultry were kept on or about the time of enumeration.

Office Processing

Each enumerator's work was examined and checked for completeness by the Agriculture Division, Bureau of the Census, in Washington, D.C. All questionnaires were individually edited and coded prior to tabulation of the data. In the editing process, questionnaires that did not represent farms, according to the census definition, were withdrawn from further processing. The remaining questionnaires were then examined for completeness and consistency. Errors in calculations and units of measure, inconsistencies, and misplaced entries were corrected. Incomplete reports were adjusted on the basis of related information on the same questionnaire or on questionnaires for nearby farms of similar type and size.

In the coding process, numerical codes were entered on all questionnaires to classify farms by size in terms of total area, by

tenure of operator, and by age of operator. After the questionnaires had been edited and coded, the information on them was transferred to tabulation sheets. Subject matter specialists of the Bureau of the Census examined the tabulations for reasonableness and consistency. As necessary, they made corrections on the basis of a further reappraisal of the original reports before approving the data for publication.

Presentation of Statistics

This report contains data as compiled from the questionnaires used for the 1970 Census of Agriculture in the Trust Territory. Totals are given for each District and for the Trust Territory as a whole.

Abbreviations and Symbols

The following abbreviations and symbols may occur in the tables:

- Zero
- X Not applicable
- NA Not available
- D Data withheld to avoid disclosing figures for an individual farm or farm operation
- Z Reported in small fractions.