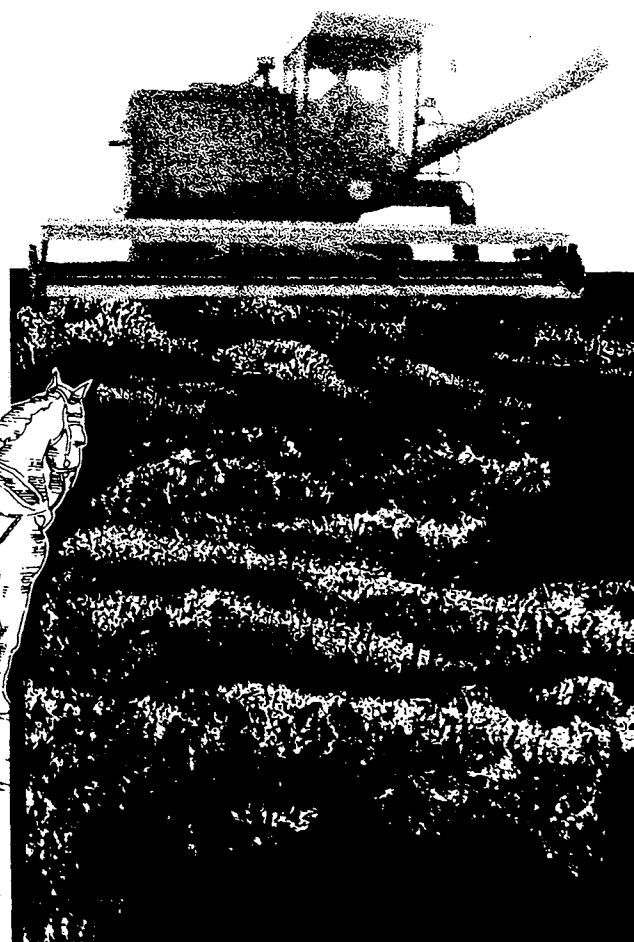
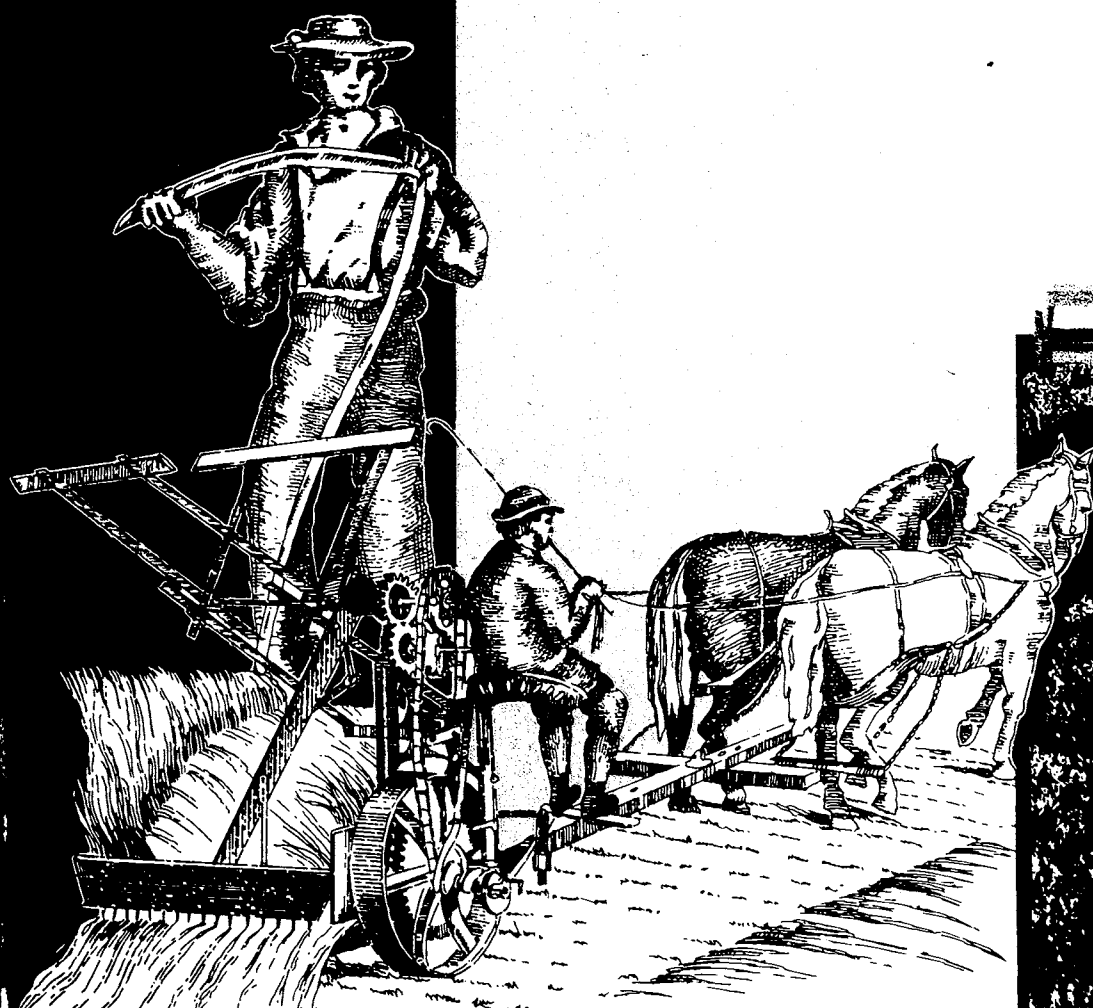


1974 Census of Agriculture

U.S. Department of Commerce
BUREAU OF THE CENSUS

Volume III

Agricultural Services



DATA REFERENCE GUIDE

	Tables																				
	1	2	3	4	5	6	7	8	9	10	11	12	13	14	15	16	17	18	19	20	21
Census year:																					
1974	X	X	X	X	X	X	X	X	X	X	X	X	X	X	X	X	X	X	X	X	X
1969											X	X	X	X	X	X	X				X
Standard industrial classification	X	X	X	X	X	X	X	X	X	X								X			
Geographic classification:																					
United States	X	X	X	X	X	X	X	X	X	X	X	X	X	X	X	X	X	X	X		X
Regions											X	X	X	X	X	X	X	X	X		
States											X	X	X	X	X	X	X	X	X	X	
Counties																				X	X
Type of organization					X				X					X							
Establishments (reporting units)	X	X	X	X	X	X	X	X	X	X	X		X	X	X	X	X	X	X	X	X
Receipts																					
Gross	X				X					X	X			X			X	X	X	X	X
Total	X										X							X		X	X
Labor																					
Payroll	X	X			X						X	X		X				X		X	X
Supplemental labor cost			X															X			
Seasonal variation				X									X								
Number of employees																					
Paid		X		X								X	X								
Unpaid		X		X								X	X								
Capital expenditures									X												
Depreciable assets									X												
Cotton ginnings and pickery																	X				
Receipts from products provided								X													
Number of activities performed							X									X					

1974
Census
of
Agriculture

Volume III

Agricultural Services

Issued May 1977



U.S. Department of Commerce
Juanita M. Kreps, Secretary

BUREAU OF THE CENSUS
Robert L. Hagan, Acting Director

BUREAU OF THE CENSUS

Robert L. Hagan, Acting Director
Shirley Kallek, Associate Director for Economic Fields

AGRICULTURE DIVISION

Orvin L. Wilhite, Chief

ACKNOWLEDGMENTS—Many persons participated in the various activities of the 1974 Census of Agriculture. Primary direction was by Shirley Kallek, Associate Director for Economic Fields. Her predecessor, James W. Turbitt, now Associate Director for Administration and Field Operations, directed the early stages of planning for the census.

This report was prepared in the Agriculture Division under the general supervision of J. Thomas Breen, Chief (to February 1976) and Orvin L. Wilhite, his successor. Kenneth R. Norell, assisted by Wilmer R. Maxham and John C. Womack, was directly responsible for planning and taking the Census of Agricultural Services and the compilation of statistics. The edit specifications were prepared by Demosthenes Birbilis, Statistician. Ronald Harris, Statistician, assisted in table review and preparation of the text.

Important contributions to the determination of the content of the report form were made by personnel from the U.S. Department of Agriculture; U.S. Department of Health, Education, and Welfare (Social Security Administration); U.S. Department of Labor; and the Executive Office of the President (Office of Management and Budget). Members of the Census Advisory Committee on Agriculture Statistics and a number of individuals representing research organizations, professional associations, government agencies, and other groups also made significant recommendations and suggestions.

Systems and processing procedures were developed under the direction of Robert Taylor, Assistant Chief, Agriculture Division. William Adams was responsible for the clerical procedures and Diane Simmons and Allen Blackburn were responsible for the computer procedures and programming. O. Bryant Benton, Chief, Data Preparation Division, Jeffersonville, Ind. (to March 1976), and Don L. Adams, his successor, assisted by Robert L. Allen, Rebecca

Nesbit, and Darrell L. Farabee, were directly responsible for clerical and data encoding operations.

The computer processing facilities used were under the general supervision of James R. Pepal, Chief, Computer Services Division (to May 1976), and Thomas C. DiNenna, his successor.

Within the Publications Services Division, many individuals made significant contributions in publications planning and design, editorial review, composition, and printing procurement.

Special tribute is paid to the thousands of establishment operators and others who furnished the information requested in this census. Only through their cooperation was it possible to collect and publish the data in this report.

Library of Congress Cataloging in Publication Data

United States. Bureau of the Census.
1974 Census of Agriculture.

CONTENTS: v. 1. State reports. v.—v.2. Statistics by subject. v.—v. 3. Agricultural services. v.—v. 4. Special reports. v.

1. Agriculture—Economic aspects—United States—Statistics—Collected works. I. Title. II. Title: Census of agriculture.

HD1753 1975.B87 1977 338.1'0973

76-608387

For sale by Superintendent of Documents, U.S. Government Printing Office, Washington, D.C. 20402, or any U.S. Department of Commerce district office. Postage stamps not acceptable; currency submitted at sender's risk. Remittances from foreign countries must be by international money order or by draft on a U.S. bank.

Stock Number 003-024-01371-1

REPORTS OF THE 1974 CENSUS OF AGRICULTURE

Preliminary Reports. Four pages of data published separately for each county having 10 farms or more, and for each State, the four geographic regions, and the United States. *The statistics printed in these reports are superseded by those in the final reports, Volumes I through IV.*

Volume I, State and County Data. One for each State, Puerto Rico, Guam, and the Virgin Islands, covering the area and its subdivisions. The reports for the States contain data for all farms and farms with sales of \$2,500 and over. *Chapter I* contains detailed data at the State level classified by size of farm, tenure and age of farm operator, type of organization, value of products sold, and major type of farm; *Chapter II*, county data summarized by subject; *Chapter III*, county data by subject for miscellaneous crop and livestock items found in relatively few counties; *Chapter IV*, county data by county.

Volume II, Statistics by Subject. Chapters containing total data for the United States, geographic regions and divisions, and States, for all farms and farms with sales of \$2,500 and over.

Volume III, Agricultural Services. Data by county for each State covering establishments whose primary activities are providing agricultural services. Data at the U.S., State, and county levels for all establishments are presented for selected four-digit standard industrial classification codes by size and type of organization. Data shown include dollar volume of business, gross receipts from products provided, gross receipts, labor and payroll by type of service performed, capital expenditures, and expenditures for electricity, gasoline, petroleum, and other fuels.

Volume IV, Special Reports.

Part 1. Graphic Summary. Profiles the Nation's agricultural system in a series of U.S. maps, a number of which are printed in color. The characteristics of America's farms in 1974 are illustrated for crops, livestock, and many other characteristics.

Part 2. Ranking Counties and States. Reports on the top ranking 100 counties and 10 States in descending order of importance for 88 selected items for 1974 with comparative data for 1969.

Part 3. Coverage Evaluation. Shows the completeness of the agriculture census for States, geographic divisions, and the United States. Data also show the characteristics of farms missed by value of sales and by selected standard industrial (type-of-farm) classifications. Sampling reliability of the estimate of coverage is shown by value of sales classifications.

Part 4. Procedural History. A comprehensive summary of the procedures used in conducting the 1974 Census of Agriculture in the 50 States, Puerto Rico, Guam, and the Virgin Islands. The history explains the procedures used from early planning and testing through tabulation and publication of the final reports.

CONTENTS

	Page
Introduction.	V
Summary.	VI
TABLE A. States Ranked by Agricultural Service Establishments: 1974 and 1969	VI
B. Leading States in Types and Number of Agricultural Service Establishments: 1974	VII
C. States Ranked by Gross Receipts for Agricultural Services: 1974 and 1969	VIII
D. Leading States in Percent of Annual Payroll for Agricultural Services: 1974 and 1969	IX
E. Average Gross Receipts and Annual Payroll for Agricultural Services by Type of Organization: 1974 and 1969	X
F. Leading Regions and States in Gross Receipts for Agricultural Service Activities: 1974	XI
G. Leading Agricultural Service Activities in Gross Receipts: 1974	XIII
CHART 1. Distribution of Gross Receipts for Agricultural Services in the United States: 1974.	VIII
2. Distribution of Establishments and Gross Receipts for Agricultural Services by Gross Receipts Size Class: 1974.	IX
3. Agricultural Service Establishments by Type of Organization: 1974	X
Map—Geographic Regions and Divisions of the United States.	XIV
Detailed Tables	
TABLE 1. Establishments, Receipts, and Payroll: 1974.	1
2. Labor and Payroll: 1974.	1
3. Supplemental Labor Cost: 1974.	2
4. Seasonal Variation of Employees Working During Pay Period Through 12th of Each Month: 1974	3
5. Establishments, Receipts, and Payroll, by Type of Organization: 1974	4
6. Establishments by Gross Receipts: 1974	5
7. Establishments by Number of Agricultural Service Activities Performed: 1974	5
8. Gross Receipts From Products Provided in Connection With Services Performed: 1974	6
9. Capital Expenditures and Gross Value of Depreciable Assets, by Type of Organization: 1974	7
10. Establishments and Receipts, by Activity: 1974	8
11. Establishments, Receipts, and Payroll, by States: 1974 and 1969.	9
12. Labor and Payroll, by States: 1974 and 1969	10
13. Seasonal Variation of Employees Working During Pay Period Through 12th of Each Month, by States: 1974	11
14. Establishments, Gross Receipts, and Payroll, by Type of Organization and by States: 1974 and 1969	12

CONTENTS Continued

Detailed Tables Continued		Page
TABLE 15.	Establishments by Gross Receipts and by States: 1974 and 1969 .	14
16.	Establishments by Number of Agricultural Service Activities Performed and by States: 1974 and 1969	15
17.	Cotton Ginning and Pickery Establishments and Gross Receipts: 1974 and 1969	15
18.	Establishments, Receipts, Payroll, and Supplemental Labor Costs, by SIC and by States: 1974	16
19.	Reporting Units and Receipts, by Activity: 1974.	30
20.	Establishments, Receipts, and Payroll, by Counties: 1974	50
21.	The 100 Leading Counties Ranked by Gross Receipts for Agricultural Services: 1974 and 1969	70
Appendixes		
A.	General Explanation	A-1
	1. Need for the Census	A-1
	2. Mailout and Receipt of Forms	A-1
	3. Processing.	A-1
	4. Coverage	A-1
	5. Definitions and Explanations	A-2
	6. Data Withheld From Publication.	A-8
B.	Report Form and Relevant Correspondence	B-1
C.	Standard Industrial Classification Manual, 1972, Pages 25-28. . .	C-1

INTRODUCTION

Authority, Area Covered, and History

The 1974 Census of Agricultural Services is the second such census taken for the United States. It was conducted as part of the 1974 Census of Agriculture, in accordance with the provisions of Title 13, United States Code, reaffirmed by section 818 of the Agriculture and Consumer Protection Act of 1973 (Public Law 93-86). Sections 142(a) and 191 of Title 13 provide for a periodic census of Agriculture in each State, the District of Columbia, Puerto Rico, Guam, and the Virgin Islands. The census of agricultural services was conducted primarily by mail, and covers each State and the District of Columbia.

Agricultural Service Establishment

The 1974 Census of Agricultural Services was conducted on an establishment basis, where "establishment" is defined according to the 1972 Standard Industrial Classification (SIC) Manual of the Office of Management and Budget, Executive Office of the President. For purposes of this census, an "agricultural service establishment" is an economic unit primarily engaged in performing for others on a fee or contract basis the following: Soil preparation services, crop services, farm labor and management services, and landscape and horticultural services. "Primarily engaged" means an establishment receives a greater amount of gross receipts for agricultural service activities than for any other SIC major group of activities in which the establishment is engaged.

A business concern or firm engaged in economic activities may consist of one or more establishments depending upon the size, location, and relationship of its component activities. This census covers only those establishments primarily

engaged in agricultural service activities. Note that agricultural services are often performed as a secondary activity by other establishments. For example, sorting, packing, and shipping services are frequently performed by establishments which are primarily engaged in hauling (classified in SIC 42—Motor and freight transportation and hauling), and custom grain grinding and milling are sometimes performed by establishments manufacturing prepared feed. Many farm and ranch operators also perform agricultural services for others on a contract or fee basis as a secondary activity. Secondary activities were excluded from this census.

Scope of the Census

The 1974 Census of Agricultural Services was designed to cover the 1974 operations of all agricultural service establishments operating in the United States at the beginning of the year. The data were collected from establishments primarily engaged in performing agricultural services. For a few cases in which respondents' records were kept on a fiscal year basis, data reported for fiscal year 1973-74 were used. Report form 74-A40 was used for all establishments (see appendix B). The census was conducted on a mailout/mailback basis, a method that gives the respondent the opportunity to complete the report more nearly at his own convenience than in an enumerator-type census. Results from other censuses have shown that, in general, the quality of data on reports completed by operators exceeds that of reports filled out by enumerators.

Comparability of Data

The 1969 Census of Agricultural Services was designed to include all agricultural service establishments, but coverage was

less than desired because the census was the first of its kind. As a result of experience and a better mail list, coverage in the 1974 Census of Agricultural Services was more extensive. Changes in the kind-of-business classifications described in the 1972 SIC Manual also affects the comparability of data between 1969 and 1974. For example in 1969, establishments engaged primarily in hatching poultry for their own account or on a contract basis and cattle feed lots operated on a contract or custom basis were classified as agricultural service establishments according to the 1967 SIC manual. In 1974, however, these establishments were classified as farms according to the 1972 SIC manual. Consequently, care should be taken in comparing data shown for the two years.

Reliability of Data

The completed forms were clerically reviewed, keyed to magnetic tape, and then checked by computer for internal consistency. Significant omissions and inconsistencies were resolved by contacting the respondent (by telephone or letter) or by comparison with similar reports. Most of the larger establishments provided the information requested with little apparent difficulty. However, small and medium-sized establishments sometimes found it difficult to specify certain items, especially capital expenditures, depreciable assets, and expenditures for utilities and fuel.

Abbreviations and Symbols

The following abbreviations and symbols are used throughout the tables:

- Represents zero.
- X Not applicable.
- D Data withheld to avoid disclosing information for individual establishments.

SUMMARY

This section summarizes the data tabulated for the 1974 Census of Agricultural Services. It deals specifically with the number of agricultural service establishments in the United States in 1974 and their gross receipts, labor, and annual payroll for agricultural service activities.

Number of Establishments

The statistics compiled for this census represent a total of 61,347 agricultural service establishments. The number of establishments in each State are reported in table A.

For this census, agricultural service establishments are categorized into six standard industrial classification major (three-digit) groups for presentation and tabulation. The approximate percentage of establishments in each group is:

1. Landscape and horticultural services
(SIC code 078) 55 percent
2. Animal services, except veterinary services
(SIC code 075) 17 percent
3. Veterinary services
(SIC code 074) 17 percent

4. Crop services
(SIC code 072) 8 percent
5. Farm labor and management services
(SIC code 076) 2 percent
6. Soil preparation services
(SIC code 071) 1 percent

The six major groups are further broken down into 14 census establishment types. Lawn and garden service establishments (SIC code 0782) predominate, totaling 74.2 percent of the landscape and horticultural services group (SIC code 078) and 40.7 percent of the

Table A. States Ranked by Agricultural Service Establishments: 1974 and 1969

State	Establishments		Rank		State	Establishments		Rank	
	1974	1969	1974	1969		1974	1969	1974	1969
California	15 662	4 375	1	1	Louisiana	595	397	27	29
New York	4 112	2 182	2	2	Oklahoma	587	449	28	25
Florida	3 506	2 056	3	4	Arkansas	580	384	29	30
Texas	2 941	2 174	4	3	Tennessee	551	491	30	21
Ohio	2 488	1 494	5	7	Mississippi	516	372	31	31
Pennsylvania	2 483	1 499	6	5	Alabama	507	405	32	26
New Jersey	2 241	1 076	7	8	South Carolina	478	315	33	34
Illinois	2 057	1 495	8	6	Kentucky	455	316	34	33
Michigan	1 703	1 006	9	9	Rhode Island	293	141	35	38
Massachusetts	1 549	715	10	13	New Hampshire	274	111	36	44
Connecticut	1 262	576	11	19	Idaho	270	176	37	36
Washington	1 177	646	12	17	New Mexico	264	151	38	37
Missouri	1 139	759	13	11	Maine	257	140	39	39
Wisconsin	1 056	720	14	12	Hawaii	255	77	40	47
Indiana	1 036	674	15	15	South Dakota	244	241	41	35
Georgia	1 033	614	16	18	West Virginia	217	119	42	43
North Carolina	996	692	17	14	Utah	212	121	43	42
Iowa	974	1 002	18	10	Montana	193	135	44	40
Virginia	910	476	19	22	North Dakota	181	123	45	41
Arizona	891	369	20	32	Nevada	164	68	46	49
Maryland	847	400	21	27	Vermont	160	80	47	46
Colorado	813	470	22	23	Delaware	149	87	48	45
Minnesota	781	655	23	16	Wyoming	94	77	49	48
Oregon	760	400	24	28	Alaska	43	12	50	51
Kansas	745	553	25	20	District of Columbia . . .	42	36	51	50
Nebraska	604	463	26	24					

SUMMARY Continued

U.S. total. Next are animal speciality services for dogs, cats, horses, bees, fish, rabbits, other fur-bearing animals, birds except poultry, and other pets (SIC code 0752), which make up 87.2 percent of the animal services except veterinary group (SIC code 075) and 14.9 percent of the U.S. total.

Table B shows the leading States in number of establishments for individual establishment types or combinations of establishment types, and the corresponding percentages of the U.S. totals for each type.

There is little difference between the distribution of establishments according to gross receipts in the United States and that in the individual geographic regions—North, South, and West. The West has a slightly higher concentration of establishments in the "less than \$10,000"

class and a lower concentration in the classes between \$10,000 and \$100,000.

The distribution by States of gross receipts for agricultural services is shown in chart 1. Table C shows the States ranked by gross receipts.

Of the six groups of agricultural service establishments, landscape and horticultural services account for about 38 percent of the agricultural services industry, veterinary services for 24 percent, and crop services for 20 percent.

Together, soil preparation services, animal services (except veterinary), and farm labor and management services represent about 18 percent of the total.

Lawn, garden, shrub, tree, and tree trimming service is the census establishment type with the largest proportion of gross receipts. It accounts for about 92 percent of all receipts from landscape and

horticultural services, and about 35 percent of the U.S. total. Veterinarians for small animals and animal hospitals is second in gross receipts, accounting for 75 percent of all receipts from veterinary services and 18 percent of the U.S. total.

Gross Receipts

Gross receipts from agricultural service establishments in the United States in 1974 totaled nearly 3.55 billion dollars, an average of about 58,000 dollars per establishment. The median amount per establishment is approximately 26,000 dollars. When distributed by gross receipts size classes, the greatest concentration of establishments is in the "less than \$10,000" size class, totaling 40.6 percent of all establishments; the greatest concentration of gross receipts is in the

Table B. Leading States in Type and Number of Agricultural Service Establishments: 1974

SIC code	Type of establishment	States ranked by number of establishments					
		First State		Second State		Third State	
		Name	Percent of U.S. total	Name	Percent of U.S. total	Name	Percent of U.S. total
0711	Soil preparation services	California	13.0	Texas	11.6	Illinois	8.1
0721	Planting, cultivating, and protection	California	13.2	Texas	12.0	Florida	6.5
0722	Harvesting, primarily by machine	California	17.3	Texas	16.8	Kansas	10.2
0723	Preparation for market	California	22.8	Iowa	6.9	Florida	6.2
0724	Cotton Ginning	Texas	28.1	Mississippi	12.5	Arkansas	11.8
0729	General crop services	(¹)	(¹)	(¹)	(¹)	(¹)	(¹)
0741	Veterinary services for cattle, hogs, sheep, goats, and poultry	Iowa	10.0	Texas	7.1	Wisconsin	5.8
0742	Veterinary services for dogs, cats, horses, bees, fish, rabbits, other fur-bearing animals, birds (except poultry), and other pets	California	13.9	New York	6.5	Texas	6.2
0751	Animal services for cattle, hogs, sheep, goats, and poultry	California	9.4	Wisconsin	6.7	Texas	6.5
0752	Animal services for dogs, cats, horses, bees, fish, rabbits, other fur-bearing animals, birds (except poultry), and other pets	California	17.7	New York	8.7	Florida	5.8
0761	Farm labor contractors and crew leaders	Florida	36.9	California	35.3	Texas	12.1
0762	Farm management services (complete maintenance and management	Florida	45.6	California	24.2	Texas	9.2
0781	Landscape counseling and planning	California	24.6	New York	7.2	Florida	5.1
0782	Lawn and garden services	California	41.0	New York	7.9	Florida	6.4
0783	Ornamental shrub and tree services	California	14.0	New York	7.8	Pennsylvania	6.2

¹ Only 4 establishments of this type were reported in the United States. These were in Illinois, Kansas, New Mexico, and Texas.

SUMMARY Continued

Chart 1. Distribution of Gross Receipts for Agricultural Services in the United States: 1974

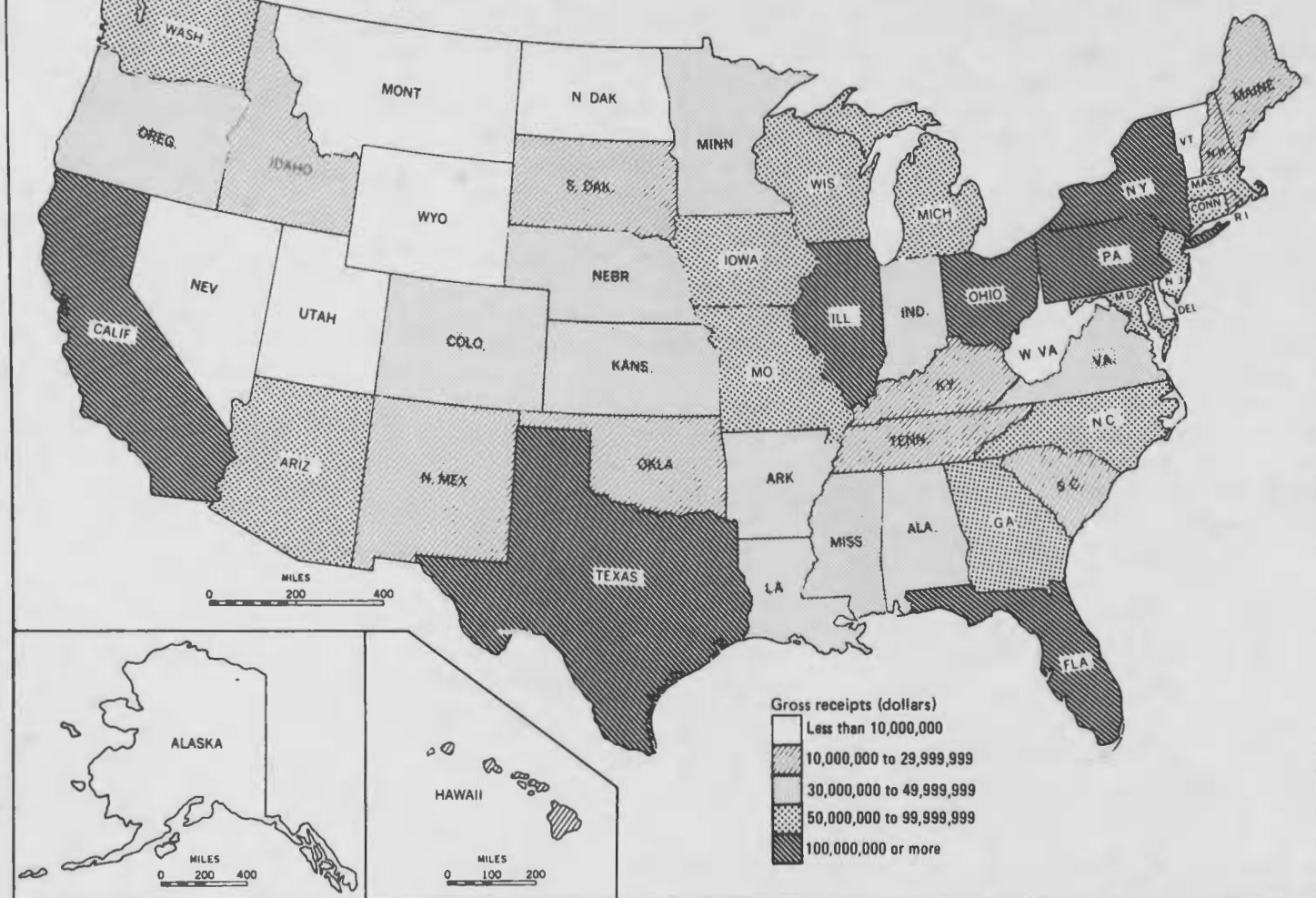


Table C. States Ranked by Gross Receipts for Agricultural Services: 1974 and 1969

State	Gross receipts		Rank		State	Gross receipts		Rank	
	1974	1969	1974	1969		1974	1969	1974	1969
California	824 965 737	299 804 538	1	1	Georgia	58 024 957	32 633 132	15	18
Florida	359 249 558	171 048 189	2	3	Missouri	55 068 144	34 991 330	16	16
Pennsylvania	209 055 979	125 766 215	3	4	Connecticut	54 364 016	25 913 995	17	25
New York	207 672 726	123 602 203	4	5	Iowa	52 687 905	39 431 222	18	14
Texas	183 490 410	206 239 151	5	2	North Carolina	52 492 732	33 094 952	19	17
Ohio	143 476 812	104 971 310	6	6	Virginia	48 541 489	23 367 026	20	30
Illinois	102 675 073	80 791 871	7	7	Colorado	48 339 527	27 942 249	21	23
New Jersey	99 821 742	48 587 396	8	11	Arkansas	44 362 814	24 541 570	22	28
Michigan	91 751 661	57 222 855	9	8	Indiana	44 342 292	30 578 193	23	19
Arizona	82 686 743	49 892 243	10	10	Minnesota	43 782 083	28 636 375	24	21
Washington	72 390 589	45 380 523	11	13	Mississippi	41 840 305	24 831 151	25	26
Massachusetts	66 406 941	37 634 172	12	15	Louisiana	41 549 298	23 615 208	26	29
Maryland	63 268 277	30 116 410	13	20	Oregon	39 376 146	24 800 553	27	27
Wisconsin	62 442 305	46 925 527	14	12	Kansas	32 735 491	57 077 349	28	9

SUMMARY Continued

Table C. States Ranked by Gross Receipts for Agricultural Services: 1974 and 1969—Continued

State	Gross receipts		Rank		State	Gross receipts		Rank	
	1974	1969	1974	1969		1974	1969	1974	1969
Nebraska	32 627 580	20 613 911	29	32	New Hampshire . . .	10 155 969	12 168 977	41	36
Alabama	31 671 676	26 806 417	30	24	West Virginia	8 901 072	4 286 877	42	45
Kentucky	27 904 879	19 165 732	31	33	Delaware	8 709 061	4 267 093	43	46
Oklahoma	25 423 945	28 415 841	32	22	Vermont	8 676 120	3 178 645	44	48
Tennessee	24 904 347	22 028 174	33	31	Nevada	8 326 460	5 129 930	45	43
South Carolina . . .	24 226 101	11 905 034	34	37	Montana	8 247 341	7 191 387	46	41
Idaho	19 859 280	12 331 657	35	35					
New Mexico	15 862 504	13 772 760	36	34	North Dakota	7 861 217	3 911 143	47	47
Hawaii	15 355 115	4 340 372	37	44	Utah	6 893 073	7 280 236	48	40
Maine	12 003 541	8 217 594	38	38	Wyoming	3 274 516	3 042 773	49	49
South Dakota	11 692 164	7 843 079	39	39	District of Columbia	3 492 272	2 979 163	50	50
Rhode Island	10 309 701	5 346 083	40	42	Alaska	1 747 045	419 850	51	51

"\$100,000 to \$499,999" size class, totaling 39.3 percent of all establishments. Chart 2 shows the percentage distribution of all establishments and the distribution of agricultural services by gross receipts size class.

Labor and Annual Payroll

The annual payroll for agricultural services during 1974 totaled over \$1.2 billion. This amount covers about 160,000 paid employees working 150 days or more and

about 340,000 working less than 150 days. The total number of unpaid workers includes almost 30,000 working 150 days or more and over 20,000 working less. Some of the persons working less than 150 days during 1974 may have been reported by two establishments or more. Therefore, the total number of persons engaged in agricultural service work for these establishments during 1974 is probably somewhat less than the total of 550,000.

Twenty-five States reporting an annual payroll for agricultural services of \$1.05

billion account for 87 percent of the U.S. total. Their relative share of the U.S. agricultural services payroll is shown in table D.

The census establishment group landscape and horticulture services (SIC code 078) had the largest proportion (40 percent) of annual payroll in the agricultural service industry. Veterinary services (SIC code 074) was second in proportion with 22 percent, while crop services (SIC code 072) was third with 16 percent. Following were farm labor and management services (SIC code 076), 14 percent; animal serv-

Chart 2. Distribution of Establishments and Gross Receipts for Agricultural Services by Gross Receipts Size Class: 1974

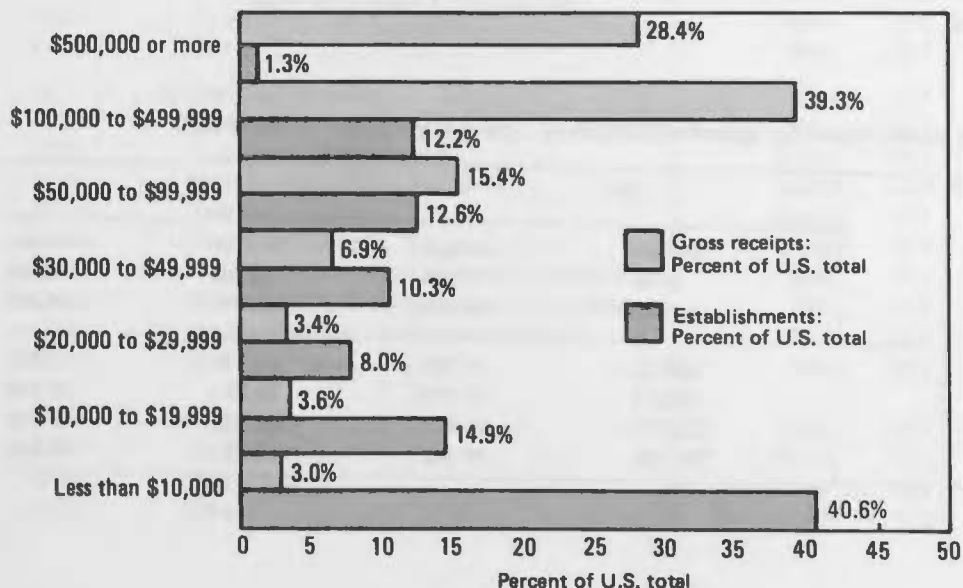


Table D. Leading States in Percent of Annual Payroll for Agricultural Services: 1974 and 1969

State	Percent of annual payroll	
	1974	1969
United States, total . .	100	100
California	23.2	18.0
Florida	11.8	11.5
Pennsylvania	8.2	9.6
New York	6.0	6.9
Texas	4.8	6.5
Ohio	4.6	5.3
Illinois	2.6	3.5
New Jersey	2.6	2.6
Arizona	2.5	2.3
Michigan	2.5	2.7
Massachusetts	2.1	2.2

SUMMARY Continued

ices (SIC code 075), except veterinary, 7 percent; and soil preparation services (SIC code 071), 1 percent.

Farm management and labor services (SIC code 078) had the largest proportion (32 percent) of paid employees classified by census establishment type. Landscape and horticulture services (SIC code 076) had the second largest proportion with 29 percent, followed by crop services (SIC code 072) with 22 percent.

The combined total for veterinary services; animal services, except veterinary; and soil preparation services represents 17 percent of the U.S. total.

Type of Organization

Agricultural service establishments are classified by four types of organization: individual proprietorships, partnerships, corporations, and other. Chart 3 presents a comparison of these types by number of agricultural service establishments, gross receipts, and payroll.

Individual proprietorships account for 79 percent of the agricultural service establishments. While this is a high proportion of all establishments, individual proprietorships account for only 39 percent of the gross receipts and 27 percent of the annual payroll. On the other hand, corporations account for only 13 percent of the establishments but 49 percent of the gross receipts and 63 percent of the annual payroll.

The average gross receipts and annual payroll for agricultural services for the four types of organization are shown in table E.

Agricultural Service Activities

The geographic distribution of gross receipts for each agricultural service activity and the corresponding percentages of

activity totals are shown in table F for the leading regions and States.

The 20 leading activities of service establishments, by gross receipts as percentages of the agricultural services total for the United States, are shown in table G. These 20 activities represent nearly 89 percent of the gross receipts for agricultural services performed by agricultural service establishments in the United States during 1974.

Chart 3. Agriculture Service Establishments by Type of Organization: 1974

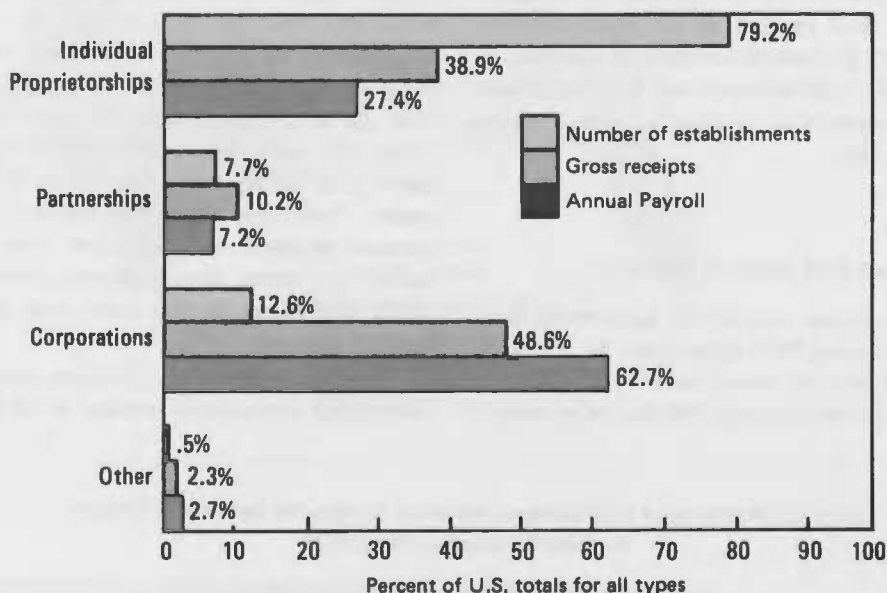


Table E. Average Gross Receipts and Annual Payroll for Agricultural Services by Type of Organization: 1974 and 1969

Type of organization	1974		1969	
	Average gross receipts	Average annual payroll	Average gross receipts	Average annual payroll
Individual proprietorship.	28 472	6 797	31 306	7 523
Partnership.	76 831	18 293	95 931	20 945
Corporation.	223 770	98 039	266 602	86 220
Other.	244 538	99 232	170 177	76 308

SUMMARY Continued

Table F. Leading Regions and States in Gross Receipts for Agricultural Service Activities: 1974

SIC and census code	Agricultural service activity	Leading regions		Leading States			
				First State		Second State	
		Name	Percent of U.S. total	Name	Percent of U.S. total	Name	Percent of U.S. total
07	Agricultural services.	(X)	100	(X)	100	(X)	100
071	Soil preparation services.	South	36.4	California	21.6	Texas	10.3
07111	Plowing or land breaking.	West	53.1	California	43.3	Texas	17.8
07112	Harrowing or seed bed preparation.	West	39.3	California	31.3	Virginia	16.8
07113	Fertilizer and lime spreading before planting.	South	38.9	California	15.9	Illinois	7.9
07114	Weed control before planting.	North	45.1	California	19.5	Iowa	12.7
07119	Other.	South	44.7	California	24.6	Texas	23.0
072	Crop services.	West	52.6	California	38.7	Texas	10.5
0721	Planting, cultivating, and protection.	South	43.9	California	25.1	Texas	13.1
07211	Planting with or without fertilizer.	West	62.6	California	58.8	Louisiana	11.4
07212	Fertilizer spreading (only) after planting.	South	47.3	California	29.2	Texas	16.6
07213	Aerial dusting and spraying for disease and insect control with or without fertilizer.	South	47.6	California	20.8	Texas	15.1
07214	On-ground dusting and spraying for disease and insect control with or without fertilizer.	West	67.0	California	56.4	Texas	9.0
07215	Weed control after planting.	North	40.6	California	14.9	Iowa	11.5
07216	Citrus grove cultivation or maintenance.	South	71.5	Florida	71.2	California	27.2
07217	Cultivation, mechanical and flame, other than citrus grove.	West	76.1	California	66.6	Mississippi	8.8
07218	Pruning of orchards or vineyards.	West	75.3	California	61.2	Vermont	12.9
07219	Other.	West	45.1	California	39.5	Mississippi	11.0
0722	Harvesting, primarily by machine.	West	61.5	California	44.2	Texas	8.3
07221	Corn for all purposes.	West	54.8	California	26.5	Colorado	22.5
07222	Wheat or other small grains (combining).	West	41.7	California	27.9	Kansas	20.2
07223	Cotton.	West	76.8	California	64.5	Arizona	12.1
07224	Fruits or berries.	West	56.8	California	48.2	Florida	24.5
07225	Vegetables.	West	76.6	California	70.6	Arkansas	8.3
07226	Soybeans, other beans, peas, or peanuts.	West	51.4	Oregon	19.1	Colorado	18.0
07227	Hay (mowing, raking, baling, or chopping).	West	76.2	California	50.6	Texas	9.5
07228	Tobacco.	South	100	North Carolina	57.1	South Carolina	31.2
07229	Other.	West	59.4	California	43.5	Florida	20.1
0723	Preparation for market.	West	64.5	California	50.3	Florida	13.9
07231	Corn shelling or drying.	North	97.3	Pennsylvania	35.2	Iowa	31.3
07232	Crop drying other than corn.	South	83.1	Louisiana	31.1	Texas	28.2
07233	Grain grinding, milling, and mixing.	North	58.0	North Carolina	9.9	Illinois	9.3
07234	Bean or grain cleaning.	South	41.9	Texas	15.9	Idaho	12.6
07235	Cotton seed delinting.	South	86.7	Texas	43.3	Mississippi	23.9
07236	Packaging fresh or farm-dried fruits or vegetables.	West	75.8	California	64.0	Florida	18.2
07237	Sorting, grading, or packing of fruits or berries.	West	82.2	California	66.7	Florida	15.1
07238	Sorting, grading, or packing of vegetables.	West	58.0	California	35.4	Florida	27.7
07239	Other.	West	73.2	California	54.9	Arizona	11.6
0724	Cotton ginning.	South	61.5	California	26.1	Texas	22.2
07241	Cotton ginning.	South	61.5	California	26.1	Texas	22.3
07242	Cotton pickery.	West	59.2	Arizona	59.2	Mississippi	37.7
07249	Other.	South	100	Mississippi	81.9	Texas	18.1

SUMMARY Continued

Table F. Leading Regions and States in Gross Receipts for Agricultural Service Activities: 1974—Continued

SIC and census code	Agricultural service activity	Leading regions		Leading States			
				First State		Second State	
		Name	Percent of U.S. total	Name	Percent of U.S. total	Name	Percent of U.S. total
074	Veterinary services	North	49.0	California	14.1	New York	6.9
0741	Cattle, hogs, sheep, goats, and poultry	North	60.8	Iowa	10.1	Wisconsin	6.5
07411	Professional services	North	61.7	Iowa	10.5	Wisconsin	6.8
07412	Hospital care	North	41.3	Texas	14.0	Maryland	8.5
07413	Artificial insemination	North	41.8	Illinois	11.3	Michigan	9.8
07419	Other	North	52.5	Texas	20.0	Illinois	13.6
0742	Dogs, cats, horses, bees, fish, rabbits, other fur-bearing animals, birds (except poultry), and other pets	North	45.3	California	16.7	New York	7.5
07421	Professional services	North	45.6	California	16.8	New York	7.5
07422	Hospital care	North	43.8	California	15.7	New York	8.1
07423	Artificial insemination	South	49.6	California	26.8	Oklahoma	24.6
07429	Other	North	39.8	California	13.3	Ohio	8.9
075	Animal services, except veterinary	North	46.5	California	16.0	New York	10.0
0751	Cattle, hogs, sheep, goats, and poultry	North	55.3	California	15.1	Wisconsin	13.9
07511	Artificial insemination and breeding, except by veterinarians	North	82.9	Wisconsin	38.4	New York	16.8
07512	Dairy herd improvement associations (milk testing for butterfat)	North	70.6	New York	28.3	California	12.5
07513	Pedigree record services	North	69.7	Vermont	45.1	Texas	29.6
07514	Slaughtering for individuals	North	47.7	Texas	13.4	Ohio	10.3
07515	Sheep dipping and shearing	South	36.2	California	15.3	Missouri	13.0
07516	Livestock vaccinating, except by veterinarians	South	49.1	California	26.0	North Carolina	15.2
07517	Poultry services	South	73.7	Arkansas	33.2	Georgia	10.4
07519	Other	West	57.2	California	46.2	Colorado	7.7
0752	Dogs, cats, horses, bees, fish, rabbits, other fur-bearing animals, birds (except poultry), and other pets	North	42.5	California	16.5	Florida	11.8
07521	Artificial insemination and breeding, except by veterinarians	South	47.2	Florida	23.9	Pennsylvania	13.4
07522	Boarding, showing, or training of horses, including race horses	South	39.6	California	17.1	Florida	13.9
07523	Boarding, showing, training, or grooming of dogs and cats	North	47.8	California	17.0	Florida	7.6
07524	Pedigree record services	West	69.3	Colorado	51.2	California	17.8
07529	Other	North	45.7	California	14.1	Florida	11.0
076	Farm labor and management services	South	49.1	Florida	45.5	California	42.3
0761	Farm labor contractors and crew leaders	West	61.6	California	54.6	Florida	34.4
07611	Farm labor contractors	West	64.0	California	56.6	Florida	35.2
07612	Crew leaders	South	76.7	Florida	60.5	California	20.7
0762	Farm management services (complete maintenance and management)	South	61.0	Florida	57.0	California	29.5
07621	Citrus grove	South	85.0	Florida	79.5	California	9.2
07622	Orchard or vineyard	West	99.8	California	98.4	Washington	1.0
07629	Other	North	48.6	California	39.7	Missouri	14.5

SUMMARY Continued

Table F. Leading Regions and States in Gross Receipts for Agricultural Service Activities: 1974—Continued

SIC and census code	Agricultural service activity	Leading regions		Leading States			
				First State		Second State	
		Name	Percent of U.S. total	Name	Percent of U.S. total	Name	Percent of U.S. total
078	Landscape and horticultural services	North	52.4	California	18.4	Pennsylvania	11.5
0781	Landscape counseling and planning	West	38.0	California	27.8	New York	8.2
07811	Landscape architects	West	39.3	California	31.0	Pennsylvania	6.6
07812	Landscape counseling or planning	North	36.0	California	22.0	Florida	6.5
0782	Lawn and garden services	North	46.9	California	24.2	New York	9.4
07821	Lawn or garden services including planting, mowing, spraying, fertilizing, etc.	North	46.7	California	24.3	New York	9.4
07822	Cemetery upkeep or mowing highway center strips and edges, independent	North	56.1	California	19.8	New York	10.9
0783	Ornamental shrub and tree services	North	60.1	Pennsylvania	19.1	California	1.7
07831	Shrub and tree services, including planting, fertilizing, spraying, trimming, and surgery, except for public utility lines	North	53.3	California	14.2	New York	9.7
07832	Tree trimming for public utility lines, independent	North	73.5	Pennsylvania	44.5	Ohio	13.7

Table G. Leading Agricultural Service Activities in Gross Receipts: 1974

Census code	Agricultural service activity	Dollars	Percent of gross receipts	Census code	Agricultural service activity	Dollars	Percent of gross receipts
07821	United States, total.	3 554 986 731	100.0	07621	Citrus grove	101 616 138	2.9
	Lawn or garden services including planting, mowing, spraying, fertilizing, etc.	599 466 142	16.9	07236	Packaging fresh or farm-dried fruits or vegetables.	92 984 843	2.6
07421	Professional services.	585 457 355	16.5	07237	Sorting, grading, or packing of fruits or berries.	91 196 176	2.6
07831	Shrub and tree services, including planting, fertilizing, spraying, trimming, and surgery, except for public utility lines	418 139 822	11.8	07523	Boarding, showing, training, or grooming of dogs and cats	78 035 779	2.2
07832	Tree trimming for public utility lines, independent	210 826 754	5.9	07811	Landscape architects	66 307 945	1.9
07411	Professional services.	192 361 876	5.4	07422	Hospital care	64 174 965	1.8
07241	Cotton ginning.	162 241 321	4.7	07238	Sorting, grading, or packing of vegetables.	47 588 474	1.3
07611	Farm labor contractors	140 749 590	4.0	07239	Other market preparation services.	40 992 732	1.2
07522	Boarding, showing, or training of horses, including race horses	109 509 872	3.1	07812	Landscape counseling or planning	37 164 978	1.0
07213	Aerial dusting and spraying for disease and insect control with or without fertilizer.	105 499 796	3.0	07511	Artificial insemination and breeding, except by veterinarians	29 523 400	.8
				07622	Orchard or vineyard.	27 857 055	.8
					All other activities.	353 291 718	11.2

GEOGRAPHIC REGIONS AND DIVISIONS OF THE UNITED STATES

