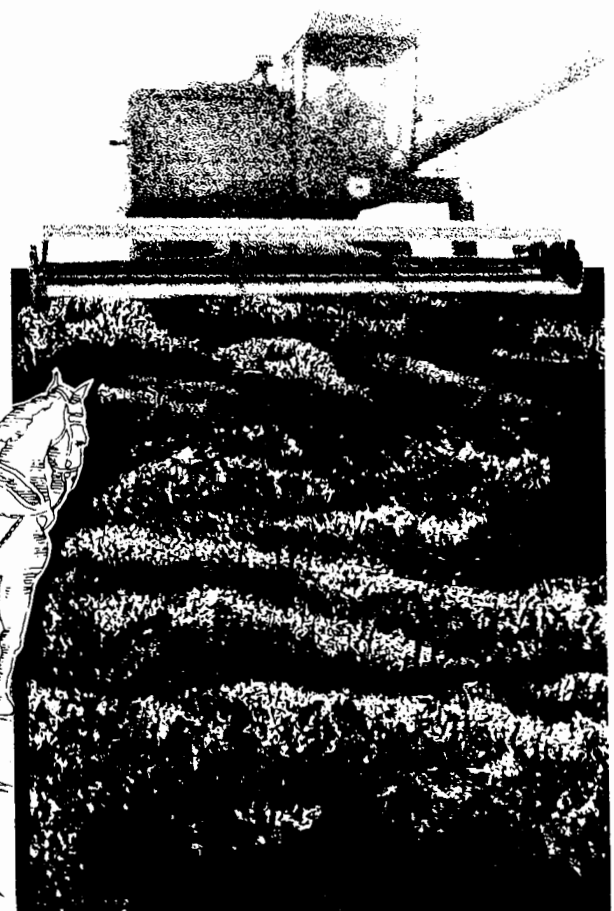
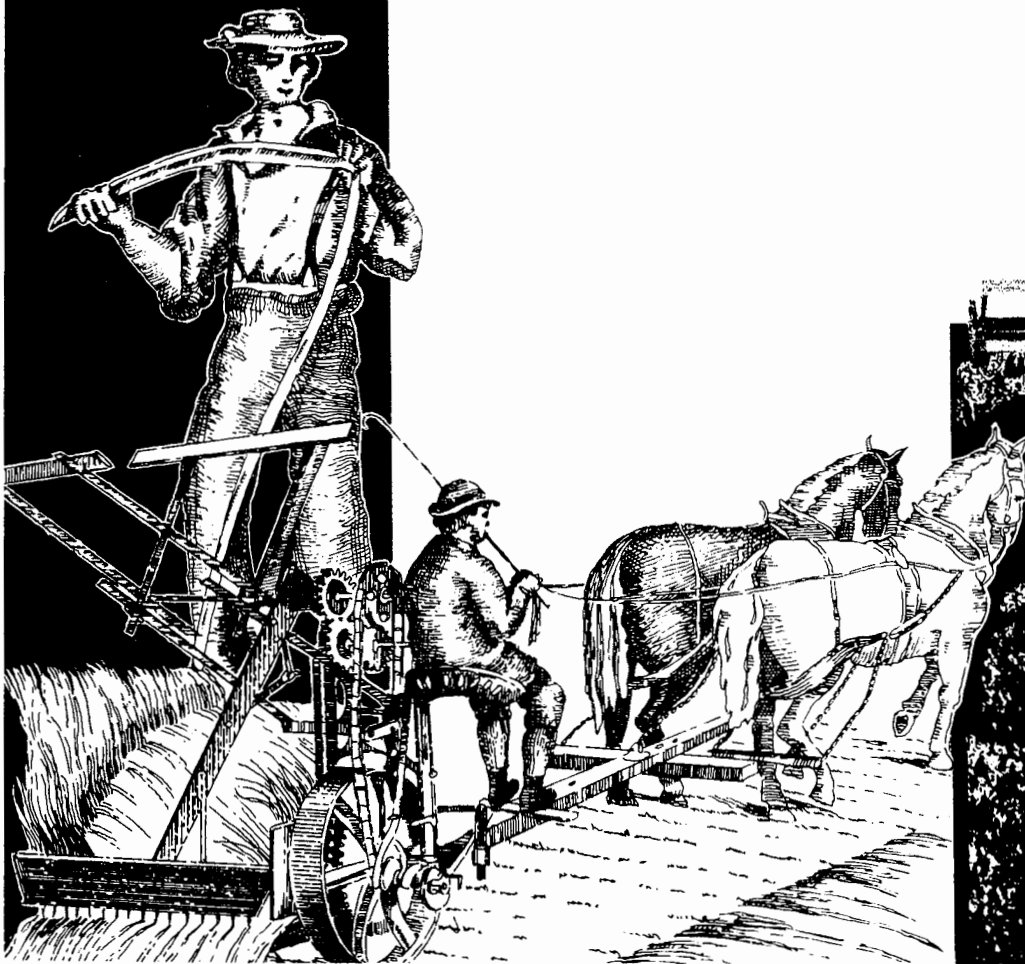


1974 Census of Agriculture

U.S. Department of Commerce
BUREAU OF THE CENSUS

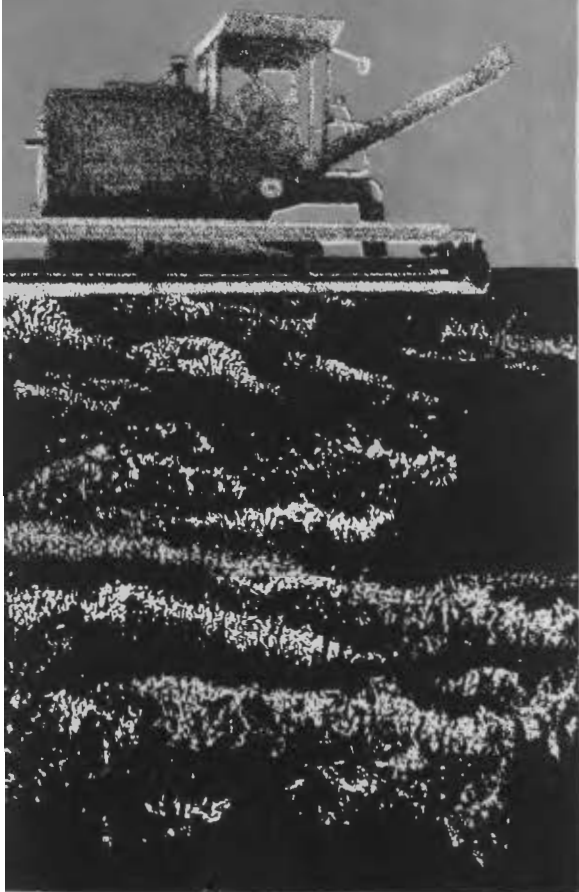
Volume I Parts 53 and 54
**Guam and
Virgin Islands
of the
United States**



1974
Census
of
Agriculture

Volume I Part 53

Guam



Issued March 1977



U.S. Department of Commerce
Juanita M. Kreps, Secretary

BUREAU OF THE CENSUS
Robert L. Hagan, Acting Director

BUREAU OF THE CENSUS

Robert L. Hagan, Acting Director
Shirley Kallek, Associate Director for Economic Fields

AGRICULTURE DIVISION

Orvin L. Wilhite, Chief

ACKNOWLEDGMENTS—Many persons participated in the various activities of the 1974 Census of Agriculture. Primary direction was by Shirley Kallek, Associate Director for Economic Fields. Her predecessor, James W. Turbitt, now Associate Director for Administration and Field Operations, directed the early stages of planning for the census.

This report was prepared in the Agriculture Division under the general supervision of J. Thomas Breen, Chief (to February 1976), and Orvin L. Wilhite, his successor. Kenneth R. Norell, Assistant Chief for Special Surveys, participated in overall planning and supervised the preparation of instructions for office processing and training materials, the development of enumeration procedures, and the technical review of the statistics prior to publication. Hector Vila, Chief, Outlying Areas Statistical Branch, made significant contributions in the overall planning, the preparation of instructions and training materials for the enumeration, and the handling of technical problems associated with office processing. The manual processing of the questionnaires and tables was performed by Alice Brown, Pura Lopez, Lidia Walters, and Lola Grassl. William Perry was responsible for preparing the tables.

The census data were collected at the direction of the Governor of Guam, the Honorable Ricardo J. Bordallo. The actual collection of the data was carried out by census enumerators under the direct responsibility of Joseph T. Flores, Census Project Manager, and two supervisors.

Forms design was accomplished under the general supervision of Cecil B. Matthews, Chief,

Administrative Services Division (to September 1975), and Henry J. Husmann, his successor, assisted by Gladys S. Potts and Cathern S. Kline.

Within the Publications Services Division, many individuals made significant contributions in the areas of publication planning and design, editorial review, composition, and printing procurement.

Special acknowledgment is made to the many farmers and members of their families who furnished the information.

Library of Congress Cataloging in Publication Data

United States. Bureau of the Census.
1974 census of agriculture.

CONTENTS: v. 1. State reports. v.—v. 2. Statistics by subject. v.—v. 3. Agricultural services. v.—v. 4. Special reports. v.

1. Agriculture—Economic aspects—United States—Statistics—Collected works. I. Title. II. Title: Census of agriculture.

HD1753 1974.B87 1977 338.1'0973

76-608387

For sale by Superintendent of Documents, U.S. Government Printing Office, Washington, D.C. 20402, or any U.S. Department of Commerce district office. Postage stamps not acceptable; currency submitted at sender's risk. Remittances from foreign countries must be by international money order or by draft on a U.S. bank. Price \$0.00. S/N 003-024-01365-7

REPORTS OF 1974 CENSUS OF AGRICULTURE

Preliminary Reports. Four pages of data published separately for each county having 10 farms or more, and for each State, the four geographic regions, and the United States. *The statistics printed in these reports are superseded by those in the final reports, Volumes I through IV.*

Volume I. State and County Data. One for each State, Puerto Rico, Guam, and the Virgin Islands, covering the area and its subdivisions. The reports for the States contain data for all farms and farms with sales of \$2,500 and over. Chapter I contains detailed data at the State level classified by size of farm, tenure and age of farm operator, type of organization, value of products sold, and major type of farm; Chapter II, county data summarized by subject; Chapter III, county data by subject for miscellaneous crop and livestock items found in relatively few counties; Chapter IV, county data by county.

Volume II. Statistics by Subject. Chapters containing total data for the United States, geographic regions and divisions, and States, for all farms and farms with sales of \$2,500 and over.

Volume III. Agricultural Services. Data by county for each State covering establishments whose primary activities are providing agricultural services. Data at the U.S., State, and county levels for all establishments are presented for selected four-digit standard industrial classification codes by size and type of organization. Data shown include dollar volume of business, gross receipts from products provided, gross receipts, labor and payroll by type of service performed, capital expenditures, and expenditures for electricity, gasoline, petroleum, and other fuels.

Volume IV. Special Reports.

Part 1. Graphic Summary. Profiles the Nation's agricultural system in a series of U.S. maps, a number of which are printed in color. The characteristics of America's farms in 1974 are illustrated for crops, livestock, and many other characteristics.

Part 2. Ranking Counties and States. Reports on the top ranking 100 counties and 10 States in descending order of importance for 88 selected items for 1974 with comparative data for 1969.

Part 3. Coverage Evaluation. Shows the completeness of the agriculture census for States, geographic divisions, and the United States. Data also show the characteristics of farms missed by value of sales and by selected standard industrial (type-of-farm) classifications. Sampling reliability of the estimate of coverage is shown by value of sales classifications.

Part 4. Procedural History. A comprehensive summary of the procedures used in conducting the 1974 Census of Agriculture in the 50 States, Puerto Rico, Guam, and the Virgin Islands. The history explains the procedures used from early planning and testing through tabulation and publication of the final reports.

CONTENTS

	Page
Map	IV
Introduction.	V

SUMMARY DATA

TABLE 1. Farms and Land in Farms, by Land Use: 1975 and 1970.	1
2. Summary by Size of Farm: 1975 and 1970	1
3. Summary by Tenure of Operator: 1975 and 1970	7
4. Vegetables and Field Crops: 1964 to 1975.	12
5. Fruits and Nuts: 1964 to 1975.	13
6. Livestock, Poultry, and Fish: 1964 to 1975	14
7. Mechanical and Animal Power, by Ownership and Size of Farm: 1975 and 1970	14
8. Mechanical and Animal Power, by Ownership and Tenure of Operator: 1975 and 1970	15
9. Farm Location, Labor Status, Specified Facilities, Type of Holding, and Source of Financing, by Size of Farm: 1975.	16

ELECTION DISTRICT DATA

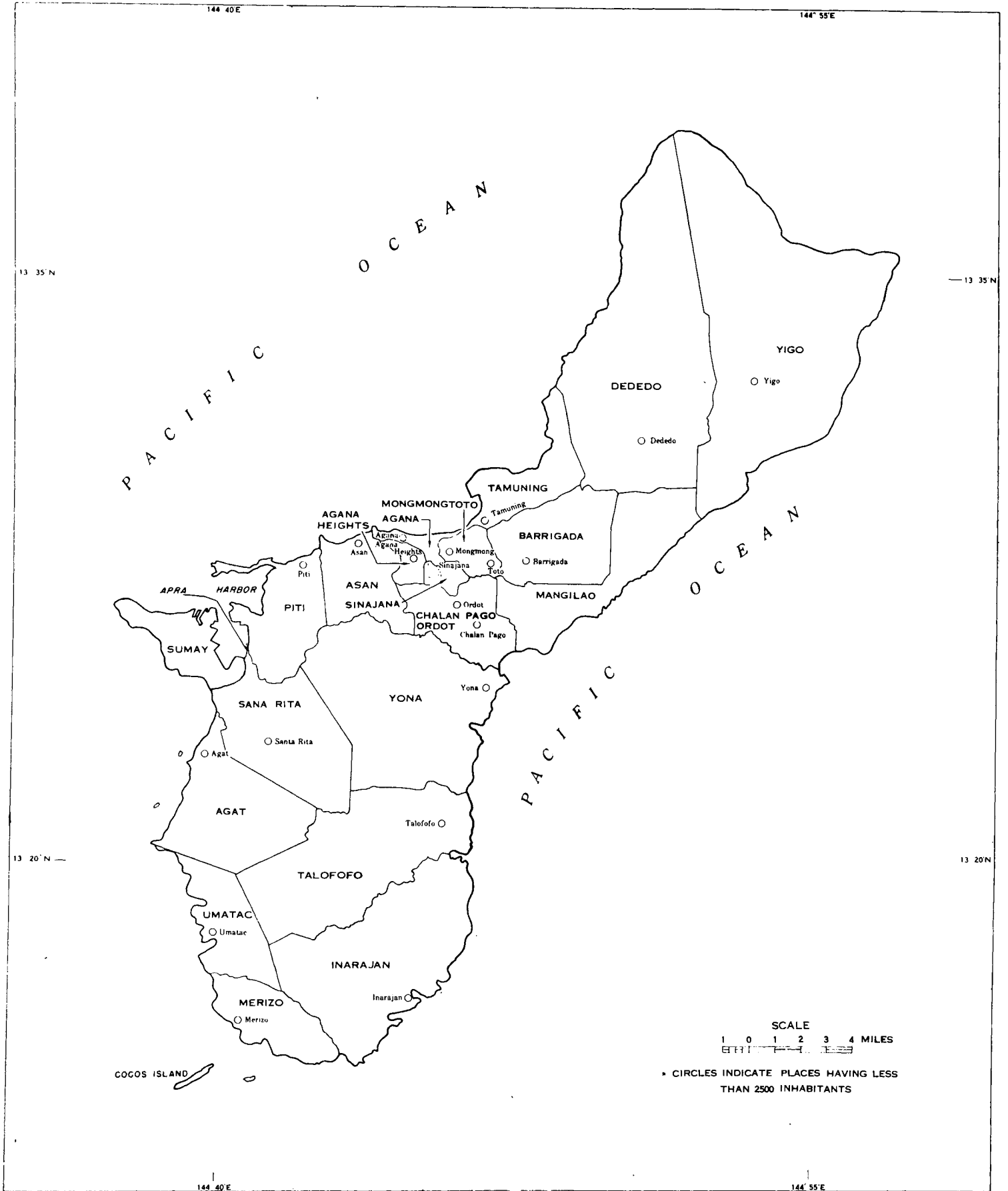
10. Land Area, Farms, and Land in Farms, by Election Districts: 1975 and 1970	17
11. Farms and Land in Farms, by Land Use and by Election Districts: 1975 and 1970	18
12. Farms and Land in Farms, by Size of Farm and by Election Districts: 1975 and 1970	19
13. Farms and Land in Farms, by Tenure of Operator and by Election Districts: 1975 and 1970.	20
14. Farms and Land in Farms, by Ownership and by Election Districts: 1975 and 1970	21
15. Vegetables and Field Crops, by Election Districts: 1975 and 1970	22
16. Fruits and Nuts, by Election Districts: 1975 and 1970	27
17. Livestock and Poultry, by Election Districts: 1975 and 1970.	31
18. Chicken Eggs and Fish, by Election Districts: 1975 and 1970	33
19. Off-Farm Work by Election Districts: 1975 and 1970.	33
20. Operator Characteristics by Election Districts: 1975 and 1970.	34
21. Farms by Source of Financing, by Election Districts: 1975	36
22. Type of Holding by Election Districts: 1975 and 1970	37
23. Farm Labor and Specified Facilities on Farms, by Election Districts: 1975	37

APPENDIXES

A General Explanation	A1
B Report Form	B1

GUAM

Election Districts, Cities and Villages



INTRODUCTION

Authority, Area Covered, and History

The 1974 Census of Agriculture was taken in accordance with the provisions of Title 13, United States Code, reaffirmed by section 818 of the Agriculture and Consumer Protection Act of 1973 (Public Law 93-86). Sections 142(a) and 191 of Title 13 provide for a census of agriculture every 5 years in each State, the District of Columbia, Puerto Rico, Guam, and the Virgin Islands. Section 191 also provides that the census data for Guam may be collected by the Governor or highest ranking Federal official, in accordance with plans prescribed or approved by the Secretary of the U.S. Department of Commerce.

The 1974 census is the eighth census of agriculture of Guam. The first agricultural census for Guam was taken in 1920 as part of the decennial census and continued every 10 years thereafter. In 1964, the first quinquennial (5-year) census was taken in Guam, as authorized by Title 13.

Questionnaire

The questionnaire for the 1974 Census of Agriculture was prepared by the staff of the Census Bureau with the cooperation of the Department of Agriculture of Guam.

To provide more detailed statistics and to aid in processing the data collected, more information was requested for 1974 than for 1970: More crops were treated separately on the 1974 questionnaire, the poultry categories were expanded, and sales data on crops and livestock was included. Inquiries were also added on the distance of farms from a hard-surface road, financial resources

of farm operators, number of days worked by paid and unpaid farm labor, and fisheries.

Definitions and explanations for selected items are given in appendix A. A facsimile of the 1974 questionnaire is shown in appendix B.

Training Program for Enumerators

The supervisors, assistant supervisors, and enumerators employed for the census in Guam received special training for the job, which was prepared by the Census Bureau. The training included classroom practice in interviewing and filling out questionnaires and detailed discussion of the enumerators' instructions.

Enumeration

The statistics in this report represent totals obtained by adding information collected from farm operators during a 7-week period from January 27 to March 14, 1975. For the enumeration, Guam was divided into 20 Enumeration Districts (ED's), clearly outlined on special maps prepared for the census.

Enumerators were given a map and assigned a specific area to enumerate. Except in cities and larger villages, they were required to visit each dwelling (or place) in their area, list the head of its household, and, if it conducted agricultural operations, complete a questionnaire. In urban areas, enumerators were given a list of 1969 farm operations in their assignment and were required to enumerate those that still operated as farms in 1974.

To obtain as complete an enumeration as possible, enumerators were required to plot on their map the location of each

occupied dwelling or place in their ED. They were also given lists of special and large farms located in their area and were required to fill out a questionnaire for each one or explain why one was not necessary.

Enumerators were also instructed to ask enough questions about tracts of land on which no one lived to determine whether agricultural data should be collected from the person in charge of the land. This procedure was designed to assure the enumeration of all land used for agriculture, whether by an individual, a partnership, a corporation, or an institution.

To avoid enumeration of the same place more than once, the Census Bureau established rules whereby enumerators could determine who was responsible for completing a questionnaire for a given place. If a place was entirely within the boundaries of an ED, the enumerator assigned to it completed the questionnaire, regardless of where the person in charge of the operation lived. If a place was partly in one ED and partly in another, the enumerator for the ED in which the person in charge lived was responsible for completing the questionnaire; he reported on all the land that the person in charge operated in Guam, including land outside his ED.

Farm Definition

The statistics presented in this report relate to places qualifying as census farms. For the 1974 Census of Agriculture in Guam, a farm was defined as any place on which any crops or vegetables were harvested or gathered during 1974 or on which there was any livestock

INTRODUCTION Continued

or 15 or more poultry at the time of enumeration.

In comparison, the definition of a farm for the 1970 census was any place on which any crops or vegetables were harvested or gathered during 1969, or on which there was a combined total of 10 or more fruit or nut trees or plants, or on which there was any livestock, or five or more poultry at the time of enumeration.

Office Processing

In the Agriculture Division at the Census Bureau, all questionnaires were individually edited prior to tabulation of the data. In the editing process, questionnaires for places that did not qualify as

census farms were voided. The remaining questionnaires were then examined for accuracy, consistency, and completeness. Errors in calculations and units of measure, inconsistencies, and misplaced entries were corrected; incomplete reports were adjusted on the basis of related information on the same questionnaire or on questionnaires for nearby farms of similar type and size.

After the questionnaires had been edited, the information on them was transferred to tabulation sheets. Subject matter specialists again examined the tabulations for reasonableness and consistency and made necessary corrections on the basis of a further appraisal of the original reports before approving the data for publication.

Tabular Presentation

In the tables presenting the data compiled from the questionnaires completed in Guam, totals are given for each election district and for Guam as a whole. Comparative information for preceding census years is given for those items for which information is available.

Abbreviations and Symbols

The following abbreviations and symbols are used throughout the tables:

- Represents zero.
- D Data withheld to avoid disclosing figures for individual farms or farm operations.
- X Not applicable.
- Z Less than half of the unit reported.
- NA Not available.

Table 1. Farms and Land in Farms, by Land Use: 1975 and 1970

	Total	Cropland			Pastureland		Other land
		Used for crops	Used for pasture	Not used for crops or pasture	Used for pasture or grazing	Not used for pasture or grazing	
Farms.....number...1975..	1,576	1,314	140	532	192	69	851
1970..	1,121	781	134	101	112	91	841
Percent distribution.....1975..	(X)	83.4	8.9	33.8	12.2	4.4	54.0
1970..	(X)	69.7	12.0	9.0	10.0	8.1	75.0
Land in farms.....hectares...1975..	12,046	936	516	4,662	5,059	56	817
1970..	10,586	900	2,681	758	3,836	558	1,853
Percent distribution.....1975..	100.0	7.8	4.3	38.7	42.0	0.5	6.8
1970..	100.0	8.5	25.3	7.2	36.2	5.3	17.5

Table 2. Summary by Size of Farm: 1975 and 1970

	Total	Under 1 hectare	1 to 2 hectares	3 to 4 hectares	5 to 7 hectares	8 to 9 hectares	10 to 19 hectares	20 to 39 hectares	40 to 49 hectares	50 hectares and over
FARMS AND LAND IN FARMS										
Farms.....number...1975..	1,576	968	357	122	47	23	27	18	4	10
1970..	1,121	535	337	114	36	20	36	20	5	18
Percent distribution.....1975..	100.0	61.4	22.7	7.7	3.0	1.6	1.8	1.1	0.3	0.6
1970..	100.0	47.7	30.0	10.1	3.2	1.7	3.2	1.7	.4	1.6
Land in farms.....hectares...1975..	12,046	268	497	419	293	202	392	427	173	9,375
1970..	10,586	166	459	386	218	174	457	545	229	7,952
Percent distribution.....1975..	100.0	2.2	4.1	3.5	2.4	1.7	3.3	3.5	1.4	77.8
1970..	100.0	1.5	4.3	3.6	2.0	1.6	4.3	5.1	2.1	75.1
Average size of farm.....hectares...1975..	7.6	.3	1.4	3.4	6.2	8.8	14.5	23.7	43.2	937.5
1970..	9.4	.3	1.4	3.4	6.1	8.7	12.6	27.3	45.8	441.8
LAND USE										
Total cropland.....farms...1975..	1,391	825	328	116	48	19	28	14	4	9
1970..	1,016	370	304	144	47	34	48	32	6	31
hectares...1975..	6,114	153	329	280	174	150	244	133	96	4,555
1970..	4,339	55	212	200	108	111	218	358	112	2,965
Cropland used for crops.....farms...1975..	1,314	780	310	108	46	17	27	14	3	9
1970..	781	327	243	100	30	20	31	15	3	12
hectares...1975..	936	97	207	178	81	69	142	58	1	103
1970..	900	48	166	144	65	64	127	117	8	161
Cropland used for pasture.....farms...1975..	140	53	30	22	9	9	10	1	2	4
1970..	134	22	38	30	9	7	8	7	1	12
hectares...1975..	516	3	25	15	13	41	59	63	95	202
1970..	2,681	5	25	35	24	20	33	109	43	2,387
Cropland not used for crops or pasture....farms...1975..	532	304	133	53	22	8	7	3	-	2
1970..	101	21	23	14	8	7	9	10	2	7
hectares...1975..	4,662	53	97	87	80	40	43	12	-	4,250
1970..	758	2	21	21	19	27	58	132	61	417
Total pastureland, excluding cropland pasture.....farms...1975..	261	96	74	35	18	11	9	13	1	4
1970..	203	51	51	34	12	10	15	11	5	14
hectares...1975..	5,115	16	39	44	57	21	73	168	15	4,682
1970..	4,394	11	39	52	25	34	89	117	79	3,948
Pastureland used for pasture or grazing...farms...1975..	192	70	54	22	14	6	9	12	1	4
1970..	112	34	27	14	7	3	10	5	3	9
hectares...1975..	5,059	14	32	30	41	5	73	167	15	4,682
1970..	3,836	7	18	21	13	9	64	69	50	3,585
Pastureland not used for pasture or grazing.....farms...1975..	69	26	20	13	4	5	-	1	-	-
1970..	91	17	24	20	5	7	5	6	2	5
hectares...1975..	56	2	7	14	16	16	-	1	-	-
1970..	558	4	21	31	12	25	25	48	29	363
All other land.....farms...1975..	851	551	175	63	20	11	14	12	2	3
1970..	841	457	239	71	23	8	23	7	2	11
hectares...1975..	817	99	129	95	62	31	75	126	62	138
1970..	1,853	100	208	134	85	29	150	70	38	1,039
FARMS BY TENURE OF OPERATOR										
Owners.....number...1975..	1,253	787	283	72	36	21	24	17	3	10
1970..	917	464	262	73	30	19	32	17	5	15
hectares...1975..	11,541	205	396	287	225	178	335	407	133	9,375
1970..	9,922	146	358	251	184	166	417	478	229	7,693
Full owners.....number...1975..	1,208	767	267	71	33	20	22	15	3	10
1970..	913	464	261	72	30	19	32	16	4	15
hectares...1975..	11,396	198	375	284	204	170	297	360	133	9,375
1970..	9,850	146	355	248	184	166	417	457	184	7,693
Part owners.....number...1975..	45	20	16	1	3	1	2	2	-	-
1970..	4	-	1	1	-	-	-	-	-	-
hectares...1975..	145	7	21	3	21	8	38	47	-	-
1970..	72	-	3	3	-	-	-	21	45	-

Table 2. Summary by Size of Farm: 1975 and 1970—Continued

	Total	Under 1 hectare	1 to 2 hectares	3 to 4 hectares	5 to 7 hectares	8 to 9 hectares	10 to 19 hectares	20 to 39 hectares	40 to 49 hectares	50 hectares and over
FARMS BY TENURE OF OPERATOR--Con.										
Tenants.....number...1975..	81	53	12	12	2	1	1	-	-	-
1970..	47	22	14	2	3	1	2	2	-	1
hectares...1975..	91	12	14	36	11	8	10	-	-	-
1970..	222	6	19	6	16	8	20	47	-	100
Permittees.....number...1975..	216	113	57	35	7	1	1	1	1	-
1970..	114	24	51	35	1	-	2	1	-	-
hectares...1975..	366	45	77	116	46	8	14	20	40	-
1970..	239	9	68	116	6	-	20	20	-	-
Nonpermittees.....number...1975..	16	9	3	2	1	-	1	-	-	-
1970..	37	22	7	4	2	-	-	-	-	2
hectares...1975..	32	2	6	8	6	-	10	-	-	-
1970..	199	5	10	13	12	-	-	-	-	159
Others.....number...1975..	10	6	2	1	1	-	-	-	-	-
1970..	6	3	3	-	-	-	-	-	-	-
hectares...1975..	16	4	3	4	5	-	-	-	-	-
1970..	4	(2)	4	-	-	-	-	-	-	-
OFF-FARM WORK BY FARM OPERATOR										
Operators working off their farms.....number...1975..	1,341	784	337	122	41	13	26	13	1	4
1970..	775	377	216	81	25	16	28	15	5	12
1 to 99 days.....number...1975..	210	100	61	18	2	5	18	4	-	2
1970..	153	77	43	12	5	2	5	4	1	4
100 days or more.....number...1975..	1,131	684	276	104	39	8	8	9	1	2
1970..	622	300	173	69	20	14	23	11	4	8
100 to 199 days.....number...1975..	206	140	38	15	6	1	2	2	-	2
1970..	103	44	33	13	3	3	5	1	1	-
200 days or more.....number...1975..	925	544	238	89	33	7	6	7	1	-
1970..	519	256	140	56	17	11	18	10	3	8
Operators not working off their farms.....number...1975..	168	64	56	20	7	7	5	6	1	2
1970..	132	50	40	15	9	4	4	4	-	6
CROPS HARVESTED AND SOLD										
Vegetables and field crops, 1975 and 1970:										
Taro.....farms...1975..	541	292	150	52	16	6	15	7	-	3
1970..	237	86	77	33	14	7	9	5	2	4
hectares...1975..	51	15	19	7	1	1	4	2	-	2
1970..	41	3	9	5	7	3	4	7	(2)	3
pounds harvested...1975..	111,580	46,017	29,733	16,943	5,643	1,891	9,122	1,780	-	451
1970..	72,783	7,951	17,300	9,042	8,380	5,020	8,155	11,285	750	4,900
pounds sold...1975..	14,816	7,816	3,530	1,375	-	995	1,100	-	-	-
Yams.....farms...1975..	304	105	91	45	37	8	6	8	-	4
1970..	142	31	48	29	13	5	9	5	-	2
hectares...1975..	20	2	5	8	1	1	1	1	-	1
1970..	17	(2)	2	2	2	4	2	4	-	1
pounds harvested...1975..	47,225	18,513	16,413	5,128	993	675	922	2,230	-	2,351
1970..	33,672	1,579	4,858	3,810	4,725	9,470	2,255	6,375	-	600
pounds sold...1975..	3,145	1,360	355	780	150	-	500	-	-	-
Sweetpotatoes.....farms...1975..	217	100	45	38	24	2	-	3	1	4
1970..	88	30	25	16	4	2	6	1	2	2
hectares...1975..	17	5	3	6	1	1	-	1	(2)	(2)
1970..	4	1	1	1	(2)	(2)	1	(2)	(2)	(2)
pounds harvested...1975..	43,277	16,672	10,878	14,380	381	80	-	440	20	426
1970..	13,293	1,568	3,565	1,985	470	230	3,630	45	750	1,050
pounds sold...1975..	10,895	825	720	9,050	-	-	-	-	-	300
Cassava (tapioca).....farms...1975..	379	190	95	45	36	3	4	3	-	3
1970..	77	24	25	15	5	3	2	-	2	1
hectares...1975..	27	10	4	6	2	(2)	2	(2)	-	3
1970..	5	1	2	2	(2)	(2)	(2)	-	(2)	(2)
pounds harvested...1975..	85,216	34,850	20,998	13,382	9,446	190	3,160	940	-	2,250
1970..	13,581	2,016	4,491	3,674	1,000	1,300	450	-	450	200
pounds sold...1975..	11,390	4,100	1,345	3,895	2,050	-	-	-	-	-
Gado and other wild root crops.....farms...1975..	89	39	23	16	4	3	3	-	-	1
1970..	48	9	13	7	5	4	3	4	-	3
hectares...1975..	3	3	-	-	-	-	-	-	-	-
1970..	3	3	-	-	-	-	-	-	-	-
pounds harvested...1975..	15,005	4,343	7,256	1,675	421	140	1,020	-	-	150
1970..	18,521	150	1,871	2,295	1,565	11,300	50	590	-	700
pounds sold...1975..	120	120	-	-	-	-	-	-	-	-
Radishes.....farms...1975..	127	59	28	22	7	3	5	1	1	1
1970..	38	9	13	6	2	3	3	2	-	-
hectares...1975..	11	(2)	2	5	1	(2)	3	(2)	(2)	(2)
1970..	5	(2)	(2)	(2)	(2)	(2)	1	4	-	-
pounds harvested...1975..	23,862	2,789	2,511	5,240	5,552	600	7,059	100	10	1
1970..	18,204	931	385	298	210	550	1,830	14,000	-	-
pounds sold...1975..	16,828	1,858	805	2,775	5,190	600	5,600	-	-	-
Tomatoes.....farms...1975..	283	152	82	28	11	3	1	-	2	4
1970..	94	26	37	14	3	1	7	3	-	3
hectares...1975..	28	13	4	3	4	(2)	(2)	-	(2)	4
1970..	21	(2)	2	1	4	(2)	5	6	-	3
pounds harvested...1975..	92,906	22,860	21,003	13,991	12,716	11,820	300	-	15	10,201
1970..	82,559	1,020	3,506	2,883	22,450	60	15,320	33,200	-	4,120
pounds sold...1975..	68,150	12,829	15,100	10,790	10,901	9,050	-	-	-	9,480

Table 2. Summary by Size of Farm: 1975 and 1970—Continued

	Total	Under 1 hectare	1 to 2 hectares	3 to 4 hectares	5 to 7 hectares	8 to 9 hectares	10 to 19 hectares	20 to 39 hectares	40 to 49 hectares	50 hectares and over
CROPS HARVESTED AND SOLD--Con.										
Vegetables and field crops, 1975 and 1970--Con.										
Head cabbage.....farms...1975..	54	18	6	21	3	3	2	-	-	1
hectares...1975..	7	4	(Z)	1	(Z)	(Z)	(Z)	(Z)	(Z)	2
pounds harvested...1975..	12,545	2,486	2,169	3,015	2,225	50	100	-	-	2,500
pounds sold...1975..	7,885	1,200	1,135	1,700	1,500	-	-	-	-	2,350
Chinese cabbage.....farms...1975..	181	66	29	30	6	5	39	3	1	2
hectares...1975..	77	19	26	13	6	3	6	2	-	2
pounds harvested...1975..	183,806	9,068	3,557	14,841	7,631	2,585	129,691	4,040	50	12,343
pounds sold...1975..	165,950	5,742	2,187	11,000	5,600	1,350	128,675	500	-	10,896
Green beans.....farms...1975..	284	146	77	36	9	3	6	3	1	3
hectares...1975..	169	39	62	32	10	7	9	5	-	5
pounds harvested...1975..	72,618	13,421	16,663	10,126	8,933	4,550	7,276	11,278	20	351
pounds sold...1975..	50,876	4,786	11,478	7,655	7,000	4,435	5,665	9,857	-	7,000
Green onions.....farms...1975..	252	111	58	39	21	5	11	4	1	2
hectares...1975..	85	27	26	10	3	3	9	4	2	1
pounds harvested...1975..	31,082	6,128	9,389	4,845	6,028	210	2,181	2,140	300	100
pounds sold...1975..	17,435	915	5,635	1,785	5,200	35	1,470	2,000	-	395
Corn ¹farms...1975..	100	46	29	15	3	1	2	1	-	3
hectares...1975..	51	9	18	10	1	5	4	3	-	1
pounds harvested...1975..	39,696	7,793	6,151	9,151	775	50	500	75	-	15,201
pounds sold...1975..	20,530	1,010	1,260	3,660	500	-	-	-	-	14,100
Cucumbers.....farms...1975..	180	65	44	29	14	9	8	5	-	6
hectares...1975..	83	17	23	15	7	2	10	3	-	6
pounds harvested...1975..	212,959	12,889	20,674	18,540	45,840	3,315	100,500	7,400	-	3,801
pounds sold...1975..	173,684	3,297	15,382	13,050	42,619	2,335	94,200	2,000	-	801
Eggplant.....farms...1975..	363	156	110	51	18	5	13	3	-	7
hectares...1975..	232	74	83	37	11	7	12	4	-	4
pounds harvested...1975..	143,605	35,097	24,621	12,882	10,738	42,900	9,851	1,685	-	5,831
pounds sold...1975..	103,915	17,810	15,590	6,450	7,892	41,600	8,273	1,000	-	5,300
Peppers.....farms...1975..	405	111	107	100	62	5	9	3	1	7
hectares...1975..	168	59	49	26	6	6	10	8	2	2
pounds harvested...1975..	36,029	18,447	5,356	4,285	2,433	135	4,732	480	5	156
pounds sold...1975..	9,415	2,617	1,011	1,305	1,701	-	2,781	-	-	-
Pumpkins and squash.....farms...1975..	292	156	70	34	17	2	8	2	-	3
hectares...1975..	111	34	39	19	3	6	6	3	-	1
pounds harvested...1975..	82,044	20,498	19,368	15,366	10,533	9,852	3,576	600	-	2,251
pounds sold...1975..	21,170	805	9,190	3,605	5,470	-	2,100	-	-	-
Watermelons ²farms...1975..	70	16	17	16	7	3	4	1	-	6
hectares...1975..	20	2	5	3	4	2	3	(Z)	-	1
pounds harvested...1975..	115,066	7,392	17,370	8,188	20,343	13,001	42,871	200	-	5,701
pounds sold...1975..	91,750	3,550	14,100	2,300	16,800	13,000	42,000	-	-	-
Cantaloupes ²farms...1975..	34	9	11	4	2	-	3	1	-	4
hectares...1975..	4	(Z)	2	(Z)	(Z)	-	2	(Z)	-	(Z)
pounds harvested...1975..	21,103	603	2,825	4,551	6,000	-	6,200	74	-	850
pounds sold...1975..	18,095	20	2,325	3,600	6,000	-	6,150	-	-	-
Muskmelons and pepinos ²farms...1975..	39	12	5	8	8	-	1	1	-	4
hectares...1975..	2	(Z)	1	(Z)	(Z)	-	(Z)	(Z)	-	1
pounds harvested...1975..	19,475	2,072	2,120	1,320	1,580	-	500	120	-	11,763
pounds sold...1975..	13,700	-	1,700	-	-	-	500	-	-	11,500
Bittermelons ²farms...1975..	142	62	59	10	1	4	1	2	-	3
hectares...1975..	4	2	2	(Z)	(Z)	(Z)	(Z)	(Z)	-	(Z)
pounds harvested...1975..	30,801	13,789	3,380	330	10,501	1,120	1,500	105	-	76
pounds sold...1975..	25,561	11,170	2,589	-	10,302	-	1,500	-	-	-

¹Includes dry corn and green corn.

²Watermelons, cantaloupes, muskmelons and pepinos, and bittermelons were not reported separately in 1970.

Table 2. Summary by Size of Farm: 1975 and 1970—Continued

CROPS HARVESTED AND SOLD--Con.	Total	Under 1	1 to 2	3 to 4	5 to 7	8 to 9	10 to 19	20 to 39	40 to 49	50 hectares
		hectare	hectares	hectares	hectares	hectares	hectares	hectares	hectares	and over
Vegetables and field crops, 1975 and 1970--Con.										
Other crops.....farms...1975..	218	163	19	10	10	1	1	2	-	12
.....1970..	12	2	8	2	-	-	-	-	-	-
.....hectares...1975..	15	11	3	(Z)	(Z)	(Z)	(Z)	(Z)	-	1
.....1970..	(Z)	(Z)	(Z)	(Z)	-	-	-	-	-	-
.....pounds harvested...1975..	31,119	16,584	10,496	594	360	25	25	250	-	2,785
.....1970..	1,082	2	680	400	-	-	-	-	-	-
.....pounds sold...1975..	9,727	4,000	3,706	280	-	-	-	-	-	1,741
Fruits and nuts:										
Avocados.....farms...1975..	675	393	153	55	26	12	17	12	1	6
.....1970..	535	220	163	73	21	14	24	12	2	6
.....trees...1975..	8,055	1,326	1,164	4,885	176	107	136	182	50	29
.....1970..	3,244	885	749	529	267	247	287	154	12	114
.....pounds harvested...1975..	139,834	68,272	37,466	9,253	9,398	2,395	8,252	4,120	100	578
.....1970..	32,291	5,655	9,354	4,900	2,965	2,040	2,980	1,947	-	2,450
.....pounds sold...1975..	25,568	9,164	7,301	2,945	2,380	977	2,650	-	-	151
Bananas ¹farms...1975..	1,051	599	287	74	32	21	19	10	1	8
.....1970..	751	328	231	94	25	17	28	13	3	12
.....hills...1975..	94,317	28,050	21,944	18,660	8,764	7,000	6,860	2,278	50	711
.....1970..	62,193	12,172	13,282	11,820	4,476	3,955	12,272	1,258	90	2,868
.....pounds harvested...1975..	468,613	160,803	119,387	35,382	18,398	7,355	114,337	8,600	100	4,251
.....1970..	192,721	35,279	43,530	30,020	17,457	18,020	26,145	8,070	400	13,800
.....pounds sold...1975..	89,143	29,011	31,111	7,330	3,211	1,262	16,717	-	-	501
Grapefruit.....farms...1975..	116	31	49	12	9	5	6	1	-	3
.....1970..	69	16	28	9	6	2	6	-	-	2
.....trees...1975..	364	176	126	8	8	28	13	1	-	4
.....1970..	143	26	52	17	21	4	18	-	-	5
.....pounds harvested...1975..	9,958	4,192	2,295	1,946	480	85	260	600	-	100
.....1970..	3,907	590	1,792	80	100	80	1,055	-	-	210
.....pounds sold...1975..	125	-	-	-	25	-	-	100	-	-
Oranges.....farms...1975..	279	116	100	29	13	5	8	3	-	5
.....1970..	248	86	65	43	16	9	13	7	1	8
.....trees...1975..	1,090	489	284	124	30	31	39	25	-	68
.....1970..	1,176	279	219	255	77	37	106	59	1	143
.....pounds harvested...1975..	26,027	9,288	10,093	3,462	1,267	405	802	260	-	450
.....1970..	9,716	1,540	739	1,897	530	600	1,445	1,190	10	1,765
.....pounds sold...1975..	9,225	5,060	3,300	500	25	189	51	-	-	100
Tangerines.....farms...1975..	322	134	94	37	18	10	17	6	1	5
.....1970..	352	127	100	54	15	14	19	12	2	9
.....trees...1975..	3,919	1,474	1,040	659	113	91	217	231	30	64
.....1970..	3,387	455	891	924	79	304	309	69	11	345
.....pounds harvested...1975..	54,748	15,300	13,248	11,551	5,045	4,350	4,402	231	30	591
.....1970..	32,801	3,539	5,188	7,029	1,270	4,250	2,435	1,565	25	7,500
.....pounds sold...1975..	17,780	9,250	4,200	1,900	725	600	1,104	-	-	1
Lemons and limes.....farms...1975..	698	387	219	24	23	13	18	9	1	4
.....1970..	574	246	167	79	22	14	23	11	2	10
.....trees...1975..	4,250	1,518	1,025	482	307	192	677	39	1	9
.....1970..	4,084	877	786	698	125	140	185	71	2	1,200
.....pounds harvested...1975..	73,487	18,527	17,524	15,858	9,695	4,355	5,827	1,410	10	281
.....1970..	58,229	16,581	11,258	10,642	3,908	4,495	1,535	1,485	-	8,325
.....pounds sold...1975..	7,570	1,375	3,221	1,075	977	-	851	-	-	71
Mangos.....farms...1975..	524	280	131	40	26	6	14	12	1	14
.....1970..	484	203	153	56	16	13	21	11	2	9
.....trees...1975..	2,747	749	684	515	170	53	334	82	40	120
.....1970..	1,740	551	457	207	106	51	154	118	9	87
.....pounds harvested...1975..	77,744	27,013	19,543	15,755	2,135	2,075	5,752	2,131	50	3,290
.....1970..	49,407	7,432	14,905	7,020	2,575	4,300	1,790	3,935	200	7,250
.....pounds sold...1975..	6,548	2,345	2,619	-	30	-	101	-	-	1,453
Papayas.....farms...1975..	567	280	175	50	22	20	8	6	1	5
.....1970..	378	182	118	45	5	6	12	5	1	4
.....trees...1975..	18,011	8,723	1,593	1,619	5,330	315	318	70	15	28
.....1970..	3,292	1,026	825	521	325	223	143	127	26	76
.....pounds harvested...1975..	101,346	21,421	22,612	18,816	16,834	18,495	1,727	1,010	30	401
.....1970..	22,089	6,511	7,099	3,610	775	800	979	1,315	200	800
.....pounds sold...1975..	41,774	2,415	10,751	6,126	5,701	16,601	100	-	-	80
Pineapples.....farms...1975..	101	45	28	14	7	2	2	2	-	1
.....1970..	117	39	40	27	6	-	1	2	-	2
.....plants...1975..	4,028	1,951	457	888	573	30	39	40	-	50
.....1970..	5,544	714	1,511	2,486	496	-	200	82	-	55
.....pounds harvested...1975..	6,539	1,982	1,743	1,661	180	83	330	460	-	100
.....1970..	6,229	765	2,949	1,845	390	-	75	125	-	80
.....pounds sold...1975..	100	90	10	-	-	-	-	-	-	-
Breadfruit.....farms...1975..	322	159	105	18	15	7	9	6	-	3
.....1970..	212	58	71	31	16	5	15	7	1	8
.....trees...1975..	2,144	633	545	322	258	162	51	71	-	102
.....1970..	1,983	191	894	90	151	43	298	162	50	104
.....pounds harvested...1975..	78,589	19,330	18,915	16,130	15,494	2,513	2,757	2,600	-	850
.....1970..	33,751	9,090	6,590	4,881	3,885	600	1,950	950	-	5,805
.....pounds sold...1975..	3,830	-	1,100	15	2,100	-	15	-	-	600

¹Includes eating and cooking bananas.

Table 2. Summary by Size of Farm: 1975 and 1970—Continued

	Total	Under 1 hectare	1 to 2 hectares	3 to 4 hectares	5 to 7 hectares	8 to 9 hectares	10 to 19 hectares	20 to 39 hectares	40 to 49 hectares	50 hectares and over
CROPS HARVESTED AND SOLD--Con.										
Fruits and nuts--Continued										
Coconuts.....farms...1975..	940	577	218	58	37	16	16	11	1	6
1970..	683	287	206	96	29	16	27	10	3	9
trees...1975..	50,046	19,794	9,623	7,596	2,901	1,825	2,233	4,189	15	1,870
1970..	46,461	4,493	7,131	8,767	3,440	3,595	7,346	2,278	196	9,215
pounds harvested...1975..	441,197	140,102	126,181	88,443	17,304	19,163	35,252	11,852	50	2,850
1970..	255,844	16,073	44,521	49,910	16,150	16,790	20,675	19,950	675	71,100
pounds sold...1975..	43,800	1,201	3,500	3,600	2,100	1,800	201	4,300	-	27,098
Betelnuts.....farms...1975..	345	159	106	40	14	7	9	5	1	4
1970..	251	98	75	31	13	8	13	4	3	6
trees...1975..	14,488	1,334	3,889	2,016	790	104	353	142	50	5,810
1970..	6,757	577	1,020	325	1,267	362	749	111	17	2,329
pounds harvested...1975..	18,154	5,033	6,727	1,802	871	225	766	780	100	1,850
1970..	15,874	4,124	3,506	795	1,354	595	1,240	470	40	3,750
pounds sold...1975..	3,010	50	2,400	50	-	-	-	-	-	510
Starfruit.....farms...1975..	357	235	49	31	12	6	14	4	1	5
1970..	218	89	68	22	11	4	16	4	-	4
trees...1975..	787	269	141	86	42	29	125	19	50	26
1970..	1,575	154	149	49	78	13	1,051	6	-	75
pounds harvested...1975..	21,878	6,661	5,012	6,396	637	440	1,381	325	453	573
1970..	7,040	1,466	1,311	438	1,162	155	375	65	-	2,068
pounds sold...1975..	920	100	500	-	120	-	200	-	-	-
Guavas.....farms...1975..	476	309	85	43	15	4	9	7	-	4
1970..	320	126	98	47	14	9	13	8	2	3
trees...1975..	5,883	1,247	621	1,375	960	40	244	1,341	-	55
1970..	2,284	497	487	350	246	342	234	59	58	11
pounds harvested...1975..	19,031	6,699	2,791	2,626	1,843	1,835	1,112	1,620	-	505
1970..	6,636	1,193	1,240	1,460	323	1,400	630	240	75	75
pounds sold...1975..	900	300	200	300	-	100	-	-	-	-
Soursops.....farms...1975..	215	89	66	28	13	3	7	7	-	2
1970..	131	32	40	22	6	7	11	6	1	6
trees...1975..	1,712	741	463	321	138	14	18	16	-	1
1970..	2,675	57	207	57	332	16	252	116	50	1,588
pounds harvested...1975..	11,626	4,272	3,296	3,348	212	160	127	210	-	1
1970..	13,645	200	1,435	530	245	750	885	435	40	9,125
pounds sold...1975..	-	-	-	-	-	-	-	-	-	-
Sweetsops ¹farms...1975..	199	87	67	21	9	3	5	3	-	4
1970..	858	340	208	115	18	106	4	14	-	53
pounds harvested...1975..	7,423	3,800	2,029	643	367	225	37	175	-	147
1970..	200	-	100	-	-	100	-	-	-	-
pounds sold...1975..	-	-	-	-	-	-	-	-	-	-
Other fruits.....farms...1975..	323	256	43	14	3	2	4	1	-	2
1970..	132	52	41	27	1	3	2	2	2	2
plants or trees...1975..	1,815	1,164	262	194	110	15	63	7	-	-
1970..	1,353	224	279	166	3	529	28	6	48	70
pounds harvested...1975..	21,838	12,916	6,037	1,104	585	458	185	553	-	-
1970..	3,223	950	740	780	13	350	-	165	125	100
pounds sold...1975..	2,418	1,363	500	255	105	100	-	95	-	-
LIVESTOCK ON FARM										
Carabaos.....farms...1975..	93	41	12	9	10	1	-	3	1	16
1970..	45	7	14	10	3	2	2	2	1	4
number...1975..	223	107	40	19	17	1	-	5	1	33
1970..	149	8	34	15	6	3	7	8	4	64
number sold...1975..	2	1	-	-	1	-	-	-	-	-
Cattle and calves.....farms...1975..	333	100	112	53	14	14	18	17	1	4
1970..	284	92	78	39	19	12	17	10	3	14
number...1975..	2,647	373	466	248	67	264	289	495	4	441
1970..	2,650	263	289	149	99	76	176	144	90	1,364
number sold...1975..	161	23	4	19	6	3	41	55	-	10
Milk cows.....farms...1975..	85	33	25	9	6	4	-	6	-	2
1970..	54	12	18	7	3	4	2	4	-	4
number...1975..	268	69	59	21	18	5	-	43	-	53
1970..	126	20	27	8	6	12	2	15	-	36
number sold...1975..	10	7	-	-	3	-	-	-	-	-
All other.....farms...1975..	302	91	89	44	13	25	17	17	1	5
1970..	271	88	72	37	19	11	17	10	3	14
number...1975..	2,379	304	407	227	49	259	289	452	4	388
1970..	2,524	243	262	141	93	64	174	129	90	1,328
number sold...1975..	151	17	22	22	3	2	41	30	-	14
Hogs and pigs.....farms...1975..	1,064	589	269	115	33	25	14	11	2	6
1970..	598	267	171	69	28	14	26	10	3	10
number...1975..	8,245	1,908	2,260	1,834	444	326	515	588	11	359
1970..	4,348	1,455	1,325	445	217	199	164	254	53	236
number sold...1975..	1,678	249	431	526	94	71	106	52	-	149
Goats and kids.....farms...1975..	152	40	35	20	10	20	11	5	10	1
1970..	75	25	18	11	4	3	8	5	-	1
number...1975..	968	224	128	284	49	128	42	20	63	30
1970..	458	76	91	48	28	27	110	39	-	39
number sold...1975..	43	9	7	3	3	11	3	2	2	3

¹Sweetsops included in "Other fruits" in 1970.

Table 2. Summary by Size of Farm: 1975 and 1970—Continued

	Total	Under 1 hectare	1 to 2 hectares	3 to 4 hectares	5 to 7 hectares	8 to 9 hectares	10 to 19 hectares	20 to 39 hectares	40 to 49 hectares	50 hectares and over
LIVESTOCK ON FARM--Con.										
Horses and colts.....farms...1975..	31	11	7	3	2	2	3	3	-	-
.....1970..	16	4	3	2	1	1	1	2	-	2
.....number...1975..	113	15	17	9	14	21	8	29	-	-
.....1970..	73	8	19	21	3	1	1	3	-	17
.....number sold...1975..	11	1	-	-	-	10	-	-	-	-
POULTRY ON FARM										
Chicken hens 4 months old and older.....farms...1975..	986	601	200	96	25	17	18	18	2	9
.....number...1975..	151,164	17,289	19,301	11,635	85,188	5,097	5,383	6,246	75	950
.....number sold...1975..	35,607	8,136	760	1,150	22,976	-	875	1,550	-	160
Commercial layers.....farms...1975..	226	127	40	29	9	5	8	6	-	2
.....number...1975..	120,453	9,576	6,680	6,430	84,715	4,051	3,605	4,626	-	770
.....number sold...1975..	34,315	7,225	775	810	23,745	-	600	1,000	-	160
Other chicken hens.....farms...1975..	910	494	218	92	27	40	21	13	2	3
.....number...1975..	30,711	7,713	12,621	5,205	473	1,046	1,778	1,620	75	180
.....number sold...1975..	1,292	225	65	340	100	152	300	100	10	-
Chickens less than 4 months old ¹farms...1975..	605	371	167	14	4	5	14	17	10	3
.....number...1975..	53,332	20,686	21,256	529	157	155	2,350	823	7,308	68
.....number sold...1975..	100	24	50	-	-	6	10	10	-	-
Roosters and pullets ¹farms...1975..	861	475	209	86	28	20	22	16	-	5
.....number...1975..	14,271	6,088	5,426	248	332	136	1,178	679	-	184
.....number sold...1975..	350	230	-	60	-	-	15	-	-	45
Chickens 4 months old and over ²farms...1970..	888	428	259	98	28	17	28	16	4	10
.....number...1970..	126,636	41,187	51,316	12,303	4,270	1,296	7,046	7,188	300	1,730
All other poultry ²farms...1970..	130	48	37	19	7	3	9	2	1	4
.....number...1970..	4,864	888	680	950	1,060	63	174	30	100	919
Ducks.....farms...1975..	274	104	88	51	7	9	6	8	1	-
.....number...1975..	3,324	654	1,090	585	65	41	773	91	25	-
.....number sold...1975..	684	230	224	-	-	-	210	20	-	-
Geese ¹farms...1975..	8	2	-	2	1	1	2	-	-	-
.....number...1975..	79	23	-	16	10	10	20	-	-	-
.....number sold...1975..	-	-	-	-	-	-	-	-	-	-
Guineas ¹farms...1975..	1	-	-	-	-	-	-	-	1	-
.....number...1975..	20	-	-	-	-	-	-	-	20	-
.....number sold...1975..	-	-	-	-	-	-	-	-	-	-
Pigeons ¹farms...1975..	123	63	31	22	2	2	2	1	-	-
.....number...1975..	3,219	665	789	1,586	18	21	111	20	-	-
.....number sold...1975..	131	125	-	-	-	-	6	-	-	-
POULTRY PRODUCTS										
Chicken eggs.....farms...1975..	63	20	19	8	7	2	2	2	-	3
.....1970..	63	16	21	9	6	1	4	3	-	3
.....dozens sold...1975..	1,838,749	1,240,229	359,625	34,370	40,928	2,050	(D)	(D)	-	16,347
.....dozens sold...1970..	854,214	241,062	411,677	64,670	44,305	1,500	41,800	41,000	-	8,200
FISH										
Farms.....1975..	13	6	3	1	-	-	1	1	-	1
.....pounds harvested...1975..	6,880	2,850	3,577	3	-	-	50	300	-	100
.....pounds sold...1975..	1,790	1,200	290	-	-	-	-	300	-	-

¹Included in "All other poultry" in 1970.

²1975 data not available for these categories.

Table 3. Summary by Tenure of Operator: 1975 and 1970

	Total	Full owners	Part owners	Tenants	Permittees	Nonpermittees	Others
FARMS AND LAND IN FARMS							
Farms.....number...1975..	1,576	1,208	45	81	216	16	10
1970..	1,121	913	4	47	114	37	6
Percent distribution.....1975..	100.0	76.4	2.9	5.1	13.8	1.1	.6
1970..	100.0	81.4	.4	4.2	10.2	3.3	.5
Land in farms.....hectares...1975..	12,046	11,396	145	91	366	32	16
1970..	10,586	9,850	72	222	239	199	4
Percent distribution.....1975..	100.0	94.6	1.2	.8	3.0	.3	.1
1970..	100.0	93.0	.7	2.1	2.3	1.9	-
Average size of farm.....hectares...1975..	7.6	9.4	3.2	1.1	1.7	2.0	1.6
1970..	9.4	10.8	18.0	4.7	2.1	5.4	.7
LAND USE							
Total cropland.....farms...1975..	1,391	1,087	45	55	181	14	9
1970..	1,016	799	7	43	127	32	8
hectares...1975..	6,114	5,734	42	67	240	20	11
1970..	4,339	3,906	68	167	131	64	3
Cropland used for crops.....farms...1975..	1,314	1,016	44	54	177	14	9
1970..	781	618	2	32	97	26	6
hectares...1975..	936	701	13	42	162	18	(Z)
1970..	900	661	9	65	100	63	2
Cropland used for pasture.....farms...1975..	140	114	6	-	17	1	2
1970..	134	104	3	8	13	6	-
hectares...1975..	516	460	19	-	29	1	7
1970..	2,681	2,609	53	9	9	1	-
Cropland not used for crops or pasture.....farms...1975..	532	445	19	17	44	5	2
1970..	101	77	2	3	17	-	2
hectares...1975..	4,662	4,573	10	25	49	1	4
1970..	758	636	6	93	22	-	1
Total pastureland, excluding cropland pasture.....farms...1975..	261	204	11	7	35	1	3
1970..	203	167	1	10	19	5	1
hectares...1975..	5,115	5,053	3	8	43	8	(Z)
1970..	4,394	4,322	2	24	39	6	1
Pastureland used for pasture or grazing.....farms...1975..	192	163	3	14	11	1	-
1970..	112	94	1	6	7	4	-
hectares...1975..	5,059	5,011	2	8	33	5	-
1970..	3,836	3,801	2	6	23	4	-
Pastureland not used for pasture or grazing.....farms...1975..	69	53	3	-	11	1	1
1970..	91	73	-	4	12	1	1
hectares...1975..	56	42	1	-	10	3	(Z)
1970..	558	521	-	18	16	3	(Z)
Other land.....farms...1975..	851	632	28	47	125	11	8
1970..	841	698	2	29	78	30	4
hectares...1975..	817	609	100	16	83	4	5
1970..	1,853	1,622	2	31	69	128	1
FARMS BY SIZE OF FARM							
Under 1 hectare.....farms...1975..	968	767	20	53	113	9	6
1970..	535	464	-	22	24	22	3
hectares...1975..	268	198	7	12	45	2	4
1970..	166	146	-	6	9	5	(Z)
1 to 2 hectares.....farms...1975..	357	267	16	12	57	3	2
1970..	337	261	1	14	51	7	3
hectares...1975..	496	375	21	14	77	6	3
1970..	459	355	3	19	68	10	4
3 to 4 hectares.....farms...1975..	122	71	1	12	35	2	1
1970..	114	72	1	2	35	4	-
hectares...1975..	451	284	3	36	116	8	4
1970..	386	248	3	6	116	13	-
5 to 7 hectares.....farms...1975..	47	33	3	2	7	1	1
1970..	36	30	-	3	1	2	-
hectares...1975..	293	204	21	11	46	6	5
1970..	218	184	-	16	6	12	-
8 to 9 hectares.....farms...1975..	23	20	1	1	1	-	-
1970..	20	19	-	1	-	-	-
hectares...1975..	194	170	8	8	8	-	-
1970..	174	166	-	8	-	-	-
10 to 19 hectares.....farms...1975..	27	22	2	1	1	1	-
1970..	36	32	-	2	2	-	-
hectares...1975..	369	297	38	10	14	10	-
1970..	457	417	-	20	20	-	-
20 to 39 hectares.....farms...1975..	18	15	2	-	1	-	-
1970..	20	16	1	2	1	-	-
hectares...1975..	427	360	47	-	20	-	-
1970..	545	457	21	47	20	-	-
40 to 49 hectares.....farms...1975..	4	3	-	-	1	-	-
1970..	5	4	1	-	-	-	-
hectares...1975..	173	133	-	-	40	-	-
1970..	229	184	45	-	-	-	-
50 hectares and over.....farms...1975..	10	10	-	-	-	-	-
1970..	18	15	-	1	-	2	-
hectares...1975..	9,375	9,375	-	-	-	-	-
1970..	7,952	7,693	-	100	-	159	-

Table 3. Summary by Tenure of Operator: 1975 and 1970—Continued

	Total	Full owners	Part owners	Tenants	Permittees	Nonpermittees	Others
OFF-FARM WORK BY FARM OPERATOR							
Operators working off their farms.....number...1975..	1,341	1,057	20	78	134	38	14
1970..	775	606	3	42	88	30	6
1 to 99 days.....number...1975..	210	162	9	14	14	6	5
1970..	153	129	-	5	14	4	1
100 days or more.....number...1975..	1,131	895	11	64	120	32	9
1970..	622	477	3	37	74	26	5
100 to 199 days.....number...1975..	206	141	1	16	29	16	3
1970..	103	73	1	14	12	2	1
200 or more days.....number...1975..	925	754	10	48	91	16	6
1970..	519	404	2	23	62	24	4
Operators not working off their farms.....number...1975..	168	106	6	8	47	1	-
1970..	132	111	-	-	16	5	-
CROPS HARVESTED AND SOLD							
Vegetables and field crops, 1975 and 1970:							
Taro.....farms...1975..	541	382	24	14	112	8	1
1970..	237	177	-	12	39	6	3
hectares...1975..	51	34	2	1	13	1	(Z)
1970..	41	30	-	2	5	3	1
pounds harvested...1975..	111,580	67,423	7,525	3,260	31,797	1,475	100
1970..	72,783	54,783	-	3,953	10,155	3,192	700
pounds sold...1975..	14,816	6,656	1,600	275	5,585	700	-
Yams.....farms...1975..	304	225	19	5	50	3	2
1970..	142	106	-	4	28	3	1
hectares...1975..	20	11	1	1	6	1	(Z)
1970..	17	15	-	(Z)	1	1	(Z)
pounds harvested...1975..	47,225	34,535	1,635	2,000	8,295	760	-
1970..	33,672	27,968	-	146	2,953	2,105	500
pounds sold...1975..	3,145	2,515	300	30	200	100	-
Sweetpotatoes.....farms...1975..	217	144	11	9	50	3	-
1970..	88	63	-	2	18	5	-
hectares...1975..	17	8	1	1	5	1	1
1970..	4	3	-	(Z)	1	(Z)	-
pounds harvested...1975..	43,277	17,702	1,750	980	20,745	2,100	-
1970..	13,293	10,253	-	90	2,805	145	-
pounds sold...1975..	10,895	4,800	300	100	4,745	950	-
Cassava (Tapioca).....farms...1975..	379	283	13	8	69	4	2
1970..	77	59	-	2	16	-	-
hectares...1975..	27	15	1	(Z)	10	1	-
1970..	5	4	-	(Z)	1	-	-
pounds harvested...1975..	85,216	56,658	2,765	1,570	20,493	3,130	600
1970..	13,581	9,021	-	1,200	3,360	-	-
pounds sold...1975..	11,390	8,450	-	-	1,940	1,000	-
Gado and other wild root crops.....farms...1975..	89	73	6	2	6	2	-
1970..	48	44	-	-	2	2	-
hectares...1975..	3	3	(Z)	(Z)	(Z)	-	-
1970..	3	3	-	-	-	-	-
pounds harvested...1975..	15,005	12,225	1,095	1,080	605	-	-
1970..	18,521	17,516	-	-	1,005	-	-
pounds sold...1975..	120	120	-	-	-	-	-
Radishes.....farms...1975..	127	73	5	10	37	2	-
1970..	38	25	1	4	5	3	-
hectares...1975..	11	5	1	1	4	(Z)	-
1970..	5	1	1	3	(Z)	(Z)	-
pounds harvested...1975..	23,862	8,312	190	5,405	9,760	45	150
1970..	18,204	3,591	2,000	12,090	485	38	-
pounds sold...1975..	16,828	3,953	900	5,100	1,775	5,000	100
Tomatoes.....farms...1975..	283	193	13	15	56	4	2
1970..	94	65	1	6	14	7	1
hectares...1975..	28	10	3	2	13	(Z)	(Z)
1970..	21	10	1	9	1	(Z)	(Z)
pounds harvested...1975..	92,906	38,724	9,507	12,385	29,410	1,860	1,020
1970..	82,559	39,094	2,000	37,740	3,273	424	28
pounds sold...1975..	68,150	27,830	7,650	11,900	19,170	1,600	-
Head cabbage ¹farms...1975..	54	31	1	2	19	-	1
1970..	7	3	-	-	3	-	1
hectares...1975..	7	3	-	-	3	-	-
1970..	7	3	-	-	3	-	-
pounds harvested...1975..	12,545	3,851	75	1,060	6,359	-	1,200
1970..	7,885	2,455	-	700	4,030	-	700
pounds sold...1975..	7,885	2,455	-	700	4,030	-	700
Chinese cabbage.....farms...1975..	181	123	10	6	40	1	1
1970..	77	52	1	5	16	3	-
hectares...1975..	29	14	1	2	7	3	2
1970..	10	3	(Z)	6	1	(Z)	-
pounds harvested...1975..	183,806	34,204	2,370	129,183	16,749	1,100	200
1970..	45,026	10,509	2,000	28,790	3,603	124	-
pounds sold...1975..	165,950	21,955	1,100	129,100	12,815	880	100
Green beans.....farms...1975..	284	184	29	12	54	4	1
1970..	169	131	1	7	25	5	-
hectares...1975..	26	9	4	2	9	(Z)	2
1970..	38	26	1	8	2	1	-
pounds harvested...1975..	72,618	31,759	1,340	11,140	25,604	2,260	515
1970..	171,805	100,745	2,000	63,700	5,145	215	-
pounds sold...1975..	50,876	17,335	425	10,750	20,716	1,550	100

¹Not included in previous censuses.

Table 3. Summary by Tenure of Operator: 1975 and 1970—Continued

	Total	Full owners	Part owners	Tenants	Permittees	Nonpermittees	Others
CROPS HARVESTED AND SOLD--Con.							
Vegetables and field crops, 1975 and 1970--Continued							
Green onions.....farms...1975..	252	158	28	6	52	6	2
1970..	85	70	1	4	8	1	1
hectares...1975..	11	6	(2)	(2)	5	(2)	(2)
1970..	9	5	1	3	(2)	(2)	(2)
pounds harvested...1975..	31,082	10,020	583	1,065	12,139	6,570	705
1970..	24,536	9,921	2,000	12,105	4,500	10	50
pounds sold...1975..	17,435	2,495	-	1,000	7,890	5,500	550
Corn ¹farms...1975..	100	56	8	1	34	-	1
1970..	51	38	1	5	6	1	-
hectares...1975..	14	8	1	(2)	5	-	(2)
1970..	15	9	1	3	2	(2)	-
pounds harvested...1975..	39,696	28,761	250	200	9,785	-	700
1970..	29,315	19,315	2,000	5,950	1,950	100	-
pounds sold...1975..	20,530	15,570	-	-	4,460	-	500
Cucumbers.....farms...1975..	180	112	10	10	45	3	-
1970..	83	57	1	6	16	2	1
hectares...1975..	25	10	1	4	9	1	-
1970..	42	20	1	14	7	(2)	(2)
pounds harvested...1975..	212,959	43,408	59,565	39,090	65,596	5,300	-
1970..	245,182	91,265	2,000	105,400	46,495	7	15
pounds sold...1975..	173,684	22,645	54,020	38,000	55,869	3,150	-
Eggplant.....farms...1975..	363	239	13	15	86	5	5
1970..	232	173	1	10	37	9	2
hectares...1975..	37	20	1	3	11	2	(2)
1970..	27	19	1	5	2	(2)	(2)
pounds harvested...1975..	143,605	90,376	1,830	8,580	29,379	10,940	2,500
1970..	110,979	65,627	2,000	37,375	5,506	400	71
pounds sold...1975..	103,915	64,860	300	7,025	19,780	9,850	2,100
Peppers.....farms...1975..	405	284	25	11	78	4	3
1970..	168	134	1	4	24	3	2
hectares...1975..	17	7	1	1	8	(2)	(2)
1970..	15	8	1	5	1	(2)	(2)
pounds harvested...1975..	36,029	13,965	933	14,190	6,785	46	110
1970..	42,345	17,721	2,000	20,060	2,399	125	40
pounds sold...1975..	9,415	1,440	105	4,005	3,815	-	50
Pumpkins and squash.....farms...1975..	292	211	11	12	56	1	1
1970..	111	84	1	2	20	3	1
hectares...1975..	21	11	1	1	8	(2)	(2)
1970..	9	6	1	(2)	2	(2)	(2)
pounds harvested...1975..	82,044	27,295	21,942	3,784	27,823	600	600
1970..	20,904	14,609	2,000	120	4,064	75	36
pounds sold...1975..	21,170	6,415	3,700	50	10,655	50	300
Watermelons ²farms...1975..	70	52	3	4	10	1	-
1970..	20	5	11	2	2	-	-
hectares...1975..	20	5	11	2	2	-	-
1970..	9	6	1	(2)	2	(2)	(2)
pounds harvested...1975..	115,066	45,371	45,205	15,000	7,490	2,000	-
1970..	91,750	27,850	40,000	15,000	7,100	1,800	-
pounds sold...1975..	91,750	27,850	40,000	15,000	7,100	1,800	-
Cantaloupes ²farms...1975..	34	27	2	2	3	-	-
1970..	4	2	-	1	1	-	-
hectares...1975..	4	2	-	1	1	-	-
1970..	21,103	13,553	540	6,000	1,010	-	-
pounds harvested...1975..	21,103	13,553	540	6,000	1,010	-	-
1970..	18,095	10,650	520	6,000	925	-	-
pounds sold...1975..	18,095	10,650	520	6,000	925	-	-
Muskmelons and pepinos ²farms...1975..	39	25	1	1	6	6	-
1970..	2	2	(2)	(2)	(2)	-	-
hectares...1975..	2	2	(2)	(2)	(2)	-	-
1970..	19,475	16,360	60	1,025	2,030	-	-
pounds harvested...1975..	19,475	16,360	60	1,025	2,030	-	-
1970..	13,700	11,300	-	1,000	1,400	-	-
pounds sold...1975..	13,700	11,300	-	1,000	1,400	-	-
Bittermelons ²farms...1975..	142	77	38	6	18	2	1
1970..	4	3	(2)	1	(2)	(2)	(2)
hectares...1975..	4	3	(2)	1	(2)	(2)	(2)
1970..	30,801	15,459	2,487	9,335	1,520	1,800	200
pounds harvested...1975..	30,801	15,459	2,487	9,335	1,520	1,800	200
1970..	25,561	11,695	2,230	8,911	1,025	1,600	100
pounds sold...1975..	25,561	11,695	2,230	8,911	1,025	1,600	100
Other crops.....farms...1975..	218	156	7	9	35	10	1
1970..	12	9	-	1	2	-	-
hectares...1975..	15	5	-	6	4	-	(2)
1970..	(2)	(2)	-	(2)	(2)	-	-
pounds harvested...1975..	31,119	24,993	230	250	4,841	805	-
1970..	1,082	282	-	400	400	-	-
pounds sold...1975..	9,727	5,055	250	-	3,722	700	-
Fruits and nuts:							
Avocados.....farms...1975..	675	542	24	23	74	5	7
1970..	535	437	1	13	65	17	2
trees...1975..	8,055	6,784	237	67	795	136	36
1970..	3,244	2,585	8	38	488	116	9
pounds harvested...1975..	139,834	111,693	4,760	2,460	16,421	3,150	1,350
1970..	32,291	26,788	900	205	3,858	510	30
pounds sold...1975..	25,568	22,464	400	4	1,675	1,025	-

¹Includes dry corn and green corn.

²Watermelons, cantaloupes, muskmelons and pepinos, and bittermelons were not reported separately in 1970.

Table 3. Summary by Tenure of Operator: 1975 and 1970—Continued

CROPS HARVESTED AND SOLD--Con.		Total	Full owners	Part owners	Tenants	Permittees	Nonpermittees	Others
Fruits and nuts--Continued								
Bananas ¹	farms...1975..	1,051	836	36	40	121	8	10
	1970..	751	603	2	26	90	26	4
	hills...1975..	94,317	69,407	8,459	2,574	9,575	2,689	1,613
	1970..	62,193	46,784	400	2,503	8,406	2,720	1,380
	pounds harvested...1975..	468,613	253,687	116,540	7,308	64,663	22,310	4,105
	1970..	192,721	152,888	1,500	9,265	19,920	7,298	1,850
	pounds sold...1975..	89,143	42,893	25,300	710	6,840	11,400	2,000
Grapefruit.....	farms...1975..	116	94	5	1	14	1	1
	1970..	69	54	-	1	8	5	1
	trees...1975..	364	328	9	1	19	6	1
	1970..	143	108	-	1	17	16	1
	pounds harvested...1975..	9,958	7,613	510	100	1,385	300	50
	1970..	3,907	3,247	-	-	310	300	50
	pounds sold...1975..	125	125	-	-	-	-	-
Oranges.....	farms...1975..	279	232	7	8	30	1	1
	1970..	248	203	1	6	27	9	2
	trees...1975..	1,090	870	29	48	140	2	1
	1970..	1,176	953	3	54	117	47	2
	pounds harvested...1975..	26,027	24,187	455	320	970	50	45
	1970..	9,716	8,139	25	850	602	100	-
	pounds sold...1975..	9,225	8,675	125	375	25	25	-
Tangerines.....	farms...1975..	322	250	17	9	40	4	2
	1970..	352	282	1	11	47	10	1
	trees...1975..	3,919	3,390	212	28	261	24	4
	1970..	3,387	2,518	5	48	740	75	1
	pounds harvested...1975..	54,748	45,758	1,740	525	5,572	1,100	53
	1970..	32,801	28,691	-	675	2,935	500	-
	pounds sold...1975..	17,780	15,105	25	-	1,700	950	-
Lemons and limes.....	farms...1975..	698	571	19	18	81	4	5
	1970..	574	449	1	14	82	24	4
	trees...1975..	4,250	3,503	128	95	476	33	15
	1970..	4,084	3,259	2	73	616	117	17
	pounds harvested...1975..	73,487	59,094	3,225	2,310	7,038	180	1,640
	1970..	58,229	48,641	15	1,475	7,008	940	150
	pounds sold...1975..	7,570	5,070	400	-	2,100	-	-
Mangos.....	farms...1975..	524	449	8	14	45	3	5
	1970..	484	419	1	10	40	12	2
	trees...1975..	2,747	2,447	58	44	160	14	24
	1970..	1,740	1,546	4	22	141	21	6
	pounds harvested...1975..	77,744	69,959	2,285	810	4,515	25	150
	1970..	49,407	46,707	500	450	850	900	-
	pounds sold...1975..	6,548	6,548	-	-	-	-	-
Papayas.....	farms...1975..	567	473	19	22	43	3	7
	1970..	378	311	-	10	38	15	4
	trees...1975..	18,011	11,187	136	143	6,448	68	29
	1970..	3,292	2,581	-	62	394	140	115
	pounds harvested...1975..	101,346	71,211	2,105	2,745	24,505	285	495
	1970..	22,089	18,774	-	185	1,855	450	825
	pounds sold...1975..	41,774	27,232	500	1,000	13,040	1	1
Pineapples.....	farms...1975..	101	76	7	-	16	1	1
	1970..	117	87	-	1	22	6	1
	plants...1975..	4,028	2,704	812	6	456	50	-
	1970..	5,544	4,386	-	1	848	109	200
	pounds harvested...1975..	6,539	5,660	500	-	349	30	-
	1970..	6,229	5,324	-	-	715	130	60
	pounds sold...1975..	100	100	-	-	-	-	-
Breadfruit.....	farms...1975..	322	271	11	7	28	5	-
	1970..	212	178	1	7	20	5	1
	trees...1975..	2,144	1,739	84	96	203	15	7
	1970..	1,983	1,733	1	158	66	22	3
	pounds harvested...1975..	78,589	64,785	3,017	2,015	4,522	4,200	50
	1970..	33,751	29,476	-	2,650	1,200	275	150
	pounds sold...1975..	3,830	915	100	-	815	2,000	-
Coconuts.....	farms...1975..	940	738	30	35	119	9	9
	1970..	683	542	2	19	91	25	4
	trees...1975..	50,046	41,038	936	688	6,714	552	118
	1970..	46,461	35,374	204	1,014	6,948	2,887	34
	pounds harvested...1975..	441,197	333,720	24,285	5,045	72,137	4,460	1,550
	1970..	255,844	222,979	2,060	4,045	17,390	9,270	100
	pounds sold...1975..	43,800	40,900	-	-	2,900	-	-
Betelnuts.....	farms...1975..	345	286	15	6	33	2	3
	1970..	251	223	1	3	17	6	1
	trees...1975..	14,488	13,457	629	40	285	55	22
	1970..	6,757	6,582	6	10	103	31	25
	pounds harvested...1975..	18,154	14,311	2,302	188	1,253	100	-
	1970..	15,874	15,489	60	75	85	115	50
	pounds sold...1975..	3,010	2,010	1,000	-	-	-	-

¹ Includes eating and cooking bananas.

Table 3. Summary by Tenure of Operator: 1975 and 1970—Continued

	Total	Full owners	Part owners	Tenants	Permittees	Nonpermittees	Others
CROPS HARVESTED AND SOLD--Con.							
Fruits and nuts--Continued							
Starfruit.....farms...1975..	357	312	15	7	19	2	2
1970..	218	188	1	2	19	6	2
trees...1975..	787	681	41	8	45	6	6
1970..	1,575	1,507	1	4	51	10	2
pounds harvested...1975..	21,878	19,546	405	145	1,587	5	190
1970..	7,040	6,110	50	60	730	50	40
pounds sold...1975..	920	900	20	-	-	-	-
Guavas.....farms...1975..	476	380	21	13	56	3	3
1970..	320	254	1	9	38	16	2
trees...1975..	5,883	4,050	102	48	1,557	116	10
1970..	2,284	1,921	2	28	266	62	5
pounds harvested...1975..	19,031	15,429	675	196	2,506	125	100
1970..	6,636	5,684	40	162	535	215	-
pounds sold...1975..	900	600	-	-	300	-	-
Soursops.....farms...1975..	215	176	7	5	24	1	2
1970..	131	113	-	1	14	3	-
trees...1975..	1,712	1,470	21	58	162	1	-
1970..	2,675	2,529	-	4	132	10	-
pounds harvested...1975..	11,626	9,691	410	380	1,135	10	-
1970..	13,645	13,000	-	100	520	25	-
pounds sold...1975..	-	-	-	-	-	-	-
Sweetsops ¹farms...1975..	199	167	6	4	19	1	2
trees...1975..	858	697	28	22	105	4	2
pounds harvested...1975..	7,423	6,299	185	155	764	10	10
pounds sold...1975..	200	200	-	-	-	-	-
Other fruits.....farms...1975..	323	248	16	15	33	4	7
1970..	132	102	1	2	19	6	2
plants or trees...1975..	1,815	1,431	51	56	212	41	24
1970..	1,353	1,179	1	3	45	74	51
pounds harvested...1975..	21,838	18,480	967	271	1,655	298	167
1970..	3,223	2,273	-	50	775	25	100
pounds sold...1975..	2,418	2,205	-	-	213	-	-
LIVESTOCK ON FARM							
Carabaos.....farms...1975..	93	73	5	2	11	2	-
1970..	45	36	1	4	3	1	-
number...1975..	223	193	6	2	18	3	1
1970..	149	132	6	6	4	1	-
number sold...1975..	2	1	-	-	1	-	-
Cattle and calves.....farms...1975..	333	252	11	21	43	4	2
1970..	284	226	3	14	27	14	-
number...1975..	2,647	2,244	118	106	163	4	12
1970..	2,650	2,412	49	56	88	45	-
number sold...1975..	161	133	14	2	12	-	-
Milk cows.....farms...1975..	85	64	6	4	9	1	1
1970..	54	38	1	4	8	3	-
number...1975..	268	206	21	11	27	1	2
1970..	126	95	1	8	18	4	-
number sold...1975..	10	10	-	-	-	-	-
All other.....farms...1975..	302	233	12	10	42	3	2
1970..	271	215	3	14	25	14	-
number...1975..	2,379	2,038	97	93	138	3	10
1970..	2,524	2,317	48	48	70	41	-
number sold...1975..	151	133	7	4	7	-	-
Hogs and pigs.....farms...1975..	1,064	771	32	62	168	24	7
1970..	598	476	2	24	67	26	3
number...1975..	8,245	5,757	422	373	1,483	86	124
1970..	4,348	3,250	17	223	710	144	4
number sold...1975..	1,678	875	82	88	551	81	1
Goats and kids.....farms...1975..	152	112	5	3	26	3	3
1970..	75	56	2	5	10	2	-
number...1975..	968	784	59	3	107	5	10
1970..	458	377	7	22	49	3	-
number sold...1975..	43	21	-	-	12	6	4
Horses and colts.....farms...1975..	31	24	3	1	3	-	-
1970..	16	15	-	-	1	-	-
number...1975..	113	64	32	1	12	4	-
1970..	73	71	-	-	2	-	-
Number sold...1975..	11	1	10	-	-	-	-
POULTRY ON FARM							
Chicken hens 4 months old and older.....farms...1975..	986	753	32	40	145	11	5
number...1975..	151,164	99,088	38,416	1,753	11,208	285	414
number sold...1975..	35,607	33,060	950	-	1,597	-	-
Commercial layers.....farms...1975..	226	157	20	14	32	-	3
number...1975..	120,453	76,492	36,895	1,181	5,622	-	263
number sold...1975..	34,315	31,965	950	-	1,400	-	-
Other chicken hens.....farms...1975..	910	698	25	32	138	11	6
number...1975..	30,711	22,596	1,521	572	5,586	285	151
number sold...1975..	1,292	900	200	-	192	-	-

¹Sweetsops included in "Other fruits" in 1970.

Table 3. Summary by Tenure of Operator: 1975 and 1970—Continued

	Total	Full owners	Part owners	Tenants	Permittees	Nonpermittees	Others
POULTRY ON FARM--Con.							
Chickens less than 4 months old ¹farms...1975..	605	450	19	39	83	9	5
number sold...1975..	53,332	38,457	11,045	672	2,662	137	359
Roosters and pullets ¹farms...1975..	100	65	35	-	-	-	-
number sold...1975..	861	679	29	38	101	9	5
Chickens 4 months old and over ²farms...1970..	14,271	10,229	364	1,026	2,600	20	32
number sold...1975..	350	350	-	-	-	-	-
All other poultry ²farms...1970..	888	718	3	34	98	30	5
number sold...1970..	126,636	114,203	140	1,523	9,233	1,185	352
Ducks ¹farms...1970..	130	105	1	1	16	7	-
number sold...1970..	4,864	4,303	100	7	394	60	-
Geese ¹farms...1975..	274	217	5	8	-	42	2
number sold...1975..	3,324	3,002	31	103	115	73	-
number sold...1975..	684	684	-	-	-	-	-
Guineas ¹farms...1975..	8	4	2	1	1	-	-
number sold...1975..	79	31	23	5	20	-	-
number sold...1975..	-	-	-	-	-	-	-
Pigeons ¹farms...1975..	1	1	-	-	-	-	-
number sold...1975..	20	20	-	-	-	-	-
number sold...1975..	-	-	-	-	-	-	-
Poultry products							
Chicken eggs.....farms...1975..	123	95	6	5	17	-	-
1970..	3,219	2,587	109	57	466	-	-
dozens sold...1975..	131	131	-	-	-	-	-
1970..	63	61	1	1	-	-	-
1970..	63	52	-	1	10	-	-
dozens sold...1975..	1,838,749	1,089,349	(D)	(D)	-	-	-
1970..	854,214	794,056	-	1,500	58,658	-	-
FISH							
Farms.....1975..	13	8	-	5	-	-	-
pounds harvested...1975..	6,880	3,727	153	3,000	-	-	-
pounds sold...1975..	1,790	1,790	-	-	-	-	-

¹Included in "Other poultry" in 1970.

²1975 data not available for these categories.

Table 4. Vegetables and Field Crops: 1964 to 1975

	1975	1970	1964		1975	1970	1964
Taro.....farms..	541	237	513	Head cabbage ¹farms..	54	(NA)	(NA)
hectares..	51	41	82	hectares..	7	(NA)	(NA)
pounds harvested..	111,580	72,783	153,232	pounds harvested..	12,545	(NA)	(NA)
pounds sold..	14,816	(NA)	(NA)	pounds sold..	7,885	(NA)	(NA)
Yams.....farms..	304	142	297	Chinese cabbage.....farms..	181	77	133
hectares..	20	17	39	hectares..	29	10	15
pounds harvested..	47,225	33,672	76,828	pounds harvested..	183,806	45,026	30,720
pounds sold..	3,145	(NA)	(NA)	pounds sold..	165,950	(NA)	(NA)
Sweet potatoes.....farms..	217	88	253	Green beans.....farms..	284	169	495
hectares..	17	4	32	hectares..	26	38	52
pounds harvested..	43,277	13,293	83,915	pounds harvested..	72,618	171,805	94,730
pounds sold..	10,895	(NA)	(NA)	pounds sold..	50,876	(NA)	(NA)
Cassava (tapioca).....farms..	379	77	272	Green onions.....farms..	252	85	127
hectares..	27	5	41	hectares..	11	9	20
pounds harvested..	85,216	13,581	95,815	pounds harvested..	31,082	24,536	18,611
pounds sold..	11,390	(NA)	(NA)	pounds sold..	17,435	(NA)	(NA)
Gado and other wild root crops.....farms..	89	48	164	Corn ²farms..	100	51	(NA)
hectares..	3	(NA)	(NA)	hectares..	14	15	40
pounds harvested..	15,005	18,521	56,450	pounds harvested..	39,696	29,315	104,439
pounds sold..	120	(NA)	(NA)	pounds sold..	20,530	(NA)	(NA)
Radishes.....farms..	127	38	74	Cucumbers.....farms..	180	83	157
hectares..	11	5	5	hectares..	25	42	34
pounds harvested..	23,862	18,204	9,191	pounds harvested..	212,959	245,182	125,538
pounds sold..	16,828	(NA)	(NA)	pounds sold..	173,684	(NA)	(NA)
Tomatoes.....farms..	283	94	116	Eggplants.....farms..	363	232	591
hectares..	28	21	19	hectares..	37	27	49
pounds harvested..	92,906	82,559	33,170	pounds harvested..	143,605	110,979	121,125
pounds sold..	68,150	(NA)	(NA)	pounds sold..	103,915	(NA)	(NA)

¹Not included in previous censuses.

²Includes dry and green corn.

Table 4. Vegetables and Field Crops: 1964 to 1975—Continued

	1975	1970	1964		1975	1970	1964
Peppers.....farms..	405	168	329	Muskmelons and pepinos ¹farms..	39	(NA)	(NA)
hectares..	17	15	12	hectares..	2	(NA)	(NA)
pounds harvested..	36,029	42,345	20,358	pounds harvested..	19,475	(NA)	(NA)
pounds sold..	9,415	(NA)	(NA)	pounds sold..	13,700	(NA)	(NA)
Pumpkins and squash.....farms..	292	111	238	Bittermelons ¹farms..	142	(NA)	(NA)
hectares..	21	9	34	hectares..	4	(NA)	(NA)
pounds harvested..	82,044	20,904	69,195	pounds harvested..	30,801	(NA)	(NA)
pounds sold..	21,170	(NA)	(NA)	pounds sold..	25,561	(NA)	(NA)
Watermelons ¹farms..	70	(NA)	(NA)	Other crops.....farms..	218	12	(NA)
hectares..	20	(NA)	(NA)	hectares..	15	(Z)	(NA)
pounds harvested..	115,066	(NA)	(NA)	pounds harvested..	31,119	1,082	(NA)
pounds sold..	91,750	(NA)	(NA)	pounds sold..	9,727	(NA)	(NA)
Cantaloupes ¹farms..	34	(NA)	(NA)				
hectares..	4	(NA)	(NA)				
pounds harvested..	21,103	(NA)	(NA)				
pounds sold..	18,095	(NA)	(NA)				

¹Watermelons, cantaloupes, muskmelons and pepinos, and bittermelons were included under "Melons" in 1970 and "Other melons" in 1964.

Table 5. Fruits and Nuts: 1964 to 1975

	1975	1970	1964		1975	1970	1964
Avocados.....farms..	675	535	759	Breadfruit.....farms..	322	212	374
trees..	8,055	3,244	3,277	trees..	2,144	1,983	(NA)
pounds harvested..	139,834	32,291	18,154	pounds harvested..	78,589	33,751	103,971
pounds sold..	25,568	(NA)	(NA)	pounds sold..	3,830	(NA)	(NA)
Bananas ¹farms..	1,051	751	(NA)	Coconuts.....farms..	940	683	795
hills..	94,317	62,193	123,618	trees..	50,046	46,461	(NA)
pounds harvested..	468,613	192,721	283,191	pounds harvested..	441,197	255,844	225,163
pounds sold..	89,143	(NA)	(NA)	pounds sold..	43,800	(NA)	(NA)
Grapefruit.....farms..	116	69	87	Betelnuts.....farms..	345	251	220
trees..	364	143	524	trees..	14,488	6,757	(NA)
pounds harvested..	9,958	3,907	1,795	pounds harvested..	18,154	15,874	65,610
pounds sold..	125	(NA)	(NA)	pounds sold..	3,010	(NA)	(NA)
Oranges.....farms..	279	248	499	Starfruit.....farms..	357	218	192
trees..	1,090	1,176	1,884	trees..	787	1,575	(NA)
pounds harvested..	26,027	9,716	6,453	pounds harvested..	21,878	7,040	11,195
pounds sold..	9,225	(NA)	(NA)	pounds sold..	920	(NA)	(NA)
Tangerines.....farms..	322	352	598	Guavas.....farms..	476	320	164
trees..	3,919	3,387	3,646	trees..	5,883	2,284	(NA)
pounds harvested..	54,748	32,801	4,701	pounds harvested..	19,031	6,636	7,046
pounds sold..	17,780	(NA)	(NA)	pounds sold..	900	(NA)	(NA)
Lemons and limes.....farms..	698	574	970	Soursops.....farms..	215	131	148
trees..	4,250	4,084	4,952	trees..	1,712	2,675	(NA)
pounds harvested..	73,487	58,229	23,579	pounds harvested..	11,626	13,645	8,937
pounds sold..	7,570	(NA)	(NA)	pounds sold..	-	(NA)	(NA)
Mangos.....farms..	524	484	639	Sweetsops ²farms..	199	(NA)	(NA)
trees..	2,747	1,740	2,352	trees..	858	(NA)	(NA)
pounds harvested..	77,744	49,407	4,602	pounds harvested..	7,423	(NA)	(NA)
pounds sold..	6,548	(NA)	(NA)	pounds sold..	200	(NA)	(NA)
Papayas.....farms..	567	378	440	Other fruits.....farms..	323	132	(NA)
trees..	18,011	3,292	4,034	plants or trees..	1,815	1,353	(NA)
pounds harvested..	101,346	22,089	16,263	pounds harvested..	21,838	3,223	(NA)
pounds sold..	41,774	(NA)	(NA)	pounds sold..	2,418	(NA)	(NA)
Pineapples.....farms..	101	117	219				
plants..	4,028	5,544	27,518				
pounds harvested..	6,539	6,229	10,680				
pounds sold..	100	(NA)	(NA)				

¹Includes eating and cooking bananas.

²Sweetsops included in "Other fruits" in 1970.

Table 6. Livestock, Poultry, and Fish: 1964 to 1975

	1975	1970	1964		1975	1970	1964
LIVESTOCK ON FARM				POULTRY ON FARM--Con.			
Carabaos.....farms..	93	45	194	Chickens less than 4 months old ¹ ...farms..	605	(NA)	(NA)
number..	223	149	726	number..	53,332	(NA)	(NA)
number sold..	2	(NA)	(NA)	number sold..	100	(NA)	(NA)
Cattle and calves.....farms..	333	284	1,006	Roosters and pullets ¹farms..	861	(NA)	(NA)
number..	2,647	2,650	5,891	number..	14,271	(NA)	(NA)
number sold..	161	(NA)	(NA)	number sold..	350	(NA)	(NA)
Milk cows.....farms..	85	54	47	Chickens 4 months old and over ²farms..	(NA)	888	2,187
number..	268	126	93	number..	(NA)	126,636	137,073
number sold..	10	(NA)	(NA)	All other poultry ²farms..	(NA)	130	(NA)
All other cattle and calves.....farms..	302	271	998	number..	(NA)	4,864	(NA)
number..	2,379	2,524	5,798	Ducks ¹farms..	274	(NA)	(NA)
number sold..	151	(NA)	(NA)	number..	3,324	(NA)	(NA)
Hogs and pigs.....farms..	1,064	598	1,228	number sold..	684	(NA)	(NA)
number..	8,245	4,348	4,722	Geese ¹farms..	8	(NA)	(NA)
number sold..	1,678	(NA)	(NA)	number..	79	(NA)	(NA)
Goats and kids.....farms..	152	75	251	number sold..	-	(NA)	(NA)
number..	968	458	1,501	Guineas ¹farms..	1	(NA)	(NA)
number sold..	43	(NA)	(NA)	number..	20	(NA)	(NA)
Horses and colts.....farms..	31	16	32	number sold..	-	(NA)	(NA)
number..	113	73	91	Pigeons ¹farms..	123	(NA)	(NA)
number sold..	11	(NA)	(NA)	number..	3,219	(NA)	(NA)
POULTRY ON FARM				number sold..	131	(NA)	(NA)
Chicken hens 4 months old and over..farms..	986	(NA)	(NA)	POULTRY PRODUCTS			
number..	151,164	(NA)	(NA)	Chicken eggs.....farms..	63	63	33
number sold..	35,607	(NA)	(NA)	dozens sold..	1,838,749	854,214	359,538
Commercial layers.....farms..	226	(NA)	(NA)	FISH			
number..	120,453	(NA)	(NA)	Fish.....farms..	13	(NA)	(NA)
number sold..	34,315	(NA)	(NA)	pounds harvested..	6,880	(NA)	(NA)
Other chicken hens.....farms..	910	(NA)	(NA)	pounds sold..	1,790	(NA)	(NA)
number..	30,711	(NA)	(NA)				
number sold..	1,292	(NA)	(NA)				

¹Included in "Other poultry" in 1970 and 1964.

²1975 data not available.

Table 7. Mechanical and Animal Power, by Ownership and Size of Farm: 1975 and 1970

	Farms reporting	Under 1 hectare	1 to 2 hectares	3 to 4 hectares	5 to 7 hectares	8 to 9 hectares	10 to 19 hectares	20 to 39 hectares	40 to 49 hectares	50 hectares and over
Mechanical power, total.....1975..	260	72	71	50	22	16	16	6	2	5
1970..	95	17	24	23	3	5	13	4	-	6
Tractors.....1975..	228	56	62	51	17	13	14	7	2	6
1970..	83	14	20	21	3	4	11	4	-	6
Owned by--										
Operator.....1975..	93	13	20	20	11	9	9	6	2	3
1970..	27	2	4	5	1	1	8	4	-	2
Operator and another.....1975..	8	2	3	2	-	1	-	-	-	-
1970..	3	1	1	-	-	-	-	-	-	1
Private contractor.....1975..	53	19	14	14	3	1	1	1	-	-
1970..	33	10	10	10	-	2	1	-	-	-
Government agency.....1975..	58	17	20	9	3	2	4	-	-	3
1970..	20	1	5	6	2	1	2	-	-	3
Other not listed.....1975..	16	5	5	6	-	-	-	-	-	-
Walking tractors.....1975..	70	11	19	18	7	3	6	3	-	3
Owned by--										
Operator.....1975..	49	5	11	15	7	2	4	3	-	2
1970..	4	1	3	-	-	-	-	-	-	-
Private contractor.....1975..	8	1	4	2	-	-	1	-	-	-
1970..	7	3	1	1	-	-	1	-	-	1
Government agency.....1975..	7	3	1	1	-	-	1	-	-	-
1970..	2	1	-	-	-	1	-	-	-	-

Table 7. Mechanical and Animal Power, by Ownership and Size of Farm: 1975 and 1970—Continued

	Farms reporting	Under 1 hectare	1 to 2 hectares	3 to 4 hectares	5 to 7 hectares	8 to 9 hectares	10 to 19 hectares	20 to 39 hectares	40 to 49 hectares	50 hectares and over
Mechanical power--Continued										
Other mechanical power.....	1975..	46	13	10	7	5	6	2	1	-
	1970..	39	9	8	12	2	1	5	2	-
Owned by--										
Operator.....	1975..	25	8	4	4	2	4	1	1	-
	1970..	12	3	2	2	-	-	3	2	-
Operator and another.....	1975..	2	1	1	-	-	-	-	-	-
	1970..	3	2	-	1	-	-	-	-	-
Private contractor.....	1975..	11	1	3	2	3	1	1	-	-
	1970..	8	2	3	1	-	1	1	-	-
Government agency.....	1975..	6	2	2	1	-	-	-	-	-
	1970..	16	2	3	8	2	-	1	-	-
Other not listed ¹	1975..	2	1	-	-	-	1	-	-	-
Animal power.....	1975..	18	7	6	2	2	-	1	-	-
	1970..	23	2	8	5	1	3	-	1	3
Owned by--										
Operator.....	1975..	16	6	5	2	2	-	1	-	-
	1970..	20	1	8	5	1	2	-	1	2
Operator and another.....	1975..	1	-	1	-	-	-	-	-	-
	1970..	1	1	-	-	-	-	-	-	-
Private contractor.....	1975..	-	-	-	-	-	-	-	-	-
	1970..	1	-	-	-	-	1	-	-	-
Government agency.....	1975..	1	-	-	-	-	-	-	-	-
	1970..	1	-	-	-	-	-	-	-	1
No power used.....	1975..	1,294	894	263	77	28	7	11	9	2
	1970..	927	458	292	86	30	14	21	14	4
Operators not reporting.....	1975..	2	1	-	-	1	-	-	-	-
	1970..	90	60	17	3	2	1	2	2	3

Table 8. Mechanical and Animal Power, by Ownership and Tenure of Operator: 1975 and 1970

	Farms reporting	Full owners	Part owners	Tenants	Permittees	Nonpermittees	Others
Mechanical power, total.....	1975..	260	157	15	10	71	5
	1970..	95	56	1	7	27	4
Tractors.....	1975..	228	137	10	6	69	5
	1970..	83	47	1	6	25	4
Owned by--							
Operator.....	1975..	93	56	8	4	21	3
	1970..	27	15	1	3	8	-
Operator and another.....	1975..	8	3	-	1	2	2
	1970..	3	2	-	-	-	1
Private contractor.....	1975..	53	30	2	-	21	-
	1970..	33	19	-	2	10	2
Government agency.....	1975..	58	42	-	1	15	-
	1970..	20	11	-	1	7	1
Other not listed.....	1975..	16	6	-	-	10	-
Walking tractor.....	1975..	70	42	-	3	22	3
Owned by--							
Operator.....	1975..	49	33	-	2	12	2
	1970..	4	2	-	-	1	1
Operator and another.....	1975..	4	2	-	-	-	-
	1970..	8	3	-	1	4	-
Private contractor.....	1975..	8	3	-	-	-	-
	1970..	7	3	-	-	4	-
Government agency.....	1975..	7	3	-	-	4	-
	1970..	2	1	-	-	1	-
Other not listed.....	1975..	2	1	-	-	-	-
Other mechanical power.....	1975..	46	28	3	3	12	-
	1970..	39	19	1	3	15	1
Owned by--							
Operator.....	1975..	25	17	2	2	4	-
	1970..	12	7	1	1	3	-
Operator and another.....	1975..	2	2	-	-	-	-
	1970..	3	2	-	-	1	-
Private contractor.....	1975..	11	7	-	-	4	-
	1970..	8	6	-	1	1	-
Government agency.....	1975..	6	1	-	1	4	-
	1970..	16	4	-	1	10	1
Other not listed.....	1975..	2	1	1	-	-	-

Table 8. Mechanical and Animal Power, by Ownership and Tenure of Operator: 1975 and 1970—Continued

	Farms reporting	Full owners	Part owners	Tenants	Permittees	Nonpermittees	Others
Animal power.....	1975..	18	16	-	-	2	-
	1970..	23	17	-	2	3	1
Owned by--							
Operator.....	1975..	16	15	-	-	1	-
	1970..	20	14	-	2	3	1
Operator and another.....	1975..	1	-	-	-	1	-
	1970..	1	1	-	-	-	-
Private contractor.....	1975..	-	-	-	-	-	-
	1970..	1	1	-	-	-	-
Government agency.....	1975..	1	1	-	-	-	-
	1970..	1	1	-	-	-	-
No power used.....	1975..	1,294	1,016	38	71	149	12
	1970..	927	767	3	38	80	33
Operators not reporting.....	1975..	2	2	-	-	-	-
	1970..	90	87	-	2	1	-

Table 9. Farm Location, Labor Status, Specified Facilities, Type of Holding, and Source of Financing, by Size of Farm: 1975

	Total	Under 1 hectare	1 to 2 hectares	3 to 4 hectares	5 to 7 hectares	8 to 9 hectares	10 to 19 hectares	20 to 39 hectares	40 to 49 hectares	50 hectares and over
FARM LOCATION										
Farms.....	1,576	968	357	122	47	23	27	18	4	10
On hard-surface road.....	778	489	179	61	17	12	5	8	2	5
Off hard-surface road.....	793	477	176	60	30	11	22	10	2	5
Less than 1 mile.....	622	409	135	23	21	8	13	7	2	4
1 to 4 miles.....	159	62	37	35	9	3	9	3	-	1
5 to 9 miles.....	10	5	3	2	-	-	-	-	-	-
10 miles or more.....	2	1	1	-	-	-	-	-	-	-
Not reporting.....	5	2	2	1	-	-	-	-	-	-
LABOR STATUS										
Unpaid labor.....										
.....farms..	1,551	968	308	122	47	19	27	18	2	8
.....farm hands..	3,249	1,940	711	263	108	70	83	48	4	22
Less than 25 days.....	138	82	33	9	3	6	2	2	1	-
.....farm hands..	232	150	34	10	13	9	6	9	1	-
25 to 149 days.....	615	385	149	26	13	10	7	19	2	4
.....farm hands..	1,386	800	305	121	31	16	54	44	2	13
150 days or more.....	779	388	227	75	35	14	20	11	2	7
.....farm hands..	1,731	912	423	174	139	25	23	11	12	12
Paid labor.....										
.....farms..	20	3	3	4	4	-	4	1	-	1
.....farm hands..	147	4	9	38	10	-	17	1	-	68
Less than 25 days.....	2	1	-	-	1	-	-	-	-	-
.....farm hands..	11	9	-	-	2	-	-	-	-	-
25 to 149 days.....	6	2	1	1	1	-	-	1	-	-
.....farm hands..	5	1	1	1	1	-	-	1	-	-
150 days or more.....	12	1	1	1	1	3	1	1	1	2
.....farm hands..	131	1	4	3	8	31	8	2	4	70
Not reporting.....	5	1	-	-	-	2	1	-	1	-
SPECIFIED FACILITIES										
Running water.....	1,409	882	295	112	47	23	23	13	6	8
Electricity.....	1,338	875	273	95	37	17	21	11	3	6
TYPE OF HOLDING										
For home consumption.....	1,408	916	321	89	30	18	14	10	3	7
For sale.....	168	52	36	33	17	5	13	8	1	3
Crops.....	68	19	21	14	10	1	3	-	-	-
Livestock and poultry.....	50	14	9	15	2	1	4	5	-	-
Mixed.....	41	16	6	4	4	3	6	-	-	2
Other.....	9	3	-	-	1	-	-	3	1	1
SOURCE OF FINANCING										
Farm operations financed by--										
Operator.....	1,437	854	342	111	49	29	24	18	3	7
1 to 24 percent.....	8	8	-	-	-	-	-	-	-	-
25 to 49 percent.....	7	7	-	-	-	-	-	-	-	-
50 to 74 percent.....	46	28	7	3	2	-	4	2	-	-
75 to 99 percent.....	19	14	5	-	-	-	-	-	-	-
100 percent.....	1,357	797	330	108	47	29	20	16	3	7

Table 9. Farm Location, Labor Status, Specified Facilities, Type of Holding, and Source of Financing, by Size of Farm: 1975—Continued

SOURCE OF FINANCING--Con.	Total	Under 1	1 to 2	3 to 4	5 to 7	8 to 9	10 to 19	20 to 39	40 to 49	50 hectares
		hectare	hectares	hectares	hectares	hectares	hectares	hectares	hectares	and over
Farm operations financed by--Continued										
Private.....number..	67	42	13	5	3	1	-	1	-	2
1 to 24 percent.....	4	4	-	-	-	-	-	-	-	-
25 to 49 percent.....	3	3	-	-	-	-	-	-	-	-
50 to 74 percent.....	12	7	2	1	2	-	-	-	-	-
75 to 99 percent.....	1	1	-	-	-	-	-	-	-	-
100 percent.....	47	27	11	4	1	1	-	1	-	2
Commercial.....number..	64	61	3	-	-	-	-	-	-	-
1 to 24 percent.....	6	6	-	-	-	-	-	-	-	-
25 to 49 percent.....	13	13	-	-	-	-	-	-	-	-
50 to 74 percent.....	24	24	-	-	-	-	-	-	-	-
75 to 99 percent.....	4	1	3	-	-	-	-	-	-	-
100 percent.....	17	17	-	-	-	-	-	-	-	-
Government.....number..	44	24	6	4	3	1	1	3	-	2
1 to 24 percent.....	11	4	2	2	-	-	-	2	-	1
25 to 49 percent.....	5	3	1	-	-	1	-	-	-	-
50 to 74 percent.....	7	4	1	1	1	-	-	-	-	-
75 to 99 percent.....	8	3	1	1	1	-	1	1	-	-
100 percent.....	13	10	1	-	1	-	-	-	-	1
Other.....number..	86	24	11	5	2	3	6	11	13	11
1 to 24 percent.....	3	1	1	-	1	-	-	-	-	-
25 to 49 percent.....	-	-	-	-	-	-	-	-	-	-
50 to 74 percent.....	1	1	-	-	-	-	-	-	-	-
75 to 99 percent.....	5	1	-	1	-	-	1	1	-	1
100 percent.....	77	21	10	4	1	3	5	10	13	10
Not reporting.....	11	3	2	-	-	-	-	-	-	6

Table 10. Land Area, Farms, and Land in Farms, by Election Districts: 1975 and 1970

	Land area, 1975		Farms		Land in farms (hectares)			
	Square miles ¹	Hectares	1975	1970	Total		Average size of farm	
					1975	1970	1975	1970
Guam. total.....	209	54,131	1,576	1,121	12,046	10,586	7.6	9.4
Agana.....	1	259	4	39	8	52	2.0	1.3
Agana Heights.....	1	259	90	69	140	182	1.6	2.6
Agat.....	10	2,590	85	93	76	151	0.9	1.6
Asan.....	6	1,554	85	22	77	79	0.9	3.6
Barrigada.....	9	2,331	105	114	310	163	3.0	1.4
Chalan Pago and Ordot.....	6	1,554	48	36	130	126	2.7	3.5
Dededo.....	30	7,770	240	168	448	309	1.9	1.8
Inarajan.....	19	4,921	119	59	296	2,230	2.5	37.8
Mangilao.....	10	2,590	140	64	4,861	2,028	34.7	31.7
Merizo.....	6	1,554	115	12	125	48	1.1	4.0
Mongmong, Toto, and Maite.....	2	518	13	46	27	80	2.1	1.7
Piti.....	7	1,813	20	4	80	3	4.0	0.8
Santa Rita.....	17	4,403	114	80	249	85	2.2	1.1
Sinajana.....	1	259	7	12	11	18	1.6	1.5
Talofofo.....	17	4,403	81	75	1,816	436	22.4	5.8
Tamuning.....	6	1,554	26	48	13	313	0.5	6.5
Umatac.....	6	1,554	50	9	50	16	1.0	1.8
Yigo.....	35	9,065	164	82	472	367	2.9	4.5
Yona.....	20	5,180	70	89	2,857	3,900	40.8	43.8

¹One square mile equals 259 hectares.

Table 9. Farm Location, Labor Status, Specified Facilities, Type of Holding, and Source of Financing, by Size of Farm: 1975—Continued

SOURCE OF FINANCING--Con.	Total	Under 1 hectare	1 to 2 hectares	3 to 4 hectares	5 to 7 hectares	8 to 9 hectares	10 to 19 hectares	20 to 39 hectares	40 to 49 hectares	50 hectares and over
Farm operations financed by--Continued										
Private.....number..	67	42	13	5	3	1	-	1	-	2
1 to 24 percent.....	4	4	-	-	-	-	-	-	-	-
25 to 49 percent.....	3	3	-	-	-	-	-	-	-	-
50 to 74 percent.....	12	7	2	1	2	-	-	-	-	-
75 to 99 percent.....	1	1	-	-	-	-	-	-	-	-
100 percent.....	47	27	11	4	1	1	-	1	-	2
Commercial.....number..	64	61	3	-	-	-	-	-	-	-
1 to 24 percent.....	6	6	-	-	-	-	-	-	-	-
25 to 49 percent.....	13	13	-	-	-	-	-	-	-	-
50 to 74 percent.....	24	24	-	-	-	-	-	-	-	-
75 to 99 percent.....	4	1	3	-	-	-	-	-	-	-
100 percent.....	17	17	-	-	-	-	-	-	-	-
Government.....number..	44	24	6	4	3	1	1	3	-	2
1 to 24 percent.....	11	4	2	2	-	-	-	2	-	1
25 to 49 percent.....	5	3	1	-	-	1	-	-	-	-
50 to 74 percent.....	7	4	1	1	1	-	-	-	-	-
75 to 99 percent.....	8	3	1	1	1	-	1	1	-	-
100 percent.....	13	10	1	-	1	-	-	-	-	1
Other.....number..	86	24	11	5	2	3	6	11	13	11
1 to 24 percent.....	3	1	1	-	1	-	-	-	-	-
25 to 49 percent.....	-	-	-	-	-	-	-	-	-	-
50 to 74 percent.....	1	1	-	-	-	-	-	-	-	-
75 to 99 percent.....	5	1	-	1	-	-	1	1	-	1
100 percent.....	77	21	10	4	1	3	5	10	13	10
Not reporting.....	11	3	2	-	-	-	-	-	-	6

Table 10. Land Area, Farms, and Land in Farms, by Election Districts: 1975 and 1970

	Land area, 1975		Farms		Land in farms (hectares)			
	Square miles ¹	Hectares	1975	1970	Total		Average size of farm	
					1975	1970	1975	1970
Guam. total.....	209	54,131	1,576	1,121	12,046	10,586	7.6	9.4
Agana.....	1	259	4	39	8	52	2.0	1.3
Agana Heights.....	1	259	90	69	140	182	1.6	2.6
Agat.....	10	2,590	85	93	76	151	0.9	1.6
Asan.....	6	1,554	85	22	77	79	0.9	3.6
Barrigada.....	9	2,331	105	114	310	163	3.0	1.4
Chalan Pago and Ordot.....	6	1,554	48	36	130	126	2.7	3.5
Dededo.....	30	7,770	240	168	448	309	1.9	1.8
Inarajan.....	19	4,921	119	59	296	2,230	2.5	37.8
Mangilao.....	10	2,590	140	64	4,861	2,028	34.7	31.7
Merizo.....	6	1,554	115	12	125	48	1.1	4.0
Mongmong, Toto, and Maite.....	2	518	13	46	27	80	2.1	1.7
Piti.....	7	1,813	20	4	80	3	4.0	0.8
Santa Rita.....	17	4,403	114	80	249	85	2.2	1.1
Sinajana.....	1	259	7	12	11	18	1.6	1.5
Talofofo.....	17	4,403	81	75	1,816	436	22.4	5.8
Tamuning.....	6	1,554	26	48	13	313	0.5	6.5
Umatac.....	6	1,554	50	9	50	16	1.0	1.8
Yigo.....	35	9,065	164	82	472	367	2.9	4.5
Yona.....	20	5,180	70	89	2,857	3,900	40.8	43.8

¹One square mile equals 259 hectares.

Table 11. Farms and Land in Farms, by Land Use and by Election Districts: 1975 and 1970

	Total		Cropland						Pastureland				Other land	
			Used for crops		Used for pasture		Not used for crops or pasture		Used for pasture or grazing		Not used for pasture or grazing			
	1975	1970	1975	1970	1975	1970	1975	1970	1975	1970	1975	1970	1975	1970
Farms														
Guam, total.....	1,576	1,121	1,314	781	140	134	532	101	192	112	69	91	851	841
Agana.....	4	39	2	15	-	-	3	-	-	2	-	-	1	38
Agana Heights.....	90	69	86	47	-	8	-	3	-	1	-	1	86	54
Agat.....	85	93	59	81	1	18	18	9	9	-	-	7	71	51
Asan.....	85	22	82	14	7	3	7	3	2	-	1	1	71	21
Barrigada.....	105	114	72	72	9	8	25	3	15	3	5	1	92	98
Chalan Pago and Ordot.....	48	36	24	22	3	11	38	6	-	2	4	2	4	28
Dededo.....	240	168	154	121	22	15	20	23	39	8	16	20	153	132
Inarajan.....	119	59	110	40	12	12	86	10	10	9	3	8	2	47
Mangilao.....	140	64	130	46	34	11	21	7	41	12	15	11	117	50
Merizo.....	115	12	104	12	4	2	85	-	-	3	1	-	24	6
Mongmong, Toto, and Maite.....	13	46	11	37	-	2	-	1	1	5	-	-	13	45
Piti.....	20	4	20	2	8	-	7	-	6	1	2	-	16	4
Santa Rita.....	114	80	113	71	3	1	96	3	2	2	-	2	5	70
Sinajana.....	7	12	4	12	2	3	6	1	-	-	-	-	-	6
Talofofo.....	81	75	70	51	8	10	24	8	5	21	2	1	39	45
Tamuning.....	26	48	17	13	-	1	2	8	-	3	-	3	23	41
Umatac.....	50	9	48	6	7	2	7	-	9	3	1	-	18	7
Yigo.....	164	82	144	66	15	2	29	9	45	13	14	28	94	34
Yona.....	70	89	64	53	5	25	8	7	8	24	5	6	22	64
Land in farms (hectares)														
Guam, total.....	12,046	10,586	936	900	516	2,681	4,662	758	5,059	3,836	56	558	817	1,853
Agana.....	8	52	2	28	-	-	6	-	-	(2)	-	-	(2)	24
Agana Heights.....	140	182	32	37	-	37	-	12	-	2	-	10	108	84
Agat.....	76	151	16	53	(2)	21	16	7	-	-	-	9	44	61
Asan.....	77	79	29	23	2	22	2	11	6	-	3	2	35	21
Barrigada.....	310	163	47	65	54	3	54	(2)	23	2	2	1	130	92
Chalan Pago and Ordot.....	130	126	32	15	49	18	37	18	-	41	5	2	7	32
Dededo.....	448	309	97	82	24	9	72	76	72	6	17	43	166	93
Inarajan.....	296	2,230	121	133	36	1,073	84	127	47	356	6	349	2	192
Mangilao.....	4,861	2,028	130	36	17	1,121	3,945	165	743	527	10	56	16	123
Merizo.....	125	48	46	30	17	2	56	-	-	2	(2)	-	6	14
Mongmong, Toto, and Maite.....	27	80	5	16	-	23	-	(2)	10	4	-	-	12	37
Piti.....	80	3	21	(2)	32	-	6	-	2	(2)	(2)	-	19	3
Santa Rita.....	249	85	44	25	1	(2)	201	10	1	1	-	2	2	47
Sinajana.....	11	18	2	12	1	3	8	1	-	-	-	-	-	2
Talofofo.....	1,816	436	90	60	235	79	127	39	1,261	131	1	1	102	126
Tamuning.....	13	313	2	7	-	1	1	15	-	233	-	26	10	31
Umatac.....	50	16	27	3	2	2	2	-	5	7	(2)	-	14	4
Yigo.....	472	367	129	138	28	6	32	112	150	28	10	36	123	47
Yona.....	2,857	3,900	64	137	18	261	13	165	2,739	2,496	2	21	21	820

Table 12. Farms and Land in Farms, by Size of Farm and by Election Districts: 1975 and 1970

	Total		Under 1 hectare		1 to 2 hectares		3 to 4 hectares		5 to 7 hectares		8 to 9 hectares		10 to 19 hectares		20 to 39 hectares		40 to 49 hectares		50 hectares and over	
	1975	1970	1975	1970	1975	1970	1975	1970	1975	1970	1975	1970	1975	1970	1975	1970	1975	1970	1975	1970
Farms																				
Guam, total....	1,576	1,121	968	535	357	337	122	114	47	36	23	20	27	36	18	20	4	5	10	18
Agana.....	4	39	1	26	2	10	1	1	-	-	-	-	-	1	-	1	-	-	-	-
Agana Heights.....	90	69	67	36	12	27	7	1	1	-	-	1	1	2	1	1	-	-	-	1
Agat.....	85	93	66	25	12	52	3	13	2	2	1	-	1	1	-	-	-	-	-	-
Asan.....	85	22	66	11	12	7	3	1	2	1	1	-	-	-	1	2	-	-	-	-
Barrigada.....	105	114	65	47	25	53	8	8	-	3	3	1	2	2	-	-	-	-	2	-
Chalan Pago and Ordot..	48	36	18	19	19	6	7	6	1	2	2	1	-	1	-	-	1	-	-	1
Dededo.....	240	168	154	94	42	38	28	26	7	2	3	2	2	4	3	2	-	-	1	-
Inajaran.....	119	59	62	24	30	16	11	2	8	3	2	3	5	2	-	5	1	-	-	4
Mangilao.....	140	64	95	40	29	10	6	4	5	3	-	1	2	-	-	2	-	2	3	2
Merizo.....	115	12	74	2	30	4	7	2	2	2	-	-	1	2	1	-	-	-	-	-
Mongmong, Toto, Maite..	13	46	4	27	8	15	-	2	-	-	-	-	1	1	-	1	-	-	-	-
Piti.....	20	4	10	1	2	3	3	-	2	-	-	-	2	-	1	-	-	-	-	-
Santa Rita.....	114	80	92	55	18	20	3	2	-	2	-	-	-	1	-	-	-	-	1	-
Sinajana.....	7	12	4	8	2	1	1	2	-	-	-	1	-	-	-	-	-	-	-	-
Talofofo.....	81	75	33	31	25	19	8	7	4	4	4	2	2	6	2	3	1	2	2	1
Tamuning.....	26	48	23	36	2	5	-	3	-	1	1	-	-	2	-	-	-	-	-	1
Umatac.....	50	9	21	4	25	4	4	-	-	-	-	-	-	1	-	-	-	-	-	-
Yigo.....	164	82	83	23	35	22	18	20	12	5	3	3	6	6	7	2	-	-	-	-
Yona.....	70	89	30	26	27	25	4	14	1	6	3	5	2	4	2	1	-	1	1	7
Land in farms ¹ (hectares)																				
Guam, total....	12,046	10,586	268	166	496	459	451	386	293	218	194	174	369	457	427	545	173	229	9,375	7,952
Agana.....	8	52	1	4	4	10	3	3	-	-	-	-	-	15	-	20	-	-	-	-
Agana Heights.....	140	182	16	12	18	36	25	5	5	-	-	10	11	28	24	26	41	-	-	65
Agat.....	76	151	17	13	17	73	10	39	14	12	8	-	10	14	-	-	-	-	-	-
Asan.....	77	79	14	4	16	9	10	4	8	6	8	-	-	-	21	56	-	-	-	-
Barrigada.....	310	163	17	11	38	66	30	27	-	19	25	9	26	31	-	-	-	-	174	-
Chalan Pago and Ordot..	130	126	9	5	26	9	24	21	7	12	18	9	-	10	-	-	46	-	-	60
Dededo.....	448	309	50	29	59	58	112	90	42	12	25	16	31	41	79	63	-	-	50	-
Inajaran.....	296	2,230	11	6	48	22	37	7	47	22	19	27	88	23	-	118	46	-	-	2,005
Mangilao.....	4,861	2,028	33	7	44	12	23	13	31	18	-	9	31	-	-	60	-	96	4,699	1,813
Merizo.....	125	48	14	1	39	8	21	7	13	12	-	-	15	20	23	-	-	-	-	-
Mongmong, Toto, Maite..	27	80	1	13	11	18	-	6	-	-	-	-	15	18	-	25	-	25	-	-
Piti.....	80	3	2	(Z)	3	3	9	-	12	-	-	-	29	-	25	-	-	-	-	-
Santa Rita.....	249	85	20	22	23	26	10	6	-	13	-	-	-	18	-	-	-	-	196	-
Sinajana.....	11	18	3	(Z)	4	2	4	7	-	-	-	9	-	-	-	-	-	-	-	-
Talofofo.....	1,816	436	10	7	32	29	31	26	24	24	34	18	30	87	59	96	40	88	1,556	61
Tamuning.....	13	313	2	14	3	6	-	10	-	6	8	-	-	27	-	-	-	-	-	250
Umatac.....	50	16	5	1	31	5	14	-	-	-	-	-	-	10	-	-	-	-	-	-
Yigo.....	472	367	37	6	47	32	72	68	85	30	25	26	62	68	144	57	-	-	-	80
Yona.....	2,857	3,900	6	11	33	35	16	47	5	32	24	41	21	47	52	24	-	45	2,700	3,618

¹Detail may not add to total due to rounding.

Table 13. Farms and Land in Farms, by Tenure of Operator and by Election Districts: 1975 and 1970

	Total		Full owners		Part owners		Tenants		Permittees		Nonpermittees		Other	
	1975	1970	1975	1970	1975	1970	1975	1970	1975	1970	1975	1970	1975	1970
Farms														
Guam, total.....	1,576	1,121	1,208	913	45	4	81	47	216	114	16	37	10	6
Agana.....	4	39	4	35	-	-	-	4	-	-	-	-	-	-
Agana Heights.....	90	69	78	69	2	-	10	-	-	-	-	-	-	-
Agat.....	85	93	59	80	4	-	16	2	5	10	1	-	-	1
Asan.....	85	22	76	21	3	-	4	-	2	-	-	1	-	-
Barrigada.....	105	114	93	105	3	-	7	-	2	4	-	5	-	-
Chalan Pago and Ordot.....	48	36	46	35	-	-	1	1	1	-	-	-	-	-
Dededo.....	240	168	111	89	1	1	8	3	115	60	6	15	-	-
Inajaran.....	119	59	110	44	3	2	2	7	3	3	-	-	1	3
Mangilao.....	140	64	120	63	4	-	3	-	6	-	-	1	7	-
Merizo.....	115	12	104	10	3	-	2	1	5	-	-	1	1	-
Mongmong, Toto, and Maite.....	13	46	10	45	1	-	1	-	-	-	1	1	-	-
Piti.....	20	4	20	4	-	-	-	-	-	-	-	-	-	-
Santa Rita.....	114	80	92	78	9	-	10	-	1	1	-	-	-	1
Sinajana.....	7	12	7	10	-	-	-	-	-	-	-	2	-	-
Talofofo.....	81	75	57	47	2	-	6	11	11	14	4	2	1	1
Tamuning.....	26	48	23	43	-	-	1	3	1	1	1	1	-	-
Umatac.....	50	9	25	6	2	-	-	1	20	2	1	-	-	-
Yigo.....	164	82	109	63	8	-	6	2	41	15	2	2	-	-
Yona.....	70	89	64	66	-	1	4	12	3	4	-	6	-	-
Land in farms (hectares)														
Guam, total.....	12,046	10,586	11,396	9,850	145	72	91	222	366	239	32	199	16	4
Agana.....	8	52	8	51	-	-	-	1	-	-	-	-	-	-
Agana Heights.....	140	182	96	182	(2)	-	1	-	43	-	-	-	-	-
Agat.....	76	151	55	139	14	-	2	1	4	11	1	-	-	(2)
Asan.....	77	79	68	79	8	-	(2)	-	1	-	-	(2)	-	-
Barrigada.....	310	163	291	154	5	-	7	-	7	8	-	1	-	-
Chalan Pago and Ordot.....	130	126	128	126	-	-	1	(2)	1	-	-	-	-	-
Dededo.....	448	309	235	164	4	3	18	1	186	122	5	19	-	-
Inajaran.....	296	2,230	261	2,022	20	24	6	150	4	32	-	-	5	2
Mangilao.....	4,861	2,028	4,845	2,028	3	-	1	-	6	-	-	(2)	6	-
Merizo.....	125	48	122	35	1	-	(2)	10	1	-	-	3	1	-
Mongmong, Toto, and Maite.....	27	80	9	80	16	-	-	-	-	-	2	(2)	-	-
Piti.....	80	3	80	3	-	-	-	-	-	-	-	-	-	-
Santa Rita.....	249	85	241	83	4	-	3	-	1	1	-	-	-	1
Sinajana.....	11	18	11	18	-	-	-	-	-	-	-	(2)	-	-
Talofofo.....	1,816	436	1,720	393	24	-	35	25	23	16	10	1	4	1
Tamuning.....	13	313	13	306	-	-	(2)	3	(2)	1	(2)	3	-	-
Umatac.....	50	16	31	12	2	-	-	1	17	3	-	-	-	-
Yigo.....	472	367	337	323	44	-	10	1	67	40	14	3	-	-
Yona.....	2,857	3,900	2,845	3,652	-	45	7	29	5	5	-	169	-	-

Table 14. Farms and Land in Farms, by Ownership and by Election Districts: 1975 and 1970

	Total		Owned		Rented to others		Rented from others		Occupied by permit		Occupied without permit		Furnished by Government	
	1975	1970	1975	1970	1975	1970	1975	1970	1975	1970	1975	1970	1975	1970
Farms														
Guam, total.....	1,576	1,121	1,259	924	45	8	104	49	311	147	42	53	22	12
Agana.....	4	39	4	35	-	1	-	4	-	-	-	-	-	-
Agana Heights.....	90	69	77	69	3	-	10	-	-	2	-	-	-	-
Agat.....	85	93	64	82	3	-	17	-	13	17	2	-	-	2
Asan.....	85	22	79	21	2	-	7	-	11	-	1	4	-	-
Barrigada.....	105	114	97	107	10	2	11	1	11	6	2	6	-	-
Chalan Pago and Ordot.....	48	36	46	36	-	-	1	-	2	-	3	1	4	-
Dededo.....	238	168	109	90	-	1	6	4	121	59	11	17	1	-
Inarajan.....	119	59	115	47	2	3	2	9	5	8	1	2	1	4
Mangilao.....	140	64	130	63	1	1	4	-	15	1	-	1	9	1
Merizo.....	115	12	107	10	2	-	3	1	8	-	2	1	1	-
Mongmong, Toto, and Maite.....	13	46	11	45	-	-	1	-	2	-	1	1	-	-
Piti.....	20	4	20	4	-	-	1	-	3	-	-	-	3	-
Santa Rita.....	114	80	100	78	17	-	17	-	8	4	3	1	-	1
Sinajana.....	7	12	7	10	-	-	-	-	-	-	-	2	1	-
Talofofo.....	82	75	63	47	3	-	10	12	25	19	8	3	-	2
Tamuning.....	26	48	22	43	1	-	1	3	2	2	2	1	1	-
Umatac.....	50	9	30	6	-	-	-	1	26	4	1	-	1	1
Yigo.....	165	82	115	64	1	-	8	1	52	17	3	2	-	-
Yona.....	70	89	63	67	-	-	5	13	4	8	2	11	-	1
Land in farms (hectares)														
Guam, total.....	12,046	10,586	10,902	9,660	74	20	129	262	860	371	69	262	12	11
Agana.....	8	52	8	50	-	1	-	1	-	-	-	-	-	-
Agana Heights.....	139	182	94	180	1	-	1	-	43	2	-	-	-	-
Agat.....	78	151	50	131	(2)	-	11	-	16	18	1	-	-	2
Asan.....	77	79	60	75	(2)	-	7	-	9	-	1	4	-	-
Barrigada.....	311	163	271	147	12	2	6	1	20	10	2*	3	-	-
Chalan Pago and Ordot.....	130	126	120	122	-	-	1	-	2	-	3	4	4	-
Dededo.....	454	309	208	163	-	1	18	3	220	121	8	21	(2)	-
Inarajan.....	290	2,230	260	1,899	4	16	14	141	6	123	4	48	2	3
Mangilao.....	4,861	2,028	4,544	2,027	(2)	(2)	1	-	314	(2)	-	(2)	2	1
Merizo.....	125	48	120	35	(2)	-	(2)	10	4	-	1	3	(2)	-
Mongmong, Toto, and Maite.....	27	80	9	80	-	-	1	-	15	-	2	(2)	-	-
Piti.....	80	3	78	3	-	-	(2)	-	(2)	-	-	-	2	-
Santa Rita.....	249	85	200	82	41	-	5	-	2	2	1	(2)	-	1
Sinajana.....	11	18	10	18	-	-	-	-	-	-	-	(2)	1	-
Talofofo.....	1,816	436	1,670	377	16	-	46	31	58	24	26	1	-	3
Tamuning.....	13	313	8	306	(2)	-	(2)	1	5	3	(2)	3	(2)	-
Umatac.....	50	16	30	5	-	-	-	1	19	9	(2)	-	1	1
Yigo.....	470	367	323	317	(2)	-	10	1	122	46	15	3	-	-
Yona.....	2,857	3,900	2,839	3,643	-	-	8	72	5	13	5	172	-	-

Table 15. Vegetables and Field Crops, by Election Districts: 1975 and 1970

	Taro							Yams						
	Farms		Hectares		Pounds			Farms		Hectares		Pounds		
					Harvested		Sold, 1975					Harvested		Sold, 1975
	1975	1970	1975	1970	1975	1970		1975	1970	1975	1970			
Guam, total.....	541	237	51	41	111,580	72,783	14,816	304	142	20	17	47,225	33,672	3,145
Agana.....	2	1	(Z)	(Z)	350	50	200	2	2	1	(Z)	750	150	400
Agana Heights.....	13	12	(Z)	1	690	912	-	13	8	(Z)	1	475	467	-
Agat.....	20	19	1	1	6,215	2,918	5,500	11	13	1	1	4,210	1,725	250
Asan.....	44	7	1	8	3,275	10,855	-	29	3	(Z)	4	2,370	6,160	-
Barrigada.....	36	11	1	2	9,585	1,143	-	24	11	(Z)	(Z)	1,790	648	280
Chalan Pago and Ordot.....	4	10	12	1	595	2,160	-	2	7	1	(Z)	525	1,315	-
Dededo.....	75	47	11	5	21,285	11,625	3,300	49	25	6	1	5,680	2,360	-
Inarajan.....	33	13	5	3	7,021	7,750	1,380	10	4	1	1	1,920	925	250
Mangilao.....	53	10	2	1	5,573	1,623	150	38	7	1	(Z)	3,517	930	50
Merizo.....	22	2	1	(Z)	2,661	150	325	11	-	(Z)	-	3,080	-	1,150
Mongmong, Toto, and Maite.....	3	11	(Z)	1	1,930	1,398	-	1	4	(Z)	(Z)	40	212	-
Piti.....	10	-	1	-	1,960	-	-	7	-	(Z)	-	735	-	-
Santa Rita.....	42	16	1	1	3,425	1,957	-	18	9	(Z)	(Z)	1,823	721	-
Sinajana.....	2	2	(Z)	(Z)	300	250	-	1	2	(Z)	(Z)	30	120	-
Talofofo.....	34	19	2	7	13,460	14,680	470	16	9	3	1	8,725	1,200	15
Tamuning.....	7	3	1	(Z)	606	110	16	-	1	-	(Z)	-	10	-
Umatac.....	25	4	1	(Z)	3,305	855	-	13	2	(Z)	(Z)	2,410	420	-
Yigo.....	86	30	9	4	19,121	6,227	3,475	42	21	5	5	5,050	11,531	750
Yona.....	30	20	2	6	10,223	8,120	-	17	14	1	3	4,095	4,778	-
	Sweetpotatoes							Cassava (tapioca)						
	Farms		Hectares		Pounds			Farms		Hectares		Pounds		
					Harvested		Sold, 1975					Harvested		Sold, 1975
	1975	1970	1975	1970	1975	1970		1975	1970	1975	1970			
	1975	1970	1975	1970	1975	1970	1975	1970	1975	1970	1975	1970		
Guam, total.....	217	88	17	4	43,277	13,293	10,895	379	77	27	5	85,216	13,581	11,390
Agana.....	1	1	(Z)	(Z)	300	50	250	2	1	(Z)	(Z)	120	150	50
Agana Heights.....	9	6	(Z)	(Z)	285	870	-	18	7	(Z)	(Z)	1,575	1,031	-
Agat.....	8	9	(Z)	(Z)	1,733	949	-	15	13	1	(Z)	5,560	1,410	-
Asan.....	14	-	(Z)	-	1,876	-	375	44	-	(Z)	-	3,275	-	-
Barrigada.....	16	6	1	(Z)	4,435	405	1,550	29	4	(Z)	(Z)	3,515	650	100
Chalan Pago and Ordot.....	1	1	1	(Z)	50	5	-	3	1	1	1	313	300	-
Dededo.....	58	28	7	1	15,971	3,770	3,345	58	21	7	1	13,428	3,000	3,190
Inarajan.....	6	-	1	-	1,560	-	500	16	2	3	1	3,570	1,500	700
Mangilao.....	23	10	1	1	1,730	2,074	-	34	10	2	(Z)	13,815	880	3,000
Merizo.....	2	1	(Z)	1	325	3,000	300	11	-	(Z)	-	1,540	-	-
Mongmong, Toto, and Maite.....	-	2	-	(Z)	-	60	-	-	-	-	-	-	-	-
Piti.....	2	-	(Z)	-	50	-	-	6	1	(Z)	(Z)	650	40	-
Santa Rita.....	20	1	(Z)	(Z)	1,872	50	-	36	-	1	-	5,495	-	-
Sinajana.....	1	-	(Z)	-	10	-	-	1	-	(Z)	-	(Z)	-	-
Talofofo.....	8	4	1	(Z)	6,230	800	3,700	21	7	4	1	16,725	2,650	3,250
Tamuning.....	5	-	(Z)	-	200	-	-	1	-	(Z)	-	30	-	-
Umatac.....	-	2	-	(Z)	-	65	-	14	3	(Z)	(Z)	1,445	320	-
Yigo.....	40	13	4	1	6,450	1,105	875	48	6	7	1	7,935	1,450	1,100
Yona.....	3	4	1	(Z)	200	90	-	22	1	1	(Z)	6,225	200	-

Table 15. Vegetables and Field Crops, by Election Districts: 1975 and 1970—Continued

	Gado and other wild root crops						Radishes						
	Farms		Hectares,	Pounds		Sold, 1975	Farms		Hectares		Pounds		
				Harvested							Harvested	1975	1970
	1975	1970		1975	1970		1975	1970					
Guam, total.....	89	48	3	15,005	18,521	120	127	38	11	5	23,862	18,204	16,828
Agana.....	1	1	(Z)	20	6	-	1	1	(Z)	(Z)	20	500	-
Agana Heights.....	11	3	(Z)	720	25	-	3	3	(Z)	(Z)	160	21	-
Agat.....	3	7	(Z)	425	200	-	2	1	(Z)	(Z)	30	25	-
Asan.....	11	2	(Z)	1,070	400	100	2	1	(Z)	(Z)	60	30	30
Barrigada.....	3	2	(Z)	230	750	-	10	2	(Z)	(Z)	1,070	100	780
Chalan Pago and Ordot.....	3	3	(Z)	265	565	-	1	1	(Z)	(Z)	5	40	-
Dededo.....	7	5	(Z)	425	1,035	-	36	8	4	(Z)	5,130	588	1,868
Inarajan.....	2	4	1	3,300	11,700	-	8	3	2	4	2,347	14,300	1,530
Mangilao.....	7	3	(Z)	940	100	-	11	2	(Z)	(Z)	690	55	150
Merizo.....	2	-	(Z)	150	-	-	2	3	(Z)	1	450	1,670	300
Mongmong, Toto, and Maite.....	2	-	(Z)	740	-	-	2	-	(Z)	-	220	-	-
Piti.....	1	-	1	2,000	-	-	1	-	(Z)	-	10	-	-
Santa Rita.....	4	6	(Z)	370	-	-	9	1	(Z)	(Z)	690	25	410
Sinajana.....	1	-	(Z)	100	-	-	-	-	-	-	-	-	-
Talofofo.....	11	2	(Z)	2,395	400	20	9	5	1	(Z)	4,565	500	4,510
Tamuning.....	1	1	(Z)	20	-	-	1	-	(Z)	-	15	-	-
Umatac.....	-	1	-	-	50	-	2	-	(Z)	-	120	-	-
Yigo.....	11	2	1	1,300	40	-	25	5	4	(Z)	8,250	135	7,250
Yona.....	8	6	(Z)	535	3,250	-	2	2	(Z)	(Z)	30	215	-
	Tomatoes						Head cabbage ¹ , 1975						
	Farms		Hectares		Pounds			Farms,		Hectares,		Pounds	
					Harvested		Sold, 1975					Harvested, 1975	Sold, 1975
	1975	1970	1975	1970	1975	1970		1975	1975	1975	1975		
Guam, total.....	283	94	28	21	92,906	82,559	68,150	54	7	12,545	7,885		
Agana.....	1	1	(Z)	(Z)	15	10	-	1	(Z)	20	-		
Agana Heights.....	13	10	(Z)	(Z)	252	279	-	-	-	-	-		
Agat.....	10	10	(Z)	(Z)	453	541	-	-	-	-	-		
Asan.....	14	1	(Z)	(Z)	767	10	400	3	(Z)	170	80		
Barrigada.....	31	5	1	(Z)	6,650	140	4,400	6	(Z)	1,101	700		
Chalan Pago and Ordot.....	1	4	(Z)	(Z)	60	1,610	-	1	(Z)	40	-		
Dededo.....	61	26	13	1	35,435	2,564	27,020	20	3	6,624	4,030		
Inarajan.....	6	6	(Z)	7	1,107	35,230	450	3	1	1,310	700		
Mangilao.....	29	1	4	(Z)	18,364	20	13,880	6	2	2,720	2,350		
Merizo.....	9	5	(Z)	5	6,220	27,475	4,600	-	-	-	-		
Mongmong, Toto, and Maite.....	2	1	(Z)	(Z)	225	2	-	1	(Z)	25	-		
Piti.....	1	-	(Z)	-	5	-	-	-	-	-	-		
Santa Rita.....	35	1	(Z)	(Z)	1,553	28	100	1	(Z)	40	-		
Sinajana.....	-	1	-	(Z)	-	15	-	-	-	-	-		
Talofofo.....	13	6	2	4	12,190	7,330	11,385	4	(Z)	130	25		
Tamuning.....	2	1	(Z)	(Z)	140	5	-	-	-	-	-		
Umatac.....	2	1	(Z)	(Z)	65	200	-	-	-	-	-		
Yigo.....	46	9	8	1	9,215	2,380	5,890	4	1	175	-		
Yona.....	7	5	(Z)	3	190	4,720	25	4	(Z)	190	-		

¹Not included in prior censuses.

Table 15. Vegetables and Field Crops, by Election Districts: 1975 and 1970—Continued

	Chinese cabbage							Green beans						
	Farms		Hectares		Pounds			Farms		Hectares		Pounds		
					Harvested		Sold, 1975					Harvested		Sold, 1975
	1975	1970	1975	1970	1975	1970		1975	1970	1975	1970			
Guam, total.....	181	77	29	10	183,806	45,026	165,950	284	169	26	38	72,618	171,805	50,876
Agana.....	1	-	(Z)	-	10	-	-	1	-	(Z)	-	15	-	-
Agana Heights.....	7	8	(Z)	(Z)	350	216	-	14	12	(Z)	(Z)	1,076	379	-
Agat.....	2	4	(Z)	(Z)	100	250	-	13	25	(Z)	1	685	1,465	-
Asan.....	10	1	(Z)	(Z)	1,075	20	600	12	4	(Z)	2	550	2,116	150
Barrigada.....	17	4	(Z)	(Z)	2,210	235	1,155	18	20	1	1	5,825	1,455	5,265
Chalan Pago and Ordot.....	1	5	(Z)	(Z)	40	480	-	2	4	(Z)	1	16	1,750	-
Dededo.....	43	20	6	1	16,105	1,777	11,435	49	39	6	3	9,167	8,800	5,680
Inarajan.....	9	6	2	6	2,990	29,725	1,375	8	8	2	8	7,850	64,095	5,900
Mangilao.....	19	3	7	(Z)	13,575	95	10,900	27	8	1	1	3,380	565	1,000
Merizo.....	4	3	(Z)	1	250	4,650	-	14	6	(Z)	9	2,580	71,400	1,225
Mongmong, Toto, and Maite.....	3	1	(Z)	(Z)	1,440	3	300	4	1	(Z)	(Z)	830	5	-
Piti.....	2	-	(Z)	(Z)	500	-	-	3	-	(Z)	-	390	-	-
Santa Rita.....	11	2	(Z)	(Z)	320	30	-	28	1	(Z)	(Z)	1,688	100	-
Sinajana.....	1	-	(Z)	-	150	-	-	1	1	(Z)	(Z)	100	40	-
Talofofo.....	12	8	11	2	135,580	6,390	134,050	21	18	4	5	17,645	8,585	15,820
Tamuning.....	-	-	-	-	-	-	-	3	-	(Z)	-	60	-	-
Umatac.....	4	-	(Z)	-	1,042	-	-	10	1	(Z)	(Z)	2,121	30	1,500
Yigo.....	30	10	3	(Z)	7,759	555	6,135	41	15	12	3	17,904	4,670	14,186
Yona.....	5	2	(Z)	(Z)	310	600	-	15	6	(Z)	4	736	6,350	150
	Green onions							Corn ¹						
	Farms		Hectares		Pounds			Farms		Hectares		Pounds		
Harvested					Sold, 1975	Harvested						Sold, 1975		
	1975	1970	1975	1970		1975	1970	1975	1970	1975	1970		1975	1970
Guam, total.....	252	85	11	9	31,082	24,536	17,435	100	51	14	15	39,696	29,315	20,530
Agana.....	1	1	(Z)	(Z)	20	10	-	1	-	(Z)	-	100	-	-
Agana Heights.....	10	5	(Z)	(Z)	151	56	-	2	3	(Z)	(Z)	25	225	-
Agat.....	5	6	(Z)	(Z)	118	137	-	3	7	(Z)	-	715	1,910	-
Asan.....	12	-	(Z)	-	216	-	25	3	1	(Z)	(Z)	250	500	60
Barrigada.....	23	8	(Z)	(Z)	1,293	252	395	10	6	1	3	1,428	1,550	200
Chalan Pago and Ordot.....	1	1	(Z)	(Z)	10	50	-	2	2	1	1	580	700	-
Dededo.....	49	17	3	(Z)	4,596	730	590	27	14	6	1	11,505	2,425	4,710
Inarajan.....	7	6	1	5	1,575	14,170	500	8	5	1	4	2,950	8,200	700
Mangilao.....	28	5	1	(Z)	1,862	362	450	12	2	3	1	17,945	30	14,700
Merizo.....	3	1	(Z)	1	810	5,000	550	3	4	(Z)	1	360	6,750	-
Mongmong, Toto, and Maite.....	2	2	(Z)	(Z)	55	52	-	-	-	-	-	-	-	-
Piti.....	2	-	(Z)	-	55	-	-	1	-	(Z)	-	100	-	-
Santa Rita.....	24	1	(Z)	(Z)	1,383	50	500	3	-	(Z)	-	85	-	-
Sinajana.....	1	2	(Z)	(Z)	50	450	-	-	-	-	-	-	-	-
Talofofo.....	17	12	1	1	8,233	1,140	6,360	7	2	1	1	1,740	1,300	150
Tamuning.....	1	1	(Z)	(Z)	15	13	-	-	-	-	-	-	-	-
Umatac.....	5	-	(Z)	-	103	-	-	2	2	(Z)	(Z)	103	425	-
Yigo.....	46	15	5	1	10,279	1,054	8,065	11	3	1	2	1,525	5,300	10
Yona.....	15	2	(Z)	1	258	1,010	-	5	-	(Z)	-	285	-	-

¹Includes dry and green corn.

Table 15. Vegetables and Field Crops, by Election Districts: 1975 and 1970—Continued

	Cucumbers							Eggplant						
	Farms		Hectares		Pounds			Farms		Hectares		Pounds		
					Harvested		Sold, 1975					Harvested		Sold, 1975
	1975	1970	1975	1970	1975	1970		1975	1970	1975	1970	1975		
Guam, total.....	180	83	25	42	212,959	245,182	173,684	363	232	37	27	143,605	110,979	103,915
Agana.....	1	-	(Z)	-	20	-	-	1	3	(Z)	(Z)	10	520	-
Agana Heights.....	1	3	(Z)	(Z)	30	180	-	19	14	(Z)	(Z)	1,110	915	-
Agat.....	8	3	(Z)	(Z)	1,040	300	-	20	27	(Z)	1	3,137	1,952	-
Asan.....	3	-	(Z)	-	800	-	450	28	4	(Z)	(Z)	1,350	158	325
Barrigada.....	18	5	2	(Z)	9,115	970	6,050	38	22	1	1	49,485	2,235	45,375
Chalan Pago and Ordot.....	-	5	-	3	-	4,770	-	5	12	1	3	612	5,365	-
Dededo.....	48	20	9	1	110,822	2,342	95,519	79	53	9	2	15,553	4,958	7,225
Inarajan.....	10	6	2	17	11,960	134,050	10,700	17	11	3	7	9,785	39,735	7,965
Mangilao.....	8	3	(Z)	1	1,900	590	1,025	43	8	6	1	10,138	1,140	6,050
Merizo.....	9	8	(Z)	7	2,040	61,350	1,270	5	6	(Z)	4	4,560	37,800	3,050
Mongmong, Toto, and Maite.....	2	-	(Z)	-	900	-	-	4	3	1	(Z)	1,380	105	-
Piti.....	3	-	(Z)	-	165	-	-	3	-	(Z)	-	120	-	-
Santa Rita.....	12	1	1	(Z)	830	15	-	47	13	1	(Z)	4,536	268	2,150
Sinajana.....	-	-	-	-	-	-	-	1	3	(Z)	(Z)	90	115	-
Talofofo.....	19	12	6	6	54,995	26,300	46,320	23	18	4	3	18,545	6,875	16,290
Tamuning.....	2	1	(Z)	(Z)	55	40	-	7	2	(Z)	(Z)	205	45	-
Umatac.....	4	-	(Z)	-	2,210	-	1,800	9	1	(Z)	(Z)	375	300	-
Yigo.....	26	11	5	2	15,777	7,075	10,500	74	23	10	2	21,279	4,176	15,205
Yona.....	6	5	(Z)	5	300	7,200	50	14	9	1	3	1,335	4,317	280
	Peppers							Pumpkins and squash						
	Farms		Hectares		Pounds			Farms		Hectares		Pounds		
					Harvested		Sold, 1975					Harvested		Sold, 1975
	1975	1970	1975	1970	1975	1970		1975	1970	1975	1970	1975		
	1975	1970	1975	1970	1975	1970	1975	1970	1975	1970	1975	1970	1975	
Guam, total.....	405	168	17	15	36,029	42,345	9,415	292	111	21	9	82,044	20,904	21,170
Agana.....	1	1	(Z)	(Z)	5	3	-	1	3	(Z)	(Z)	5	380	-
Agana Heights.....	24	10	(Z)	(Z)	448	186	-	17	12	(Z)	1	1,056	1,073	-
Agat.....	25	24	(Z)	1	1,453	992	-	12	12	(Z)	1	1,724	1,470	-
Asan.....	35	5	1	(Z)	1,268	256	105	19	-	(Z)	-	1,560	-	-
Barrigada.....	35	10	(Z)	1	1,210	487	200	28	12	1	2	5,117	2,460	330
Chalan Pago and Ordot.....	6	3	1	(Z)	65	77	-	1	1	(Z)	(Z)	10	200	-
Dededo.....	66	42	6	2	14,884	4,345	2,050	58	30	7	1	25,780	5,070	14,360
Inarajan.....	10	8	1	4	1,423	17,515	100	7	4	1	1	6,360	4,175	1,550
Mangilao.....	37	7	1	(Z)	1,793	288	150	29	4	2	(Z)	8,940	170	2,600
Merizo.....	5	2	(Z)	2	270	8,050	-	3	-	(Z)	-	360	-	-
Mongmong, Toto, and Maite.....	3	5	(Z)	(Z)	170	79	-	2	3	(Z)	(Z)	150	120	-
Piti.....	6	-	(Z)	-	115	-	-	7	-	(Z)	-	3,050	-	-
Santa Rita.....	29	12	(Z)	(Z)	925	116	-	21	6	1	(Z)	4,480	242	-
Sinajana.....	1	3	(Z)	(Z)	10	75	-	-	1	-	(Z)	-	50	-
Talofofo.....	19	6	1	2	5,756	5,399	5,170	12	3	1	(Z)	2,890	410	2,300
Tamuning.....	4	3	(Z)	(Z)	67	75	-	6	2	(Z)	(Z)	735	50	30
Umatac.....	8	1	(Z)	(Z)	320	30	-	2	-	(Z)	-	300	-	-
Yigo.....	78	18	6	1	5,480	1,708	1,640	58	12	8	2	18,562	2,974	6,100
Yona.....	13	8	(Z)	2	367	2,664	-	9	6	(Z)	1	965	2,060	-

Table 15. Vegetables and Field Crops, by Election Districts: 1975 and 1970—Continued

	Watermelons, 1975				Cantaloupe, 1975				Muskmelons and pepinos, 1975					
	Farms	Hectares	Pounds		Farms	Hectares	Pounds		Farms	Hectares	Pounds			
			Harvested	Sold			Harvested	Sold			Harvested	Sold		
Guam, total.....	70	20	115,066	91,750	34	4	21,103	18,095	39	2	19,475	13,700		
Agana.....	-	-	-	-	-	-	-	-	-	-	-	-		
Agana Heights.....	2	-	200	-	-	-	-	-	-	-	-	-		
Agat.....	3	(Z)	890	-	1	(Z)	100	-	2	(Z)	250	-		
Asan.....	3	(Z)	3,205	1,500	1	(Z)	75	-	4	(Z)	120	-		
Barrigada.....	7	1	980	-	3	(Z)	508	-	7	1	13,200	10,400		
Chalan Pago and Ordot.....	-	-	-	-	-	-	-	-	-	-	-	-		
Dededo.....	9	2	5,750	5,000	7	1	3,600	3,325	13	1	2,400	1,400		
Inarajan.....	6	2	58,100	52,800	1	(Z)	500	500	1	(Z)	500	500		
Mangilao.....	7	1	1,605	-	2	1	300	-	3	(Z)	430	-		
Merizo.....	5	(Z)	1,640	650	6	(Z)	2,340	1,520	2	(Z)	500	400		
Mongmong, Toto, and Maite.....	1	(Z)	500	-	-	-	-	-	1	(Z)	700	-		
Piti.....	2	(Z)	100	-	2	(Z)	40	-	-	-	-	-		
Santa Rita.....	4	1	2,516	-	2	(Z)	400	-	1	(Z)	50	-		
Sinajana.....	-	-	-	-	-	-	-	-	-	-	-	-		
Talofofo.....	9	4	32,680	27,800	6	1	12,900	12,700	2	(Z)	1,100	1,000		
Tamuning.....	-	-	-	-	-	-	-	-	1	(Z)	25	-		
Umatac.....	4	(Z)	2,370	-	-	-	-	-	-	-	-	-		
Yigo.....	7	9	4,330	4,000	3	1	340	50	1	(Z)	50	-		
Yona.....	1	(Z)	200	-	-	-	-	-	1	(Z)	150	-		
	Watermelons, cantaloupes, muskmelons, and pepinos, 1970				Bittermelons, 1975				Other crops					
	Farms	Hectares	Pounds harvested	Farms	Hectares	Pounds		Farms		Hectares		Pounds		Sold, 1975
						Harvested	Sold	1975	1970	1975	1970	1975	1970	
Guam, total.....	50	35	319,204	142	4	30,801	25,561	218	12	15	(Z)	31,119	1,082	9,727
Agana.....	-	-	-	1	(Z)	5	-	-	-	-	-	-	-	-
Agana Heights.....	1	(Z)	100	8	(Z)	145	-	6	-	(Z)	-	280	-	-
Agat.....	4	(Z)	740	5	(Z)	231	-	16	3	1	(Z)	554	155	-
Asan.....	-	-	-	12	(Z)	587	70	10	1	(Z)	(Z)	1,127	50	-
Barrigada.....	3	(Z)	320	11	(Z)	438	1	53	1	3	(Z)	1,978	-	265
Chalan Pago and Ordot.....	1	1	6,000	-	-	-	-	-	-	-	-	-	-	-
Dededo.....	8	1	3,260	25	2	424	25	44	1	7	(Z)	3,858	200	1,230
Inarajan.....	6	17	229,500	1	(Z)	800	-	-	-	-	-	-	-	-
Mangilao.....	-	-	-	9	(Z)	615	150	30	-	1	-	11,599	-	157
Merizo.....	7	6	44,450	3	(Z)	2,170	2,080	10	-	(Z)	-	1,140	-	300
Mongmong, Toto, and Maite.....	-	-	-	-	-	-	-	1	2	(Z)	(Z)	45	52	-
Piti.....	-	-	-	2	(Z)	60	-	2	-	(Z)	(Z)	125	-	-
Santa Rita.....	1	(Z)	29	5	(Z)	313	-	6	-	(Z)	-	603	-	-
Sinajana.....	-	-	-	1	(Z)	15	-	-	-	-	-	-	-	-
Talofofo.....	12	5	13,735	16	1	22,175	21,585	8	1	(Z)	(Z)	2,175	400	1,975
Tamuning.....	1	(Z)	20	-	-	-	-	-	-	-	-	-	-	-
Umatac.....	-	-	-	1	(Z)	1,500	1,500	4	-	(Z)	-	910	-	800
Yigo.....	4	2	5,950	37	1	1,181	150	22	3	3	(Z)	6,515	225	5,000
Yona.....	2	3	15,100	5	(Z)	142	-	6	-	(Z)	-	210	-	-

Table 16. Fruits and Nuts, by Election Districts: 1975 and 1970

	Avocados							Bananas, including cooking and eating							
	Farms		Trees		Pounds			Sold, 1975	Farms		Hills		Pounds		
					Harvested		Sold, 1975						Harvested		Sold, 1975
	1975	1970	1975	1970	1975	1970		1975	1970	1975	1970	1975			
Guam, total.....	675	535	8,055	3,244	139,834	32,291	25,568	1,051	751	94,317	62,193	468,613	192,721	89,143	
Agana.....	2	13	5	32	50	675	-	3	23	9	683	350	6,005	-	
Agana Heights.....	43	31	325	83	6,350	2,267	120	47	38	1,189	1,087	3,863	4,445	-	
Agat.....	17	51	1,138	143	4,200	1,223	-	33	79	2,834	3,811	34,385	16,195	2,500	
Asan.....	28	16	283	68	5,960	1,410	129	56	13	3,216	469	12,686	2,977	575	
Barrigada.....	76	52	435	249	7,311	3,058	119	87	69	4,992	3,014	18,815	20,608	1,030	
Chalan Pago and Ordot.....	21	13	84	90	765	945	-	23	24	642	2,062	3,010	4,470	-	
Dededo.....	35	91	564	623	9,556	5,175	1,050	99	116	5,397	4,993	20,389	18,466	2,410	
Inarajan.....	36	16	689	70	8,155	1,100	1,730	81	41	14,411	6,433	62,515	18,220	39,831	
Mangilao.....	96	28	784	122	33,106	725	14,950	104	45	5,788	2,183	29,807	5,695	4,900	
Merizo.....	54	4	124	109	2,003	150	400	96	7	8,226	865	35,610	3,860	16,440	
Mongmong, Toto, and Maite.....	7	17	31	164	1,650	1,345	-	10	36	4,816	1,312	80,760	5,615	-	
Piti.....	13	2	821	9	2,955	160	-	19	1	937	25	6,640	1,000	-	
Santa Rita.....	48	69	169	204	5,846	833	-	99	67	4,477	1,128	38,805	1,425	-	
Sinajana.....	4	5	423	23	210	520	-	4	11	276	960	650	8,360	-	
Talofofo.....	49	25	429	161	8,275	1,835	2,250	64	45	16,851	15,556	50,795	30,460	17,850	
Tamuning.....	3	12	5	44	240	160	-	11	16	797	327	1,405	715	35	
Umatac.....	17	1	64	2	3,405	-	-	40	6	2,318	1,334	23,170	1,710	1,960	
Yigo.....	94	54	1,519	658	28,667	5,735	4,680	122	56	13,557	3,854	29,070	6,410	300	
Yona.....	32	35	163	390	11,130	4,975	140	53	58	3,584	12,097	15,888	36,085	1,312	
	Grapefruit							Oranges							
	Farms		Trees		Pounds			Sold, 1975	Farms		Trees		Pounds		
					Harvested		Sold, 1975						Harvested		Sold, 1975
	1975	1970	1975	1970	1975	1970		1975	1970	1975	1970	1975	1970	1975	
Guam, total.....	116	69	364	143	9,958	3,907	125	279	248	1,090	1,176	26,027	9,716	9,225	
Agana.....	-	3	-	4	-	227	-	-	3	-	7	-	15	-	
Agana Heights.....	5	3	6	4	541	160	-	9	8	58	33	455	1,070	-	
Agat.....	4	9	72	20	1,180	190	-	1	15	7	42	50	165	-	
Asan.....	4	1	4	1	52	-	-	10	3	40	41	355	500	-	
Barrigada.....	11	10	54	24	1,315	930	-	30	33	197	143	3,735	1,512	1,300	
Chalan Pago and Ordot.....	2	3	3	5	20	10	-	15	14	42	52	190	567	-	
Dededo.....	3	8	-	15	-	325	-	9	40	31	222	645	447	-	
Inarajan.....	19	1	41	1	1,180	50	25	27	14	108	85	7,405	1,295	6,900	
Mangilao.....	16	4	79	9	625	-	-	33	22	125	81	1,992	450	600	
Merizo.....	14	-	18	-	735	-	-	45	4	101	38	1,570	-	200	
Mongmong, Toto, and Maite.....	3	1	9	2	810	500	-	3	8	16	21	820	113	-	
Piti.....	2	-	2	-	10	-	-	1	-	2	-	25	-	-	
Santa Rita.....	2	5	2	7	100	45	-	3	19	4	50	55	157	-	
Sinajana.....	-	1	-	1	-	-	-	4	4	10	7	45	50	-	
Talofofo.....	16	4	43	13	2,030	60	-	22	17	81	87	3,530	1,060	125	
Tamuning.....	-	2	-	3	-	-	-	1	2	2	16	10	-	-	
Umatac.....	2	-	11	-	150	-	-	8	1	24	4	685	30	-	
Yigo.....	10	7	14	12	985	1,350	100	38	17	176	54	1,445	215	100	
Yona.....	3	7	6	22	225	60	-	20	24	66	193	3,015	2,070	-	

Table 16. Fruits and Nuts, by Election Districts: 1975 and 1970—Continued

	Tangerines							Lemons and limes						
	Farms		Trees		Pounds			Farms		Trees		Pounds		
					Harvested		Sold, 1975					Harvested		Sold, 1975
	1975	1970	1975	1970	1975	1970		1975	1970	1975	1970	1975	1970	
Guam. total.....	322	352	3,919	3,387	54,748	32,801	17,780	698	574	4,250	4,084	73,487	58,229	7,570
Agana.....	1	6	1	21	10	223	-	1	16	3	50	20	580	-
Agana Heights.....	11	15	44	42	1,370	240	-	48	27	189	114	3,209	5,180	-
Agat.....	9	15	21	32	458	185	-	26	50	100	143	3,049	2,595	-
Asan.....	10	7	108	22	710	712	200	36	9	134	29	1,770	975	-
Barrigada.....	50	42	632	263	4,605	2,960	2,000	74	61	629	315	10,022	4,215	1,025
Chalan Pago and Ordot.....	17	14	117	91	400	1,420	-	20	19	92	114	582	1,375	-
Dededo.....	13	65	114	742	2,035	1,805	-	45	103	288	640	9,303	4,883	1,075
Inarajan.....	27	20	115	130	3,885	3,597	875	46	24	671	131	4,255	6,420	150
Mangilao.....	59	23	1,353	129	14,905	454	9,400	96	37	495	228	12,146	1,900	770
Merizo.....	30	4	75	15	368	-	-	67	4	193	13	4,530	20	700
Mongmong, Toto, and Maite.....	5	14	43	57	1,520	800	-	5	24	50	112	2,000	3,450	-
Piti.....	4	-	56	-	150	-	-	12	2	58	13	784	700	-
Santa Rita.....	8	19	15	35	235	71	-	35	56	102	144	1,647	695	-
Sinajana.....	4	5	210	31	215	730	-	4	5	208	24	135	200	-
Tolofofo.....	42	20	265	216	10,983	3,140	5,100	41	31	221	317	5,020	5,650	2,250
Tamuning.....	-	7	-	20	-	270	-	3	13	10	52	215	514	-
Umatac.....	5	-	18	-	250	-	-	17	3	57	21	790	270	-
Yigo.....	-	32	532	331	8,208	4,654	205	86	50	536	1,204	9,960	9,272	1,300
Yona.....	27	44	200	1,210	4,441	11,540	-	36	40	214	420	4,050	9,335	300
	Mangos							Papayas						
	Farms		Trees		Pounds			Farms		Trees		Pounds		
					Harvested		Sold, 1975					Harvested		Sold, 1975
	1975	1970	1975	1970	1975	1970		1975	1970	1975	1970	1975	1970	
	Guam. total.....	524	484	2,747	1,740	77,744	49,407	6,548	567	378	18,011	3,292	101,346	22,089
Agana.....	2	21	5	45	50	1,260	-	1	12	5	43	20	200	-
Agana Heights.....	10	30	59	126	648	3,010	-	37	32	345	174	3,636	1,883	500
Agat.....	18	55	96	126	14,531	4,070	-	17	47	117	270	1,545	1,854	-
Asan.....	27	9	145	52	5,015	2,758	100	25	8	52	77	410	1,325	-
Barrigada.....	73	47	688	139	7,507	5,560	2,100	55	30	615	191	21,495	2,150	16,150
Chalan Pago and Ordot.....	20	13	174	97	490	4,223	-	13	11	102	53	190	495	-
Dededo.....	3	61	11	117	75	510	-	67	64	5,456	555	19,280	3,015	11,590
Inarajan.....	32	20	148	107	7,260	3,735	1,048	30	14	574	156	3,980	865	600
Mangilao.....	81	31	278	106	6,507	2,122	1,700	75	24	7,168	238	21,723	1,590	8,534
Merizo.....	72	5	211	12	6,805	150	600	32	1	168	1	930	-	-
Mongmong, Toto, and Maite.....	5	19	23	67	195	930	-	3	17	16	90	260	651	-
Piti.....	13	2	236	8	4,190	50	-	7	-	35	-	280	-	-
Santa Rita.....	38	62	145	162	6,420	1,259	-	52	26	221	112	4,222	381	-
Sinajana.....	4	7	17	18	395	4,150	-	-	7	-	31	-	830	-
Talofofo.....	34	21	155	177	4,760	3,800	1,000	29	20	491	333	8,105	1,736	3,700
Tamuning.....	1	6	2	25	30	175	-	5	10	17	52	130	289	-
Umatac.....	20	2	76	6	4,160	100	-	10	1	335	6	530	80	-
Yigo.....	52	38	229	167	8,516	2,155	-	84	34	1,979	554	11,005	2,310	700
Yona.....	19	35	55	183	190	9,390	-	25	20	315	356	3,605	2,435	-

Table 16. Fruits and Nuts, by Election Districts: 1975 and 1970—Continued

	Pineapples							Breadfruit						
	Farms		Plants		Pounds			Farms		Trees		Pounds		
					Harvested		Sold, 1975					Harvested		Sold, 1975
	1975	1970	1975	1970	1975	1970		1975	1970	1975	1970			
Guam, total.....	101	117	4,028	5,544	6,539	6,229	100	322	212	2,144	1,983	78,589	33,751	3,830
Agana.....	1	-	100	-	200	-	-	1	6	1	12	30	300	-
Agana Heights.....	4	5	29	82	80	100	-	7	9	25	23	625	560	-
Agat.....	4	22	628	1,766	1,445	1,424	-	16	24	88	63	7,315	1,160	-
Asan.....	6	2	264	15	250	10	-	20	4	190	8	6,095	350	-
Barrigada.....	11	7	176	213	56	200	-	25	17	148	36	4,517	860	615
Chalan Pago and Ordot.....	3	5	60	453	20	2,080	-	7	6	35	19	210	2,120	-
Dededo.....	4	24	122	480	108	480	-	14	15	44	22	2,117	190	815
Inarajan.....	4	3	36	225	719	85	-	41	20	407	294	14,965	14,515	300
Mangilao.....	17	8	376	183	290	175	-	26	8	173	22	5,680	310	-
Merizo.....	1	-	30	-	-	-	-	53	5	163	21	9,296	800	-
Mongmong, Toto, and Maite.....	1	2	13	103	-	100	-	2	6	2	17	20	400	-
Piti.....	1	-	100	-	400	-	-	5	-	107	-	1,605	-	-
Santa Rita.....	10	10	625	174	1,300	-	-	12	14	21	44	3,235	180	-
Sinajana.....	1	1	50	50	30	200	-	2	2	21	55	310	400	-
Talofofo.....	8	2	193	11	190	20	-	24	17	209	258	10,485	3,200	2,000
Tamuning.....	-	2	-	100	-	300	-	3	4	15	16	329	85	-
Umatac.....	4	-	80	-	125	-	-	13	2	74	17	2,555	200	-
Yigo.....	18	15	1,060	1,481	1,296	680	100	39	25	332	313	5,440	4,991	100
Yona.....	3	9	86	208	30	375	-	12	28	39	743	3,760	3,130	-
	Coconuts							Betelnuts						
	Farms		Trees		Pounds			Farms		Trees		Pounds		
Harvested					Sold, 1975	Harvested						Sold, 1975		
	1975	1970	1975	1970		1975	1970	1975	1970	1975	1970		1975	1970
Guam, total.....	940	683	50,046	46,461	441,197	255,844	43,800	345	251	14,488	6,757	18,154	15,874	3,010
Agana.....	3	25	505	360	425	6,870	-	2	9	17	38	60	131	-
Agana Heights.....	57	36	1,243	1,868	26,115	5,513	-	8	14	672	42	686	425	-
Agat.....	44	68	1,224	880	9,707	2,735	-	19	30	153	164	2,219	425	-
Asan.....	66	9	3,730	83	29,745	210	-	10	5	138	9	365	60	-
Barrigada.....	91	64	4,213	2,275	25,183	23,335	100	30	22	5,637	210	1,613	3,699	1,000
Chalan Pago and Ordot.....	22	15	965	1,005	2,030	8,835	-	13	5	835	119	400	550	-
Dededo.....	86	124	4,846	8,058	64,392	19,975	9,950	16	24	321	132	1,400	95	-
Inarajan.....	56	34	5,071	6,798	54,892	22,395	200	31	8	573	1,430	1,504	2,291	650
Mangilao.....	106	44	9,020	2,441	45,825	4,168	18,800	41	20	567	442	584	347	-
Merizo.....	84	3	1,444	64	14,435	-	10,700	50	2	888	5	791	-	-
Mongmong, Toto, and Maite.....	5	29	331	582	15,085	3,375	-	2	5	31	51	57	125	-
Piti.....	14	2	655	51	8,330	200	-	8	-	130	-	232	-	-
Santa Rita.....	63	66	780	508	23,095	2,683	-	22	45	130	202	1,210	233	-
Sinajana.....	4	5	354	329	570	21,000	-	3	3	24	4	45	70	-
Talofofo.....	56	35	2,537	3,180	24,322	11,380	3,800	28	12	1,993	174	3,085	328	1,350
Tamuning.....	1	13	2	620	40	3,910	-	-	5	-	44	-	95	-
Umatac.....	25	2	554	287	11,160	500	-	12	1	115	1	608	5	10
Yigo.....	117	65	10,509	8,034	69,950	44,485	250	42	24	1,076	914	2,845	1,480	-
Yona.....	40	44	2,063	9,038	15,896	74,275	-	8	17	188	2,776	450	5,515	-

Table 16. Fruits and Nuts, by Election Districts: 1975 and 1970—Continued

	Starfruit							Guavas							
	Farms		Trees		Pounds			Sold, 1975	Farms		Trees		Pounds		
					Harvested		1975						1970	1975	1970
	1975	1970	1975	1970	1975	1970		1975	1970	1975					
Guam, total.....	357	218	787	1,575	21,878	7,040	920	476	320	5,883	2,284	19,031	6,636	900	
Agana.....	-	6	-	7	-	174	-	-	7	-	10	-	32	-	
Agana Heights.....	19	10	42	18	1,153	270	-	25	14	106	68	670	203	-	
Agat.....	17	31	41	62	1,327	602	-	14	48	31	119	570	329	-	
Asan.....	25	5	45	8	1,550	57	-	33	3	676	9	811	25	-	
Barrigada.....	49	24	136	61	3,368	680	500	48	29	328	109	3,193	599	-	
Chalan Pago and Ordot.....	10	6	28	16	105	65	-	18	7	79	42	242	430	-	
Dededo.....	13	26	18	62	795	470	-	54	63	1,398	359	2,563	585	300	
Inarajan.....	26	10	65	1,069	2,349	2,505	100	26	6	115	167	563	721	-	
Mangilao.....	62	12	124	24	2,978	115	-	66	22	737	279	3,273	358	-	
Merizo.....	29	3	43	4	1,310	-	-	29	3	137	7	517	-	-	
Mongmong, Toto, and Maite.....	1	10	2	16	2	270	-	3	16	23	76	45	322	-	
Piti.....	10	-	24	-	510	-	-	7	-	52	-	93	-	-	
Santa Rita.....	18	31	24	49	655	56	-	39	27	106	59	1,046	101	-	
Sinajana.....	3	-	11	-	65	-	-	2	2	15	62	20	500	-	
Talofofo.....	26	11	46	20	1,345	105	100	29	15	187	113	1,720	331	600	
Tamuning.....	2	6	4	12	24	90	-	2	7	13	18	30	50	-	
Umatac.....	5	1	10	2	490	5	-	3	1	8	6	120	5	-	
Yigo.....	30	14	97	59	2,442	288	220	60	30	1,784	306	3,212	1,230	-	
Yona.....	12	12	27	86	1,410	1,288	-	18	20	88	475	343	815	-	

	Soursops					Sweetsops ¹ , 1975				Other fruits								
	Farms		Trees		Pounds			Farms	Trees	Pounds		Farms	Trees or plants		Pounds			
					Harvested		Sold, 1975			Harvested	Sold		1975	1970	1975	1970	Harvested	
	1975	1970	1975	1970	1975	1970		1975	1970			1975					1970	1975
Guam, total.....	215	131	1,712	2,675	11,626	13,645	-	199	858	7,423	200	323	132	1,815	1,353	21,838	3,223	2,418
Agana.....	1	5	1	6	10	65	-	1	3	15	-	-	2	-	2	-	-	-
Agana Heights.....	13	6	24	62	329	290	-	19	35	302	-	36	3	67	65	963	145	-
Agat.....	9	16	59	29	955	275	-	9	22	427	-	9	23	16	59	875	15	-
Asan.....	10	1	186	2	595	-	-	14	24	161	-	15	1	108	5	635	150	-
Barrigada.....	27	9	92	22	790	75	-	23	133	840	-	24	14	206	67	4,898	228	1,000
Chalan Pago and Ordot.....	8	2	29	5	80	75	-	7	20	25	-	-	2	-	27	-	120	-
Dededo.....	18	23	149	58	1,223	215	-	8	46	319	-	14	33	49	235	1,418	635	558
Inarajan.....	28	6	218	731	1,439	4,230	-	23	89	590	-	19	3	55	8	762	550	-
Mangilao.....	28	7	692	113	2,805	30	-	35	157	1,005	-	62	5	488	48	3,198	100	520
Merizo.....	13	-	24	-	190	-	-	11	25	112	-	26	-	40	-	802	-	50
Mongmong, Toto, and Maite.....	-	7	-	56	-	720	-	1	2	3	-	1	7	1	13	2	135	-
Piti.....	4	-	18	-	195	-	-	6	19	130	-	2	-	12	-	15	-	-
Santa Rita.....	10	8	17	15	1,485	40	-	2	17	1,485	-	43	8	336	62	3,742	125	150
Sinajana.....	2	2	4	3	30	100	-	2	11	60	-	-	1	-	7	-	100	-
Talofofo.....	13	11	55	87	520	790	-	20	157	1,140	200	38	8	284	65	2,713	135	100
Tamuning.....	-	2	-	12	-	-	-	-	-	-	-	1	3	1	23	10	80	-
Umatac.....	1	1	4	12	50	50	-	-	-	-	-	1	-	1	-	30	-	-
Yigo.....	23	14	126	108	835	1,310	-	11	56	394	-	22	10	95	18	985	235	40
Yona.....	7	11	14	1,354	95	5,380	-	7	42	415	-	10	9	56	649	790	470	-

¹Not included in prior censuses.

Table 17. Livestock and Poultry, by Election Districts: 1975 and 1970

	Carabaos					Cattle and calves					Milk cows					Other cattle and calves				
	Farms		Number		Sold, 1975	Farms		Number		Sold, 1975	Farms		Number		Sold, 1975	Farms		Number		Sold, 1975
	1975	1970	1975	1970		1975	1970	1975	1970		1975	1970	1975	1970		1975	1970	1975	1970	
	1975	1970	1975	1970	1975	1970	1975	1970	1975	1970	1975	1970	1975	1970	1975	1970	1975	1970	1975	
Guam, total.....	93	45	223	149	2	333	284	2,647	2,650	161	85	54	268	126	10	302	271	2,379	2,524	151
Agana.....	-	-	-	-	-	-	4	-	6	-	-	-	-	-	-	-	4	-	6	-
Agana Heights.....	-	1	-	2	-	5	11	5	126	-	1	1	1	1	-	3	11	4	125	-
Agat.....	-	6	4	9	-	4	6	9	20	-	-	-	-	-	-	4	6	9	20	-
Asan.....	3	-	8	-	-	19	2	116	9	17	10	2	25	4	6	15	1	91	5	11
Barrigada.....	-	1	-	3	-	35	33	287	100	9	9	6	12	11	2	32	29	275	89	7
Chalan Pago and Ordot.....	14	2	11	11	-	13	19	58	64	-	-	-	-	-	-	13	19	58	64	-
Dededo.....	-	-	-	-	-	44	36	162	125	12	9	4	26	5	-	41	36	136	120	12
Inarajan.....	17	9	44	82	1	20	16	160	508	3	2	2	3	10	-	20	16	157	498	3
Mangilao.....	-	-	-	-	-	43	24	394	505	13	16	9	35	43	-	34	21	359	462	13
Merizo.....	22	4	28	4	1	34	6	128	14	11	2	-	2	-	-	33	6	126	14	11
Mongmong, Toto, and Maite.....	2	-	-	-	-	2	8	40	58	10	-	2	-	7	-	4	7	40	51	10
Piti.....	2	1	2	2	-	7	1	52	3	-	6	-	13	-	-	5	1	39	3	-
Santa Rita.....	3	1	2	1	-	5	9	9	22	-	-	1	-	2	-	4	9	9	20	-
Sinajana.....	1	-	2	-	-	2	1	7	1	-	-	1	-	1	-	2	-	7	-	-
Talofofu.....	13	14	97	25	-	19	25	506	224	-	1	5	50	5	-	19	25	456	219	-
Tamuning.....	-	-	-	-	-	-	2	-	75	-	-	-	-	-	-	-	2	-	75	-
Umatac.....	13	3	23	5	-	6	3	15	30	-	3	-	3	-	-	4	3	12	30	-
Yigo.....	2	1	2	1	-	52	25	540	150	34	24	6	96	13	2	46	25	444	137	32
Yona.....	1	2	-	4	-	23	53	159	610	52	2	15	2	24	-	23	50	157	586	52
	Hogs and pigs					Goats and kids					Horses and colts									
	Farms		Number		Sold, 1975	Farms		Number		Sold, 1975	Farms		Number		Sold, 1975	Farms		Number		Sold, 1975
	1975	1970	1975	1970		1975	1970	1975	1970		1975	1970	1975	1970		1975	1970	1975	1970	
Guam, total.....	1,064	598	8,245	4,348	1,678	152	75	968	458	43	31	16	113	73	11					
Agana.....	1	12	1	30	-	-	1	-	10	-	-	1	-	3	-					
Agana Heights.....	57	35	223	211	-	2	2	4	2	-	1	1	3	1	-					
Agat.....	51	44	275	201	20	2	6	3	23	-	2	-	21	-	10					
Asan.....	58	8	465	126	136	4	-	9	-	8	3	-	11	-	-					
Barrigada.....	72	57	492	307	109	9	5	83	12	23	-	-	-	-	-					
Chalan Pago and Ordot.....	38	25	184	156	7	9	3	29	6	-	-	-	-	-	-					
Dededo.....	190	91	1,471	652	415	19	14	69	44	-	2	-	2	-	-					
Inarajan.....	68	34	718	278	193	17	6	53	37	3	6	3	16	21	1					
Mangilao.....	94	39	756	216	98	21	4	161	51	-	3	1	7	5	-					
Merizo.....	83	6	394	14	50	5	-	21	-	-	-	-	-	-	-					
Mongmong, Toto, and Maite.....	9	21	82	123	-	2	2	7	8	-	1	2	2	3	-					
Piti.....	16	2	96	57	-	5	-	172	-	-	1	-	2	-	-					
Santa Rita.....	68	27	318	117	51	4	7	9	13	-	-	1	-	3	-					
Sinajana.....	7	5	22	16	-	1	-	2	-	-	-	-	-	-	-					
Talofofu.....	53	46	459	445	82	15	4	44	18	6	2	1	5	20	-					
Tamuning.....	13	16	47	87	-	2	3	3	13	-	-	-	-	-	-					
Umatac.....	30	4	117	59	-	-	1	-	78	-	3	1	5	3	-					
Yigo.....	107	49	1,674	515	485	32	7	212	81	3	7	5	39	14	-					
Yona.....	49	77	451	738	32	3	10	87	62	-	-	-	-	-	-					

Table 17. Livestock and Poultry, by Election Districts: 1975 and 1970—Continued

	Chicken hens 4 months old and over, 1975			Commercial layers, 1975			Other chicken hens, 1975			Chickens less than 4 months old, 1975			Chickens 4 months old and over, 1970	
	Farms	Number	Sold	Farms	Number	Sold	Farms	Number	Sold	Farms	Number	Sold	Farms	Number
	Guam, total.....	986	151,164	35,607	226	120,453	34,315	910	30,711	1,292	605	53,332	100	888
Agana.....	1	20	-	-	-	-	1	20	-	-	-	-	28	865
Agana Heights.....	50	1,412	-	3	42	-	49	1,370	-	41	820	-	55	2,692
Agat.....	52	36,706	300	25	35,379	300	47	1,327	-	30	10,741	-	77	19,221
Asan.....	65	4,367	50	13	1,235	-	57	3,132	50	45	3,582	-	19	887
Barrigada.....	67	12,482	6,100	18	11,484	6,100	54	998	-	37	965	-	93	18,381
Chalan Pago and Ordot.....	33	1,130	40	-	-	-	33	1,130	40	27	1,481	20	31	2,560
Dededo.....	142	9,641	1,565	21	5,159	1,480	135	4,482	85	108	5,104	-	136	13,546
Inarajan.....	77	51,238	24,550	1	(D)	(D)	76	2,213	-	32	17,331	-	45	25,660
Mangilao.....	99	10,267	1,060	33	7,362	660	89	2,905	400	73	3,819	25	53	5,788
Merizo.....	64	2,974	380	7	(D)	(D)	60	2,121	105	35	828	-	7	386
Mongmong, Toto, and Maite.....	7	3,990	200	2	3,490	100	6	500	100	3	644	-	26	1,417
Piti.....	16	1,337	-	9	570	-	16	767	-	11	342	-	3	2,100
Santa Rita.....	63	1,004	200	11	102	-	53	902	200	44	1,039	-	67	2,426
Sinajan.....	5	70	-	-	-	-	5	70	-	4	102	-	7	324
Talofofo.....	50	3,201	300	9	1,394	200	44	1,807	100	29	1,395	20	55	2,661
Tamuning.....	4	103	-	1	35	-	3	68	-	3	145	-	40	5,875
Umatac.....	26	755	-	9	154	-	26	601	-	5	156	-	5	317
Yigo.....	116	8,556	862	63	4,151	650	107	4,405	212	54	4,190	35	66	13,881
Yona.....	49	1,911	-	1	18	-	49	1,893	-	24	648	-	75	7,649
	Roosters and pullets, 1975			Ducks, 1975			Pigeons, 1975			Other poultry ¹				
	Farms	Number	Sold	Farms	Number	Sold	Farms	Number	Sold	Farms		Number		
										1975	1970	1975	1970	
Guam, total.....	861	14,271	350	274	3,324	684	123	3,219	131	9	130	99	4,864	
Agana.....	1	6	-	1	2	-	-	-	-	1	5	20	150	
Agana Heights.....	50	373	-	9	82	-	5	179	-	-	8	-	95	
Agat.....	50	394	-	18	306	-	6	118	-	1	17	1	203	
Asan.....	60	609	-	15	146	-	5	147	125	-	1	-	15	
Barrigada.....	58	3,557	35	22	451	400	15	218	-	1	16	3	1,803	
Chalan Pago and Ordot.....	33	333	-	11	129	-	6	64	-	-	3	-	36	
Dededo.....	120	2,751	-	59	712	-	16	1,009	-	-	21	-	420	
Inarajan.....	68	441	-	22	173	-	8	183	6	2	1	17	22	
Mangilao.....	93	1,222	45	28	454	100	11	181	-	-	8	-	828	
Merizo.....	60	591	-	19	207	-	5	99	-	1	-	5	-	
Mongmong, Toto, and Maite.....	5	240	-	2	24	-	4	127	-	-	3	-	139	
Piti.....	14	303	-	7	47	9	2	15	-	-	1	-	25	
Santa Rita.....	59	417	-	15	55	-	6	30	-	1	8	1	39	
Sinajana.....	5	21	-	-	-	-	-	-	-	-	1	-	50	
Talofofo.....	48	1,275	206	24	394	175	8	80	-	1	8	2	139	
Tamuning.....	3	34	-	-	-	-	-	-	-	-	7	-	102	
Umatac.....	19	145	-	8	76	-	2	13	-	1	1	50	6	
Yigo.....	69	1,005	64	-	-	-	16	705	-	-	8	-	86	
Yona.....	46	554	-	14	66	-	8	51	-	-	13	-	706	

¹1975 data cover only poultry not specified separately; 1970 data cover all poultry except chickens 4 months old and over.

Table 18. Chicken Eggs and Fish, by Election Districts: 1975 and 1970

	Chicken eggs				Fish, 1975		
	Farms		Dozens sold		Farms	Pounds harvested	Pounds sold
	1975	1970	1975	1970			
Guam, total.....	63	63	1,838,749	854,214	13	6,880	1,790
Agana.....	-	-	-	-	-	-	-
Agana Heights.....	-	1	-	13,500	-	-	-
Agat.....	3	2	671,925	115,562	-	-	-
Asan.....	3	1	4,100	3	-	-	-
Barrigada.....	8	11	250,740	141,485	3	153	-
Chalan Pago and Ordot.....	-	2	-	6,200	-	-	-
Dededo.....	11	14	89,957	101,373	3	425	150
Inarajan.....	1	4	(D)	197,286	-	-	-
Mangilao.....	23	7	79,192	40,400	-	-	-
Merizo.....	8	1	17,730	3,000	4	3,000	1,640
Mongmong, Toto, and Maite.....	1	1	8,500	4,000	-	-	-
Piti.....	3	1	6,850	20,000	1	300	-
Santa Rita.....	-	2	-	1,005	-	-	-
Sinajana.....	-	-	-	-	-	-	-
Talofofo.....	2	-	(D)	-	1	3,000	-
Tamuning.....	-	3	-	43,600	-	-	-
Umatac.....	-	-	-	-	1	2	-
Yigo.....	-	7	-	122,300	-	-	-
Yono.....	-	6	-	44,500	-	-	-

Table 19. Off-Farm Work by Election Districts: 1975 and 1970

	All farm operators		Operators reporting -									
			Off-farm work								No off-farm work	
			Total		1 to 99 days		100 to 199 days		200 days or more			
			1975	1970	1975	1970	1975	1970	1975	1970	1975	1970
Guam, total.....	1,576	1,121	1,341	775	210	153	206	103	925	519	168	132
Agana.....	4	39	4	20	-	1	-	1	4	18	-	9
Agana Heights.....	90	69	90	44	-	13	-	1	90	30	-	16
Agat.....	85	93	76	31	3	13	9	8	64	10	9	-
Asan.....	85	22	83	3	4	-	37	-	42	3	-	3
Barrigada.....	105	114	70	90	5	14	3	11	62	65	35	20
Chalan Pago and Ordot.....	48	36	35	31	1	4	-	3	34	24	13	2
Dededo.....	238	168	174	130	28	29	10	16	136	85	10	23
Inarajan.....	119	59	94	34	13	17	26	2	55	15	24	12
Mangilao.....	140	64	130	59	23	10	10	14	97	35	10	3
Merizo.....	115	12	112	9	10	2	53	1	49	6	2	1
Mongmong, Toto, and Maite.....	13	46	13	38	1	11	9	1	3	26	-	1
Piti.....	20	4	20	2	2	2	5	-	13	-	-	2
Santa Rita.....	114	80	99	23	-	8	2	3	97	12	12	6
Sinajana.....	7	12	6	10	-	5	-	-	6	5	1	-
Talofofo.....	82	75	63	59	19	10	3	13	41	36	17	12
Tamuning.....	26	48	26	42	7	1	14	1	5	40	-	5
Umatac.....	50	9	45	6	10	1	5	1	30	4	4	-
Yigo.....	165	82	137	72	69	4	14	6	54	62	25	7
Yona.....	70	89	64	72	15	8	6	21	43	43	6	10

Table 20. Operator Characteristics by Election Districts: 1975 and 1970

	Place of residence								Years on farm							
	Operators reporting						Operators not reporting		Operators reporting							
	Total		On farm		Off farm				Total		Under 2 years		2 to 4 years			
	1975	1970	1975	1970	1975	1970	1975	1970	1975	1970	1975	1970	1975	1970		
Guam, total.....	1,571	925	1,444	759	127	166	5	196	1,575	848	240	123	340	170		
Agana.....	4	36	4	36	-	-	-	3	4	32	2	1	-	4		
Agana Heights.....	90	56	88	52	2	4	-	13	90	63	5	8	6	12		
Agat.....	85	36	80	34	5	2	-	57	84	34	23	3	14	4		
Asan.....	84	8	84	8	-	-	1	14	85	7	9	1	10	-		
Barrigada.....	105	111	100	80	5	31	-	3	105	93	15	10	19	21		
Chalan Pago and Ordot.....	48	35	46	29	2	6	-	1	48	32	5	2	13	3		
Dededo.....	240	160	230	139	10	21	-	8	240	162	28	44	91	49		
Inarajan.....	119	42	102	31	17	11	-	17	119	40	17	3	22	5		
Mangilao.....	140	60	132	57	8	3	-	4	140	38	18	4	24	9		
Merizo.....	114	11	96	10	18	1	1	1	115	8	20	1	18	-		
Mongmong, Toto, and Maite.....	13	44	13	43	-	1	-	2	13	41	1	2	-	12		
Piti.....	20	3	20	3	-	-	-	1	20	3	-	-	-	-		
Santa Rita.....	114	32	113	31	1	1	-	48	114	27	17	4	37	3		
Sinajana.....	7	12	6	10	1	2	-	-	7	12	-	-	2	3		
Talofofo.....	81	70	72	31	9	39	-	5	81	71	14	14	14	15		
Tamuning.....	26	45	25	42	1	3	-	3	26	21	3	2	5	6		
Umatac.....	48	5	39	1	9	4	2	4	50	6	11	-	12	3		
Yigo.....	164	81	135	77	29	4	-	1	164	78	38	14	44	11		
Yona.....	69	78	59	45	10	33	1	11	70	80	14	10	9	10		
	Years on farm—Continued						Age									
	Operators reporting—Continued				Operators not reporting		Operators reporting									
	5 to 9 years		10 years and over				Total		Under 25 years		25 to 34 years		35 to 44 years		45 to 54 years	
	1975	1970	1975	1970	1975	1970	1975	1970	1975	1970	1975	1970	1975	1970		
Guam, total.....	258	192	737	363	1	273	1,574	876	28	10	172	83	344	225	511	258
Agana.....	-	10	2	17	-	7	4	37	-	1	1	4	2	13	-	8
Agana Heights.....	18	10	61	33	-	6	90	63	3	1	6	5	21	17	26	19
Agat.....	12	10	35	17	1	59	85	35	3	-	6	2	10	14	34	7
Asan.....	13	3	53	3	-	15	85	7	2	-	6	-	12	1	35	2
Barrigada.....	13	19	58	43	-	21	105	92	2	-	16	7	11	21	35	25
Chalan Pago and Ordot.....	3	9	27	18	-	4	48	33	-	1	4	4	14	9	18	7
Dededo.....	56	26	65	43	-	6	237	160	1	2	42	15	65	40	68	48
Inarajan.....	13	11	67	21	-	19	119	38	-	-	19	5	16	5	29	12
Mangilao.....	25	11	73	14	-	26	140	40	3	-	17	5	35	13	43	14
Merizo.....	14	1	63	6	-	4	115	8	3	-	13	-	25	-	34	6
Mongmong, Toto, and Maite.....	1	12	11	15	-	5	13	39	-	-	-	4	3	14	7	13
Piti.....	3	2	17	1	-	1	20	3	-	-	1	-	3	-	6	2
Santa Rita.....	21	5	39	15	-	53	114	28	2	-	4	2	34	5	38	7
Sinajana.....	1	3	4	6	-	-	7	12	-	1	1	-	-	2	3	3
Talofofo.....	14	16	39	26	-	4	82	72	3	1	11	6	13	23	20	20
Tamuning.....	8	6	10	7	-	27	26	45	1	-	-	6	8	12	9	14
Umatac.....	7	-	20	3	-	3	49	6	2	-	6	1	16	1	19	3
Yigo.....	24	19	58	34	-	4	165	79	1	2	15	7	40	17	62	27
Yona.....	12	19	35	41	-	9	70	79	2	1	4	10	16	18	25	21

Table 20. Operator Characteristics by Election Districts: 1975 and 1970—Continued

	Age—Continued								Main occupation							
	Operators reporting—Continued						Operators not reporting		Operators reporting						Operators not reporting	
	55 to 64 years		65 years and over		Average age (years)				Total		Agricultural		Nonagricultural			
	1975	1970	1975	1970	1975	1970	1975	1970	1975	1970	1975	1970	1975	1970	1975	1970
Guam, total.....	333	188	184	112	49	50	2	245	1,570	913	266	168	1,304	745	6	208
Agana.....	1	6	-	5	41	48	-	2	4	38	-	1	4	37	-	1
Agana Heights.....	23	15	9	6	50	50	-	6	90	62	-	5	90	57	-	7
Agat.....	16	6	16	6	50	50	-	58	85	34	9	7	76	27	-	59
Asan.....	21	4	9	-	51	54	-	15	83	8	9	-	74	8	2	14
Barrigada.....	27	27	14	12	51	53	-	22	105	111	23	17	82	94	-	3
Chalan Pago and Ordot.....	6	6	6	6	48	49	-	3	48	34	9	3	39	31	-	2
Dededo.....	41	36	20	19	47	50	1	8	238	159	53	29	185	130	-	9
Inarajan.....	34	8	21	8	52	52	-	21	119	39	31	16	88	23	-	20
Mangilao.....	22	3	20	5	49	48	-	24	140	63	21	10	119	53	-	1
Merizo.....	29	2	11	-	49	53	-	4	115	8	6	5	109	3	-	4
Mongmong, Toto, and Maite.....	2	5	1	3	51	47	-	7	13	43	3	2	10	41	-	3
Piti.....	8	1	2	-	53	53	-	1	20	4	10	1	10	3	-	-
Santa Rita.....	23	10	13	4	50	53	-	52	114	29	5	10	109	19	-	51
Sinajana.....	3	4	-	2	57	53	-	-	7	11	-	3	7	8	-	1
Talofofo.....	21	12	14	10	50	49	-	3	81	69	22	23	59	46	1	6
Tamuning.....	6	9	2	4	49	48	-	3	26	43	-	4	26	39	-	5
Umatac.....	5	1	1	-	44	47	1	3	49	5	10	5	39	-	1	4
Yigo.....	30	14	17	12	49	50	-	3	163	79	39	14	124	65	2	3
Yona.....	15	19	8	10	50	50	-	10	70	74	16	13	54	61	-	15

Table 21. Farms by Source of Financing, by Election Districts: 1975

	Percent operator financing					Percent private financing					Percent commercial financing				
	100	75 to 99	50 to 74	25 to 49	Less than 25	100	75 to 99	50 to 74	25 to 49	Less than 25	100	75 to 99	50 to 74	25 to 49	Less than 25
Guam, total.....	1,357	19	46	7	8	47	1	12	3	4	17	4	24	13	6
Agana.....	-	-	-	-	-	-	-	-	-	-	-	-	-	-	-
Agana Heights.....	90	-	-	-	-	-	-	-	-	-	-	-	-	-	-
Agat.....	62	-	1	-	-	4	-	1	-	-	9	-	1	-	-
Asan.....	84	-	-	-	1	-	-	-	-	-	-	-	-	-	-
Barrigada.....	60	5	5	2	4	9	-	-	-	1	1	4	4	3	-
Chalan Pago and Ordot.....	43	-	-	-	-	-	-	2	-	-	-	-	-	-	-
Dededo.....	187	1	1	3	-	26	-	3	2	-	5	-	4	-	-
Inajaran.....	117	-	5	-	-	-	-	1	-	-	-	-	-	-	1
Mangilao.....	129	3	3	1	-	2	-	2	-	2	-	-	1	2	-
Merizo.....	110	-	3	-	-	-	-	2	-	-	-	-	-	-	-
Mongmong, Toto, and Maite.....	13	-	-	-	-	-	-	-	-	-	-	-	-	-	-
Piti.....	19	-	11	-	-	-	-	-	1	-	-	-	-	-	-
Santa Rita.....	66	11	16	1	3	1	1	1	-	-	1	-	14	7	3
Sinajana.....	2	-	-	-	-	-	-	-	-	-	-	-	-	-	-
Talofofo.....	76	-	-	-	-	4	-	-	-	-	1	-	-	-	-
Tamuning.....	25	-	-	-	-	-	-	-	-	-	-	-	-	-	-
Umatac.....	49	-	1	-	-	-	-	-	-	-	-	-	-	-	-
Yigo.....	156	-	-	-	-	1	-	-	-	1	-	-	-	1	2
Yona.....	69	-	-	-	-	-	-	-	-	-	-	-	-	-	-

	Percent government financing					Percent other source financing					Farms not reporting
	100	75 to 99	50 to 74	25 to 49	Less than 25	100	75 to 99	50 to 74	25 to 49	Less than 25	
Guam, total.....	13	8	7	5	11	77	5	1	-	3	11
Agana.....	-	-	-	-	-	4	-	-	-	-	-
Agana Heights.....	-	-	-	-	-	-	-	-	-	-	-
Agat.....	5	-	1	-	-	-	-	-	-	-	3
Asan.....	-	1	-	-	-	-	-	-	-	-	1
Barrigada.....	-	2	-	-	5	1	1	-	-	2	1
Chalan Pago and Ordot.....	-	-	-	-	-	3	-	-	-	-	-
Dededo.....	1	2	1	-	1	59	-	-	-	1	-
Inajaran.....	-	-	1	1	-	-	-	-	-	-	-
Mangilao.....	1	-	-	-	-	-	1	1	-	-	-
Merizo.....	-	-	2	-	-	-	-	-	-	-	-
Mongmong, Toto, and Maite.....	-	-	-	-	-	-	-	-	-	-	-
Piti.....	-	-	-	-	-	-	-	-	-	-	-
Santa Rita.....	5	2	1	4	3	-	-	-	-	-	6
Sinajana.....	-	-	-	-	-	5	-	-	-	-	-
Talofofo.....	1	-	-	-	-	-	-	-	-	-	-
Tamuning.....	-	-	-	-	-	1	-	-	-	-	-
Umatac.....	-	-	1	-	-	-	-	-	-	-	-
Yigo.....	-	-	-	-	2	4	3	-	-	-	-
Yona.....	-	1	-	-	-	-	-	-	-	-	-

Table 22. Type of Holding by Election Districts: 1975 and 1970

	Holdings producing mainly for home consumption		Holdings producing mainly for sale										Farms not reporting	
			Total		Crops		Livestock and poultry		Mixed		Other			
	1975	1970	1975	1970	1975	1970	1975	1970	1975	1970	1975	1970	1975	1970
Guam, total.....	1,408	922	168	155	68	32	50	92	41	30	9	1	1	44
Agana.....	4	39	-	-	-	-	-	-	-	-	-	-	-	-
Agana Heights.....	89	65	-	4	-	-	-	4	-	-	-	-	1	-
Agat.....	84	77	1	7	-	-	1	7	-	-	-	-	-	9
Asan.....	84	17	1	2	-	-	-	1	1	1	-	-	-	3
Barrigada.....	94	87	11	20	3	4	5	13	3	3	-	-	-	7
Chalan Pago and Ordot.....	45	30	3	6	-	1	3	3	-	2	-	-	-	-
Dededo.....	203	150	37	18	13	4	10	13	13	1	1	-	-	-
Inarajan.....	108	45	13	13	6	6	1	5	6	2	-	-	-	1
Mangilao.....	132	52	9	12	2	-	2	11	5	-	-	1	-	-
Merizo.....	90	7	25	5	15	3	8	1	-	1	2	-	-	-
Mongmong, Toto, and Maite.....	10	43	3	1	-	1	2	-	1	-	-	-	-	2
Piti.....	16	1	4	2	-	-	4	2	-	-	-	-	-	1
Santa Rita.....	111	59	1	11	1	1	-	4	-	6	-	-	-	10
Sinajana.....	7	9	-	-	-	-	-	-	-	-	-	-	-	3
Talofofo.....	60	57	21	16	12	6	2	5	6	5	1	-	-	2
Tamuning.....	25	42	1	4	1	-	-	4	-	-	-	-	-	2
Umatac.....	49	7	1	1	1	-	-	1	-	-	-	-	-	1
Yigo.....	129	62	35	19	14	4	10	10	6	5	5	-	-	1
Yona.....	68	73	2	14	-	2	2	8	-	4	-	-	-	2

Table 23. Farm Labor and Specified Facilities on Farms, by Election Districts: 1975

	All farms reporting	Farm labor by days worked						Farms not reporting	Farms reporting specified facilities		
		Unpaid workers			Paid workers				Running water	Electricity	No running water or electricity
		Less than 25 days	25 to 149 days	150 days or more	Less than 25 days	25 to 149 days	150 days or more				
Guam, total.....	1,571	232	1,386	1,731	11	5	131	5	1,409	1,338	105
Agana.....	4	-	-	4	-	-	-	-	4	4	-
Agana Heights.....	90	-	5	166	-	-	-	-	90	90	-
Agat.....	85	14	37	85	-	-	25	-	80	79	4
Asan.....	83	4	53	107	-	-	-	2	83	83	1
Barrigada.....	105	6	95	154	-	1	5	-	99	98	3
Chalan Pago and Ordot.....	46	12	9	55	-	-	-	2	46	44	2
Dededo.....	239	25	284	294	1	-	1	1	176	193	11
Inarajan.....	119	7	134	50	-	-	-	-	109	106	9
Mangilao.....	140	58	76	157	-	-	71	-	138	132	2
Merizo.....	115	22	60	122	-	-	-	-	104	99	10
Mongmong, Toto, and Maite.....	13	-	33	32	-	-	-	-	13	11	-
Piti.....	20	-	29	40	-	-	-	-	16	13	1
Santa Rita.....	114	1	178	36	-	1	3	-	114	110	-
Sinajana.....	7	-	1	6	-	-	-	-	6	6	1
Talofofo.....	81	16	60	102	10	2	22	-	70	64	11
Tamuning.....	26	3	71	28	-	-	-	-	24	23	2
Umatac.....	50	10	29	119	-	-	-	-	38	23	12
Yigo.....	164	28	190	105	-	1	4	-	143	121	22
Yona.....	70	26	42	69	-	-	-	-	56	39	14

APPENDIX A. General Explanation

General Information

The following definitions and explanations relate to those items that are considered to be inadequately described in the tables. Most of the definitions come from the instructions given to enumerators. For an exact wording of the questions and instructions on the questionnaire, see the facsimile of the questionnaire in appendix B.

In the tables, the data for land in farms, land use, fruit and nut trees, and livestock and poultry on hand represent the situation existing at the time of enumeration of each farm. The 1974 census enumeration began on January 27, 1975; the 1970 census enumeration began on April 1, 1970. All other data, such as that relating to hectares, production, sales, hired workers, and workpower used, are for the calendar years 1974 and 1969.

Farm Operator

The term "farm operator" designates a person who operates a farm, either by doing the work himself or by directly supervising the work. He may be the owner, a member of the owner's household, a tenant or renter, the manager, or the person in charge of an institutional farm. By definition, the number of farm operators is the same as the number of farms.

Farms or Operators Reporting

Figures for "farms" represent the number of farms for which the specified item was reported. The difference between the total number of farms and the number of

farms reporting a particular item represents the number of farms not having that item, provided a correct report was received for all farms.

Where applicable, figures are given for the number of farms or operators not reporting items that were intended to be reported for all farms; for an example, see the item "Years on farm."

Land

Land in farms—All data relating to land tenure and land in farms refer to land operated on the day of enumeration. The land to be included in each farm was determined from the answers to questions 1 through 7 in section 2 of the agriculture questionnaire (see appendix B). The amounts of land reported as owned, rented from others, used under permit, occupied without permit, and furnished by the government were added together, and the amount of land reported as rented to others was subtracted from that sum. The result represents "Land in farms." Although the area designated land in farms consists primarily of agricultural land—i.e., land used for crops, pasture, or grazing—it also includes areas of land not actually under cultivation nor used for pasture or grazing. For example, woodland and wasteland owned or rented from others was included as land in farms unless reports indicated it was being held for nonagricultural purposes.

Land owned—This item includes all land the operator and/or his wife held under title, purchase contract, homestead law, or as heir or trustee of an undivided estate at the time of enumeration. How-

ever, all land used by the U.S. military services was excluded even though owned by the operator.

Land rented to others—This item includes all land the operator rented or leased to others and all land that he assigned to others on shares or rent free. For the most part, the land rented to others represents agricultural land, but it also includes land rented for residential or other purposes. The tenant is considered to be the operator of land leased, rented, or worked on shares, even though his landlord may supervise his operations. The landlord is considered to be the operator of only that portion of the land not assigned to his tenants.

Land rented from others—This item includes not only land that the operator rented or leased from others, but also land he worked on shares for others and land he occupied rent free.

Land occupied by permit—Rights to use land owned or controlled by the Government of Guam are in the form of permits rather than lease or rental arrangements. Accordingly, this item includes all land for which the operator had a Government of Guam permit.

Land occupied without permit—This item includes all land that the operator occupied as a "borrower" or "non-permittee," without any ownership rights to the land, or without any kind of permit, lease, or rental agreement.

Land furnished by Government—This item includes all land that the Govern-

APPENDIX A Continued

ment of Guam furnished to the operator in connection with his living quarters.

Land Use

Land in farms at the time of enumeration has been distributed according to the way it was being used on enumeration day. The land uses described in the following paragraphs are mutually exclusive in that each hectare of land is counted only once even though it may have had more than one use during the year.

Cropland used for crops—This item refers to all land planted in crops at the time of enumeration. Land was to be reported only once even if two or more crops were planted on it. Land in crops includes (1) land in bearing and nonbearing fruit and nut trees or plants or any other tree crops, (2) land that had partial, but not total, crop failure; and (3) land in home gardens.

Cropland used for pasture—This item includes all cropland on the place that was used only for pasture. Land planted in crops, even though the crops were not to be harvested, was not to be included here.

Cropland not used for crops or pasture—This item refers to all cropland on the place that was not used for crops or pasture. It does not include land so hilly, rocky, or wet that the cost of improving it for cultivation would be more than the operator could pay. Nor does it include land in roads, streams, or swamps. It does include land on which there was total crop failure due to flood, drought, insects, fire, or other causes; cropland lying idle; and cropland planted with soil improvement grass, or other cover crops planted for the purpose of improvement.

Pastureland used for pasture or grazing—This pastureland includes all land used for grazing livestock at the time of enumeration. It does not include cropland even though cattle or other livestock may have been grazed on it.

Pastureland not used for pasture or grazing—This pastureland refers to all land suitable for pasture or grazing that was not being used for grazing livestock at the time of enumeration. It includes land that, in the opinion of the operator, could have supported enough plant growth, either native or planted, for grazing provided the clearing and grazing of the land would not seriously damage it.

All other land—This item includes all land not qualifying as either cropland or pastureland as defined above. It includes land in house lots, barn lots, ponds, ditches, swamps, steep slopes, roads, brushland, wasteland, and forest areas.

Type of Holding

The purpose of the items under this heading was to classify holdings according to whether their production was mainly for home consumption or mainly for sale, and to classify the holdings whose production was mainly for sale by the most important types of agricultural production.

The production figures for home consumption are based on the agricultural output of the holding during 1974. Agricultural output refers to the part left after rent has been paid to the landlord and/or the part left after deduction of the produce used on the holding for further agricultural production, such as for forage or seed.

Holding with production mainly for home consumption—This type applies to holdings which produce mainly for home consumption; i.e., that 50 percent or more of the agricultural output of the holding is consumed by the holder's household.

Holding with production mainly for sale—This type applies to holdings where 50 percent or more of the agricultural output of the holding is produced for sale. Holdings which produce mainly for sale are classified further according to their most important activity.

Crop holdings are those on which 50 percent or more of the value of sales was from the sale of crops.

Livestock and/or poultry holdings are those on which 50 percent or more of the value of sales was from the sale of livestock, livestock products, poultry, or poultry products.

Mixed holdings are those on which neither the sale of crops nor the sale of livestock and/or poultry nor home consumption accounts for 50 percent or more of the value of sales.

Other holdings are those that do not belong to any of the previous groups.

Crops Harvested

The questionnaire contained individual inquiries for crops commonly grown and a space to write in the name of crops less frequently grown. The information requested for 1974 was on the area of each crop harvested, on pounds harvested, and, for the first time, on pounds sold.

Vegetables and field crops—The total quantity of each vegetable and field crop harvested and the quantity sold during 1974 was always to be reported, even when the area harvested amounted to less than 10 ares.

When two or more crops, or two or more plantings of the same crop, were harvested from the same land during the year, the area was to be reported for each separate crop or planting.

Fruits and nuts—For fruits grown on farms, information was obtained on the total quantity harvested and on the quantity sold during the year. Data were collected also for the number of trees or plants, both bearing and nonbearing, that were on the place on enumeration day. For breadfruit, betelnuts, coconuts, guavas, soursops, starfruits, anonas, and other wild or cultivated fruits, nuts, or crops, the reported data represent total quantities harvested or gathered during the year.

APPENDIX A Continued

by all members of the operator's household, both from land on the farm and other land.

Livestock, Poultry, and Fish

Data for livestock and poultry relate to the number on hand at the time of enumeration. All livestock and poultry were to be enumerated on the place where they were at the time of the enumeration regardless of who owned them.

Sales data were collected for all livestock and poultry sold from the place in 1974, as well as the dozens of eggs and quarts of milk sold.

Data for pounds of fish harvested and sold relate to the calendar year 1974 and were collected for the first time in the 1974 Census of Agriculture.

Cattle and calves—Within this category, "Milk cows" are cows that had been milked at any time during the preceding 12 months. "All other" refers to cattle and calves other than milk cows. Livestock sales data are for the calendar year 1974.

Mechanical and Animal Power

Sources of workpower refer to those used only for agricultural activities on the place in 1974 whether or not the animal or mechanical power used belonged to the operator.

Operator Characteristics

Residence of operator—Farm operators were classified by residence according to whether or not they lived on the farms they were operating. Some of those who did not live on the farms they operated themselves lived on farms operated by others. Where all the land was rented from others or worked on shares for others, the operator was considered to live on the farm operated provided the dwelling he occupied was included in the rental agreement. In such cases, the dwell-

ing was not necessarily on the land being operated. Similarly, a farm operator who did not live on the land being cultivated or grazed, but who had some agricultural operations (other than a home garden) at his dwelling, was considered to be living on the farm operated.

Year began operating present farm—Enumerators were instructed to obtain the year a farm operator began to operate the farm, i.e., the first year the operator took continuous charge of his present farm or any part of it.

Work off farm—Data for work off farm were collected for 1969 and 1974. Off-farm work was enumerated to provide information on the extent of part-time farming in Guam. Farm operators reporting off-farm work in 1974 varied from those who worked full time for the military installations to those who supplemented their income with odd or spare-time jobs.

Only work by the farm operator for pay was to be reported. Days worked off the place were to include work at a job such as clerk, salesman, laborer, or truck driver; at a nonfarm business such as operating a store or repair shop; or at a profession such as doctor, lawyer, or teacher. Exchange work was not to be reported.

Farm Classifications

This report presents detailed data for farms classified by size of farm and tenure of farm operator.

Farms by size—Farms were classified by size on the basis of the total land area established in each one. According to the census definition, a farm is essentially an operating unit not an ownership tract. All land operated or managed by one person or partnership represents one farm. In case of share-tenants, the land assigned to each share-tenant is considered a separate farm, even though the landlord may consider his entire landholding to be one unit rather than several separate units.

Farms by tenure of operator—Farms were classified by tenure of operator on the basis of information reported for land owned, rented from others, operated under a government permit, operated without a permit (nonpermittee), or furnished by the Government of Guam in connection with the operator's living quarters. During the processing operations, each questionnaire was coded to indicate whether the farm operator was a full owner, part owner, tenant, permittee, nonpermittee, or other operator.

Full owners operate only land owned or land owned plus land operated under a permit, without a permit, or in connection with living quarters furnished by the Government of Guam.

Part owners operate land owned plus land rented from others. They may also operate land under a permit, without a permit, or furnished by the Government of Guam in connection with their living quarters.

Tenants operate only land rented from others or land rented plus land under a permit, without a permit, or furnished by the Government of Guam in connection with their living quarters.

Permittees operate land under a permit from the Government of Guam for all the land operated, or they may operate some of the land under a permit and the remainder of the land without a permit.

Nonpermittees operate "borrowed" land. They do not own or rent the land, operate the land under a permit, or use the land under any arrangement with the Government of Guam.

Others are operators who do not qualify for any of the foregoing groups. All the land is furnished by the Government of Guam in connection with their living quarters, or part of the land is operated without a permit and part is furnished by the Government of Guam in connection with their living quarters.

APPENDIX B. Report Form

Form Approved: O.M.B. No. 41-574082

FORM 74-A1(G) (8-30-74)	U.S. DEPARTMENT OF COMMERCE SOCIAL AND ECONOMIC STATISTICS ADMIN. BUREAU OF THE CENSUS	NOTICE - Response to this inquiry is required by law (Title 13, U.S. Code). By the same law your report to the Census Bureau is confidential. It may be seen only by sworn Census employees and may be used only for statistical purposes. Your report cannot be used for purposes of taxation, investigation, or regulation.																								
A1 1974 CENSUS OF AGRICULTURE G U A M																										
IMPORTANT: Fill this questionnaire if any member of the household harvested (or gathered) any crops or vegetables during 1974, or has any livestock or 15 or more poultry.		FARM SERIAL NUMBER → From A2, column (6)																								
CENSUS USE ONLY	010 011 012 013 014																									
Section 1 OPERATOR																										
1. What is your (the operator's) name?	Full name (First name, middle initial, last name)																									
2. What is your (the operator's) mailing address? (Give address where correspondence is received.)	Complete mailing address																									
Section 2 LAND IN AGRICULTURE																										
1. How many hectares do you own?	<input type="checkbox"/>	<table border="1" style="width:100%; border-collapse: collapse;"> <thead> <tr> <th style="width:10%;">None</th> <th style="width:10%;">Hectares</th> <th style="width:10%;">Ares</th> </tr> </thead> <tbody> <tr> <td style="text-align: center;">040</td> <td></td> <td></td> </tr> <tr> <td style="text-align: center;">050</td> <td></td> <td></td> </tr> <tr> <td style="text-align: center;">051</td> <td></td> <td></td> </tr> <tr> <td style="text-align: center;">052</td> <td></td> <td></td> </tr> <tr> <td style="text-align: center;">053</td> <td></td> <td></td> </tr> <tr> <td style="text-align: center;">060</td> <td></td> <td></td> </tr> <tr> <td style="text-align: center;">070</td> <td></td> <td></td> </tr> </tbody> </table>	None	Hectares	Ares	040			050			051			052			053			060			070		
None	Hectares	Ares																								
040																										
050																										
051																										
052																										
053																										
060																										
070																										
2. How many hectares do you rent from others?	<input type="checkbox"/>																									
3. For how many hectares do you have a government land permit?	<input type="checkbox"/>																									
4. How many hectares do you occupy without a land permit?	<input type="checkbox"/>																									
5. How many hectares are furnished to you, in connection with your living quarters, by the government?	<input type="checkbox"/>																									
6. How many hectares do you rent to others? (Do not include land used by U.S. military services.)	<input type="checkbox"/>																									
7. TOTAL AREA IN THIS PLACE (ADD the entries in items 1, 2, 3, 4, and 5, then SUBTRACT the entry in item 6.) →	070																									
8. Is the farm located on a hard surface (all weather) road?	071 1 <input type="checkbox"/> Yes 2 <input type="checkbox"/> No - About how many miles is it to the nearest hard surface (all weather) road?																									
	<table border="1" style="width:100%; border-collapse: collapse;"> <thead> <tr> <th style="width:10%;">Miles</th> <th style="width:10%;">Tenths</th> </tr> </thead> <tbody> <tr> <td style="text-align: center;">072</td> <td style="text-align: center;">/ 10</td> </tr> </tbody> </table>		Miles	Tenths	072	/ 10																				
Miles	Tenths																									
072	/ 10																									
9. What percent of the farm operation is financed by each of the following sources? ...	<table border="1" style="width:100%; border-collapse: collapse;"> <thead> <tr> <th style="width:10%;">None</th> <th style="width:10%;">Percent</th> </tr> </thead> <tbody> <tr> <td style="text-align: center;">073</td> <td></td> </tr> <tr> <td style="text-align: center;">074</td> <td></td> </tr> <tr> <td style="text-align: center;">075</td> <td></td> </tr> <tr> <td style="text-align: center;">076</td> <td></td> </tr> </tbody> </table>		None	Percent	073		074		075		076															
None	Percent																									
073																										
074																										
075																										
076																										
a. Private																										
b. Commercial																										
c. Government																										
d. Other - Specify _____																										
10. How many unpaid and paid farm hands (including the operator and his family) worked on this place in 1974?	081 _____ Total farm hands																									
a. Of the unpaid farm hands (including the operator and unpaid family workers), how many worked -	<table border="1" style="width:100%; border-collapse: collapse;"> <thead> <tr> <th style="width:33%;">150 days or more?</th> <th style="width:33%;">25 to 149 days?</th> <th style="width:33%;">Less than 25 days?</th> </tr> </thead> <tbody> <tr> <td style="text-align: center;">082</td> <td style="text-align: center;">1</td> <td style="text-align: center;">2</td> </tr> <tr> <td style="text-align: center;">083</td> <td style="text-align: center;">1</td> <td style="text-align: center;">2</td> </tr> </tbody> </table>		150 days or more?	25 to 149 days?	Less than 25 days?	082	1	2	083	1	2															
150 days or more?	25 to 149 days?	Less than 25 days?																								
082	1	2																								
083	1	2																								
b. Of the paid farm hands (hired workers and paid members of operator's family), how many worked -																										
11. Does the farm have running water?	091 1 <input type="checkbox"/> Yes 2 <input type="checkbox"/> No																									
12. Does the farm have electrical power?	092 1 <input type="checkbox"/> Yes 2 <input type="checkbox"/> No																									
13. Is this holding producing mainly for home consumption or sale?	093 1 <input type="checkbox"/> Home consumption - Go to Section 3 2 <input type="checkbox"/> Sale - Ask item 14																									
14. Is it a cropholding, livestock and/or poultry holding, mixed holding, or some other type of holding?	094 1 <input type="checkbox"/> Cropholding 2 <input type="checkbox"/> Livestock and/or poultry holding 3 <input type="checkbox"/> Mixed holding 4 <input type="checkbox"/> Other - Specify _____																									

Section 3 CROPS HARVESTED IN 1974					
<p>● Were any of these VEGETABLES AND FIELD CROPS harvested in 1974?</p>	None	How many hectares were harvested in 1974?		How many POUNDS were harvested in 1974?	How many POUNDS were sold in 1974?
		(a)		(b)	(c)
		Hectares	Ares		
1. Taro	<input type="checkbox"/>	101	1	2	
2. Yams	<input type="checkbox"/>	102	1	2	
3. Sweetpotatoes	<input type="checkbox"/>	103	1	2	
4. Tapioca (cassava)	<input type="checkbox"/>	104	1	2	
5. Gado and other wild root crops	<input type="checkbox"/>	105	1	2	
6. Radishes	<input type="checkbox"/>	106	1	2	
7. Tomatoes	<input type="checkbox"/>	107	1	2	
8. Head cabbage	<input type="checkbox"/>	108	1	2	
9. Chinese cabbage	<input type="checkbox"/>	109	1	2	
10. Green beans	<input type="checkbox"/>	110	1	2	
11. Green onions	<input type="checkbox"/>	111	1	2	
12. Corn	<input type="checkbox"/>	112	1	2	
13. Cucumbers	<input type="checkbox"/>	113	1	2	
14. Eggplant	<input type="checkbox"/>	114	1	2	
15. Peppers	<input type="checkbox"/>	115	1	2	
16. Pumpkins and squash	<input type="checkbox"/>	116	1	2	
17. Watermelons	<input type="checkbox"/>	117	1	2	
18. Cantaloupes	<input type="checkbox"/>	118	1	2	
19. Muskmelons and pepinos	<input type="checkbox"/>	119	1	2	
20. Bittermelons	<input type="checkbox"/>	120	1	2	
21. Other crops - Specify	<input type="checkbox"/>		1	2	
_____			1	2	
_____			1	2	

<p>● Were any of the following FRUITS OR NUTS harvested or gathered by you or your family in 1974?</p>	None	How many trees or plants (of all ages) are on this place?		How many POUNDS were harvested in 1974?	How many POUNDS were sold in 1974?
		(a)		(b)	(c)
22. Avocados	<input type="checkbox"/>	131	1	2	
23. Bananas	<input type="checkbox"/>	132	1	2	
24. Grapefruit	<input type="checkbox"/>	133	1	2	
25. Oranges	<input type="checkbox"/>	134	1	2	
26. Tangerines	<input type="checkbox"/>	135	1	2	
27. Lemons and limes	<input type="checkbox"/>	136	1	2	
28. Mangos	<input type="checkbox"/>	137	1	2	
29. Papayas	<input type="checkbox"/>	138	1	2	
30. Pineapples	<input type="checkbox"/>	139	1	2	
31. Breadfruit	<input type="checkbox"/>	140	1	2	
32. Coconuts	<input type="checkbox"/>	141	1	2	
33. Betelnuts	<input type="checkbox"/>	142	1	2	
34. Starfruit	<input type="checkbox"/>	143	1	2	
35. Guavas	<input type="checkbox"/>	144	1	2	
36. Soursops	<input type="checkbox"/>	145	1	2	
37. Sweetsops	<input type="checkbox"/>	146	1	2	
38. Other fruits (anonas, etc.) - Specify	<input type="checkbox"/>		1	2	
_____			1	2	

APPENDIX B Continued

Section 4 ▶ LAND USE					
<p>Of the total hectares on this place (Section 2, item 7) –</p> <p>1. How many hectares of land are in crops? <input type="checkbox"/></p> <p>2. How much cropland is used for pasture? <input type="checkbox"/></p> <p>3. How much cropland is not used for crops or pasture? <input type="checkbox"/></p> <p>4. How much pastureland is used for pasture or grazing? <input type="checkbox"/></p> <p>5. How much pastureland is not used for pasture or grazing? <input type="checkbox"/></p> <p>6. How many hectares are in other land? <input type="checkbox"/></p> <p>7. TOTAL LAND (Add entries in items 1 through 6. The total in col. (a) should be equal to the entry in Section 2, item 7.) ➔</p>	None	Number of hectares		On how much of this land are crops or livestock being raised for sale?	
		(a)		(b)	
		Hectares	Ares	Hectares	Ares
	161			1	
	162			1	
	163			1	
	164			1	
	165			1	
	166			1	
	167			1	

Section 5 ▶ LIVESTOCK AND POULTRY					
<p>Do you or anyone else have any of the following livestock and poultry on this place or were any sold from this place in 1974?</p> <p>1. Carabaos of all ages <input type="checkbox"/></p> <p>2. Total cattle and calves of all ages <input type="checkbox"/> (Must equal sum of a and b below.)</p> <p style="margin-left: 20px;">a. Milk cows <input type="checkbox"/></p> <p style="margin-left: 20px;">b. All other cattle and calves <input type="checkbox"/></p> <p>3. Hogs and pigs of all ages <input type="checkbox"/></p> <p>4. Goats and kids of all ages <input type="checkbox"/></p> <p>5. Horses and colts of all ages <input type="checkbox"/></p> <p>6. Chicken hens 4 months old and over <input type="checkbox"/> (Must equal sum of a and b below.)</p> <p style="margin-left: 20px;">a. Commercial layers <input type="checkbox"/></p> <p style="margin-left: 20px;">b. Other chicken hens <input type="checkbox"/></p> <p>7. Ducks <input type="checkbox"/></p> <p>8. Other poultry</p> <p style="margin-left: 20px;">a. Chickens less than 4 months old <input type="checkbox"/></p> <p style="margin-left: 20px;">b. Roosters and pullets <input type="checkbox"/></p> <p style="margin-left: 20px;">c. Geese <input type="checkbox"/></p> <p style="margin-left: 20px;">d. Guineas <input type="checkbox"/></p> <p style="margin-left: 20px;">e. Pigeons <input type="checkbox"/></p> <p style="margin-left: 20px;">f. Other – Specify _____ _____ _____</p>	None	How many are on this place today?		How many were sold in 1974?	
		1974	1975	1974	1975
	171			1	
	172			1	
	173			1	
	174			1	
	175			1	
	176			1	
	177			1	
	181			1	
	182			1	
	183			1	
	184			1	
	185			1	
	186			1	
	187			1	
	188			1	
	189			1	
				1	
				1	
				1	

	None	Number sold in 1974	
9. How many dozens of chicken eggs were sold during 1974? <input type="checkbox"/>	198	Dozens	
10. How many quarts of milk were sold during 1974? <input type="checkbox"/>	199	Quarts	

Section 6 FISHERY																																									
1. What was the total pounds of fish harvested during 1974?	<table border="1" style="width: 100%; border-collapse: collapse;"> <tr> <td style="text-align: center;">None</td> <td style="text-align: center;">Number of pounds</td> </tr> <tr> <td style="text-align: center;"><input type="checkbox"/></td> <td style="text-align: center;">201</td> </tr> <tr> <td style="text-align: center;"><input type="checkbox"/></td> <td style="text-align: center;">202</td> </tr> </table>	None	Number of pounds	<input type="checkbox"/>	201	<input type="checkbox"/>	202																																		
None	Number of pounds																																								
<input type="checkbox"/>	201																																								
<input type="checkbox"/>	202																																								
2. How many pounds were sold in 1974?																																									
Section 7 SOURCE AND OWNERSHIP OF WORKPOWER USED ON THIS PLACE IN 1974																																									
1. MECHANICAL POWER – During 1974 was any agricultural work on this place done by some machine or machines propelled or operated by petroleum, oil, gas, steam, water, wind, or electricity?	211 <input type="checkbox"/> Yes <input type="checkbox"/> No																																								
2. ANIMAL POWER – During 1974 was any agricultural work on this place done by horses, mules, burros, oxen, carabaos, or any other animal?	212 <input type="checkbox"/> Yes <input type="checkbox"/> No																																								
3. Who owned each of the following sources of power which were used on this place during 1974? (Mark as many as apply for each item listed.)																																									
	<table border="1" style="width: 100%; border-collapse: collapse; font-size: small;"> <thead> <tr> <th style="width: 10%;"></th> <th style="width: 12.5%;">You (the operator)</th> <th style="width: 12.5%;">You and another person jointly</th> <th style="width: 12.5%;">Your landlord</th> <th style="width: 12.5%;">A private contractor</th> <th style="width: 12.5%;">A government agency</th> <th style="width: 12.5%;">Other not listed</th> <th style="width: 12.5%;">Not used</th> </tr> </thead> <tbody> <tr> <td>a. Tractor ²²¹</td> <td style="text-align: center;"><input type="checkbox"/></td> <td style="text-align: center;"><input type="checkbox"/></td> <td style="text-align: center;"><input type="checkbox"/></td> <td style="text-align: center;"><input type="checkbox"/></td> <td style="text-align: center;"><input type="checkbox"/></td> <td style="text-align: center;"><input type="checkbox"/></td> <td style="text-align: center;"><input type="checkbox"/></td> </tr> <tr> <td>b. Walking tractor ²²²</td> <td style="text-align: center;"><input type="checkbox"/></td> <td style="text-align: center;"><input type="checkbox"/></td> <td style="text-align: center;"><input type="checkbox"/></td> <td style="text-align: center;"><input type="checkbox"/></td> <td style="text-align: center;"><input type="checkbox"/></td> <td style="text-align: center;"><input type="checkbox"/></td> <td style="text-align: center;"><input type="checkbox"/></td> </tr> <tr> <td>c. Other mechanical power ²²³</td> <td style="text-align: center;"><input type="checkbox"/></td> <td style="text-align: center;"><input type="checkbox"/></td> <td style="text-align: center;"><input type="checkbox"/></td> <td style="text-align: center;"><input type="checkbox"/></td> <td style="text-align: center;"><input type="checkbox"/></td> <td style="text-align: center;"><input type="checkbox"/></td> <td style="text-align: center;"><input type="checkbox"/></td> </tr> <tr> <td>d. Animal power ²²⁴</td> <td style="text-align: center;"><input type="checkbox"/></td> <td style="text-align: center;"><input type="checkbox"/></td> <td style="text-align: center;"><input type="checkbox"/></td> <td style="text-align: center;"><input type="checkbox"/></td> <td style="text-align: center;"><input type="checkbox"/></td> <td style="text-align: center;"><input type="checkbox"/></td> <td style="text-align: center;"><input type="checkbox"/></td> </tr> </tbody> </table>		You (the operator)	You and another person jointly	Your landlord	A private contractor	A government agency	Other not listed	Not used	a. Tractor ²²¹	<input type="checkbox"/>	<input type="checkbox"/>	<input type="checkbox"/>	<input type="checkbox"/>	<input type="checkbox"/>	<input type="checkbox"/>	<input type="checkbox"/>	b. Walking tractor ²²²	<input type="checkbox"/>	<input type="checkbox"/>	<input type="checkbox"/>	<input type="checkbox"/>	<input type="checkbox"/>	<input type="checkbox"/>	<input type="checkbox"/>	c. Other mechanical power ²²³	<input type="checkbox"/>	<input type="checkbox"/>	<input type="checkbox"/>	<input type="checkbox"/>	<input type="checkbox"/>	<input type="checkbox"/>	<input type="checkbox"/>	d. Animal power ²²⁴	<input type="checkbox"/>	<input type="checkbox"/>	<input type="checkbox"/>	<input type="checkbox"/>	<input type="checkbox"/>	<input type="checkbox"/>	<input type="checkbox"/>
	You (the operator)	You and another person jointly	Your landlord	A private contractor	A government agency	Other not listed	Not used																																		
a. Tractor ²²¹	<input type="checkbox"/>	<input type="checkbox"/>	<input type="checkbox"/>	<input type="checkbox"/>	<input type="checkbox"/>	<input type="checkbox"/>	<input type="checkbox"/>																																		
b. Walking tractor ²²²	<input type="checkbox"/>	<input type="checkbox"/>	<input type="checkbox"/>	<input type="checkbox"/>	<input type="checkbox"/>	<input type="checkbox"/>	<input type="checkbox"/>																																		
c. Other mechanical power ²²³	<input type="checkbox"/>	<input type="checkbox"/>	<input type="checkbox"/>	<input type="checkbox"/>	<input type="checkbox"/>	<input type="checkbox"/>	<input type="checkbox"/>																																		
d. Animal power ²²⁴	<input type="checkbox"/>	<input type="checkbox"/>	<input type="checkbox"/>	<input type="checkbox"/>	<input type="checkbox"/>	<input type="checkbox"/>	<input type="checkbox"/>																																		
Section 8 OPERATOR CHARACTERISTICS																																									
The following questions are about the FARM OPERATOR.																																									
1. Do you live on this place?	²³¹ <input type="checkbox"/> Yes <input type="checkbox"/> No																																								
2. In what year did you begin to operate this place?	²³² _____ Year																																								
3. How old were you on your last birthday?	²³³ _____ Years old																																								
4. What is your main occupation?	²³⁴ <input type="checkbox"/> Agricultural <input type="checkbox"/> Non-agricultural																																								
5. How many days did you work off this place in 1974?	²³⁵ <input type="checkbox"/> None <input type="checkbox"/> 100 to 199 days <input type="checkbox"/> 1 to 99 days <input type="checkbox"/> 200 or more days																																								
Section 9 ENUMERATOR'S RECORD (To be filled by the Census enumerator)																																									
1. Who furnished the information in this report? ²⁴¹ <table style="width: 100%; border: none;"> <tr> <td style="width: 50%;"><input type="checkbox"/> Operator</td> <td style="width: 50%;"><input type="checkbox"/> Wife or member of the operator's family</td> </tr> <tr> <td><input type="checkbox"/> Landlord</td> <td></td> </tr> <tr> <td><input type="checkbox"/> Hired laborer</td> <td><input type="checkbox"/> Other – Specify _____</td> </tr> </table>		<input type="checkbox"/> Operator	<input type="checkbox"/> Wife or member of the operator's family	<input type="checkbox"/> Landlord		<input type="checkbox"/> Hired laborer	<input type="checkbox"/> Other – Specify _____																																		
<input type="checkbox"/> Operator	<input type="checkbox"/> Wife or member of the operator's family																																								
<input type="checkbox"/> Landlord																																									
<input type="checkbox"/> Hired laborer	<input type="checkbox"/> Other – Specify _____																																								
2. Remarks (Make any remarks needed in regard to the place, the owner or operator, the crops cultivated, or the livestock on this place.)																																									
<hr/> <hr/> <hr/> <hr/> <hr/> <hr/> <hr/> <hr/> <hr/> <hr/> <hr/> <hr/> <hr/> <hr/> <hr/> <hr/> <hr/> <hr/> <hr/> <hr/> <hr/> <hr/> <hr/> <hr/>																																									
3. Residence of operator	<table style="width: 100%; border: none;"> <tr> <td style="width: 50%; border: none;">a. Election District</td> <td style="width: 50%; border: none;">b. Village</td> </tr> <tr> <td style="border: 1px solid black; height: 20px;"></td> <td style="border: 1px solid black; height: 20px;"></td> </tr> </table>	a. Election District	b. Village																																						
a. Election District	b. Village																																								
4. Location of land	<table style="width: 100%; border: none;"> <tr> <td style="width: 50%; border: none;">a. Election District</td> <td style="width: 50%; border: none;">b. ED Number</td> </tr> <tr> <td style="border: 1px solid black; height: 20px;"></td> <td style="border: 1px solid black; height: 20px;"></td> </tr> </table>	a. Election District	b. ED Number																																						
a. Election District	b. ED Number																																								
5. Certified by	<table style="width: 100%; border: none;"> <tr> <td style="width: 80%; border: none;">Enumerator's signature</td> <td style="width: 20%; border: none;">Date</td> </tr> <tr> <td style="border: 1px solid black; height: 20px;"></td> <td style="border: 1px solid black; height: 20px;"></td> </tr> </table>	Enumerator's signature	Date																																						
Enumerator's signature	Date																																								
6. Checked by	<table style="width: 100%; border: none;"> <tr> <td style="width: 80%; border: none;">Supervisor's signature</td> <td style="width: 20%; border: none;">Date</td> </tr> <tr> <td style="border: 1px solid black; height: 20px;"></td> <td style="border: 1px solid black; height: 20px;"></td> </tr> </table>	Supervisor's signature	Date																																						
Supervisor's signature	Date																																								