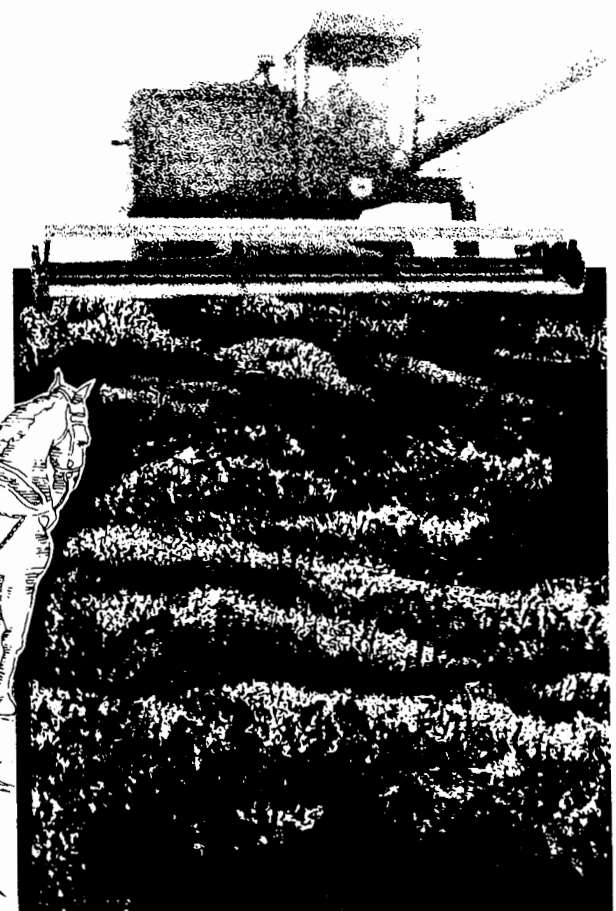
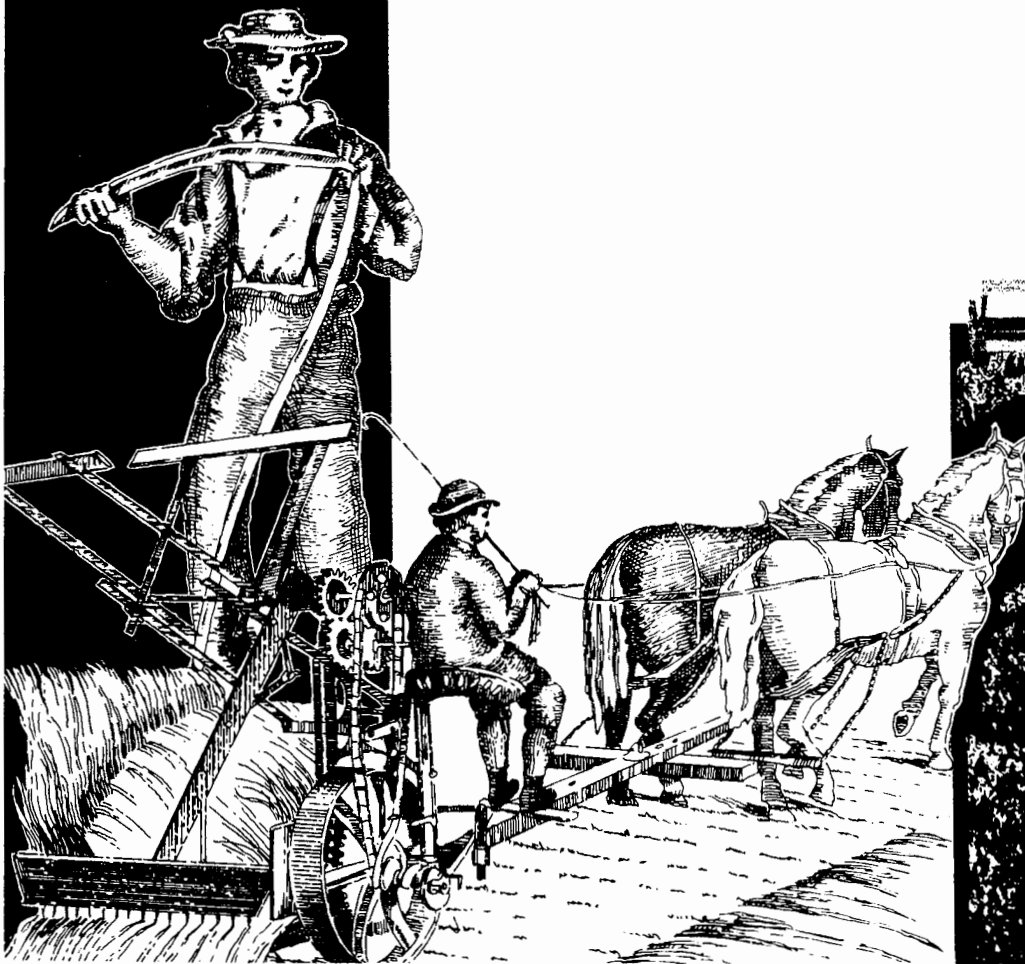


1974 Census of Agriculture

U.S. Department of Commerce
BUREAU OF THE CENSUS

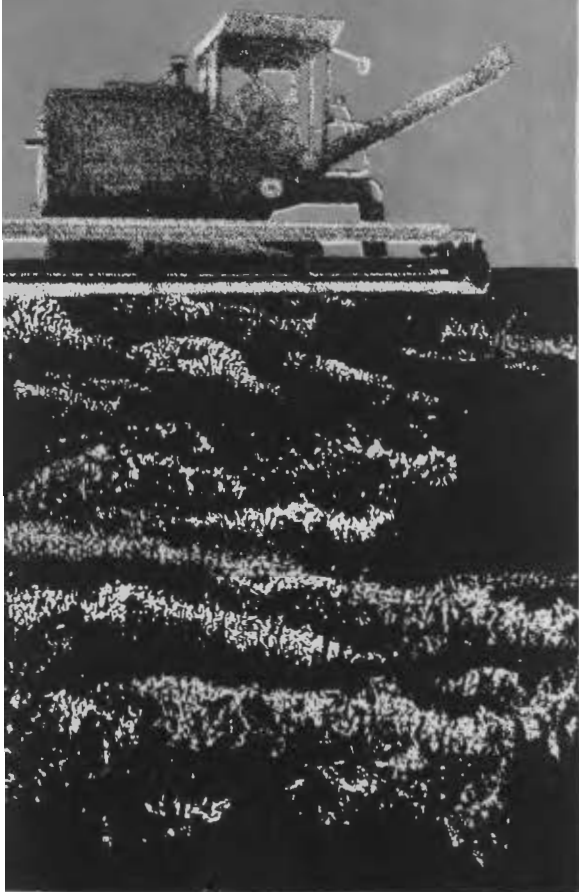
Volume I Parts 53 and 54
**Guam and
Virgin Islands
of the
United States**



1974
Census
of
Agriculture

Volume I Part 53

Guam



Issued March 1977



U.S. Department of Commerce
Juanita M. Kreps, Secretary

BUREAU OF THE CENSUS
Robert L. Hagan, Acting Director

BUREAU OF THE CENSUS

Robert L. Hagan, Acting Director
Shirley Kallek, Associate Director for Economic Fields

AGRICULTURE DIVISION

Orvin L. Wilhite, Chief

ACKNOWLEDGMENTS—Many persons participated in the various activities of the 1974 Census of Agriculture. Primary direction was by Shirley Kallek, Associate Director for Economic Fields. Her predecessor, James W. Turbitt, now Associate Director for Administration and Field Operations, directed the early stages of planning for the census.

This report was prepared in the Agriculture Division under the general supervision of J. Thomas Breen, Chief (to February 1976), and Orvin L. Wilhite, his successor. Kenneth R. Norell, Assistant Chief for Special Surveys, participated in overall planning and supervised the preparation of instructions for office processing and training materials, the development of enumeration procedures, and the technical review of the statistics prior to publication. Hector Vila, Chief, Outlying Areas Statistical Branch, made significant contributions in the overall planning, the preparation of instructions and training materials for the enumeration, and the handling of technical problems associated with office processing. The manual processing of the questionnaires and tables was performed by Alice Brown, Pura Lopez, Lidia Walters, and Lola Grassl. William Perry was responsible for preparing the tables.

The census data were collected at the direction of the Governor of Guam, the Honorable Ricardo J. Bordallo. The actual collection of the data was carried out by census enumerators under the direct responsibility of Joseph T. Flores, Census Project Manager, and two supervisors.

Forms design was accomplished under the general supervision of Cecil B. Matthews, Chief,

Administrative Services Division (to September 1975), and Henry J. Husmann, his successor, assisted by Gladys S. Potts and Cathern S. Kline.

Within the Publications Services Division, many individuals made significant contributions in the areas of publication planning and design, editorial review, composition, and printing procurement.

Special acknowledgment is made to the many farmers and members of their families who furnished the information.

Library of Congress Cataloging in Publication Data

United States. Bureau of the Census.
1974 census of agriculture.

CONTENTS: v. 1. State reports. v.—v. 2. Statistics by subject. v.—v. 3. Agricultural services. v.—v. 4. Special reports. v.

1. Agriculture—Economic aspects—United States—Statistics—Collected works. I. Title. II. Title: Census of agriculture.

HD1753 1974.B87 1977 338.1'0973

76-608387

For sale by Superintendent of Documents, U.S. Government Printing Office, Washington, D.C. 20402, or any U.S. Department of Commerce district office. Postage stamps not acceptable; currency submitted at sender's risk. Remittances from foreign countries must be by international money order or by draft on a U.S. bank. Price \$0.00. S/N 003-024-01365-7

REPORTS OF 1974 CENSUS OF AGRICULTURE

Preliminary Reports. Four pages of data published separately for each county having 10 farms or more, and for each State, the four geographic regions, and the United States. *The statistics printed in these reports are superseded by those in the final reports, Volumes I through IV.*

Volume I. State and County Data. One for each State, Puerto Rico, Guam, and the Virgin Islands, covering the area and its subdivisions. The reports for the States contain data for all farms and farms with sales of \$2,500 and over. Chapter I contains detailed data at the State level classified by size of farm, tenure and age of farm operator, type of organization, value of products sold, and major type of farm; Chapter II, county data summarized by subject; Chapter III, county data by subject for miscellaneous crop and livestock items found in relatively few counties; Chapter IV, county data by county.

Volume II. Statistics by Subject. Chapters containing total data for the United States, geographic regions and divisions, and States, for all farms and farms with sales of \$2,500 and over.

Volume III. Agricultural Services. Data by county for each State covering establishments whose primary activities are providing agricultural services. Data at the U.S., State, and county levels for all establishments are presented for selected four-digit standard industrial classification codes by size and type of organization. Data shown include dollar volume of business, gross receipts from products provided, gross receipts, labor and payroll by type of service performed, capital expenditures, and expenditures for electricity, gasoline, petroleum, and other fuels.

Volume IV. Special Reports.

Part 1. Graphic Summary. Profiles the Nation's agricultural system in a series of U.S. maps, a number of which are printed in color. The characteristics of America's farms in 1974 are illustrated for crops, livestock, and many other characteristics.

Part 2. Ranking Counties and States. Reports on the top ranking 100 counties and 10 States in descending order of importance for 88 selected items for 1974 with comparative data for 1969.

Part 3. Coverage Evaluation. Shows the completeness of the agriculture census for States, geographic divisions, and the United States. Data also show the characteristics of farms missed by value of sales and by selected standard industrial (type-of-farm) classifications. Sampling reliability of the estimate of coverage is shown by value of sales classifications.

Part 4. Procedural History. A comprehensive summary of the procedures used in conducting the 1974 Census of Agriculture in the 50 States, Puerto Rico, Guam, and the Virgin Islands. The history explains the procedures used from early planning and testing through tabulation and publication of the final reports.

CONTENTS

	Page
Map	IV
Introduction.	V

SUMMARY DATA

TABLE 1. Farms and Land in Farms, by Land Use: 1975 and 1970.	1
2. Summary by Size of Farm: 1975 and 1970	1
3. Summary by Tenure of Operator: 1975 and 1970	7
4. Vegetables and Field Crops: 1964 to 1975.	12
5. Fruits and Nuts: 1964 to 1975.	13
6. Livestock, Poultry, and Fish: 1964 to 1975	14
7. Mechanical and Animal Power, by Ownership and Size of Farm: 1975 and 1970	14
8. Mechanical and Animal Power, by Ownership and Tenure of Operator: 1975 and 1970	15
9. Farm Location, Labor Status, Specified Facilities, Type of Holding, and Source of Financing, by Size of Farm: 1975.	16

ELECTION DISTRICT DATA

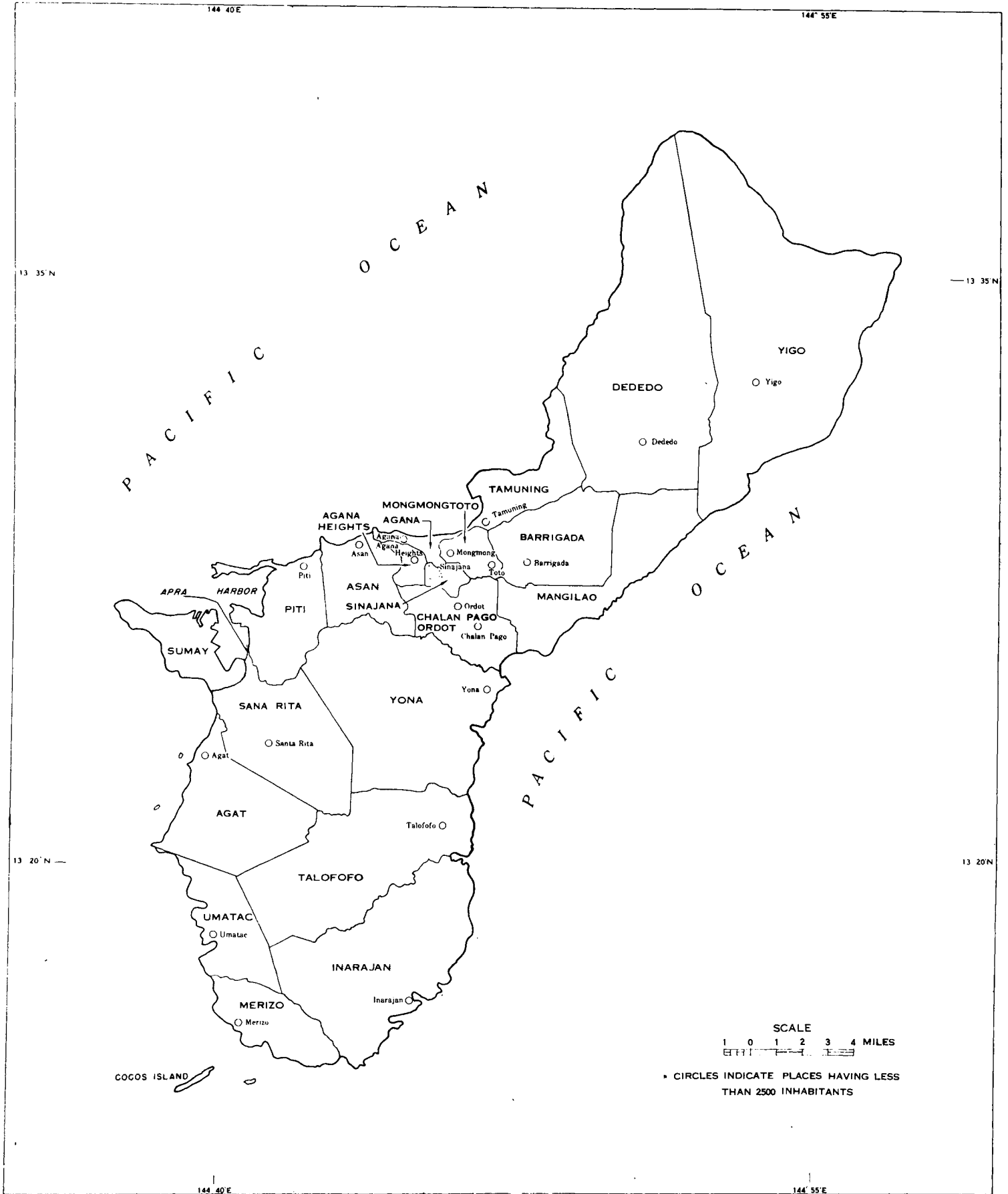
10. Land Area, Farms, and Land in Farms, by Election Districts: 1975 and 1970	17
11. Farms and Land in Farms, by Land Use and by Election Districts: 1975 and 1970	18
12. Farms and Land in Farms, by Size of Farm and by Election Districts: 1975 and 1970	19
13. Farms and Land in Farms, by Tenure of Operator and by Election Districts: 1975 and 1970.	20
14. Farms and Land in Farms, by Ownership and by Election Districts: 1975 and 1970	21
15. Vegetables and Field Crops, by Election Districts: 1975 and 1970	22
16. Fruits and Nuts, by Election Districts: 1975 and 1970	27
17. Livestock and Poultry, by Election Districts: 1975 and 1970.	31
18. Chicken Eggs and Fish, by Election Districts: 1975 and 1970	33
19. Off-Farm Work by Election Districts: 1975 and 1970.	33
20. Operator Characteristics by Election Districts: 1975 and 1970.	34
21. Farms by Source of Financing, by Election Districts: 1975	36
22. Type of Holding by Election Districts: 1975 and 1970	37
23. Farm Labor and Specified Facilities on Farms, by Election Districts: 1975	37

APPENDIXES

A General Explanation	A1
B Report Form	B1

GUAM

Election Districts, Cities and Villages



INTRODUCTION

Authority, Area Covered, and History

The 1974 Census of Agriculture was taken in accordance with the provisions of Title 13, United States Code, reaffirmed by section 818 of the Agriculture and Consumer Protection Act of 1973 (Public Law 93-86). Sections 142(a) and 191 of Title 13 provide for a census of agriculture every 5 years in each State, the District of Columbia, Puerto Rico, Guam, and the Virgin Islands. Section 191 also provides that the census data for Guam may be collected by the Governor or highest ranking Federal official, in accordance with plans prescribed or approved by the Secretary of the U.S. Department of Commerce.

The 1974 census is the eighth census of agriculture of Guam. The first agricultural census for Guam was taken in 1920 as part of the decennial census and continued every 10 years thereafter. In 1964, the first quinquennial (5-year) census was taken in Guam, as authorized by Title 13.

Questionnaire

The questionnaire for the 1974 Census of Agriculture was prepared by the staff of the Census Bureau with the cooperation of the Department of Agriculture of Guam.

To provide more detailed statistics and to aid in processing the data collected, more information was requested for 1974 than for 1970: More crops were treated separately on the 1974 questionnaire, the poultry categories were expanded, and sales data on crops and livestock was included. Inquiries were also added on the distance of farms from a hard-surface road, financial resources

of farm operators, number of days worked by paid and unpaid farm labor, and fisheries.

Definitions and explanations for selected items are given in appendix A. A facsimile of the 1974 questionnaire is shown in appendix B.

Training Program for Enumerators

The supervisors, assistant supervisors, and enumerators employed for the census in Guam received special training for the job, which was prepared by the Census Bureau. The training included classroom practice in interviewing and filling out questionnaires and detailed discussion of the enumerators' instructions.

Enumeration

The statistics in this report represent totals obtained by adding information collected from farm operators during a 7-week period from January 27 to March 14, 1975. For the enumeration, Guam was divided into 20 Enumeration Districts (ED's), clearly outlined on special maps prepared for the census.

Enumerators were given a map and assigned a specific area to enumerate. Except in cities and larger villages, they were required to visit each dwelling (or place) in their area, list the head of its household, and, if it conducted agricultural operations, complete a questionnaire. In urban areas, enumerators were given a list of 1969 farm operations in their assignment and were required to enumerate those that still operated as farms in 1974.

To obtain as complete an enumeration as possible, enumerators were required to plot on their map the location of each

occupied dwelling or place in their ED. They were also given lists of special and large farms located in their area and were required to fill out a questionnaire for each one or explain why one was not necessary.

Enumerators were also instructed to ask enough questions about tracts of land on which no one lived to determine whether agricultural data should be collected from the person in charge of the land. This procedure was designed to assure the enumeration of all land used for agriculture, whether by an individual, a partnership, a corporation, or an institution.

To avoid enumeration of the same place more than once, the Census Bureau established rules whereby enumerators could determine who was responsible for completing a questionnaire for a given place. If a place was entirely within the boundaries of an ED, the enumerator assigned to it completed the questionnaire, regardless of where the person in charge of the operation lived. If a place was partly in one ED and partly in another, the enumerator for the ED in which the person in charge lived was responsible for completing the questionnaire; he reported on all the land that the person in charge operated in Guam, including land outside his ED.

Farm Definition

The statistics presented in this report relate to places qualifying as census farms. For the 1974 Census of Agriculture in Guam, a farm was defined as any place on which any crops or vegetables were harvested or gathered during 1974 or on which there was any livestock

INTRODUCTION Continued

or 15 or more poultry at the time of enumeration.

In comparison, the definition of a farm for the 1970 census was any place on which any crops or vegetables were harvested or gathered during 1969, or on which there was a combined total of 10 or more fruit or nut trees or plants, or on which there was any livestock, or five or more poultry at the time of enumeration.

Office Processing

In the Agriculture Division at the Census Bureau, all questionnaires were individually edited prior to tabulation of the data. In the editing process, questionnaires for places that did not qualify as

census farms were voided. The remaining questionnaires were then examined for accuracy, consistency, and completeness. Errors in calculations and units of measure, inconsistencies, and misplaced entries were corrected; incomplete reports were adjusted on the basis of related information on the same questionnaire or on questionnaires for nearby farms of similar type and size.

After the questionnaires had been edited, the information on them was transferred to tabulation sheets. Subject matter specialists again examined the tabulations for reasonableness and consistency and made necessary corrections on the basis of a further appraisal of the original reports before approving the data for publication.

Tabular Presentation

In the tables presenting the data compiled from the questionnaires completed in Guam, totals are given for each election district and for Guam as a whole. Comparative information for preceding census years is given for those items for which information is available.

Abbreviations and Symbols

The following abbreviations and symbols are used throughout the tables:

- Represents zero.
- D Data withheld to avoid disclosing figures for individual farms or farm operations.
- X Not applicable.
- Z Less than half of the unit reported.
- NA Not available.