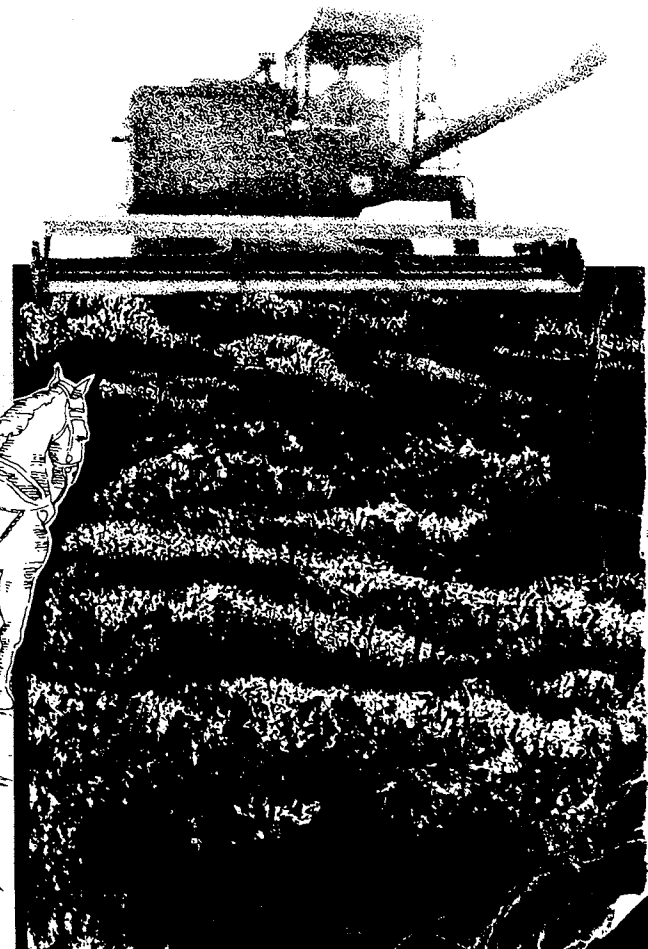
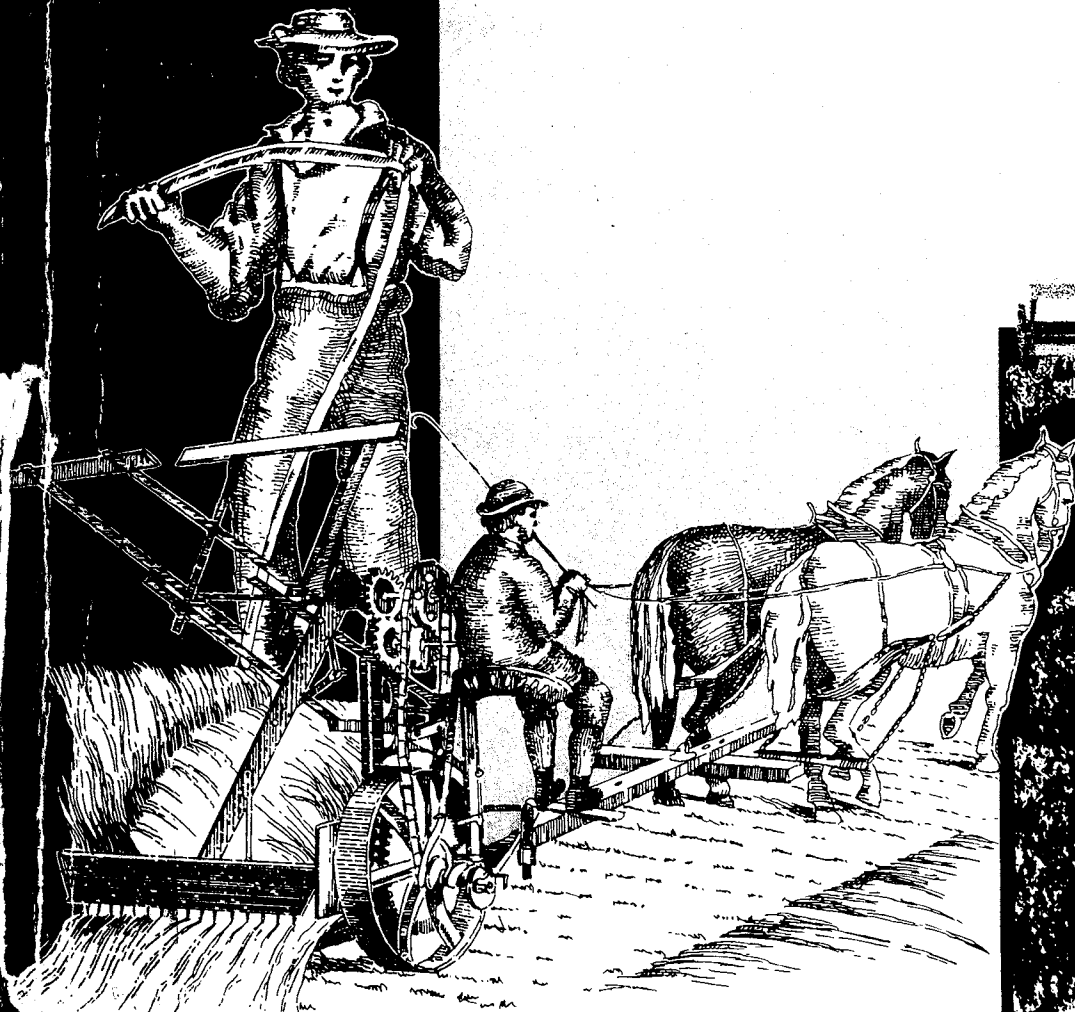


# 1974 Census of Agriculture

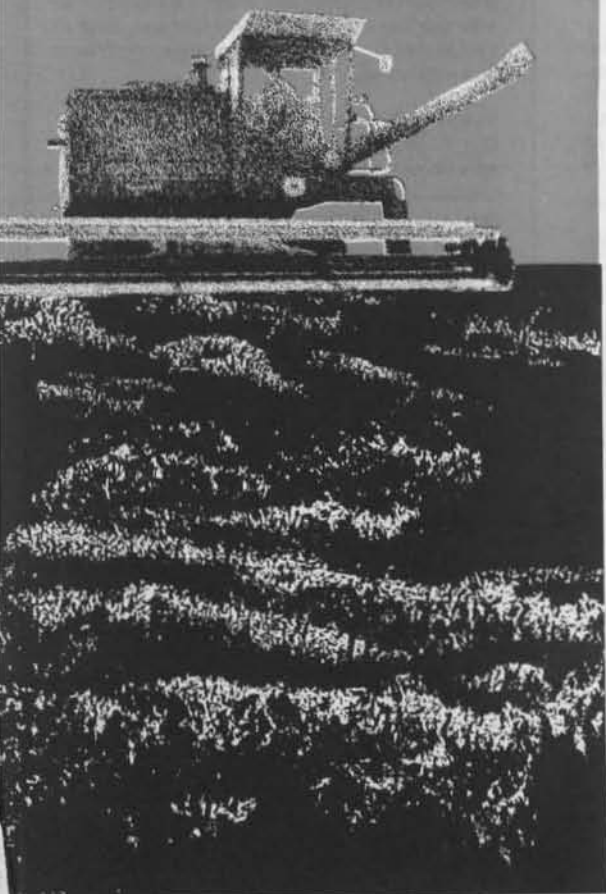
Volume I Part 14  
**Indiana**  
State and  
County Data

U.S. Department of Commerce  
BUREAU OF THE CENSUS



# 1974 Census of Agriculture

## Volume I Part 14 **Indiana** State and County Data



Issued July 1977



U.S. Department of Commerce  
Juanita M. Kreps, Secretary

BUREAU OF THE CENSUS  
Manuel D. Plotkin, Director

## BUREAU OF THE CENSUS

Manuel D. Plotkin, Director

Robert L. Hagan, Deputy Director

Shirley Kallek, Associate Director for Economic Fields

### AGRICULTURE DIVISION

Orvin L. Wilhite, Chief

**ACKNOWLEDGMENTS**—Many persons participated in the various activities of the 1974 Census of Agriculture. Primary direction was by Shirley Kallek, Associate Director for Economic Fields. Her predecessor, James W. Turbitt, now Associate Director for Administration and Field Operations, directed the early stages of planning for the census.

This report was prepared in the Agriculture Division under the general supervision of J. Thomas Breen, Chief (to February 1976), and Orvin L. Wilhite, his successor. Arnold L. Bollenbacher, assisted by Thomas D. Monroe, Donald R. Jahnke, John A. Blackledge, William A. Harlan, and John C. Womack, was directly responsible for review and analysis of the data and for clerical and computer edit and tabulation specifications. Kenneth R. Norell, assisted by Albert W. Graybill, coordinated the organization and content of the publication tables. Robert S. Taylor, assisted by John E. Adkins, Stephen M. Schobel, Loyd C. Brown, Jack H. Margolis, Edward J. James, and William R. Adams, was directly responsible for the operational aspects of data collection, processing, and tabulation, including preparation of control systems, clerical procedures, and computer programs. Janet W. Hall provided editorial services and coded the Linotron table formats of this report for publication via the Linotron computer system. J. Jack Ingram (to September 1974) and Charles E. Rogers, his successor, assisted by Darrell D. Prochaska and Harold V. Edwards, were directly responsible for mailing list acquisition and unduplication, design of sampling procedures for data collection, monitoring of processing, and evaluation of coverage. J. Thomas Miller, Consultant, assisted in the design and content of the data collection forms and followup letters, specifications for publication tables, and preparation of text. O. Bryant Benton, Chief, Data Preparation Division, Jeffersonville, Indiana (to March 1976), and Don L. Adams, his successor, assisted by Robert L. Allen, Rebecca Nesbit, and Darrell L. Farabee, were directly responsible for clerical and data-encoding operations.

The computer processing facilities used were under the general supervision of James R. Pepal, Chief, Computer Services Division (to May 1976), and Thomas C. DiNenna, his successor.

Forms design was accomplished under the general supervision of Cecil B. Matthews, Chief, Administrative Services Division (to September 1975), and Henry J. Husmann, his successor, assisted by Gladys S. Potts and Cathern S. Kline.

Maps were prepared by the Geography Division under the general supervision of Jacob Silver,

Chief, assisted by Frederick R. Broome and Henry Tom.

Within the Publications Services Division, many individuals made significant contributions in the areas of publication planning and design, editorial review, composition, and printing procurement.

Important contributions were made by the members of the Census Advisory Committee on Agriculture Statistics in establishing data needs and priorities for collection and publication of the information. Other representatives of both public and private organizations also made significant recommendations and suggestions.

Members of various agencies of the U.S. Department of Agriculture provided advice and counsel during the planning, data collecting, and processing phases of the census and assisted farmers and ranchers who requested help in completing the report form.

The press, farm magazines, and radio and television stations, were most helpful in publicizing the census and encouraging cooperation of farm and ranch operators. Dean L. Quirin, Agriculture Division, and Dorothy W. Whitson, Public Information Office, were primarily responsible for developing and coordinating the public relations program.

Special tribute is paid to the millions of farm and ranch operators and other agriculture-associated people who furnished the information requested in the census. Only through their cooperation was it possible to collect and publish the data in this report.

#### Library of Congress Cataloging in Publication Data

United States. Bureau of the Census.  
1974 census of agriculture.

CONTENTS: v. 1. State reports. v.—v.2. Statistics by subject. v.—v. 3. Agricultural services. v.—v. 4. Special reports. v.

1. Agriculture—Economic aspects—United States—Statistics—Collected works. I. Title.

II. Title: Census of agriculture.  
HD1753 1974.B87 1977 338.1'0973

76-608387

For sale by Superintendent of Documents, U.S. Government Printing Office, Washington, D.C. 20402, or any U.S. Department of Commerce district office. Postage stamps not acceptable; currency submitted at sender's risk. Remittances from foreign countries must be by international money order or by draft on a U.S. bank. S/N 003-024-01327-4

## REPORTS OF 1974 CENSUS OF AGRICULTURE

**Preliminary Reports.** Four pages of data published separately for each county having 10 farms or more, and for each State, the four geographic regions, and the United States. *The statistics printed in these reports are superseded by those in the final reports, Volumes I through IV.*

**Volume I. State and County Data.** One for each State, Puerto Rico, Guam, and the Virgin Islands, covering the area and its subdivisions. The reports for the States contain data for all farms and farms with sales of \$2,500 and over. *Chapter I* contains detailed data at the State level classified by size of farm, tenure and age of farm operator, type of organization, value of products sold, and major type of farm; *Chapter II*, county data summarized by subject; *Chapter III*, county data by subject for miscellaneous crop and livestock items found in relatively few counties; *Chapter IV*, county data by county.

**Volume II. Statistics by Subject.** Chapters containing total data for the United States, geographic regions and divisions, and States, for all farms and farms with sales of \$2,500 and over.

**Volume III. Agricultural Services.** Data by county for each State covering establishments whose primary activities are providing agricultural services. Data at the U.S., State, and county levels for all establishments are presented for selected four-digit standard industrial classification codes by size and type of organization. Data shown include dollar volume of business, gross receipts from products provided, gross receipts, labor and payroll by type of service performed, capital expenditures, and expenditures for electricity, gasoline, petroleum, and other fuels.

#### Volume IV. Special Reports.

**Part 1. Graphic Summary.** Profiles the Nation's agricultural system in a series of U.S. maps, a number of which are printed in color. The characteristics of America's farms in 1974 are illustrated for crops, livestock, and many other characteristics.

**Part 2. Ranking Counties and States.** Reports on the top ranking 100 counties and 10 States in descending order of importance for 88 selected items for 1974 with comparative data for 1969.

**Part 3. Coverage Evaluation.** Shows the completeness of the agriculture census for States, geographic divisions, and the United States. Data also show the characteristics of farms missed by value of sales and by selected standard industrial (type-of-farm) classifications. Sampling reliability of the estimate of coverage is shown by value of sales classifications.

**Part 4. Procedural History.** A comprehensive summary of the procedures used in conducting the 1974 Census of Agriculture in the 50 States, Puerto Rico, Guam, and the Virgin Islands. The history explains the procedures used from early planning and testing through tabulation and publication of the final reports.

# CONTENTS

	Page
Introduction . . . . .	IX
Table—Farms and Value of Products Sold by 1974 and 1959 Definitions, With Comparable Data for Agricultural Operations Excluded by 1974 Definition: 1974 and 1969 . . . . .	XII
Highlights of the State's Agriculture: 1974 and 1969 . . . . .	XIII
Chart 1—Changes in the State's Agriculture: 1974 from 1969 . . . . .	XIV
Chart 2—Profile of the State's Agriculture: 1974 . . . . .	XVI
Map—Number of Farms: 1974 . . . . .	XVIII
Map—Land in Farms: 1974 . . . . .	XVIII
Map—Value of Crops Sold: 1974 . . . . .	XVIII
Map—Value of Livestock, Poultry, and Their Products Sold: 1974 . . . . .	XVIII
Map—Cattle and Calves: 1974 . . . . .	XIX
Map—Corn Harvested for All Purposes: 1974 . . . . .	XIX
Map—Soybeans Harvested for Beans: 1974 . . . . .	XIX
Map—Hogs and Pigs: 1974 . . . . .	XIX
State Map . . . . .	XX

## CHAPTER I. State Data

### All Farms

TABLE 1. Farms, Land in Farms, and Land Use: 1940 to 1974 . . . . .	I-1
2. Farms, Land in Farms, and Land Use, by Size of Farm: 1974, 1969, and 1964 . . . . .	I-1
3. Farm Operators—Tenure and Characteristics: 1974, 1969, and 1964 . . . . .	I-2
4. Farm Income and Sales: 1974, 1969, and 1964 . . . . .	I-2
5. Farm Production Expenses: 1974, 1969, and 1964 . . . . .	I-3
6. Selected Machinery and Equipment on Place: 1974, 1969, and 1964 . . . . .	I-4
7. Livestock and Poultry—Inventory and Sales: 1974, 1969, and 1964 . . . . .	I-4
8. Crops Harvested and Value of Production: 1974, 1969, and 1964 . . . . .	I-5
9. Summary by Occupation and Age: 1974 . . . . .	I-5

### Farms With Sales of \$2,500 and Over

TABLE 10. Farms, Land in Farms, and Land Use: 1974, 1969, and 1964 . . . . .	I-11
11. Farms, Land in Farms, and Land Use, by Size of Farm: 1974, 1969, and 1964 . . . . .	I-11
12. Irrigation, Artificial Drainage, and Artificial Ponds: 1974 and 1969 . . . . .	I-12
13. Agricultural Chemicals Used: 1974 and 1969 . . . . .	I-12

## CONTENTS Continued

<b>Farms With Sales of \$2,500 and Over Continued</b>		<b>Page</b>
TABLE 14.	Farm Operators—Tenure and Characteristics: 1974, 1969, and 1964 . . . . .	I-13
15.	Value of Agricultural Products Sold: 1974 and 1969 . . . . .	I-13
16.	Income From Sources Other Than Sale of Agricultural Products: 1974 and 1969 . . . . .	I-14
17.	Farm Production Expenses: 1974, 1969, and 1964 . . . . .	I-14
18.	Farm Payroll and Employment: 1974, 1969, and 1964 . . . . .	I-16
19.	Machinery and Equipment on Place: 1974, 1969, and 1964 . . . . .	I-16
20.	Poultry—Inventory and Sales: 1974 and 1969 . . . . .	I-17
21.	Cattle and Calves—Inventory and Sales: 1974 and 1969 . . . . .	I-18
22.	Hogs and Pigs—Inventory and Sales: 1974 and 1969 . . . . .	I-20
23.	Sheep and Lambs—Inventory and Sales: 1974 and 1969 . . . . .	I-21
24.	Other Livestock and Livestock Products—Inventory and Sales: 1974 and 1969 . . . . .	I-21
25.	Selected Crops Harvested: 1974, 1969, and 1964 . . . . .	I-22
26.	Value of Agricultural Products Sold by Commodity Group and Total Value of Sales: 1974 . . . . .	I-25
27.	Contracts: 1974 . . . . .	I-26
28.	Summary by Tenure of Farm Operator and Type of Organization: 1974 . . . . .	I-28
29.	Summary by Age and Principal Occupation of Farm Operator: 1974 . . . . .	I-36
30.	Summary by Size of Farm: 1974 . . . . .	I-52
31.	Summary by Value of Agricultural Products Sold: 1974 . . . . .	I-68
32.	Summary by Standard Industrial Classification of Farms: 1974 . . . . .	I-76
33.	Summary by Standard Industrial Classification of Farms by Value of Sales: 1974	
	Cash grain farms . . . . .	I-92
	Cotton farms . . . . .	(Not shown)
	Tobacco farms . . . . .	(Not shown)
	Sugar crop, Irish potato, hay, peanut, and other field crop farms . . . . .	(Not shown)
	Vegetable and melon farms . . . . .	(Not shown)
	Fruit and tree nut farms . . . . .	(Not shown)
	Horticultural specialty farms . . . . .	(Not shown)
	General farms, primarily crop . . . . .	I-100
	Livestock farms, except dairy, poultry, and animal specialty . . . . .	I-108
	Dairy farms . . . . .	I-116
	Poultry and egg farms . . . . .	I-124
	Animal specialty farms . . . . .	(Not shown)
	General farms, primarily livestock . . . . .	I-132
	Farms not classified by SIC . . . . .	(Not shown)

## CHAPTER II. County Summary Data

TABLE 1.	Number, Land, and Value of Farms: 1974 and 1969 . . . . .	II-1
2.	Land Use: 1974 . . . . .	II-3
3.	Irrigation: 1974 . . . . .	II-5
4.	Tenure of Farm Operators and Type of Organization of Farms: 1974 . . . . .	II-6
5.	Characteristics of All Farm Operators: 1974 . . . . .	II-7

**CONTENTS Continued**

<b>CHAPTER II Continued</b>		<b>Page</b>
<b>TABLE 6.</b>	<b>Farms by Standard Industrial Classification for Farms With Sales of \$2,500 and Over: 1974</b> . . . . .	II-8
	7. <b>Farms by Value of Agricultural Products Sold: 1974</b> . . . . .	II-10
	8. <b>Market Value of Agricultural Products Sold: 1974</b> . . . . .	II-11
	9. <b>Farm Production Expenses: 1974</b> . . . . .	II-13
	10. <b>Farm Production Expenses by Item Purchased: 1974</b> . . . . .	II-14
	11. <b>Machinery and Equipment: 1974</b> . . . . .	II-18
	12. <b>Cattle and Calves—Inventory and Sales: 1974</b> . . . . .	II-19
	13. <b>Hogs and Pigs—Inventory and Sales: 1974</b> . . . . .	II-23
	14. <b>Sheep and Lambs—Inventory and Sales: 1974</b> . . . . .	II-25
	15. <b>Poultry—Inventory and Sales: 1974</b> . . . . .	II-27
	16. <b>Horses and Ponies—Inventory and Sales: 1974</b> . . . . .	II-32
	17. <b>Field Corn for All Purposes: 1974</b> . . . . .	II-33
	18. <b>Field Corn for Grain: 1974</b> . . . . .	II-34
	19. <b>Sorghums for All Purposes, Except Sirup: 1974</b> . . . . .	II-35
	20. <b>Sorghums for Grain: 1974</b> . . . . .	II-36
	21. <b>Wheat for Grain: 1974</b> . . . . .	II-37
	22. <b>Soybeans: 1974</b> . . . . .	II-38
	23. <b>Hay, Excluding Sorghum Hay: 1974</b> . . . . .	II-39
	24. <b>Peanuts for Nuts: 1974</b> . . . . .	II-40
	25. <b>Cotton: 1974</b> . . . . .	II-41
	26. <b>Tobacco: 1974</b> . . . . .	II-42
	27. <b>Irish Potatoes: 1974</b> . . . . .	II-43
	28. <b>Vegetables, Sweet Corn, or Melons: 1974</b> . . . . .	II-44
	29. <b>Berries: 1974</b> . . . . .	II-45
	30. <b>Land in Orchards: 1974</b> . . . . .	II-46
	31. <b>Farm Operator Debt for Farms With Sales of \$2,500 and Over: 1974</b> . . . . .	II-47
	32. <b>Grain Storage Capacity for Farms With Sales of \$2,500 and Over: 1974</b> . . . . .	II-48
	33. <b>Characteristics of Farms and Specified Excluded Agricultural Operations: 1974.</b> . . . . .	II-49

**CHAPTER III. County Miscellaneous Data**

<b>TABLE 1.</b>	<b>Miscellaneous Poultry: 1974</b> . . . . .	III-1
	2. <b>Miscellaneous Livestock and Animal Specialties: 1974</b> . . . . .	III-2
	3. <b>Mink: 1974</b> . . . . .	III-3
	4. <b>Colonies of Bees: 1974</b> . . . . .	III-4
	5. <b>Angora Goats: 1974</b> . . . . . (Not shown)	
	6. <b>Milk Goats: 1974</b> . . . . .	III-4
	7. <b>Fish: 1974</b> . . . . . (Not shown)	
	8. <b>Hay, Field Seeds, Other Specified Field Crops, and Berries: 1974</b> . . . . .	III-4
	9. <b>Grains, Dry Beans and Peas, Sweetpotatoes, and Sugar Crops: 1974</b> . . . . .	III-11
	10. <b>Vegetables Harvested for Sale: 1974</b> . . . . .	III-13
	11. <b>Fruits and Nuts: 1974</b> . . . . .	III-16
	12. <b>Forest Products—Sales: 1974</b> . . . . .	III-18
	13. <b>Nursery and Greenhouse Products: 1974</b> . . . . .	III-18
	14. <b>Farm Operators by Selected Racial and Ethnic Group: 1974</b> . . . . .	III-19

**CHAPTER IV. County Data** (The following tables are common to each county)

	Page
TABLE 1. Farms, Land in Farms, and Land Use: 1974 and 1969 . . . . .	IV-1
2. Farm Operators—Tenure and Characteristics: 1974 and 1969 . . . . .	IV-1
3. Market Value of Agricultural Products Sold: 1974 and 1969 . . . . .	IV-2
4. Income From Sources Other Than Sale of Agricultural Products: 1974 and 1969 . . . . .	IV-2
5. Farm Production Expenses: 1974 and 1969 . . . . .	IV-2
6. Machinery and Equipment on Place: 1974 and 1969 . . . . .	IV-3
7. Cattle and Calves—Inventory and Sales: 1974 and 1969 . . . . .	IV-3
8. Hogs, Sheep, Goats, and Horses—Inventory and Sales: 1974 and 1969 . . . . .	IV-4
9. Poultry—Inventory and Sales: 1974 and 1969 . . . . .	IV-4
10. Crops: 1974 and 1969 . . . . .	IV-5
11. Irrigation and Commercial Fertilizer on Pastureland and Harvested Crops for Farms With Sales of \$2,500 and Over: 1974 and 1969 . . . . .	IV-5
12. Agricultural Chemicals Used and Cost of Materials for Farms With Sales of \$2,500 and Over: 1974 and 1969 . . . . .	IV-6
13. Irrigation, Artificial Drainage, and Artificial Ponds for Farms With Sales of \$2,500 and Over: 1974 and 1969 . . . . .	IV-6
14. Farm Credit for Farms With Sales of \$2,500 and Over: 1974 . . . . .	IV-6
15. Payroll and Employment for Farms With Sales of \$2,500 and Over: 1974 and 1969 . . . . .	IV-6
Indiana . . . . .	IV-1
Adams. . . . .	IV-7
Allen. . . . .	IV-13
Bartholomew . . . . .	IV-19
Benton . . . . .	IV-25
Blackford. . . . .	IV-31
Boone . . . . .	IV-37
Brown. . . . .	IV-43
Carroll. . . . .	IV-49
Cass . . . . .	IV-55
Clark. . . . .	IV-61
Clay . . . . .	IV-67
Clinton . . . . .	IV-73
Crawford . . . . .	IV-79
Daviess . . . . .	IV-85
Dearborn. . . . .	IV-91
Decatur . . . . .	IV-97
De Kalb. . . . .	IV-103
Delaware . . . . .	IV-109
Dubois . . . . .	IV-115
Elkhart . . . . .	IV-121
Fayette . . . . .	IV-127
Floyd . . . . .	IV-133
Fountain . . . . .	IV-139
Franklin . . . . .	IV-145
Fulton. . . . .	IV-151
Gibson . . . . .	IV-157
Grant . . . . .	IV-163
Greene . . . . .	IV-169
Hamilton. . . . .	IV-175
Hancock . . . . .	IV-181
Harrison . . . . .	IV-187
Hendricks . . . . .	IV-193
Henry . . . . .	IV-199
Howard . . . . .	IV-205
Huntington . . . . .	IV-211
Jackson . . . . .	IV-217
Jasper . . . . .	IV-223
Jay . . . . .	IV-229
Jefferson . . . . .	IV-235
Jennings . . . . .	IV-241
Johnson. . . . .	IV-247
Knox . . . . .	IV-253
Kosciusko . . . . .	IV-259
Lagrange . . . . .	IV-265
Lake . . . . .	IV-271
La Porte . . . . .	IV-277
Lawrence. . . . .	IV-283
Madison. . . . .	IV-289
Marion . . . . .	IV-295

---

## CONTENTS Continued

CHAPTER IV Continued		Page
Marshall . . . . .	IV-301	Scott . . . . . IV-433
Martin . . . . .	IV-307	Shelby . . . . . IV-439
Miami . . . . .	IV-313	Spencer . . . . . IV-445
Monroe . . . . .	IV-319	Starke . . . . . IV-451
Montgomery . . . . .	IV-325	Steuben . . . . . IV-457
Morgan . . . . .	IV-331	Sullivan . . . . . IV-463
Newton . . . . .	IV-337	Switzerland . . . . . IV-469
Noble . . . . .	IV-343	Tippecanoe . . . . . IV-475
Ohio . . . . .	IV-349	Tipton . . . . . IV-481
Orange . . . . .	IV-355	Union . . . . . IV-487
Owen . . . . .	IV-361	Vanderburgh . . . . . IV-493
Parke . . . . .	IV-367	Vermillion . . . . . IV-499
Perry . . . . .	IV-373	Vigo . . . . . IV-505
Pike . . . . .	IV-379	Wabash . . . . . IV-511
Porter . . . . .	IV-385	Warren . . . . . IV-517
Posey . . . . .	IV-391	Warrick . . . . . IV-523
Pulaski . . . . .	IV-397	Washington . . . . . IV-529
Putnam . . . . .	IV-403	Wayne . . . . . IV-535
Randolph . . . . .	IV-409	Wells . . . . . IV-541
Ripley . . . . .	IV-415	White . . . . . IV-547
Rush . . . . .	IV-421	Whitley . . . . . IV-553
St. Joseph . . . . .	IV-427	

## APPENDIXES

A. General Explanation . . . . .	A-1
Taking the Census . . . . .	A-1
Enumeration Method . . . . .	A-1
Mailing List . . . . .	A-1
Report Forms . . . . .	A-1
Initial Mailing . . . . .	A-2
Followup Procedures . . . . .	A-2
Major Changes in Data Collected . . . . .	A-2
Office Processing . . . . .	A-3
1969 Data Corrections . . . . .	A-3
Definitions and Explanations . . . . .	A-3
Farm Classifications . . . . .	A-9
Unpublished Data . . . . .	A-11
Nonsampling Errors . . . . .	A-11
Census Coverage . . . . .	A-12
Statistical Adjustments . . . . .	A-12
Nonresponse . . . . .	A-12
Sampling . . . . .	A-12
Reliability of Adjustment for Nonresponse and Sampling . . . . .	A-12
B. Characteristics of Agricultural Operations Qualifying as Farms by the 1959 Definition but Excluded by the 1974 Definition: 1974 and 1969 . . . . .	B-1
C. Report Forms	
Regular Report Form . . . . .	C-1
Short Report Form . . . . .	C-23

INDEX . . . . .	Index-1
-----------------	---------



---

# INTRODUCTION

## Authority, Area Covered, and History

The 1974 Census of Agriculture was taken in accordance with the provisions of Title 13, United States Code, reaffirmed by section 818 of the Agriculture and Consumer Protection Act of 1973 (Public Law 93-86). Sections 142(a) and 191 of Title 13 provide for a census of agriculture every 5 years in each State, the District of Columbia, Puerto Rico, Guam, and the Virgin Islands.

The 1974 census is the 20th nationwide census of agriculture and the second conducted primarily by mail. The first agricultural census data were collected in 1840 as part of the sixth decennial census. Since that time, a census of agriculture has been a part of each decennial census program, and since 1920 a national census of agriculture has been taken every 5 years.

## Farm Definition

For each of the 20 censuses of agriculture except the first, taken in 1840, the agency responsible for conducting the census has established minimum criteria which define a farm for the purpose of the census. As the Nation has developed and grown, agriculture also has changed and grown, and from time to time the minimum criteria for the definition of a farm have been changed.

Prior to 1974, the eighth and most recent change in minimum criteria was for the 1959 Census of Agriculture, when the definition of a farm was based primarily on a combination of acres in the place and value of agricultural products sold.

The word "place" was defined to include all land on which agricultural operations were conducted at any time in the census year under the day-to-day control or supervision of one person or partnership. Control may have been exercised through ownership or management or through a lease, rental, or cropping arrangement.

Places of less than 10 acres in the census year were counted as farms if the estimated sales of agricultural products for the year amounted to at least \$250. Places of 10 or more acres in the census year were counted as farms if the estimated sales of agricultural products for the year amounted to at least \$50. Places having less than the \$50 or \$250 minimum estimated sales in the census year were also counted as farms if they could normally be expected to produce agricultural products in sufficient quantity to meet the requirements of the definition.

Using the 1959 definition, the 1969 census reported about 571,000 farms in the United States having sales of less than \$1,000; these farms comprised 20.9 percent of all farms but contributed less than 1 percent of total sales. In 1974 there were only about 152,000 such farms, accounting for less than 6 hundredths of 1 percent of total sales. Between censuses many of these small farms had ceased operations, while many others had sales of \$1,000 or more in the census year, either because of increased agricultural activity or because of increases in the per unit value of agricultural products sold.

In view of increases in price levels and other changes in the structure of agricultural operations, various individuals

and organizations, including members of the Census Advisory Committee on Agriculture Statistics, the Office of Management and Budget, and the U.S. Department of Agriculture, agreed that a change in the definition of a farm was justified. The Department of Commerce announced on August 12, 1975, that the census definition of a farm, for purposes of publishing the 1974 census data, was any establishment which during the census year had or normally would have had sales of agricultural products of \$1,000 or more.

In the next 10 months, Congress held four hearings on the appropriateness of changing the definition. During this time, Public Law 94-229, enacted March 15, 1976, included a provision requiring the statistical classification of farms in effect on January 1, 1975, to be continued in effect through June 30, 1976, and that any statistical report issued on or before June 30, 1976, should reflect such classification, but could also include additional classifications as deemed appropriate by the Secretary of Commerce.

**Definition for preliminary reports.** Publication of the preliminary county reports began in April 1976, and these reports for all counties and States, the four regions, and the United States were tabulated and published in accordance with the same farm definition used for the 1959, 1964, and 1969 censuses.

**Definition for final reports.** For all final reports, the 1974 statistics are in accordance with the 1974 definition, which differs from the earlier definition in only two respects:

## INTRODUCTION Continued

1. The criterion for number of "acres in place" has been deleted.
2. The criterion for minimum value of agricultural products sold has been changed to \$1,000.

Thus for 1974, a farm was defined to include all land on which agricultural operations were conducted at any time in the census year under the day-to-day control of an individual management, and from which \$1,000 or more of agricultural products were sold during the census year. Control may have been exercised through ownership or management, or through a lease, rental, or cropping arrangement. Places having less than the minimum \$1,000 sales in the census year were also counted as farms if they could normally be expected to produce agricultural products in sufficient quantity to meet the requirements of the definition.

Three tables in this report provide users with measures of the effect of the change in definition: The table following this introduction shows farms and sales, by county, for 1974 and 1969, for both the old and the new definitions, and also for those places excluded by the 1974 but not by the 1959 definition. In chapter II, table 33 presents data by county for 1974 showing comparisons between farms (1974 definition) and agricultural operations that would have been farms under the 1959 definition. The table that comprises appendix B presents data by State for 1974 and 1969 showing characteristics of 1974 agricultural operations excluded by the new definition and of 1969 farms having less than \$1,000 total value of sales.

The 1974 "all farms" data shown in State tables 1 through 9 and county tables 1 through 10 are for those agricultural operations with at least \$1,000 in total (or potential) sales of farm products. All other tables in this report are limited to farms with sales of \$2,500 or more (see the paragraphs in appendix A that describe the report forms and the enumeration method).

### Comparability of Data

In general, data for 1974 and earlier

censuses are comparable with data from earlier censuses only for farms with \$2,500 or more total value of sales, because the data for farms with \$2,500 or more value of sales are not affected by the change in farm definition. Data for all farms for 1974 are based on the new definition so they are not directly comparable to earlier censuses. It is also important to note that in addition to the difference in farm definition used in this report from that in the preliminary version, this final report contains 1974 figures which will not agree with figures in the preliminary reports because of corrections, additions, and deletions.

Even for farms with \$2,500 or more value of sales, the difference in timing and the change from personal interview to mail enumeration affect the comparability between the data for 1974 and 1969 and that for earlier censuses. Both 1974 and 1969 censuses were taken by mail; all earlier censuses were taken by direct interview.

Dramatic changes in rates of farm expenditure and unit prices of products sold between the 1969 and 1974 censuses affect the comparability of some census data. During the period between the two censuses, prices paid by farmers greatly increased. Prices received by farmers also increased but with wide fluctuations among commodities at different times during the census year of 1974.

Crop and livestock production data are for the calendar year 1974, except for a few crops (such as citrus) for which the production year overlaps the calendar year. Expenditures, crops irrigated, usage of agricultural chemicals and fertilizers, and sale of farm products were all asked for the calendar year. Respondents were instructed to report inventory numbers of livestock, poultry, and other specified items as of December 31, 1974. The reporting period and inventory data are the same as for the 1969 census.

Censuses prior to 1969 were taken by enumerators, each assigned to a specific geographic area. Field work for the 1964 and 1959 censuses was completed largely in October, November, and December of the reference year. Livestock and poultry inventories for those two censuses were as

of the time of enumeration. Other variations in time of enumeration occurred in censuses prior to 1959.

### Graphics

On the following pages, there is a graphic presentation of selected agricultural statistics for this State. The first four dot maps are being published for all States. The second four dot maps have been selected to present data of particular importance to this State.

### Tabular Presentation

**State data**—In chapter I, State tables 1 through 27 show detailed State level data generally accompanied by historical data for one or more censuses. Tables 28 through 33 provide 1974 State data cross-tabulated by various farm classifications.

**County summary data**—A summary of selected data items for each county of the State is presented in chapter II of this publication. In these tables the counties are listed in alphabetical order with the State total at the beginning of each table.

**County miscellaneous data**—In chapter III, data for additional crop and livestock items not common to a large number of counties are reported in a separate set of tables by county for each State. Some of these items, even though reported in only a few counties of the State, are sufficiently important to account for a significant proportion of the agricultural production.

Counties not having the subject item of a given table, or with only a very limited number of farms reporting the item, are not listed separately; their data are combined with other counties and presented as "All other."

**Final county data**—Six pages of data are presented in chapter IV for each county with 10 farms or more in 1974. The tables include final data for each county and are more comprehensive than those in the preliminary reports. Data are for the year 1974 with inventory (on place)

## INTRODUCTION Continued

figures as of December 31, 1974. Information covering all farms and farms with sales of \$2,500 and over are presented for both the 1974 and 1969 censuses. A State level six-page report like the county report is published at the beginning of the chapter.

**Preliminary county data**—Preliminary reports have been published separately for all counties in the United States with 10 farms or more in 1974. This four-page series provided, at the earliest possible date, usable information on a limited number of major data items, with comparative final figures from the 1969 census.

The reports were issued on a flow basis, with a State report following the release of the last county report for each State. Tables showing regional and U.S. totals were also prepared as a part of this series.

For all States, the same table format was used to present the data except data for six selected crops shown in table 7. These crops were varied by State depending upon their relative importance.

For major items at the county level differences between the preliminary and final figures are in general less than 5 percent. At the State level, differences are significantly less.

## "See Text" Reference

The remark "See text" in the tables refers to explanations, definitions, and classifications in sections 5 and 6 of appendix A.

## Abbreviations and Symbols

The following abbreviations and symbols are used throughout the tables:

- Represents zero.
- D Data withheld to avoid disclosing information for individual farms.
- X Not applicable.
- Z Less than half of the unit reported.
- NA Not available.

FARMS AND VALUE OF PRODUCTS SOLD BY 1974 AND 1959 DEFINITIONS, WITH COMPARABLE DATA FOR AGRICULTURAL OPERATIONS EXCLUDED BY 1974 DEFINITION: 1974 AND 1969

COUNTY	BY 1974 DEFINITION				BY 1959 DEFINITION				AGRICULTURAL OPERATIONS EXCLUDED BY 1974 DEFINITION BUT NOT BY 1959 DEFINITION			
	NUMBER		VALUE OF AGRICULTURAL PRODUCTS SOLD (\$1,000)		NUMBER		VALUE OF AGRICULTURAL PRODUCTS SOLD (\$1,000)		NUMBER		VALUE OF AGRICULTURAL PRODUCTS SOLD (\$1,000)	
	1974	1969	1974	1969	1974	1969	1974	1969	1974	1969	1974	1969
INDIANA, TOTAL . . . . .	87 915	83 835	2 612 631	1 392 384	92 961	101 479	2 614 029	1 400 146	5 046	17 644	1 398	7 762
ADAMS . . . . .	1 361	1 355	42 198	21 286	1 413	1 514	42 216	21 365	52	159	18	79
ALLEN . . . . .	1 878	1 916	50 564	23 633	1 998	2 310	50 598	23 813	120	394	34	180
BARTHOLOMEW . . . . .	886	844	27 786	14 751	942	1 027	27 796	14 832	56	183	11	80
BENTON . . . . .	707	810	49 105	21 630	718	833	49 110	21 636	11	23	5	7
BLACKFORD . . . . .	516	520	11 696	5 951	549	632	11 703	6 000	33	112	8	49
BOONE . . . . .	1 108	1 252	36 701	22 229	1 182	1 448	36 724	22 327	74	196	23	98
BROWN . . . . .	188	131	1 232	653	225	251	1 243	697	37	120	11	44
CARROLL . . . . .	1 015	987	60 935	26 815	1 055	1 098	60 949	26 862	40	111	14	48
CASS . . . . .	1 124	1 109	39 714	20 705	1 185	1 272	39 730	20 776	61	163	16	71
CLARK . . . . .	928	813	13 012	7 392	1 004	1 043	13 033	7 499	76	230	20	107
CLAY . . . . .	835	789	20 430	11 289	876	963	20 445	11 374	41	174	15	85
CLINTON . . . . .	990	1 074	41 144	24 254	1 025	1 207	41 154	24 316	35	133	10	62
CRAWFORD . . . . .	569	355	5 001	3 020	608	543	5 008	3 087	39	188	7	67
DAVISS . . . . .	1 333	1 194	44 602	21 300	1 387	1 375	44 617	21 383	54	181	15	83
DE KALB . . . . .	1 240	992	21 353	10 239	1 280	1 313	21 369	10 395	40	321	16	156
DEARBORN . . . . .	891	730	6 303	4 352	966	1 069	6 318	4 515	75	339	16	163
DECATUR . . . . .	1 043	1 050	22 826	22 826	1 079	1 193	42 728	22 893	36	143	9	67
DELAWARE . . . . .	1 059	1 107	31 628	17 279	1 158	1 372	31 663	17 396	99	265	35	118
DUBOIS . . . . .	1 128	1 047	48 844	27 758	1 152	1 180	48 852	27 823	24	133	8	64
ELKHART . . . . .	1 626	1 569	45 187	28 951	1 743	1 926	45 231	29 098	117	357	44	146
FAYETTE . . . . .	578	520	15 922	8 766	605	598	15 930	8 797	27	78	7	31
FLOYD . . . . .	483	328	4 037	2 692	562	520	4 060	2 779	79	192	23	86
FOUNTAIN . . . . .	754	798	29 077	15 104	791	931	29 087	15 161	37	133	9	57
FRANKLIN . . . . .	1 080	961	18 519	11 117	1 111	1 153	18 531	11 214	31	192	13	97
FULTON . . . . .	1 048	1 057	28 682	15 507	1 104	1 235	28 696	15 582	56	178	14	75
GIBSON . . . . .	957	1 080	41 580	21 486	988	1 219	41 588	21 544	31	139	8	58
GRANT . . . . .	1 102	1 038	39 091	19 550	1 149	1 262	39 105	19 649	47	224	14	99
GREENE . . . . .	1 100	943	19 105	11 717	1 184	1 221	19 127	11 831	84	278	22	115
HAMILTON . . . . .	997	1 051	31 089	18 121	1 065	1 273	31 107	18 221	68	222	18	99
HANCOCK . . . . .	914	866	27 088	12 125	978	1 014	27 101	12 189	64	148	13	64
HARRISON . . . . .	1 523	1 225	20 478	11 099	1 673	1 677	20 517	11 303	150	452	39	203
HENDRICKS . . . . .	1 148	1 145	27 306	17 683	1 240	1 408	27 327	17 796	92	263	21	114
HENRY . . . . .	1 249	1 207	34 792	17 533	1 355	1 463	34 832	17 634	106	256	40	101
HOWARD . . . . .	930	861	33 733	17 224	973	1 020	33 746	17 288	43	159	12	64
HUNTINGTON . . . . .	1 115	1 128	30 180	16 093	1 172	1 301	30 197	16 165	57	173	17	72
JACKSON . . . . .	1 196	1 101	35 401	20 504	1 257	1 343	35 409	20 610	61	242	8	106
JASPER . . . . .	1 002	1 055	67 943	37 384	1 030	1 194	67 950	37 439	28	139	7	55
JAY . . . . .	1 304	1 157	25 197	12 676	1 383	1 482	25 212	12 830	79	325	15	154
JEFFERSON . . . . .	1 159	1 082	12 917	7 261	1 246	1 316	12 946	7 387	87	234	29	126
JENNINGS . . . . .	855	736	20 508	6 289	943	976	20 528	6 387	88	240	20	98
JOHNSON . . . . .	876	793	25 754	14 836	959	966	25 775	14 910	83	173	22	74
KNOX . . . . .	1 006	1 113	50 802	25 622	1 038	1 192	50 811	25 656	32	79	9	34
KOSCIUSKO . . . . .	1 686	1 664	68 258	40 689	1 784	2 038	68 285	40 842	98	374	28	154
LA PORTE . . . . .	1 095	1 147	39 851	24 031	1 133	1 371	39 864	24 133	38	224	13	102
LAGRANGE . . . . .	1 443	1 245	41 761	22 323	1 486	1 466	41 775	22 422	43	221	14	99
LAKE . . . . .	685	734	25 422	13 966	734	878	25 439	14 024	49	144	17	58
LAWRENCE . . . . .	975	706	11 404	6 679	1 067	1 004	11 419	6 794	92	298	15	115
MADISON . . . . .	1 346	1 324	40 863	18 665	1 442	1 661	40 895	18 820	96	337	32	155
MARION . . . . .	471	493	14 971	9 329	1 549	695	14 992	9 418	78	202	20	89
MARSHALL . . . . .	1 422	1 416	33 453	21 115	1 501	1 711	33 467	21 246	79	295	14	131

# INTRODUCTION Continued

FARMS AND VALUE OF PRODUCTS SOLD BY 1974 AND 1959 DEFINITIONS, WITH COMPARABLE DATA FOR AGRICULTURAL OPERATIONS EXCLUDED BY 1974 DEFINITION: 1974 AND 1969--CONTINUED

COUNTY	BY 1974 DEFINITION				BY 1959 DEFINITION				AGRICULTURAL OPERATIONS EXCLUDED BY 1974 DEFINITION BUT NOT BY 1959 DEFINITION			
	NUMBER		VALUE OF AGRICULTURAL PRODUCTS SOLD (\$1,000)		NUMBER		VALUE OF AGRICULTURAL PRODUCTS SOLD (\$1,000)		NUMBER		VALUE OF AGRICULTURAL PRODUCTS SOLD (\$1,000)	
	1974	1969	1974	1969	1974	1969	1974	1969	1974	1969	1974	1969
MARTIN . . . . .	447	348	6 817	4 289	461	485	6 820	4 340	14	137	3	51
MIAMI . . . . .	1 065	1 097	35 002	20 136	1 129	1 260	35 025	20 208	64	163	23	72
MONROE . . . . .	525	409	4 926	3 058	592	592	4 947	3 129	67	183	20	71
MONTGOMERY . . . . .	1 200	1 223	43 876	25 913	1 249	1 389	43 890	25 978	49	166	14	65
MORGAN . . . . .	814	761	18 354	9 744	915	1 010	18 374	9 844	101	249	20	100
NEWTON . . . . .	556	593	46 053	18 664	577	647	46 059	18 694	21	54	6	31
NOBLE . . . . .	1 356	1 202	27 998	17 547	1 418	1 517	28 015	17 694	62	315	17	146
OHIO . . . . .	288	275	2 766	1 916	305	330	2 773	1 957	17	55	7	40
ORANGE . . . . .	743	632	12 407	8 532	780	867	12 417	8 628	37	235	10	96
OWEN . . . . .	760	611	8 448	4 959	800	810	8 464	5 034	40	199	16	76
PARKE . . . . .	756	734	21 788	13 080	785	867	21 797	13 139	29	133	10	59
PERRY . . . . .	625	434	6 006	3 526	649	583	6 013	3 587	24	149	8	61
PIKE . . . . .	526	518	12 876	7 879	566	669	12 887	7 948	40	151	12	69
PORTER . . . . .	727	737	23 562	12 174	777	946	23 572	12 273	50	209	10	99
POSEY . . . . .	806	807	31 047	15 247	837	911	31 058	15 291	31	104	11	44
PULASKI . . . . .	892	897	37 916	18 210	918	971	37 927	18 240	26	74	10	30
PUTNAM . . . . .	1 135	1 137	27 462	17 361	1 227	1 361	27 476	17 448	92	224	14	88
RANDOLPH . . . . .	1 486	1 423	42 030	18 094	1 556	1 673	42 044	18 195	70	250	14	101
RIPLEY . . . . .	1 359	1 253	21 123	12 350	1 424	1 553	21 145	12 488	65	300	22	138
RUSH . . . . .	1 038	1 035	48 738	24 243	1 076	1 131	48 744	24 282	38	96	6	39
ST JOSEPH . . . . .	1 112	1 056	27 573	15 161	1 173	1 364	27 589	15 300	61	308	16	140
SCOTT . . . . .	522	408	7 985	4 049	566	568	7 991	4 129	44	160	6	79
SHELBY . . . . .	1 161	1 162	39 074	19 726	1 212	1 364	39 085	19 807	51	202	11	80
SPENCER . . . . .	1 040	959	25 390	12 976	1 056	1 136	25 393	13 048	16	177	4	72
STARKE . . . . .	602	590	18 039	10 685	630	754	18 047	10 761	28	164	8	76
STUBEN . . . . .	782	687	16 612	9 577	812	892	16 622	9 668	30	205	10	92
SULLIVAN . . . . .	864	792	22 617	12 151	911	970	22 631	12 224	47	178	14	73
SWITZERLAND . . . . .	736	663	7 329	4 229	781	785	7 336	4 297	45	122	8	67
TIPPECANOE . . . . .	998	1 029	39 566	22 870	1 080	1 187	39 584	22 941	82	158	18	71
TIPTON . . . . .	711	758	31 798	17 009	754	817	31 817	17 036	43	59	19	26
UNION . . . . .	388	381	16 222	9 721	409	412	16 227	9 735	21	31	5	14
VANDENBURGH . . . . .	438	453	15 482	7 549	472	544	15 489	7 584	34	91	7	34
VERMILLION . . . . .	442	391	13 925	7 979	478	472	13 936	8 017	36	81	11	37
VIGO . . . . .	777	744	11 379	11 124	855	948	11 403	11 215	78	204	24	91
WABASH . . . . .	1 207	1 235	50 594	25 056	1 249	1 415	50 607	25 133	42	180	13	77
WARREN . . . . .	615	609	32 986	12 781	641	695	32 996	12 814	26	86	10	33
WARRICK . . . . .	616	596	14 961	7 508	658	766	14 975	7 590	42	170	14	82
WASHINGTON . . . . .	1 389	1 209	25 357	14 615	1 447	1 512	25 376	14 738	58	303	18	123
WAYNE . . . . .	1 107	994	37 799	20 153	1 172	1 193	37 817	20 245	65	199	19	92
WELLS . . . . .	1 241	1 248	35 687	16 227	1 301	1 439	35 704	16 321	60	191	17	95
WHITE . . . . .	920	1 075	54 709	26 474	947	1 166	54 720	26 518	27	91	11	45
WHITLEY . . . . .	1 219	1 052	27 014	14 347	1 269	1 351	27 027	14 475	50	299	13	128





# CHART 1. Changes in the State's Agriculture: 1974 From 1969—Continued

## FARMS WITH SALES OF \$2,500 AND OVER

Value of agricultural products sold by farms having sales of—

- Under \$2,500 .....
- \$2,500 and over .....
- \$2,500 to \$9,999 .....
- \$10,000 to \$39,999 .....
- \$40,000 to \$99,999 .....
- \$100,000 and over .....

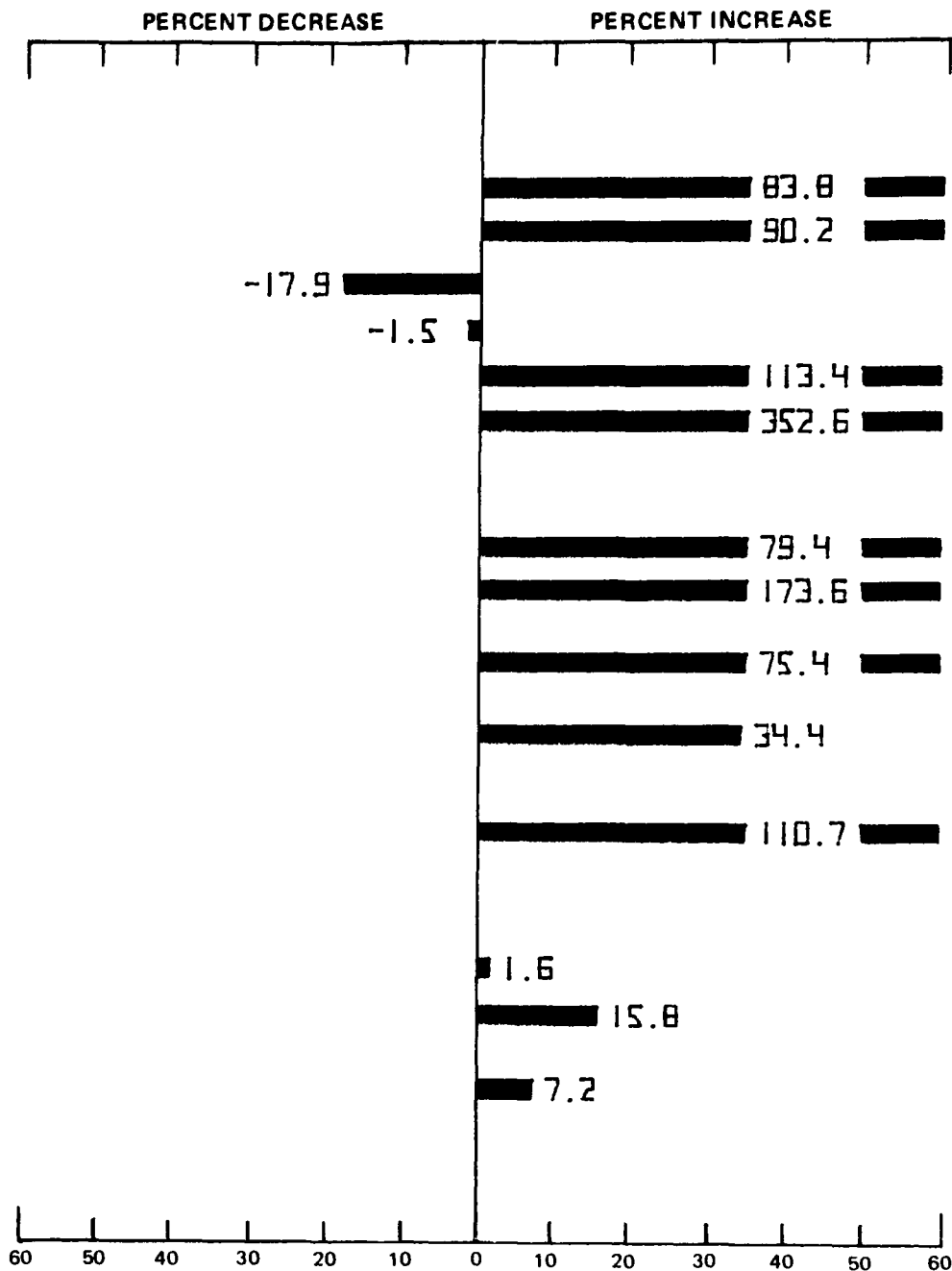
Farm production expenses—specified items:

- Commercially mixed formula feeds .....
- Commercial fertilizer .....
- Gasoline and other petroleum fuel and oil for the farm business .....
- Farm labor, contract labor, machine hire and customwork .....

Value of machinery and equipment on farms .....

Machinery and equipment on farms—specified items:

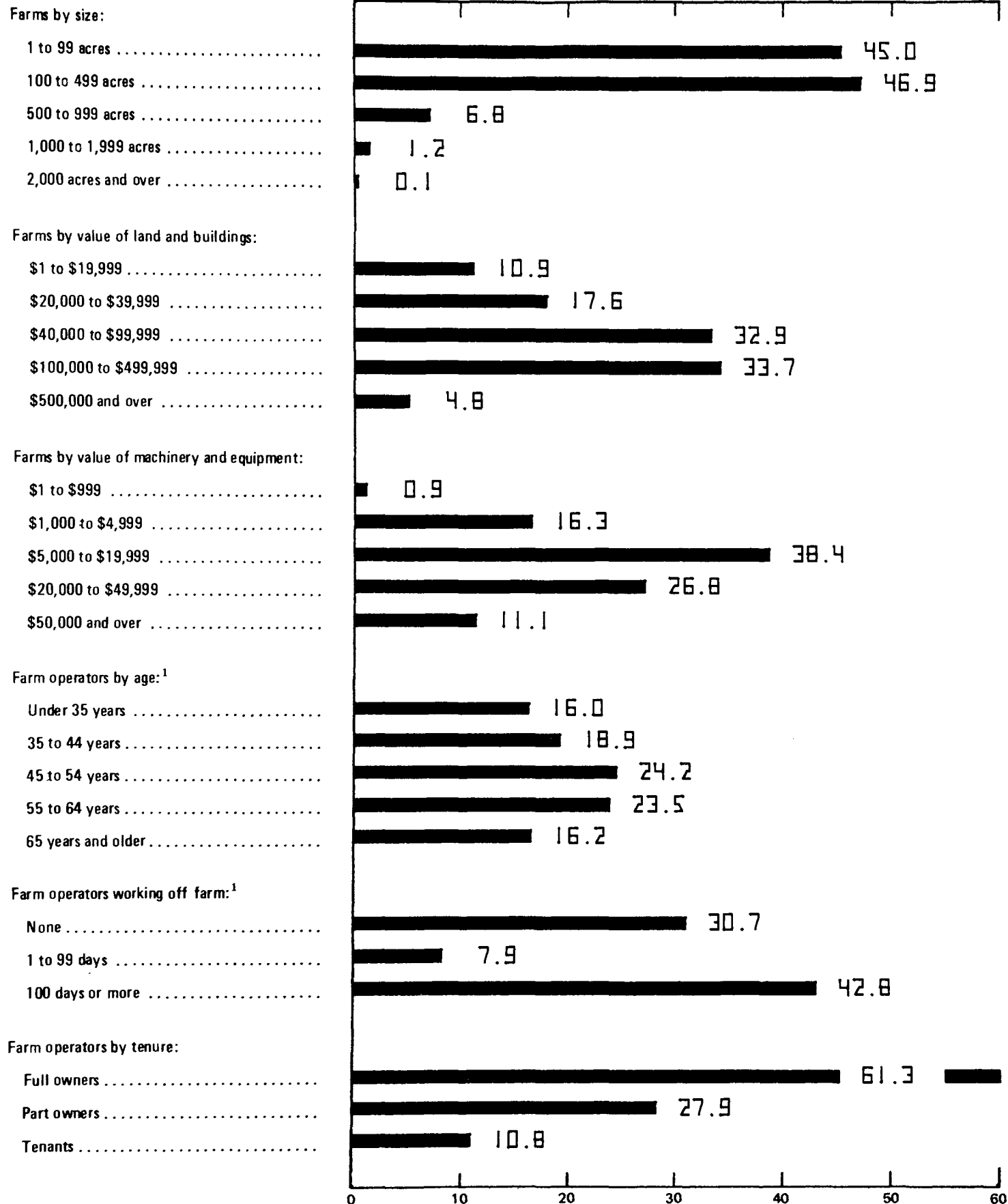
- Automobiles .....
- Motortrucks, including pickups .....
- Tractors, excluding garden tractors and motor tillers .....



# CHART 2. Profile of the State's Agriculture: 1974

## ALL FARMS

### PERCENT OF TOTAL FARMS



<sup>1</sup> Data apply only to individual or family operations (sole proprietorships) and partnerships.



## CHART 2. Profile of the State's Agriculture: 1974—Continued

### ALL FARMS

PERCENT OF TOTAL FARMS

#### Farms by value of agricultural products sold:

Under \$2,500 .....	20.7
\$2,500 to \$4,999 .....	12.0
\$5,000 to \$9,999 .....	15.6
\$10,000 to \$19,999 .....	16.0
\$20,000 to \$39,999 .....	14.4
\$40,000 to \$99,999 .....	14.9
\$100,000 and over .....	6.3

#### Value of agricultural products sold by farms having sales of—

Under \$2,500 .....	0.9
\$2,500 to \$4,999 .....	1.5
\$5,000 to \$9,999 .....	3.8
\$10,000 to \$19,999 .....	7.7
\$20,000 to \$39,999 .....	13.9
\$40,000 to \$99,999 .....	31.4
\$100,000 and over .....	40.8

#### Farms by amount of total production expenses:

\$1 to \$999 .....	10.0
\$1,000 to \$4,999 .....	31.7
\$5,000 to \$9,999 .....	18.3
\$10,000 to \$19,999 .....	15.5
\$20,000 to \$59,999 .....	17.7
\$60,000 and over .....	6.7

#### Sources of farm income:

Crops .....	59.5
Livestock, poultry, and their products .....	39.1
Other farm-related sources <sup>1</sup> .....	1.4

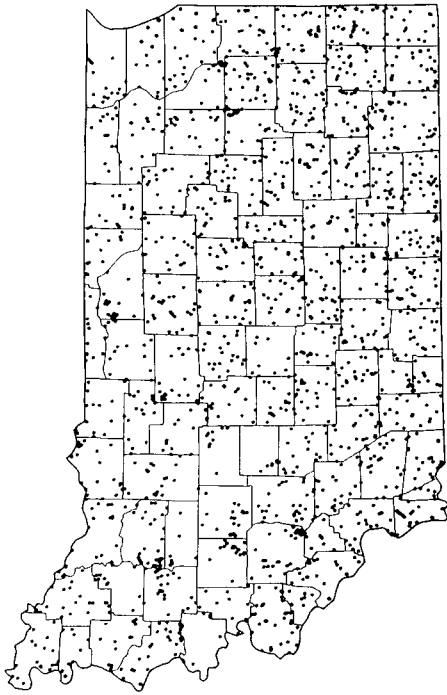
#### Type of organization for farms with sales of \$2,500 and over:

Individual or family .....	87.9
Partnership .....	10.7
Corporation .....	1.2
Other .....	0.2

0 10 20 30 40 50 60

<sup>1</sup> Includes forest products sold, and income from customwork and other agricultural services, recreational services, participation in government farm programs, rental of farm property, and other miscellaneous sources closely related to the agricultural operation.

**NUMBER OF FARMS: 1974**

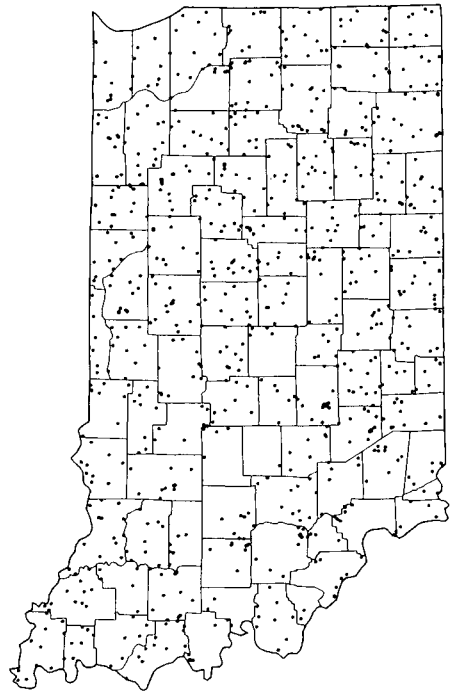


1 DOT = 50

U.S. Department of Commerce  
Bureau of the Census

74 - 1IN

**LAND IN FARMS: 1974**

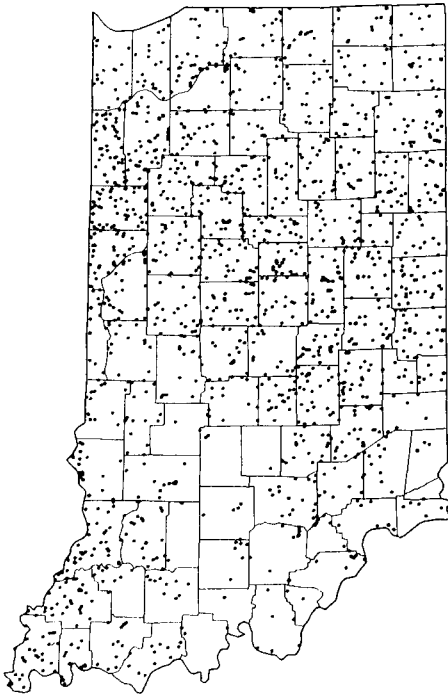


1 DOT = 20,000 ACRES

U.S. Department of Commerce  
Bureau of the Census

74 - 2IN

**VALUE OF CROPS SOLD: 1974**

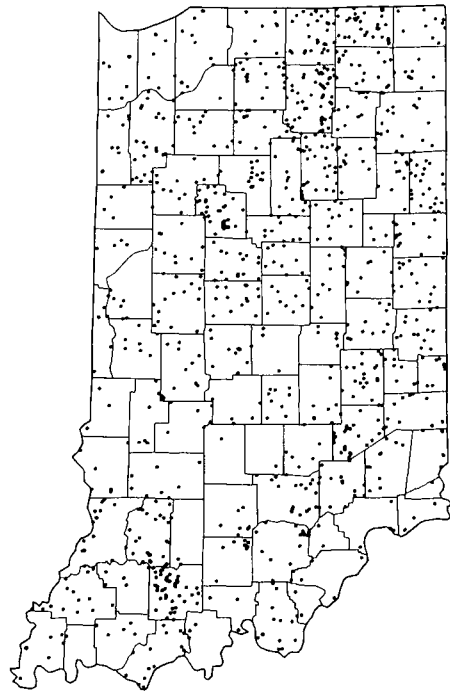


1 DOT = \$1,000,000

U.S. Department of Commerce  
Bureau of the Census

74 - 3IN

**VALUE OF LIVESTOCK, POULTRY,  
AND THEIR PRODUCTS SOLD: 1974**

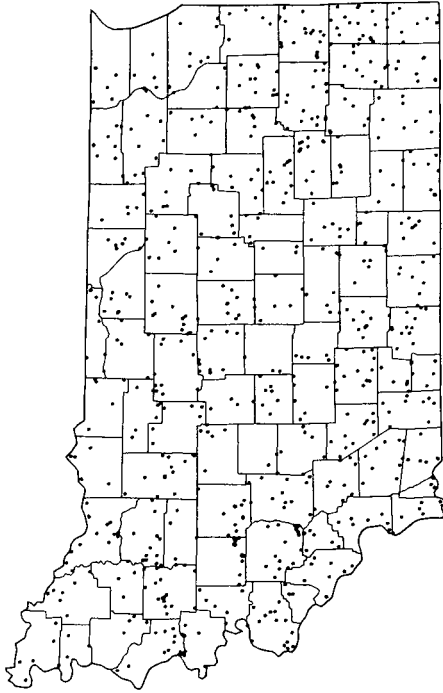


1 DOT = \$1,000,000

U.S. Department of Commerce  
Bureau of the Census

74 - 4IN

**CATTLE AND CALVES: 1974**

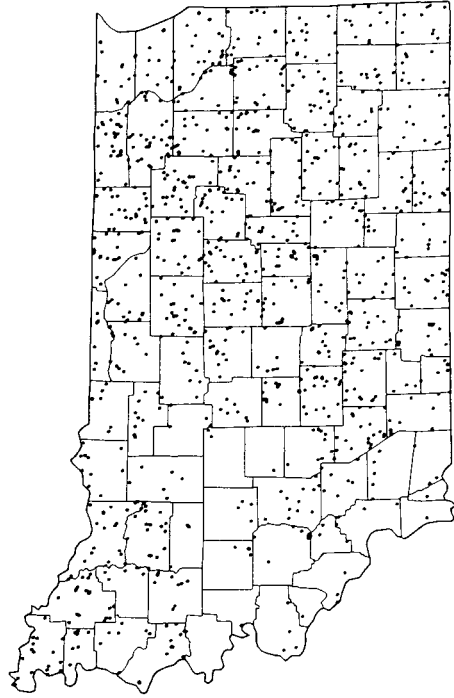


1 DOT = 2,500

U.S. Department of Commerce  
Bureau of the Census

74 - 5IN

**CORN HARVESTED FOR ALL PURPOSES: 1974**

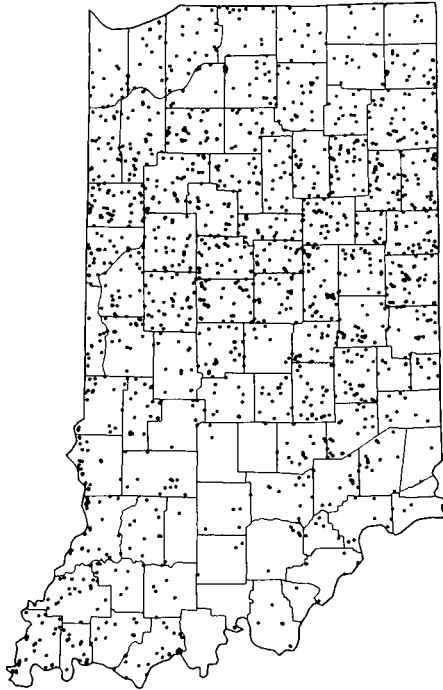


1 DOT = 5,000 ACRES

U.S. Department of Commerce  
Bureau of the Census

74 - 8IN

**SOYBEANS HARVESTED FOR BEANS: 1974**

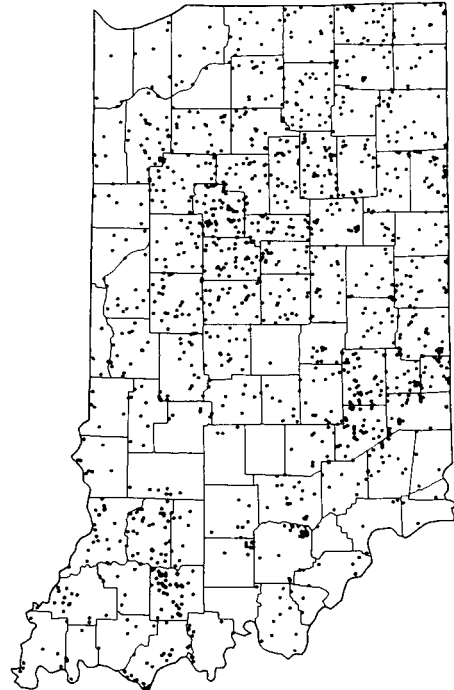


1 DOT = 2,500 ACRES

U.S. Department of Commerce  
Bureau of the Census

74 - 9IN

**HOGS AND PIGS: 1974**



1 DOT = 2,500

U.S. Department of Commerce  
Bureau of the Census

74 - 11IN

# INDIANA

## Counties, County Seats, and Rivers

