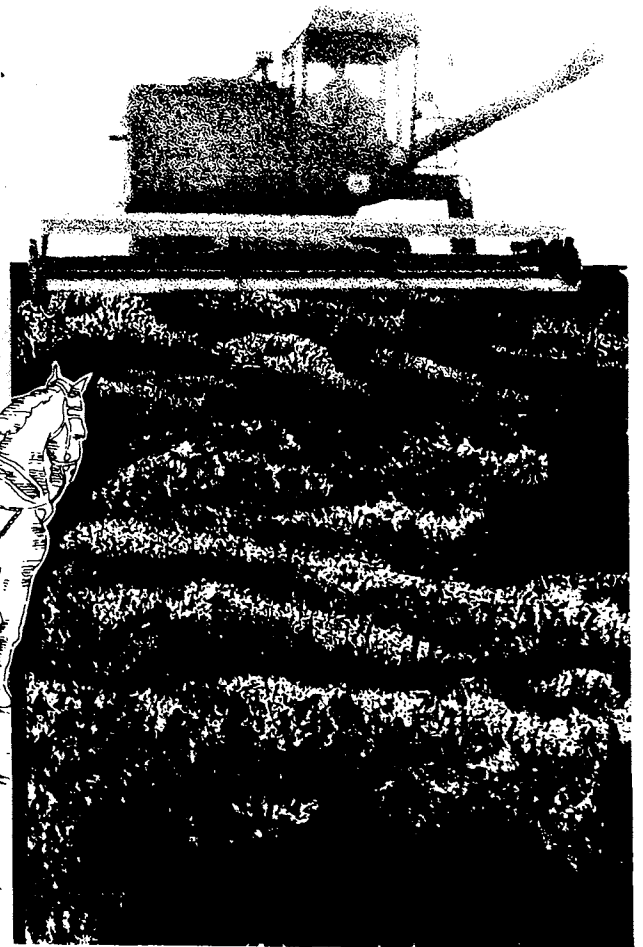
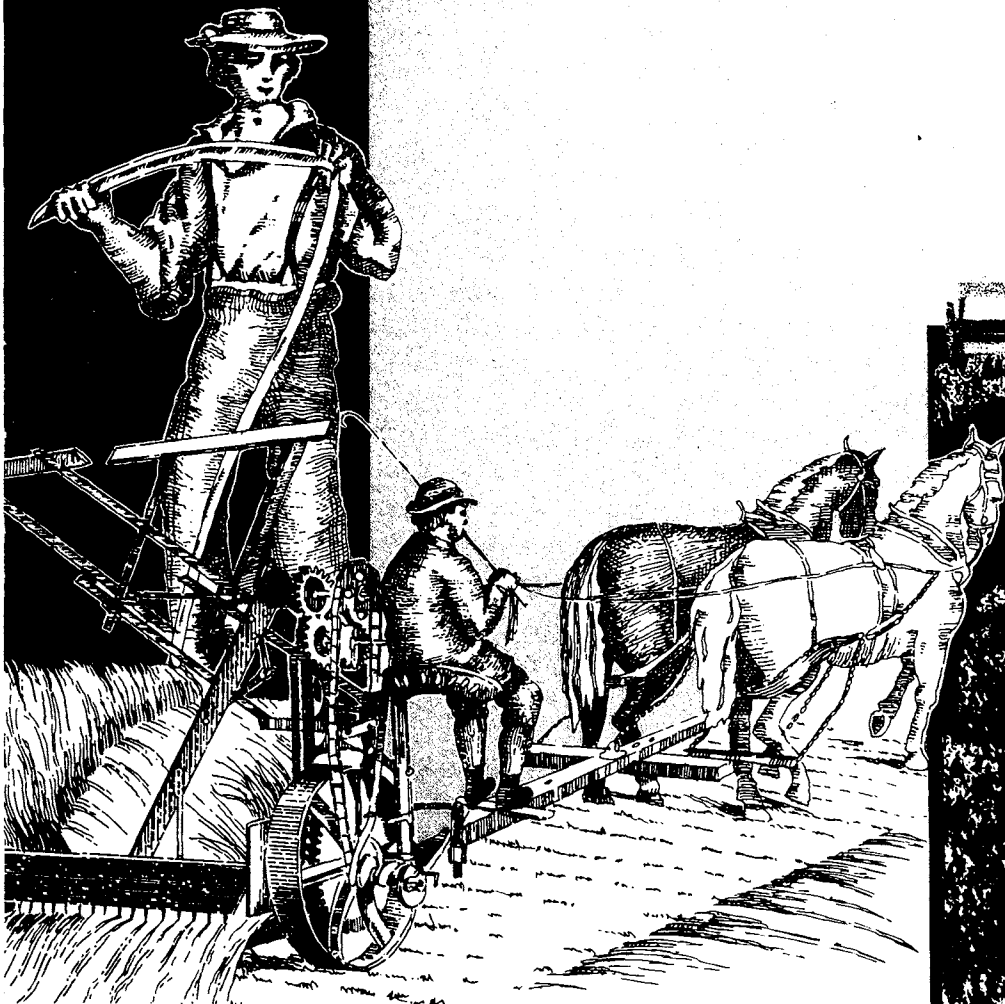


1974 Census of Agriculture

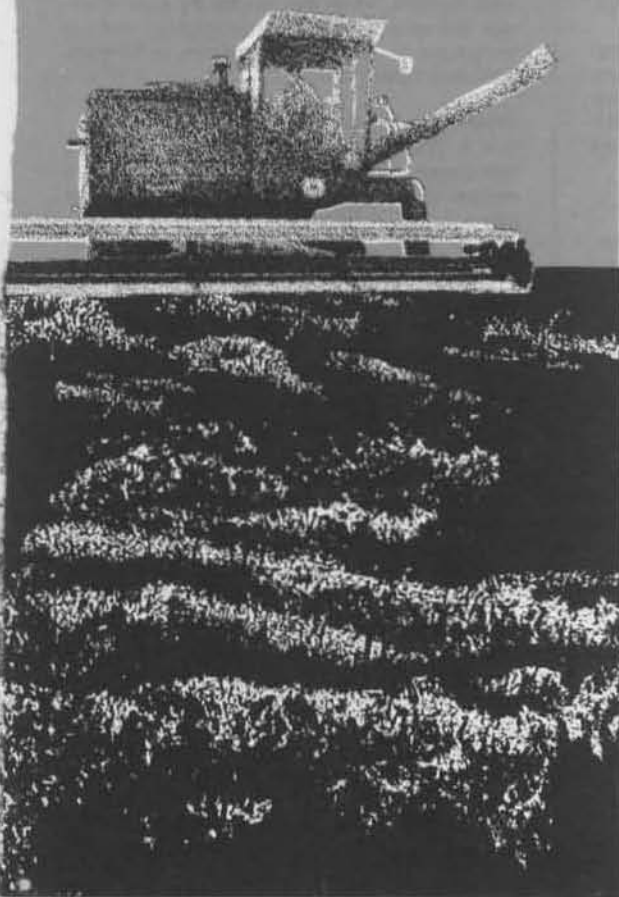
U.S. Department of Commerce
BUREAU OF THE CENSUS

Volume I Part 15
Iowa
State and
County Data



1974 Census of Agriculture

Volume I Part 15
Iowa
State and
County Data



Issued July 1977



U.S. Department of Commerce
Juanita M. Kreps, Secretary

BUREAU OF THE CENSUS
Manuel D. Plotkin, Director

BUREAU OF THE CENSUS

Manuel D. Plotkin, Director

Robert L. Hagan, Deputy Director

Shirley Kallek, Associate Director for Economic Fields

AGRICULTURE DIVISION

Orvin L. Wilhite, Chief

ACKNOWLEDGMENTS—Many persons participated in the various activities of the 1974 Census of Agriculture. Primary direction was by Shirley Kallek, Associate Director for Economic Fields. Her predecessor, James W. Turbitt, now Associate Director for Administration and Field Operations, directed the early stages of planning for the census.

This report was prepared in the Agriculture Division under the general supervision of J. Thomas Breen, Chief (to February 1976), and Orvin L. Wilhite, his successor. Arnold L. Bollenbacher, assisted by Thomas D. Monroe, Donald R. Jahnke, John A. Blackledge, William A. Harlan, and John C. Womack, was directly responsible for review and analysis of the data and for clerical and computer edit and tabulation specifications. Kenneth R. Norell, assisted by Albert W. Graybill, coordinated the organization and content of the publication tables. Robert S. Taylor, assisted by John E. Adkins, Stephen M. Schobel, Loyd C. Brown, Jack H. Margolis, Edward J. James, and William R. Adams, was directly responsible for the operational aspects of data collection, processing, and tabulation, including preparation of control systems, clerical procedures, and computer programs. Janet W. Hall provided editorial services and coded the Linotron table formats of this report for publication via the Linotron computer system. J. Jack Ingram (to September 1974) and Charles E. Rogers, his successor, assisted by Darrell D. Prochaska and Harold V. Edwards, were directly responsible for mailing list acquisition and unduplication, design of sampling procedures for data collection, monitoring of processing, and evaluation of coverage. J. Thomas Miller, Consultant, assisted in the design and content of the data collection forms and followup letters, specifications for publication tables, and preparation of text. O. Bryant Benton, Chief, Data Preparation Division, Jeffersonville, Indiana (to March 1976), and Don L. Adams, his successor, assisted by Robert L. Allen, Rebecca Nesbit, and Darrell L. Farabee, were directly responsible for clerical and data-encoding operations.

The computer processing facilities used were under the general supervision of James R. Pappal, Chief, Computer Services Division (to May 1976), and Thomas C. DiNenna, his successor.

Forms design was accomplished under the general supervision of Cecil B. Matthews, Chief, Administrative Services Division (to September 1975), and Henry J. Husmann, his successor, assisted by Gladys S. Potts and Cathern S. Kline.

Maps were prepared by the Geography Division under the general supervision of Jacob Silver,

Chief, assisted by Frederick R. Broome and Henry Tom.

Within the Publications Services Division, many individuals made significant contributions in the areas of publication planning and design, editorial review, composition, and printing procurement.

Important contributions were made by the members of the Census Advisory Committee on Agriculture Statistics in establishing data needs and priorities for collection and publication of the information. Other representatives of both public and private organizations also made significant recommendations and suggestions.

Members of various agencies of the U.S. Department of Agriculture provided advice and counsel during the planning, data collecting, and processing phases of the census and assisted farmers and ranchers who requested help in completing the report form.

The press, farm magazines, and radio and television stations, were most helpful in publicizing the census and encouraging cooperation of farm and ranch operators. Dean L. Quirin, Agriculture Division, and Dorothy W. Whitson, Public Information Office, were primarily responsible for developing and coordinating the public relations program.

Special tribute is paid to the millions of farm and ranch operators and other agriculture-associated people who furnished the information requested in the census. Only through their cooperation was it possible to collect and publish the data in this report.

Library of Congress Cataloging in Publication Data

United States. Bureau of the Census.
1974 census of agriculture.

CONTENTS: v. 1. State reports. v.—v.2. Statistics by subject. v.—v. 3. Agricultural services. v.—v. 4. Special reports. v.

1. Agriculture—Economic aspects—United States—Statistics—Collected works. I. Title.
II. Title: Census of agriculture.

HD1753 1974.B87 1977 338.1'0973

76-608387

For sale by Superintendent of Documents, U.S. Government Printing Office, Washington, D.C. 20402, or any U.S. Department of Commerce district office. Postage stamps not acceptable; currency submitted at sender's risk. Remittances from foreign countries must be by international money order or by draft on a U.S. bank. S/N 003-024-01328-2

REPORTS OF 1974 CENSUS OF AGRICULTURE

Preliminary Reports. Four pages of data published separately for each county having 10 farms or more, and for each State, the four geographic regions, and the United States. *The statistics printed in these reports are superseded by those in the final reports, Volumes I through IV.*

Volume I. State and County Data. One for each State, Puerto Rico, Guam, and the Virgin Islands, covering the area and its subdivisions. The reports for the States contain data for all farms and farms with sales of \$2,500 and over. *Chapter I* contains detailed data at the State level classified by size of farm, tenure and age of farm operator, type of organization, value of products sold, and major type of farm; *Chapter II*, county data summarized by subject; *Chapter III*, county data by subject for miscellaneous crop and livestock items found in relatively few counties; *Chapter IV*, county data by county.

Volume II. Statistics by Subject. Chapters containing total data for the United States, geographic regions and divisions, and States, for all farms and farms with sales of \$2,500 and over.

Volume III. Agricultural Services. Data by county for each State covering establishments whose primary activities are providing agricultural services. Data at the U.S., State, and county levels for all establishments are presented for selected four-digit standard industrial classification codes by size and type of organization. Data shown include dollar volume of business, gross receipts from products provided, gross receipts, labor and payroll by type of service performed, capital expenditures, and expenditures for electricity, gasoline, petroleum, and other fuels.

Volume IV. Special Reports.

Part 1. Graphic Summary. Profiles the Nation's agricultural system in a series of U.S. maps, a number of which are printed in color. The characteristics of America's farms in 1974 are illustrated for crops, livestock, and many other characteristics.

Part 2. Ranking Counties and States. Reports on the top ranking 100 counties and 10 States in descending order of importance for 88 selected items for 1974 with comparative data for 1969.

Part 3. Coverage Evaluation. Shows the completeness of the agriculture census for States, geographic divisions, and the United States. Data also show the characteristics of farms missed by value of sales and by selected standard industrial (type-of-farm) classifications. Sampling reliability of the estimate of coverage is shown by value of sales classifications.

Part 4. Procedural History. A comprehensive summary of the procedures used in conducting the 1974 Census of Agriculture in the 50 States, Puerto Rico, Guam, and the Virgin Islands. The history explains the procedures used from early planning and testing through tabulation and publication of the final reports.

CONTENTS

	Page
Introduction.	IX
Table—Farms and Value of Products Sold by 1974 and 1959 Definitions, With Comparable Data for Agricultural Operations Excluded by 1974 Definition: 1974 and 1969	XI
Highlights of the State's Agriculture: 1974 and 1969	XIII
Chart 1—Changes in the State's Agriculture: 1974 from 1969	XIV
Chart 2—Profile of the State's Agriculture: 1974	XVI
Map—Number of Farms: 1974	XVIII
Map—Land in Farms: 1974	XVIII
Map—Value of Crops Sold: 1974	XVIII
Map—Value of Livestock, Poultry, and Their Products Sold: 1974	XVIII
Map—Cattle and Calves: 1974	XIX
Map—Corn Harvested for All Purposes: 1974	XIX
Map—Soybeans Harvested for Beans: 1974	XIX
Map—Hogs and Pigs: 1974	XIX
State Map	XX

CHAPTER I. State Data

All Farms

TABLE 1. Farms, Land in Farms, and Land Use: 1940 to 1974	I-1
2. Farms, Land in Farms, and Land Use, by Size of Farm: 1974, 1969, and 1964	I-1
3. Farm Operators—Tenure and Characteristics: 1974, 1969, and 1964	I-2
4. Farm Income and Sales: 1974, 1969, and 1964	I-2
5. Farm Production Expenses: 1974, 1969, and 1964	I-3
6. Selected Machinery and Equipment on Place: 1974, 1969, and 1964	I-4
7. Livestock and Poultry—Inventory and Sales: 1974, 1969, and 1964	I-4
8. Crops Harvested and Value of Production: 1974, 1969, and 1964	I-5
9. Summary by Occupation and Age: 1974	I-5

Farms With Sales of \$2,500 and Over

TABLE 10. Farms, Land in Farms, and Land Use: 1974, 1969, and 1964	I-11
11. Farms, Land in Farms, and Land Use, by Size of Farm: 1974, 1969, and 1964	I-11
12. Irrigation, Artificial Drainage, and Artificial Ponds: 1974 and 1969	I-12
13. Agricultural Chemicals Used: 1974 and 1969	I-12

CONTENTS Continued

Farms With Sales of \$2,500 and Over Continued	Page
TABLE 14. Farm Operators—Tenure and Characteristics: 1974, 1969, and 1964	I-13
15. Value of Agricultural Products Sold: 1974 and 1969	I-13
16. Income From Sources Other Than Sale of Agricultural Products: 1974 and 1969	I-14
17. Farm Production Expenses: 1974, 1969, and 1964	I-14
18. Farm Payroll and Employment: 1974, 1969, and 1964	I-16
19. Machinery and Equipment on Place: 1974, 1969, and 1964	I-16
20. Poultry—Inventory and Sales: 1974 and 1969	I-17
21. Cattle and Calves—Inventory and Sales: 1974 and 1969	I-18
22. Hogs and Pigs—Inventory and Sales: 1974 and 1969	I-20
23. Sheep and Lambs—Inventory and Sales: 1974 and 1969	I-21
24. Other Livestock and Livestock Products—Inventory and Sales: 1974 and 1969	I-21
25. Selected Crops Harvested: 1974, 1969, and 1964	I-22
26. Value of Agricultural Products Sold by Commodity Group and Total Value of Sales: 1974	I-25
27. Contracts: 1974	I-26
28. Summary by Tenure of Farm Operator and Type of Organization: 1974	I-28
29. Summary by Age and Principal Occupation of Farm Operator: 1974	I-36
30. Summary by Size of Farm: 1974	I-52
31. Summary by Value of Agricultural Products Sold: 1974	I-68
32. Summary by Standard Industrial Classification of Farms: 1974	I-76
33. Summary by Standard Industrial Classification of Farms by Value of Sales: 1974	
Cash grain farms	I-92
Cotton farms	(Not shown)
Tobacco farms	(Not shown)
Sugar crop, Irish potato, hay, peanut, and other field crop farms	(Not shown)
Vegetable and melon farms	(Not shown)
Fruit and tree nut farms	(Not shown)
Horticultural specialty farms	(Not shown)
General farms, primarily crop	(Not shown)
Livestock farms, except dairy, poultry, and animal specialty	I-100
Dairy farms	I-108
Poultry and egg farms	I-116
Animal specialty farms	(Not shown)
General farms, primarily livestock	I-124
Farms not classified by SIC	(Not shown)

CHAPTER II. County Summary Data

TABLE 1. Number, Land, and Value of Farms: 1974 and 1969	II-1
2. Land Use: 1974	II-3
3. Irrigation: 1974	II-5
4. Tenure of Farm Operators and Type of Organization of Farms: 1974	II-7
5. Characteristics of All Farm Operators: 1974	II-8

CONTENTS Continued

CHAPTER II Continued		Page
TABLE 6.	Farms by Standard Industrial Classification for Farms With Sales of \$2,500 and Over: 1974	II-9
	7. Farms by Value of Agricultural Products Sold: 1974	II-11
	8. Market Value of Agricultural Products Sold: 1974	II-13
	9. Farm Production Expenses: 1974	II-15
	10. Farm Production Expenses by Item Purchased: 1974	II-16
	11. Machinery and Equipment: 1974	II-21
	12. Cattle and Calves—Inventory and Sales: 1974	II-22
	13. Hogs and Pigs—Inventory and Sales: 1974	II-27
	14. Sheep and Lambs—Inventory and Sales: 1974	II-30
	15. Poultry—Inventory and Sales: 1974	II-32
	16. Horses and Ponies—Inventory and Sales: 1974	II-38
	17. Field Corn for All Purposes: 1974	II-39
	18. Field Corn for Grain: 1974	II-40
	19. Sorghums for All Purposes, Except Sirup: 1974	II-42
	20. Sorghums for Grain: 1974	II-43
	21. Wheat for Grain: 1974	II-44
	22. Soybeans: 1974	II-45
	23. Hay, Excluding Sorghum Hay: 1974	II-46
	24. Peanuts for Nuts: 1974	II-47
	25. Cotton: 1974	II-49
	26. Tobacco: 1974	II-50
	27. Irish Potatoes: 1974	II-51
	28. Vegetables, Sweet Corn, or Melons: 1974	II-52
	29. Berries: 1974	II-53
	30. Land in Orchards: 1974	II-54
	31. Farm Operator Debt for Farms With Sales of \$2,500 and Over: 1974	II-56
	32. Grain Storage Capacity for Farms With Sales of \$2,500 and Over: 1974	II-57
	33. Characteristics of Farms and Specified Excluded Agricultural Operations: 1974.	II-58

CHAPTER III. County Miscellaneous Data

TABLE 1.	Miscellaneous Poultry: 1974	III-1
	2. Miscellaneous Livestock and Animal Specialties: 1974	III-2
	3. Mink: 1974	III-4
	4. Colonies of Bees: 1974	III-4
	5. Angora Goats: 1974 (Not shown)	
	6. Milk Goats: 1974	III-5
	7. Fish: 1974 (Not shown)	
	8. Hay, Field Seeds, Other Specified Field Crops, and Berries: 1974	III-5
	9. Grains, Dry Beans and Peas, Sweetpotatoes, and Sugar Crops: 1974	III-12
	10. Vegetables Harvested for Sale: 1974	III-14
	11. Fruits and Nuts: 1974	III-15
	12. Forest Products—Sales: 1974	III-16
	13. Nursery and Greenhouse Products: 1974	III-17
	14. Farm Operators by Selected Racial and Ethnic Group: 1974	III-17

CONTENTS Continued

CHAPTER IV. County Data (The following tables are common to each county)

	Page
TABLE 1. Farms, Land in Farms, and Land Use: 1974 and 1969	IV-1
2. Farm Operators—Tenure and Characteristics: 1974 and 1969	IV-1
3. Market Value of Agricultural Products Sold: 1974 and 1969	IV-2
4. Income From Sources Other Than Sale of Agricultural Products: 1974 and 1969	IV-2
5. Farm Production Expenses: 1974 and 1969	IV-2
6. Machinery and Equipment on Place: 1974 and 1969	IV-3
7. Cattle and Calves—Inventory and Sales: 1974 and 1969	IV-3
8. Hogs, Sheep, Goats, and Horses—Inventory and Sales: 1974 and 1969	IV-4
9. Poultry—Inventory and Sales: 1974 and 1969	IV-4
10. Crops: 1974 and 1969	IV-5
11. Irrigation and Commercial Fertilizer on Pastureland and Harvested Crops for Farms With Sales of \$2,500 and Over: 1974 and 1969	IV-5
12. Agricultural Chemicals Used and Cost of Materials for Farms With Sales of \$2,500 and Over: 1974 and 1969	IV-6
13. Irrigation, Artificial Drainage, and Artificial Ponds for Farms With Sales of \$2,500 and Over: 1974 and 1969	IV-6
14. Farm Credit for Farms With Sales of \$2,500 and Over: 1974	IV-6
15. Payroll and Employment for Farms With Sales of \$2,500 and Over: 1974 and 1969	IV-6
Iowa	IV-1
Adair	IV-7
Adams	IV-13
Allamakee	IV-19
Appanoose	IV-25
Audubon	IV-31
Benton	IV-37
Black Hawk	IV-43
Boone	IV-49
Bremer	IV-55
Buchanan	IV-61
Buena Vista	IV-67
Butler	IV-73
Calhoun	IV-79
Carroll	IV-85
Cass	IV-91
Cedar	IV-97
Cerro Gordo	IV-103
Cherokee	IV-109
Chickasaw	IV-115
Clarke	IV-121
Clay	IV-127
Clayton	IV-133
Clinton	IV-139
Crawford	IV-145
Dallas	IV-151
Davis	IV-157
Decatur	IV-163
Delaware	IV-169
Des Moines	IV-175
Dickinson	IV-181
Dubuque	IV-187
Emmet	IV-193
Fayette	IV-199
Floyd	IV-205
Franklin	IV-211
Fremont	IV-217
Greene	IV-223
Grundy	IV-229
Guthrie	IV-235
Hamilton	IV-241
Hancock	IV-247
Hardin	IV-253
Harrison	IV-259
Henry	IV-265
Howard	IV-271
Humboldt	IV-277
Ida	IV-283
Iowa	IV-289
Jackson	IV-295

CONTENTS Continued

CHAPTER IV Continued		Page
Jasper	IV-301	Plymouth. IV-451
Jefferson	IV-307	Pocahontas. IV-457
Johnson.	IV-313	Polk IV-463
Jones	IV-319	Pottawattamie IV-469
Keokuk	IV-325	Poweshiek IV-475
Kossuth.	IV-331	Ringgold IV-481
Lee.	IV-337	Sac. IV-487
Linn	IV-343	Scott. IV-493
Louisa.	IV-349	Shelby. IV-499
Lucas	IV-355	Sioux IV-505
Lyon.	IV-361	Story IV-511
Madison.	IV-367	Tama IV-517
Mahaska	IV-373	Taylor. IV-523
Marion	IV-379	Union IV-529
Marshall.	IV-385	Van Buren IV-535
Mills	IV-391	Wapello. IV-541
Mitchell.	IV-397	Warren IV-547
Monona.	IV-403	Washington IV-553
Monroe	IV-409	Wayne. IV-559
Montgomery.	IV-415	Webster. IV-565
Muscatine	IV-421	Winnebago. IV-571
O'brien	IV-427	Winneshiek. IV-577
Osceola	IV-433	Woodbury IV-583
Page	IV-439	Worth IV-589
Palo Alto.	IV-445	Wright. IV-595

APPENDIXES

A. General Explanation	A-1
Taking the Census	A-1
Enumeration Method	A-1
Mailing List	A-1
Report Forms	A-1
Initial Mailing	A-2
Followup Procedures	A-2
Major Changes in Data Collected	A-2
Office Processing	A-3
1969 Data Corrections	A-3
Definitions and Explanations	A-3
Farm Classifications	A-9
Unpublished Data	A-11
Nonsampling Errors	A-11
Census Coverage	A-12
Statistical Adjustments	A-12
Nonresponse	A-12
Sampling	A-12
Reliability of Adjustment for Nonresponse and Sampling	A-12
B. Characteristics of Agricultural Operations Qualifying as Farms by the 1959 Definition but Excluded by the 1974 Definition: 1974 and 1969	B-1
C. Report Forms	
Regular Report Form	C-1
Short Report Form	C-23

INDEX	Index-1
-----------------	---------

INTRODUCTION

Authority, Area Covered, and History

The 1974 Census of Agriculture was taken in accordance with the provisions of Title 13, United States Code, reaffirmed by section 818 of the Agriculture and Consumer Protection Act of 1973 (Public Law 93-86). Sections 142(a) and 191 of Title 13 provide for a census of agriculture every 5 years in each State, the District of Columbia, Puerto Rico, Guam, and the Virgin Islands.

The 1974 census is the 20th nationwide census of agriculture and the second conducted primarily by mail. The first agricultural census data were collected in 1840 as part of the sixth decennial census. Since that time, a census of agriculture has been a part of each decennial census program, and since 1920 a national census of agriculture has been taken every 5 years.

Farm Definition

For each of the 20 censuses of agriculture except the first, taken in 1840, the agency responsible for conducting the census has established minimum criteria which define a farm for the purpose of the census. As the Nation has developed and grown, agriculture also has changed and grown, and from time to time the minimum criteria for the definition of a farm have been changed.

Prior to 1974, the eighth and most recent change in minimum criteria was for the 1959 Census of Agriculture, when the definition of a farm was based primarily on a combination of acres in the place and value of agricultural products sold.

The word "place" was defined to include all land on which agricultural operations were conducted at any time in the census year under the day-to-day control or supervision of one person or partnership. Control may have been exercised through ownership or management or through a lease, rental, or cropping arrangement.

Places of less than 10 acres in the census year were counted as farms if the estimated sales of agricultural products for the year amounted to at least \$250. Places of 10 or more acres in the census year were counted as farms if the estimated sales of agricultural products for the year amounted to at least \$50. Places having less than the \$50 or \$250 minimum estimated sales in the census year were also counted as farms if they could normally be expected to produce agricultural products in sufficient quantity to meet the requirements of the definition.

Using the 1959 definition, the 1969 census reported about 571,000 farms in the United States having sales of less than \$1,000; these farms comprised 20.9 percent of all farms but contributed less than 1 percent of total sales. In 1974 there were only about 152,000 such farms, accounting for less than 6 hundredths of 1 percent of total sales. Between censuses many of these small farms had ceased operations, while many others had sales of \$1,000 or more in the census year, either because of increased agricultural activity or because of increases in the per unit value of agricultural products sold.

In view of increases in price levels and other changes in the structure of agricultural operations, various individuals

and organizations, including members of the Census Advisory Committee on Agriculture Statistics, the Office of Management and Budget, and the U.S. Department of Agriculture, agreed that a change in the definition of a farm was justified. The Department of Commerce announced on August 12, 1975, that the census definition of a farm, for purposes of publishing the 1974 census data, was any establishment which during the census year had or normally would have had sales of agricultural products of \$1,000 or more.

In the next 10 months, Congress held four hearings on the appropriateness of changing the definition. During this time, Public Law 94-229, enacted March 15, 1976, included a provision requiring the statistical classification of farms in effect on January 1, 1975, to be continued in effect through June 30, 1976, and that any statistical report issued on or before June 30, 1976, should reflect such classification, but could also include additional classifications as deemed appropriate by the Secretary of Commerce.

Definition for preliminary reports. Publication of the preliminary county reports began in April 1976, and these reports for all counties and States, the four regions, and the United States were tabulated and published in accordance with the same farm definition used for the 1959, 1964, and 1969 censuses.

Definition for final reports. For all final reports, the 1974 statistics are in accordance with the 1974 definition, which differs from the earlier definition in only two respects:

INTRODUCTION Continued

1. The criterion for number of "acres in place" has been deleted.
2. The criterion for minimum value of agricultural products sold has been changed to \$1,000.

Thus for 1974, a farm was defined to include all land on which agricultural operations were conducted at any time in the census year under the day-to-day control of an individual management, and from which \$1,000 or more of agricultural products were sold during the census year. Control may have been exercised through ownership or management, or through a lease, rental, or cropping arrangement. Places having less than the minimum \$1,000 sales in the census year were also counted as farms if they could normally be expected to produce agricultural products in sufficient quantity to meet the requirements of the definition.

Three tables in this report provide users with measures of the effect of the change in definition: The table following this introduction shows farms and sales, by county, for 1974 and 1969, for both the old and the new definitions, and also for those places excluded by the 1974 but not by the 1959 definition. In chapter II, table 33 presents data by county for 1974 showing comparisons between farms (1974 definition) and agricultural operations that would have been farms under the 1959 definition. The table that comprises appendix B presents data by State for 1974 and 1969 showing characteristics of 1974 agricultural operations excluded by the new definition and of 1969 farms having less than \$1,000 total value of sales.

The 1974 "all farms" data shown in State tables 1 through 9 and county tables 1 through 10 are for those agricultural operations with at least \$1,000 in total (or potential) sales of farm products. All other tables in this report are limited to farms with sales of \$2,500 or more (see the paragraphs in appendix A that describe the report forms and the enumeration method).

Comparability of Data

In general, data for 1974 and earlier

censuses are comparable with data from earlier censuses only for farms with \$2,500 or more total value of sales, because the data for farms with \$2,500 or more value of sales are not affected by the change in farm definition. Data for all farms for 1974 are based on the new definition so they are not directly comparable to earlier censuses. It is also important to note that in addition to the difference in farm definition used in this report from that in the preliminary version, this final report contains 1974 figures which will not agree with figures in the preliminary reports because of corrections, additions, and deletions.

Even for farms with \$2,500 or more value of sales, the difference in timing and the change from personal interview to mail enumeration affect the comparability between the data for 1974 and 1969 and that for earlier censuses. Both 1974 and 1969 censuses were taken by mail; all earlier censuses were taken by direct interview.

Dramatic changes in rates of farm expenditure and unit prices of products sold between the 1969 and 1974 censuses affect the comparability of some census data. During the period between the two censuses, prices paid by farmers greatly increased. Prices received by farmers also increased but with wide fluctuations among commodities at different times during the census year of 1974.

Crop and livestock production data are for the calendar year 1974, except for a few crops (such as citrus) for which the production year overlaps the calendar year. Expenditures, crops irrigated, usage of agricultural chemicals and fertilizers, and sale of farm products were all asked for the calendar year. Respondents were instructed to report inventory numbers of livestock, poultry, and other specified items as of December 31, 1974. The reporting period and inventory data are the same as for the 1969 census.

Censuses prior to 1969 were taken by enumerators, each assigned to a specific geographic area. Field work for the 1964 and 1959 censuses was completed largely in October, November, and December of the reference year. Livestock and poultry inventories for those two censuses were as

of the time of enumeration. Other variations in time of enumeration occurred in censuses prior to 1959.

Graphics

On the following pages, there is a graphic presentation of selected agricultural statistics for this State. The first four dot maps are being published for all States. The second four dot maps have been selected to present data of particular importance to this State.

Tabular Presentation

State data—In chapter I, State tables 1 through 27 show detailed State level data generally accompanied by historical data for one or more censuses. Tables 28 through 33 provide 1974 State data cross-tabulated by various farm classifications.

County summary data—A summary of selected data items for each county of the State is presented in chapter II of this publication. In these tables the counties are listed in alphabetical order with the State total at the beginning of each table.

County miscellaneous data—In chapter III, data for additional crop and livestock items not common to a large number of counties are reported in a separate set of tables by county for each State. Some of these items, even though reported in only a few counties of the State, are sufficiently important to account for a significant proportion of the agricultural production.

Counties not having the subject item of a given table, or with only a very limited number of farms reporting the item, are not listed separately; their data are combined with other counties and presented as "All other."

Final county data—Six pages of data are presented in chapter IV for each county with 10 farms or more in 1974. The tables include final data for each county and are more comprehensive than those in the preliminary reports. Data are for the year 1974 with inventory (on place)

INTRODUCTION Continued

figures as of December 31, 1974. Information covering all farms and farms with sales of \$2,500 and over are presented for both the 1974 and 1969 censuses. A State level six-page report like the county report is published at the beginning of the chapter.

Preliminary county data—Preliminary reports have been published separately for all counties in the United States with 10 farms or more in 1974. This four-page series provided, at the earliest possible date, usable information on a limited number of major data items, with comparative final figures from the 1969 census.

The reports were issued on a flow basis, with a State report following the release of the last county report for each State. Tables showing regional and U.S. totals were also prepared as a part of this series.

For all States, the same table format was used to present the data except data for six selected crops shown in table 7. These crops were varied by State depending upon their relative importance.

For major items at the county level differences between the preliminary and final figures are in general less than 5 percent. At the State level, differences are significantly less.

"See Text" Reference

The remark "See text" in the tables refers to explanations, definitions, and classifications in sections 5 and 6 of appendix A.

Abbreviations and Symbols

The following abbreviations and symbols are used throughout the tables:

- Represents zero.
- D Data withheld to avoid disclosing information for individual farms.
- X Not applicable.
- Z Less than half of the unit reported.
- NA Not available.

FARMS AND VALUE OF PRODUCTS SOLD BY 1974 AND 1959 DEFINITIONS, WITH COMPARABLE DATA FOR AGRICULTURAL OPERATIONS EXCLUDED BY 1974 DEFINITION: 1974 AND 1969

COUNTY	BY 1974 DEFINITION				BY 1959 DEFINITION				AGRICULTURAL OPERATIONS EXCLUDED BY 1974 DEFINITION BUT NOT BY 1959 DEFINITION			
	NUMBER		VALUE OF AGRICULTURAL PRODUCTS SOLD (\$1,000)		NUMBER		VALUE OF AGRICULTURAL PRODUCTS SOLD (\$1,000)		NUMBER		VALUE OF AGRICULTURAL PRODUCTS SOLD (\$1,000)	
	1974	1969	1974	1969	1974	1969	1974	1969	1974	1969	1974	1969
IOWA, TOTAL	126 104	132 102	6 319 637	3 652 049	129 363	140 354	6 320 602	3 655 512	3 259	8 252	965	3 463
ADAIR	1 261	1 357	46 044	29 062	1 277	1 423	46 049	29 089	16	66	6	27
ADAMS	874	881	28 414	20 148	883	924	28 417	20 163	9	43	3	15
ALLAMAKEE	1 210	1 352	41 770	25 681	1 236	1 439	41 778	25 715	26	87	8	34
APPANOOSE	937	974	17 023	11 772	973	1 108	17 037	11 823	36	134	13	51
AUDUBON	1 063	1 183	57 392	38 817	1 082	1 211	57 399	38 828	19	28	7	12
BENTON	1 669	1 730	94 565	54 811	1 704	1 827	94 572	54 849	35	97	7	38
BLACK HAWK	1 447	1 469	71 200	36 721	1 492	1 609	71 212	36 782	45	140	12	62
BOONE	1 373	1 390	76 563	40 257	1 419	1 507	76 580	40 310	46	117	17	53
BREMER	1 421	1 429	51 689	27 042	1 460	1 543	51 704	27 099	39	114	15	57
BUCHANAN	1 519	1 611	65 408	33 692	1 549	1 712	65 417	33 740	30	101	10	48
BUENA VISTA	1 324	1 410	86 893	47 502	1 355	1 465	86 898	47 521	31	55	5	19
BUTLER	1 565	1 608	67 133	36 458	1 626	1 692	67 157	36 497	61	84	24	39
CALHOUN	1 266	1 338	78 360	38 594	1 300	1 383	78 374	38 614	34	45	14	21
CARROLL	1 487	1 522	103 284	59 716	1 521	1 565	103 301	59 738	34	43	18	22
CASS	1 240	1 326	58 864	38 954	1 267	1 398	58 872	38 986	27	72	8	31
CEDAR	1 446	1 594	87 731	54 347	1 477	1 667	87 740	54 379	31	73	9	32
CERRO GORDO	1 146	1 233	71 039	33 457	1 187	1 331	71 051	33 503	41	98	12	46
CHEROKEE	1 198	1 296	100 506	56 186	1 216	1 332	100 512	56 198	18	36	6	12
CHICKASAW	1 298	1 311	47 470	26 449	1 334	1 403	47 481	26 490	36	92	11	41
CLARKE	908	820	17 942	13 019	925	899	17 948	13 051	17	79	6	32
CLAYTON	1 827	1 981	70 825	42 561	1 869	2 100	70 838	42 607	42	119	13	46
CLAY	1 093	1 228	72 157	45 708	1 108	1 287	72 162	45 733	15	59	5	25
CLINTON	1 689	1 801	92 038	66 247	1 729	1 880	92 049	66 279	40	79	11	31
CRAWFORD	1 636	1 752	82 064	53 044	1 656	1 794	82 068	53 060	20	42	4	16
DALLAS	1 340	1 336	66 846	35 051	1 406	1 485	66 861	35 112	66	149	15	60
DAVIS	988	990	23 122	13 568	1 003	1 103	23 128	13 620	15	113	6	52
DECATUR	855	856	21 563	14 429	895	981	21 570	14 473	40	125	7	45
DELAWARE	1 499	1 640	78 095	46 427	1 537	1 719	78 105	46 457	38	79	10	30
DES MOINES	840	912	37 620	21 501	876	1 014	37 629	21 544	36	102	9	42
DICKINSON	749	780	46 420	23 871	762	820	46 426	23 889	13	40	6	19
DUBUQUE	1 759	1 745	69 190	47 140	1 816	1 841	69 203	47 174	57	96	13	34
EMMET	790	816	51 106	25 417	813	841	51 112	25 429	23	25	6	12
FAYETTE	1 833	1 917	84 199	44 259	1 874	2 044	84 211	44 303	41	127	12	44
FLOYD	1 196	1 217	55 853	28 804	1 236	1 326	55 861	28 852	40	109	8	48
FRANKLIN	1 287	1 385	83 199	44 051	1 317	1 425	83 208	44 064	30	40	8	14
FREMONT	896	931	48 573	27 603	914	976	48 575	27 621	18	45	2	18
GREENE	1 156	1 186	76 796	37 622	1 184	1 265	76 804	37 655	28	79	8	33
GRUNDY	1 296	1 402	82 909	43 810	1 313	1 422	82 914	43 819	17	20	4	9
GUTHRIE	1 327	1 345	47 343	30 500	1 353	1 422	47 351	30 536	26	77	8	35
HAMILTON	1 293	1 429	90 986	44 968	1 308	1 486	90 992	44 989	15	57	6	21
HANCOCK	1 330	1 416	74 652	37 492	1 346	1 455	74 657	37 507	16	39	5	14
HARDIN	1 300	1 431	95 949	50 592	1 322	1 485	95 954	50 613	22	54	5	20
HARRISON	1 393	1 398	55 747	32 546	1 429	1 490	55 756	32 589	36	92	10	43
HENRY	1 047	1 116	44 144	25 483	1 072	1 220	44 151	25 529	25	104	7	46
HOWARD	1 090	1 220	36 562	20 743	1 104	1 270	36 569	20 768	14	50	6	25
HUMBOLDT	970	1 014	63 924	33 943	979	1 036	63 925	33 955	9	22	1	12
IDA	896	1 030	61 937	40 584	925	1 061	61 948	40 597	29	31	11	14
IOWA	1 235	1 351	58 592	38 795	1 260	1 416	58 600	38 819	25	65	8	25
JACKSON	1 484	1 536	52 404	38 387	1 504	1 618	52 407	38 418	20	82	2	31
JASPER	1 805	1 819	82 308	50 949	1 888	1 971	82 329	51 018	83	152	21	69

INTRODUCTION Continued

FARMS AND VALUE OF PRODUCTS SOLD BY 1974 AND 1959 DEFINITIONS, WITH COMPARABLE DATA FOR AGRICULTURAL OPERATIONS EXCLUDED BY 1974 DEFINITION:
1974 AND 1969--CONTINUED

COUNTY	BY 1974 DEFINITION				BY 1959 DEFINITION				AGRICULTURAL OPERATIONS EXCLUDED BY 1974 DEFINITION BUT NOT BY 1959 DEFINITION			
	NUMBER		VALUE OF AGRICULTURAL PRODUCTS SOLD (\$1,000)		NUMBER		VALUE OF AGRICULTURAL PRODUCTS SOLD (\$1,000)		NUMBER		VALUE OF AGRICULTURAL PRODUCTS SOLD (\$1,000)	
	1974	1969	1974	1969	1974	1969	1974	1969	1974	1969	1974	1969
JEFFERSON	911	1 011	31 050	17 836	957	1 113	31 065	17 879	46	102	15	43
JOHNSON	1 444	1 554	59 081	37 033	1 492	1 667	59 090	37 079	48	113	9	46
JONES	1 412	1 482	69 964	45 620	1 432	1 561	69 970	45 651	20	79	6	31
KEOKUK	1 334	1 403	54 842	32 631	1 397	1 521	54 856	32 680	63	118	15	48
KOSSUTH	2 003	2 155	147 876	69 054	2 043	2 204	147 885	69 076	40	49	9	22
LEE	1 104	1 148	38 731	22 762	1 158	1 275	38 748	22 821	54	127	18	60
LINN	1 926	1 894	66 489	38 317	2 019	2 118	66 513	38 405	93	224	23	89
LOUISA	776	800	36 694	19 738	791	859	36 698	19 760	15	59	4	22
LUCAS	899	847	17 995	13 172	925	938	18 005	13 214	26	91	10	42
LYON	1 379	1 470	87 312	52 376	1 396	1 503	87 322	52 386	17	33	10	10
MADISON	1 271	1 246	36 889	22 780	1 322	1 353	36 905	22 828	51	107	17	48
MAHASKA	1 413	1 490	68 337	40 990	1 444	1 561	68 348	41 021	31	71	11	31
MARION	1 326	1 364	44 928	29 609	1 375	1 508	44 939	29 672	49	144	12	62
MARSHALL	1 360	1 457	75 831	45 750	1 408	1 555	75 852	45 794	48	98	20	45
MILLS	784	811	43 398	26 565	799	868	43 403	26 586	15	57	5	22
MITCHELL	1 109	1 142	57 433	34 300	1 132	1 208	57 441	34 332	23	66	8	31
MONONA	1 227	1 218	65 770	32 830	1 236	1 267	65 773	32 850	9	49	3	21
MONROE	849	814	16 921	10 534	866	916	16 926	10 584	17	102	5	50
MONTGOMERY	842	933	41 821	27 746	862	984	41 824	27 760	20	51	4	13
MUSCATINE	1 135	1 174	47 359	29 536	1 192	1 272	47 375	29 576	57	98	16	40
OSCEOLA	903	935	62 806	30 536	913	949	62 809	30 541	10	14	4	5
O'BRIEN	1 357	1 462	106 930	57 352	1 371	1 514	106 936	57 378	14	52	6	26
PAGE	1 200	1 347	53 128	36 590	1 224	1 443	53 143	36 631	24	96	16	41
PALO ALTO	1 085	1 197	75 560	37 086	1 107	1 235	75 564	37 103	22	38	4	16
PLYMOUTH	2 037	2 094	131 817	74 309	2 100	2 173	131 833	74 343	63	79	16	35
POCAHONTAS	1 239	1 339	83 787	42 095	1 262	1 369	83 797	42 112	23	30	9	17
POLK	1 166	1 159	47 100	23 615	1 251	1 374	47 123	23 705	85	215	23	90
POTTAWATTAMI	1 918	2 108	122 067	93 367	1 980	2 277	122 091	93 437	62	169	24	71
POWESHIEK	1 350	1 386	57 414	33 989	1 379	1 457	57 421	34 013	29	71	7	24
RINGGOLD	924	965	26 753	18 201	945	1 042	26 759	18 237	21	77	7	37
SAC	1 319	1 358	107 956	68 069	1 351	1 410	107 967	68 090	32	52	11	21
SCOTT	1 121	1 228	55 596	36 045	1 165	1 349	55 611	36 096	44	121	16	51
SHELBY	1 412	1 478	77 505	47 567	1 428	1 524	77 509	47 587	16	46	3	20
SIOUX	2 105	2 187	194 107	103 678	2 135	2 242	194 114	103 697	30	55	7	18
STORY	1 354	1 355	77 486	41 573	1 405	1 424	77 496	41 603	51	69	10	31
TAMA	1 702	1 857	84 496	53 083	1 737	1 929	84 512	53 113	35	72	15	30
TAYLOR	1 045	1 125	27 385	20 231	1 068	1 189	27 395	20 260	23	64	10	29
UNION	854	924	24 486	16 922	871	978	24 492	16 946	17	54	5	24
VAN BUREN	1 006	1 011	24 228	13 637	1 020	1 113	24 229	13 686	14	102	1	49
WAPELLO	997	982	27 072	14 649	1 037	1 190	27 081	14 735	40	208	9	87
WARREN	1 502	1 373	34 893	20 341	1 584	1 576	34 912	20 427	82	203	19	86
WASHINGTON	1 271	1 384	65 797	40 447	1 312	1 441	65 811	40 466	41	57	14	19
WAYNE	913	1 037	27 055	17 410	956	1 106	27 065	17 434	43	69	11	24
WEBSTER	1 550	1 576	95 087	36 798	1 580	1 681	95 099	36 840	30	105	12	43
WINNEBAGO	987	1 049	50 683	23 816	998	1 092	50 688	23 834	11	43	4	17
WINNESHIEK	1 816	1 907	59 461	37 058	1 837	2 015	59 468	37 098	21	108	7	40
WOODBURY	1 797	1 825	107 567	75 135	1 850	1 970	107 586	75 193	53	145	19	58
WORTH	924	932	46 160	23 058	954	997	46 164	23 085	30	65	3	27
WRIGHT	1 195	1 295	80 118	37 436	1 216	1 353	80 124	37 466	21	58	5	30

CHART 1. Changes in the State's Agriculture: 1974 From 1969

FARMS WITH SALES OF \$2,500 AND OVER

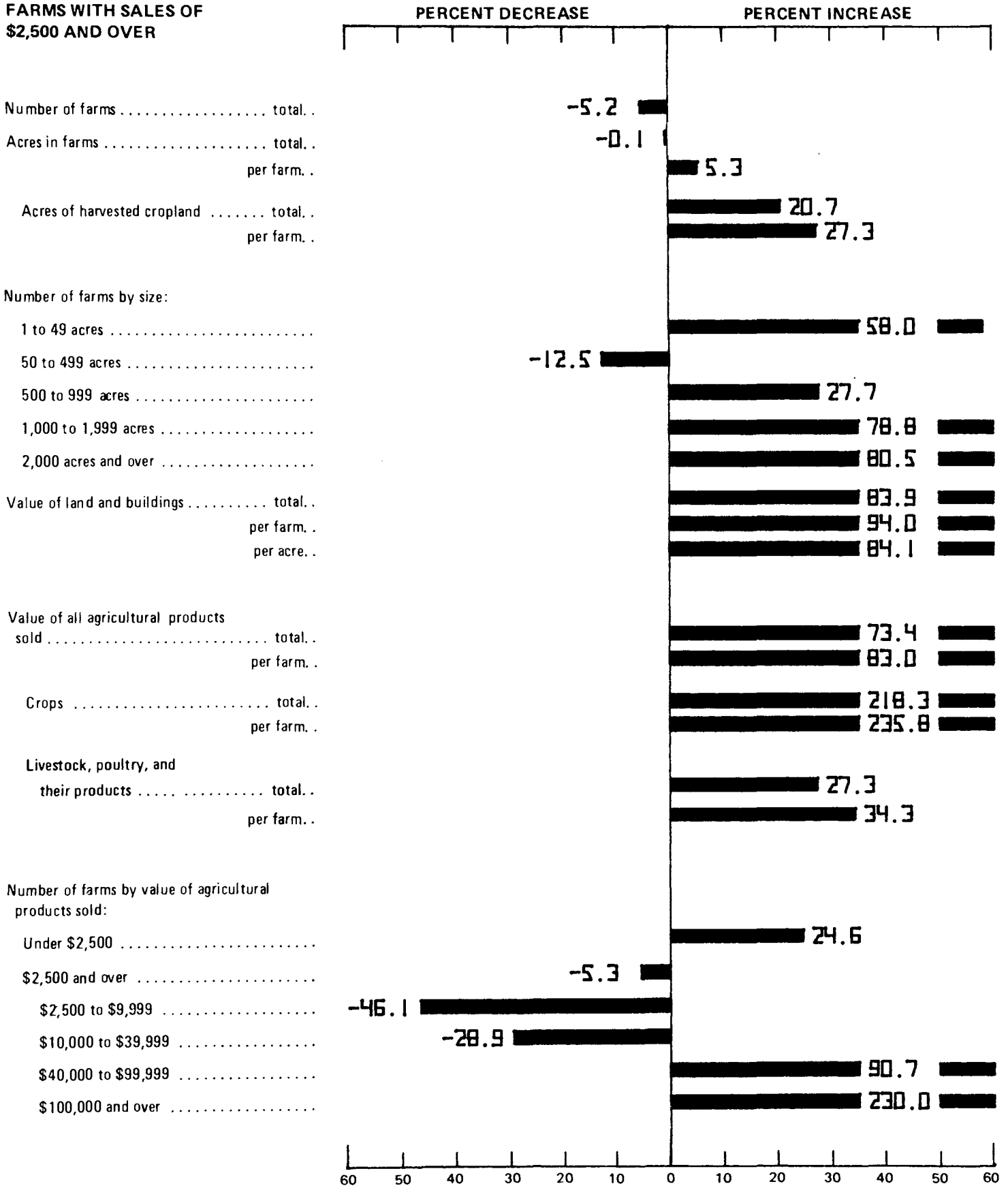


CHART 1. Changes in the State's Agriculture: 1974 From 1969—Continued

FARMS WITH SALES OF \$2,500 AND OVER

Value of agricultural products sold by farms having sales of—

- Under \$2,500
- \$2,500 and over
- \$2,500 to \$9,999
- \$10,000 to \$39,999
- \$40,000 to \$99,999
- \$100,000 and over

Farm production expenses—specified items:

- Commercially mixed formula feeds
- Commercial fertilizer
- Gasoline and other petroleum fuel and oil for the farm business
- Farm labor, contract labor, machine hire and customwork

Value of machinery and equipment on farms

Machinery and equipment on farms—specified items:

- Automobiles
- Motortrucks, including pickups
- Tractors, excluding garden tractors and motor tillers

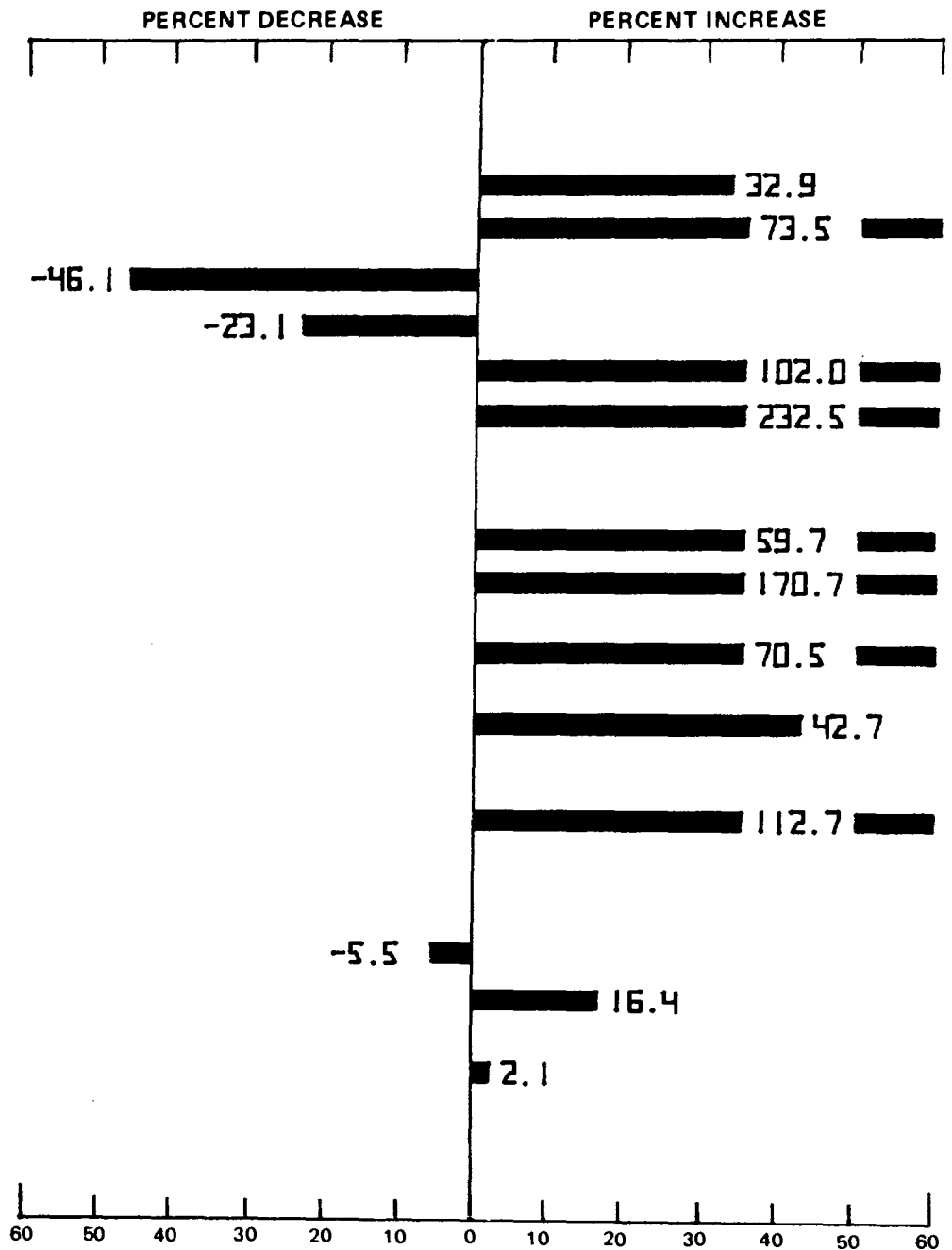
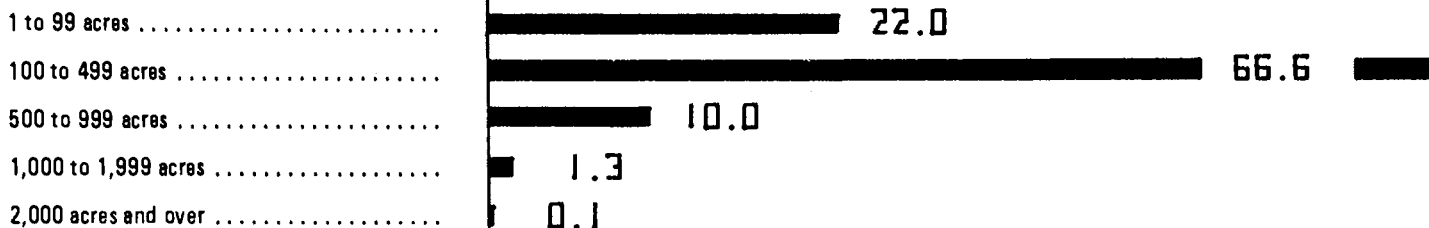


CHART 2. Profile of the State's Agriculture: 1974

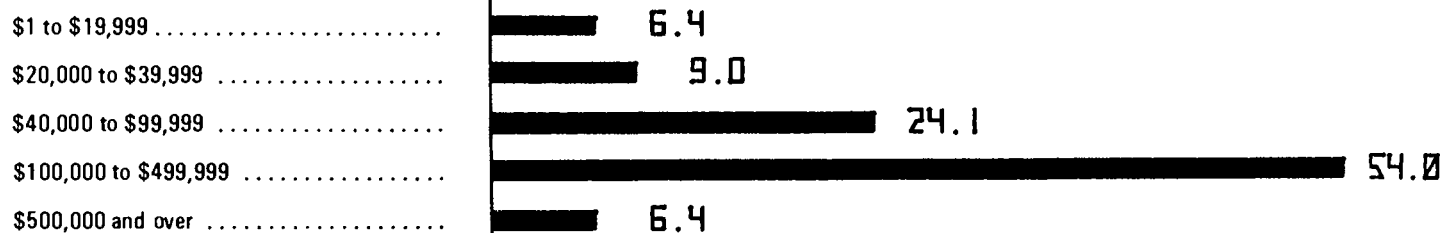
ALL FARMS

PERCENT OF TOTAL FARMS

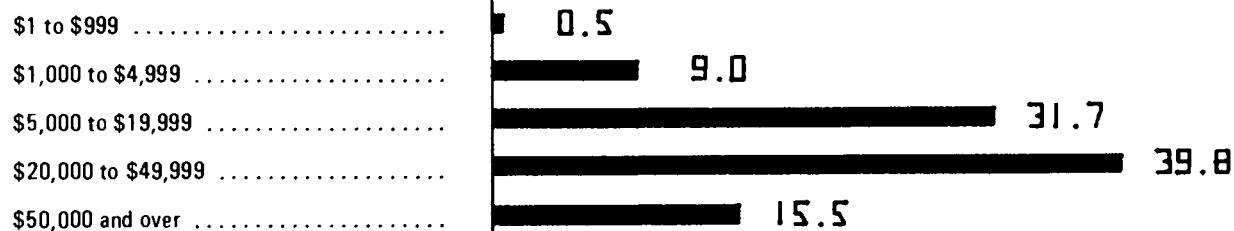
Farms by size:



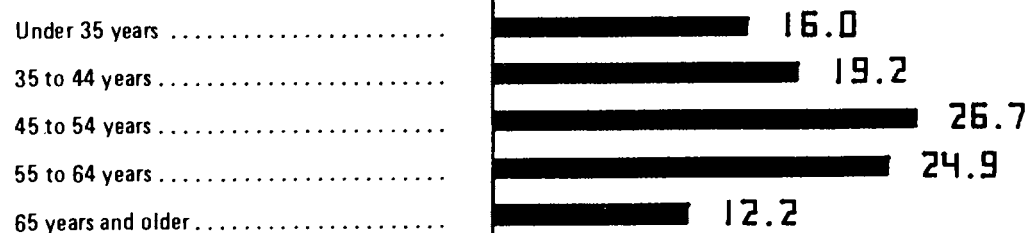
Farms by value of land and buildings:



Farms by value of machinery and equipment:



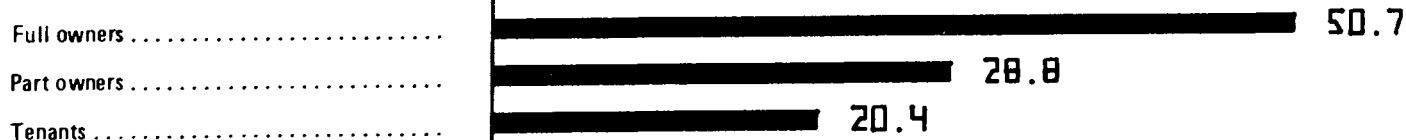
Farm operators by age:¹



Farm operators working off farm:¹

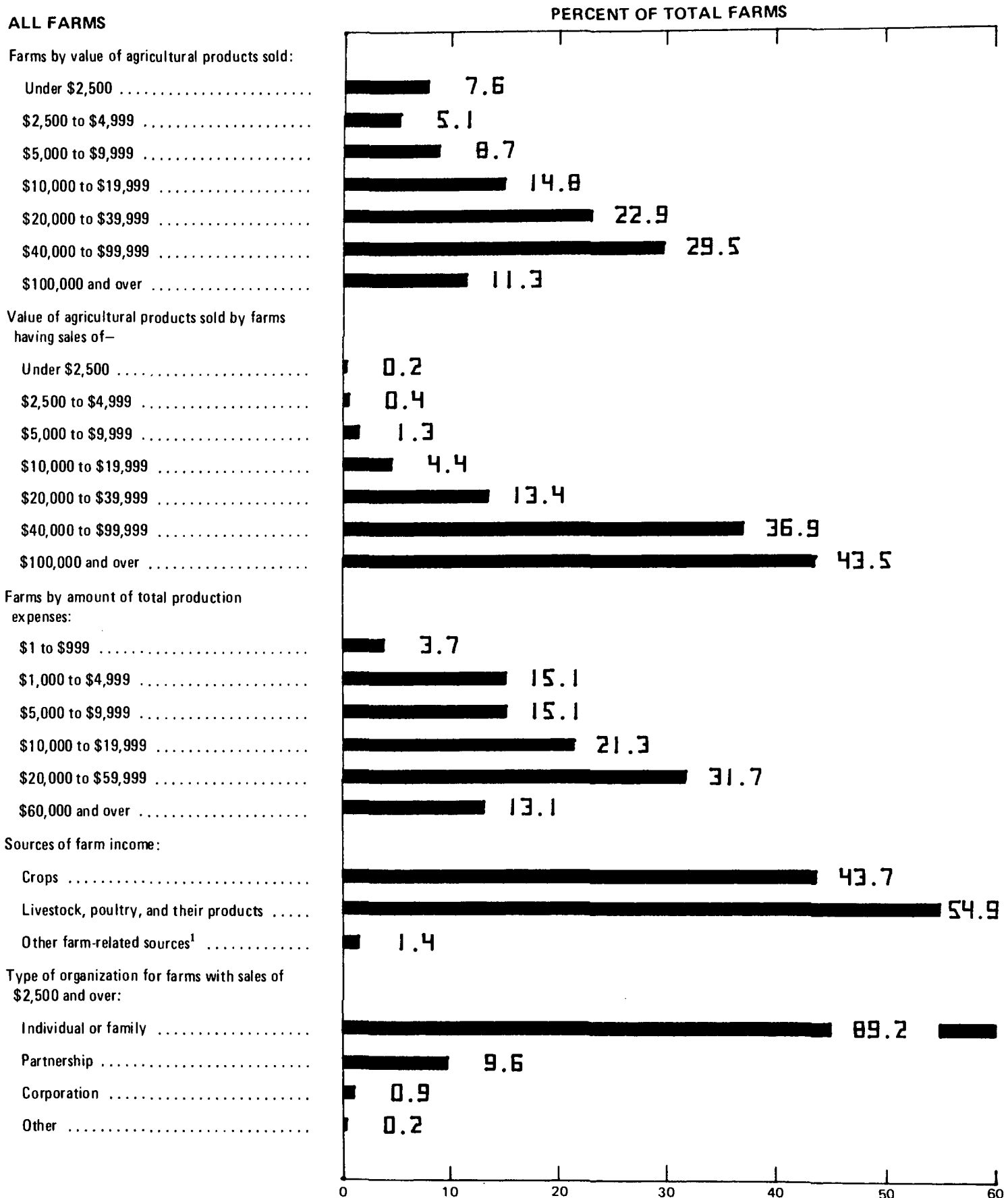


Farm operators by tenure:



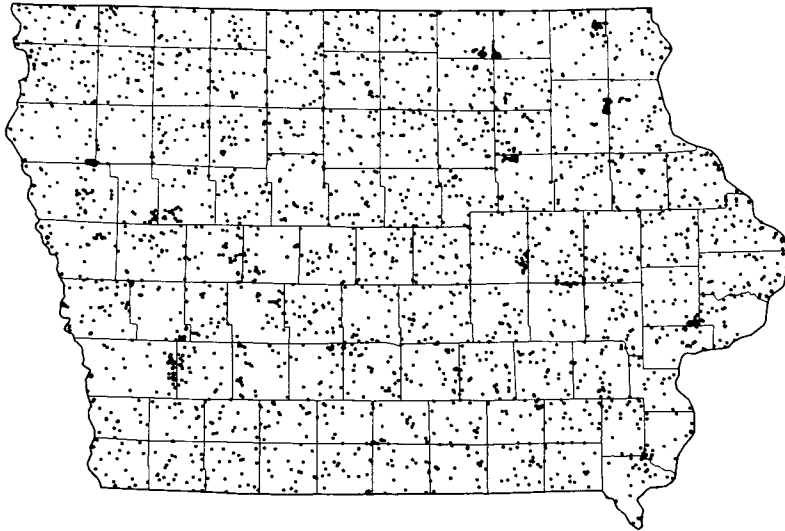
¹ Data apply only to individual or family operations (sole proprietorships) and partnerships.

CHART 2. Profile of the State's Agriculture: 1974—Continued



¹ Includes forest products sold, and income from customwork and other agricultural services, recreational services, participation in government farm programs, rental of farm property, and other miscellaneous sources closely related to the agricultural operation.

NUMBER OF FARMS: 1974

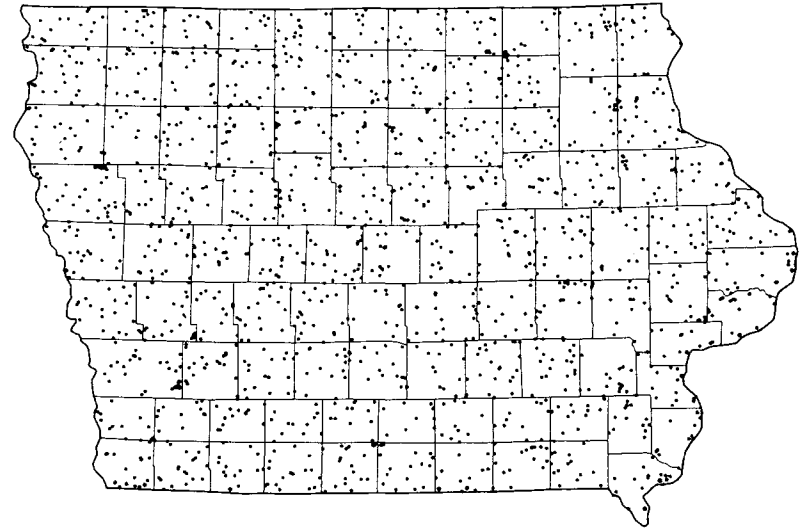


1 DOT = 50

74 - 11A

U.S. Department of Commerce
Bureau of the Census

LAND IN FARMS: 1974

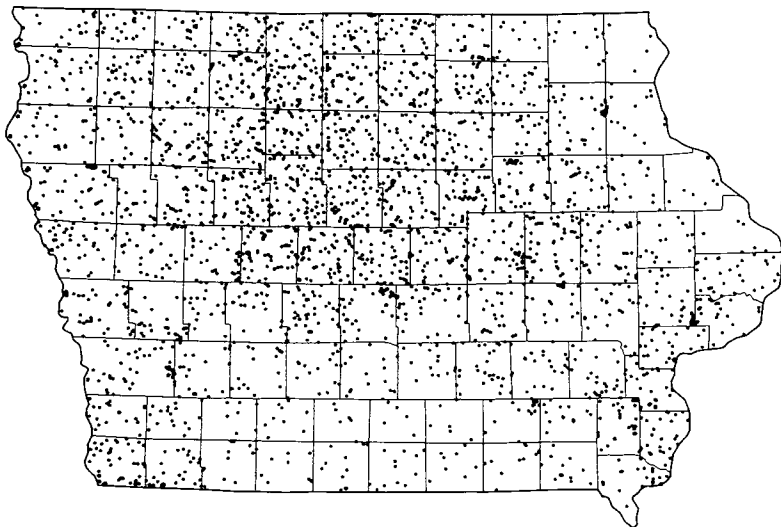


1 DOT = 20,000 ACRES

74 - 21A

U.S. Department of Commerce
Bureau of the Census

VALUE OF CROPS SOLD: 1974

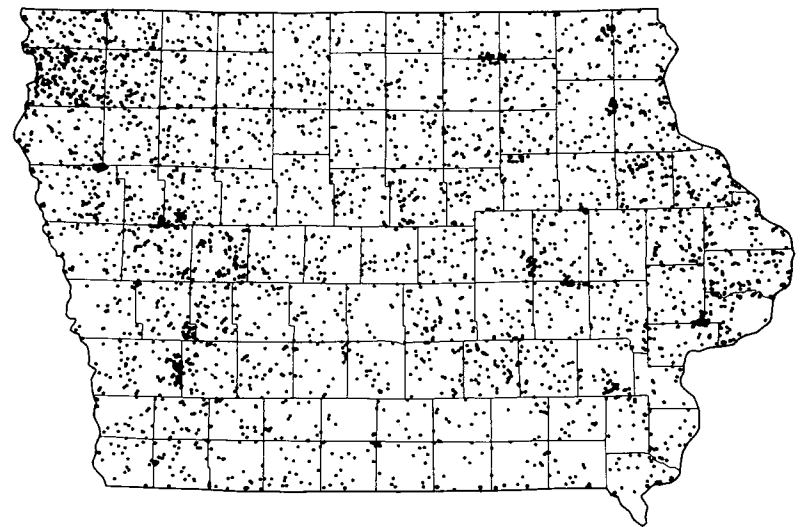


1 DOT = \$1,000,000

74 - 31A

U.S. Department of Commerce
Bureau of the Census

**VALUE OF LIVESTOCK, POULTRY,
AND THEIR PRODUCTS SOLD: 1974**

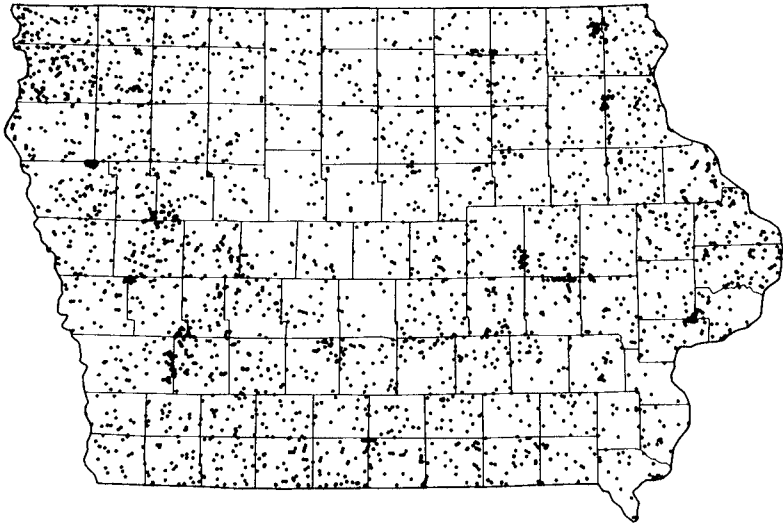


1 DOT = \$1,000,000

74 - 41A

U.S. Department of Commerce
Bureau of the Census

CATTLE AND CALVES: 1974

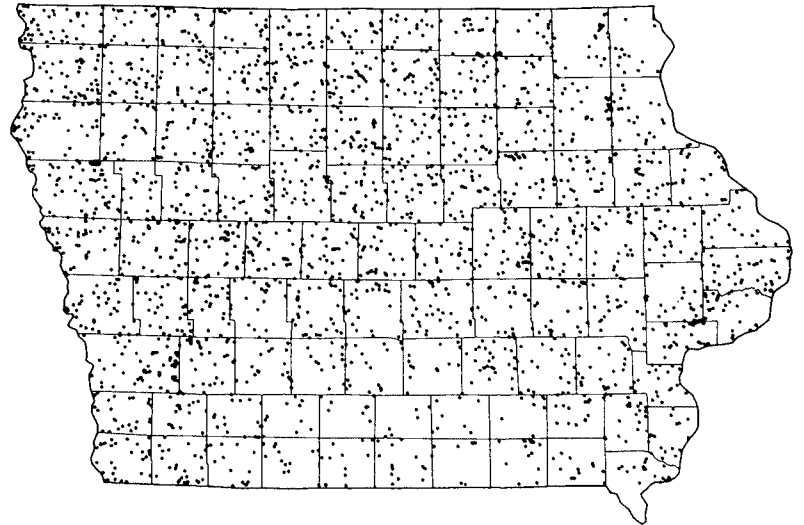


1 DOT = 2,500

U.S. Department of Commerce
Bureau of the Census

74 - 51A

CORN HARVESTED FOR ALL PURPOSES: 1974

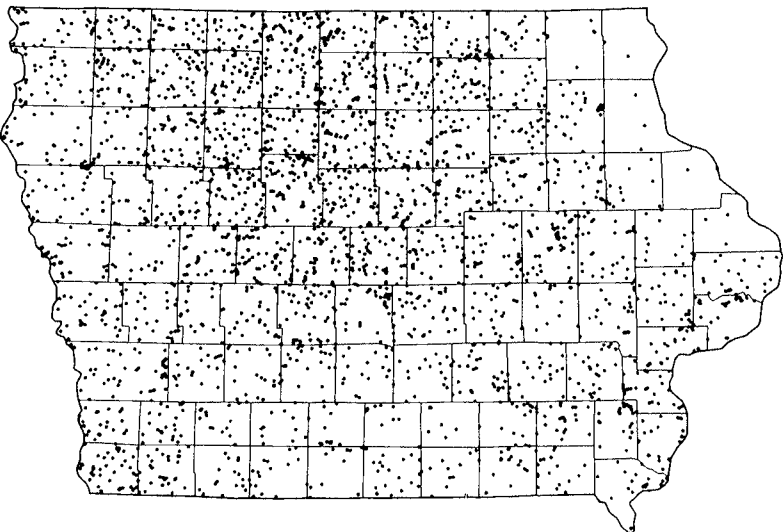


1 DOT = 5,000 ACRES

U.S. Department of Commerce
Bureau of the Census

74 - 81A

SOYBEANS HARVESTED FOR BEANS: 1974

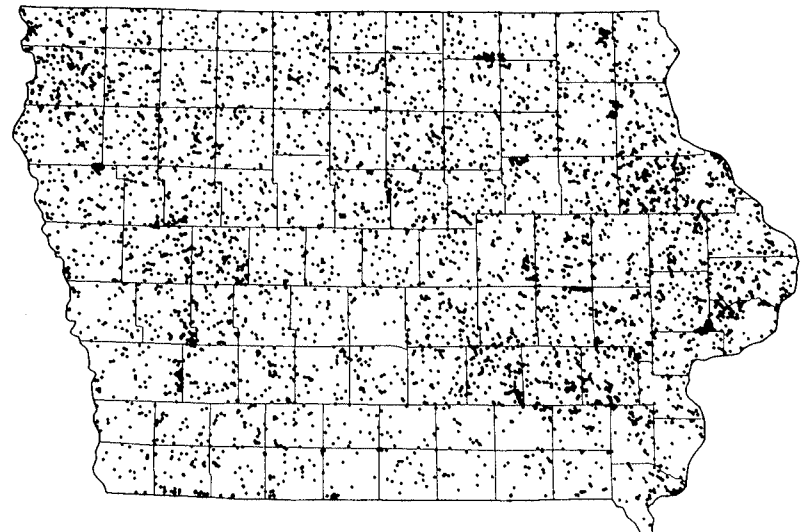


1 DOT = 2,500 ACRES

U.S. Department of Commerce
Bureau of the Census

74 - 91A

HOGS AND PIGS: 1974



1 DOT = 2,500

U.S. Department of Commerce
Bureau of the Census

74 - 111A

