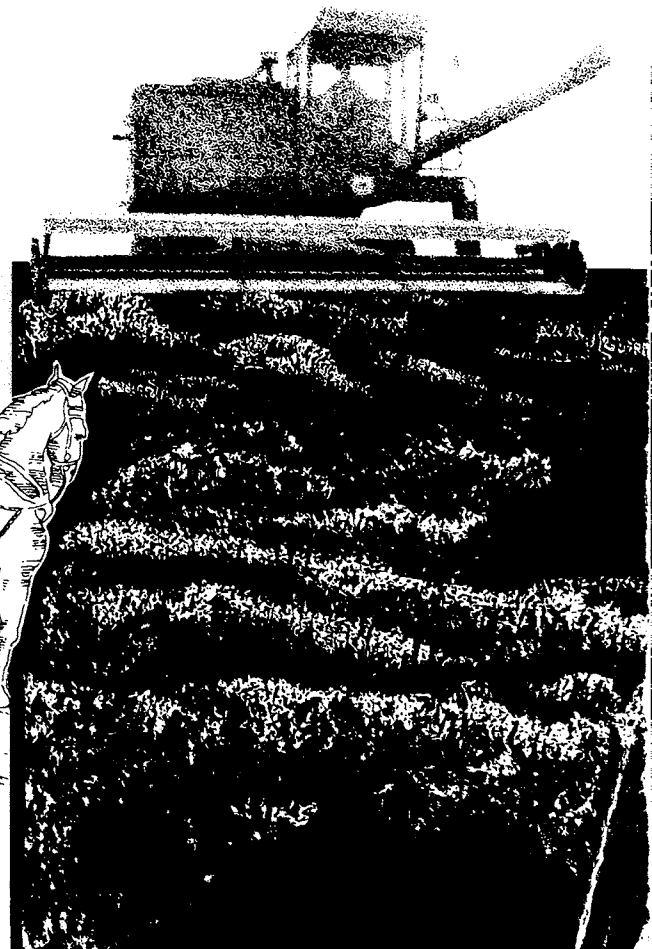
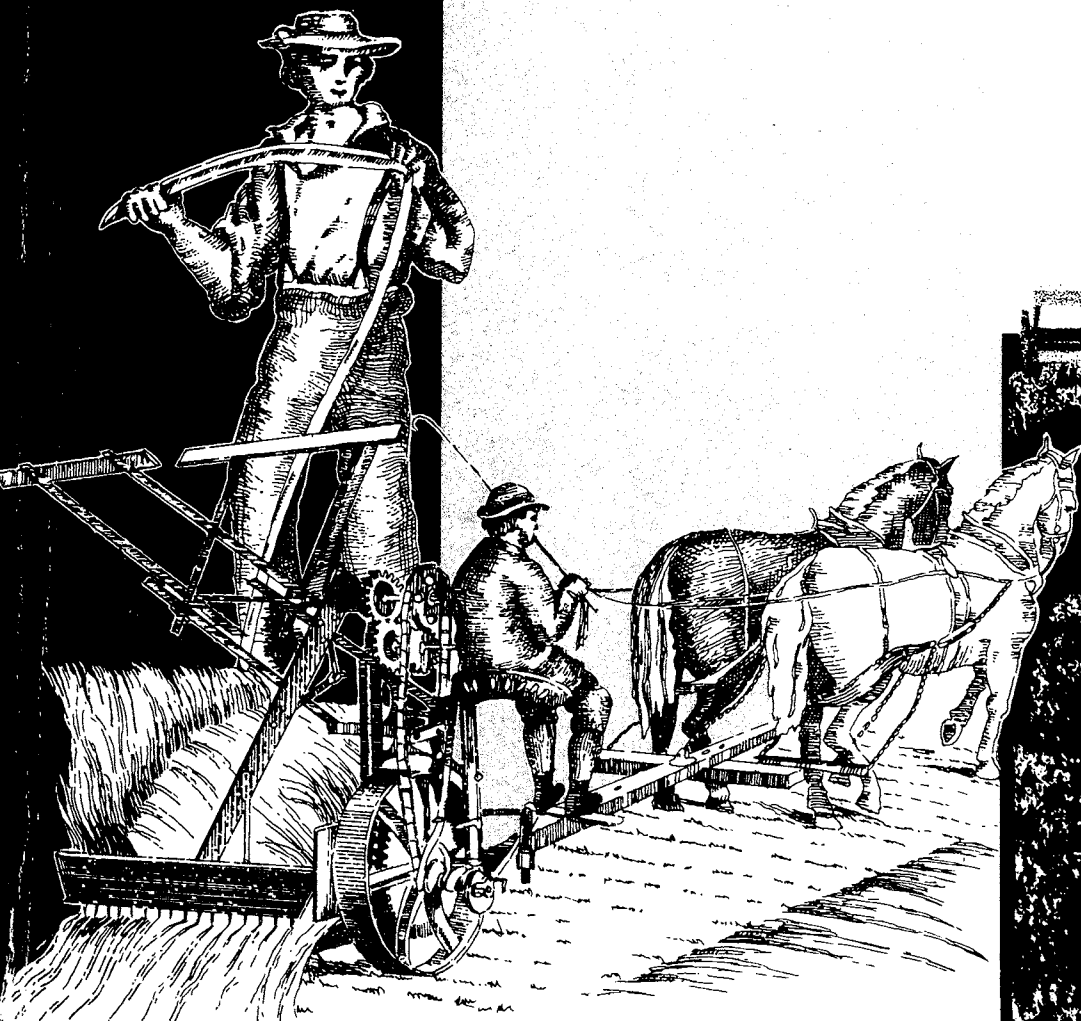


1974 Census of Agriculture

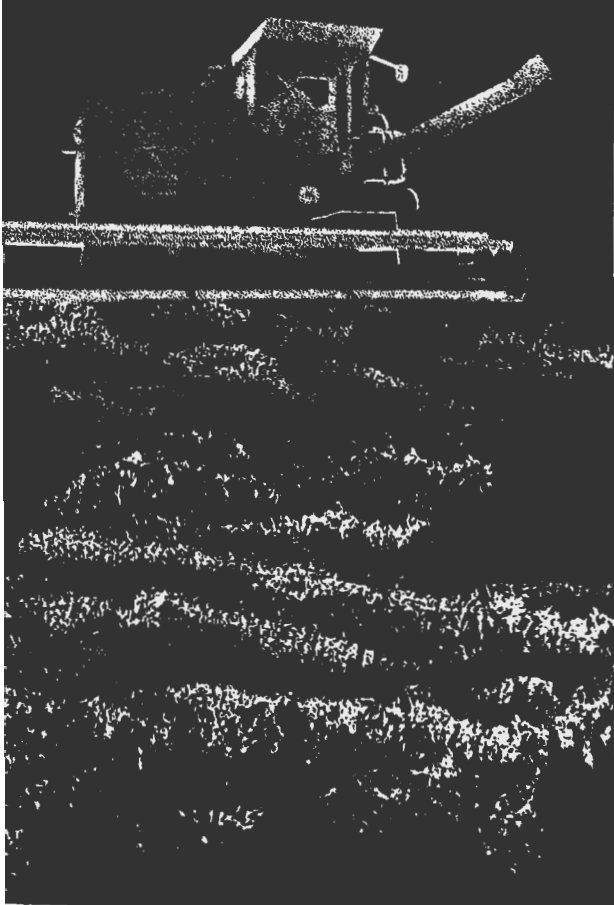
Volume I Part 37
Oregon
State and
County Data

U.S. Department of Commerce
BUREAU OF THE CENSUS



1974
Census
of
Agriculture

Volume I Part 37
Oregon
State and
County Data



Issued May 1977



U.S. Department of Commerce
Juanita M. Kreps, Secretary

BUREAU OF THE CENSUS
Manuel D. Plotkin, Director

BUREAU OF THE CENSUS

Manuel D. Plotkin, Director
Robert L. Hagan, Deputy Director
Shirley Kallek, Associate Director for Economic Fields

AGRICULTURE DIVISION
Orvin L. Wilhite, Chief

ACKNOWLEDGMENTS—Many persons participated in the various activities of the 1974 Census of Agriculture. Primary direction was by **Shirley Kallek**, Associate Director for Economic Fields. Her predecessor, **James W. Turbitt**, now Associate Director for Administration and Field Operations, directed the early stages of planning for the census.

This report was prepared in the Agriculture Division under the general supervision of **J. Thomas Breen**, Chief (to February 1976), and **Orvin L. Wilhite**, his successor. **Arnold L. Bollenbacher**, assisted by **Thomas D. Monroe**, **Donald R. Jahnke**, **John A. Blackledge**, **William A. Harlan**, and **John C. Womack**, was directly responsible for review and analysis of the data and for clerical and computer edit and tabulation specifications. **Kenneth R. Norell**, assisted by **Albert W. Graybill**, coordinated the organization and content of the publication tables. **Robert S. Taylor**, assisted by **John E. Adkins**, **Stephen M. Schobel**, **Loyd C. Brown**, **Jack H. Margolis**, **Edward J. James**, and **William R. Adams**, was directly responsible for the operational aspects of data collection, processing, and tabulation, including preparation of control systems, clerical procedures, and computer programs. **Janet W. Hall** provided editorial services and coded the Linotron table formats of this report for publication via the Linotron computer system. **J. Jack Ingram** (to September 1974) and **Charles E. Rogers**, his successor, assisted by **Darrell D. Prochaska** and **Harold V. Edwards**, were directly responsible for mailing list acquisition and unduplication, design of sampling procedures for data collection, monitoring of processing, and evaluation of coverage. **J. Thomas Miller**, Consultant, assisted in the design and content of the data collection forms and followup letters, specifications for publication tables, and preparation of text. **O. Bryant Benton**, Chief, Data Preparation Division, Jeffersonville, Indiana (to March 1976), and **Don L. Adams**, his successor, assisted by **Robert L. Allen**, **Rebecca Nesbit**, and **Darrell L. Farabee**, were directly responsible for clerical and data-encoding operations.

The computer processing facilities used were under the general supervision of **James R. Pepal**, Chief, Computer Services Division (to May 1976), and **Thomas C. DiNenna**, his successor.

Forms design was accomplished under the general supervision of **Cecil B. Matthews**, Chief, Administrative Services Division (to September 1975), and **Henry J. Husmann**, his successor, assisted by **Gladys S. Potts** and **Cathern S. Kline**.

Maps were prepared by the Geography Division under the general supervision of **Jacob Silver**,

Chief, assisted by **Frederick R. Broome** and **Henry Tom**.

Within the Publications Services Division, many individuals made significant contributions in the areas of publication planning and design, editorial review, composition, and printing procurement.

Important contributions were made by the members of the Census Advisory Committee on Agriculture Statistics in establishing data needs and priorities for collection and publication of the information. Other representatives of both public and private organizations also made significant recommendations and suggestions.

Members of various agencies of the U.S. Department of Agriculture provided advice and counsel during the planning, data collecting, and processing phases of the census and assisted farmers and ranchers who requested help in completing the report form.

The press, farm magazines, and radio and television stations, were most helpful in publicizing the census and encouraging cooperation of farm and ranch operators. **Dean L. Quirin**, Agriculture Division, and **Dorothy W. Whitson**, Public Information Office, were primarily responsible for developing and coordinating the public relations program.

Special tribute is paid to the millions of farm and ranch operators and other agriculture-associated people who furnished the information requested in the census. Only through their cooperation was it possible to collect and publish the data in this report.

Library of Congress Cataloging in Publication Data

United States. Bureau of the Census.
1974 census of agriculture.

CONTENTS: v. 1. State reports. v.—v.2. Statistics by subject. v.—v. 3. Agricultural services. v.—v. 4. Special reports. v.

1. Agriculture—Economic aspects—United States—Statistics—Collected works. I. Title. II. Title: Census of agriculture.

HD1753 1974.B87 1977 338.1'0973

76-608387

For sale by Superintendent of Documents, U.S. Government Printing Office, Washington, D.C. 20402, or any U.S. Department of Commerce district office. Postage stamps not acceptable; currency submitted at sender's risk. Remittances from foreign countries must be by international money order or by draft on a U.S. bank. S/N 003-024-01350-9

REPORTS OF 1974 CENSUS OF AGRICULTURE

Preliminary Reports. Four pages of data published separately for each county having 10 farms or more, and for each State, the four geographic regions, and the United States. *The statistics printed in these reports are superseded by those in the final reports, Volumes I through IV.*

Volume I. State and County Data. One for each State, Puerto Rico, Guam, and the Virgin Islands, covering the area and its subdivisions. The reports for the States contain data for all farms and farms with sales of \$2,500 and over. *Chapter I* contains detailed data at the State level classified by size of farm, tenure and age of farm operator, type of organization, value of products sold, and major type of farm; *Chapter II*, county data summarized by subject; *Chapter III*, county data by subject for miscellaneous crop and livestock items found in relatively few counties; *Chapter IV*, county data by county.

Volume II. Statistics by Subject. Chapters containing total data for the United States, geographic regions and divisions, and States, for all farms and farms with sales of \$2,500 and over.

Volume III. Agricultural Services. Data by county for each State covering establishments whose primary activities are providing agricultural services. Data at the U.S., State, and county levels for all establishments are presented for selected four-digit standard industrial classification codes by size and type of organization. Data shown include dollar volume of business, gross receipts from products provided, gross receipts, labor and payroll by type of service performed, capital expenditures, and expenditures for electricity, gasoline, petroleum, and other fuels.

Volume IV. Special Reports.

Part 1. Graphic Summary. Profiles the Nation's agricultural system in a series of U.S. maps, a number of which are printed in color. The characteristics of America's farms in 1974 are illustrated for crops, livestock, and many other characteristics.

Part 2. Ranking Counties and States. Reports on the top ranking 100 counties and 10 States in descending order of importance for 88 selected items for 1974 with comparative data for 1969.

Part 3. Coverage Evaluation. Shows the completeness of the agriculture census for States, geographic divisions, and the United States. Data also show the characteristics of farms missed by value of sales and by selected standard industrial (type-of-farm) classifications. Sampling reliability of the estimate of coverage is shown by value of sales classifications.

Part 4. Procedural History. A comprehensive summary of the procedures used in conducting the 1974 Census of Agriculture in the 50 States, Puerto Rico, Guam, and the Virgin Islands. The history explains the procedures used from early planning and testing through tabulation and publication of the final reports.

CONTENTS

	Page
Introduction	IX
Table—Farms and Value of Products Sold by 1974 and 1959 Definitions, With Comparable Data for Agricultural Operations Excluded by 1974 Definition: 1974 and 1969	XII
Highlights of the State's Agriculture: 1974 and 1969	XIII
Chart 1—Changes in the State's Agriculture: 1974 from 1969	XIV
Chart 2—Profile of the State's Agriculture: 1974	XVI
Map—Number of Farms: 1974	XVIII
Map—Land in Farms: 1974	XVIII
Map—Value of Crops Sold: 1974	XVIII
Map—Value of Livestock, Poultry, and Their Products Sold: 1974	XVIII
Map—Cattle and Calves: 1974	XIX
Map—Value of Dairy Products Sold: 1974	XIX
Map—Wheat Harvested: 1974	XIX
Map—Vegetables, Sweet Corn, and Melons Harvested for Sale: 1974	XIX
State Map	XX

CHAPTER I. State Data

All Farms

TABLE 1. Farms, Land in Farms, and Land Use: 1940 to 1974	I-1
2. Farms, Land in Farms, and Land Use, by Size of Farm: 1974, 1969, and 1964	I-1
3. Farm Operators—Tenure and Characteristics: 1974, 1969, and 1964	I-2
4. Farm Income and Sales: 1974, 1969, and 1964	I-2
5. Farm Production Expenses: 1974, 1969, and 1964	I-3
6. Selected Machinery and Equipment on Place: 1974, 1969, and 1964	I-4
7. Livestock and Poultry—Inventory and Sales: 1974, 1969, and 1964	I-4
8. Crops Harvested and Value of Production: 1974, 1969, and 1964	I-5
9. Summary by Occupation and Age: 1974	I-5

Farms With Sales of \$2,500 and Over

TABLE 10. Farms, Land in Farms, and Land Use: 1974, 1969, and 1964	I-11
11. Farms, Land in Farms, and Land Use, by Size of Farm: 1974, 1969, and 1964	I-11
12. Irrigation, Artificial Drainage, and Artificial Ponds: 1974 and 1969	I-12
13. Agricultural Chemicals Used: 1974 and 1969	I-12

CONTENTS Continued

Farms With Sales of \$2,500 and Over Continued

Page

TABLE 14. Farm Operators—Tenure and Characteristics: 1974, 1969, and 1964	I-13
15. Value of Agricultural Products Sold: 1974 and 1969	I-13
16. Income From Sources Other Than Sale of Agricultural Products: 1974 and 1969	I-14
17. Farm Production Expenses: 1974, 1969, and 1964	I-14
18. Farm Payroll and Employment: 1974, 1969, and 1964	I-16
19. Machinery and Equipment on Place: 1974, 1969, and 1964	I-16
20. Poultry—Inventory and Sales: 1974 and 1969	I-17
21. Cattle and Calves—Inventory and Sales: 1974 and 1969	I-18
22. Hogs and Pigs—Inventory and Sales: 1974 and 1969	I-20
23. Sheep and Lambs—Inventory and Sales: 1974 and 1969	I-21
24. Other Livestock and Livestock Products—Inventory and Sales: 1974 and 1969	I-21
25. Selected Crops Harvested: 1974, 1969, and 1964	I-22
26. Value of Agricultural Products Sold by Commodity Group and Total Value of Sales: 1974	I-25
27. Contracts: 1974	I-26
28. Summary by Tenure of Farm Operator and Type of Organization: 1974	I-28
29. Summary by Age and Principal Occupation of Farm Operator: 1974	I-36
30. Summary by Size of Farm: 1974	I-52
31. Summary by Value of Agricultural Products Sold: 1974	I-68
32. Summary by Standard Industrial Classification of Farms: 1974	I-76
33. Summary by Standard Industrial Classification of Farms by Value of Sales: 1974	I-92
Cash grain farms	I-92
Cotton farms	(Not shown)
Tobacco farms	(Not shown)
Sugar crop, Irish potato, hay, peanut, and other field crop farms	I-100
Vegetable and melon farms	I-108
Fruit and tree nut farms	I-116
Horticultural specialty farms	(Not shown)
General farms, primarily crop	(Not shown)
Livestock farms, except dairy, poultry, and animal specialty	I-124
Dairy farms	I-132
Poultry and egg farms	(Not shown)
Animal specialty farms	(Not shown)
General farms, primarily livestock	(Not shown)
Farms not classified by SIC	(Not shown)

CHAPTER II. County Summary Data

TABLE 1. Number, Land, and Value of Farms: 1974 and 1969	II-1
2. Land Use: 1974	II-2
3. Irrigation: 1974	II-3
4. Tenure of Farm Operators and Type of Organization of Farms: 1974	II-3
5. Characteristics of All Farm Operators: 1974	II-4

CONTENTS Continued**CHAPTER II Continued**

Page

TABLE 6. Farms by Standard Industrial Classification for Farms With Sales of \$2,500 and Over: 1974	11-4
7. Farms by Value of Agricultural Products Sold: 1974	11-5
8. Market Value of Agricultural Products Sold: 1974	11-6
9. Farm Production Expenses: 1974	11-7
10. Farm Production Expenses by Item Purchased: 1974	11-7
11. Machinery and Equipment: 1974	11-9
12. Cattle and Calves—Inventory and Sales: 1974	11-10
13. Hogs and Pigs—Inventory and Sales: 1974	11-12
14. Sheep and Lambs—Inventory and Sales: 1974	11-13
15. Poultry—Inventory and Sales: 1974	11-14
16. Horses and Ponies—Inventory and Sales: 1974	11-16
17. Field Corn for All Purposes: 1974	11-17
18. Field Corn for Grain: 1974	11-17
19. Sorghums for All Purposes, Except Sirup: 1974	11-18
20. Sorghums for Grain: 1974	11-18
21. Wheat for Grain: 1974	11-19
22. Soybeans: 1974	11-19
23. Hay, Excluding Sorghum Hay: 1974	11-20
24. Peanuts for Nuts: 1974	11-20
25. Cotton: 1974	11-21
26. Tobacco: 1974	11-21
27. Irish Potatoes: 1974	11-22
28. Vegetables, Sweet Corn, or Melons: 1974	11-22
29. Berries: 1974	11-23
30. Land in Orchards: 1974	11-23
31. Farm Operator Debt for Farms With Sales of \$2,500 and Over: 1974	11-24
32. Grain Storage Capacity for Farms With Sales of \$2,500 and Over: 1974	11-24
33. Characteristics of Farms and Specified Excluded Agricultural Operations: 1974	11-25

CHAPTER III. County Miscellaneous Data

TABLE 1. Miscellaneous Poultry: 1974	111-1
2. Miscellaneous Livestock and Animal Specialties: 1974	111-1
3. Mink: 1974	111-2
4. Colonies of Bees: 1974	111-2
5. Angora Goats: 1974	111-3
6. Milk Goats: 1974	111-3
7. Fish: 1974	111-3
8. Hay, Field Seeds, Other Specified Field Crops, and Berries: 1974	111-3
9. Grains, Dry Beans and Peas, Sweetpotatoes, and Sugar Crops: 1974	111-7
10. Vegetables Harvested for Sale: 1974	111-8
11. Fruits and Nuts: 1974	111-10
12. Forest Products—Sales: 1974	111-13
13. Nursery and Greenhouse Products: 1974	111-13
14. Farm Operators by Selected Racial and Ethnic Group: 1974	111-14

CONTENTS Continued

CHAPTER IV. County Data (The following tables are common to each county)

	Page
TABLE 1. Farms, Land in Farms, and Land Use: 1974 and 1969	IV-1
2. Farm Operators—Tenure and Characteristics: 1974 and 1969	IV-1
3. Market Value of Agricultural Products Sold: 1974 and 1969	IV-2
4. Income From Sources Other Than Sale of Agricultural Products: 1974 and 1969	IV-2
5. Farm Production Expenses: 1974 and 1969	IV-2
6. Machinery and Equipment on Place: 1974 and 1969	IV-3
7. Cattle and Calves—Inventory and Sales: 1974 and 1969	IV-3
8. Hogs, Sheep, Goats, and Horses—Inventory and Sales: 1974 and 1969	IV-4
9. Poultry—Inventory and Sales: 1974 and 1969	IV-4
10. Crops: 1974 and 1969	IV-5
11. Irrigation and Commercial Fertilizer on Pastureland and Harvested Crops for Farms With Sales of \$2,500 and Over: 1974 and 1969	IV-5
12. Agricultural Chemicals Used and Cost of Materials for Farms With Sales of \$2,500 and Over: 1974 and 1969	IV-6
13. Irrigation, Artificial Drainage, and Artificial Ponds for Farms With Sales of \$2,500 and Over: 1974 and 1969	IV-6
14. Farm Credit for Farms With Sales of \$2,500 and Over: 1974	IV-6
15. Payroll and Employment for Farms With Sales of \$2,500 and Over: 1974 and 1969	IV-6
Oregon	IV-1
Baker	IV-7
Benton	IV-13
Clackamas	IV-19
Clatsop	IV-25
Columbia	IV-31
Coos	IV-37
Crook	IV-43
Curry	IV-49
Deschutes	IV-55
Douglas	IV-61
Gilliam	IV-67
Grant	IV-73
Harney	IV-79
Hood River	IV-85
Jackson	IV-91
Jefferson	IV-97
Josephine	IV-103
Klamath	IV-109
Lake	IV-115
Lane	IV-121
Lincoln	IV-127
Linn	IV-133
Malheur	IV-139
Marion	IV-145
Morrow	IV-151
Multnomah	IV-157
Polk	IV-163
Sherman	IV-169
Tillamook	IV-175
Umatilla	IV-181
Union	IV-187
Wallowa	IV-193
Wasco	IV-199
Washington	IV-205
Wheeler	IV-211
Yamhill	IV-217

APPENDIXES

A. General Explanation	A-1
Taking the Census	A-1
Enumeration Method	A-1
Mailing List	A-1
Report Forms	A-1
Initial Mailing	A-2
Followup Procedures	A-2
Major Changes in Data Collected	A-2
Office Processing	A-3
1969 Data Corrections	A-3
Definitions and Explanations	A-3
Farm Classifications	A-9
Unpublished Data	A-11
Nonsampling Errors	A-11
Census Coverage	A-12
Statistical Adjustments	A-12
Nonresponse	A-12
Sampling	A-12
Reliability of Adjustment for Nonresponse and Sampling	A-12
B. Characteristics of Agricultural Operations Qualifying as Farms by the 1959 Definition but Excluded by the 1974 Definition: 1974 and 1969	B-1
C. Report Forms	
Regular Report Form	C-1
Short Report Form	C-23
INDEX	Index-1

INTRODUCTION

Authority, Area Covered, and History

The 1974 Census of Agriculture was taken in accordance with the provisions of Title 13, United States Code, reaffirmed by section 818 of the Agriculture and Consumer Protection Act of 1973 (Public Law 93-86). Sections 142(a) and 191 of Title 13 provide for a census of agriculture every 5 years in each State, the District of Columbia, Puerto Rico, Guam, and the Virgin Islands.

The 1974 census is the 20th nationwide census of agriculture and the second conducted primarily by mail. The first agricultural census data were collected in 1840 as part of the sixth decennial census. Since that time, a census of agriculture has been a part of each decennial census program, and since 1920 a national census of agriculture has been taken every 5 years.

Farm Definition

For each of the 20 censuses of agriculture except the first, taken in 1840, the agency responsible for conducting the census has established minimum criteria which define a farm for the purpose of the census. As the Nation has developed and grown, agriculture also has changed and grown, and from time to time the minimum criteria for the definition of a farm have been changed.

Prior to 1974, the eighth and most recent change in minimum criteria was for the 1959 Census of Agriculture, when the definition of a farm was based primarily on a combination of acres in the place and value of agricultural products sold.

The word "place" was defined to include all land on which agricultural operations were conducted at any time in the census year under the day-to-day control or supervision of one person or partnership. Control may have been exercised through ownership or management or through a lease, rental, or cropping arrangement.

Places of less than 10 acres in the census year were counted as farms if the estimated sales of agricultural products for the year amounted to at least \$250. Places of 10 or more acres in the census year were counted as farms if the estimated sales of agricultural products for the year amounted to at least \$50. Places having less than the \$50 or \$250 minimum estimated sales in the census year were also counted as farms if they could normally be expected to produce agricultural products in sufficient quantity to meet the requirements of the definition.

Using the 1959 definition, the 1969 census reported about 571,000 farms in the United States having sales of less than \$1,000; these farms comprised 20.9 percent of all farms but contributed less than 1 percent of total sales. In 1974 there were only about 152,000 such farms, accounting for less than 6 hundredths of 1 percent of total sales. Between censuses many of these small farms had ceased operations, while many others had sales of \$1,000 or more in the census year, either because of increased agricultural activity or because of increases in the per unit value of agricultural products sold.

In view of increases in price levels and other changes in the structure of agricultural operations, various individuals

and organizations, including members of the Census Advisory Committee on Agriculture Statistics, the Office of Management and Budget, and the U.S. Department of Agriculture, agreed that a change in the definition of a farm was justified. The Department of Commerce announced on August 12, 1975, that the census definition of a farm, for purposes of publishing the 1974 census data, was any establishment which during the census year had or normally would have had sales of agricultural products of \$1,000 or more.

In the next 10 months, Congress held four hearings on the appropriateness of changing the definition. During this time, Public Law 94-229, enacted March 15, 1976, included a provision requiring the statistical classification of farms in effect on January 1, 1975, to be continued in effect through June 30, 1976, and that any statistical report issued on or before June 30, 1976, should reflect such classification, but could also include additional classifications as deemed appropriate by the Secretary of Commerce.

Definition for preliminary reports. Publication of the preliminary county reports began in April 1976, and these reports for all counties and States, the four regions, and the United States were tabulated and published in accordance with the same farm definition used for the 1959, 1964, and 1969 censuses.

Definition for final reports. For all final reports, the 1974 statistics are in accordance with the 1974 definition, which differs from the earlier definition in only two respects:

INTRODUCTION Continued

1. The criterion for number of "acres in place" has been deleted.
2. The criterion for minimum value of agricultural products sold has been changed to \$1,000.

Thus for 1974, a farm was defined to include all land on which agricultural operations were conducted at any time in the census year under the day-to-day control of an individual management, and from which \$1,000 or more of agricultural products were sold during the census year. Control may have been exercised through ownership or management, or through a lease, rental, or cropping arrangement. Places having less than the minimum \$1,000 sales in the census year were also counted as farms if they could normally be expected to produce agricultural products in sufficient quantity to meet the requirements of the definition.

Three tables in this report provide users with measures of the effect of the change in definition: The table following this introduction shows farms and sales, by county, for 1974 and 1969, for both the old and the new definitions, and also for those places excluded by the 1974 but not by the 1959 definition. In chapter II, table 33 presents data by county for 1974 showing comparisons between farms (1974 definition) and agricultural operations that would have been farms under the 1959 definition. The table that comprises appendix B presents data by State for 1974 and 1969 showing characteristics of 1974 agricultural operations excluded by the new definition and of 1969 farms having less than \$1,000 total value of sales.

The 1974 "all farms" data shown in State tables 1 through 9 and county tables 1 through 10 are for those agricultural operations with at least \$1,000 in total (or potential) sales of farm products. All other tables in this report are limited to farms with sales of \$2,500 or more (see the paragraphs in appendix A that describe the report forms and the enumeration method).

Comparability of Data

In general, data for 1974 and earlier

censuses are comparable with data from earlier censuses only for farms with \$2,500 or more total value of sales, because the data for farms with \$2,500 or more value of sales are not affected by the change in farm definition. Data for all farms for 1974 are based on the new definition so they are not directly comparable to earlier censuses. It is also important to note that in addition to the difference in farm definition used in this report from that in the preliminary version, this final report contains 1974 figures which will not agree with figures in the preliminary reports because of corrections, additions, and deletions.

Even for farms with \$2,500 or more value of sales, the difference in timing and the change from personal interview to mail enumeration affect the comparability between the data for 1974 and 1969 and that for earlier censuses. Both 1974 and 1969 censuses were taken by mail; all earlier censuses were taken by direct interview.

Dramatic changes in rates of farm expenditure and unit prices of products sold between the 1969 and 1974 censuses affect the comparability of some census data. During the period between the two censuses, prices paid by farmers greatly increased. Prices received by farmers also increased but with wide fluctuations among commodities at different times during the census year of 1974.

Crop and livestock production data are for the calendar year 1974, except for a few crops (such as citrus) for which the production year overlaps the calendar year. Expenditures, crops irrigated, usage of agricultural chemicals and fertilizers, and sale of farm products were all asked for the calendar year. Respondents were instructed to report inventory numbers of livestock, poultry, and other specified items as of December 31, 1974. The reporting period and inventory data are the same as for the 1969 census.

Censuses prior to 1969 were taken by enumerators, each assigned to a specific geographic area. Field work for the 1964 and 1959 censuses was completed largely in October, November, and December of the reference year. Livestock and poultry inventories for those two censuses were as

of the time of enumeration. Other variations in time of enumeration occurred in censuses prior to 1959.

Graphics

On the following pages, there is a graphic presentation of selected agricultural statistics for this State. The first four dot maps are being published for all States. The second four dot maps have been selected to present data of particular importance to this State.

Tabular Presentation

State data—In chapter I, State tables 1 through 27 show detailed State level data generally accompanied by historical data for one or more censuses. Tables 28 through 33 provide 1974 State data cross-tabulated by various farm classifications.

County summary data—A summary of selected data items for each county of the State is presented in chapter II of this publication. In these tables the counties are listed in alphabetical order with the State total at the beginning of each table.

County miscellaneous data—In chapter III, data for additional crop and livestock items not common to a large number of counties are reported in a separate set of tables by county for each State. Some of these items, even though reported in only a few counties of the State, are sufficiently important to account for a significant proportion of the agricultural production.

Counties not having the subject item of a given table, or with only a very limited number of farms reporting the item, are not listed separately; their data are combined with other counties and presented as "All other."

Final county data—Six pages of data are presented in chapter IV for each county with 10 farms or more in 1974. The tables include final data for each county and are more comprehensive than those in the preliminary reports. Data are for the year 1974 with inventory (on place)

INTRODUCTION Continued

figures as of December 31, 1974. Information covering all farms and farms with sales of \$2,500 and over are presented for both the 1974 and 1969 censuses. A State level six-page report like the county report is published at the beginning of the chapter.

Preliminary county data—Preliminary reports have been published separately for all counties in the United States with 10 farms or more in 1974. This four-page series provided, at the earliest possible date, usable information on a limited number of major data items, with comparative final figures from the 1969 census.

The reports were issued on a flow basis, with a State report following the release of the last county report for each State. Tables showing regional and U.S. totals were also prepared as a part of this series.

For all States, the same table format was used to present the data except data for six selected crops shown in table 7. These crops were varied by State depending upon their relative importance.

For major items at the county level differences between the preliminary and final figures are in general less than 5 percent. At the State level, differences are significantly less.

"See Text" Reference

The remark "See text" in the tables refers to explanations, definitions, and classifications in sections 5 and 6 of appendix A.

Abbreviations and Symbols

The following abbreviations and symbols are used throughout the tables:

- Represents zero.
- D Data withheld to avoid disclosing information for individual farms.
- X Not applicable.
- Z Less than half of the unit reported.
- NA Not available.

INTRODUCTION Continued

FARMS AND VALUE OF PRODUCTS SOLD BY 1974 AND 1959 DEFINITIONS, WITH COMPARABLE DATA FOR AGRICULTURAL OPERATIONS EXCLUDED BY 1974 DEFINITION: 1974 AND 1969

COUNTY	BY 1974 DEFINITION				BY 1959 DEFINITION				AGRICULTURAL OPERATIONS EXCLUDED BY 1974 DEFINITION BUT NOT BY 1959 DEFINITION			
	NUMBER		VALUE OF AGRICULTURAL PRODUCTS SOLD (\$1,000)		NUMBER		VALUE OF AGRICULTURAL PRODUCTS SOLD (\$1,000)		NUMBER		VALUE OF AGRICULTURAL PRODUCTS SOLD (\$1,000)	
	1974	1969	1974	1969	1974	1969	1974	1969	1974	1969	1974	1969
OREGON, TOTAL	26 753	21 778	1 025 082	528 338	30 166	29 063	1 026 205	531 209	3 413	7 285	1 123	2 871
BAKER	551	537	17 611	11 889	596	626	17 629	11 927	45	89	18	38
BENTON	527	399	19 197	8 374	608	575	19 215	8 453	81	176	18	79
CLACKAMAS	2 440	1 802	48 394	32 460	2 878	2 801	48 544	32 866	438	999	150	406
CLATSOP	217	160	2 540	2 100	254	258	2 554	2 136	37	98	14	36
COLUMBIA	503	369	6 056	4 379	603	547	6 092	4 449	100	178	36	70
COOS	650	552	9 913	7 513	754	700	9 947	7 579	104	148	34	66
CROOK	290	258	13 805	9 103	314	293	13 816	9 119	24	35	11	16
CURRY	164	141	4 014	2 531	190	194	4 019	2 553	26	53	6	22
DESCHUTES	438	354	8 276	6 481	502	503	8 288	6 546	64	149	11	65
DOUGLAS	1 241	852	13 312	8 066	1 423	1 203	13 364	8 213	182	351	51	147
GILLIAM	169	163	19 044	6 384	175	166	19 047	6 385	6	3	2	1
GRANT	272	250	7 441	6 572	291	286	7 443	6 585	19	36	2	13
HARNEY	286	254	11 331	8 227	291	276	11 333	8 235	5	22	2	8
HOOD RIVER	480	451	20 418	12 820	509	538	20 431	12 851	29	87	14	31
JACKSON	1 032	710	26 032	17 681	1 232	1 035	26 108	17 827	200	325	76	147
JEFFERSON	341	326	34 228	19 306	351	356	34 231	19 318	10	30	3	11
JOSEPHINE	394	262	6 509	4 078	513	395	6 554	4 130	119	133	45	52
KLAMATH	783	702	46 612	27 328	852	826	46 636	27 372	69	124	25	44
LAKE	282	246	12 862	8 315	301	283	12 866	8 332	19	37	4	16
LANE	1 592	1 172	38 250	21 431	1 845	1 840	38 341	21 653	253	668	91	223
LINCOLN	230	175	1 718	1 698	271	258	1 731	1 733	41	83	13	35
LINN	1 632	1 269	59 600	31 190	1 830	1 742	59 663	31 389	198	473	63	199
MALHEUR	1 317	1 266	101 079	43 069	1 371	1 357	101 097	43 105	54	91	18	36
MARION	2 496	2 096	100 903	47 940	2 821	2 800	101 016	48 224	325	704	114	283
MORROW	328	315	42 344	9 482	341	347	42 347	9 496	13	32	3	14
MULTNOMAH	472	450	16 792	13 106	574	623	16 836	13 181	102	173	43	74
POLK	1 030	744	28 770	14 186	1 179	1 056	28 816	14 321	149	312	45	134
SHERMAN	196	202	18 512	4 716	201	209	18 513	4 720	5	7	2	3
TILLAMOOK	398	403	15 905	8 769	442	469	15 917	8 795	44	66	12	26
UMATILLA	1 212	1 028	128 364	54 235	1 304	1 284	128 392	54 323	92	256	28	88
UNION	642	560	23 472	11 665	713	678	23 490	11 716	71	118	18	51
WALLOWA	423	375	15 034	8 164	466	423	15 045	8 188	43	48	11	24
WASCO	485	469	22 285	11 132	502	542	22 288	11 150	17	73	4	17
WASHINGTON	1 649	1 321	41 598	23 206	1 903	1 976	41 672	23 435	254	655	74	230
WHEELER	98	100	2 872	2 343	101	110	2 874	2 346	3	10	1	3
YAMHILL	1 493	1 045	39 990	18 399	1 665	1 488	40 048	18 561	172	443	59	161

CHART 1. Changes in the State's Agriculture: 1974 From 1969

FARMS WITH SALES OF \$2,500 AND OVER

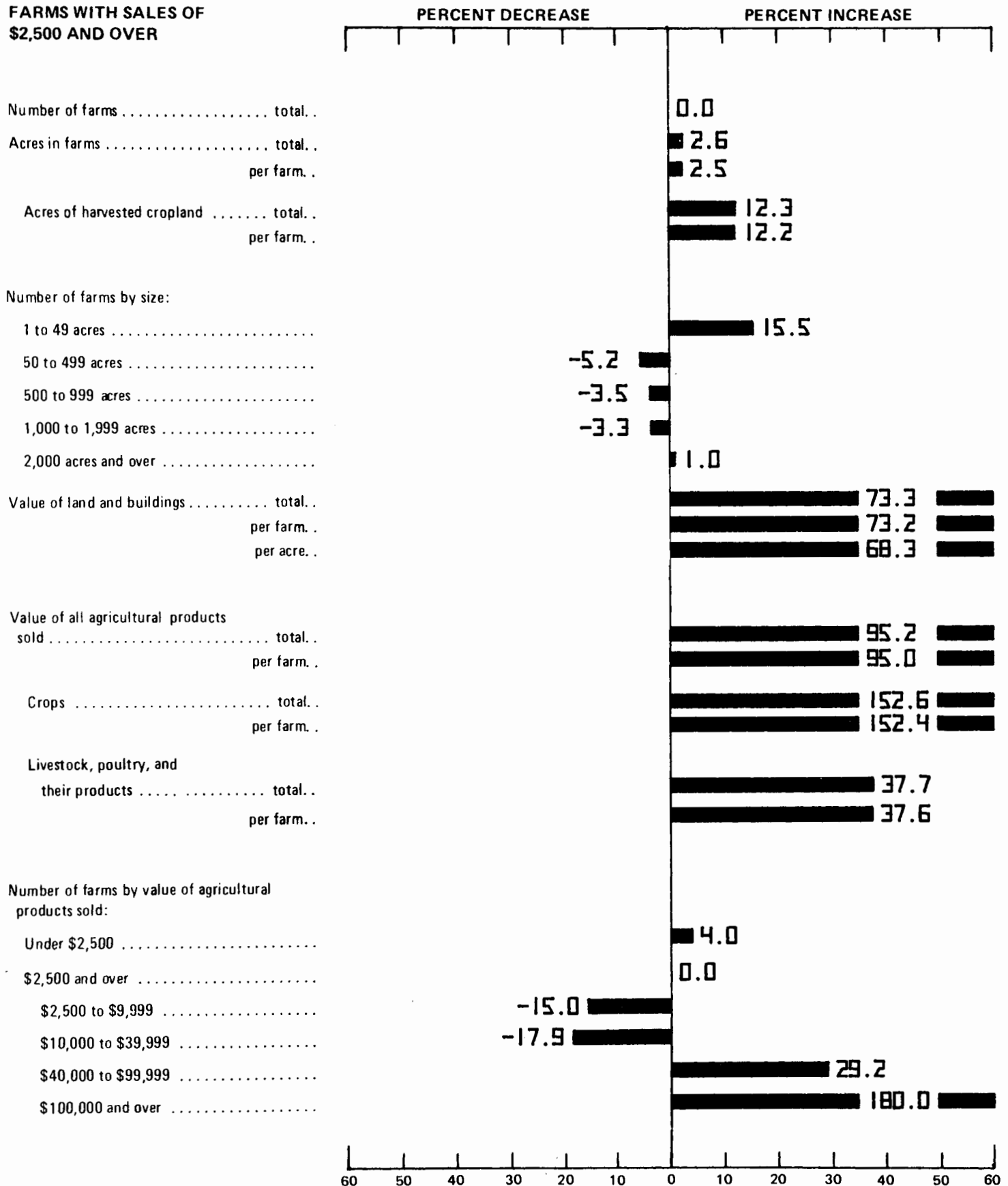


CHART 1. Changes in the State's Agriculture: 1974 From 1969—Continued

FARMS WITH SALES OF \$2,500 AND OVER

Value of agricultural products sold by farms having sales of—

- Under \$2,500
- \$2,500 and over
- \$2,500 to \$9,999
- \$10,000 to \$39,999
- \$40,000 to \$99,999
- \$100,000 and over

Farm production expenses—specified items:

- Commercially mixed formula feeds
- Commercial fertilizer
- Gasoline and other petroleum fuel and oil for the farm business
- Farm labor, contract labor, machine hire and customwork

Value of machinery and equipment on farms

Machinery and equipment on farms—specified items:

- Automobiles. number. .
- Motortrucks, including pickups. . . number. .
- Tractors, excluding garden tractors and motor tillers. number. .

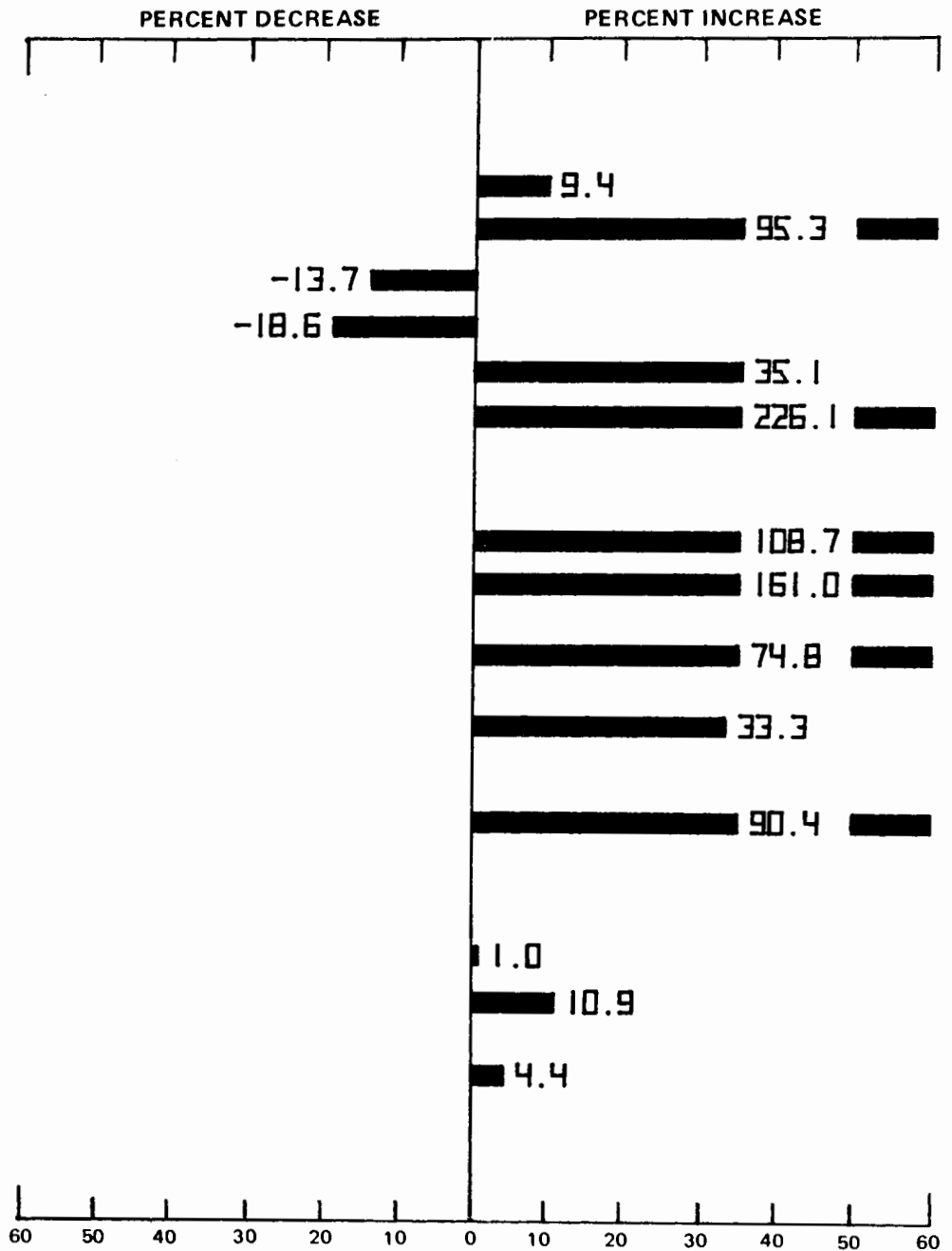
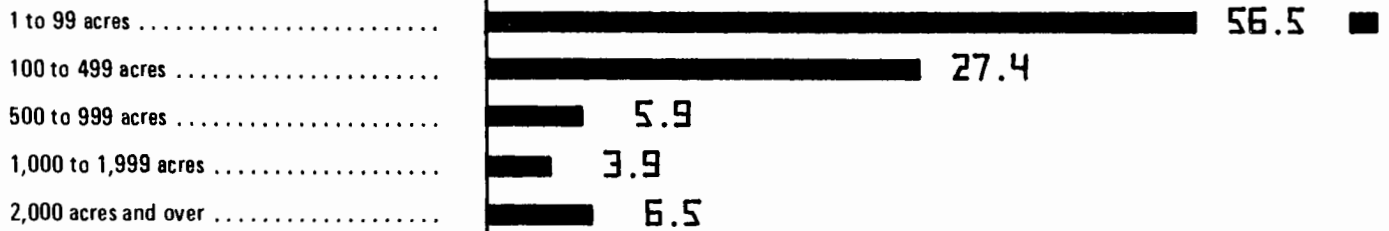


CHART 2. Profile of the State's Agriculture: 1974

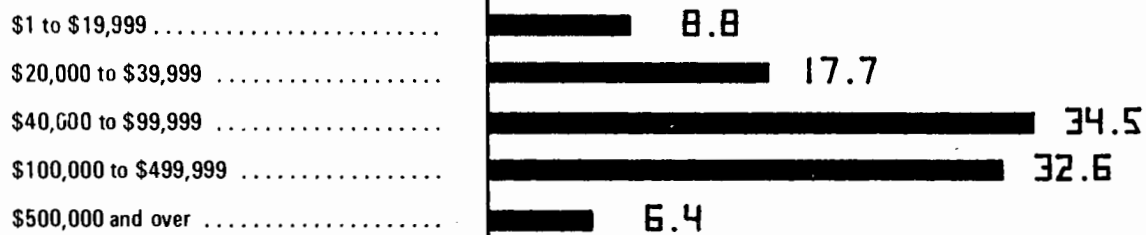
ALL FARMS

PERCENT OF TOTAL FARMS

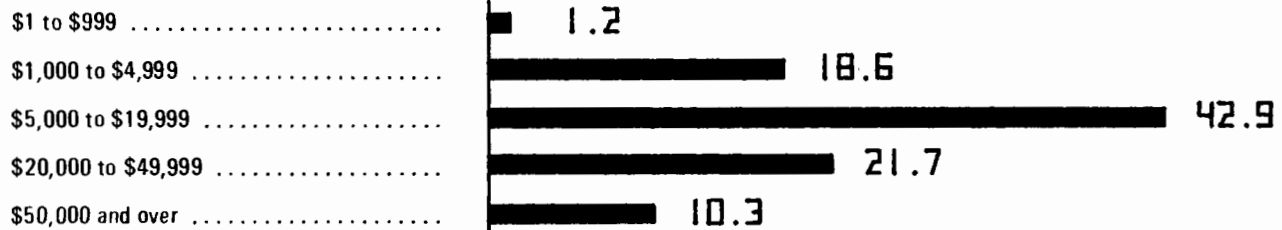
Farms by size:



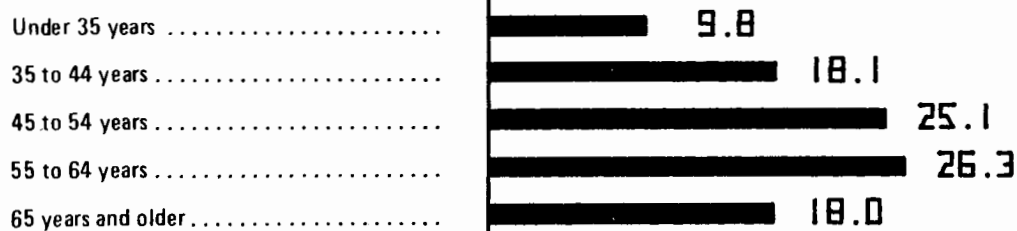
Farms by value of land and buildings:



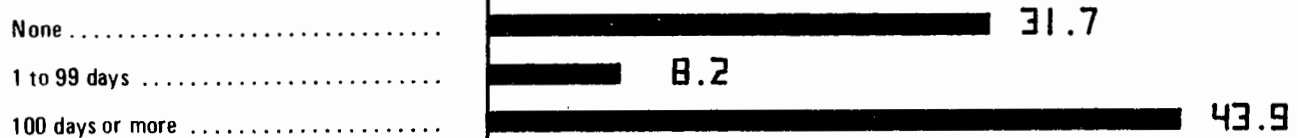
Farms by value of machinery and equipment:



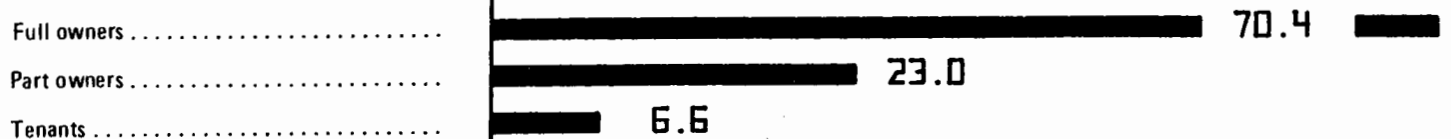
Farm operators by age:¹



Farm operators working off farm:¹

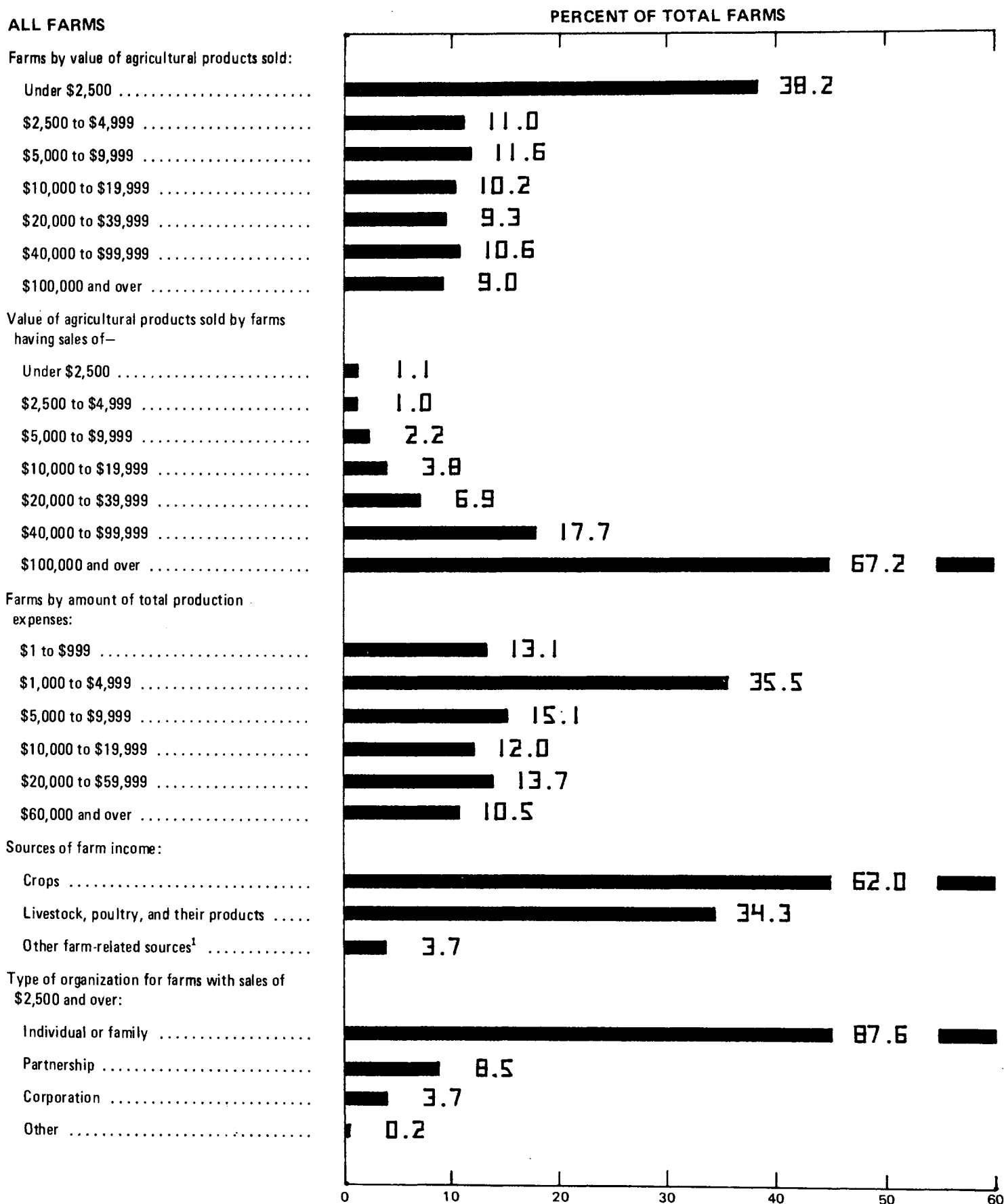


Farm operators by tenure:



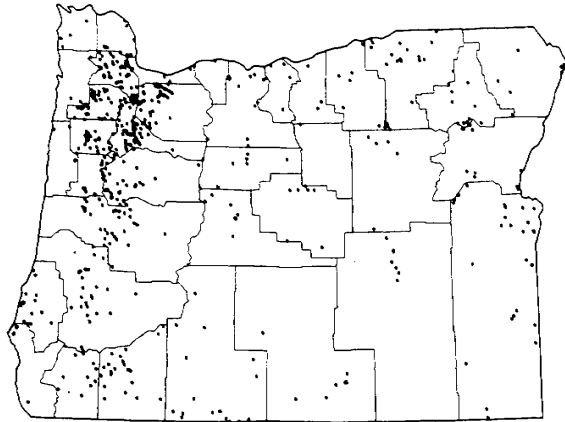
¹ Data apply only to individual or family operations (sole proprietorships) and partnerships.

CHART 2. Profile of the State's Agriculture: 1974—Continued



¹ Includes forest products sold, and income from customwork and other agricultural services, recreational services, participation in government farm programs, rental of farm property, and other miscellaneous sources closely related to the agricultural operation.

NUMBER OF FARMS: 1974

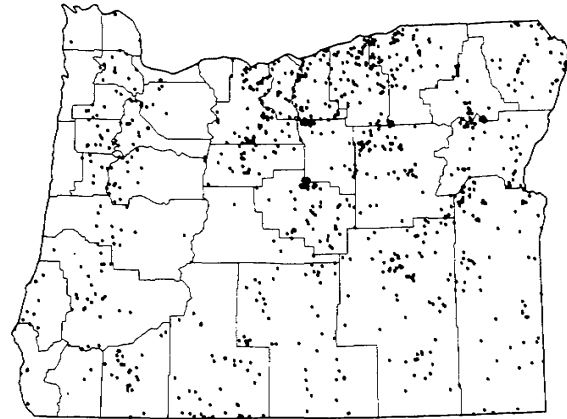


1 DOT = 50

74 - 1OR

U.S. Department of Commerce
Bureau of the Census

LAND IN FARMS: 1974

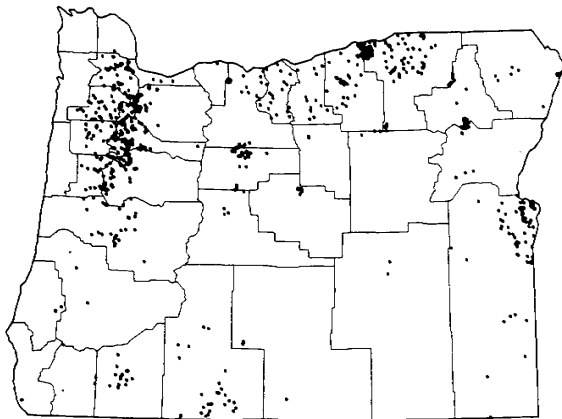


1 DOT = 20,000 ACRES

74 - 2OR

U.S. Department of Commerce
Bureau of the Census

VALUE OF CROPS SOLD: 1974

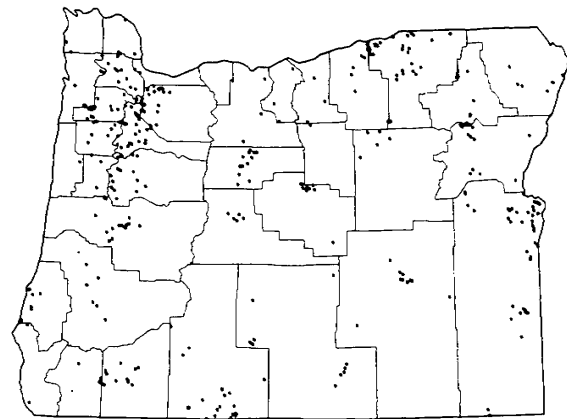


1 DOT = \$1,000,000

74 - 3OR

U.S. Department of Commerce
Bureau of the Census

**VALUE OF LIVESTOCK, POULTRY,
AND THEIR PRODUCTS SOLD: 1974**

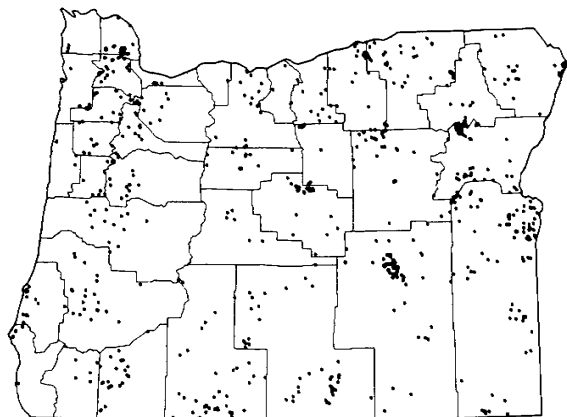


1 DOT = \$1,000,000

74 - 4OR

U.S. Department of Commerce
Bureau of the Census

CATTLE AND CALVES: 1974

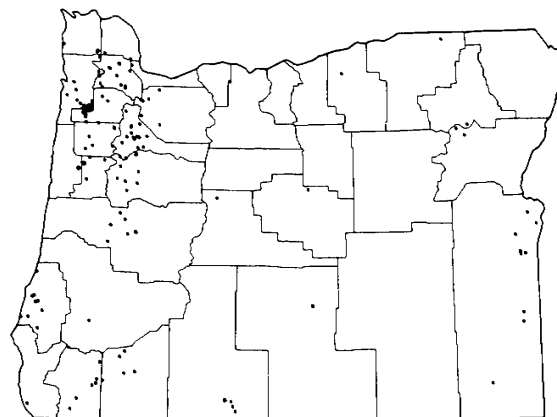


1 DOT = 2,500

74 - 50R

U.S. Department of Commerce
Bureau of the Census

**VALUE OF DAIRY PRODUCTS SOLD: 1974
(FARMS WITH SALES OF \$2,500 AND OVER)**

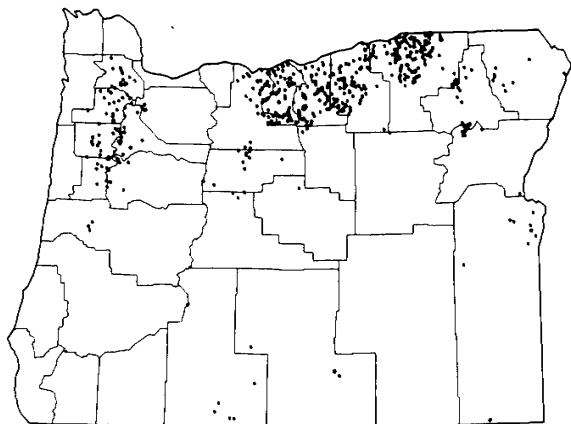


1 DOT = \$500,000

74 - 60R

U.S. Department of Commerce
Bureau of the Census

WHEAT HARVESTED: 1974

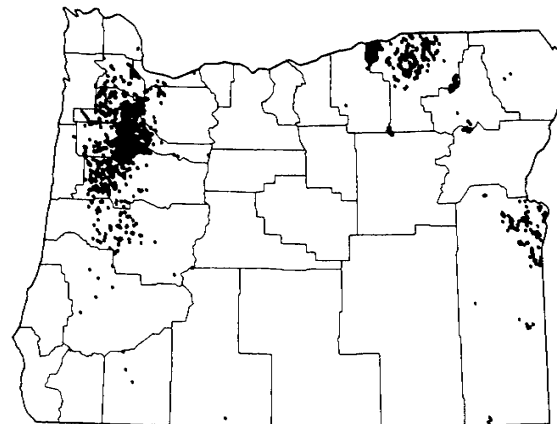


1 DOT = 2,500 ACRES

74 - 100R

U.S. Department of Commerce
Bureau of the Census

**VEGETABLES, SWEET CORN, AND MELONS
HARVESTED FOR SALE: 1974**



1 DOT = 150 ACRES

74 - 120R

U.S. Department of Commerce
Bureau of the Census

OREGON Counties, County Seats, Mountains, and Rivers

